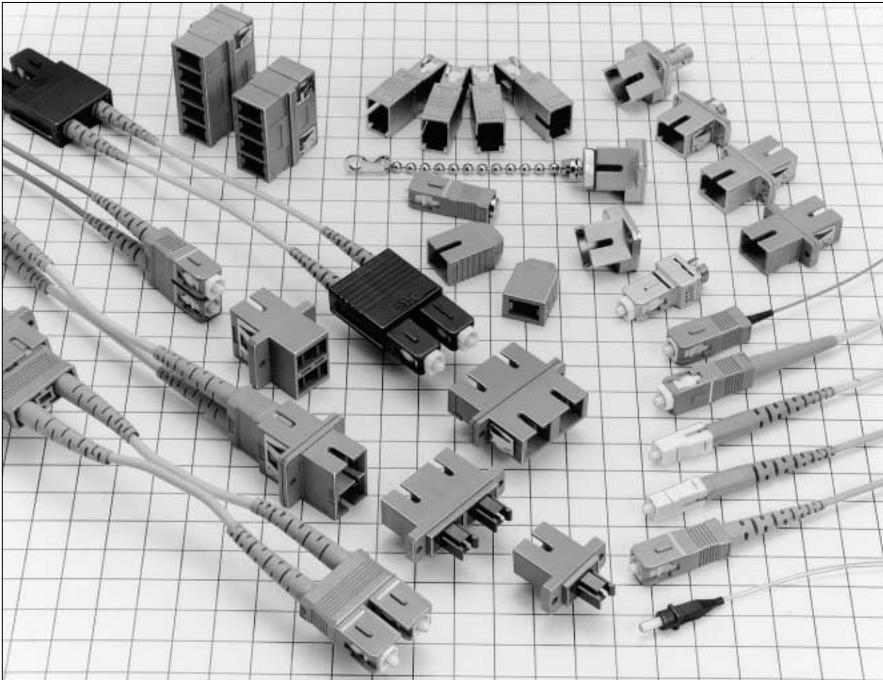


SC Type Fiber Optic Connectors

HSC Series



■ Features

1. JIS, IEC standards compliant and fully intermateable with NTT's SC products.

JIS C 5973 (F04 type fiber optic connectors)
IEC 61754-4

2. Plugs with strain relief boot

Long strain relief boot assures that there are no performance losses when a pull force is applied in a vertical bend direction.

The color of the boot identify the type of polishing:

Blue: PC polishing

Green: Angled PC polishing (APC)

Light purple: Advanced PC (AdPC) polishing

Other colors are also possible.

3. Zirconia Split Sleeve Adapter

Reduces the possibility of powdering caused by the repeated insertion and withdrawal of ferrule.

4. Duplex SC Type: Rigid Type

Available in following types;

H type – 8.5 mm spacing between the fibers, for high density applications.

F type – 12.7 mm spacing between the fibers, low profile, for LAN applications.

Refer to page 39 for further information.

5. Duplex SC Type: Adjustable Type – Comply With ANSI Standards

Floating mechanism with Duplex SC plug.

It is also fully compatible with the HSCF fixed type.

6. Simplified Plugs and Receptacles.

Small size (23.8mm plug length) simplified SC plug is designed for equipments inside connection.

Refer to page 43 for further information.

■ Applications

LAN, public communications lines, CableTV, computer transmission systems, test equipment, and other applications requiring reliable fiber optic connections.

Product Specifications

Ratings		Operating temperature range	-25°C to +70°C	Storage temperature range	-25°C to +70°C	
Item		Test Method (IEC 61300)		Specifications		
Optical Characteristics	Insertion Loss	(SM)	Wavelength 1310nm (LD)	0.5dB max. (PC, AdPC, APC)		
		(GI)	Wavelength 1310nm (LED)	0.3dB max. (PC)		
	Return Loss	(SM)	Wavelength 1310nm (LD)	22dB min. (PC)	40dB min. (AdPC)	
		(GI)		60dB min. (APC)	22dB min. (PC)	
Mechanical Characteristics	Engagement and Separation /force	Measured with corresponding connector.		Simplex plug	Engagement force: 19.6 N max. Separation force: 19.6 N max.	
	Ferrule withdrawal force	Extract zirconia gauge 2.499 ±0.0005 mm dia from split sleeve.		Duplex plug	Engagement force: 39 N max. Separation force: 39 N max.	
	Cable retention (Straight pull)	89N tensile load for one minute.		Copper alloy split sleeve	2N to 5.9N	
	Durability (cycles, mating/un-mating)	1000 times		Zirconia split sleeve	2N to 3.9N	
	Vibration	Frequency: 10 to 55 Hz, single amplitude of 0.75 mm, 2 hours in each of the 3 axis.		1) Insertion loss fluctuation after test: 0.2dB max. 2) No visible damage, dislocation of clamp or cable.		
	Shock	Acceleration of 981 m/s ² , 6 ms duration, sin half-wave waveform, 10 cycles in each of the 3 axis.				
Environmental Characteristics	Humidity (Temperature/ humidity- cycles)	-10°C to 65°C, humidity: 90% to 96% 20 cycles		1) Insertion loss fluctuation after test: 0.2dB max. 2) No visible damage, cracks or part dislocation.		
	Change of temperature	-40°C to +75°C 42 cycles (Complies with Telcordia standard GR-326-CORE)				
	Dry heat	960 hours at 85°C				
	Cold	960 hours at -25°C				
	Salt mist	48 hours in a 5% concentration of salt mist				

Materials

Part	Material
Simplex plug housing	Synthetic resin
Spring	Stainless Steel
Ferrule	Zirconia
Simplex adapter housing	Synthetic resin or Zinc alloy
4-position adapter housing	Synthetic resin
5-position adapter housing	Synthetic resin
Receptacle housing	Zinc alloy
Attenuator housing	Zinc alloy
Split sleeve	Zirconia or copper alloy
Dust cap	Synthetic resin



Function diagram

Simplex type




SC type plug housing

<p>Strain relief type (For Cable Diameter: 2 mm & 3mm)</p> 
<p>HSC-PH2-E1, E2, E5 HSC-PH3-B1, B2, B5</p>
<p>0.9 mm fiber Light weight type</p> 
<p>HSC-PH0.9-E1, E2, E5</p>
<p>Short length type (For Cable Diameter: 2mm)</p> 
<p>HSC-PH2-E1-A</p>
<p>Short length type (For Cable Diameter: 3mm)</p> 
<p>HSC-PH3-A4</p>
<p>Conversion adapter - FC jack to SC Plug</p> 
<p>HSCP-HRFCJ-1, 2 HSCP-HRFCJ-1AS, 2AS</p>


Adapter-Panel Mounting

<p>Plastic Housing Products</p> <p>HSC-A3 HSC-A3-D1 HSC-A3-D2</p> 
<p>Die Cast Housing Products</p> <p>HSC-A2 HSC-A2-D1</p> 


Conversion adapter

<p>FC to SC - Screw Mounting</p> 
<p>HSCJ-HRFCJ-B</p>
<p>FC to SC - Panel Mounting</p> 
<p>HSCJ-HRFCJ-C</p>
<p>ST to SC - Screw Mounting</p> 
<p>HSCJ-HSTJ-B</p>

Receptacle






<p>HSC-R1-B, R2-B</p>

Simplified receptacle




<p>HSC-SR-1, D1 HSC-SR-2, D2</p>

<Tool Insertion/Extraction Connectors>

SC2 type plug housing

<p>Long strain relief (For Cable Diameter: 2 mm & 3mm)</p> 
<p>HSC2-PH2-E1, E2, E5 HSC2-PH3-B1, B2, B5</p>
<p>0.9 mm fiber Type</p> 
<p>HSC2-PH0.9-E1, E2</p>
<p>Short length type (For Cable Diameter: 2 mm)</p> 
<p>HSC2-PH2-E1-A</p>
<p>Short length type (For Cable Diameter: 3mm)</p> 
<p>HSC2-PH3-A</p>

Adapter

<p>4-Position Adapter Panel Mounting type</p> 
<p>HSC2-4A HSC2-4A-D1</p>
<p>5-Position Adapter Panel Mounting type</p> 
<p>HSC2-5A</p>

Simplified receptacle


<p>HSC2-8SR-1 HSC2-8SR-D1</p>

Duplex type

<Plug Housings>

F type

Plug Housing
(For Cable Diameter: 2mm&3mm)

HSCF-2PH2-E1,E2
HSCF-2PH3-B1,B2



<Complies with ANSI Standard for adjustable Type>

For Single mode
(For Cable Diameter: 2mm&3mm)

HSCM-2SPH2-B1,B2
HSCM-2SPH3-B1,B2



For Multi mode
(For Cable Diameter: 2 mm & 3mm)

HSCM-2GPH2-B1
HSCM-2GPH3-B1



H type

Plug Housing
(For Cable Diameter: 2 mm & 3mm)

HSCH-2PH2-B1,B2
HSCH-2PH3-B1,B2



<Adapters>

F type

Panel Mounting

HSCF-2A(P)
HSCF-2A-D(P)



H type

Snap - in

HSCH-2A1(P)
HSCH-2A1-D(P)



Screw Mounting

HSCH-2A(P)
HSCH-2A-D(P)



Fixed attenuators

For single mode



HSC-AT 11K-A**

See Page 85 for details.

For GI



HSC-AT5S-B**A

Terminators

Plug type



HSC-TM-P1

Tool- Insertion/Removal



HSC2-TM-P1

Receptacle type



HSC-TM-R1

See Page 89 for details.

Tool Insertion/Removal



HSC2-TM-R1

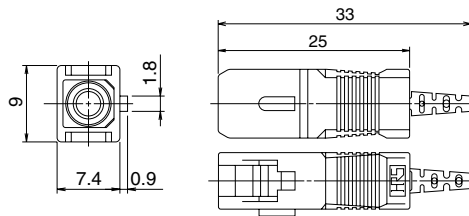
Simplex type

● Strain relief type



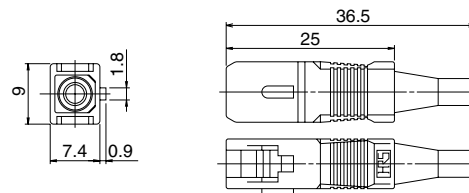
Part Number	CL No.	Fiber cable type	Boot color	Polishing type	Outer jacket fixing
HSC-PH2-E1(31)	704-0327-3-31	φ2mm	Blue	PC	Glue
HSC-PH2-E2(31)	704-0328-6-31		Light purple	AdPC	
HSC-PH2-E5(31)	704-3108-6-31		Green	APC	
HSC-PH3-B1(31)	704-0222-5-31	φ3mm	Blue	PC	Crimp
HSC-PH3-B2(31)	704-0223-8-31		Light purple	AdPC	
HSC-PH3-B5(31)	704-3020-7-31		Green	APC	

● Light weight type (For 0.9mm fiber)



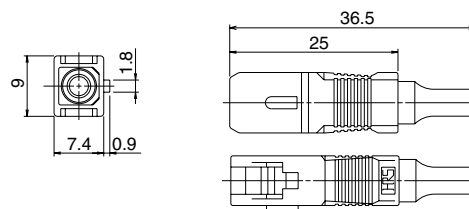
Part Number	CL No.	Boot color	Polishing type
HSC-PH0.9-E1(06)	704-0339-2-06	Blue	PC
HSC-PH0.9-E2(31)	704-0354-6-31	Light purple	AdPC
HSC-PH0.9-E5(31)	704-3104-5-31	Green	APC

● Short length type (For 2mm Cable)



Part Number	CL No.	Boot color	Polishing type	Outer jacket fixing
HSC-PH2-E1-A(31)	704-0464-4-31	Blue	PC	Glue
HSC-PH2-E2-A(31)	704-0480-0-31	Light purple	AdPC	
HSC-PH2-E5-A	704-3124-2	Green	APC	

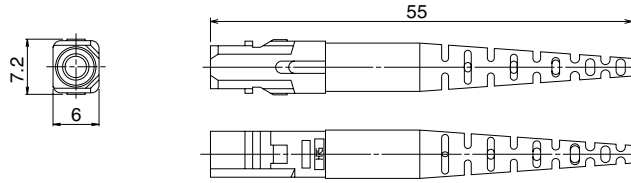
● Short length type (For 3mm Cable)



Part Number	CL No.	Boot color	Polishing type	Outer jacket fixing
HSC-PH3-A4(31)	704-0245-0-31	Blue	PC	Crimp
HSC-PH3-A4(32)	704-0245-0-32	Light purple	AdPC	

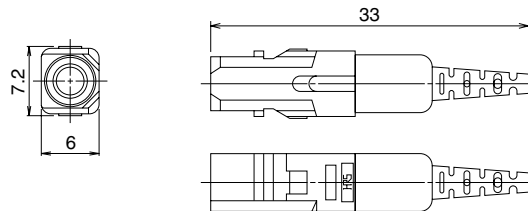
■ Tool Insertion/Extraction Plug Housings

● Strain relief type



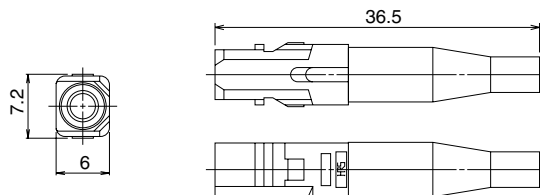
Part Number	CL No.	Fiber cable type	Boot color	Polishing type	Outer jacket fixing
HSC2-PH2-E1(31)	704-0329-9-31	φ2mm	Blue	PC	Glue
HSC2-PH2-E2(31)	704-0330-8-31		Light purple	AdPC	
HSC2-PH2-E5(31)	704-3109-9-31		Green	APC	
HSC2-PH3-B1(31)	704-0226-6-31	φ3mm	Blue	PC	Crimp
HSC2-PH3-B2(31)	704-0227-9-31		Light purple	AdPC	
HSC2-PH3-B5	704-3123-0		Green	APC	

● Light weight type (For 0.9mm fiber)



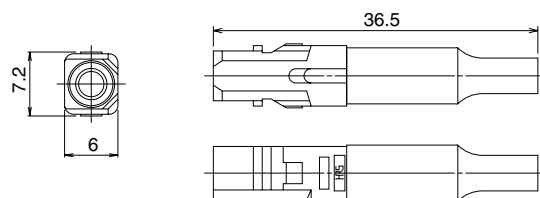
Part Number	CL No.	Boot color	Polishing type
HSC2-PH0.9-E1(31)	704-0421-1-31	Blue	UPC
HSC2-PH0.9-E2(31)	704-0422-4-31	Light purple	AdPC

● Short length type (For 2mm Cable)



Part Number	CL No.	Boot color	Polishing type	Outer jacket fixing
HSC2-PH2-E1-A	704-0482-6-00	Blue	PC	Glue
HSC2-PH2-E2-A	704-0481-3-00	Light purple	AdPC	

● Short length type (For 3mm Cable)



Part Number	CL No.	Boot color	Polishing type	Outer jacket attachment
HSC2-PH3-A(31)	704-0015-0-31	Blue	PC	Crimp

Note : Please contact HIROSE for other variations.

■ Receptacles

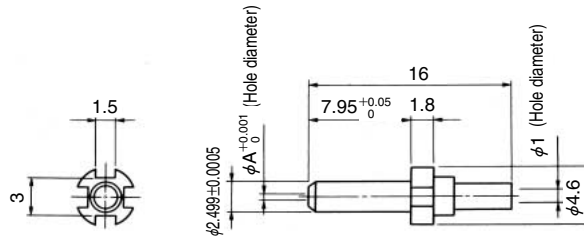


Note: Designed for power meter sensors

Part Number	CL No.	Remarks
HSC-R1-B(05)	704-0022-6-05	For MM
HSC-R2-B(05)	704-0023-9-05	For SM

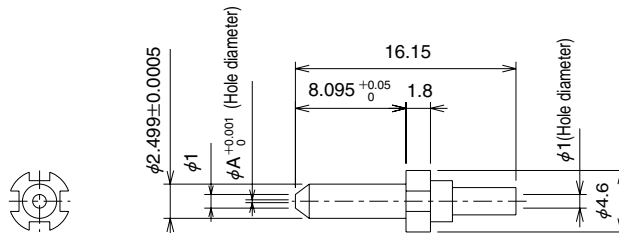
■ Ferrules

● For PC, AdPC and UPC



Part Number	CL No.	A dimension	Applicable Fiber cable
HSC-F321-A125(10)	704-0070-9-10	0.125	SM,MM
HSC-F321-A1255(10)	704-0200-2-10	0.1255	
HSC-F321-A126(10)	704-0071-1-10	0.126	

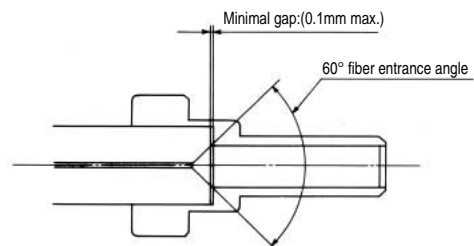
● For APC



Part Number	CL No.	A dimension	Applicable Fiber cable
HSC-F391-A125	704-3101-7	0.125	SM
HSC-F391-A126	704-3102-0	0.126	
HSC-F391-A127	704-3103-2	0.127	

(1) No gap design.

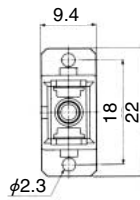
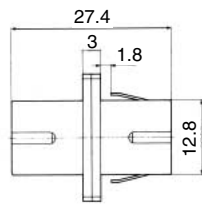
(2) The entrance angle of the fiber has been set at 60° for easy fiber insertion.



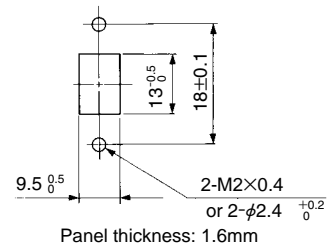
Adapters - Panel Mounting

SC adapters

SC/SC Plastic Housing

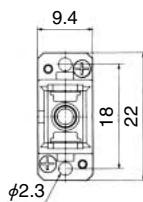
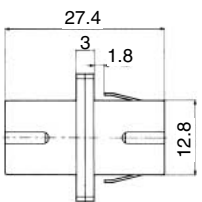


Panel cut-out

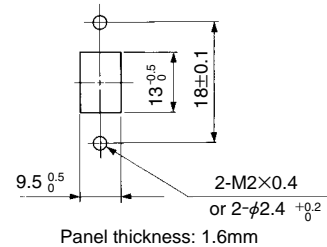


Part Number	CL No.	Split sleeve	Remarks
HSC-A3(51)	704-0092-1-51	Copper alloy	PC,AdPC
HSC-A3-D1(02)	704-0217-5-02	Zirconia	
HSC-A3-D2(06)	704-3007-9-06	Zirconia	APC

SC/SC Die Cast Metal Housing



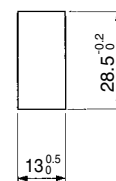
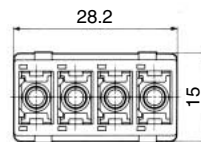
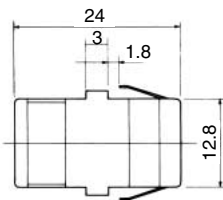
Panel cut-out



Part Number	CL No.	Split sleeve
HSC-A2(51)	704-0020-0-51	Copper alloy
HSC-A2-D1(01)	704-0258-2-01	Zirconia

SC2 adapters

SC/SC2 4-way adapter

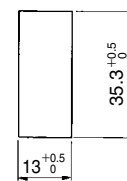
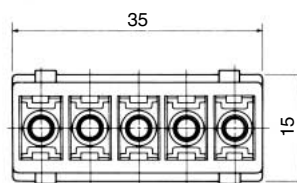
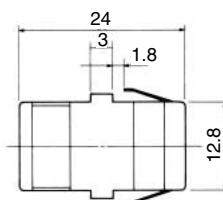


Panel thickness: 1.6mm

Part Number	CL No.	Split sleeve
HSC2-4A(51)	704-0024-1-51	Copper alloy
HSC2-4A-D1(01)	704-0290-5-01	Zirconia

Panel cut-out

SC/SC2 5-way adapter (for Multi-mode fiber)



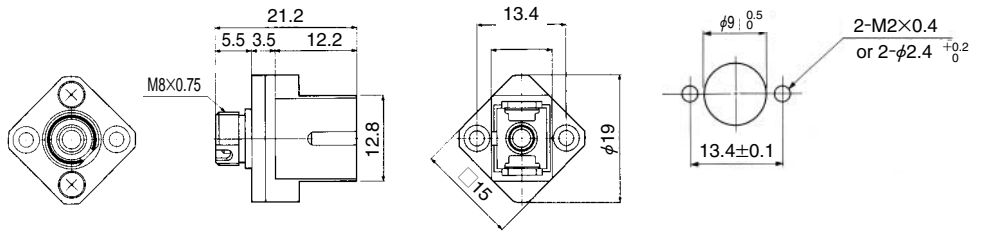
Panel thickness: 1.6mm

Part Number	CL No.	Split sleeve
HSC2-5A(51)	704-0025-4-51	Copper alloy

Panel cut-out

■ Conversion adapters

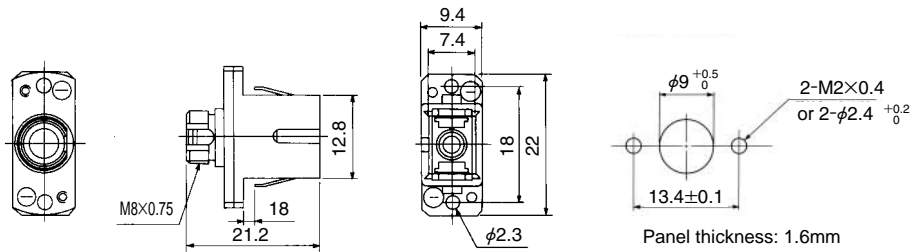
● FC / SC Screw Mounting



Part Number	CL No.	Split sleeve
HSCJ-HRFCJ-B(51)	704-0021-3-51	Copper alloy

◆ Panel cut-out

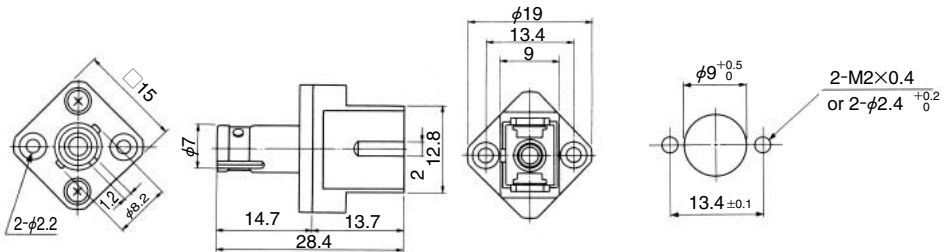
● FC / SC Snap-in and/or Screw Mounting



Part Number	CL No.	Split sleeve
HSCJ-HRFCJ-C(51)	704-0206-9-51	Copper alloy

◆ Panel cut-out

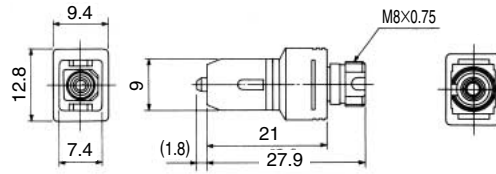
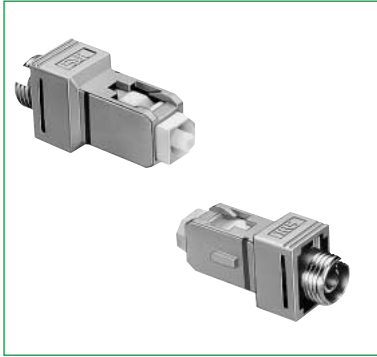
● ST / SC Screw Mounting



Part Number	CL No.	Split sleeve
HSCJ-HSTJ-B(51)	704-0102-3-51	Copper alloy

◆ Panel cut-out

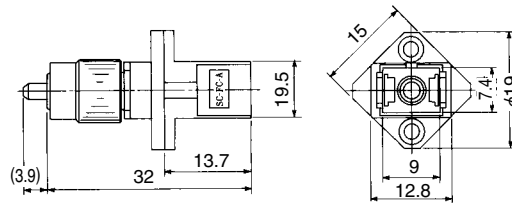
●FC / SC



Part Number	CL No.	Split sleeve	Polishing type	Applicable Fiber cable
HSCP-HRFCJ-1(51)	704-0203-0-51	Copper alloy	PC	GI-50/125
HSCP-HRFCJ-1AS(51)	704-0288-3-51		AdPC	
HSCP-HRFCJ-2(51)	704-0204-3-51		PC	SM-9.5/125
HSCP-HRFCJ-2AS(51)	704-0289-6-51		AdPC	

●The positions of SC guide key and FC guide slot will not be always aligned.

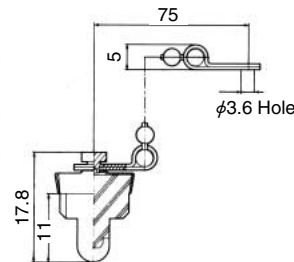
●FC / SC



Part Number	CL No.	Split sleeve	Polishing type	Applicable Fiber cable
HRFCP-HSCJ-1(51)	701-0065-0-51	Copper alloy	PC	GI-50/125
HRFCP-HSCJ-1AS(51)	701-0108-0-51		AdPC	
HRFCP-HSCJ-2(51)	701-0085-7-51		PC	SM-9.5/125
HRFCP-HSCJ-2AS(51)	701-0109-3-51		AdPC	

●The positions of SC guide slot and FC guide key will not be always aligned.

■Cap



Part Number	CL No.	Applicable products
HSC-C2	704-0061-8	HSC-A2 , HSC-A3 , HSCJ-HRFCJ-B , CHSCJ-HSTJ-B , HSC-R1-B , HSC-R2-B

◆ Mounting Dimensions

Unit: mm

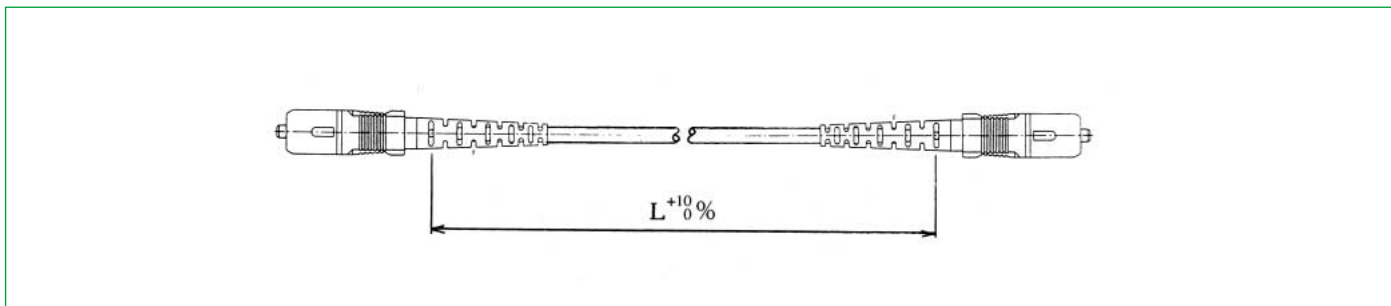


Combination		Dimensions					
Adapter	Housing	a	b	c	d	e	f
HSC-A2 HSC-A2-D1 HSC-A3 HSC-A3-D1	HSC-PH2-E1	58	28	15.2	53.4	23.4	10.6
	HSC-PH2-E2						
	HSC-PH3-B1						
	HSC-PH3-B2	39.5	28	15.2	34.9	23.4	10.6
	HSC-PH2-E1-A						
	HSC-PH3-A4						
HSC-PH0.9-E1	36	26	15.2	31.4	21.4	10.6	
HSC2-4A HSC2-4A-D1 HSC2-5A HSC2-5A-D1	HSC2-PH2-E1	58	—	13.5	53.4	—	8.9
	HSC2-PH2-E2						
	HSC2-PH3-B1						
	HSC2-PH3-B2	39.5	—	13.5	34.9	—	8.9
	HSC2-PH3-A						
	HSC-PH2-E1-A						
HSC2-PH0.9-E1	36	—	13.5	31.4	—	8.9	
HSC-R1-B HSC-R2-B	HSC-PH2-E1	57.5	27.5	14.7	—	—	—
	HSC-PH2-E2						
	HSC-PH3-B1						
	HSC-PH3-B2						

Note: Panel thickness: 1.6mm

■ Cable assembly

● SC strain relief type.



Part Number	CL No.	Fiber cable type	Polishing type	Cable Diameter
HSC-SPE2-F3Q-L	704-1073-2	SM-9.5/125	PC	φ2mm
HSC-SPC2-F3A-L	704-1089-2			φ3mm
HSC-ASPE2-F3Q-L	704-1071-7		AdPC	φ2mm
HSC-ASPC2-F3A-L	704-1094-2			φ3mm
HSC-CSPE2-F3Q-L	—		APC	φ2mm
HSC-CSPC2-F3A-L	—			φ3mm
HSC-SPE2-F3P-L	704-1081-0	GI-50/125	PC	φ2mm
HSC-SPC2-F3B-L	704-1086-4			φ3mm

Note 1: The "L" within the Product Number indicates the length of the cable illustrated on the drawing. Please specify values in metric units.

Note 2: HSC2 cable assemblies are also available.

Note 3: APC polishing is performed at an angle of 8°. Mating with connectors polished PC or AdPC is not possible.

Note : Please contact HIROSE if you have any requests.

■Tools

●Crimp Tool



Part Number	CL No.	Applicable connector
HSC-T3	704-0287-0	SC plug for 2mm, 3mm cable.

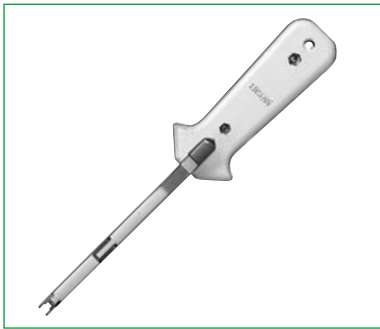
(This is used in crimping of Kevlar at time of the plug termination.)

<Locations>



- (1) 2mm Jacket crimping: Please select section A
- 3mm Jacket crimping: Please select section C
- (2) Kevlar™ crimping: Please select section B

●HSC2 Insertion/Extraction Tool



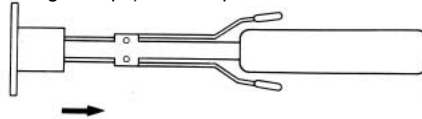
Part Number	CL No.	Applicable Products
HSC-T1-L	704-0286-8	HSC2 series.

<How to operate>

1. Open the tip of tool by compressing levers as shown below.



2. Insert the tool (with opening the tips) into adapter.



3. Release the levers (then the tool catch HSC2 plug) and you can release the connector.

●Plug assemble Tool



Part Number	CL No.
HSC2-PH2/CVMD	902-6029-1

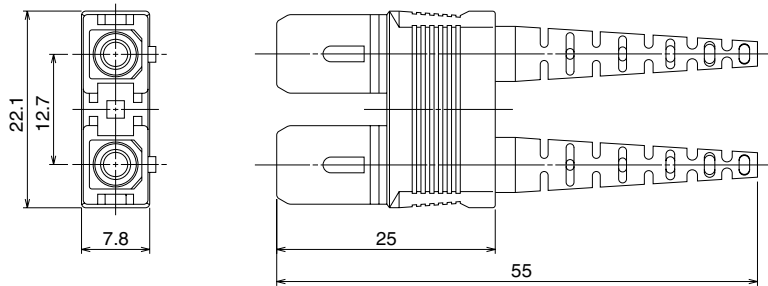
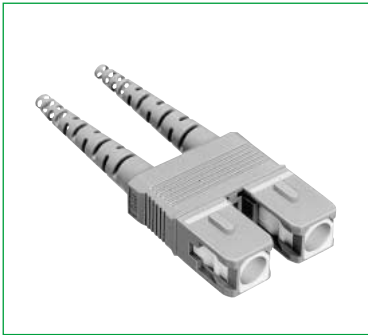
SC Duplex

◆Notes

SC duplex adapters can be also connected with Simplex SC plugs.
 SC type attenuators (HSC-AT11K-A※-※) can be connected only with F type adapters.

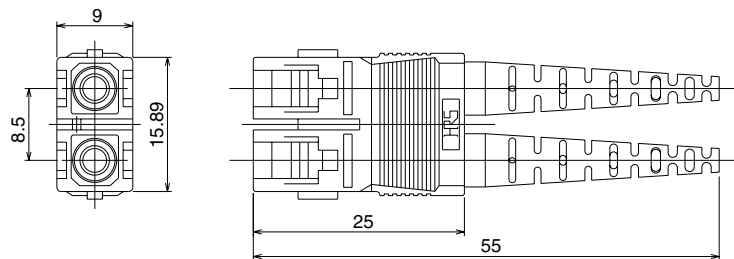
■Plug Housing

●F Type



Part Number	CL No.	Applicable Cable Diameter	Boot Color	Polishing type
HSCF-2PH2-E1(P)(31)	704-2109-3-31	φ2mm	Blue	PC
HSCF-2PH2-E2(P)(31)	704-2120-6-31		Light purple	AdPC
HSCF-2PH3-B1(P)(31)	704-2032-0-31	φ3mm	Blue	PC
HSCF-2PH3-B2(P)(31)	704-2036-1-31		Light purple	AdPC

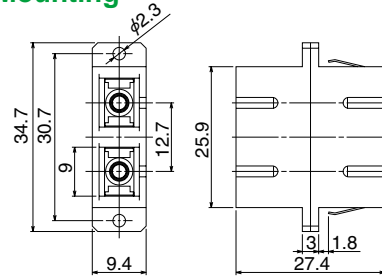
●H Type



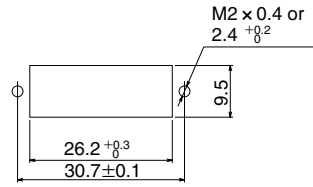
Part Number	CL No.	Applicable Cable Diameter	Boot Color	Polishing type
HSCH-2PH2-B1(P)(31)	704-2046-5-31	φ2mm	Blue	PC
HSCH-2PH2-B2(P)(31)	704-2058-4-31		Light purple	AdPC
HSCH-2PH3-B1(P)(31)	704-2054-3-31	φ3mm	Blue	PC
HSCH-2PH3-B2(P)(31)	704-2050-2-31		Light purple	AdPC

Adapters

F type Snap-in and/or Screw Mounting



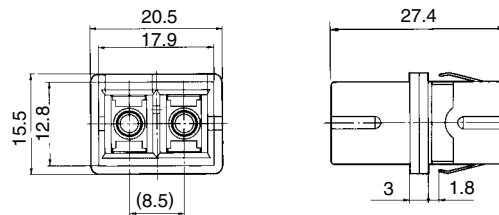
Panel cut-out



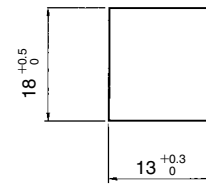
Panel thickness: 1.6mm

Part Number	CL No.	Split sleeve	Color
HSCF-2A(P)(51)	704-2008-6-51	Copper sleeve	Blue
HSCF-2A-D(P)(06)	704-2040-9-06	Zirconia	
HSCF-2A-D2(P)(06)	704-2112-8-06	Zirconia	Green

H type Snap-in



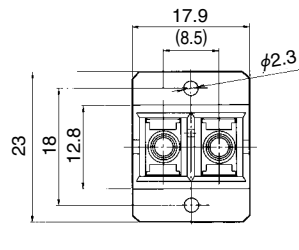
Panel cut-out



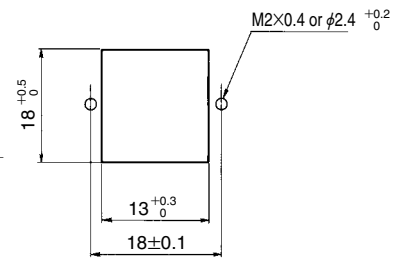
Panel thickness: 1.6mm

Part Number	CL No.	Split sleeve	Color
HSCH-2A1(P)(51)	704-2066-2-51	Copper sleeve	Blue
HSCH-2A1-D(P)(02)	704-2117-1-02	Zirconia	

H type Snap-in and/or Screw Mounting



Panel cut-out



Panel thickness: 1.6mm

Part Number	CL No.	Split sleeve	Color
HSCH-2A(P)(51)	704-2020-1-51	Copper sleeve	Blue
HSCH-2A-D(P)(02)	704-2062-1-02	Zirconia	
HSCH-2A-D2(P)(03)	704-2108-0-03	Zirconia	Green

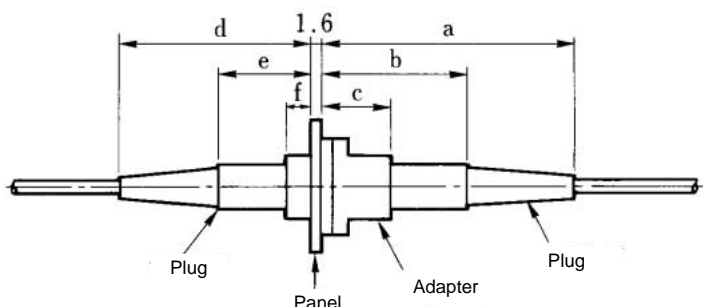
◆SC Duplex connector assemblies.

Part Number	CL No.	Fiber cable type	Polishing type	Cable Diameter
HSCF-SP2PP-F3Q-L	704-4031-9	SM-9.5/125	PC	φ2mm
HSCH-SP2PP-F3Q-L	---			φ2mm Zip cord
HSCF-SP2PP-F3QW-L	---			φ3mm
HSCH-SP2PP-F3QW-L	---			φ3mm Zip cord
HSCF-SP2PP-F3A-L	---			φ3mm
HSCH-SP2PP-F3A-L	---			φ3mm Zip cord
HSCF-SP2PP-F3AW-L	704-4013-7		AdPC	φ2mm
HSCH-SP2PP-F3AW-L	---			φ2mm Zip cord
HSCF-ASP2PP-F3Q-L	---			φ3mm
HSCH-ASP2PP-F3Q-L	---			φ3mm Zip cord
HSCF-ASP2PP-F3QW-L	---			φ3mm
HSCH-ASP2PP-F3QW-L	---			φ3mm Zip cord
HSCF-ASP2PP-F3A-L	---		PC	φ2mm
HSCH-ASP2PP-F3A-L	---			φ2mm Zip cord
HSCF-ASP2PP-F3AW-L	---			φ3mm
HSCH-ASP2PP-F3AW-L	---			φ3mm Zip cord
HSCF-SP2PP-F3P-L	704-4038-8	GI-50/125		φ2mm
HSCH-SP2PP-F3P-L	---			φ2mm Zip cord
HSCF-SP2PP-F3PW-L	---		φ3mm	
HSCH-SP2PP-F3PW-L	---		φ3mm Zip cord	
HSCF-SP2PP-F3B-L	---		φ3mm	
HSCH-SP2PP-F3B-L	---		φ3mm Zip cord	
HSCF-SP2PP-F3BW-L	704-4039-0	---	φ3mm	
HSCH-SP2PP-F3BW-L	---		φ3mm Zip cord	

Note 1: The "L" within the Product Number indicates the length of the cable. Please specify "L" in mm.

Note 2: Please contact us if you have any requests. HIROSE will offer excellent solutions to meet your requirements.

◆Mounting Dimensions



<F Type>

Unit: mm

Combination		Dimensions					
Adapter	Housing	a	b	c	d	e	f
HSCF-2A(P) HSCF-2A-D(P)	HSC-PH*-E# HSCF-PH*-B#(P)	58	28	15.2	53.4	23.4	10.6
	HSC-PH*-A4	39.5	28	15.2	34.9	23.4	10.6
	HSC-PH0.9-E#	36	26	15.2	31.4	21.4	10.6

<H Type>

Combination		Dimensions					
Adapter	Housing	a	b	c	d	e	f
HSCH-2A(P) HSCH-2A-D(P) HSCH-2A1(P)	HSC-PH*-E# HSCH-2PH*-B#(P)	58	28	15.2	53.4	23.4	10.6
	HSC-PH*-A4	39.5	28	15.2	34.9	23.4	10.6
	HSC-PH0.9-E#	36	26	15.2	31.4	21.4	10.6

Note 1: * indicates cable diameter: 2= φ2mm diameter

3= φ3mm diameter

Note 2: # indicates polishing type: 1= PC polishing

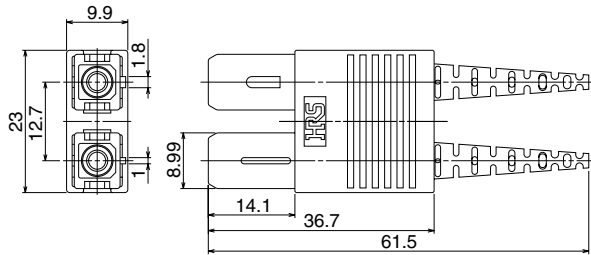
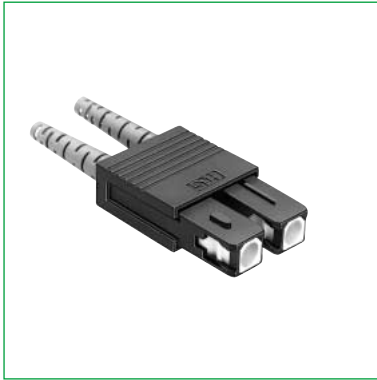
2= AdPC polishing

Complies with ANSI Standard

ANSI X3T9.3 Fibre Channel Physical and Signaling Interface

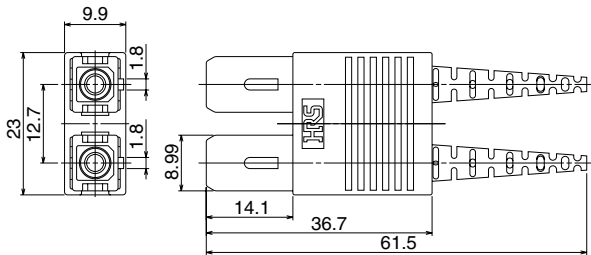
■ Plug Housings

● For Single Mode



Part Number	CL No.	Applicable cable	Boot color	Polishing type
HSCM-2SPH2-B1	704-2100-9	Simplex-2mm dia. cable or dual fiber zip cable	Blue	PC
HSCM-2SPH3-B1	704-2102-4	Simplex-3mm dia. cable or dual fiber zip cable		
HSCM-2SPH2-B2	704-2133-8	Simplex-2mm dia. cable or dual fiber zip cable	Light purple	AdPC
HSCM-2SPH3-B2	—	Simplex-3mm dia. cable or dual fiber zip cable		

● For Multi-mode



Part Number	CL No.	Applicable cable	Boot color	Polishing type
HSCM-2GPH2-B1	704-2104-0	Simplex-2mm dia. cable or dual fiber zip cable	Blue	PC
HSCM-2GPH3-B1	704-2106-5	Simplex-3mm dia. cable or dual fiber zip cable		

■ Ferrules

Conventional SC ferrules.
Refer to page 33 for details.

■ Adapters

F type SC adapters.
Refer to page 40 for details.

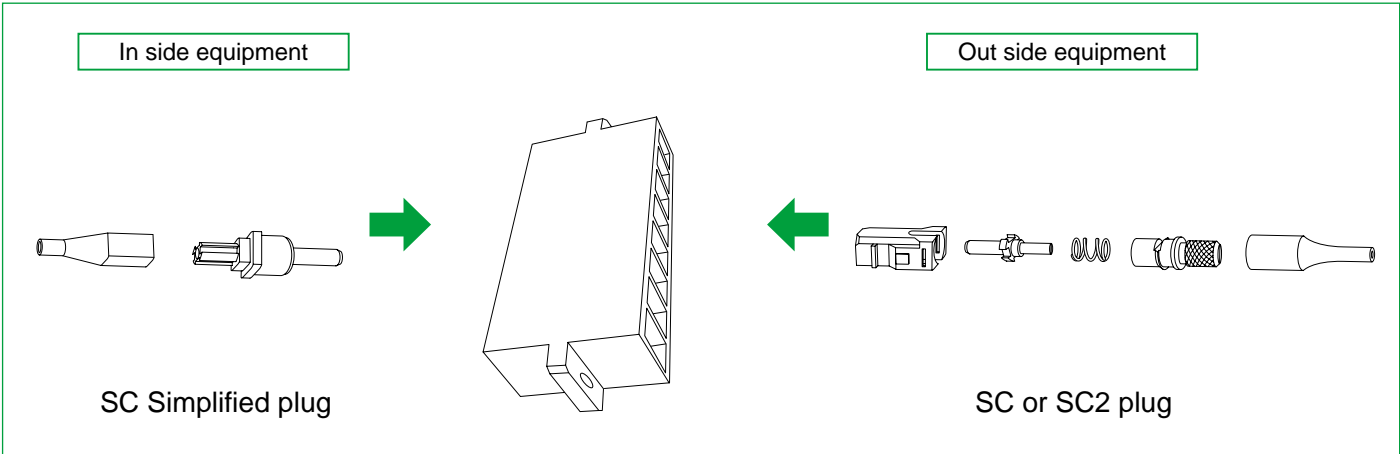
Simplified Receptacles & Plugs

■ Features

1.Space saving: Only 23.8mm plug length.

Types of SC plug	Length(mm)
Simplified plug	23.8
SC plug for 0.9mm fiber	33
SC2 plug for 0.9mm fiber	33

Installation image



■ Product Specifications

Ratings		Operating temperature range		-25°C to +70°C		Storage temperature range		-25°C to +70°C		
Item		Test Method (IEC 61300)				Specifications				
Optical Characteristics	Insertion Loss	(SM)	Wavelength 1310nm (LD)				0.5dB max. (PC, AdPC)			
		(GI)	Wavelength 1310nm (LED)				0.3dB max. (PC)			
	Return Loss	(SM)	Wavelength 1310nm (LD)				22dB min. (PC) 40dB min. (AdPC)			
		(GI)					22dB min. (PC)			
Mechanical Characteristics	Ferrule withdrawal		Extract zirconia gauge 2.499 ±0.0005 mm dia from split sleeve.				Copper alloy split sleeve		2N to 5.9N	
	Durability (cycles, mating/un-mating)		1000 times				Insertion loss fluctuation after test: 0.2dB max. No visible damage, cracks or part dislocation.			
	Vibration		Frequency: 10 to 55 Hz, single amplitude of 0.75 mm, 2 hours in each of the 3 axis.							
	Shock		Acceleration of 981 m/s ² , 6 ms duration, sine half-wave waveform, 10 cycles in each of the 3 axis.							
Humidity resistance (Temperature/ humidity- cycles)		Temperature: -10°C to 65°C, humidity: 90% to 96% 20 cycles								
Environmental Characteristics	Change of temperature		Temperature: -40°C → +75°C 42cycles (Complies with Telcordia standard GR-326-CORE)				Insertion loss fluctuation after test: 0.2dB max. No visible damage, cracks or part dislocation.			
	Dry Heat		960 hours at 85°C							
	Cold		960 hours at -25°C							

■ Materials

● Simplified receptacle

Part	Material
Housing	Synthetic resin
Sleeve	Synthetic resin
Split sleeve	Zirconia or Copper alloy
Plate	Stainless steel
Dust cap	Synthetic resin

● Simplified plug

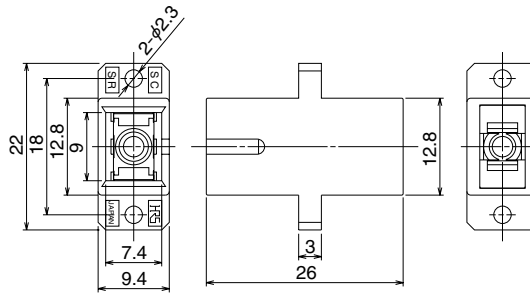
Part	Material
Ferrule	Zirconia and Synthetic resin
Boot	Synthetic resin
Ferrule cap	Synthetic resin

● Simplified plug extraction tool

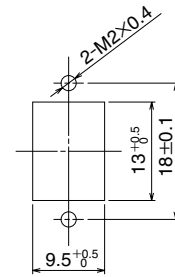
Part	Material
Extraction tool	Synthetic resin

■ Simplified receptacle to SC

● Simplex / Shrouded

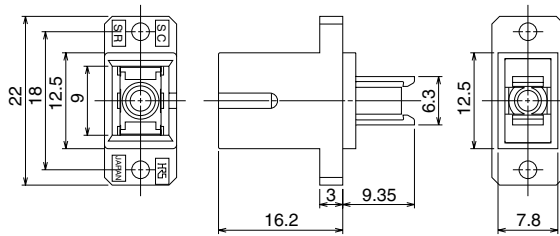


◆ Panel cut-out

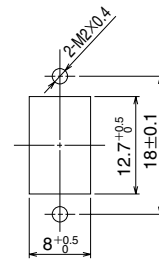


Part Number	CL No.	Split sleeve	Color
HSC-SR-1(51)	704-0320-4-51	Copper alloy	Blue
HSC-SR-D1(02)	704-0321-7-02	Zirconia	
HSC-SR-1(03)	704-0320-4-03	None	

● Simplex / Unshrouded

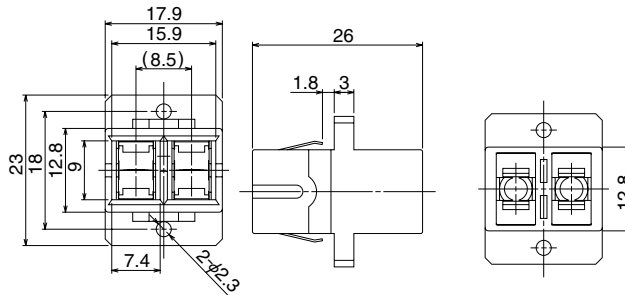


◆ Panel cut-out

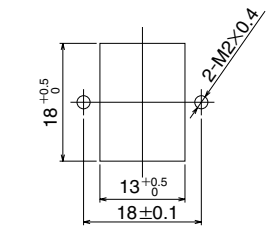


Part Number	CL No.	Split sleeve	Color
HSC-SR-2(51)	704-0291-8-51	Copper alloy	Blue
HSC-SR-D2(06)	704-0292-0-06	Zirconia	
HSC-SR-2(03)	704-0291-8-03	None	

● Duplex H type / Shrouded



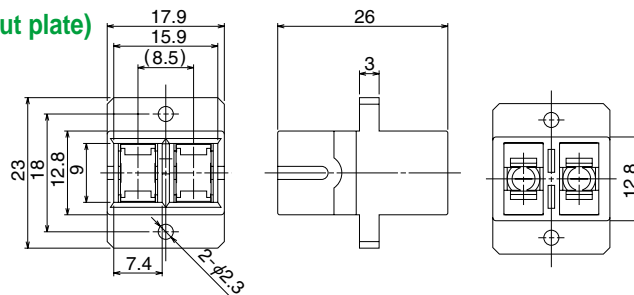
◆ Panel cut-out



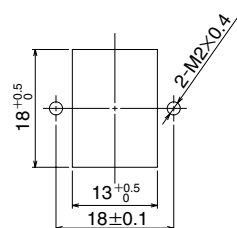
Panel thickness: 1.6mm

Part Number	CL No.	Split sleeve	Color
HSCH-2SR-1(R)(51)	704-0293-3-51	Copper alloy	Blue
HSCH-2SR-D1(R)(01)	704-0294-6-01	Zirconia	
HSCH-2SR-1(R)(03)	704-0293-3-03	None	

● Duplex H type / Shrouded (Without plate)

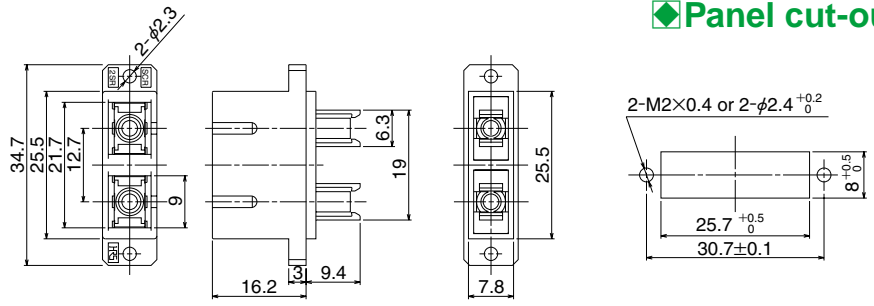
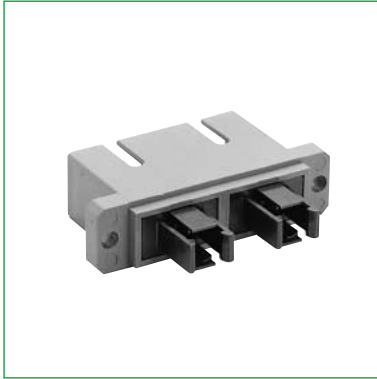


◆ Panel cut-out



Part Number	CL No.	Split sleeve	Color
HSCH-2SR-3(R)(51)	704-0300-7-51	Copper alloy	Blue
HSCH-2SR-D3(R)(01)	704-0301-0-01	Zirconia	
HSCH-2SR-3(R)(03)	704-0300-7-03	None	

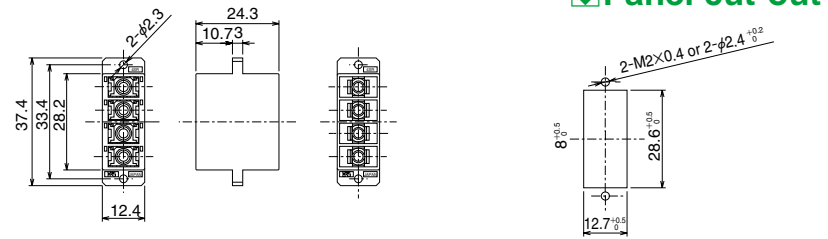
● Duplex F Type / Unshrouded



Part Number	CL No.	Split sleeve	Color
HSCF-2SR-2(P)(51)	704-0295-9-51	Copper alloy	Blue
HSCF-2SR-D2(P)(02)	704-0296-1-02	Zirconia	
HSCF-2SR-2(P)(03)	704-0295-9-03	None	

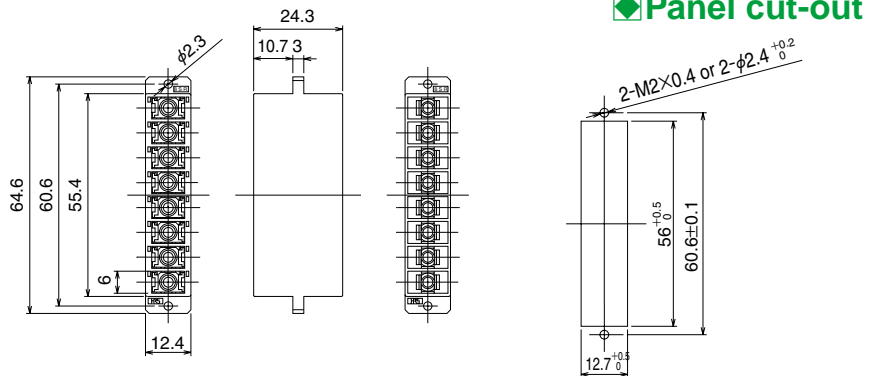
■ Simplified Receptacles to SC2

● 4-position / Shrouded



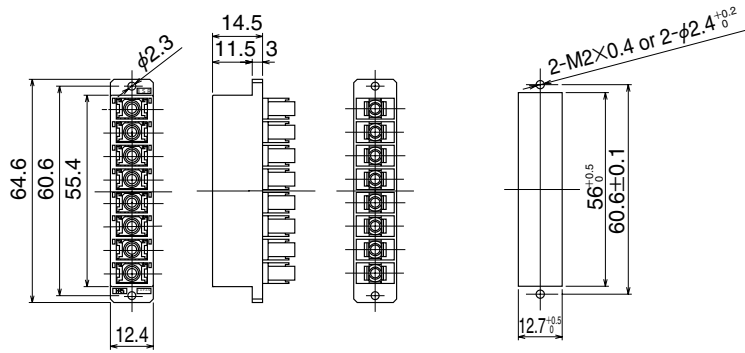
Part Number	CL No.	Split sleeve	Color
HSC2-4SR-1(51)	704-0311-3-51	Copper alloy	Blue
HSC2-4SR-D1(01)	704-0312-6-01	Zirconia	
HSC2-4SR-1(03)	704-0311-3-03	None	

● 8-Position / Shrouded



Part Number	CL No.	Split sleeve	Color
HSC2-8SR-1(51)	704-0266-0-51	Copper alloy	Blue
HSC2-8SR-D1(01)	704-0270-8-01	Zirconia	
HSC2-8SR-1(03)	704-0266-0-03	None	

●8-Position / Unshrouded

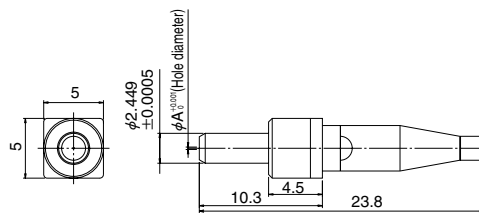


Part Number	CL No.	Split sleeve	Color
HSC2-8SR-2(51)	704-0318-2-51	Copper alloy	Blue
HSC2-8SR-D2(01)	704-0403-0-01	Zirconia	
HSC2-8SR-2(03)	704-0318-2-03	None	

◆Panel cut-out

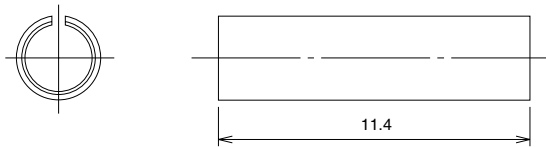
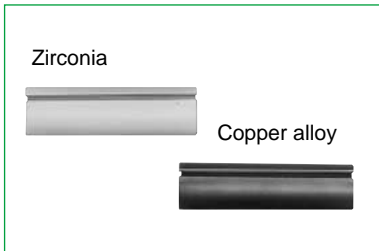
■Simplified plug

●for 0.9mm fiber



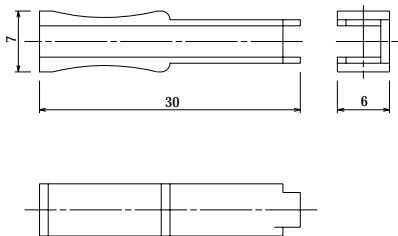
Part Number	CL No.	A dimension	Boot color
HSC2-FK-A125(31)	704-0267-3-31	0.125	Black
HSC2-FK-A126(31)	704-0268-6-31	0.126	
HSC2-FK-A1255(31)	704-0269-9-31	0.1255	

■Split sleeve

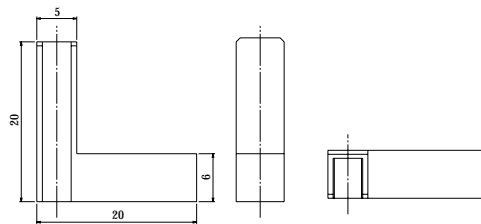


Part Number	CL No.	Split sleeve
HSC-SLIT-SLEEVE(51)	704-0275-1-51	Copper alloy
HSC-D	704-0264-5	Zirconia

■Extraction tool for Simplified plug



Part Number	CL No.
HSC-T10	704-0350-5



Part Number	CL No.
HSC-T12	704-0448-8



Компания «ЭлектроПласт» предлагает заключение долгосрочных отношений при поставках импортных электронных компонентов на взаимовыгодных условиях!

Наши преимущества:

- Оперативные поставки широкого спектра электронных компонентов отечественного и импортного производства напрямую от производителей и с крупнейших мировых складов;
- Поставка более 17-ти миллионов наименований электронных компонентов;
- Поставка сложных, дефицитных, либо снятых с производства позиций;
- Оперативные сроки поставки под заказ (от 5 рабочих дней);
- Экспресс доставка в любую точку России;
- Техническая поддержка проекта, помощь в подборе аналогов, поставка прототипов;
- Система менеджмента качества сертифицирована по Международному стандарту ISO 9001;
- Лицензия ФСБ на осуществление работ с использованием сведений, составляющих государственную тайну;
- Поставка специализированных компонентов (Xilinx, Altera, Analog Devices, Intersil, Interpoint, Microsemi, Aeroflex, Peregrine, Syfer, Eurofarad, Texas Instrument, Miteq, Cobham, E2V, MA-COM, Hittite, Mini-Circuits, General Dynamics и др.);

Помимо этого, одним из направлений компании «ЭлектроПласт» является направление «Источники питания». Мы предлагаем Вам помощь Конструкторского отдела:

- Подбор оптимального решения, техническое обоснование при выборе компонента;
- Подбор аналогов;
- Консультации по применению компонента;
- Поставка образцов и прототипов;
- Техническая поддержка проекта;
- Защита от снятия компонента с производства.



Как с нами связаться

Телефон: 8 (812) 309 58 32 (многоканальный)

Факс: 8 (812) 320-02-42

Электронная почта: org@eplast1.ru

Адрес: 198099, г. Санкт-Петербург, ул. Калинина, дом 2, корпус 4, литера А.