

WIZ820io User Manual

(Version 1.0)



©2011 WIZnet Co., Ltd. All Rights Reserved.

☞ For more information, visit our website at <http://www.wiznet.co.kr>

Document Revision History

Date	Revision	Changes
2011-09-15	V1.0	Official Release

1. Introduction

WIZ820io is the internet offload network module that includes W5200 (TCP/IP hardwired chip, include PHY), MAG-JACK (RJ45 with X'FMR) with other glue logics. It can be used as a component and no effort is required to interface W5200 and Transformer.

The WIZ820io is an ideal option for users who want to develop their Internet enabling systems rapidly.

For the detailed information on implementation of Hardware TCP/IP, refer to the W5200 Datasheet.

WIZ820io consists of W5200 and MAG-JACK.

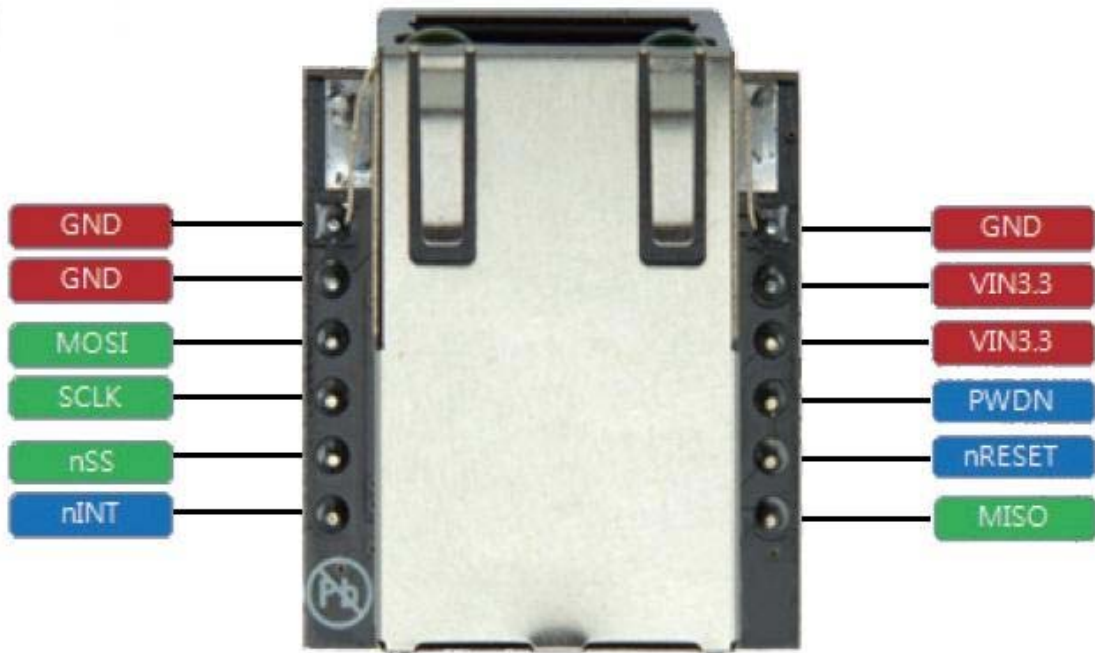
- TCP/IP, Ethernet MAC : W5200
- Ethernet PHY : Included in W5200
- Connector : MAG-JACK(RJ45 with Transformer)

1.1 Feature

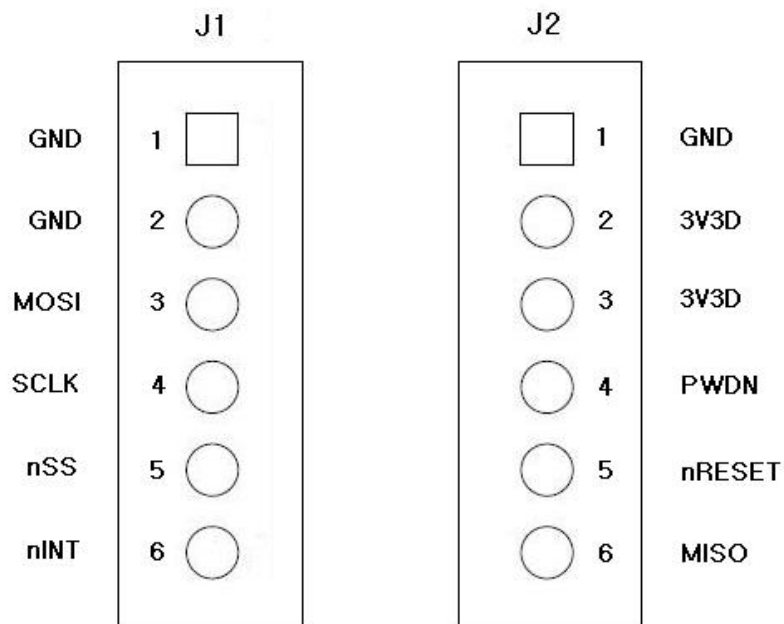
- Supports 10/100 Base TX
- Supports half/full duplex operation
- Supports auto-negotiation and auto cross-over detection
- IEEE 802.3/802.3u Compliance
- Supports high speed SPI Interface (SPI mode 0, 3)
- Operates 3.3V with 5V I/O signal tolerance
- Supports network status indicator LEDs
- Includes Hardware Internet protocols: TCP, IPv4, UDP, ICMP, ARP, PPPoE, IGMP
- Includes Hardware Ethernet protocols: DLC, MAC
- Supports 8 independent connections simultaneously
- Supports Power down mode
- Supports Wake On LAN
- Supports Socket API for easy application programming
- Interfaces with two 2.54mm pitch 1 x 6 header pin
- Very small form factor: 23mm x 25mm (PCB size)

2. Pin assignment & description

2.1 Pin assignment



< TOP side view >



< Pin assignment >

2.2 Pin description

Pin No.	I/O	Pin Name	Description	
J1	1	P	GND	Ground
	2	P	GND	Ground
	3	I	MOSI	SPI Master Out Slave In This pin is used to SPI MOSI signal pin.
	4	I	SCLK	SPI Clock This pin is used to SPI Clock Signal pin.
	5	I	nSS	SPI Slave Select : Active Low This pin is used to SPI Slave Select signal Pin when using SPI interface.
	6	O	nINT	Interrupt : Active low This pin indicates that W5200 requires MCU attention after socket connecting, disconnecting, data receiving timeout, and WOL (Wake on LAN). The interrupt is cleared by writing IR Register or Sn_IR (Socket n-th Interrupt Register). All interrupts are maskable.
J2	1	P	GND	Ground
	2	P	3V3D	Power : 3.3 V power supply
	3	P	3V3D	Power : 3.3 V power supply
	4	I	PWDN	Power Down : Active High This pin is used to power down pin. Low : Normal Mode Enable High : Power Down Mode Enable
	5	I	nRESET	Reset : This pin is active low input to initialize or re-initialize W5200. It should be held at least 2us after low assert, and wait for at least 150ms after high de-assert in order for PLL logic to be stable.
	6	O	MISO	SPI Master In Slave Out This pin is used to SPI MISO signal pin.

3. Device SPI operations

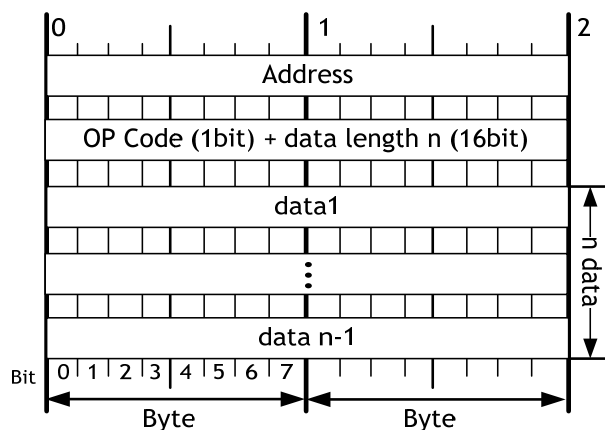
WIZ820io is controlled by a set of instruction that is sent from a external host , commonly referred to as the SPI Master. The SPI Master communicates with W5200 via the SPI bus, which is composed of four signal lines: Slave Chip Select (nSS), Serial Clock (SCLK), MOSI (Master Out Slave In) and MISO (Master In Slave Out).

The SPI protocol defines four modes for its operation (Mode 0-3). Each mode differs according to the SCLK polarity and phase - how the polarity and phase control the flow of data on the SPI bus. The W5200 operates as SPI Slave device and supports the most common modes - SPI Mode 0 and 3.

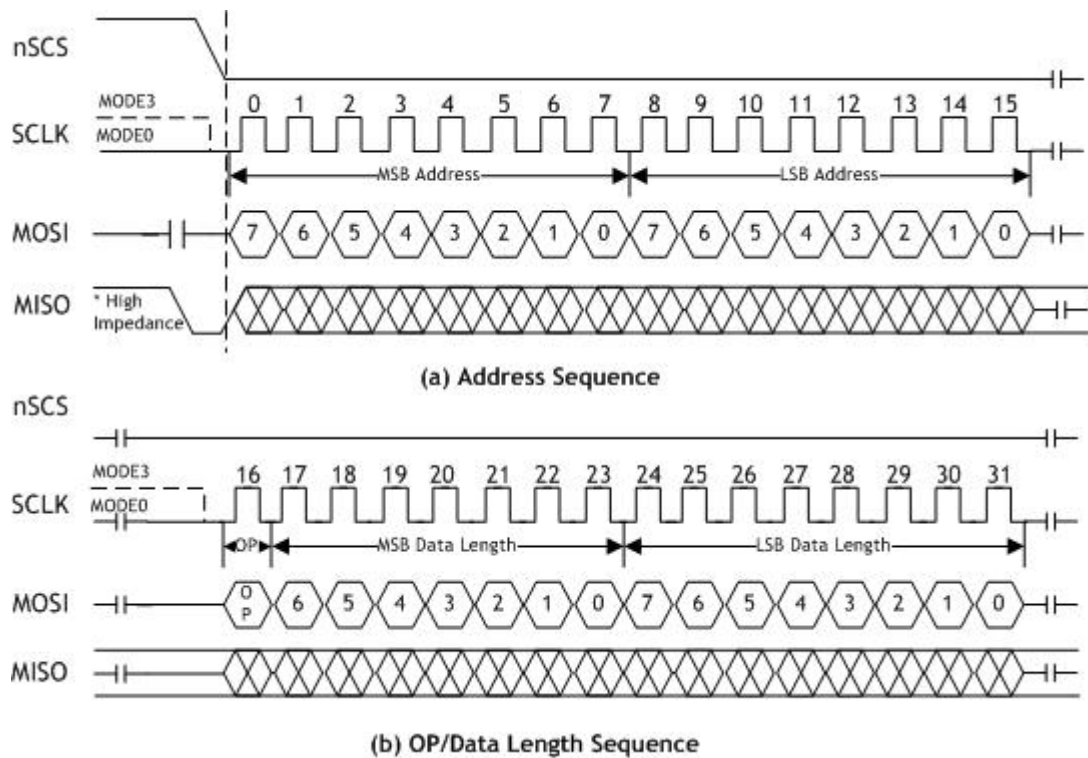
The only difference between SPI Mode 0 and 3 is the polarity of the SCLK signal at the inactive state. With SPI Mode 0 and 3, data is always latched in on the rising edge of SCLK and always output on the falling edge of SCLK.

3.1 Process of using general SPI Master device

1. Configure Input/Output direction on SPI Master Device pins.
2. Configure nSCS as 'High' on inactive
3. Write target address for transmission on SPDR register (SPI Data Register).
4. Write OP code and data length for transmission on SPDR register.
5. Write desired data for transmission on SPDR register.
6. Configure nSCS as 'Low' (data transfer start)
7. Wait for reception complete
8. If all data transmission ends, configure nSCS as 'High'



< W5200 SPI Frame Format >

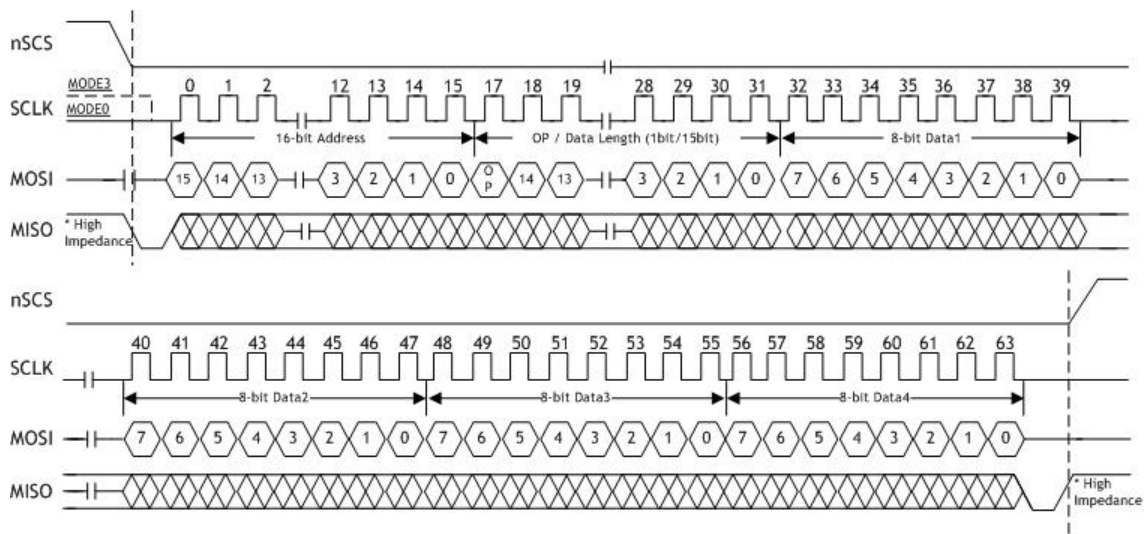


< Address and OP/DATA Length Sequence Diagram >

3.2 Read processing

The READ processing is entered by driving nSS low, followed by the Address, the OP code, the Data Length and the Data byte on MOSI. The OP code (OP) is defined type of the READ OP and WRITE OP. On OP = 0, the read operation is selected. Otherwise, On OP = 1, the write operation is selected.

In W5200 SPI mode, the Byte READ processing and the burst READ processing are provided. The Byte READ processing takes 4 instructions which consist of the 16-bit Address, the 1-bit OP code (0x0), the 15-bit Data length and 8-bit Data. Otherwise, The Burst READ processing only takes the Data instruction after the setting of the burst read processing. To distinguish between the Byte READ and the burst READ processing, the Data length is used. If the Data length is '1,' the Byte READ processing is operated. Otherwise, the Burst READ Processing is operated when the Data length is more than two. The MISO pin should be selected by driving MISO low after the falling edge of the nSS.



< Read Sequence >

```

/* Pseudo Code for Read data of 8bit per packet */
#define data_read_command    0x00
uint16 addr;    // Address : 16bits
int16 data_len; // Data length :15bits
uint8 data_buf[]; // Array for data
SpiSendData(); // Send data from MCU to W5200
SpiRecvData(); // Receive data from W5200 to MCU

{
ISR_DISABLE(); // Interrupt Service Routine disable
CSoff(); // CS=0, SPI start

// SpiSendData
SpiSendData(((addr+idx) & 0xFF00) >> 8); // Address byte 1
SpiSendData((addr+idx) & 0x00FF); // Address byte 2

// Data write command + Data length upper 7bits
SpiSendData((data_read_command | ((data_len& 0x7F00) >> 8)));
// Data length bottom 8bits
SpiSendData((data_len& 0x00FF));

// Read data:On data_len> 1, Burst Read Processing Mode.
for(int idx = 0; idx<data_len; idx++)
{

```



```

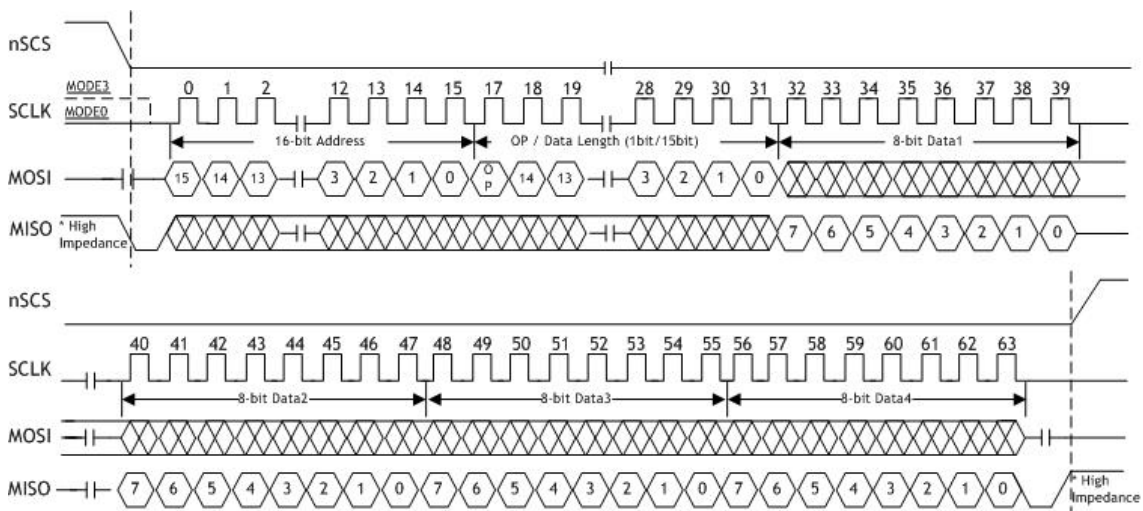
SpiSendData(0); // Dummy data
data_buf[idx] = SpiRecvData(idx); // Read data
}
CSon(); // CS=1, SPI end
ISR_ENABLE(); // Interrupt Service Routine disable
}

```

3.3 Write processing

The WRITE processing is entered by driving nSS low, followed by the Address, the OP code, the Data Length, and the Data byte on MISO.

In W5200 SPI mode, the Byte WRITE processing and the Burst WRITE processing are provided. The Byte WRITE processing takes 4 instructions which consist of the 16-bit Address, the 1-bit OP code(0x1), the 15-bit Data length and 8-bit Data. Otherwise, the Burst WRITE processing only takes the Data instruction after the setting of the Burst WRITE processing. To distinguish between the Byte WRITE and the Burst WRITE processing, the Data length is used. If the Data length is '1,' the Byte WRITE processing is operated. Otherwise, the Burst WRITE Processing is operated when the Data length is more than two. The MOSI pin should be selected by driving MOSI low after the falling edge of the nSS.



< Write Sequence >

```
/* Pseudo Code for Write data of 8bit per packet */
#define data_write_command    0x80
uint16 addr;    // Address : 16bits
int16 data_len;    // Data length :15bits
uint8 data_buf[];    // Array for data

{
SpiSendData();    //Send data from MCU to W5200

ISR_DISABLE(); // Interrupt Service Routine disable
CSoff(); // CS=0, SPI start

SpiSendData(((addr+idx) & 0xFF00) >> 8);    // Address byte 1
SpiSendData((addr+idx) & 0x00FF);    // Address byte 2

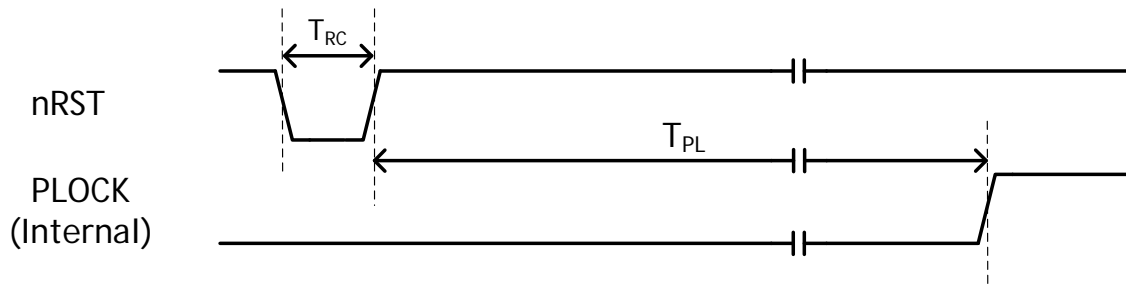
// Data write command + Data length upper 7bits
SpiSendData((data_write_command | ((data_len& 0x7F00) >> 8)));
// Data length bottom 8bits
SpiSendData((data_len& 0x00FF));

// Write data: On data_len> 1, Burst Write Processing Mode.
for(int idx = 0; idx<data_len; idx++)
    SpiSendData(data_buf[idx]);

CSon();    // CS=1, SPI end
IINCHIP_ISR_ENABLE();    // Interrupt Service Routine disable
}
```

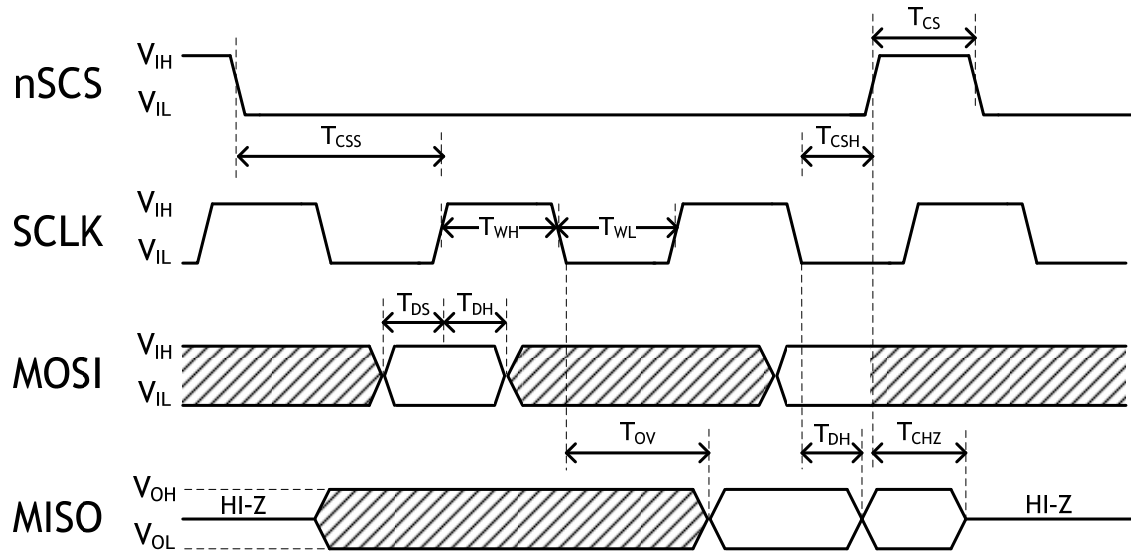
4. Timing diagram

4.1 Reset Timing



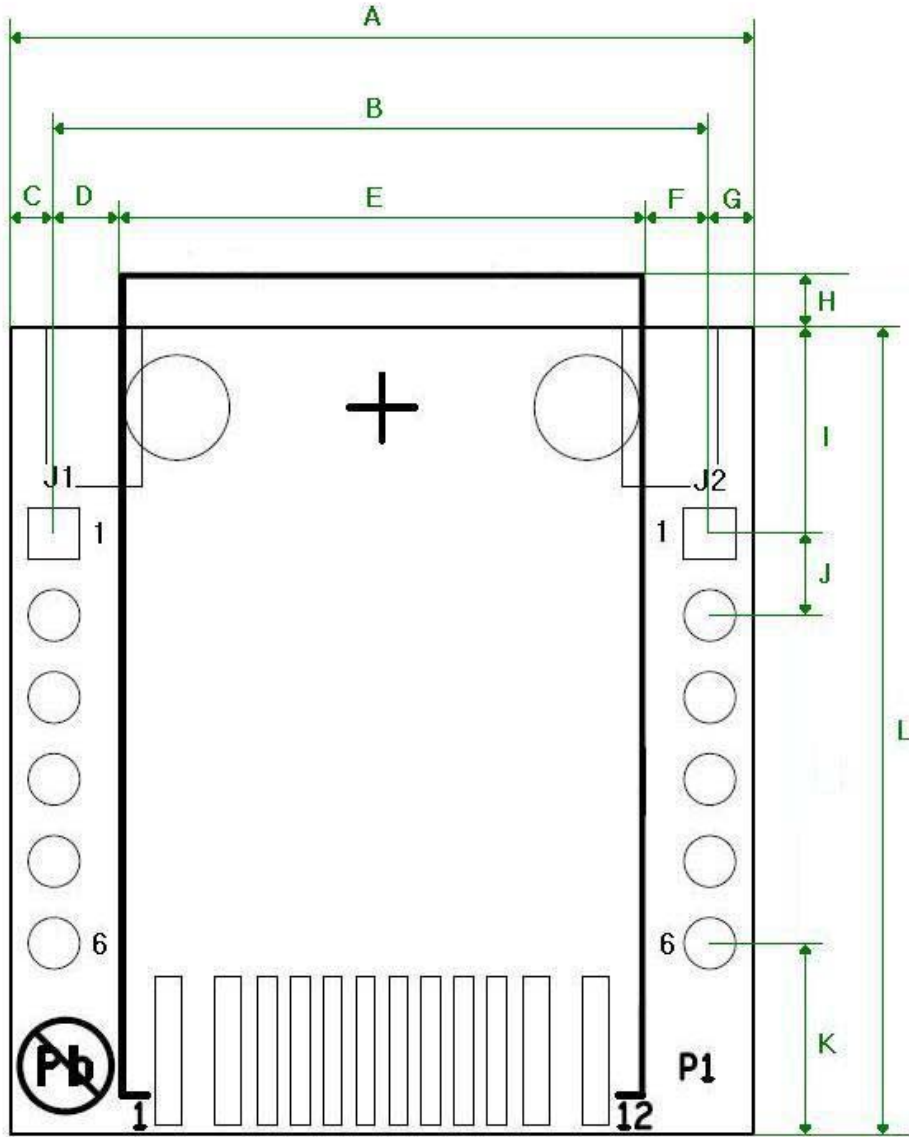
Symbol	Description	Min	Max
TRC	Reset Cycle Time	2 us	-
TPL	nRST internal PLOCK	-	150 ms

4.2 SPI Timing



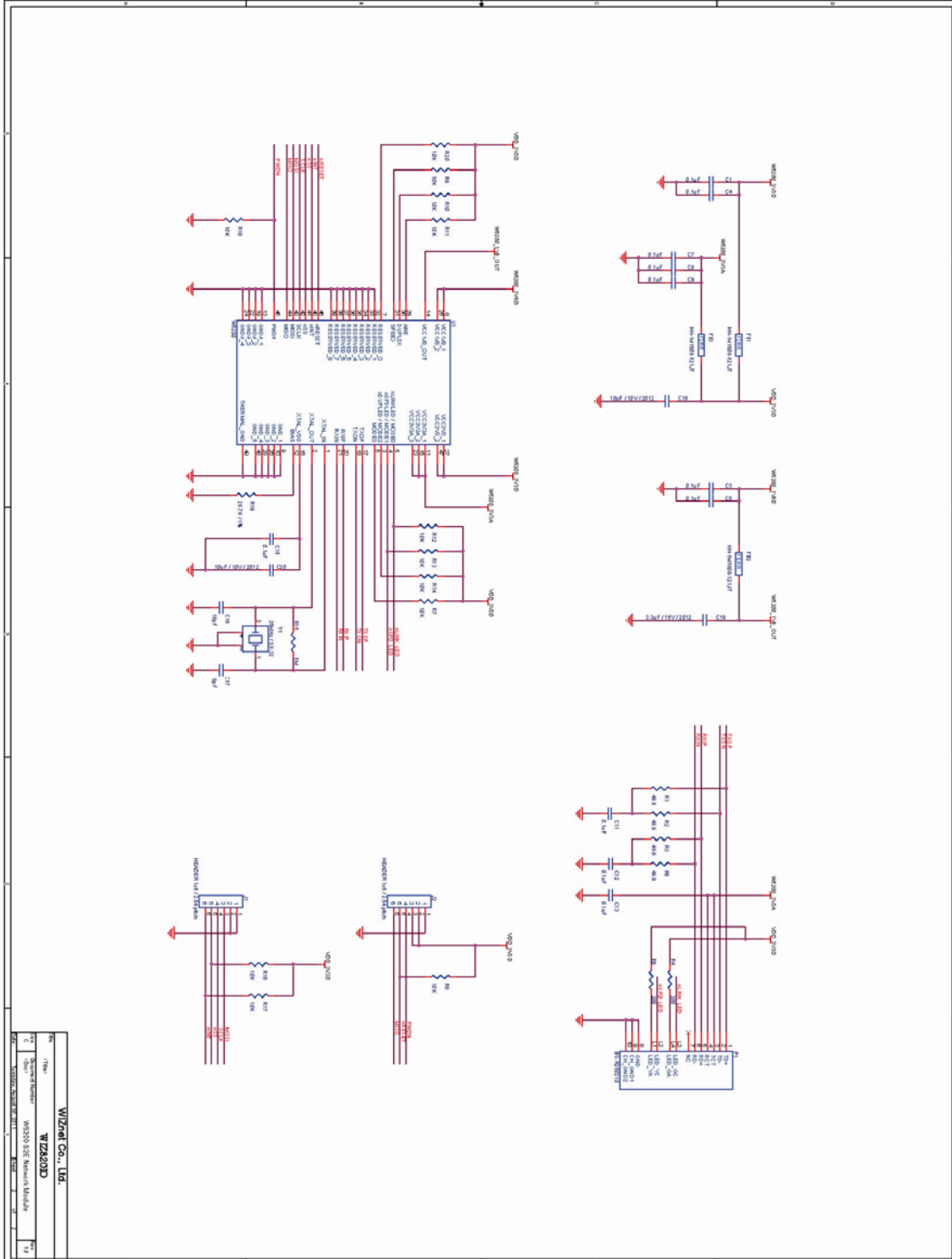
Symbol	Description	Min	Max	Units
F _{SCK}	SCK Clock Frequency		80	MHz
T _{WH}	SCK High Time	6		ns
T _{WL}	SCK Low Time	6		ns
T _{CS}	nSCS High Time	5		ns
T _{CSS}	nSCS Hold Time	5	-	ns
T _{CSH}	nSCS Hold Time	5		ns
T _{DS}	Data In Setup Time	3		ns
T _{DH}	Data In Hold Time	3		ns
T _{OV}	Output Valid Time		5	ns
T _{OH}	Output Hold Time	0		ns
T _{CHZ}	nSCS High to Output Hi-Z		5	ns

5. Dimensions



Symbol	Dimension(mm)	Symbol	Dimension(mm)
A	23.00	G	1.34
B	20.32 (2.54 x 8)	H	2.50 (+/- 0.50)
C	1.34	I	6.40
D	2.11	J	2.54
E	16.10	K	5.80
F	2.11	L	25.00

6. Reference Schematics



7. Warranty

WIZnet Co., Ltd offers the following limited warranties applicable only to the original purchaser. This offer is non-transferable.

WIZnet warrants our products and its parts against defects in materials and workmanship under normal use for period of standard ONE(1) YEAR for the WIZ820io module and labor warranty after the date of original retail purchase. During this period, WIZnet will repair or replace a defective products or part free of charge.

Warranty Conditions:

1. The warranty applies only to products distributed by WIZnet or our official distributors.
2. The warranty applies only to defects in material or workmanship as mentioned above in 3.Warranty. The warranty applies only to defects which occur during normal use and does not extend to damage to products or parts which results from alternation, repair, modification, faulty installation or service by anyone other than someone authorized by WIZnet Co., Ltd. ; damage to products or parts caused by accident, abuse, or misuse, poor maintenance, mishandling, misapplication, or used in violation of instructions furnished by us ; damage occurring in shipment or any damage caused by an act of God, such as lightning or line surge.

Procedure for Obtaining Warranty Service

1. Contact an authorized distributors or dealer of WIZnet Co., Ltd. for obtaining an RMA (Return Merchandise Authorization) request form within the applicable warranty period.
2. Send the products to the distributors or dealers together with the completed RMA request form. All products returned for warranty must be carefully repackaged in the original packing materials.
3. Any service issue, please contact to sales@wiznet.co.kr



Компания «ЭлектроПласт» предлагает заключение долгосрочных отношений при поставках импортных электронных компонентов на взаимовыгодных условиях!

Наши преимущества:

- Оперативные поставки широкого спектра электронных компонентов отечественного и импортного производства напрямую от производителей и с крупнейших мировых складов;
- Поставка более 17-ти миллионов наименований электронных компонентов;
- Поставка сложных, дефицитных, либо снятых с производства позиций;
- Оперативные сроки поставки под заказ (от 5 рабочих дней);
- Экспресс доставка в любую точку России;
- Техническая поддержка проекта, помощь в подборе аналогов, поставка прототипов;
- Система менеджмента качества сертифицирована по Международному стандарту ISO 9001;
- Лицензия ФСБ на осуществление работ с использованием сведений, составляющих государственную тайну;
- Поставка специализированных компонентов (Xilinx, Altera, Analog Devices, Intersil, Interpoint, Microsemi, Aeroflex, Peregrine, Syfer, Eurofarad, Texas Instrument, Miteq, Cobham, E2V, MA-COM, Hittite, Mini-Circuits, General Dynamics и др.);

Помимо этого, одним из направлений компании «ЭлектроПласт» является направление «Источники питания». Мы предлагаем Вам помощь Конструкторского отдела:

- Подбор оптимального решения, техническое обоснование при выборе компонента;
- Подбор аналогов;
- Консультации по применению компонента;
- Поставка образцов и прототипов;
- Техническая поддержка проекта;
- Защита от снятия компонента с производства.



Как с нами связаться

Телефон: 8 (812) 309 58 32 (многоканальный)

Факс: 8 (812) 320-02-42

Электронная почта: org@eplast1.ru

Адрес: 198099, г. Санкт-Петербург, ул. Калинина, дом 2, корпус 4, литера А.