

CUSTOMER DRAWING

Slit Adhesive Sleeve (S-1017)

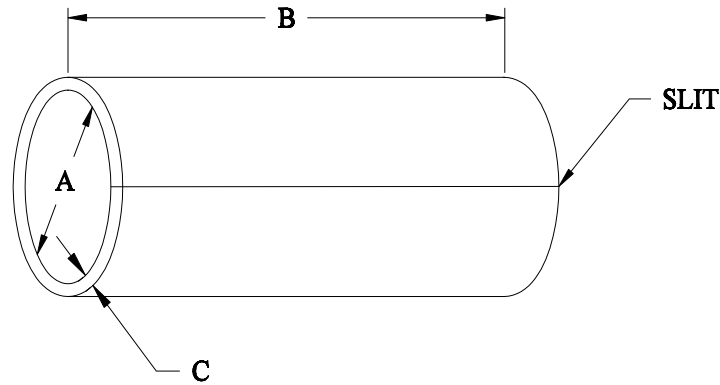


Table 1: Dimensions (inches)

PART DESCRIPTION	EXTRUDED ID (A)	CUT LENGTH (B)	EXTRUDED WALL (C)
SAS-090-038-1017	.090 ± .005	0.38 ± .050	0.024 ± .005
SAS-090-075-1017	.090 ± .005	0.75 ± .050	0.024 ± .005
SAS-090-1-1017	.090 ± .005	1.00 ± .050	0.024 ± .005
SAS-115-075-1017	.115 ± .005	0.75 ± .050	0.032 ± .005
SAS-115-1-1017	.115 ± .005	1.00 ± .050	0.032 ± .005
SAS-160-075-1017	.160 ± .005	0.75 ± .050	0.032 ± .005
SAS-160-1-1017	.160 ± .005	1.00 ± .050	0.032 ± .005
SAS-200-075-1017	.200 ± .005	0.75 ± .050	0.035 ± .005
SAS-200-1-1017	.200 ± .005	1.00 ± .050	0.035 ± .005

Color: Amber

		Tyco Electronics Corp. 300 Constitution Drive, Menlo Park, CA. 94025	Raychem Molded Parts	TITLE: SPLIT ADHESIVE SLEEVE		
Unless otherwise specified, dimensions are in inches. [Metric dimensions are shown in brackets]				DOCUMENT NO.: SAS-XXX-XXX-1017		
TOLERANCES: 0.00 N/A 0.0 N/A 0 N/A	ANGLES: N/A ROUGHNES S IN MICRON	Tyco Electronics reserves the right to amend this drawing at any time. Users should evaluate the suitability of the product for their application.		REVISION: D	DATE: August 14, 2008	
PREPARED BY: UNGUYEN	ECO NUMBER: ECO-08-020204	CAGE CODE : 06090	SCALE: -NA-	SIZE: A	SHEET: 1 of 3	

© 2004 –2008 Tyco Electronics Corporation. All rights reserved.

If this document is printed it becomes uncontrolled. Check for the latest revision.

CUSTOMER DRAWING

Table 2: Properties

Property	Unit	Requirements	Test Method
Physical			
Visual	--	No foreign matter, voids, pinholes.	
Specific Gravity	--	0.95 ± 0.05	ASTM D 792
Softening Point	°C	120 ± 10	ASTM E 28
Low Temperature Impact Brittleness	°C	-20 maximum	ASTM D 746
Adhesive Peel Polyolefin Polychloroprene Polyvinylchloride	lbs/in width	20 minimum 10 minimum 15 minimum	Note 1
Chemical*			
Water Absorption	Percent	1.0 maximum	ASTM D 570
Fungus Resistance	--	Rating of 1 or less	ASTM G 21
Fluid Resistance* Weight Change after 7 days/23 ± 3°C (75 ± 5°F) 3 X 1-inch specimens Detergent Solution (#12) Hydraulic Fluid (MIL-PRF-87257 or MIL-PRF-83282) Lube Oil (MIL-PRF-7808L) ASTM Oil (#49)	Percent	3 maximum 10 maximum 5 maximum 15 maximum	ASTM D 543
Electrical*			
Volume Resistivity	ohm-cm	10 ¹⁰ minimum	ASTM D 257
Dielectric Strength	V/mil	500 minimum	ASTM D 149

*Test specimens shall be prepared in the form of 6 x 6 x .075-inch compression molded slabs. Molding temperature shall be 150 ± 3°C (302 ± 5°F).

Acceptance Tests: Visual, Dimensions, Specific Gravity

DOCUMENT NO.: SAS-XXX-XXX-1017	ECO NUMBER: ECO-08-020204	REV.: D	DATE: August 14, 2008	SHEET: 2 of 3
--	------------------------------	------------	--------------------------	------------------

© 2004 -2008Tyco Electronics Corporation. All rights reserved.

If this document is printed it becomes uncontrolled. Check for the latest revision.

CUSTOMER DRAWING

Note 1: Adhesive Peel Strength

Polyolefin

Shrink a 6-inch length of size 1-1/2 inch tubing RNF-100 Type 2* on a glass-laminated plastic or metal tube, 1 inch in diameter, and approximately 1 foot long, with a Thermofit Model 500B Thermogun* or equivalent. Cool to room temperature, lightly abrade with No. 320 emery cloth, and wipe with MEK. Spiral wrap S-1017+ tape on the recovered tubing, with a 50% overlap. Place a strip of 3/4-inch-wide masking tape lengthwise on the adhesive tape to hold it in place and to provide unbonded ends to insert into the tensile tester.

Abrade and clean the inside surface of three 1-1/2 inch lengths of size 1-1/2 inch RNF-100 Type 2. Place them on the prepared mandrel so that they are about 1/2 inch apart, and shrink with the Thermogun. Place the assembly in an oven for 10 minutes at $150 \pm 3^{\circ}\text{C}$ ($302 \pm 5^{\circ}\text{F}$).

Cool to room temperature, and cut along one edge of the masking tape to remove the bonded assembly from the mandrel. Cut a 1-inch wide specimen from the center of each double thickness. Insert the unbonded ends in a tensile tester operating at 2 inches per minute. Make readings of peel strength at every 1/2 inch of jaw separation after 1 inch initial separation. The average of 5 readings shall define peel strength.

Polychloroprene

Repeat above procedure, except use NTFR* tubing.

Polyvinylchloride

Repeat above procedure, except use Thermofit PVC* tubing.

*Obtainable from Tyco Electronics/Raychem Corporation.
+S-1017 tape is made from the same lot of material as SAS-1017.

Tyco Electronics Corporation/Raychem reserves the right to amend this specification at any time. Users should evaluate the suitability of the product for their application.

DOCUMENT NO.: SAS-XXX-XXX-1017	ECO NUMBER: ECO-08-020204	REV.: D	DATE: August 14, 2008	SHEET: 3 of 3
--	------------------------------	------------	--------------------------	------------------

© 2004 -2008 Tyco Electronics Corporation. All rights reserved.

If this document is printed it becomes uncontrolled. Check for the latest revision.



Компания «ЭлектроПласт» предлагает заключение долгосрочных отношений при поставках импортных электронных компонентов на взаимовыгодных условиях!

Наши преимущества:

- Оперативные поставки широкого спектра электронных компонентов отечественного и импортного производства напрямую от производителей и с крупнейших мировых складов;
- Поставка более 17-ти миллионов наименований электронных компонентов;
- Поставка сложных, дефицитных, либо снятых с производства позиций;
- Оперативные сроки поставки под заказ (от 5 рабочих дней);
- Экспресс доставка в любую точку России;
- Техническая поддержка проекта, помощь в подборе аналогов, поставка прототипов;
- Система менеджмента качества сертифицирована по Международному стандарту ISO 9001;
- Лицензия ФСБ на осуществление работ с использованием сведений, составляющих государственную тайну;
- Поставка специализированных компонентов (Xilinx, Altera, Analog Devices, Intersil, Interpoint, Microsemi, Aeroflex, Peregrine, Syfer, Eurofarad, Texas Instrument, Miteq, Cobham, E2V, MA-COM, Hittite, Mini-Circuits, General Dynamics и др.);

Помимо этого, одним из направлений компании «ЭлектроПласт» является направление «Источники питания». Мы предлагаем Вам помощь Конструкторского отдела:

- Подбор оптимального решения, техническое обоснование при выборе компонента;
- Подбор аналогов;
- Консультации по применению компонента;
- Поставка образцов и прототипов;
- Техническая поддержка проекта;
- Защита от снятия компонента с производства.



Как с нами связаться

Телефон: 8 (812) 309 58 32 (многоканальный)

Факс: 8 (812) 320-02-42

Электронная почта: org@eplast1.ru

Адрес: 198099, г. Санкт-Петербург, ул. Калинина, дом 2, корпус 4, литера А.