



# 8500 Series Subminiature Pushbutton Switches

A

Pushbutton



## Features/Benefits

- Pre-travel or over-travel models available
- Ratings up to 3 AMPS
- Reliable contact design
- RoHS compliant

## Typical Applications

- Detection
- Telecommunications and networking equipment
- Computers and peripherals



Models Available

## Specifications

CONTACT RATING: Q contact material (853X Models): 1 AMP @ 120 V AC or 28 V DC; (855X Models): 3 AMPS @ 120 V AC or 28 V DC. See page A-65 for additional ratings.

### ELECTRICAL LIFE:

853X MODELS: 250,000 actuations at full load.

855X MODELS: 10,000 actuations at full load.

CONTACT RESISTANCE: Below 30 mΩ typ. initial @

2-4 V DC, 100 mA, for both silver and gold plated contacts.

INSULATION RESISTANCE: 10<sup>9</sup>Ω min.

DIELECTRIC STRENGTH: 1,000 Vrms min. @ sea level.

OPERATING TEMPERATURE: -30°C to 65°C.

TORQUE SPECS: T, T1 15/32" bushings - 50 in. lbs max.

All other 1/4 -40 bushing types 12 in. lbs max.

## Materials

CASE: Glass filled phenolic or diallyl phthalate (DAP) (UL 94V-0).

PLUNGER: Phenolic or glass filled polyester, black standard(UL94V-0).

CAP & FRAME: Nylon, black, standard.

BUSHING: Brass, nickel plated.

CONTACTS: Q contact material: Coin silver, silver plated. See page A-65 for additional contact materials.

TERMINALS: Q contact material: Copper alloy, silver plated. See page A-65 for additional contact materials.

TERMINAL SEAL: Epoxy.

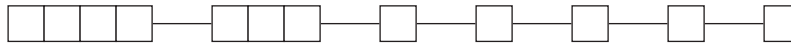
HARDWARE: Nut: Brass, nickel plated; Lockwasher: Steel, bright nickel plated.

**NOTE:** Any models supplied with Q, B or G contact material are RoHS compliant.

**NOTE:** Specifications and materials listed above are for switches with standard options. For information on specific and custom switches, consult Customer Service Center.

## Build-A-Switch

To order, simply select desired option from each category and place in the appropriate box. Available options are shown and described on pages A-63 thru A-66. For additional options not shown in catalog, consult Customer Service Center. All models have epoxy terminal seal and are compatible with all "bottom-wash" PCB cleaning methods.



### Switch Function

- 8531** SPST Off-Mom. 1 Amp
- 8532** SPST Off-Mom. 1 Amp
- 8533** SPST On-Mom. 1 Amp
- 8534** SPST On-Mom. 1 Amp
- 8551** SPST Off-Mom. 3 Amps
- 8552** SPST Off-Mom. 3 Amps

### Actuator or Plunger

- M** .150" high
- J81** Snap-in with frame
- J82** Snap-in with frame for LED
- S** .210" high
- T** 15/32 bushing
- T1** 15/32 bushing with frame (8532 and 8534 only)

### Terminations

- Z** Solder lug
- AV\*** Right angle, PC thru-hole
- C** PC Thru-hole

### Contact Material

- Q** Silver
- B** Gold
- G** Gold over silver

### Seal

- E** Epoxy
- D** No epoxy seal

### Cap or Plunger Color

- 2** Black
- 1** White
- 3** Red
- 9** Gray

### Frame Color

- 2** Black
- NONE** Models without frame

\* Available with M or S plunger models, and B contact material only.



Dimensions are shown: Inches (mm)  
Specifications and dimensions subject to change

# 8500 Series Subminiature Pushbutton Switches



A  
Pushbutton

## SWITCH FUNCTION

| NO. POLES | MODEL NO.   | RATING | SWITCH FUNCTION |        | TOTAL TRAVEL   | ACTUATION FORCE    | SCHEMATIC            |
|-----------|-------------|--------|-----------------|--------|--|--------------------|----------------------|
|           |             |        | POS. 1          | POS. 2 |  |                    |                      |
| SP        | <b>8531</b> | 1 AMP  | OFF             | MOM.   | .095 (2,41) TYP. with overtravel<br>.042 (1,07) TYP. | 7.7 oz (220g) TYP. | N.O. with overtravel |
|           | <b>8551</b> | 3 AMPS |                 |        |  |                    |                      |

### SPST



Part number shown: 8531MZQE2

|    |             |        |     |      |                  |                  |      |
|----|-------------|--------|-----|------|------------------|------------------|------|
| SP | <b>8532</b> | 1 AMP  | OFF | MOM. | .050 (1,27) TYP. | 6 oz (170g) TYP. | N.O. |
|    | <b>8552</b> | 3 AMPS |     |      |                  |                  |      |

### SPST



Part number shown: 8532MZQE2

|    |             |       |    |      |   |                      |                     |
|----|-------------|-------|----|------|---|----------------------|---------------------|
| SP | <b>8533</b> | 1 AMP | ON | MOM. | .080 (2,03) TYP. with pretravel<br>.057 (1,45) TYP. | 11.5 oz (456 g) TYP. | N.C. with pretravel |
|    | <b>8534</b> | 1 AMP |    |      |   |                      |                     |

### SPST



Part number shown: 8533MZQE2

MOM. = Momentary

All models with all options when ordered with G or Q contact material.



Dimensions are shown: Inches (mm)  
Specifications and dimensions subject to change

**C&K**

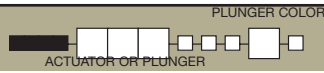


# 8500 Series Subminiature Pushbutton Switches

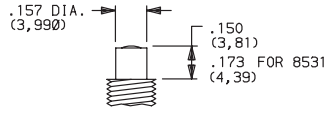
Pushbutton

A

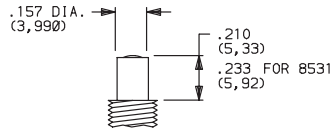
## PLUNGER



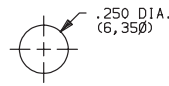
**M** .150" HIGH PLUNGER



**S** .210" HIGH PLUNGER



PANEL MOUNTING



| OPTION CODE | PLUNGER COLOR |
|-------------|---------------|
| <b>2</b>    | BLACK         |
| <b>3</b>    | RED           |

**NOTE:** One mounting nut and lockwasher supplied with all actuators (except T actuator: two nuts supplied).

CAP COLOR

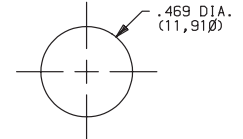
## ACTUATOR



**T** 15/32 BUSHING



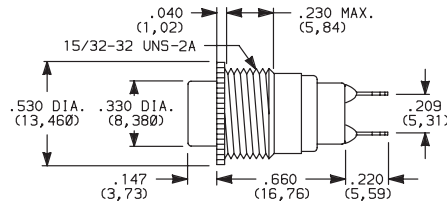
PANEL MOUNTING



| OPTION CODE | CAP COLOR |
|-------------|-----------|
| <b>2</b>    | BLACK     |
| <b>1</b>    | WHITE     |
| <b>3</b>    | RED       |
| <b>9</b>    | GRAY      |

**NOTE:** No frame color choice required.

**T1** 15/32 BUSHING WITH FRAME



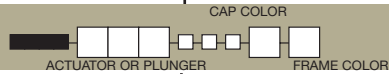
Cap Finish: gloss. Other colors available, consult Customer Service Center.

One mounting nut and lockwasher supplied with all actuators (except T actuator: two nuts supplied).

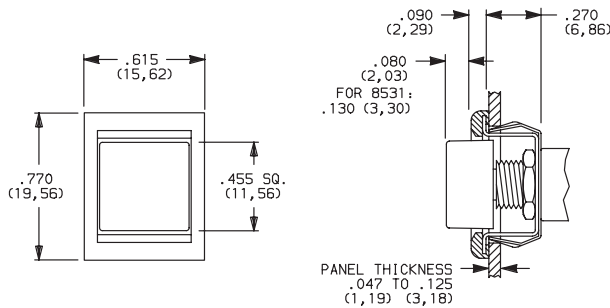
**NOTE:** Caps available for plunger options, see page A-65.

**NOTE:** No frame color choice required. Available with 8532 and 8534 models only.

## ACTUATOR—SNAP-IN FRONT MOUNT



**J81** SNAP-IN WITH FRAME



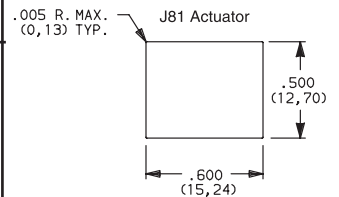
| OPTION CODE | CAP AND FRAME COLOR |
|-------------|---------------------|
| <b>2</b>    | BLACK               |

Cap and Frame Finish: matte. Other colors available, consult Customer Service Center.

One mounting nut and lockwasher supplied with all actuators.

**NOTE:** Caps & frames available separately, see pages A-65 and A-66.

PANEL MOUNTING



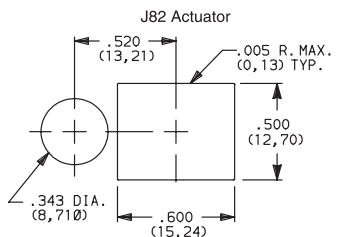
**J82** SNAP-IN WITH FRAME FOR LED



**NOTE:** LED snaps securely into frame. Height depends on LED used.

PANEL THICKNESS .047 TO .125 (1,19) (3,18)

**LED not included.** For LED information, see page A-66.



Dimensions are shown: Inches (mm)  
Specifications and dimensions subject to change



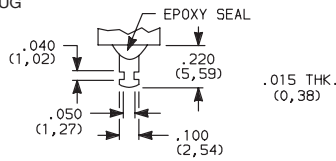
# 8500 Series Subminiature Pushbutton Switches



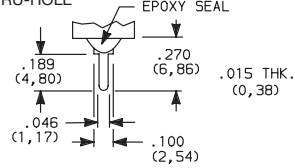
A  
Pushbutton

## TERMINATIONS

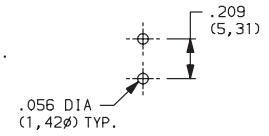
### Z SOLDER LUG



### C PC THRU-HOLE



### PC MOUNTING



### AV RIGHT ANGLE, PC THRU-HOLE



### PC MOUNTING



| MODEL NO.  | DIM "X" |
|------------|---------|
| 8531, 8533 | 0.550   |
| 8532, 8534 | 0.438   |

NOTE: Available with M or S plunger models, and B contact material only.

## CONTACT MATERIAL

| OPTION CODE | RoHS COMPLIANT * | RoHS COMPATIBLE * | TERMINAL PLATING              | CONTACT MATERIAL    | RATINGS                        |  |
|-------------|------------------|-------------------|-------------------------------|---------------------|--------------------------------|--|
| <b>B</b>    | YES              | YES               | GOLD <sup>1</sup>             | GOLD                | LOW LEVEL/DRY CIRCUIT          | 0.4 VA MAX. @ 20 V AC OR DC MAX.   |
| <b>Q</b>    | YES              | YES               | SILVER <sup>4</sup>           | SILVER <sup>5</sup> | POWER                          | 853X MODELS: 1 AMP @ 120 V AC OR 28 V DC.<br>855X MODELS: 3 AMPS @ 120 V AC OR 28 V DC.                                |
| <b>G</b>    | YES              | YES               | GOLD OVER SILVER <sup>2</sup> | GOLD <sup>3</sup>   | LOW LEVEL/DRY CIRCUIT OR POWER | 0.4 V MAX @ 20 V AC OR DC MAX. OR 853X MODELS: 1 AMP @ 120 V AC OR 28 V DC. 855X MODELS: 3 AMPS @ 120 V AC OR 28 V DC. |

\* Note: See Technical Data section of this catalog for RoHS compliant and compatible definitions and specifications.

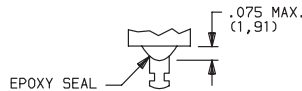
- <sup>1</sup> CONTACTS & TERMINALS: Copper alloy, with gold plate over nickel plate.
- <sup>2</sup> CONTACTS: Coin silver, with gold plate over nickel plate.
- <sup>3</sup> TERMINALS: Copper alloy, with gold plate over nickel plate.
- <sup>4</sup> CONTACTS: Coin silver, silver plated.
- <sup>5</sup> TERMINALS: Copper alloy, silver plated.

NOTE: Any models supplied with Q, B or G contact material are RoHS compliant.

All models with all options when ordered with G or Q contact material.  
Q contact material standard with C, Z terminations.  
8551 & 8552 available with Q contact material only.

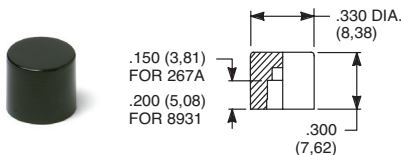
## SEAL

### E EPOXY SEAL



## REPLACEMENT HARDWARE

### Cap for 0.157" dia. plungers

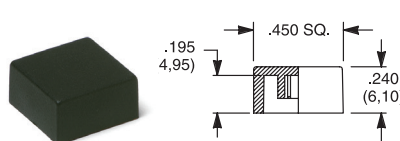


| PART NO.         |       | PART NO.         |       |
|------------------|-------|------------------|-------|
| <b>267A01000</b> | WHITE | <b>893101000</b> | WHITE |
| <b>267A02000</b> | BLACK | <b>893102000</b> | BLACK |
| <b>267A03000</b> | RED   | <b>893103000</b> | RED   |
| <b>267A09000</b> | GRAY  | <b>893109000</b> | GRAY  |

85X2T, 8534T models only  
Material: Nylon  
Finish: Gloss

85X1T, 8532T1, 8533T, 8534T1 models only  
Material: Nylon  
Finish: Gloss

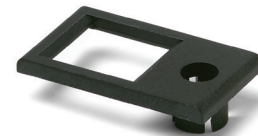
### Cap, J80, J81 & J 82 options only



| PART NO.         |       |
|------------------|-------|
| <b>448901000</b> | WHITE |
| <b>448902000</b> | BLACK |
| <b>448903000</b> | RED   |
| <b>448909000</b> | GRAY  |

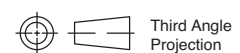
Material: Nylon  
Finish: Gloss or matte  
Other colors available, consult Customer Service Center.

### Frame



| PART NO.         |       |
|------------------|-------|
| <b>613302263</b> | BLACK |

Material: Nylon  
Finish: Matte



Dimensions are shown: Inches (mm)  
Specifications and dimensions subject to change





# 8500 Series Subminiature Pushbutton Switches

## AVAILABLE HARDWARE

Pushbutton  
A

### Frame



#### PART NO.

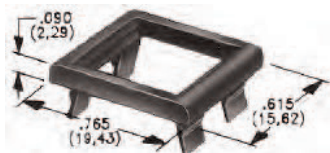
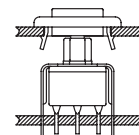
**615602263** BLACK

Material: Nylon  
Finish: Matte

**NOTE:** Additional nuts, locking rings and lockwashers available separately, see section "Technical Data and Additional Hardware".  
Other colors available, consult Customer Service Center.

Frames snap into panel opening and are independent from switch mounting. Accurate positioning of the PC mounted switch relative to the panel opening is necessary to provide proper clearance between actuator and frame. Available in two basic styles and four panel thicknesses .047-.125 in. Material: Nylon. Finish: Matte.

### TYPICAL APPLICATION



.090" (2,29) PANEL THK.    .125" (3,18) PANEL THK.

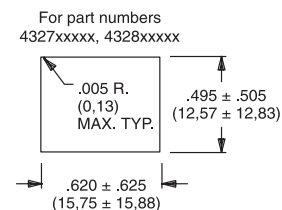
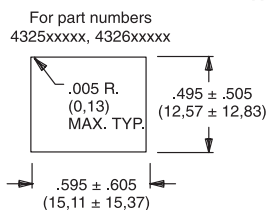
#### PART NO.

**432702263**

#### PART NO.

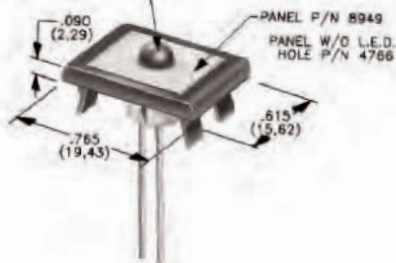
**432802263** BLACK

### PANEL MOUNTING



### Panel Inserts

L.E.D. (.200 DIA. (5,08)) SNAPS  
SECURELY INTO INSERT (P/N 8949).  
HEIGHT DEPENDS ON L.E.D. USED.



Above frames (part nos. 432XXXXXX) are also available with insert which accepts LED for indicator light assembly. Order insert separately from frame. Blank insert panel (without hole for LED) also available. **LED not included.**

PANEL INSERT  
WITH HOLE FOR LED

**PART NO.**  
**894902000**

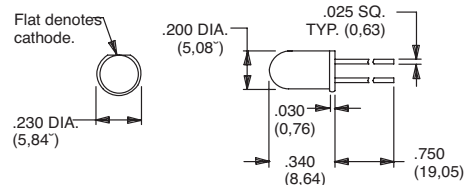
BLANK PANEL INSERT  
WITHOUT HOLE FOR LED

**PART NO.**  
**476602000** BLACK

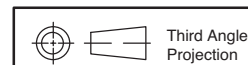
Special colors, custom markings available, consult Customer Service Center.

### LED INFORMATION

**Process Information:** Soldering to LED leads must be completed within 5 seconds at 500°F (260°C) maximum.  
LEDs are not supplied with J82 option. LED snaps into switch frame surrounding actuator and is wired externally.



Suggested LED for J82 option.  
Dimensions for reference only.



Dimensions are shown: Inches (mm)  
Specifications and dimensions subject to change





Компания «ЭлектроПласт» предлагает заключение долгосрочных отношений при поставках импортных электронных компонентов на взаимовыгодных условиях!

Наши преимущества:

- Оперативные поставки широкого спектра электронных компонентов отечественного и импортного производства напрямую от производителей и с крупнейших мировых складов;
- Поставка более 17-ти миллионов наименований электронных компонентов;
- Поставка сложных, дефицитных, либо снятых с производства позиций;
- Оперативные сроки поставки под заказ (от 5 рабочих дней);
- Экспресс доставка в любую точку России;
- Техническая поддержка проекта, помощь в подборе аналогов, поставка прототипов;
- Система менеджмента качества сертифицирована по Международному стандарту ISO 9001;
- Лицензия ФСБ на осуществление работ с использованием сведений, составляющих государственную тайну;
- Поставка специализированных компонентов (Xilinx, Altera, Analog Devices, Intersil, Interpoint, Microsemi, Aeroflex, Peregrine, Syfer, Eurofarad, Texas Instrument, Miteq, Cobham, E2V, MA-COM, Hittite, Mini-Circuits, General Dynamics и др.);

Помимо этого, одним из направлений компании «ЭлектроПласт» является направление «Источники питания». Мы предлагаем Вам помощь Конструкторского отдела:

- Подбор оптимального решения, техническое обоснование при выборе компонента;
- Подбор аналогов;
- Консультации по применению компонента;
- Поставка образцов и прототипов;
- Техническая поддержка проекта;
- Защита от снятия компонента с производства.



#### Как с нами связаться

**Телефон:** 8 (812) 309 58 32 (многоканальный)

**Факс:** 8 (812) 320-02-42

**Электронная почта:** [org@eplast1.ru](mailto:org@eplast1.ru)

**Адрес:** 198099, г. Санкт-Петербург, ул. Калинина, дом 2, корпус 4, литера А.