



8500 Series Subminiature Pushbutton Switches

Pushbutton
A



Features/Benefits

- Pre-travel or over-travel models available
- Ratings up to 3 AMPS
- Reliable contact design
- RoHS compliant

Typical Applications

- Detection
- Telecommunications and networking equipment
- Computers and peripherals



Models Available

Specifications

CONTACT RATING: Q contact material (853X Models): 1 AMP @ 120 V AC or 28 V DC; (855X Models): 3 AMPS @ 120 V AC or 28 V DC. See page A-65 for additional ratings.

ELECTRICAL LIFE:

853X MODELS: 250,000 actuations at full load.
855X MODELS: 10,000 actuations at full load.

CONTACT RESISTANCE: Below 30 mΩ typ. initial @ 2-4 V DC, 100 mA, for both silver and gold plated contacts.

INSULATION RESISTANCE: 10⁹Ω min.

DIELECTRIC STRENGTH: 1,000 Vrms min. @ sea level.

OPERATING TEMPERATURE: -30°C to 65°C.

TORQUE SPECS: T, T1 15/32" bushings - 50 in. lbs max.
All other 1/4 -40 bushing types 12 in. lbs max.

Materials

CASE: Glass filled phenolic or diallyl phthalate (DAP) (UL 94V-0).

PLUNGER: Phenolic or glass filled polyester, black standard(UL94V-0).

CAP & FRAME: Nylon, black, standard.

BUSHING: Brass, nickel plated.

CONTACTS: Q contact material: Coin silver, silver plated. See page A-65 for additional contact materials.

TERMINALS: Q contact material: Copper alloy, silver plated. See page A-65 for additional contact materials.

TERMINAL SEAL: Epoxy.

HARDWARE: Nut: Brass, nickel plated; Lockwasher: Steel, bright nickel plated.

NOTE: Any models supplied with Q, B or G contact material are RoHS compliant.

NOTE: Specifications and materials listed above are for switches with standard options. For information on specific and custom switches, consult Customer Service Center.

Build-A-Switch

To order, simply select desired option from each category and place in the appropriate box. Available options are shown and described on pages A-63 thru A-66. For additional options not shown in catalog, consult Customer Service Center. All models have epoxy terminal seal and are compatible with all "bottom-wash" PCB cleaning methods.



Switch Function

- 8531** SPST Off-Mom. 1 Amp
- 8532** SPST Off-Mom. 1 Amp
- 8533** SPST On-Mom. 1 Amp
- 8534** SPST On-Mom. 1 Amp
- 8551** SPST Off-Mom. 3 Amps
- 8552** SPST Off-Mom. 3 Amps

Actuator or Plunger

- M** .150" high
- J81** Snap-in with frame
- J82** Snap-in with frame for LED
- S** .210" high
- T** 15/32 bushing
- T1** 15/32 bushing with frame (8532 and 8534 only)

Terminations

- Z** Solder lug
- AV*** Right angle, PC thru-hole
- C** PC Thru-hole

Contact Material

- Q** Silver
- B** Gold
- G** Gold over silver

Seal

- E** Epoxy
- D** No epoxy seal

Cap or Plunger Color

- 2** Black
- 1** White
- 3** Red
- 9** Gray

Frame Color

- 2** Black
- NONE** Models without frame

* Available with M or S plunger models, and B contact material only.



Dimensions are shown: Inches (mm)
Specifications and dimensions subject to change

8500 Series Subminiature Pushbutton Switches



A
Pushbutton

SWITCH FUNCTION

NO. POLES	MODEL NO.	RATING	SWITCH FUNCTION		TOTAL TRAVEL	ACTUATION FORCE	SCHEMATIC
			POS. 1	POS. 2			
SP	8531	1 AMP	OFF	MOM.	.095 (2,41) TYP. with overtravel .042 (1,07) TYP.	7.7 oz (220g) TYP.	N.O. with overtravel
	8551	3 AMPS					

SPST



Part number shown: 8531MZQE2

SP	8532	1 AMP	OFF	MOM.	.050 (1,27) TYP.	6 oz (170g) TYP.	N.O.
	8552	3 AMPS					

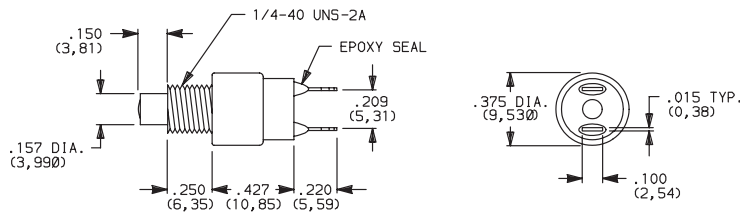
SPST



Part number shown: 8532MZQE2

SP	8533	1 AMP	ON	MOM.	.080 (2,03) TYP. with pretravel .057 (1,45) TYP.	11.5 oz (456 g) TYP.	N.C. with pretravel
	8534	1 AMP	ON	MOM.			

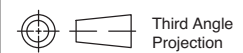
SPST



Part number shown: 8533MZQE2

MOM. = Momentary

All models with all options when ordered with G or Q contact material.



Dimensions are shown: Inches (mm)
Specifications and dimensions subject to change

C&K



8500 Series Subminiature Pushbutton Switches

Pushbutton

A

PLUNGER



M .150" HIGH PLUNGER



S .210" HIGH PLUNGER



PANEL MOUNTING

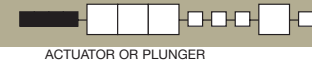


OPTION CODE	PLUNGER COLOR
2	BLACK
3	RED

NOTE: One mounting nut and lockwasher supplied with all actuators (except T actuator: two nuts supplied).

CAP COLOR

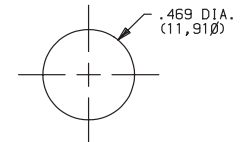
ACTUATOR



T 15/32 BUSHING



PANEL MOUNTING



OPTION CODE	CAP COLOR
2	BLACK
1	WHITE
3	RED
9	GRAY

NOTE: No frame color choice required.

T1 15/32 BUSHING WITH FRAME



Cap Finish: gloss. Other colors available, consult Customer Service Center.

One mounting nut and lockwasher supplied with all actuators (except T actuator: two nuts supplied).

NOTE: Caps available for plunger options, see page A-65.

NOTE: No frame color choice required. Available with 8532 and 8534 models only.

ACTUATOR—SNAP-IN FRONT MOUNT



J81 SNAP-IN WITH FRAME



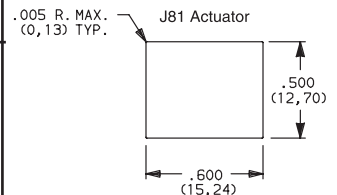
OPTION CODE	CAP AND FRAME COLOR
2	BLACK

Cap and Frame Finish: matte. Other colors available, consult Customer Service Center.

One mounting nut and lockwasher supplied with all actuators.

NOTE: Caps & frames available separately, see pages A-65 and A-66.

PANEL MOUNTING

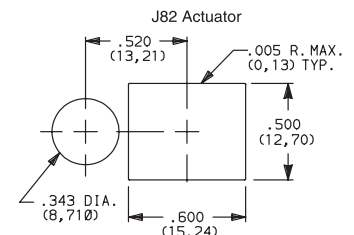


J82 SNAP-IN WITH FRAME FOR LED



NOTE: LED snaps securely into frame. Height depends on LED used.

LED not included. For LED information, see page A-66.



Dimensions are shown: Inches (mm)
Specifications and dimensions subject to change



8500 Series Subminiature Pushbutton Switches



A
Pushbutton

TERMINATIONS

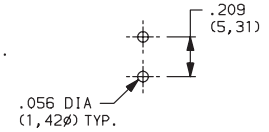
Z SOLDER LUG



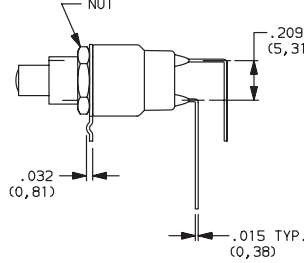
C PC THRU-HOLE



PC MOUNTING



AV RIGHT ANGLE, PC THRU-HOLE



PC MOUNTING



Available with

MODEL NO.	DIM "X"
8531, 8533	0.550
8532, 8534	0.438

NOTE: Available with M or S plunger models, and B contact material only.

CONTACT MATERIAL

OPTION CODE	RoHS COMPLIANT *	RoHS COMPATIBLE *	TERMINAL PLATING	CONTACT MATERIAL	RATINGS	
B	YES	YES	GOLD ¹	GOLD	LOW LEVEL/DRY CIRCUIT	0.4 VA MAX. @ 20 V AC OR DC MAX.
Q	YES	YES	SILVER ⁴	SILVER ⁵	POWER	853X MODELS: 1 AMP @ 120 V AC OR 28 V DC. 855X MODELS: 3 AMPS @ 120 V AC OR 28 V DC.
G	YES	YES	GOLD OVER SILVER ²	GOLD ³	LOW LEVEL/DRY CIRCUIT OR POWER	0.4 V MAX @ 20 V AC OR DC MAX. OR 853X MODELS: 1 AMP @ 120 V AC OR 28 V DC. 855X MODELS: 3 AMPS @ 120 V AC OR 28 V DC.

* Note: See Technical Data section of this catalog for RoHS compliant and compatible definitions and specifications.

- ¹ CONTACTS & TERMINALS: Copper alloy, with gold plate over nickel plate.
- ² CONTACTS: Coin silver, with gold plate over nickel plate.
- ³ TERMINALS: Copper alloy, with gold plate over nickel plate.
- ⁴ CONTACTS: Coin silver, silver plated.
- ⁵ TERMINALS: Copper alloy, silver plated.

NOTE: Any models supplied with Q, B or G contact material are RoHS compliant.

All models with all options when ordered with G or Q contact material.
Q contact material standard with C, Z terminations.
8551 & 8552 available with Q contact material only.

SEAL

E EPOXY SEAL



REPLACEMENT HARDWARE

Cap for 0.157" dia. plungers



PART NO.		PART NO.	
267A01000	WHITE	893101000	WHITE
267A02000	BLACK	893102000	BLACK
267A03000	RED	893103000	RED
267A09000	GRAY	893109000	GRAY

85X2T, 8534T models only
Material: Nylon
Finish: Gloss

85X1T, 8532T1, 8533T, 8534T1 models only
Material: Nylon
Finish: Gloss

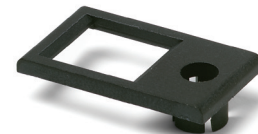
Cap, J80, J81 & J 82 options only



PART NO.	
448901000	WHITE
448902000	BLACK
448903000	RED
448909000	GRAY

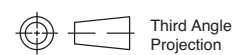
Material: Nylon
Finish: Gloss or matte
Other colors available, consult Customer Service Center.

Frame



PART NO.	
613302263	BLACK

Material: Nylon
Finish: Matte



Dimensions are shown: Inches (mm)
Specifications and dimensions subject to change





8500 Series Subminiature Pushbutton Switches

AVAILABLE HARDWARE

Frame



PART NO.
615602263 BLACK
Material: Nylon
Finish: Matte

NOTE: Additional nuts, locking rings and lockwashers available separately, see section "Technical Data and Additional Hardware".
Other colors available, consult Customer Service Center.

Frames snap into panel opening and are independent from switch mounting. Accurate positioning of the PC mounted switch relative to the panel opening is necessary to provide proper clearance between actuator and frame. Available in two basic styles and four panel thicknesses .047-.125 in. Material: Nylon. Finish: Matte.

TYPICAL APPLICATION

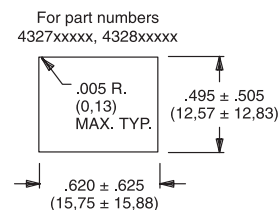
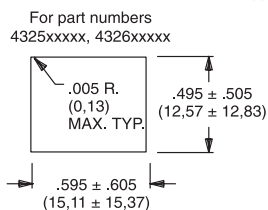


.090" (2,29) PANEL THK. .125" (3,18) PANEL THK.

PART NO.
432702263

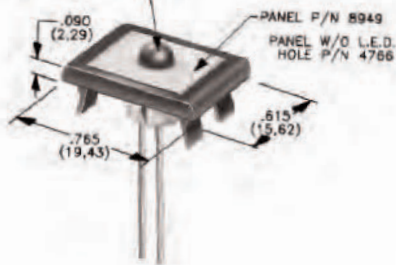
PART NO.
432802263 BLACK

PANEL MOUNTING



Panel Inserts

L.E.D. (.200 DIA. (5,08)) SNAPS
SECURELY INTO INSERT (P/N 8949).
HEIGHT DEPENDS ON L.E.D. USED.



Above frames (part nos. 432XXXXXX) are also available with insert which accepts LED for indicator light assembly. Order insert separately from frame. Blank insert panel (without hole for LED) also available. **LED not included.**

PANEL INSERT
WITH HOLE FOR LED

PART NO.
894902000

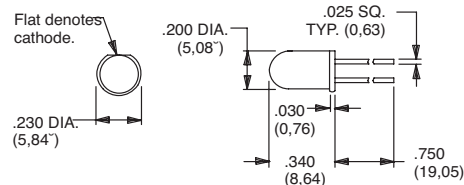
BLANK PANEL INSERT
WITHOUT HOLE FOR LED

PART NO.
476602000 BLACK

Special colors, custom markings available, consult Customer Service Center.

LED INFORMATION

Process Information: Soldering to LED leads must be completed within 5 seconds at 500°F (260°C) maximum.
LEDs are not supplied with J82 option. LED snaps into switch frame surrounding actuator and is wired externally.



Suggested LED for J82 option.
Dimensions for reference only.



Third Angle
Projection

Dimensions are shown: Inches (mm)
Specifications and dimensions subject to change



Компания «ЭлектроПласт» предлагает заключение долгосрочных отношений при поставках импортных электронных компонентов на взаимовыгодных условиях!

Наши преимущества:

- Оперативные поставки широкого спектра электронных компонентов отечественного и импортного производства напрямую от производителей и с крупнейших мировых складов;
- Поставка более 17-ти миллионов наименований электронных компонентов;
- Поставка сложных, дефицитных, либо снятых с производства позиций;
- Оперативные сроки поставки под заказ (от 5 рабочих дней);
- Экспресс доставка в любую точку России;
- Техническая поддержка проекта, помощь в подборе аналогов, поставка прототипов;
- Система менеджмента качества сертифицирована по Международному стандарту ISO 9001;
- Лицензия ФСБ на осуществление работ с использованием сведений, составляющих государственную тайну;
- Поставка специализированных компонентов (Xilinx, Altera, Analog Devices, Intersil, Interpoint, Microsemi, Aeroflex, Peregrine, Syfer, Eurofarad, Texas Instrument, Miteq, Cobham, E2V, MA-COM, Hittite, Mini-Circuits, General Dynamics и др.);

Помимо этого, одним из направлений компании «ЭлектроПласт» является направление «Источники питания». Мы предлагаем Вам помощь Конструкторского отдела:

- Подбор оптимального решения, техническое обоснование при выборе компонента;
- Подбор аналогов;
- Консультации по применению компонента;
- Поставка образцов и прототипов;
- Техническая поддержка проекта;
- Защита от снятия компонента с производства.



Как с нами связаться

Телефон: 8 (812) 309 58 32 (многоканальный)

Факс: 8 (812) 320-02-42

Электронная почта: org@eplast1.ru

Адрес: 198099, г. Санкт-Петербург, ул. Калинина, дом 2, корпус 4, литера А.