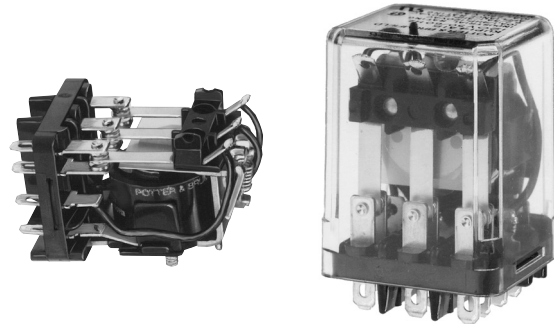


KUMP Series Panel Plug-in Relay

- 15 amp rating
- Contact arrangements 1-3 Form A, 1-3 Form B, 1-3 Form C, 1 Form X, 1 Form Y, 1 Form Z
- Open or enclosed
- Plain or bracket mount dust covers
- Optional indicator lamp and push-to-test button
- Several termination and mounting styles

Typical applications
Hospital beds, semiconductor wafer equipment, boom/bucket lifts



Approvals

UL E22575; CSA LR15734
Technical data of approved types on request

Contact Data

| | | |
|-------------------------------|---|---------------|
| Contact arrangement | 1, 2 and 3 Form A (NO); 1, 2 and 3 Form B (NC); 1, 2 and 3 Form C (CO); 1 Form X (NO-DM); 1 Form Y (NC-DB); 1 Form Z (CO-DB-DM) | |
| Rated voltage | 277VAC | |
| Rated current | 15A | |
| Contact material | AgCdO | AgSnInO |
| Min. recommended contact load | 300mA, 12VDC | 300mA, 12VDC |
| Frequency of operation | 360 ops./hour | 360 ops./hour |
| Operate/releases time max. | 15/10ms | |
| Bounce time max. | 17ms | |

Contact ratings

| Type | Load | Cycles |
|----------------------|-----------------------|-------------------------|
| UL 508 AgCdO | 15A, 277VAC | |
| | 1/2HP, 120VAC | |
| | 10A, 240VAC | |
| | 10A, 32VDC | |
| | 5FLA, 15LRA, 250VAC | |
| | 5A, 120VAC, tungsten | |
| | 0.5A, 250VAC | |
| | 0.5A, 125VDC | |
| | 10FLA, 40LRA, 125VAC | |
| | 3A, 600VAC | |
| AgSnInO | 1/2HP, 480VAC | |
| | 1/2HP, 600VAC | |
| | 1HP, 480VAC, 3 phase | |
| | 15A, 277VAC, pf = 0.8 | 15x10 ³ |
| | 10A, 277VAC, pf = 0.8 | 100x10 ³ |
| Mechanical endurance | | 10x10 ⁶ ops. |

Coil Data

| | |
|-------------------------------------|----------------------------|
| Coil voltage range | 5 to 110VDC 6 to 240VAC |
| Coil insulation system according UL | Class B |

Coil versions, DC coil

| Coil code | Rated voltage VDC | Operate voltage VDC | Coil resistance Ω±10% | Rated coil power W |
|-----------|-------------------|---------------------|-----------------------|--------------------|
| 5 | 5 | 3.75 | 21 | 1.2 |
| 6 | 6 | 4.5 | 32.1 | 1.125 |
| 12 | 12 | 9.0 | 120 | 1.2 |
| 24 | 24 | 18.0 | 472 | 1.25 |
| 48 | 48 | 36.0 | 1800 | 1.3 |
| 110 | 110 | 82.5 | 10000 | 1.25 |

All figures are given for coil without preenergization, at ambient temperature +23°C.

Coil versions, AC coil

| Coil code | Rated voltage VAC | Operate voltage VAC | Coil resistance Ω±15% | Rated coil power VA |
|-----------|-------------------|---------------------|-----------------------|---------------------|
| 6 | 6 | 5.1 | 4.2 | 2.8 |
| 12 | 12 | 10.2 | 18 | 2.8 |
| 24 | 24 | 20.4 | 72 | 2.8 |
| 120 | 120 | 102.0 | 1700 | 2.9 |
| 240 | 240 | 204.0 | 7200 | 2.9 |

All figures are given for coil without preenergization, at ambient temperature +23°C.

Insulation Data

| | |
|-------------------------------|----------------------|
| Initial dielectric strength | |
| between open contacts | 1200V _{rms} |
| between contact and coil | 2200V _{rms} |
| between adjacent contacts | 2200V _{rms} |
| Initial insulation resistance | |
| between insulated elements | 100MΩ, 500VDC |

Other Data

Material compliance: EU RoHS/ELV, China RoHS, REACH, Halogen content refer to the Product Compliance Support Center at www.te.com/customer-support/rohssupportcenter

| | |
|--------------------------------------|--|
| Ambient temperature | |
| DC coil | Enclosed relays: -45°C to 70°C Open relays: 15°C higher maximum |
| AC coil | Enclosed relays, 3 pole: -45°C to +45°C Enclosed relays, 1 and 2 pole: -45°C to +55°C Open relays: 15°C higher maximum |
| Category of environmental protection | IEC 61810 RT0 - open relay; RT1 - dust protected |
| Terminal type | Quick connects (QC), .187, .205 or .250: PCB-THT |
| Terminal retention, push force | QC .205 17 lbs for 3s QC .187, QC .250, PCB 25 lbs for 3s |
| Weight | 85g |
| Packaging/unit | tray/25 pcs., box/150pcs. |

Accessories

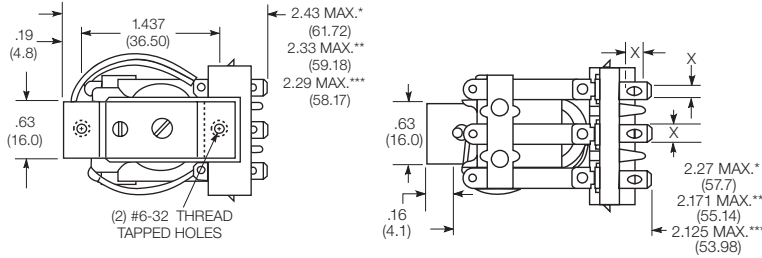
For details see datasheet Sockets and Accessories, KUP Relays

| Product Code | Description |
|--------------|--|
| 27E893 | DIN socket (use 20C318 clip) |
| 27E121 | Track mount socket (use 20C314 clips) |
| 27E043 | Chassis mount/solder eyelet socket (use 20C254 clip) |
| 27E046 | Chassis mount/PCB socket (use 20C254 clip) |
| 27E067 | Chassis mount/quick connect socket (use 20C254 clip) |
| 27E396 | Snap-in/quick connect socket (use 20C254 clip) |

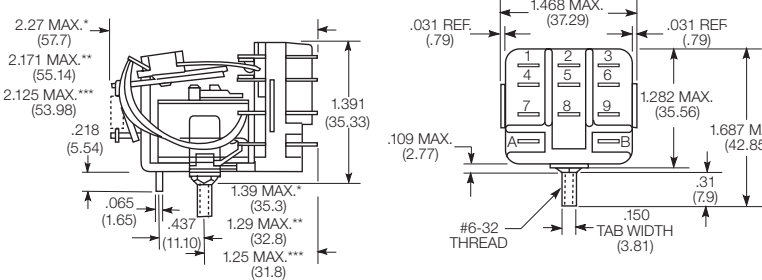
KUMP Series Panel Plug-in Relay (Continued)

Dimensions

KUM bracket type



KUM stud type

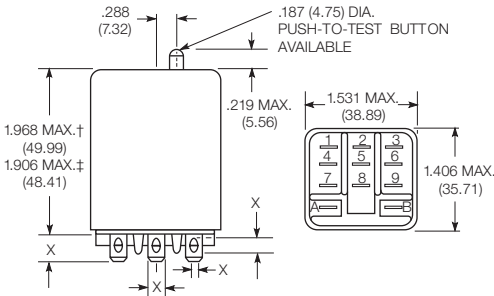


Seated Heights For KUM (open) Relays

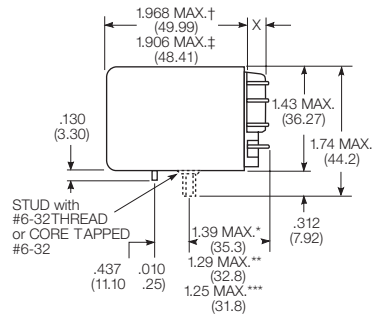
- 1.391" (35.33mm) for #6-32 stud with .218" (5.54mm) locating tab.
 - 1.52" (38.6mm) for bracket with 2-#6 32 tapped holes.
 - 1.282" (32.56mm) for #6-32 tapped core with .125" (3.18mm) or .218" (5.54mm) locating tab.
 - 2.046" (51.97mm) for relay with printed circuit terminals.
- STUD TYPE also available with .125" (3.18mm) tab, as well as without stud and locating tab. Models without stud have core tapped #6-32 THREAD, .25" (6.4mm) minimum depth.

*Dimensions with .250" (6.35mm) terminals.
** Dimensions with .110" (2.79mm) or .205" (5.21mm) terminals.
*** Dimensions with .187" (4.75mm) terminals.

KUMP plain case

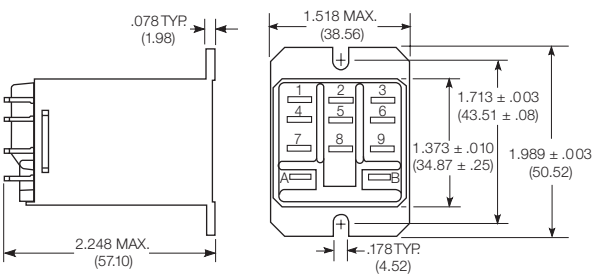


KUMP core / stud mount case



X Is For Terminal Dimensions.
See Terminal Drawings.

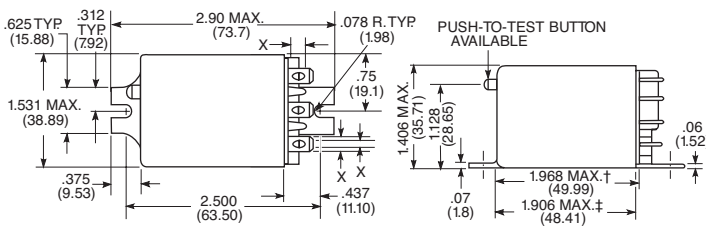
KUMP top flange case



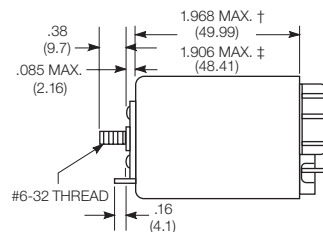
† Dimensions with .250" (6.35mm) terminals.
‡ Dimensions with .187" (4.75mm) and .205" (5.21mm) terminals.

*Dimensions with .250" (6.35mm) terminals.
** Dimensions with .110" (2.79mm) or .205" (5.21mm) terminals.
*** Dimensions with .187" (4.75mm) terminals.

KUMP bracket mount case



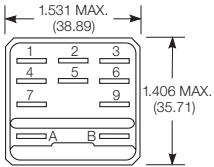
KUMP stud on end case



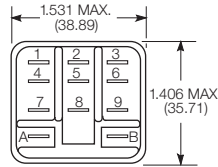
KUMP Series Panel Plug-in Relay (Continued)

Relay front diagrams

Models with 6.35mm (.250) QC terminals

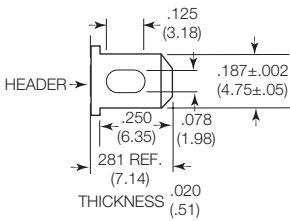


Models with all other terminals

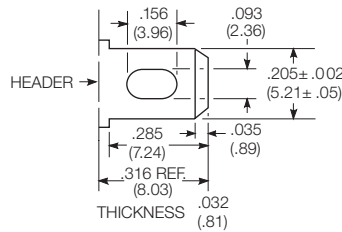


Terminal dimensions

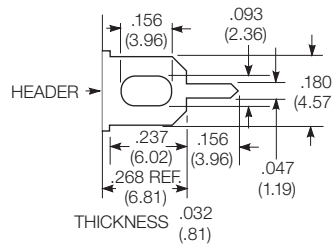
4.75mm (.187) quick connect



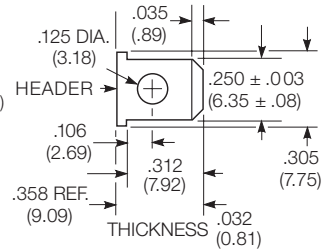
5.21mm (.205) quick connect



1.19mm (.047) printed circuit

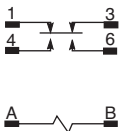


6.35mm (.250) quick connect

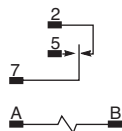


Terminal assignment

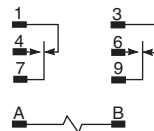
1 Form Z
1 Form X (delete 1 & 3)
1 Form Y (delete 4 & 6)



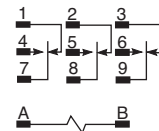
1 Form C
1 Form A (delete 2)
1 Form B (delete 5)



2 Form C
2 Form A (delete 1 & 3)
2 Form B (delete 4 & 6)



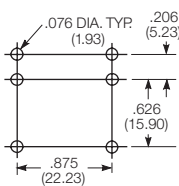
3 Form C
3 Form A (delete 1, 2 & 3)
3 Form B (delete 4, 5 & 6)



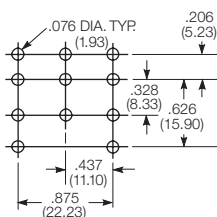
PCB layout

Bottom view on solder pins

1 form Z version
(Omit unnecessary holes for form X and Y types)



3 pole version
(Omit unnecessary holes for form A and 2 pole types)



KUMP Series Panel Plug-in Relay (Continued)

| | | | | | | |
|---|--|----------------------|-----------------|-----------|--|----------|
| Product code structure | | Typical product code | | | | |
| | | KUMP | -11 | A | 1 | 5 |
| Type | | | | | | |
| KUM 15A open style relay | | | | | | |
| KUMP 15A enclosed relay | | | | | | |
| Contact arrangement | | | | | | |
| 1 | 1 form A (1 NO) | 2 | 1 form B (1 NC) | 3 | 1 form X (1 NO-DM) | |
| 4 | 1 form Y (1 NC-DB) | 5 | 1 form C (1 CO) | 6 | 1 form Z (1 CO-DB-DM) | |
| 7 | 2 form A (2 NO) | 8 | 2 form B (2 NC) | 11 | 2 form C (2 CO) | |
| 12 | 3 form A (3 NO) | 13 | 3 form B (3 NC) | 14 | 3 form C (3 CO) | |
| Coil Input | | | | | | |
| A | AC, 50/60Hz | D | DC | | | |
| Mounting and options | | | | | | |
| KUM | | | | | | |
| 1 | #6-32 mounting stud, 5.54mm (.218in) locating tab | | | 2 | 2-hole bracket, #6-32 tapped | |
| 3 | #6-32 tapped core, 3.18mm (.125in) locating tab | | | 4 | #6-32 tapped core, 5.54mm (.218in) locating tab | |
| 5 | #6-32 tapped core, no locating tab | | | | | |
| KUMP | | | | | | |
| 1 | Socket mount (plain) case | | | | | |
| 2 | Socket mount (plain) case with push-to-test button | | | | | |
| 3 | Socket mount (plain) case with indicator lamp ¹⁾ | | | | | |
| 4 | Socket mount (plain) case with indicator lamp and push-to-test button ¹⁾ | | | | | |
| 5 | Bracket mount case | | | | | |
| 6 | Bracket mount case with push-to-test button | | | | | |
| 7 | Bracket mount case with indicator lamp ¹⁾ | | | | | |
| 8 | Bracket mount case with indicator lamp and push-to-test button ¹⁾ | | | | | |
| 9 | Plain case with #6-32 stud and locating tab on end of case | | | | | |
| A | Plain case with #6-32 stud and locating tab | | | | | |
| B | Plain case with #6-32 stud and locating tab, push-to-test button | | | | | |
| C | Plain case with #6-32 stud and locating tab, indicator lamp ¹⁾ | | | | | |
| D | Plain case with #6-32 stud and locating tab, push-to-test button and indicator lamp ¹⁾ | | | | | |
| E | Plain case with #6-32 tapped core and locating tab | | | | | |
| F | Plain case with #6-32 tapped core and locating tab, push-to-test button | | | | | |
| G | Plain case with #6-32 tapped core and locating tab, indicator lamp ¹⁾ | | | | | |
| H | Plain case with #6-32 tapped core and locating tab, push-to-test button and indicator lamp ¹⁾ | | | | | |
| T | Top flange case | | | | | |
| 1) Indicator lamps are available on models with the following coils: 6-24VAC and VDC, 110VDC and 120-240VAC. Only models with 120-240VAC coils are UL recognized. | | | | | | |
| Terminal and contact material | | | | | | |
| 6 | 5.21mm (.205in) quick connect/solder; AgCdO | | | 8 | 4.75mm (.187in) quick connect/solder; AgCdO | |
| 9 | 1.19mm (.047in) PCB, AgCdO | | | G | 6.35mm (.250in) quick connect/solder; AgCdO ²⁾ | |
| R | 5.21mm (.205in) quick connect/solder; AgSnOInO | | | T | 4.75mm (.187in) quick connect/solder; AgSnOInO | |
| U | 1.19mm (.047in) PCB, AgSnOInO | | | V | 6.35mm (.250in) quick connect/solder; AgSnOInO ²⁾ | |
| ²⁾ 6.35mm (.250in) quick connect/solder terminals are not available on 3 pole relays | | | | | | |
| Coil voltage | | | | | | |
| Coil code: please refer to coil versions table | | | | | | |

| Product Code | Arrangement | Material | Coil | Terminals | Mounting | Part Number |
|----------------|----------------|----------|---------|--------------------|--------------------------|-------------|
| KUMP-11A18-24 | 2 Form C; 2 CO | AgCdO | 24 VAC | 4.75mm (.187in) QC | Socket mount, plain case | 6-1393116-3 |
| KUMP-11A18-120 | | | 120 VAC | | | 6-1393116-2 |
| KUMP-11A18-240 | | | 240 VAC | | | 6-1393116-4 |
| KUMP-11D18-12 | 3 Form C, 3 CO | | 12 VDC | | | 7-1393116-1 |
| KUMP-11D18-24 | | | 24 VDC | | | 7-1393116-2 |
| KUMP-11D18-110 | | | 110 VDC | | | 7-1393116-0 |
| KUMP-14A18-24 | | | 24 VAC | | | 8-1393116-5 |
| KUMP-14A18-120 | | | 120 VAC | | | 8-1393116-4 |
| KUMP-14D18-12 | | | 12 VDC | | | 9-1393116-0 |
| KUMP-14D18-24 | | | 24 VDC | | | 9-1393116-1 |



Компания «ЭлектроПласт» предлагает заключение долгосрочных отношений при поставках импортных электронных компонентов на взаимовыгодных условиях!

Наши преимущества:

- Оперативные поставки широкого спектра электронных компонентов отечественного и импортного производства напрямую от производителей и с крупнейших мировых складов;
- Поставка более 17-ти миллионов наименований электронных компонентов;
- Поставка сложных, дефицитных, либо снятых с производства позиций;
- Оперативные сроки поставки под заказ (от 5 рабочих дней);
- Экспресс доставка в любую точку России;
- Техническая поддержка проекта, помощь в подборе аналогов, поставка прототипов;
- Система менеджмента качества сертифицирована по Международному стандарту ISO 9001;
- Лицензия ФСБ на осуществление работ с использованием сведений, составляющих государственную тайну;
- Поставка специализированных компонентов (Xilinx, Altera, Analog Devices, Intersil, Interpoint, Microsemi, Aeroflex, Peregrine, Syfer, Eurofarad, Texas Instrument, Miteq, Cobham, E2V, MA-COM, Hittite, Mini-Circuits, General Dynamics и др.);

Помимо этого, одним из направлений компании «ЭлектроПласт» является направление «Источники питания». Мы предлагаем Вам помощь Конструкторского отдела:

- Подбор оптимального решения, техническое обоснование при выборе компонента;
- Подбор аналогов;
- Консультации по применению компонента;
- Поставка образцов и прототипов;
- Техническая поддержка проекта;
- Защита от снятия компонента с производства.



Как с нами связаться

Телефон: 8 (812) 309 58 32 (многоканальный)

Факс: 8 (812) 320-02-42

Электронная почта: org@eplast1.ru

Адрес: 198099, г. Санкт-Петербург, ул. Калинина, дом 2, корпус 4, литера А.