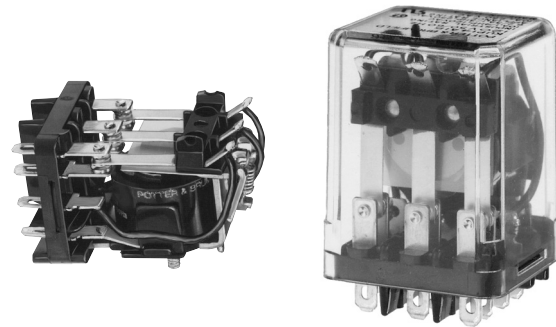


**KUP Series Panel Plug-in Relay**

- AC coils: 5-240VAC, 50/60 Hz.; DC coils 6-110VDC
- Contact arrangements of 1 form X, 1-3 form A and 1-4 form C
- Wide selection of termination and mounting styles
- PC terminals available
- Push-to-test button and indicator lamp options
- Sockets available for panel, DIN rail or PCB mounting
- Class B coil insulation



Typical applications

Vending, commercial sewing, tool/die equipment, robotics, timers, welding, HVAC, medical, power generators

**Approvals**

UL E22575; CSA LR15734  
Technical data of approved types on request

**Contact Data**

|                               |  |              |              |
|-------------------------------|--|--------------|--------------|
| Contact arrangement           | 1 Form X (NO-DM); 1-3 Form A (NO); 1-4 Form C (CO) |              |              |
| Rated voltage                 | 240VAC   |              |              |
| Rated current                 | 10A  |              |              |
| Contact material              | Ag   | AgCdO        | AgSnOInO     |
| Min. recommended contact load | 100mA, 12VDC                                       | 300mA, 12VDC | 300mA, 12VDC |
| Frequency of operation        | 360 ops./hr  | 360 ops./hr  | 360 ops./hr  |
| Operate/releases time max.    | 15/10ms  |              |              |
| Bounce time max.              | 17ms   |              |              |

**Contact ratings**

| Type                   | Load                   | Cycles             |
|------------------------|------------------------|--------------------|
| <b>UL 508</b>          |                        |                    |
| Ag, 1, 2 and 3 pole    |                        |                    |
|                        | 5A, 240VAC             |                    |
|                        | 5A, 28VDC              |                    |
|                        | 1/6HP, 120VAC          |                    |
|                        | 2.5A, 120VAC, tungsten |                    |
|                        | 1/3HP, 240VAC          |                    |
|                        | 0.5A, 120VDC           |                    |
|                        | 5FLA, 15LRA, 250VAC    |                    |
| Ag, 4 pole             |                        |                    |
|                        | 5A, 240VAC             |                    |
|                        | 2.5A, 120VAC, tungsten |                    |
|                        | 0.5A, 120VDC           |                    |
|                        | 1/6HP, 120VAC          |                    |
|                        | 1/3HP, 240VAC          |                    |
| AgCdO, 1, 2 and 3 pole |                        |                    |
|                        | 10A, 240VAC            |                    |
|                        | 10A, 32VDC             |                    |
|                        | 5FLA, 15LRA, 250VAC    |                    |
|                        | 1/3HP, 120VAC          |                    |
|                        | 5A, 120VAC, tungsten   |                    |
|                        | 1/2HP, 250VAC          |                    |
|                        | 0.5A, 125VDC           |                    |
|                        | 10FLA, 40LRA, 125VAC   |                    |
|                        | 3A, 600VAC             |                    |
|                        | 1/2HP, 480VAC          |                    |
|                        | 1/2HP, 600VAC          |                    |
|                        | 1HP, 480 VAC, 3 phase  |                    |
| AgCdO, 4 pole          |                        |                    |
|                        | 10A, 240VAC            |                    |
|                        | 5A, 120VAC, tungsten   |                    |
|                        | 0.5A, 120VDC           |                    |
|                        | 10A, 28VDC, resistive  |                    |
|                        | 10FLA, 30LRA, 125VAC   |                    |
|                        | 5FLA, 15LRA, 250 VAC   | 30x10 <sup>3</sup> |
|                        | 125VA, 250 VAC         |                    |

|  |                         |                     |
|--|-------------------------|---------------------|
| AgCdO, 4 pole (continued)  |                         |                     |
|  | 1/3HP, 120VAC           |                     |
|  | 1/2HP, 250VAC           |                     |
| Total load not to exceed 30 A, 28 VDC, 120 VAC and 20 A, 250 VAC |                         |                     |
| AgSnOInO   |                         |                     |
|  | 10A, 277VAC, pf = 0.8   | 100x10 <sup>3</sup> |
| Mechanical endurance   | 10x10 <sup>6</sup> ops. |                     |

**Coil Data**

|                                     |                            |
|-------------------------------------|----------------------------|
| Coil voltage range                  | 5 to 110VDC<br>6 to 240VAC |
| Coil insulation system according UL | Class B                    |

**Coil versions, DC coil**

| Coil code       | Rated voltage VDC | Operate voltage VDC | Coil resistance Ω±10% | Rated coil power W |
|-----------------|-------------------|---------------------|-----------------------|--------------------|
| 1, 2 and 3 pole |                   |                     |                       |                    |
| 5               | 5                 | 3.75                | 21                    | 1.2                |
| 6               | 6                 | 4.5                 | 32.1                  | 1.125              |
| 12              | 12                | 9.0                 | 120                   | 1.2                |
| 24              | 24                | 18.0                | 472                   | 1.25               |
| 48              | 48                | 36.0                | 1800                  | 1.3                |
| 110             | 110               | 82.5                | 10000                 | 1.25               |
| 4 pole          |                   |                     |                       |                    |
| 5               | 5                 | 3.75                | 14                    | 1.8                |
| 6               | 6                 | 4.5                 | 20                    | 1.8                |
| 12              | 12                | 9.0                 | 80                    | 1.8                |
| 24              | 24                | 18.0                | 320                   | 1.8                |
| 48              | 48                | 36.0                | 1250                  | 1.85               |
| 110             | 110               | 82.5                | 6720                  | 1.8                |

All figures are given for coil without preenergization, at ambient temperature +23°C.

**Coil versions, AC coil**

| Coil code    | Rated voltage VAC | Operate voltage VAC | Coil resistance Ω±15% | Rated coil power VA |
|--------------|-------------------|---------------------|-----------------------|---------------------|
| 1 and 2 pole |                   |                     |                       |                     |
| 6            | 6                 | 5.1                 | 6                     | 2.0                 |
| 12           | 12                | 10.2                | 24                    | 2.0                 |
| 24           | 24                | 20.4                | 85                    | 2.0                 |
| 120          | 120               | 102.0               | 2250                  | 2.1                 |
| 240          | 240               | 204.0               | 9110                  | 2.1                 |
| 3 and 4 pole |                   |                     |                       |                     |
| 6            | 6                 | 5.1                 | 4.2                   | 2.8                 |
| 12           | 12                | 10.2                | 18                    | 2.8                 |
| 24           | 24                | 20.4                | 72                    | 2.8                 |
| 120          | 120               | 102.0               | 1700                  | 2.9                 |
| 240          | 240               | 204.0               | 7200                  | 2.9                 |

All figures are given for coil without preenergization, at ambient temperature +23°C.

**KUP Series Panel Plug-in Relay (Continued)**

**Insulation Data**

|                               |                      |
|-------------------------------|----------------------|
| Initial dielectric strength   |                      |
| between open contacts         | 1200V <sub>rms</sub> |
| between contact and coil      | 2200V <sub>rms</sub> |
| between adjacent contacts     | 2200V <sub>rms</sub> |
| Initial insulation resistance |                      |
| between insulated elements    | 100MΩ, 500VDC        |

**Other Data**

Material compliance: EU RoHS/ELV, China RoHS, REACH, Halogen content refer to the Product Compliance Support Center at [www.te.com/customersupport/rohssupportcenter](http://www.te.com/customersupport/rohssupportcenter).

**Ambient temperature**

|         |   |
|---------|---|
| DC coil | Enclosed relays, 4 pole: -45°C to 50°C        |
|         | Enclosed relays, 1-3 pole: -45°C to 70°C      |
|         | Open relays: 15°C higher maximum              |
| AC coil | Enclosed relays, 3 and 4 pole: -45°C to +45°C |
|         | Enclosed relays, 1 and 2 pole: -45°C to +55°C |
|         | Open relays: 15°C higher maximum              |

**Maximum allowable ambient temperature vs voltage (KUP enclosed)**



**Dimensions**

**KU bracket type**



**KU stud type**



**Seated Heights For KU (open) Relays**

- 1.391" (35.33mm) for #6-32 stud with .218" (5.54mm) locating tab.
- 1.52" (38.6mm) for bracket with 2-#6 32 tapped holes.
- 1.282" (32.56mm) for #6-32 tapped core with .125" (3.18mm) or .218" (5.54mm) locating tab.
- 2.046" (51.97mm) for relay with printed circuit terminals.

STUD TYPE also available with .125" (3.18mm) tab, as well as without stud and locating tab. Models without stud have core tapped #6-32 THREAD, .25" (6.4mm) minimum depth.

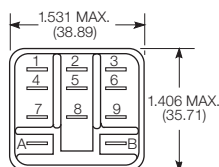
- \*Dimensions with .250" (6.35mm) terminals.
- \*\* Dimensions with .110" (2.79mm) or .205" (5.21mm) terminals.
- \*\*\* Dimensions with .187" (4.75mm) terminals.

**Relay front diagrams**

**Models with 6.35mm (.250) QC terminals**



**1-3 pole models with all other terminals**



**4 pole models**



**Other Data (continued)**

|                                      |  |
|--------------------------------------|--|
| Category of environmental protection |  |
| IEC 61810                            | RT0 - open relay; RTI - dust protected           |
| Terminal type                        |  |
|                                      | Quick connects (QC), .187, .205 or .250; PCB-THT |
| Terminal retention, push force       |  |
| QC .205                              | 17 lbs for 3s                                    |
| QC .187, QC .250, PCB                | 25 lbs for 3s                                    |
| Weight                               |  |
|                                      | 85g  |
| Packaging/unit                       |  |
|                                      | tray/25 pcs., box/150pcs.                        |

**Accessories**

For details see datasheet      Sockets and Accessories, KUP Relays

| Product Code | Description  |
|--------------|--|
| 27E893       | DIN socket (use 20C318 clip)                         |
| 27E121       | Track mount socket (use 20C314 clips)                |
| 27E043       | Chassis mount/solder eyelet socket (use 20C254 clip) |
| 27E046       | Chassis mount/PCB socket (use 20C254 clip)           |
| 27E067       | Chassis mount/quick connect socket (use 20C254 clip) |
| 27E396       | Snap-in/quick connect socket (use 20C254 clip)       |

**KUP Series Panel Plug-in Relay (Continued)**

**Dimensions (continued)**

**KUP plain case**

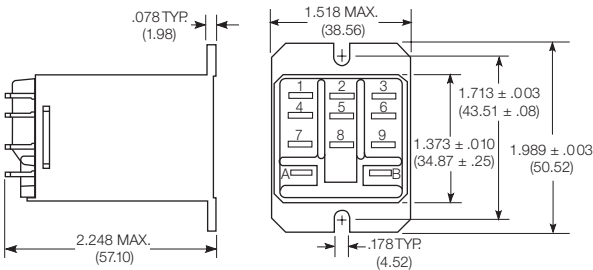


X Is For Terminal Dimensions.  
See Terminal Drawings.

**KUP core / stud mount case**

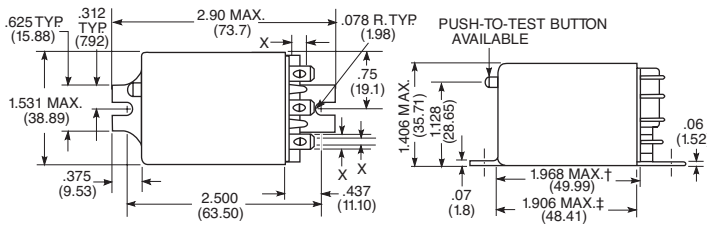


**KUP top flange case**

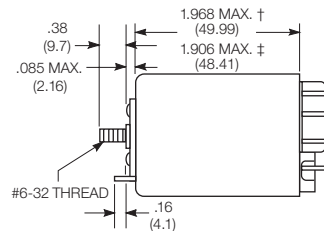


† Dimensions with .250" (6.35mm) terminals.  
‡ Dimensions with .187" (4.75mm and .205" 5.21mm) terminals.  
\* Dimensions with .250" (6.35mm) terminals.  
\*\* Dimensions with .110" (2.79mm) or .205" (5.21mm) terminals.  
\*\*\* Dimensions with .187" (4.75mm) terminals.

**KUP bracket mount case**

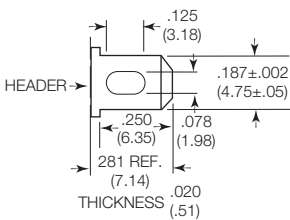


**KUP stud on end case**

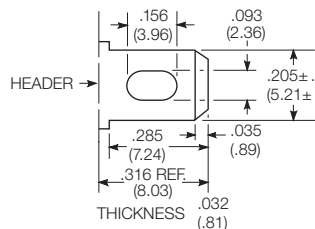


**Terminal dimensions**

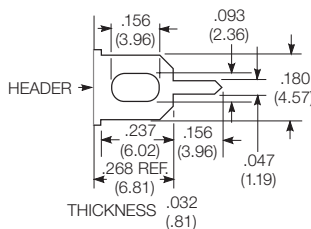
**4.75mm (.187) quick connect**



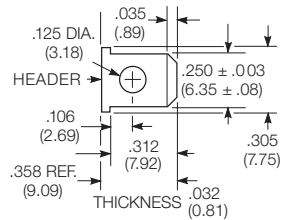
**5.21mm (.205) quick connect**



**1.19mm (.047) printed circuit**

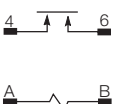


**6.35mm (.250) quick connect**



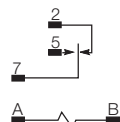
**Terminal assignment**

**1 Form X**



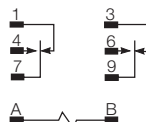
**1 Form C**

1 Form A (delete 2)



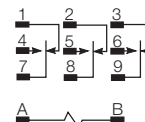
**2 Form C**

2 Form A (delete 1 & 3)

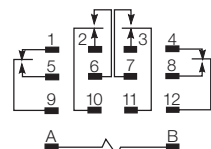


**3 Form C**

3 Form A (delete 1, 2 & 3)



**4 Form C**



**KUP Series Panel Plug-in Relay** (Continued)

**PCB layout**

Bottom view on solder pins

1 form X version



3 pole version  
(Omit unnecessary holes for form A and 2 pole types)



4 pole version



**Product code structure**

Typical product code **KUP -14 A 1 5 -120**

| Type                       | KUP Enclosed relay          |                           |
|----------------------------|-----------------------------|---------------------------|
| <b>KU</b> Open style relay |                             |                           |
| <b>Contact arrangement</b> |                             |                           |
| <b>1</b> 1 form A (1 NO)   | <b>3</b> 1 form X (1 NO-DM) | <b>5</b> 1 form C (1 CO)  |
| <b>7</b> 2 form A (2 NO)   | <b>11</b> 2 form C (2 CO)   | <b>12</b> 3 form A (3 NO) |
| <b>14</b> 3 form C (3 CO)  | <b>17</b> 4 form C (4 CO)   |                           |
| <b>Coil Input</b>          |                             |                           |
| <b>A</b> AC, 50/60Hz       | <b>D</b> DC                 |                           |

**Mounting and options**

**KU**

- 1** #6-32 mounting stud, 5.54mm (.218in) locating tab
- 3** #6-32 tapped core, 3.18mm (.125in) locating tab
- 4** #6-32 tapped core, 5.54mm (.218in) locating tab
- 5** #6-32 tapped core, no locating tab

**KUP**

- 1** Socket mount (plain) case
- 2** Socket mount (plain) case with push-to-test button 1)
- 3** Socket mount (plain) case with indicator lamp 2)
- 4** Socket mount (plain) case with indicator lamp and push-to-test button 1) 2)
- 5** Bracket mount case
- A** Plain case with #6-32 stud and locating tab
- E** Plain case with #6-32 tapped core and locating tab
- T** Top flange case 1)

1) Not available with four pole models (Contact arrangement 17).

2) Indicator lamps are available on models with the following coils: 6-24VAC and VDC, 110VDC and 120-240VAC. Only models with 120-240VAC coils are UL recognized.

**Terminal and contact material**

**1 and 2 pole models**

- |  |   |
|--|---|
| <b>1</b> 4.75mm (.187in) quick connect/solder; Ag, 5A        | <b>3</b> 1.19mm (.047in) PCB; Ag, 5A                      |
| <b>5</b> 4.75mm (.187in) quick connect/solder; AgCdO, 10A    | <b>7</b> 1.19mm (.047in) PCB; AgCdO, 10A                  |
| <b>J</b> 6.35mm (.250in) quick connect/solder; Ag, 5A        | <b>K</b> 6.35mm (.250in) quick connect/solder; AgCdO, 10A |
| <b>P</b> 4.75mm (.187in) quick connect/solder; AgSnOInO, 10A | <b>S</b> 1.19mm (.047in) PCB, AgSnOInO; 10A               |
| <b>W</b> 6.35mm (.250in) quick connect/solder; AgSnOInO, 10A |   |

**3 pole models**

- |  |   |
|--|---|
| <b>1</b> 4.75mm (.187in) quick connect/solder; Ag, 5A        | <b>3</b> 1.19mm (.047in) PCB; Ag, 5A        |
| <b>5</b> 4.75mm (.187in) quick connect/solder; AgCdO, 10A    | <b>7</b> 1.19mm (.047in) PCB; AgCdO, 10A    |
| <b>P</b> 4.75mm (.187in) quick connect/solder; AgSnOInO, 10A | <b>S</b> 1.19mm (.047in) PCB, AgSnOInO; 10A |

**4 pole models**

- |   |  |
|---|--|
| <b>1</b> 4.75mm (.187in) quick connect/solder; Ag, 5A 3)        | <b>3</b> 1.19mm (.047in) PCB; Ag, 5A                         |
| <b>4</b> 2.79mm (.110in) quick connect/solder; Ag, 5A           | <b>5</b> 4.75mm (.187in) quick connect/solder; AgCdO, 10A 3) |
| <b>7</b> 1.19mm (.047in) PCB; AgCdO, 10A                        | <b>9</b> 2.79mm (.110in) quick connect/solder; AgCdO, 10A    |
| <b>P</b> 4.75mm (.187in) quick connect/solder; AgSnOInO, 10A 3) | <b>S</b> 1.19mm (.047in) PCB, AgSnOInO; 10A                  |
| <b>U</b> 2.79mm (.110in) quick connect/solder; AgSnOInO, 10A 2) |  |

3) 4 pole KUP with 4.75mm (.187in) terminals will not plug into sockets. Must use 2.79mm (.110) terminals for socket mounting.

**Au flashed contact option**

- Leave Blank** No Au flashing on contacts
- F** Optional Au flashing on contacts

**Coil voltage**

Coil code: please refer to coil versions table

**KUP Series Panel Plug-in Relay** (Continued)

| Product Code   | Arrangement    | Material                            | Coil  | Terminals                | Mounting                 | Part Number              |                          |
|----------------|----------------|-------------------------------------|---|--------------------------|--------------------------|--------------------------|--------------------------|
| KUP-5A15-24    | 1 form C, 1 CO | AgCdO                               | 24VAC                                       | 4.75mm (.187in) QC       | Socket mount, plain case | 6-1393118-0              |                          |
| KUP-5A15-120   |                |                                     | 120VAC                                      |                          |                          | 5-1393119-9              |                          |
| KUP-5A15-240   |                |                                     | 240VAC                                      |                          |                          | 6-1393118-1              |                          |
| KUP-5A55-120   |                |                                     | 120VAC                                      |                          |                          | Bracket mount case       | 6-1393118-3              |
| KUP-5D15-12    |                |                                     | 12VDC                                       |                          |                          | Socket mount, plain case | 6-1393118-6              |
| KUP-5D15-24    |                |                                     | 24VDC                                       |                          |                          | 6-1393118-7              |                          |
| KUP-5D55-12    |                |                                     | 12VDC                                       |                          |                          | Bracket mount case       | 7-1393118-0              |
| KUP-5D55-24    | 24VDC          | 7-1393118-1                         |   |                          |                          |                          |                          |
| KUP-11A11-120  | 2 form C, 2 CO | Ag                                  | 120VAC                                      | 4.75mm (.187in) QC       | Socket mount, plain case | 1-1393117-7              |                          |
| KUP-11A15-12   |                | AgCdO                               | 12VDC                                       |                          | 1-1393117-8              |                          |                          |
| KUP-11A15-24   |                | 24VAC                               | 2-1393117-1                                 |                          |                          |                          |                          |
| KUP-11A15-120  |                | 120VAC                              | 1-1393117-9                                 |                          |                          |                          |                          |
| KUP-11A15-240  |                | 240VAC                              | 2-1393117-2                                 |                          |                          |                          |                          |
| KUP-11A35-120  |                | 120VAC                              | Socket mount case w/ indicator lamp         |                          | 2-1393117-5              |                          |                          |
| KUP-11A55-24   |                | 24VAC                               | Bracket mount case                          |                          | 3-1393117-0              |                          |                          |
| KUP-11A55-120  |                | 120VAC                              | 2-1393117-9                                 |                          |                          |                          |                          |
| KUP-11AT5-120  |                |                                     | Top flange case                             |                          | 1-1393117-4              |                          |                          |
| KUP-11D11-24   |                | Ag                                  | 24VDC                                       |                          | Socket mount, plain case | 4-1393117-2              |                          |
| KUP-11D15-5    |                | AgCdO                               | 5VDC  |                          | 4-1393117-8              |                          |                          |
| KUP-11D15-12   |                | 12VDC                               | 4-1393117-4                                 |                          |                          |                          |                          |
| KUP-11D15-24   |                | 24VDC                               | 4-1393117-5                                 |                          |                          |                          |                          |
| KUP-11D15-36   |                | 36VDC                               | 4-1393117-6                                 |                          |                          |                          |                          |
| KUP-11D15-110  |                | 110VDC                              | 4-1393117-3                                 |                          |                          |                          |                          |
| KUP-11D35-24   | 24VDC          | Socket mount case w/ indicator lamp | 5-1393117-3                                 |                          |                          |                          |                          |
| KUP-11D55-6    | 6VDC           | Bracket mount case                  | 6-1393117-0                                 |                          |                          |                          |                          |
| KUP-11D55-12   | 12VDC          | 5-1393117-6                         |   |                          |                          |                          |                          |
| KUP-11D55-24   | 24VDC          | 5-1393117-8                         |   |                          |                          |                          |                          |
| KUP-11D55-48   | 48VDC          | 5-1393117-9                         |   |                          |                          |                          |                          |
| KUP-11D55-110  | 110VDC         | 5-1393117-5                         |   |                          |                          |                          |                          |
| KUP-14A11-120  | 3 form C, 3 CO | Ag                                  | 120VAC                                      | 4.75mm (.187in) QC       | Socket mount, plain case | 7-1393117-3              |                          |
| KUP-14A15-12   |                | AgCdO                               | 12VAC                                       |                          | 7-1393117-7              |                          |                          |
| KUP-14A15-24   |                | 24VAC                               | 7-1393117-9                                 |                          |                          |                          |                          |
| KUP-14A15-120  |                | 120VAC                              | 7-1393117-8                                 |                          |                          |                          |                          |
| KUP-14A15-240  |                | 240VAC                              | 8-1393117-0                                 |                          |                          |                          |                          |
| KUP-14A25-120  |                | 120VAC                              | Socket mount w/ test button                 |                          | 8-1393117-3              |                          |                          |
| KUP-14A35-120  |                |                                     | Socket mount w/ indicator lamp              |                          | 8-1393117-7              |                          |                          |
| KUP-14A35-240  |                | 240VAC                              | 8-1393117-9                                 |                          |                          |                          |                          |
| KUP-14A35F-120 |                | AgCdO w/ Au flash                   | 120VAC                                      |                          | 9-1393117-0              |                          |                          |
| KUP-14A45-120  |                | AgCdO                               | Socket mount w/ test button, indicator lamp |                          | 9-1393117-4              |                          |                          |
| KUP-14A55-24   |                | 24VAC                               | Bracket mount case                          |                          | 1393118-2                |                          |                          |
| KUP-14A55-120  |                | 120VAC                              | 9-1393117-9                                 |                          |                          |                          |                          |
| KUP-14A55-240  |                | 240VAC                              | 1393118-3                                   |                          |                          |                          |                          |
| KUP-14D11-24   |                | Ag                                  | 24VDC                                       |                          | Socket mount, plain case | 1-1393118-0              |                          |
| KUP-14D15-6    |                | AgCdO                               | 6VDC  |                          | 1-1393118-8              |                          |                          |
| KUP-14D15-12   |                | 12VDC                               | 1-1393118-3                                 |                          |                          |                          |                          |
| KUP-14D15-24   |                | 24VDC                               | 1-1393118-4                                 |                          |                          |                          |                          |
| KUP-14D15-48   |                | 48VDC                               | 1-1393118-7                                 |                          |                          |                          |                          |
| KUP-14D15-110  |                | 110VDC                              | 1-1393118-2                                 |                          |                          |                          |                          |
| KUP-14D25-24   |                | 24VDC                               | Socket mount w/ test button                 |                          | 2-1393118-3              |                          |                          |
| KUP-14D35-24   |                |                                     | Socket mount w/ indicator lamp              |                          | 2-1393118-7              |                          |                          |
| KUP-14D35-110  |                | 110VDC                              | 2-1393118-6                                 |                          |                          |                          |                          |
| KUP-14D35F-110 |                | AgCdO w/ Au flash                   | 2-1393118-9                                 |                          |                          |                          |                          |
| KUP-14D45-110  |                | AgCdO                               | Socket mount w/ test button, indicator lamp |                          | 3-1393118-1              |                          |                          |
| KUP-14D55-12   |                | 12VDC                               | Bracket mount case                          |                          | 3-1393118-7              |                          |                          |
| KUP-14D55-24   |                | 24VDC                               | 3-1393118-8                                 |                          |                          |                          |                          |
| KUP-17A19-120  |                | 4 form C, 4 CO                      |   |                          | 120VAC                   | 2.79mm (.110in) QC       | Socket mount, plain case |
| KUP-17A55-24   | 24VAC          |                                     |   | Bracket mount case       | 4-1393118-6              |                          |                          |
| KUP-17D19-24   | 24VDC          |                                     |   | Socket mount, plain case | 5-1393118-0              |                          |                          |
| KUP-17D55-24   | 24VDC          |                                     |   | Bracket mount case       | 5-1393118-3              |                          |                          |



Компания «ЭлектроПласт» предлагает заключение долгосрочных отношений при поставках импортных электронных компонентов на взаимовыгодных условиях!

Наши преимущества:

- Оперативные поставки широкого спектра электронных компонентов отечественного и импортного производства напрямую от производителей и с крупнейших мировых складов;
- Поставка более 17-ти миллионов наименований электронных компонентов;
- Поставка сложных, дефицитных, либо снятых с производства позиций;
- Оперативные сроки поставки под заказ (от 5 рабочих дней);
- Экспресс доставка в любую точку России;
- Техническая поддержка проекта, помощь в подборе аналогов, поставка прототипов;
- Система менеджмента качества сертифицирована по Международному стандарту ISO 9001;
- Лицензия ФСБ на осуществление работ с использованием сведений, составляющих государственную тайну;
- Поставка специализированных компонентов (Xilinx, Altera, Analog Devices, Intersil, Interpoint, Microsemi, Aeroflex, Peregrine, Syfer, Eurofarad, Texas Instrument, Miteq, Cobham, E2V, MA-COM, Hittite, Mini-Circuits, General Dynamics и др.);

Помимо этого, одним из направлений компании «ЭлектроПласт» является направление «Источники питания». Мы предлагаем Вам помощь Конструкторского отдела:

- Подбор оптимального решения, техническое обоснование при выборе компонента;
- Подбор аналогов;
- Консультации по применению компонента;
- Поставка образцов и прототипов;
- Техническая поддержка проекта;
- Защита от снятия компонента с производства.



#### Как с нами связаться

**Телефон:** 8 (812) 309 58 32 (многоканальный)

**Факс:** 8 (812) 320-02-42

**Электронная почта:** [org@eplast1.ru](mailto:org@eplast1.ru)

**Адрес:** 198099, г. Санкт-Петербург, ул. Калинина, дом 2, корпус 4, литера А.