



MAX15008 Evaluation Kit

General Description

The MAX15008 evaluation kit (EV kit) is a complete, fully assembled and tested printed-circuit board (PCB) that demonstrates the capabilities of the MAX15008. The MAX15008 features a configurable LDO voltage regulator, a voltage tracker, and an overvoltage protector. The LDO is configured to 5V, 300mA output. The voltage tracker is configured to track the LDO output voltage and provides up to 50mA. The overvoltage protector threshold is configured to 17.7V.

The EV kit circuit features a $\overline{\text{RESET}}$ output signal to indicate output fault and normal operating conditions. The EV kit circuit board can also be used to evaluate the MAX15009, MAX15010†, or MAX15011† ICs.

†Future product—contact factory for availability.

Features

- ◆ **Wide Operating Supply Voltage Range: 5V to 40V**
- ◆ **300mA LDO Configured to 5V (Supply Voltage \geq 6.5V)**
- ◆ **50mA Voltage Tracker**
- ◆ **Configurable Overvoltage Protector Threshold**
- ◆ **Output Signal ($\overline{\text{RESET}}$) for Circuit Monitoring**
- ◆ **Can be Used to Evaluate the MAX15009, MAX15010†, or MAX15011† ICs**
- ◆ **Fully Assembled and Tested**

Ordering Information

PART	TYPE
MAX15008EVKIT+	EV Kit

+Denotes lead-free and RoHS-compliant.

Component List

DESIGNATION	QTY	DESCRIPTION
C1	1	10 μ F \pm 20%, 50V aluminum electrolytic capacitor (C case) Panasonic EEEFK1H100UR
C2	1	0.1 μ F \pm 10%, 50V X7R ceramic capacitor (0603) TDK C1608X7R1H104K
C3	1	0.15 μ F \pm 10%, 25V X7R ceramic capacitor (0603) TDK C1608X7R1E154K
C4	1	3.3 μ F \pm 20%, 50V X7R ceramic capacitor (1210) TDK C3225X7R1H335M
C5	1	22 μ F \pm 20%, 16V X5R ceramic capacitor (1206) Murata GRM31CR61C226M or Taiyo Yuden EMK316BJ226M
C6	1	10 μ F \pm 20%, 35V aluminum electrolytic capacitor (B case) Panasonic EEEFK1V100UR
C7	1	22 μ F \pm 20%, 50V aluminum electrolytic capacitor (D case) Panasonic EEEFK1H220P

DESIGNATION	QTY	DESCRIPTION
C8, C9, C10	0	Not installed, ceramic capacitors (0603)
C11, C13	0	Not installed, aluminum electrolytic capacitors (D case)
C12	0	Not installed, ceramic capacitor (1210)
D1	1	54V, 5W TVS diode (SMB) Diodes Inc. SMBJ54A
JU1–JU4	4	2-pin headers
N1	1	100V, 44A n-channel MOSFET (D pack) Fairchild FDD3672
R1, R4, R6, R12–R15	0	Not installed, resistors (0603)
R2	1	0 Ω \pm 5% resistor (0603)
R3, R5, R8, R10, R11	5	10k Ω \pm 1% resistors (0603)
R7, R9	2	133k Ω \pm 1% resistors (0603)
U1	1	MAX15008ATJ+ (32-pin TQFN-EP)
—	4	Shunts (JU1–JU4)
—	1	PCB: MAX15008 Evaluation Kit+



MAX15008 Evaluation Kit

Quick Start

Recommended Equipment

- Two 5V to 40V, 1A adjustable power supplies
- Four voltmeters

Procedure

The MAX15008 EV kit is a fully assembled and tested surface-mount board. Follow the steps below for simple board operation. **Caution: Do not turn on the power supply until all connections are completed.**

- 1) Verify that shunts are installed across jumpers JU1 (LDO enabled), JU2 ($\overline{\text{HOLD}}$ enabled), JU3 (tracker enabled), and JU4 (overvoltage protector enabled).
- 2) Set the first power supply to 10V and disable the output. Connect the positive terminal of this power supply to the IN PCB pad. Connect the ground terminal of this power supply to the SGND PCB pad located next to the IN pad.
- 3) Set the second power supply to 8V and disable the output. Connect the positive terminal of this power supply to the TRACK PCB pad. Connect the ground terminal of this power supply to the SGND PCB pad located next to the TRACK pad.
- 4) Connect a voltmeter across the OUT_LDO and SGND PCB pads.
- 5) Connect a voltmeter across the OUT_TRK and SGND PCB pads.
- 6) Connect a voltmeter across the OUT_PROTECT and PGND PCB pads.
- 7) Connect a voltmeter across the $\overline{\text{RESET}}$ and SGND PCB pads.
- 8) Turn on the IN and TRACK power supplies.
- 9) Verify that the OUT_LDO output measures 5V.
- 10) Verify that the OUT_TRK output measures 5V.

11) Verify that the OUT_PROTECT output measures 10V.

12) Verify that the $\overline{\text{RESET}}$ output signal measures 5V.

13) The EV kit is ready for further testing.

Detailed Description

The MAX15008 EV kit is a fully assembled and tested circuit that demonstrates the capabilities of the MAX15008. The MAX15008 features a configurable LDO voltage regulator, a voltage tracker, and an overvoltage protector. The LDO is configured to 5V and provides up to 300mA. The voltage tracker is configured to track the LDO output voltage and provides up to 50mA. The overvoltage protector threshold is configured to 17.7V with resistors R9 and R10. The LDO output voltage is configured with external resistors R1 and R2. The tracker output voltage can be configured to track a wide range of voltages up to 35V by replacing resistors R3–R6. The EV kit input-voltage range is up to 40V, but may have to be decreased to not exceed the maximum continuous power dissipation rating of the MAX15008 IC.

The EV kit $\overline{\text{RESET}}$ output signal can be used to monitor the LDO output operating conditions or to reset circuitry connected at the LDO output.

Input Power Supplies

The MAX15008 EV kit requires an input power source of 5V to 40V, 1A connected across IN and SGND and another 5V to 40V, 1A power source connected across TRACK and SGND for normal operation. The power source connected to IN supplies power to the MAX15008 IC, the LDO input, and the overvoltage protector input, while the power source connected to TRACK supplies power to the tracker input. The overvoltage protector input (IN2) can be separated from the main input (IN) by cutting open the shorting trace between the IN and IN2 PCB pads. Connect a separate power supply across the IN2 and PGND PCB pads and install a 4.7 μ F to 10 μ F electrolytic capacitor at C11. In order to evaluate the LDO performance at 5V output, never set the IN supply voltage below 6.5V.

Component Suppliers

SUPPLIER	PHONE	WEBSITE
Diodes Inc.	805-446-4800	www.diodes.com
Fairchild Semiconductors	888-522-5372	www.fairchildsemi.com
Murata Mfg. Co., Ltd.	770-436-1300	www.murata.com
Panasonic Corp.	800-344-2112	www.panasonic.com
Taiyo Yuden	800-348-2496	www.t-yuden.com
TDK Corp.	847-803-6100	www.component.tdk.com

Note: Indicate that you are using the MAX15008 when contacting these component suppliers.

MAX15008 Evaluation Kit

Evaluates: MAX15008-MAX15011

LDO Regulator

The MAX15008 EV kit's 300mA LDO output (OUT_LDO) is configured to the 5V default output voltage by resistor R2, which connects the FB_LDO pin to SGND. The LDO input accepts a power source up to 40V. However, operating the LDO at maximum conditions can exceed the maximum continuous power dissipation rating of the MAX15008 IC. This will cause the IC to shut down after exceeding the internal thermal shut-down threshold. The LDO output voltage can be reconfigured between 1.8V and 11V by removing the 0Ω R2 resistor and installing resistors at R1 and R2. Use the following equation to select new resistor values:

$$R1 = R2 \times \left(\frac{OUT_LDO}{1.235V} - 1 \right)$$

where R2 is less than 50kΩ and OUT_LDO is the desired LDO output voltage.

LDO Control Logic

The MAX15008 LDO features two logic inputs (EN_LDO and \overline{HOLD}) to enable or disable the output during power-on or normal operating conditions. The EV kit features jumpers JU1 and JU2, which can be used to set the EN_LDO and \overline{HOLD} input pins, respectively. See Table 1 for jumpers JU1 and JU2 configuration.

Table 1. LDO Control Logic (Jumpers JU1 and JU2)

OPERATION STATE	SHUNT STATUS (JU1—EN_LDO)	SHUNT STATUS (JU2— \overline{HOLD})	LDO OUTPUT	OPERATING CONDITIONS
Initial Power On	Not installed	X	Disabled	EN_LDO pin is connected to ground SGND through an internal pulldown
	Installed	X	Enabled	EN_LDO pin is connected to IN
Hold Setup	Installed	Installed	Enabled	Shunt is installed on jumper JU2, while shunt on jumper JU1 is in the installed state
Hold	Not installed	Installed		LDO remains enabled if the shunt is removed from jumper JU1
Off	Not installed	Not installed*	Disabled	LDO is disabled if shunt on jumper JU2 is removed, while shunt on jumper JU1 is not installed

X = Don't care.

*The \overline{HOLD} pin is internally driven to OUT_LDO if the shunt on jumper JU2 is not installed.

MAX15008 Evaluation Kit

Voltage Tracker

The MAX15008 voltage tracker input power supply, of up to 40V, must be connected to the TRACK PCB pad. The tracker output (OUT_TRK) can source up to 50mA and is configured to track the OUT_LDO output voltage by connecting the ADJ pin to OUT_LDO through resistor R3, and connecting the FB_TRK pin to OUT_TRACK through resistor R5. The ADJ pin voltage setting sets the feedback tracker voltage threshold at the FB_TRK pin. This feature offers the flexibility of setting the tracker output at a lower, equal to, or higher than OUT_LDO output voltage. Use the following equations to select new resistor values for R3–R6 to reconfigure the OUT_TRACK tracking voltage:

$$V_{ADJ} = \text{OUT_LDO} \left(\frac{R4}{R3 + R4} \right)$$

$$V_{FB_TRK} = V_{ADJ}$$

$$R5 = R6 \times \left(\frac{\text{OUT_TRK}}{V_{FB_TRK}} - 1 \right)$$

where OUT_LDO is the LDO output voltage, V_{ADJ} is the voltage setting at the ADJ pin, V_{FB_TRK} is the feedback voltage, which equals the voltage set at the ADJ pin, and OUT_TRK is the new tracking voltage. V_{ADJ} must be greater than 1.1V and less than TRACK - 0.5V. If installed, resistors R4 and R6 must be less than or equal to 50k Ω . V_{ADJ} can be set to 1.235V by installing a 0 Ω (0603 size) surface-mount resistor at R13. If the tracker output-voltage setting exceeds 35V, capacitor C6 must be replaced with a higher voltage-rated capacitor.

Voltage Tracker Enable

The voltage tracker can be enabled or disabled by configuring jumper JU3. See Table 2 for jumper JU3 configuration.

Table 2. Voltage Tracker (Jumper JU3)

SHUNT STATUS	EN_TRK PIN	VOLTAGE TRACKER
Installed	Connected to IN	Enabled
Not installed	Connected to ground SGND with internal pulldown	Disabled

Overvoltage Protector

The MAX15008 EV kit overvoltage protector is configured to operate in overvoltage switch mode. When the circuit detects an overvoltage condition at the IN2 input (or IN if IN2 is not separated from IN), the IC turns off n-channel MOSFET N1 to isolate the power source from the load. When the voltage at the IN2 input decreases below the overvoltage threshold, the MAX15008 turns on N1, reconnecting the power source to the load. The overvoltage threshold is configured to 17.7V by resistors R9 and R10. Use the following equation to select new resistor values to modify the overvoltage switch mode overvoltage threshold:

$$R9 = R10 \times \left(\frac{\text{OUT_PROTECT}}{1.235V} - 1 \right)$$

where R10 is typically 10k Ω and OUT_PROTECT is the desired overvoltage threshold.

The EV kit overvoltage protector can be reconfigured to operate in overvoltage-limiter mode by cutting open the shorting trace at resistor R15 and installing a 0 Ω resistor at R14. In this mode, when the circuit detects an overvoltage condition at the output load (OUT_PROTECT), the IC turns off N1 until the load lowers the OUT_PROTECT voltage below the overvoltage threshold. If the IN2 voltage is greater than the overvoltage threshold, the IC will attempt to regulate the OUT_PROTECT voltage around this threshold.

The overvoltage threshold for overvoltage-limiter mode operation is configured to 17.7V by resistors R7 and R8. Use the following equation to select new resistor values to modify the overvoltage-limiter mode overvoltage threshold:

$$R7 = R8 \times \left(\frac{\text{OUT_PROTECT}}{1.235V} - 1 \right)$$

where R8 is typically 10k Ω and OUT_PROTECT is the new overvoltage threshold. Exercise caution when operating the overvoltage protector in overvoltage-limiter mode. Refer to the *Overvoltage-Limiter Mode* section in the MAX15008/MAX15010 IC data sheet for details.

MAX15008 Evaluation Kit

Evaluates: MAX15008-MAX15011

Note: The overvoltage protector does not provide current-limiting protection. Verify that the IN2 input supply current is limited, according to the OUT_PROTECT load, and that the current ripple rating of capacitors C7 and C11, which is recommended for separate power operation, is not exceeded.

Overvoltage Protector Enable

The overvoltage protector can be enabled or disabled by configuring jumper JU4. See Table 3 for jumper JU4 configuration.

Table 3. Overvoltage Protector (Jumper JU4)

SHUNT STATUS	EN_PROT PIN	OVERVOLTAGE PROTECTOR
Installed	Connected to IN	Enabled
Not installed	Connected to ground SGND with internal pulldown	Disabled

RESET Timeout Period

The MAX15008 EV kit features output signal $\overline{\text{RESET}}$ for monitoring output OUT_LDO. The $\overline{\text{RESET}}$ output is asserted high (OUT_LDO voltage) when output OUT_LDO exceeds the voltage threshold of 92.5% of the programmed output voltage for the configured timeout period (t_{TIMEOUT}) of 93ms. Replacing capacitor C3 with a different value reconfigures the timeout period. Use the following equation to select a new capacitor value for C3 when adjusting the timeout period:

$$C3 = \frac{t_{\text{TIMEOUT}} \times 2\mu\text{A}}{1.235\text{V}}$$

where t_{TIMEOUT} is in seconds (s) and C3 is the new capacitor value in farads.

Evaluating the MAX15009, MAX15010, and MAX15011

The MAX15008 EV kit PCB can be used to evaluate the MAX15009, MAX15010, or MAX15011 ICs. Remove the MAX15008 IC (U1) and replace it with any of the three ICs. The MAX15010 IC integrates the same functions as the MAX15008 minus the overvoltage protector. The MAX15009 IC integrates an LDO, a switched output, and an overvoltage protector. The MAX15011 IC integrates the same functions as the MAX15009, minus the overvoltage protector. When evaluating the MAX15009 or MAX15011 ICs, components C8, C10, and R12 must be installed. Refer to the MAX15008/MAX15010 or the MAX15009/MAX15011 IC data sheets for a complete description of part-to-part differences and configuration.

When evaluating the MAX15010 or MAX15011, it is recommended either to cut the trace connecting the IN PCB pad to the IN2 PCB pad (drain of MOSFET N1), or to connect the gate of N1 to ground by installing a low-value (0603 size) resistor across the C9 PCB pads. Also, remove resistor R9 to prevent current leakage from the IN input.

MAX15008 Evaluation Kit

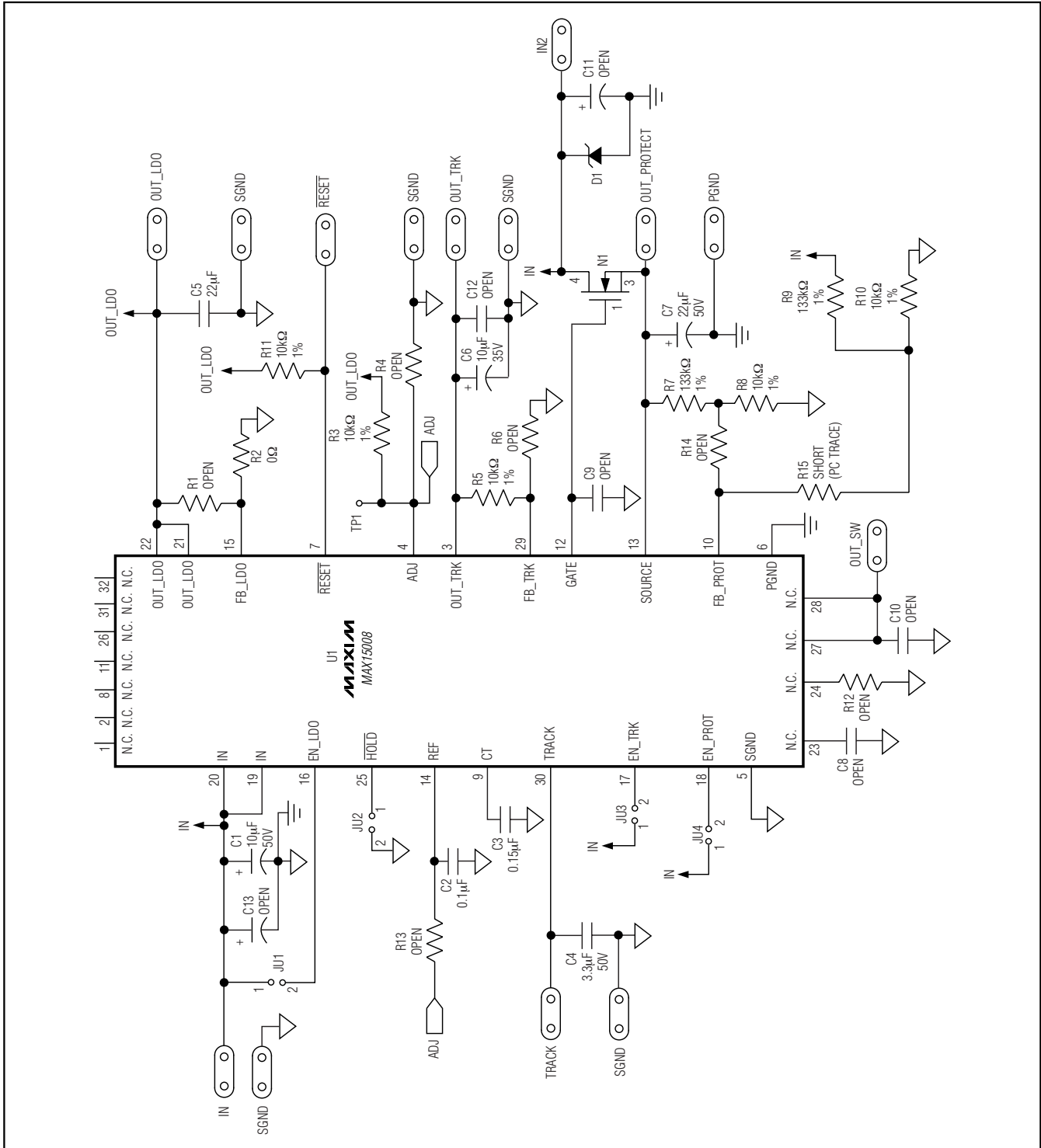


Figure 1. MAX15008 EV Kit Schematic

MAX15008 Evaluation Kit

Evaluates: MAX15008-MAX15011

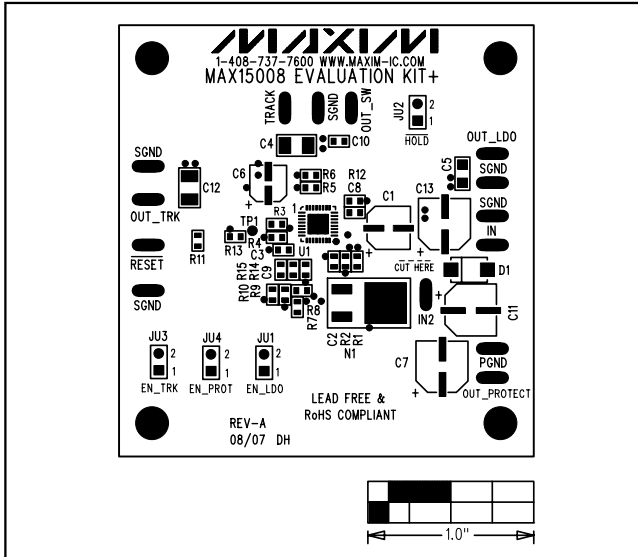


Figure 2. MAX15008 EV Kit Component Placement Guide—Component Side

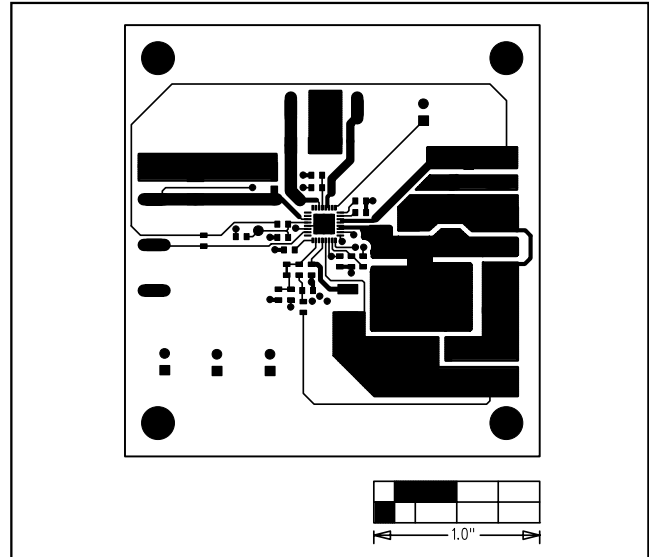


Figure 3. MAX15008 EV Kit PCB Layout—Component Side (Layer 1)

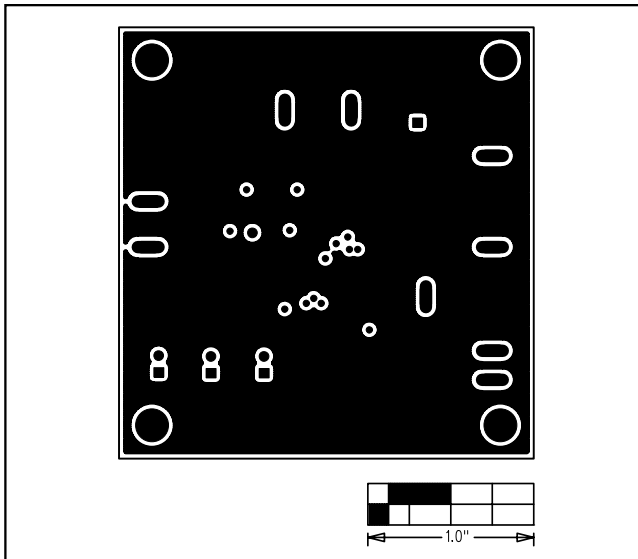


Figure 4. MAX15008 EV Kit PCB Layout—Ground Layer (Layer 2)

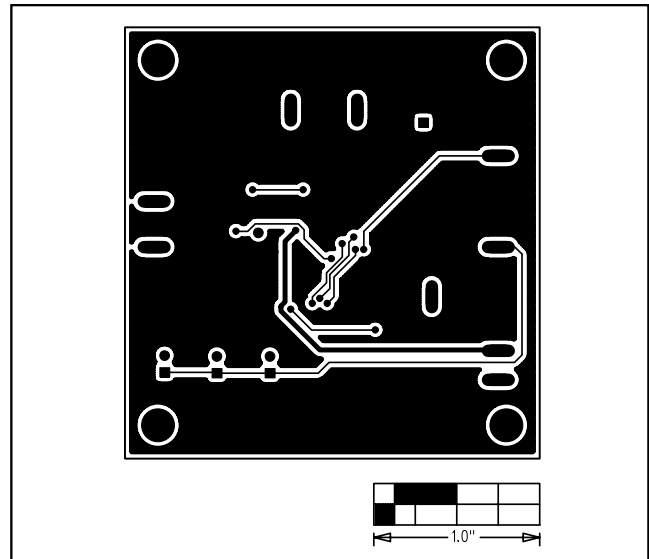


Figure 5. MAX15008 EV Kit PCB Layout—Ground and Signal Layer (Layer 3)

MAX15008 Evaluation Kit

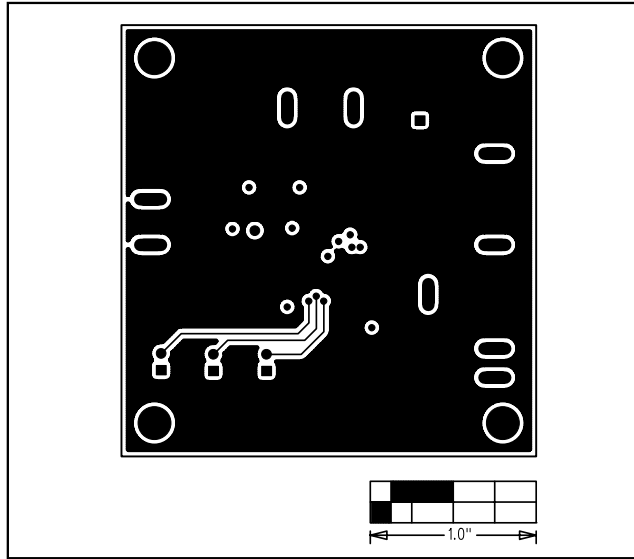


Figure 6. MAX15008 EV Kit PCB Layout—Solder Side (Layer 4)

Maxim cannot assume responsibility for use of any circuitry other than circuitry entirely embodied in a Maxim product. No circuit patent licenses are implied. Maxim reserves the right to change the circuitry and specifications without notice at any time.

8 _____ **Maxim Integrated Products, 120 San Gabriel Drive, Sunnyvale, CA 94086 408-737-7600**

© 2007 Maxim Integrated Products

MAXIM is a registered trademark of Maxim Integrated Products, Inc.



Компания «ЭлектроПласт» предлагает заключение долгосрочных отношений при поставках импортных электронных компонентов на взаимовыгодных условиях!

Наши преимущества:

- Оперативные поставки широкого спектра электронных компонентов отечественного и импортного производства напрямую от производителей и с крупнейших мировых складов;
- Поставка более 17-ти миллионов наименований электронных компонентов;
- Поставка сложных, дефицитных, либо снятых с производства позиций;
- Оперативные сроки поставки под заказ (от 5 рабочих дней);
- Экспресс доставка в любую точку России;
- Техническая поддержка проекта, помощь в подборе аналогов, поставка прототипов;
- Система менеджмента качества сертифицирована по Международному стандарту ISO 9001;
- Лицензия ФСБ на осуществление работ с использованием сведений, составляющих государственную тайну;
- Поставка специализированных компонентов (Xilinx, Altera, Analog Devices, Intersil, Interpoint, Microsemi, Aeroflex, Peregrine, Syfer, Eurofarad, Texas Instrument, Miteq, Cobham, E2V, MA-COM, Hittite, Mini-Circuits, General Dynamics и др.);

Помимо этого, одним из направлений компании «ЭлектроПласт» является направление «Источники питания». Мы предлагаем Вам помощь Конструкторского отдела:

- Подбор оптимального решения, техническое обоснование при выборе компонента;
- Подбор аналогов;
- Консультации по применению компонента;
- Поставка образцов и прототипов;
- Техническая поддержка проекта;
- Защита от снятия компонента с производства.



Как с нами связаться

Телефон: 8 (812) 309 58 32 (многоканальный)

Факс: 8 (812) 320-02-42

Электронная почта: org@eplast1.ru

Адрес: 198099, г. Санкт-Петербург, ул. Калинина, дом 2, корпус 4, литера А.