

# AT, ATM and ATP Series™ Kits Are Now Available!!!



**Q:** Why are we offering "kits"?

**A:** Making "kits" available to our customers allows for reducing the number of part numbers necessary for any given project, whether for in-house production or field-serviceable applications.

Amphenol's **A Series™ Connectors**, which contain **AT**, **ATM** and **ATP** series, encompass a wide range of products serving a variety of industries. All series are compatible with existing standard products industry-wide. Our kits are perfect for dealers and service shops, and as an aftermarket components option. With Production and Field Service kit availability, you have the ability to make repairs both on-the-line as well as in-the-field with confidence.

**Market Applications:** Heavy Duty, Transportation, Marine, Diagnostic, Military, Alternative Energy and Agricultural Industries

## AT Series™

2, 3, 4, 6, 8 and 12 positions available

- Contacts: Size 16, (13A), 16-18AWG, Stamped & Formed
- High-performance, cost-effective
- Superior environmental seal retention



## ATM Series™

2, 3, 4, 6, 8 and 12 positions available

- Contacts: Size 20, (7.5A), 16-22AWG, Stamped & Formed
- High-performance, cost-effective
- Superior environmental seal retention



## ATP Series™

2 and 4 position available

- Contacts: Size 12, (25A), 12-14AWG, Stamped & Formed
- High-performance, cost-effective
- Superior environmental seal retention



Part/Kit Availability for AT, ATM And ATP Series

Series	Amphenol Sine Systems P/N	Contents of Kit
AT	AT06-2S-KIT01	2 pos., Plug, Female, Wedgelock, Contacts
	AT06-3S-KIT01	3 pos., Plug, Female, Wedgelock, Contacts
	AT06-4S-KIT01	4 pos., Plug, Female, Wedgelock, Contacts
	AT06-6S-KIT01	6 pos., Plug, Female, Wedgelock, Contacts
	AT06-08SA-KIT01	8 pos., Plug, Female, Wedgelock, Contacts
	AT06-12SA-KIT01	12 pos., Plug, Female, Wedgelock, Contacts
	AT04-2P-KIT01	2 pos., Receptacle, Male, Wedgelock, Contacts
	AT04-3P-KIT01	3 pos., Receptacle, Male, Wedgelock, Contacts
	AT04-4P-KIT01	4 pos., Receptacle, Male, Wedgelock, Contacts
	AT04-6P-KIT01	6 pos., Receptacle, Male, Wedgelock, Contacts
	AT04-08PA-KIT01	8 pos., Receptacle, Male, Wedgelock, Contacts
	AT04-12PA-KIT01	12 pos., Receptacle, Male, Wedgelock, Contacts
	AT2PS-CKIT	2 pos., Plug, Receptacle, Pins, Sockets, Wedges
	AT3PS-CKIT	3 pos., Plug, Receptacle, Pins, Sockets, Wedges
	AT4PS-CKIT	4 pos., Plug, Receptacle, Pins, Sockets, Wedges
	AT6PS-CKIT	6 pos., Plug, Receptacle, Pins, Sockets, Wedges
	AT8PS-CKIT	8 pos., Plug, Receptacle, Pins, Sockets, Wedges
	AT12PS-CKIT	12 pos., Plug, Receptacle, Pins, Sockets, Wedges
	AT60-202-16NKIT	AT60-202-16141 Pin Contact, Nickel
	AT60-204-12NKIT	AT60-204-12141 Pin Contact, Nickel (ATP Kit compatible)
AT60-202-20NKIT	AT60-202-20141 Pin Contact, Nickel (ATM Kit compatible)	
AT62-201-16NKIT	AT62-201-16141 Socket Contact, Nickel	
AT62-203-12NKIT	AT62-203-12141 Socket Contact, Nickel (ATP Kit compatible)	
AT62-201-20NKIT	AT62-201-20141 Socket Contact, Nickel (ATM Kit compatible)	

Series	Amphenol Sine Systems P/N	Contents of Kit
ATM	ATM06-2S-KIT01	2 pos., Plug, Female, Wedgelock, Contacts
	ATM06-3S-KIT01	3 pos., Plug, Female, Wedgelock, Contacts
	ATM06-4S-KIT01	4 pos., Plug, Female, Wedgelock, Contacts
	ATM06-6S-KIT01	6 pos., Plug, Female, Wedgelock, Contacts
	ATM06-08SA-KT01	8 pos., Plug, Female, Wedgelock, Contacts
	ATM06-12SA-KT01	12 pos., Plug, Female, Wedgelock, Contacts
	ATM04-2P-KIT01	2 pos., Receptacle, Male, Wedgelock, Contacts
	ATM04-3P-KIT01	3 pos., Receptacle, Male, Wedgelock, Contacts
	ATM04-4P-KIT01	4 pos., Receptacle, Male, Wedgelock, Contacts
	ATM04-6P-KIT01	6 pos., Receptacle, Male, Wedgelock, Contacts
	ATM04-08PA-KT01	8 pos., Receptacle, Male, Wedgelock, Contacts
	ATM04-12PA-KT01	12 pos., Receptacle, Male, Wedgelock, Contacts
	ATM2PS-CKIT	2 pos., Plug, Receptacle, Pins, Sockets, Wedges
	ATM3PS-CKIT	3 pos., Plug, Receptacle, Pins, Sockets, Wedges
	ATM4PS-CKIT	4 pos., Plug, Receptacle, Pins, Sockets, Wedges
	ATM6PS-CKIT	6 pos., Plug, Receptacle, Pins, Sockets, Wedges
ATM8PS-CKIT	8 pos., Plug, Receptacle, Pins, Sockets, Wedges	
ATM12PS-CKIT	12 pos., Plug, Receptacle, Pins, Sockets, Wedges	
ATP	ATP06-2S-KIT01	2 pos., Plug, Female, Wedgelock, Contacts
	ATP06-4S-KIT01	4 pos., Plug, Female, Wedgelock, Contacts
	ATP04-2P-KIT01	2 pos., Receptacle, Male, Wedgelock, Contacts
	ATP04-4P-KIT01	4 pos., Receptacle, Male, Wedgelock, Contacts
	ATP2PS-CKIT	2 pos., Plug, Receptacle, Pins, Sockets, Wedges
	ATP4PS-CKIT	4 pos., Plug, Receptacle, Pins, Sockets, Wedges

**For more information, contact:**

Richard Zaleuke, NA Distribution Manager | Phone: +1 314 974 0501 | rzaleuke@sineco.com

# RT360™ Kits Are Now Available!!!



**Q:** Why are we offering "kits"?

**A:** Making "kits" available to our customers allows for reducing the number of part numbers necessary for any given project, whether for in-house production or field-serviceable applications.

Amphenol's **RT360™ Industrial Circular Connectors** are multiway connector available in 6 shell sizes and 22 insert arrangements with a variety of wire gauge options. RT360™ industrial circular connectors are designed to be intermateable with other industry standard connectors, such as the **Souriau TRIM TRIO UTG and UTP** industrial connector families and **Cannon Trident** series. All connectors are RoHS compliant.

**Market Applications:** Factory Automation & Control, Robotics, Railway & Mass Transit, Renewable Energy, Machine Tool and Power Generation.

## RT Series™

- 6 shell sizes/6 insert configurations
- Insert arrangements from 4-23 contacts
- Operating voltage of 300V
- Current rating: 13A(signal contacts)
- Alternate keying positions available
- Plastic inserts with flammability rating of UL94-VO

## RTOW Series™

- 6 shell sizes/5 insert configurations
- Mates with MIL-C-24682 connectors
- HD arrangements from 6-32 contacts
- Operating voltage of 150V
- Current rating: 7.5A (machined contacts); 5A (stamped and formed contacts)
- Alternate keying positions available
- Plastic inserts with flammability rating of UL94-VO



Part/Kit Availability for RT360™ Series

Series	Amphenol Sine Systems P/N	Contents of Kit
RT	RT06104PNH-K	Plug, Pin , 16AWG, 4 pin
	RT06123PNH-K	Plug, Pin , 16AWG, 3 pin
	RT06128PNH-K	Plug, Pin , 16AWG, 8 pin
	RT061412PNH-K	Plug, Pin , 16AWG, 12 pin
	RT061619PNH-K	Plug, Pin , 16AWG, 19 pin
	RT061823PNH-K	Plug, Pin , 16AWG, 23 pin
	RT06104SNH-K	Plug, Socket , 16AWG, 4 pin
	RT06123SNH-K	Plug, Socket , 16AWG, 3 pin
	RT06128SNH-K	Plug, Socket , 16AWG, 8 pin
	RT061412SNH-K	Plug, Socket , 16AWG, 12 pin
	RT061619SNH-K	Plug, Socket , 16AWG, 19 pin
	RT061823SNH-K	Plug, Socket , 16AWG, 23 pin
	RT00104PNH-K	Wall Mtg Recpt, Pin , 16AWG, 4 pin
	RT00123PNH-K	Wall Mtg Recpt, Pin , 16AWG, 3 pin
	RT00128PNH-K	Wall Mtg Recpt, Pin , 16AWG, 8 pin
	RT001412PNH-K	Wall Mtg Recpt, Pin , 16AWG, 12 pin
	RT001619PNH-K	Wall Mtg Recpt, Pin , 16AWG, 19 pin
	RT001823PNH-K	Wall Mtg Recpt, Pin , 16AWG, 23 pin
	RT00104SNH-K	Wall Mtg Recpt, Socket , 16AWG, 4 pin
	RT00123SNH-K	Wall Mtg Recpt, Socket , 16AWG, 3 pin
	RT00128SNH-K	Wall Mtg Recpt, Socket , 16AWG, 8 pin
	RT001412SNH-K	Wall Mtg Recpt, Socket , 16AWG, 12 pin
	RT001619SNH-K	Wall Mtg Recpt, Socket , 16AWG, 19 pin
	RT001823SNH-K	Wall Mtg Recpt, Socket , 16AWG, 23 pin
	RT07104PNH-K	Jam Nut Recpt, Pin , 16AWG, 4 pin
	RT07123PNH-K	Jam Nut Recpt, Pin , 16AWG, 3 pin
	RT07128PNH-K	Jam Nut Recpt, Pin , 16AWG, 8 pin
	RT071412PNH-K	Jam Nut Recpt, Pin , 16AWG, 12 pin
	RT071619PNH-K	Jam Nut Recpt, Pin , 16AWG, 19 pin
	RT071823PNH-K	Jam Nut Recpt, Pin , 16AWG, 23 pin
	RT07104SNH-K	Jam Nut Recpt, Socket , 16AWG, 4 pin
	RT07123SNH-K	Jam Nut Recpt, Socket , 16AWG, 3 pin
	RT07128SNH-K	Jam Nut Recpt, Socket , 16AWG, 8 pin
	RT071412SNH-K	Jam Nut Recpt, Socket , 16AWG, 12 pin
	RT071619SNH-K	Jam Nut Recpt, Socket , 16AWG, 19 pin
	RT071823SNH-K	Jam Nut Recpt, Socket , 16AWG, 23 pin

Series	Amphenol Sine Systems P/N	Contents of Kit
RTOW	RTOW6106PNH-K	Plug, Pin , 20AWG, 6 Pin
	RTOW61210PNH-K	Plug, Pin , 20AWG, 10 Pin
	RTOW61419PNH-K	Plug, Pin , 20AWG, 19 Pin
	RTOW61626PNH-K	Plug, Pin , 20AWG, 26 Pin
	RTOW61832PNH-K	Plug, Pin , 20AWG, 32 Pin
	RTOW6106SNH-K	Plug, Socket , 20AWG, 6 Pin
	RTOW61210SNH-K	Plug, Socket , 20AWG, 10 Pin
	RTOW61419SNH-K	Plug, Socket , 20AWG, 19 Pin
	RTOW61626SNH-K	Plug, Socket , 20AWG, 26 Pin
	RTOW61832SNH-K	Plug, Socket , 20AWG, 32 Pin
	RTOW0106PNH-K	Wall Mtg Recpt, Pin , 20AWG, 6 Pin
	RTOW01210PNH-K	Wall Mtg Recpt, Pin , 20AWG, 10 Pin
	RTOW01419PNH-K	Wall Mtg Recpt, Pin , 20AWG, 19 Pin
	RTOW01626PNH-K	Wall Mtg Recpt, Pin , 20AWG, 26 Pin
	RTOW01832PNH-K	Wall Mtg Recpt, Pin , 20AWG, 32 Pin
	RTOW0106SNH-K	Wall Mtg Recpt, Socket , 20AWG, 6 Pin
	RTOW01210SNH-K	Wall Mtg Recpt, Socket , 20AWG, 10 Pin
	RTOW01419SNH-K	Wall Mtg Recpt, Socket , 20AWG, 19 Pin
	RTOW01626SNH-K	Wall Mtg Recpt, Socket , 20AWG, 26 Pin
	RTOW01832SNH-K	Wall Mtg Recpt, Socket , 20AWG, 32 Pin
	RTOW7106PNH-K	Jam Nut Recpt, Pin , 20AWG, 6 Pin
	RTOW71210PNH-K	Jam Nut Recpt, Pin , 20AWG, 10 Pin
	RTOW71419PNH-K	Jam Nut Recpt, Pin , 20AWG, 19 Pin
	RTOW71626PNH-K	Jam Nut Recpt, Pin , 20AWG, 26 Pin
	RTOW71832PNH-K	Jam Nut Recpt, Pin , 20AWG, 32 Pin
	RTOW7106SNH-K	Jam Nut Recpt, Socket , 20AWG, 6 Pin
	RTOW71210SNH-K	Jam Nut Recpt, Socket , 20AWG, 10 Pin
	RTOW71419SNH-K	Jam Nut Recpt, Socket , 20AWG, 19 Pin
	RTOW71626SNH-K	Jam Nut Recpt, Socket , 20AWG, 26 Pin
	RTOW71832SNH-K	Jam Nut Recpt, Socket , 20AWG, 32 Pin

Acc.	QXRT20	Extraction Tool, 20Awg
	QXRT16	Extraction Tool, 16Awg
	MP20W23F-10	20Awg, Pin Contact, 10 Piece Bag
	MS20W23F-10	20Awg, Socket Contact, 10 Piece Bag
	MP16M23F-10	16Awg, Pin Contact, 10 Piece Bag
	MS16M23S-10	16Awg, Socket Contact, 10 Piece Bag

**For more information, contact:**

Richard Zaleuke, NA Distribution Manager | Phone: +1 314 974 0501 | rzaleuke@sineco.com



# MotionGrade™ M23 Kits Are Now Available!!!



**Q:** Why are we offering "kits"?

**A:** Making "kits" available to our customers allows for reducing the number of part numbers necessary for any given project, whether for in-house production or field-serviceable applications.

Amphenol's **MotionGrade™ M23 Connectors** are designed to excel in performance and reliability in our customers' most demanding environments where control signal transmission or power are required in a robust and compact system. Our innovations and experience as an industry leader in connector technology and total interconnect solutions allow us to offer such features as our FlexGrip™ Backshell System and custom machined contacts. These and other features combined with a simplistic design approach reduce initial procurement and assembly cost, while ensuring compatibility to all other existing standard layouts.

**Market Applications:** Advanced Servo Drive Encoder Feedback, Packaging, Robotics, Printing, Machine Tool, Medical and Automation environments.

## Specifications

- Temperature Range: -20 - +130°C
- Max. Current (AMP): 15A (2.0mm); 10A (1.0mm)
- Voltage Rating (AC/DC): 630V
- Contact Resistance: < 3m Ω
- Min. Mating Cycles: 50
- Test Voltage Rating: 6000V
- Sealing Protection: IP66/67 (plugged condition)
- Protective Grounding: Per VDE 0627
- Safety Protection: Per VDE 0623
- Strain Relief Clamp Range: 7.5-11mm
- Housing Body: Zinc, Die-cast
- Insulation Inserts: PA66, UL94/V0
- Contacts: Brass, Gold-plated
- Sealing Material: DuPont Viton®



## Part/Kit Availability for MotionGrade™ M23 Connectors

Series	Amphenol Sine Systems P/N	Contents of Kit
A	MA1CAE1200-KIT	12 pos., Plug, Female, E type, CW(Clockwise Rotation), Straight
	MA1CAP1200-KIT	12 pos., Plug, Female, P type, CCW(Counter-clockwise Rotation), Straight
	MA1CAE1700-KIT	17 pos., Plug, Female, E type, CW(Clockwise Rotation), Straight
	MA1CAP1700-KIT	17 pos., Plug, Female, P type, CCW(Counter-clockwise Rotation), Straight
	MA1LAE1200-KIT	12 pos., Receptacle, Male, E type, CW(Clockwise Rotation), Straight
	MA1LAP1200-KIT	12 pos., Receptacle, Male, P type, CCW(Counter-clockwise Rotation), Straight
	MA1LAE1700-KIT	17 pos., Receptacle, Male, E type, CW(Clockwise Rotation), Straight
	MA1LAP1700-KIT	17 pos., Receptacle, Male, P type, CCW(Counter-clockwise Rotation), Straight
B	MB1CKN0600-KIT	6 pos., Plug, Female, HC Crimp, Short housing
	MB1CKN0800-KIT	8 pos., Plug, Female, HC Crimp, Short housing
	MB1CKN0900-KIT	9 pos., Plug, Female, HC Crimp, Short housing
	MB1LLN0600-KIT	6 pos., Receptacle, Male, Crimp, Long straight
	MB1LLN0800-KIT	8pos., Receptacle, Male, Crimp, Long straight
	MB1LLN0900-KIT	9 pos., Receptacle, Male, Crimp, Long straight

**For more information, contact:**

Richard Zaleuke, NA Distribution Manager | Phone: +1 314 974 0501 | rzaleuke@sineco.com

# Heavy | Mate® Kits Are Now Available!!!



**Q:** Why are we offering "kits"?

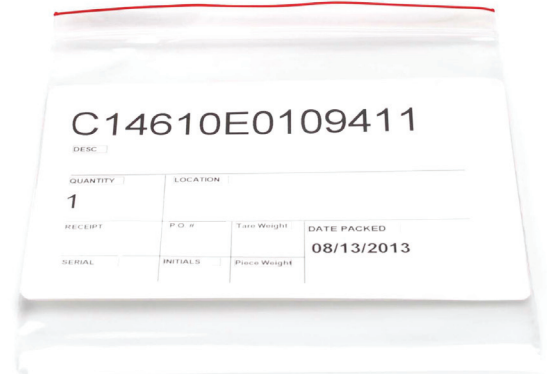
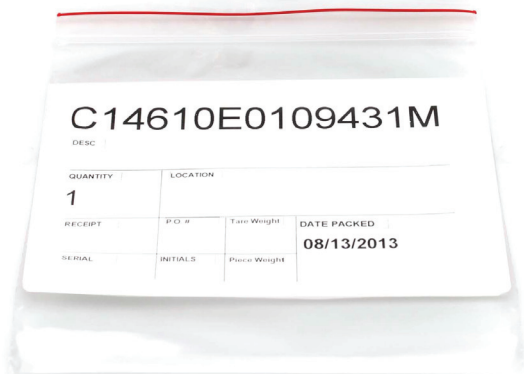
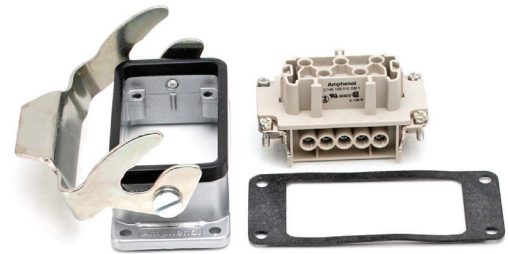
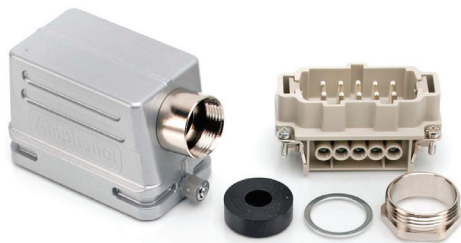
**A:** Making "kits" available to our customers allows for reducing the number of part numbers necessary for any given project, whether for in-house production or field-serviceable applications.

Amphenol's HeavyMate® Heavy Duty Connectors provide a robust design necessary for harsh industrial environments. They have a wide range of inserts for signal and power transmission and a large variety in pole sizes from 6 to 24 poles per connector. The HeavyMate® Connectors utilize Radsok® contact technology which correspond to the market standard and are suitable for high current applications with very low transition resistance.

**Market Applications:** Perfect for all Harsh Industrial Environments.

## Why Heavy|Mate?

- Robust design
- Very good EMC protection
- Power and signal transmission
- Secure locking system
- IP65
- Corrosion resistance
- Vibration proof
- VDE, UL, CSA approvals



Part/Kit Availability for Heavy | Mate®

Part	Amphenol Sine Systems P/N	Contents of Kit
Plug	C14610E0069431M	6 Pole Plug, Single Latch, Side Entry Low, M25
	C14610E0069441M	6 Pole Plug, Single Latch, Top Entry Low, M25
	C14610E0069458M	6 Pole Plug, Single Latch, Side Entry High, M32
	C14610E0069468M	6 Pole Plug, Single Latch, Top Entry High, M32
	C14610E0109431M	10 Pole Plug, Single Latch, Side Entry Low, M25
	C14610E0109441M	10 Pole Plug, Single Latch, Top Entry Low, M25
	C14610E0109451M	10 Pole Plug, Single Latch, Side Entry High, M32
	C14610E0109461M	10 Pole Plug, Single Latch, Top Entry High, M32
	C14610E0169431M	16 Pole Plug, Single Latch, Side Entry Low, M32
	C14610E0169441M	16 Pole Plug, Single Latch, Top Entry Low, M32
	C14610E0249438M	24 Pole Plug, Dual Latch, Side Entry High, M32
	C14610E0249448M	24 Pole Plug, Dual Latch, Top Entry High, M32
	C14610E0249451M	24 Pole Plug, Dual Latch, Side Entry Low, M32
	C14610E0249461M	24 Pole Plug, Dual Latch, Top Entry Low, M32
	C14610E0249478M	24 Pole Plug, Single Latch, Side Entry High, M32
	C14610E0249488M	24 Pole Plug, Single Latch, Top Entry High, M32

part	Amphenol Sine Systems P/N	Contents of Kit	
Plug, cont.	C14610E0249491M	24 Pole Plug, Single Latch, Side Entry Low, M32	
	C14610E0249501M	24 Pole Plug, Single Latch, Top Entry Low, M32	
	C14610E0249518M	24 Pole Plug, Dual Latch, Side Entry High, M40	
	C14610E0249528M	24 Pole Plug, Dual Latch, Top Entry High, M40	
	C14610E0249551M	24 Pole Plug, Single Latch, Side Entry High, M40	
	C14610E0249568M	24 Pole Plug, Single Latch, Top Entry High, M40	
	Recpt.	C14610E0069401	6 Pole Recpt., Single Latch
		C14610E0069421	6 Pole Recpt., Single Latch, Spring Cover
C14610E0109411		10 Pole Recpt., Single Latch	
C14610E0109421		10 Pole Recpt., Single Latch, Spring Cover	
C14610E0169411		16 Pole Recpt., Single Latch	
C14610E0169421		16 Pole Recpt., Single Latch, Spring Cover	
C14610E0249401		24 Pole Recpt., Dual Latch	
C14610E0249411		24 Pole Recpt., Single Latch	
C14610E0249421		24 Pole Recpt., Single Latch, Spring Cover	

**For more information, contact:**

Richard Zaleuke, NA Distribution Manager | Phone: +1 314 974 0501 | rzaleuke@sineco.com





Компания «ЭлектроПласт» предлагает заключение долгосрочных отношений при поставках импортных электронных компонентов на взаимовыгодных условиях!

Наши преимущества:

- Оперативные поставки широкого спектра электронных компонентов отечественного и импортного производства напрямую от производителей и с крупнейших мировых складов;
- Поставка более 17-ти миллионов наименований электронных компонентов;
- Поставка сложных, дефицитных, либо снятых с производства позиций;
- Оперативные сроки поставки под заказ (от 5 рабочих дней);
- Экспресс доставка в любую точку России;
- Техническая поддержка проекта, помощь в подборе аналогов, поставка прототипов;
- Система менеджмента качества сертифицирована по Международному стандарту ISO 9001;
- Лицензия ФСБ на осуществление работ с использованием сведений, составляющих государственную тайну;
- Поставка специализированных компонентов (Xilinx, Altera, Analog Devices, Intersil, Interpoint, Microsemi, Aeroflex, Peregrine, Syfer, Eurofarad, Texas Instrument, Miteq, Cobham, E2V, MA-COM, Hittite, Mini-Circuits, General Dynamics и др.);

Помимо этого, одним из направлений компании «ЭлектроПласт» является направление «Источники питания». Мы предлагаем Вам помощь Конструкторского отдела:

- Подбор оптимального решения, техническое обоснование при выборе компонента;
- Подбор аналогов;
- Консультации по применению компонента;
- Поставка образцов и прототипов;
- Техническая поддержка проекта;
- Защита от снятия компонента с производства.



#### Как с нами связаться

**Телефон:** 8 (812) 309 58 32 (многоканальный)

**Факс:** 8 (812) 320-02-42

**Электронная почта:** [org@eplast1.ru](mailto:org@eplast1.ru)

**Адрес:** 198099, г. Санкт-Петербург, ул. Калинина, дом 2, корпус 4, литера А.