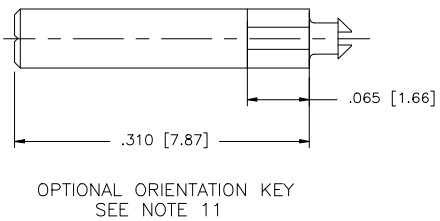
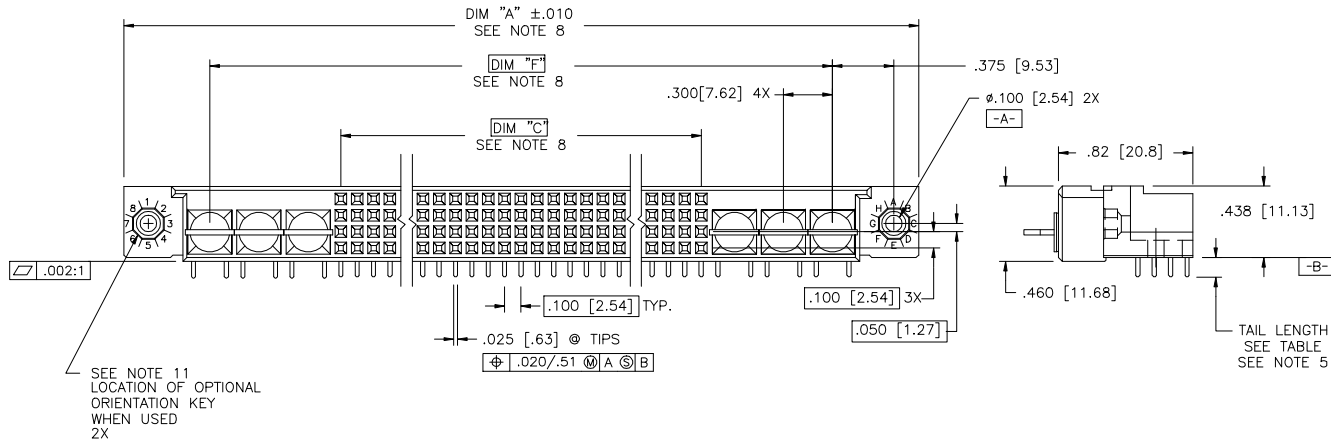
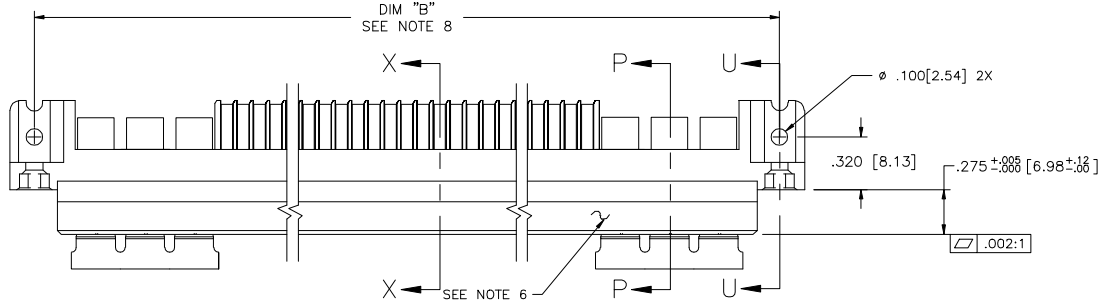


PRODUCT NUMBER  
SEE NOTE 1



|             |          |         |         |         |                                       |                       |         |                                  |  |
|-------------|----------|---------|---------|---------|---------------------------------------|-----------------------|---------|----------------------------------|--|
| mal't. code |          | NOTE 3  |         | surface | ISO 1302                              | tolerance             | ISO 406 | projection                       | product family   |
| ltr         |          | ec'n no | dr      | date    | tolerances unless otherwise specified |                       |         | <br>INCH/MM                      | HPC  |
| B           | v30297   | JM      | 2/9/93  |         | angles                                | .XX ±.01/XX±0.3       |         |                                  | title<br>4 ROW R/A RECEPTACLE<br>SOLDER TAIL, 0 G.P., 6 P.P. |
| C           | v40243   | PDP     | 1/13/94 |         | linear                                | .XXX ±.005/XXX±0.13   |         | scale 1:1                        |  |
| D           | v90135   | DLW     | 4/5/99  |         | σ±2                                   | .XXX ±.0020/XXX±0.051 |         |                                  |  |
| E           | v00256   | LSS     | 1/13/00 | dr      | D. SHEAFFER                           | 9/15/92               |         | sheet 1 of 3<br>size<br>A3       |  |
| F           | v05-0737 | DAI     | 9/21/05 | engr    | S. CLARK                              | 9/15/92               |         | type<br>Product Customer Drawing |  |
| G           | M08-0280 | AGS     | 9/30/08 | chr     | S. CLARK                              | 9/15/92               |         |                                  |  |
|             |          |         |         | appd    | S. CLARK                              | 9/15/92               |         |                                  |  |
| sheet       | revision | C       | C       | C       |                                       |                       |         |                                  |  |
| index       | sheet    | 1       | 2       | 3       |                                       |                       |         |                                  |  |

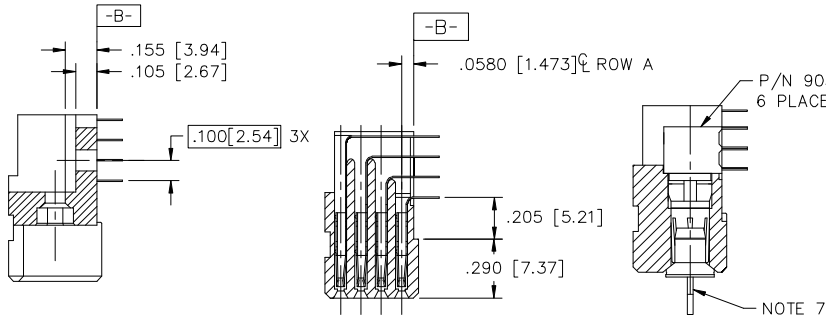
PRODUCT NUMBER  
SEE NOTE 1

NOTES:

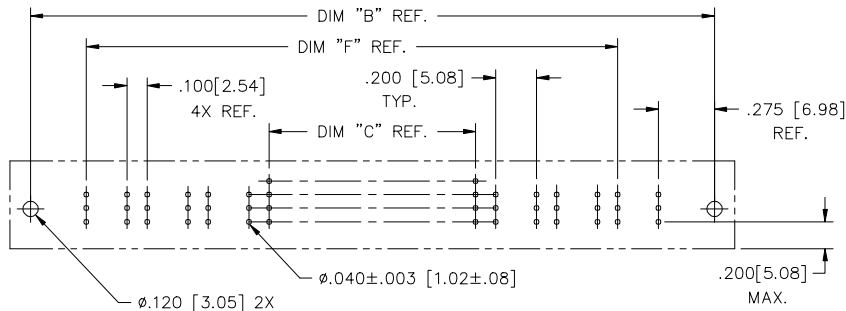
- ①. PRODUCT NUMBERING CODE:  
50565 - X YYY Z LF  
LEAD FREE (OPTIONAL)  
TAIL LENGTH SEE TABLE, SEE NOTE 5  
NO. OF POSITIONS SEE NOTE 2  
PLATING SEE NOTE 4  
BASE NUMBER

- PRODUCT NUMBERING CODE FOR  
SELECT LOAD PART NUMBERS:  
50565 - XYYYY LF  
LEAD FREE (OPTIONAL)  
SEQUENCE NUMBER  
ALWAYS 'XX'  
BASE NUMBER

- ②. THIS PRODUCT IS CONFIGURED IN SIZES OF  
6 THRU 80 COLUMNS IN INCREMENTS OF ONE.  
i.e.: 6,7,8,9.....79,80.
- ③. HOUSING MATERIAL: GLASS AND MINERAL FILLED  
HI-TEMP THERMOPLASTIC, FLAME RETARDANT  
PER UL94V-0 COLOR: BLANK  
CONTACT MATERIAL: BeCu
4. PLATING:  
SEE TABLE FOR CONTACT AREA AND SOLDER TAIL PLATING  
OF SIGNAL LINES.  
POWER CONTACTS ARE PLATED WITH  $30\mu\text{m}/.76\mu\text{m}$  MIN Au OR GXT,  
OR  $50\mu\text{m}/1.27\mu\text{m}$  MIN Ni IN CONTACT AREA AND HAVE THE  
SAME TAIL PLATING AS THE SIGNAL CONTACTS FOR  
CORRESPONDING PRODUCT NUMBER.
5. TAIL LENGTHS: ALL POWER TAILS ARE 1.45/3.68  
SEE TABLE FOR SIGNAL TAIL LENGTHS
- ⑥. MANUFACTURERS NAME, PART NUMBER AND LOT CODE  
TO APPEAR ON THIS SURFACE PER BUS-12-108.
- ⑦. POWER SOCKET LOCATOR (P/N 50233) TO BE REMOVED  
AFTER SOLDERING OPERATION.
- ⑧. LENGTH FORMULAS:  
DIM A =  $100/2.54 \times \text{NO. OF COLUMNS} + 2.55/64.8$   
DIM B =  $100/2.54 \times \text{NO. OF COLUMNS} + 2.250/57.15$   
DIM C =  $100/2.54 \times \text{NO. OF COLUMNS} - .100/2.54$   
DIM F =  $100/2.54 \times \text{NO. OF COLUMNS} + 1.500/38.10$
9. THE PRODUCTS (WITH "LF" SUFFIX) MEET EUROPEAN UNION DIRECTIVES  
AND OTHER COUNTRY REGULATIONS AS DESCRIBED IN GS-22-008.
10. THIS HOUSING WILL WITHSTAND EXPOSURE TO 260° C PEAK  
TEMPERATURE FOR 10-30 SECONDS IN A CONVECTION, INFRA-RED,  
VAPOR PHASE REFLOW OVEN.
- ⑪. WHERE APPLICABLE, THE OPTIONAL ORIENTATION KEYS ARE BAGGED  
SEPERATELY AND INCLUDED IN THE SAME BOX WITH THE  
CONNECTORS.
- ⑫. PLATING OPTION:  
MAY BE EITHER GOLD OR GXT PLATED AT MANUFACTURER'S OPTION.



SECTION U-U      SECTION X-X      SECTION P-P



RECOMMENDED PCB LAYOUT  
(ALL HOLES LOCATED ON .100 [2.54] GRID  
UNLESS OTHERWISE SPECIFIED)

|             |          |         |          |                                       |             |             |   |
|-------------|----------|---------|----------|---------------------------------------|-------------|-------------|---|
| mat'l. code | NOTE 3   | surface | ISO 1902 | tolerance                             | ISO 406     | projection  | product family  |
| ltr         | ecp no   | dr      | date     | tolerances unless otherwise specified |             | <br>INCH/MM | HPC   |
| G           |          |         |          | angles                                | linear      |             | .XX ±.01/XX±0.3<br>.XXX ±.005/XXX±0.13<br>.XXX ±.0020/XXX±0.051 |
|             |          |         |          | dr                                    | D. SHEAFFER | 9/15/92     | scale 1:1<br>dwg no<br>50565<br>sheet 2 of 3<br>size<br>A3      |
|             |          |         |          | engr                                  | S. CLARK    | 9/15/92     | <br>type<br>Product Customer Drawing                            |
|             |          |         |          | chr                                   | S. CLARK    | 9/15/92     |   |
|             |          |         |          | appd                                  | S. CLARK    | 9/15/92     |   |
| sheet       | revision |         |          |                                       |             |             |   |
| index       | sheet    |         |          |                                       |             |             |   |

| PRODUCT NUMBER  | NUMBER OF POSITIONS<br>SEE NOTE 2 | OPTIONAL ORIENTATION KEY<br>SEE NOTE 11 | TAIL LENGTH OF SIGNAL TAILS | SOLDER TAIL PLATING | CONTACT AREA PLATING<br>SEE NOTE 4 & 11 |
|-----------------|-----------------------------------|---|-----------------------------|---------------------|---|
| 50565 -1YYYYE   | YYY                               | -                                       | .125±.010/3.18±0.25         | TIN-LEAD            | 30μ"/0.76μ GOLD                         |
| 50565 -1YYYYF   | YYY                               | -                                       | .145±.010/3.68±0.25         | TIN-LEAD            | 30μ"/0.76μ GOLD                         |
| 50565 -1YYYYH   | YYY                               | -                                       | .180±.010/4.57±0.25         | TIN-LEAD            | 30μ"/0.76μ GOLD                         |
| 50565 -3YYYYE   | YYY                               | -                                       | .125±.010/3.18±0.25         | TIN-LEAD            | 50μ"/1.27μ GOLD                         |
| 50565 -3YYYYF   | YYY                               | -                                       | .145±.010/3.68±0.25         | TIN-LEAD            | 50μ"/1.27μ GOLD                         |
| 50565 -3YYYYH   | YYY                               | -                                       | .180±.010/4.57±0.25         | TIN-LEAD            | 50μ"/1.27μ GOLD                         |
| 50565 -5YYYYE   | YYY                               | -                                       | .125±.010/3.18±0.25         | TIN-LEAD            | 30μ"/0.76μ GXT                          |
| 50565 -5YYYYELF | YYY                               | -                                       | .125±.010/3.18±0.25         | TIN                 | 30μ"/0.76μ GXT                          |
| 50565 -5YYYYF   | YYY                               | -                                       | .145±.010/3.68±0.25         | TIN-LEAD            | 30μ"/0.76μ GXT                          |
| 50565 -5YYYYFLF | YYY                               | -                                       | .145±.010/3.68±0.25         | TIN                 | 30μ"/0.76μ GXT                          |
| 50565 -5YYYYH   | YYY                               | -                                       | .180±.010/4.57±0.25         | TIN-LEAD            | 30μ"/0.76μ GXT                          |
| 50565 -5YYYYHLF | YYY                               | -                                       | .180±.010/4.57±0.25         | TIN                 | 30μ"/0.76μ GXT                          |
| 50565 -XX006    | 60                                | YES                                     | .125±.010/3.18±0.25         | TIN-LEAD            | 30μ"/0.76μ GOLD                         |
| 50565 -XX006LF  | 60                                | YES                                     | .125±.010/3.18±0.25         | TIN                 | 30μ"/0.76μ GXT                          |
| 50565 -XX006A   | 60                                | -                                       | .125±.010/3.18±0.25         | TIN-LEAD            | 30μ"/0.76μ GOLD                         |
| 50565 -XX006ALF | 60                                | -                                       | .125±.010/3.18±0.25         | TIN                 | 30μ"/0.76μ GXT                          |
| 50565 -XX007    | 60                                | YES                                     | .125±.010/3.18±0.25         | TIN-LEAD            | 30μ"/0.76μ GOLD                         |
| 50565 -XX007LF  | 60                                | YES                                     | .125±.010/3.18±0.25         | TIN                 | 30μ"/0.76μ GXT                          |
| 50565 -XX007A   | 60                                | -                                       | .125±.010/3.18±0.25         | TIN-LEAD            | 30μ"/0.76μ GOLD                         |
| 50565 -XX007ALF | 60                                | -                                       | .125±.010/3.18±0.25         | TIN                 | 30μ"/0.76μ GXT                          |



FCJconnect.com

Copyright FCJ

|                       |                |    |      |                                       |   |                |  |
|-----------------------|----------------|----|------|---------------------------------------|---|----------------|--|
| mat'l. code<br>NOTE 3 |                |    |      | surface<br>ISO 1302                   | tolerance<br>ISO 406<br>ISO 1101                                | projection<br> | product family<br>HPC  |
| ltr                   | ecn no         | dr | date | tolerances unless otherwise specified |   |                | title<br>4 ROW R/A RECEPTACLE<br>SOLDER TAIL, 0 G.P., 6 P.P. |
| G                     |                |    |      | angles                                | linear  |                |  |
|                       |                |    |      | 0±2'                                  | .XX ±.01/XX±0.3<br>.XXX ±.005/XXX±0.13<br>XXXX ±.0020/XXX±0.051 |                | dwg no<br>50565  |
|                       |                |    |      | dr                                    | D. SHEAFFER   | 9/15/92        | sheet 3 of 3   |
|                       |                |    |      | engr                                  | S. CLARK  | 9/15/92        | size<br>A3   |
|                       |                |    |      | chr                                   | S. CLARK  | 9/15/92        | type<br>Product Customer Drawing                             |
|                       |                |    |      | appd                                  | S. CLARK  | 9/15/92        |  |
| sheet index           | revision sheet |    |      |                                       |   |                |  |

form A3



Компания «ЭлектроПласт» предлагает заключение долгосрочных отношений при поставках импортных электронных компонентов на взаимовыгодных условиях!

Наши преимущества:

- Оперативные поставки широкого спектра электронных компонентов отечественного и импортного производства напрямую от производителей и с крупнейших мировых складов;
- Поставка более 17-ти миллионов наименований электронных компонентов;
- Поставка сложных, дефицитных, либо снятых с производства позиций;
- Оперативные сроки поставки под заказ (от 5 рабочих дней);
- Экспресс доставка в любую точку России;
- Техническая поддержка проекта, помощь в подборе аналогов, поставка прототипов;
- Система менеджмента качества сертифицирована по Международному стандарту ISO 9001;
- Лицензия ФСБ на осуществление работ с использованием сведений, составляющих государственную тайну;
- Поставка специализированных компонентов (Xilinx, Altera, Analog Devices, Intersil, Interpoint, Microsemi, Aeroflex, Peregrine, Syfer, Eurofarad, Texas Instrument, Miteq, Cobham, E2V, MA-COM, Hittite, Mini-Circuits, General Dynamics и др.);

Помимо этого, одним из направлений компании «ЭлектроПласт» является направление «Источники питания». Мы предлагаем Вам помощь Конструкторского отдела:

- Подбор оптимального решения, техническое обоснование при выборе компонента;
- Подбор аналогов;
- Консультации по применению компонента;
- Поставка образцов и прототипов;
- Техническая поддержка проекта;
- Защита от снятия компонента с производства.



#### Как с нами связаться

**Телефон:** 8 (812) 309 58 32 (многоканальный)

**Факс:** 8 (812) 320-02-42

**Электронная почта:** [org@eplast1.ru](mailto:org@eplast1.ru)

**Адрес:** 198099, г. Санкт-Петербург, ул. Калинина, дом 2, корпус 4, литера А.