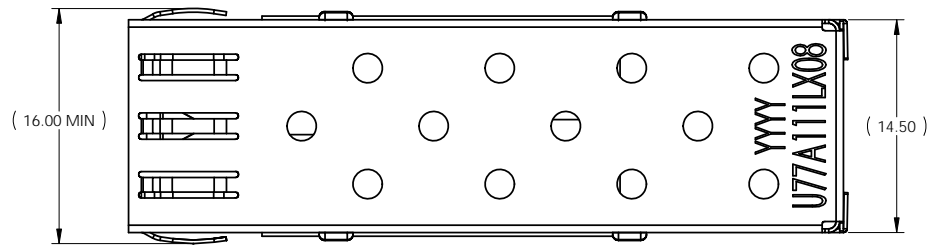




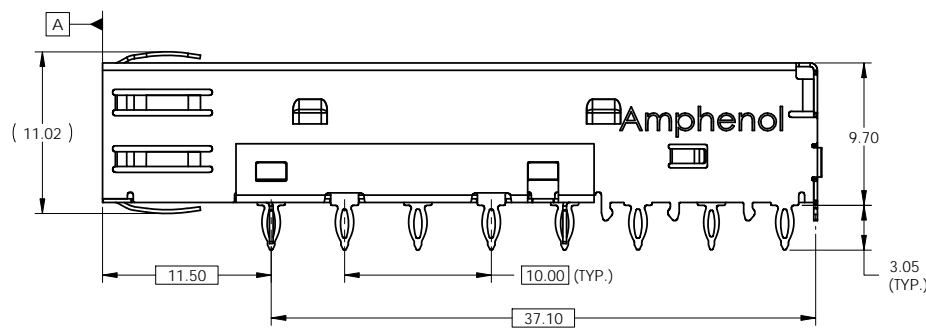
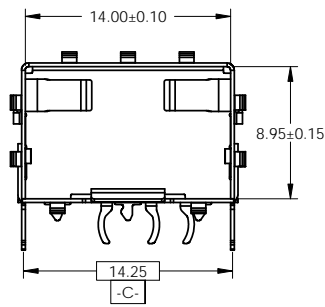
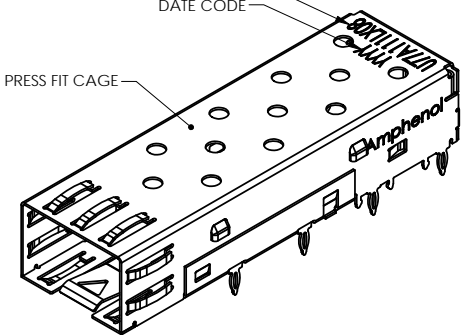
REVISIONS				
REV	ECN	DESCRIPTION	DATE	APPROVED
A		INITIAL RELEASE	MAR 10'11	JASON



PART NUMBER
(LAST DIGIT INDICATING PACKAGING
TYPE NOT INCLUDED ON THE PART)

DATE CODE

SFP PRESS FIT CAGE



MATERIAL: (RoHS COMPLIANT)

CAGE: COPPER ALLOY

PLATING:
 PLATING OPTION 2: 2.54 µm NICKEL PLATING.
 PLATING OPTION 3: 2.54 - 7.62 µm
 MATTE TIN PLATING OVER 1.27 µm NICKEL.

PACKAGING: TRAY PACKAGING.

TEMPERATURE RANGE: -40°C TO 85°C.

AMPHENOL PART NUMBER CONFIGURATION

U 7 7 - A 1 1 1 L - X 0 8 1

CAGE PLATING:
 2 = NICKEL
 3 = MATTE TIN

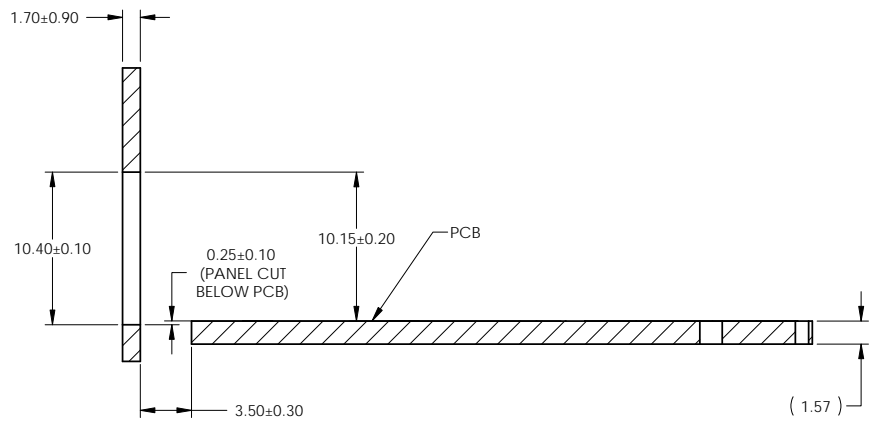
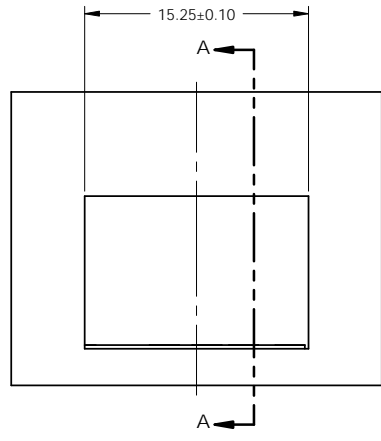
PACKAGING:
 1 = TRAY PACKAGING

DO NOT SCALE DRAWING

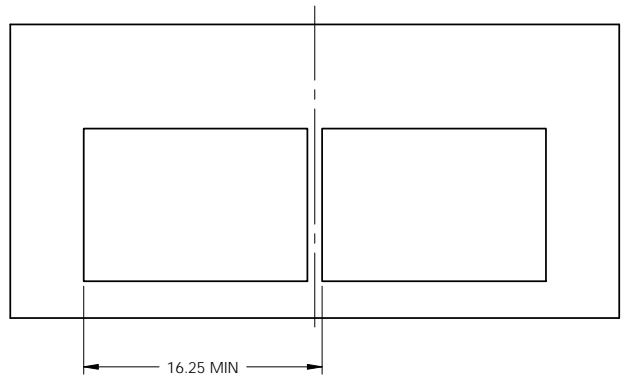
THIS DOCUMENT CONTAINS PROPRIETARY INFORMATION AND SUCH INFORMATION MAY NOT BE DISCLOSED TO OTHERS FOR ANY PURPOSE OR USED FOR MANUFACTURING PURPOSES WITHOUT PERMISSION FROM AMPHENOL CANADA CORP.

UNLESS OTHERWISE SPECIFIED DIMENSIONS ARE IN MILLIMETERS TOLERANCES ARE: DECIMALS: X.X ± 0.15 ANGLES: ± 0.5° MATERIAL AND FINISH: SEE NOTE	APPROVALS	DATE	Amphenol Canada Corp.		
	DRAWN: MIKE.H	MAR 10'11			
	DESIGNED: JASON	MAR 10'11			
	CHECKED: X	X			
QA APPD: X	X				
REF:	E APPD: X	X	SIZE: A3	DWG. NO: P-U77-A111L-X081	REV: A
CODE IDENT NO: 03554	DWG APPD: JASON	MAR 10'11	SCALE: 3:1	PROJECT:	SHEET: 1 OF 5

REVISIONS				
REV.	ECN	DESCRIPTION	DATE	APPROVED
A		INITIAL RELEASE	MAR 10'11	JASON



**RECOMMENDED BEZEL DESIGN
(SINGLE SIDE CAGE MOUNT)**



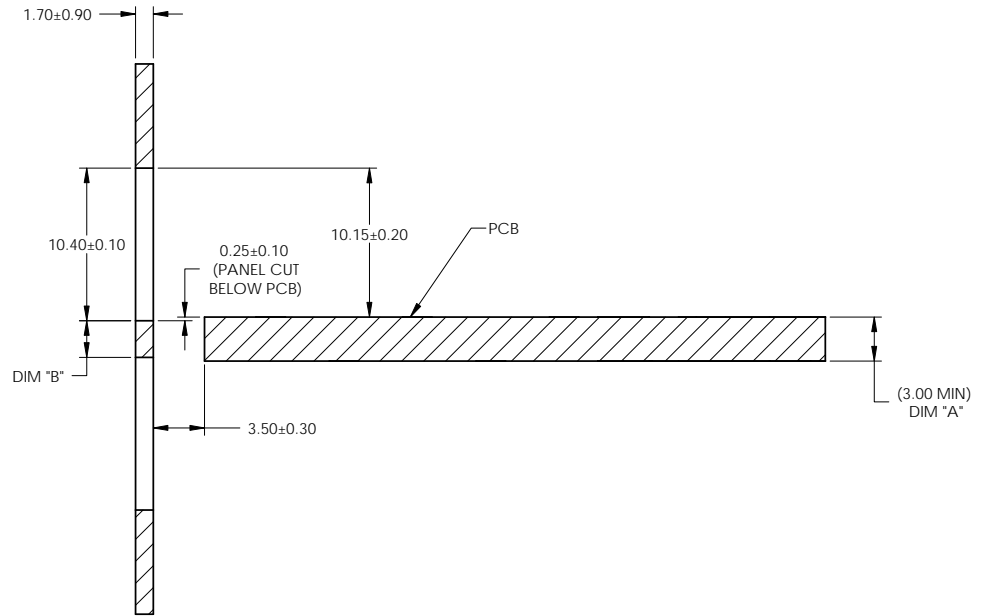
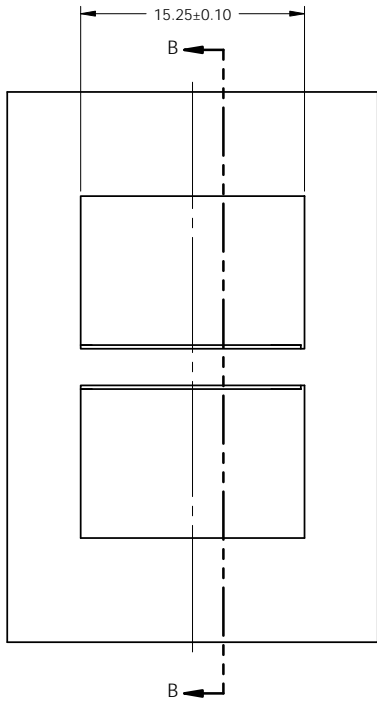
DO NOT SCALE DRAWING

THIS DOCUMENT CONTAINS PROPRIETARY INFORMATION AND SUCH INFORMATION MAY NOT BE DISCLOSED TO OTHERS FOR ANY PURPOSE OR USED FOR MANUFACTURING PURPOSES WITHOUT PERMISSION FROM AMPHENOL CANADA CORP.

UNLESS OTHERWISE SPECIFIED DIMENSIONS ARE IN MILLIMETERS TOLERANCES ARE:		APPROVALS		DATE		Amphenol Canada Corp.						
DECIMALS X.X ± 0.15 X.XX ± 0.10		ANGLES ± 0.5°		DRAWN	MIKE.H	MAR 10'11	TITLE					
MATERIAL AND FINISH SEE NOTE		CHECKED	JASON	MAR 10'11	1X1 SFP CAGE							
REF.		QA APPD	X	X								
CODE IDENT. NO.	03554	E APPD	X	X	SCALE	3:1	SIZE	A3	DWG. NO.	P-U77-A111L-X081	REV.	A
		DWG APPD	JASON	MAR 10'11	PROJECT		SHEET	2 OF 5				

REVISIONS

REV	ECN	DESCRIPTION	DATE	APPROVED
A		INITIAL RELEASE	MAR 10'11	JASON



SECTION B-B

**RECOMMENDED BEZEL DESIGN
(BELLY TO BELLY CAGE MOUNT)**

NOTE:
 PANEL CUTOUTS SIZES PER SFF 8433 SPEC.
 FOR BELLY TO BELLY MOUNTING,
 DIM "A" (PCB THICKNESS) IS 3.0 mm MIN.
 DIM "B" RELATED TO DIM "A". FOR
 DIM "B"=DIM "A"-0.80mm. THE PANEL
 CUTOUT 10.40mm MIGHT BE INCREASED
 UP TO 10.80mm IN ORDER TO
 ACCOMMODATE PCB TOLERANCE.

DO NOT SCALE DRAWING

THIS DOCUMENT CONTAINS PROPRIETARY INFORMATION AND SUCH INFORMATION MAY NOT BE DISCLOSED TO OTHERS FOR ANY PURPOSE OR USED FOR MANUFACTURING PURPOSES WITHOUT PERMISSION FROM AMPHENOL CANADA CORP.

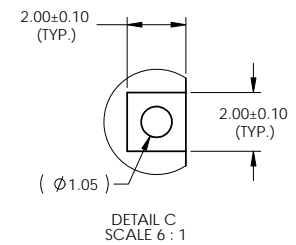
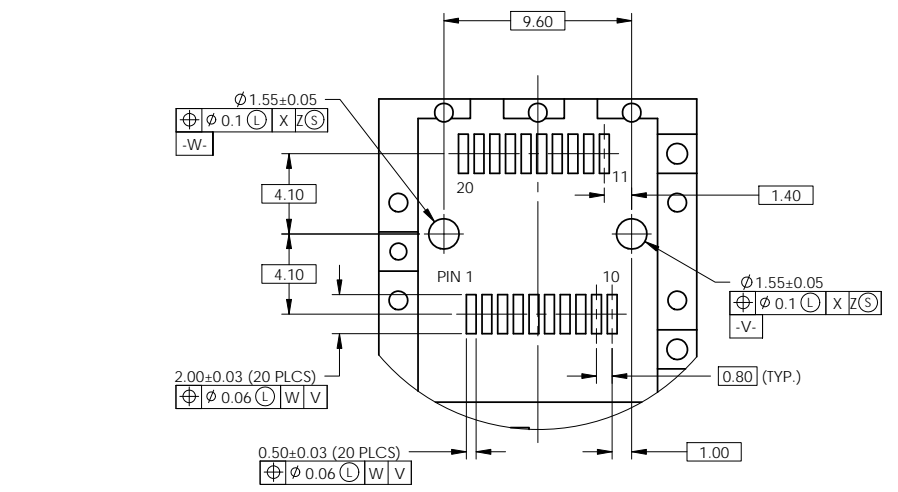
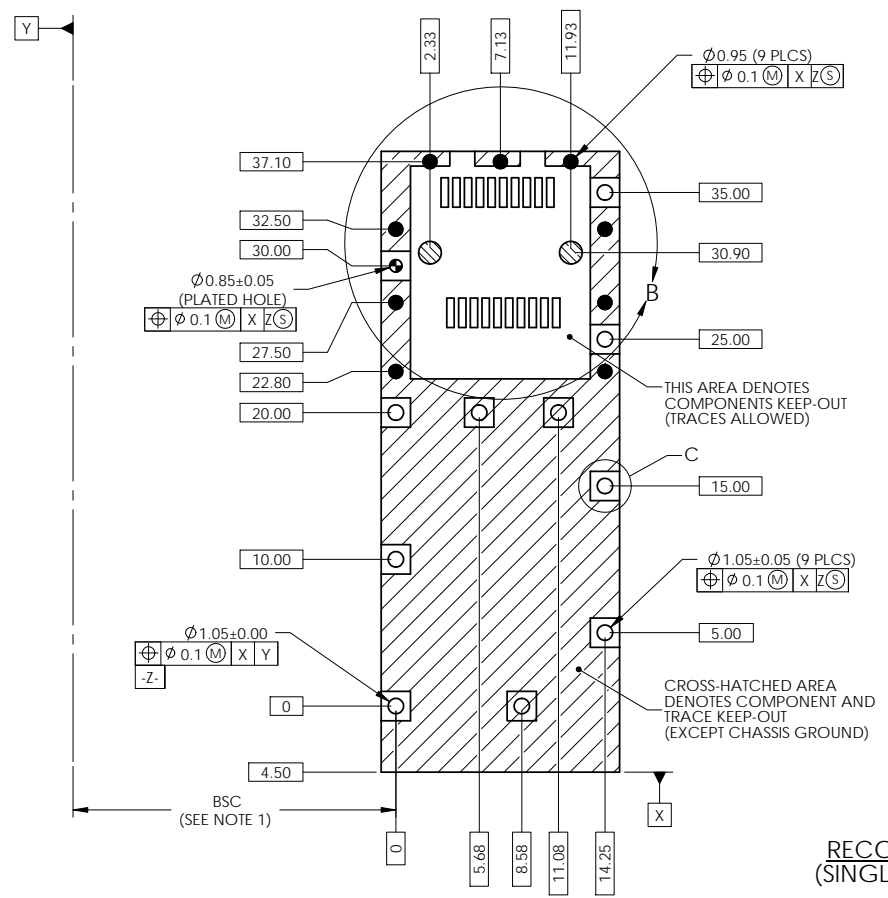
UNLESS OTHERWISE SPECIFIED DIMENSIONS ARE IN MILLIMETERS TOLERANCES ARE:		APPROVALS		DATE		Amphenol Canada Corp.				
DECIMALS X.X ± 0.15 X.XX ± 0.10		ANGLES ± 0.5°		DRAWN MIKE.H	MAR 10'11					TITLE 1X1 SFP CAGE
MATERIAL AND FINISH SEE NOTE		CHECKED X	X	DESIGNED JASON	MAR 10'11	SCALE A3				
REF.	E APPD X	X	X	QA APPD X	X					DWG. NO. P-U77-A111L-X081
CODE IDENT. NO. 03554	DWG APPD JASON	MAR 10'11	SCALE 3:1	PROJECT		SHEET				

REVISIONS

REV	ECN	DESCRIPTION	DATE	APPROVED
A		INITIAL RELEASE	MAR 10'11	JASON

- HOLE SIZES**
- ⊘ 1.55
 - ⊘ 1.05
 - 0.95
 - ⊘ 0.85

- NOTES:**
- DATUM AND BASIC DIMENSIONS ESTABLISHED BY CUSTOMER.
 - PADS AND VIAS ARE CHASSIS GROUND.
 - THRU-HOLES PLATING OPTIONAL.
 - SEE DRAWING P-U76-A20-X00XX FOR CONNECTOR LAYOUT.



RECOMMENDED PCB LAYOUT (SINGLE SIDE CAGE MOUNTING)

DO NOT SCALE DRAWING

THIS DOCUMENT CONTAINS PROPRIETARY INFORMATION AND SUCH INFORMATION MAY NOT BE DISCLOSED TO OTHERS FOR ANY PURPOSE OR USED FOR MANUFACTURING PURPOSES WITHOUT PERMISSION FROM AMPHENOL CANADA CORP.

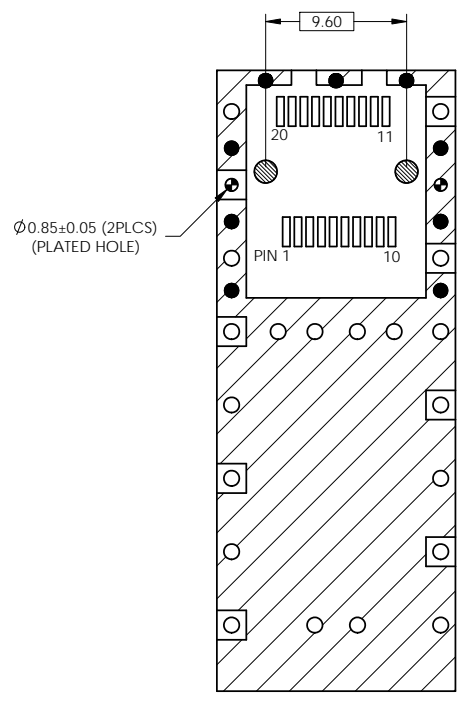
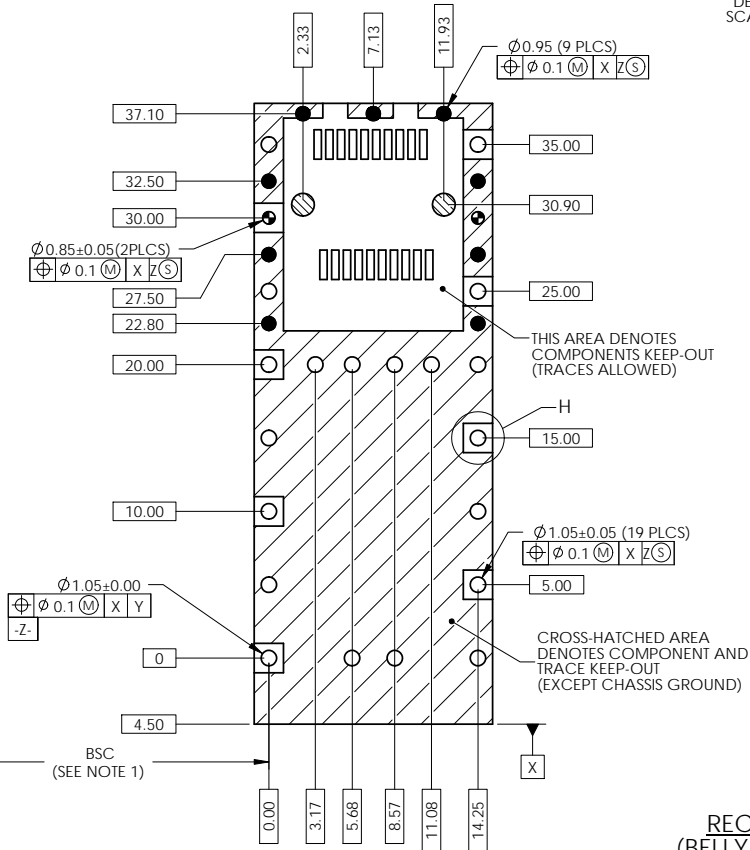
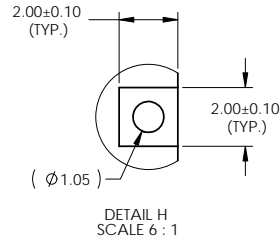
UNLESS OTHERWISE SPECIFIED DIMENSIONS ARE IN MILLIMETERS TOLERANCES ARE:		APPROVALS		DATE		Amphenol Canada Corp.				
DECIMALS	ANGLES	DRAWN	MIKE.H	MAR 10'11	TITLE					
X.X ± 0.15	± 0.5°	DESIGNED	JASON	MAR 10'11	1X1 SFP CAGE					
X.XX ± 0.10		CHECKED	X	X						
MATERIAL AND FINISH		QA APPD	X	X						
SEE NOTE		E APPD	X	X	SIZE	DWG. NO.	PROJECT	REV.		
REF.					A3	P-U77-A111L-X081		A		
CODE IDENT NO.	03554	DWG APPD	JASON	MAR 10'11	SCALE	3:1	SHEET	4 OF 5		

- NOTES:
 1. DATUM AND BASIC DIMENSIONS ESTABLISHED BY CUSTOMER.
 2. PADS AND VIAS ARE CHASSIS GROUND.
 3. THRU-HOLES PLATING OPTIONAL.
 4. SEE DRAWING P-U76-A20-X00XX FOR CONNECTOR LAYOUT.

HOLE SIZES

- ⊘ $\phi 1.55$
- $\phi 1.05$
- $\phi 0.95$
- ⊕ $\phi 0.85$

REVISIONS				
REV	ECN	DESCRIPTION	DATE	APPROVED
A		INITIAL RELEASE	MAR 10'11	JASON



RECOMMENDED PCB LAYOUT
 (BELLY TO BELLY CAGE MOUNTING)

DO NOT SCALE DRAWING

THIS DOCUMENT CONTAINS PROPRIETARY INFORMATION AND SUCH INFORMATION MAY NOT BE DISCLOSED TO OTHERS FOR ANY PURPOSE OR USED FOR MANUFACTURING PURPOSES WITHOUT PERMISSION FROM AMPHENOL CANADA CORP.

UNLESS OTHERWISE SPECIFIED DIMENSIONS ARE IN MILLIMETERS TOLERANCES ARE: DECIMALS ANGLES X.X ± 0.15 ± 0.5° X.XX ± 0.10	APPROVALS	DATE	Amphenol Canada Corp.	
	DRAWN MIKE.H	MAR 10'11	TITLE	
MATERIAL AND FINISH	CHECKED	X X	1X1 SFP CAGE	
SEE NOTE	DESIGNED JASON	MAR 10'11	SIZE DWG. NO. P-U77-A111L-X081	
REF.	QA APPD	X X	REV. A	
CODE IDENT. NO. 03554	E APPD	X X	SCALE 3:1	PROJECT
	DWG APPD JASON	MAR 10'11	SHEET 5 OF 5	



Компания «ЭлектроПласт» предлагает заключение долгосрочных отношений при поставках импортных электронных компонентов на взаимовыгодных условиях!

Наши преимущества:

- Оперативные поставки широкого спектра электронных компонентов отечественного и импортного производства напрямую от производителей и с крупнейших мировых складов;
- Поставка более 17-ти миллионов наименований электронных компонентов;
- Поставка сложных, дефицитных, либо снятых с производства позиций;
- Оперативные сроки поставки под заказ (от 5 рабочих дней);
- Экспресс доставка в любую точку России;
- Техническая поддержка проекта, помощь в подборе аналогов, поставка прототипов;
- Система менеджмента качества сертифицирована по Международному стандарту ISO 9001;
- Лицензия ФСБ на осуществление работ с использованием сведений, составляющих государственную тайну;
- Поставка специализированных компонентов (Xilinx, Altera, Analog Devices, Intersil, Interpoint, Microsemi, Aeroflex, Peregrine, Syfer, Eurofarad, Texas Instrument, Miteq, Cobham, E2V, MA-COM, Hittite, Mini-Circuits, General Dynamics и др.);

Помимо этого, одним из направлений компании «ЭлектроПласт» является направление «Источники питания». Мы предлагаем Вам помощь Конструкторского отдела:

- Подбор оптимального решения, техническое обоснование при выборе компонента;
- Подбор аналогов;
- Консультации по применению компонента;
- Поставка образцов и прототипов;
- Техническая поддержка проекта;
- Защита от снятия компонента с производства.



Как с нами связаться

Телефон: 8 (812) 309 58 32 (многоканальный)

Факс: 8 (812) 320-02-42

Электронная почта: org@eplast1.ru

Адрес: 198099, г. Санкт-Петербург, ул. Калинина, дом 2, корпус 4, литера А.