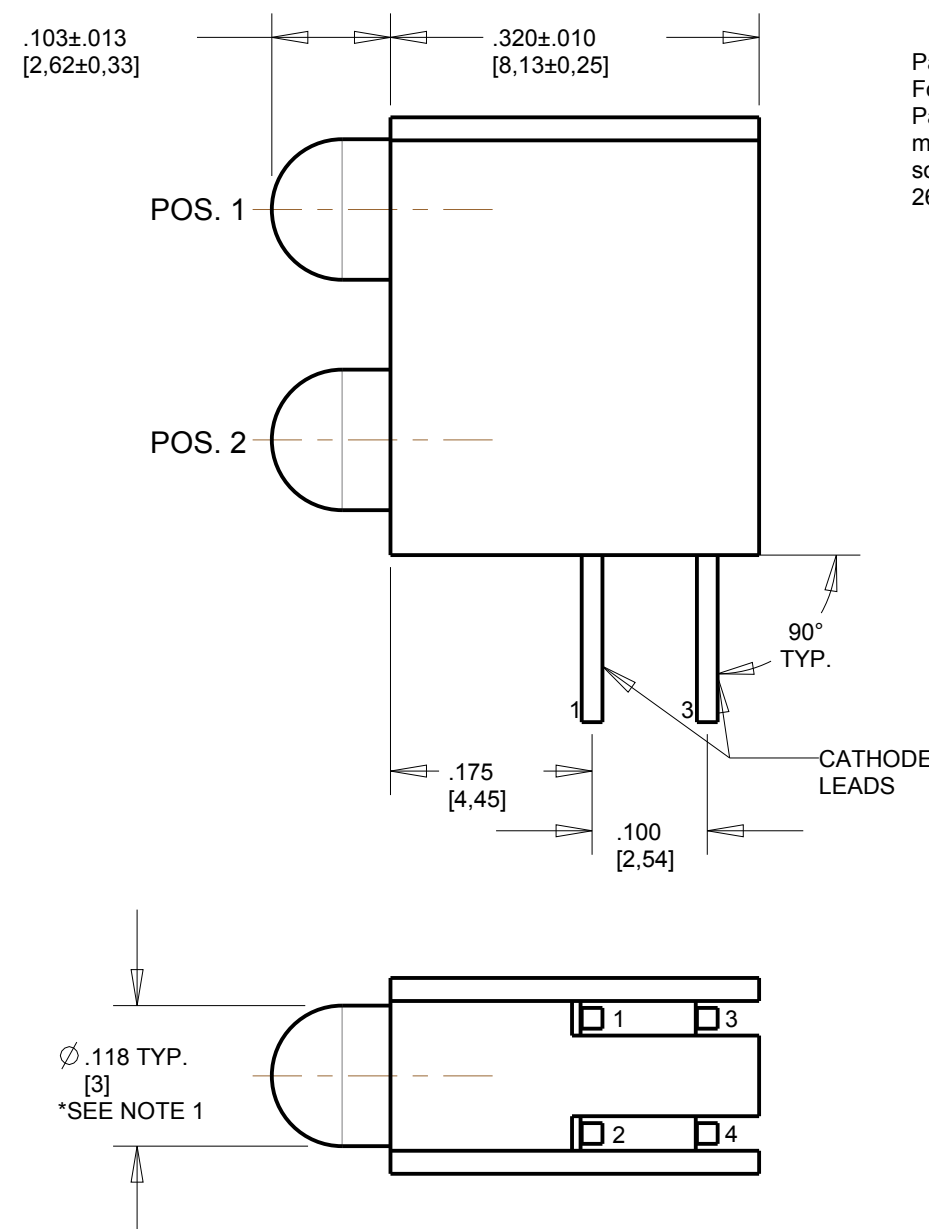
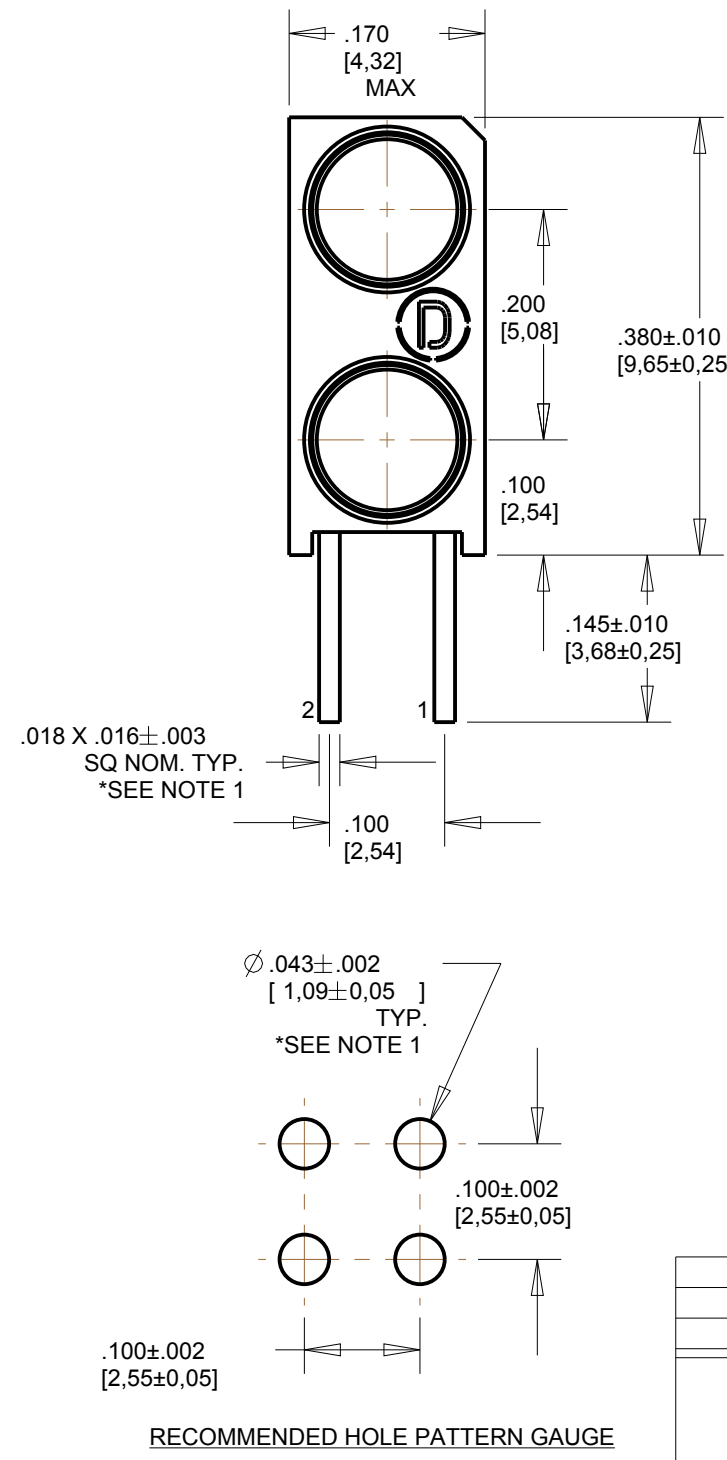
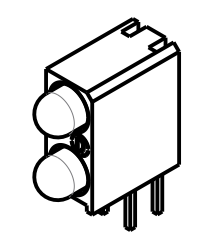


| ASSY. NO. (CAT. NO.) | LED COLOR | |
|-------------------------|------------|------------|
| | POSITION 1 | POSITION 2 |
| 553-0101F | BLANK | RED |
| 553-0102F | BLANK | GREEN |
| 553-0103F | BLANK | YELLOW |
| 553-0107F | BLANK | ORANGE |
| 553-0108F | BLANK | BLUE |
| 553-0110F | RED | BLANK |
| 553-0111F | RED | RED |
| 553-0112F | RED | GREEN |
| 553-0113F | RED | YELLOW |
| 553-0118F | RED | BLUE |
| 553-0120F | GREEN | BLANK |
| 553-0121F | GREEN | RED |
| 553-0122F | GREEN | GREEN |
| 553-0123F | GREEN | YELLOW |
| 553-0127F | GREEN | ORANGE |
| 553-0128F | GREEN | BLUE |
| 553-0130F | YELLOW | BLANK |
| 553-0131F | YELLOW | RED |
| 553-0132F | YELLOW | GREEN |
| 553-0133F | YELLOW | YELLOW |
| 553-0171F | ORANGE | RED |
| 553-0172F | ORANGE | GREEN |
| 553-0173F | ORANGE | YELLOW |
| 553-0177F | ORANGE | ORANGE |
| 553-0181F | BLUE | RED |
| 553-0182F | BLUE | GREEN |
| 553-0188F | BLUE | BLUE |
| 553-0199F | WHITE | WHITE |
| 553-0201F | BLANK | RED |
| 553-0202F | BLANK | GREEN |
| 553-0203F | BLANK | YELLOW |
| 553-0210F | RED | BLANK |
| 553-0211F | RED | RED |
| 553-0212F | RED | GREEN |
| 553-0213F | RED | YELLOW |
| 553-0220F | GREEN | BLANK |
| 553-0221F | GREEN | RED |
| 553-0222F | GREEN | GREEN |
| 553-0223F | GREEN | YELLOW |
| 553-0230F | YELLOW | BLANK |
| 553-0231F | YELLOW | RED |
| 553-0232F | YELLOW | GREEN |
| 553-0233F | YELLOW | YELLOW |
| 553-0301F | BLANK | RED |
| 553-0302F | BLANK | GREEN |
| 553-0303F | BLANK | YELLOW |
| 553-0310F | RED | BLANK |
| 553-0311F | RED | RED |
| 553-0312F | RED | GREEN |
| 553-0313F | RED | YELLOW |
| 553-0320F | GREEN | BLANK |
| 553-0321F | GREEN | RED |
| 553-0322F | GREEN | GREEN |
| 553-0323F | GREEN | YELLOW |
| 553-0331F | YELLOW | RED |
| 553-0332F | YELLOW | GREEN |
| 553-0333F | YELLOW | YELLOW |



RoHS COMPLIANT 553-0XXXF
Part Numbers with the "F" suffix ending are RoHS Compliant.
For example: 553-0101F
Packaging is marked with "RoHS Compliant" label or equivalent markings. Parts can be wave soldered, dip soldered or hand soldered using typical lead-free soldering process with max 260°C temp. for 5 sec.

| BIN | LIMITS (WHITE LED) (CHROMATICITY COORDINATES) | | | |
|-----|--|-------|-------|-------|
| | X | Y | Z | U |
| A3 | 0.270 | 0.270 | 0.250 | 0.250 |
| | 0.275 | 0.325 | 0.300 | 0.250 |
| A4 | 0.270 | 0.250 | 0.250 | 0.270 |
| | 0.275 | 0.250 | 0.200 | 0.225 |
| B3 | 0.290 | 0.290 | 0.270 | 0.270 |
| | 0.300 | 0.350 | 0.325 | 0.275 |
| B4 | 0.290 | 0.270 | 0.270 | 0.290 |
| | 0.300 | 0.275 | 0.225 | 0.250 |
| C3 | 0.310 | 0.310 | 0.290 | 0.290 |
| | 0.325 | 0.375 | 0.350 | 0.300 |
| C4 | 0.310 | 0.290 | 0.290 | 0.310 |
| | 0.325 | 0.300 | 0.250 | 0.275 |
| D3 | 0.330 | 0.330 | 0.310 | 0.310 |
| | 0.350 | 0.400 | 0.375 | 0.325 |
| D4 | 0.330 | 0.310 | 0.310 | 0.330 |
| | 0.350 | 0.325 | 0.275 | 0.300 |



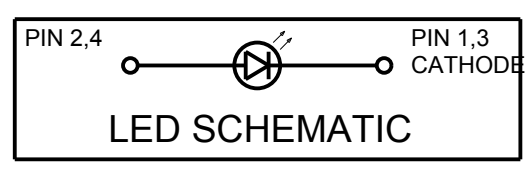
SCALE 2.000



ATTENTION:
OBSERVE PRECAUTIONS FOR
HANDLING ELECTROSTATIC
SENSITIVE DEVICES

NOTES:

- (FOR ORANGE: LEADS .018 SQ. NOM.), LED BODY ϕ .115±.010 AND THE PC BOARD TOLERANCE ON LEAD THICKNESS TO BE ±.003.
- LED LEAD DIMENSIONS SHOWN ARE MEASURED AT HOUSING EXIT.
- LEADS TO FIT INTO HOLES SPACED AS PER PATTERN.
- PIN NUMBERS FOR REFERENCE ONLY, DESIGNATION NON-EXISTENT ON PART.
- DIALIGHT PART NUMBERS: 553-0XXXF.
- THIS ASSEMBLY CONTAINS ELECTROSTATIC DISCHARGE SENSITIVE DEVICES (ESDS). MAINTAIN ALL PRECAUTIONARY MEASURES DURING ASSEMBLY, HANDLING, AND STORAGE IN ACCORDANCE WITH IPC-A-610.



| 553-01XXXF | | | | | | |
|--|--------|------|------|------|---------|-----------------|
| OPERATING CHARACTERISTICS AT 25 °C AMBIENT: 10 mA LEDs | | | | | | |
| LED CHARACTERISTICS | COLOR | MIN. | TYP. | MAX. | UNITS | TEST CONDITIONS |
| LUMINOUS INTENSITY | RED | 2.5 | 8.7 | 18 | mcd | $I_F = 10$ mA |
| | YELLOW | 1.7 | 5.6 | — | | |
| | GREEN | 5.6 | 12.6 | 29 | | |
| | BLUE | 11 | 16 | 23 | | |
| | ORANGE | 3.4 | 7.0 | 10.8 | | |
| | WHITE | 400 | 1100 | 1900 | | |
| PEAK WAVELENGTH | RED | | 635 | | nm | $I_F = 10$ mA |
| | YELLOW | | 588 | | | |
| | GREEN | | 565 | | | |
| | BLUE | | 468 | | | |
| | ORANGE | | 600 | | | |
| | WHITE | | | | | |
| DOMINANT WAVELENGTH | RED | 615 | 625 | 632 | nm | $I_F = 10$ mA |
| | YELLOW | 585 | 590 | 595 | | |
| | GREEN | 564 | 568 | 573 | | |
| | BLUE | 460 | 467 | 475 | | |
| | ORANGE | 597 | 602 | 616 | | |
| | WHITE | | | | | |
| FORWARD VOLTAGE | RED | | 2.0 | 2.6 | V | $I_F = 10$ mA |
| | YELLOW | | 2.1 | 2.6 | | |
| | GREEN | | 2.1 | 2.6 | | |
| | BLUE | 2.0 | 2.7 | 4.1 | | |
| | ORANGE | 1.5 | 1.9 | 3.5 | | |
| | WHITE | | 3.5 | 4.0 | | |
| REVERSE CURRENT | RED | | | 100 | μ A | $V_R = 5$ V |
| | YELLOW | | | 100 | | |
| | GREEN | | | 100 | | |
| | BLUE | | | 10 | | |
| | ORANGE | | | 100 | | |
| | WHITE | | | 100 | | |
| VIEWING ANGLE | RED | | 60 | | DEGREE | $I_F = 20$ mA |
| | YELLOW | | 60 | | | |
| | GREEN | | 60 | | | |
| | BLUE | | 100 | | | |
| | ORANGE | | 60 | | | |
| | WHITE | | 45 | | | |

| 553-02XXXF | | | | | | |
|---|--------|------|------|------|---------|-----------------|
| OPERATING CHARACTERISTICS AT 25 °C AMBIENT: 2 mA LOW CURRENT LEDs | | | | | | |
| LED CHARACTERISTICS | COLOR | MIN. | TYP. | MAX. | UNITS | TEST CONDITIONS |
| LUMINOUS INTENSITY | RED | 0.75 | 2.5 | | mcd | $I_F = 2$ mA |
| | YELLOW | 0.4 | 4.5 | | | |
| | GREEN | 0.4 | 1.1 | | | |
| PEAK WAVELENGTH | RED | | 635 | | nm | $I_F = 2$ mA |
| | YELLOW | | 585 | | | |
| | GREEN | | 565 | | | |
| FORWARD VOLTAGE | RED | 1.7 | 2.2 | | V | $I_F = 2$ mA |
| | YELLOW | 1.8 | 2.2 | | | |
| | GREEN | 1.9 | 2.2 | | | |
| REVERSE CURRENT | ALL | | | 10 | μ A | $V_R = 5$ V |
| VIEWING ANGLE | ALL | | 60 | | DEGREE | |

| 553-03XXXF | | | | | | |
|--|--------|------|------|------|---------|-----------------|
| OPERATING CHARACTERISTICS AT 25 °C AMBIENT: 5 V INTEGRAL RESISTOR LEDs | | | | | | |
| LED CHARACTERISTICS | COLOR | MIN. | TYP. | MAX. | UNITS | TEST CONDITIONS |
| LUMINOUS INTENSITY | RED | 8.7 | 29.0 | | mcd | $V_F = 5$ V |
| | YELLOW | 3.7 | 12.6 | | | |
| | GREEN | 5.6 | 19.0 | | | |
| PEAK WAVELENGTH | RED | | 635 | | nm | $I_F = 10$ mA |
| | YELLOW | | 585 | | | |
| | GREEN | | 565 | | | |
| FORWARD CURRENT | RED | 10 | 20 | | mA | $V_F = 5$ V |
| | YELLOW | 10 | 20 | | | |
| | GREEN | 10 | 20 | | | |
| REVERSE CURRENT | RED | | | 100 | μ A | $V_R = 5$ V |
| | YELLOW | | | 100 | | |
| | GREEN | | | 100 | | |
| VIEWING ANGLE | ALL | | 60 | | DEGREE | |

| 553-03XXXF | | | | |
|---|-------------|-------|--------|-------|
| ABSOLUTE MAXIMUM RATINGS AT 25 °C AMBIENT | | | | |
| | RED | GREEN | YELLOW | UNITS |
| 5 V INTEGRAL RESISTOR LEDs | | | | |
| CONTINUOUS FORWARD VOLTAGE | 7.5 | | | V |
| REVERSE VOLTAGE | 5 | | | V |
| LINEAR DERATING FROM 50 °C | 0.071 | | | V/°C |
| LEAD SOLDERING TEMPERATURE (.063" [1.6mm] FROM BODY) FOR 5 SEC. | 260 | | | °C |
| OPERATING TEMPERATURE | -40 TO +85 | | | °C |
| STORAGE TEMPERATURE | -55 TO +100 | | | °C |

| 553-01XXXF | | | | | | | |
|---|-------------|--------|-------------|------|-------------|-------|-------|
| ABSOLUTE MAXIMUM RATINGS AT 25 °C AMBIENT | | | | | | | |
| | RED | YELLOW | GREEN | BLUE | ORANGE | WHITE | UNITS |
| POWER DISSIPATION | 100 | 60 | 120 | 120 | 135 | 120 | mW |
| PEAK FORWARD CURRENT (1/5 DUTY CYCLE, 1 ms PULSE WIDTH) (1/10, .1ms FOR BLUE) ($t_c < 10 \mu$ s D=.005 FOR ORANGE) | 90 | 60 | 90 | 100 | 500 | 100 | mA |
| CONTINUOUS FORWARD CURRENT | 30 | 20 | 30 | 30 | 30 | 30 | mA |
| LINEAR DERATING FROM 50 °C (30 °C FOR BLUE, 30 °C FOR WHITE) | 0.40 | 0.25 | 0.40 | .5 | 0.50 | .45 | mA/°C |
| REVERSE VOLTAGE | 5 | | | | | | V |
| LEAD SOLDERING TEMPERATURE (.063" [1.6mm] FROM BODY) FOR 5 SEC. | 260 | | | | | | °C |
| OPERATING TEMPERATURE | -55 TO +100 | | -40 TO +85 | | -55 TO +100 | | °C |
| STORAGE TEMPERATURE | -55 TO +100 | | -55 TO +100 | | -40 TO +100 | | °C |

| 553-02XXXF | | | | |
|---|-------------|-------|--------|-------|
| ABSOLUTE MAXIMUM RATINGS AT 25 °C AMBIENT: | | | | |
| | RED | GREEN | YELLOW | |
| 2 mA LOW CURRENT LEDs | | | | |
| POWER DISSIPATION | 20 | | | mW |
| PEAK FORWARD CURRENT (1/10 DUTY CYCLE, 0.1ms PULSE WIDTH) | 500 | | | mA |
| CONTINUOUS FORWARD CURRENT | 7 | | | mA |
| LINEAR DERATING FROM 95 °C | 0.7 | | | mA/°C |
| REVERSE VOLTAGE | 5 | | | V |
| LEAD SOLDERING TEMPERATURE (.063" [1.6mm] FROM BODY) FOR 5 SEC. | 260 | | | °C |
| OPERATING TEMPERATURE | -55 TO +100 | | | °C |
| STORAGE TEMPERATURE | -55 TO +100 | | | °C |

THIS DRAWING AND THE CONTENTS HEREIN ARE CONFIDENTIAL AND THE SOLE PROPERTY OF DIALIGHT CORP. REPRODUCTION OF THIS DRAWING OR CONSTRUCTION OF ANY PARTS WITHIN THIS DRAWING ARE FORBIDDEN WITHOUT THE WRITTEN CONSENT OF DIALIGHT CORP.

SCALE: 6.000

DRAWING NUMBER: **C-17277**

REV: **K**

TOLERANCES: UNLESS OTHERWISE SPECIFIED

FRACTIONS: ±1/64

DECIMALS (XX): ±.02

DECIMALS (XXX): ±.015

TITLE: **3mm LED BI-LEVEL CBI**

MATERIAL: **RoHS COMPLIANT**

ANGLES: ±3°

FINISH: **Dialight**

1501 ROUTE 34 SOUTH FARMINGDALE, NJ 07727 (732) 919-3119 www.dialight.com

FSCM 83330

SHEET 1 OF 1

FAMILY TABLES:



Компания «ЭлектроПласт» предлагает заключение долгосрочных отношений при поставках импортных электронных компонентов на взаимовыгодных условиях!

Наши преимущества:

- Оперативные поставки широкого спектра электронных компонентов отечественного и импортного производства напрямую от производителей и с крупнейших мировых складов;
- Поставка более 17-ти миллионов наименований электронных компонентов;
- Поставка сложных, дефицитных, либо снятых с производства позиций;
- Оперативные сроки поставки под заказ (от 5 рабочих дней);
- Экспресс доставка в любую точку России;
- Техническая поддержка проекта, помощь в подборе аналогов, поставка прототипов;
- Система менеджмента качества сертифицирована по Международному стандарту ISO 9001;
- Лицензия ФСБ на осуществление работ с использованием сведений, составляющих государственную тайну;
- Поставка специализированных компонентов (Xilinx, Altera, Analog Devices, Intersil, Interpoint, Microsemi, Aeroflex, Peregrine, Syfer, Eurofarad, Texas Instrument, Miteq, Cobham, E2V, MA-COM, Hittite, Mini-Circuits, General Dynamics и др.);

Помимо этого, одним из направлений компании «ЭлектроПласт» является направление «Источники питания». Мы предлагаем Вам помощь Конструкторского отдела:

- Подбор оптимального решения, техническое обоснование при выборе компонента;
- Подбор аналогов;
- Консультации по применению компонента;
- Поставка образцов и прототипов;
- Техническая поддержка проекта;
- Защита от снятия компонента с производства.



Как с нами связаться

Телефон: 8 (812) 309 58 32 (многоканальный)

Факс: 8 (812) 320-02-42

Электронная почта: org@eplast1.ru

Адрес: 198099, г. Санкт-Петербург, ул. Калинина, дом 2, корпус 4, литера А.