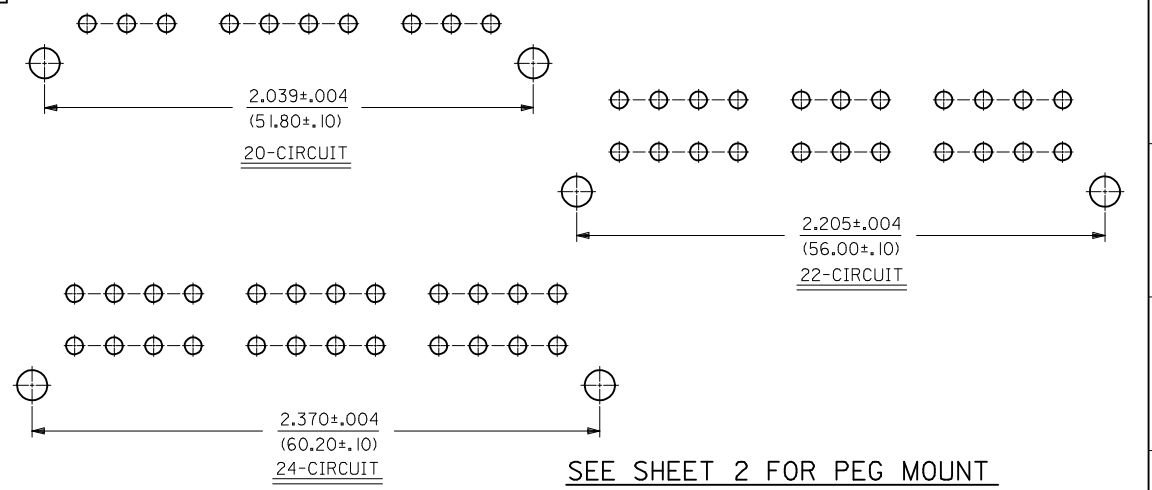
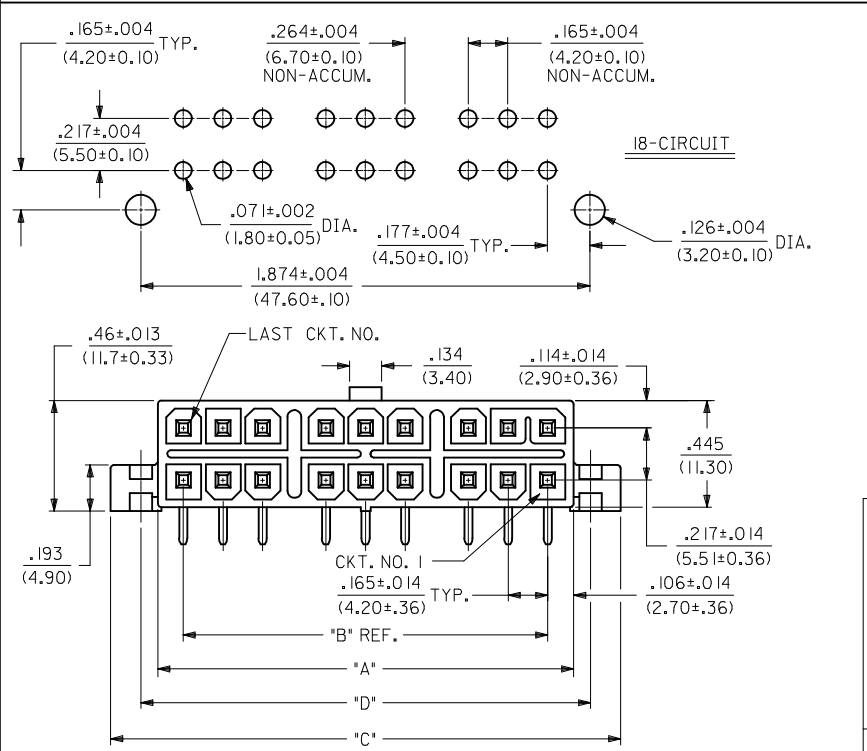
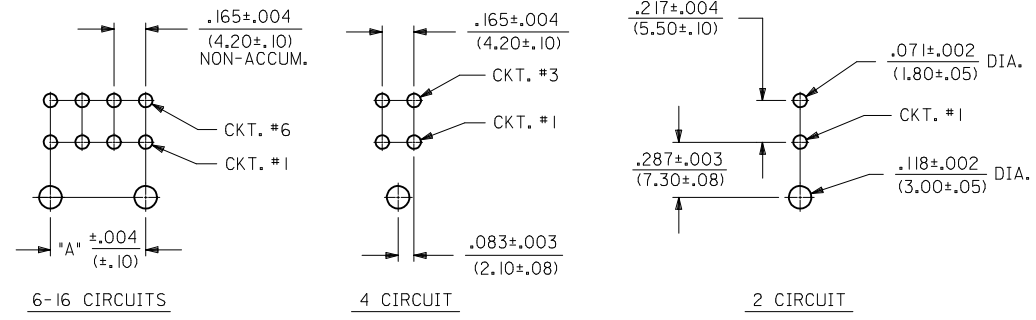
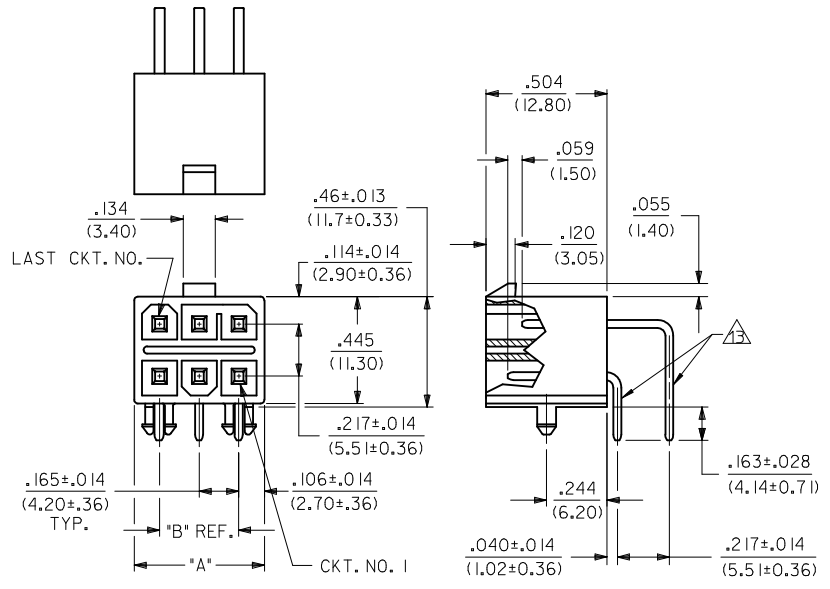


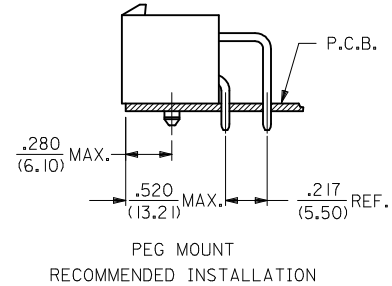
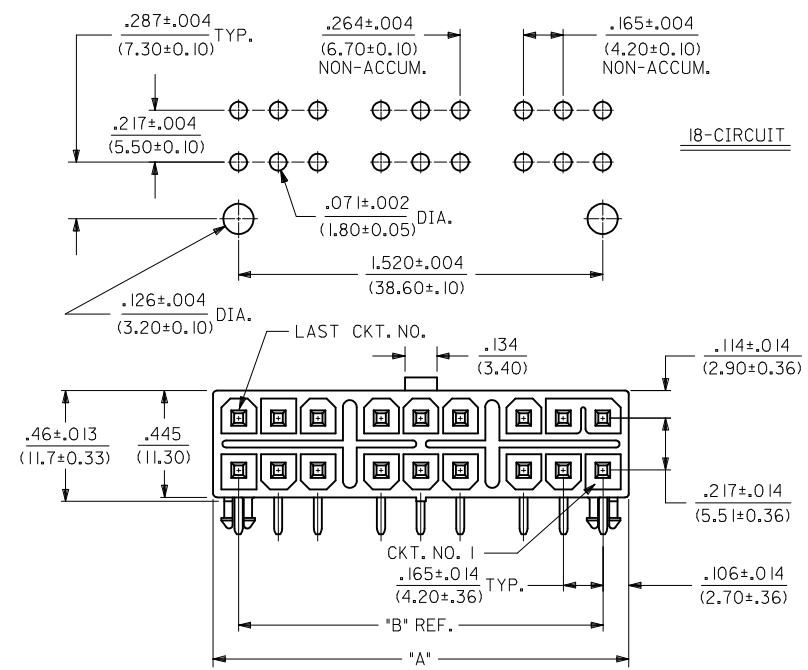
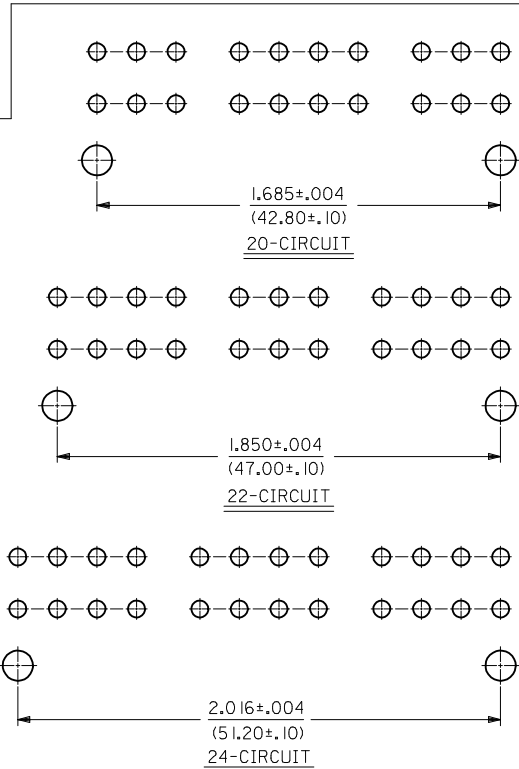
CKT. SIZE	DIM. "A"	DIM. "B"	DIM. "C"	DIM. "D"
2	.213 (5.40)	—	.606 (15.40)	.354 (9.00)
4	.378 (9.60)	.165 (4.20)	.772 (19.60)	.520 (13.20)
6	.543 (13.80)	.331 (8.40)	.937 (23.80)	.685 (17.40)
8	.709 (18.00)	.496 (12.60)	1.102 (28.00)	.850 (21.60)
10	.874 (22.20)	.661 (16.80)	1.268 (32.20)	1.016 (25.80)
12	1.039 (26.40)	.827 (21.00)	1.433 (36.40)	1.181 (30.00)
14	1.205 (30.60)	.992 (25.20)	1.598 (40.60)	1.346 (34.20)
16	1.370 (34.80)	1.157 (29.40)	1.764 (44.80)	1.512 (38.40)
18	1.732 (44.00)	1.520 (38.60)	2.126 (54.00)	1.874 (47.60)
20	1.898 (48.20)	1.685 (42.80)	2.291 (58.20)	2.039 (51.80)
22	2.063 (52.40)	1.850 (47.00)	2.457 (62.40)	2.205 (56.00)
24	2.228 (56.60)	2.016 (51.20)	2.622 (66.60)	2.370 (60.20)



<b>UPDATE NOTE 6</b> IEC NO: UCP2014-0298 DRWING: NGUYEN 2013/08/02 CHKD: J.BELL 2013/08/02 APPR: F.SMITH 2013/08/16	QUALITY SYMBOLS ▽=0 ▽=0 ▽=0	GENERAL TOLERANCES (UNLESS SPECIFIED)		DIMENSION STYLE		SCALE	DESIGN UNITS	THIRD ANGLE PROJECTION	
				IN/MM		2:1	METRIC		
		DRAWN BY		DATE		TITLED			
		CHECKED BY		DATE		RIGHT ANGLE HEADER ASSY SELECTIVELY LOADED MINI-FIT T.P.A. SERIES			
APPROVED BY		DATE		MATERIAL NO.		DOCUMENT NO.		SHEET NO.	
F.SMITH		2011/09/12		SEE CHART		SDA-44483-****		1 OF 3	
DRAFT WHERE APPLICABLE MUST REMAIN WITHIN DIMENSIONS		ANGULAR ±1/2°		SIZE		THIS DRAWING CONTAINS INFORMATION THAT IS PROPRIETARY TO MOLEX INCORPORATED AND SHOULD NOT BE USED WITHOUT WRITTEN PERMISSION			
E4		REV		C					



RECOMMENDED HOLE LAYOUT FOR .070/(1.78) MAX. THICK P.C. BOARD

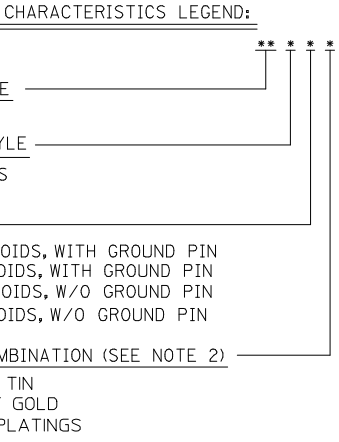


CKT. SIZE	DIM. "A"	DIM. "B"
2	.213 (5.40)	—
4	.378 (9.60)	.165 (4.20)
6	.543 (13.80)	.331 (8.40)
8	.709 (18.00)	.496 (12.60)
10	.874 (22.20)	.661 (16.80)
12	1.039 (26.40)	.827 (21.00)
14	1.205 (30.60)	.992 (25.20)
16	1.370 (34.80)	1.157 (29.40)
18	1.732 (44.00)	1.520 (38.60)
20	1.898 (48.20)	1.685 (42.80)
22	2.063 (52.40)	1.850 (47.00)
24	2.228 (56.60)	2.016 (51.20)

SEE SHEET 1 FOR FLANGE MOUNT

SEE SHEET 1 EC NO: UCP2014-0298 DRAWN: NGUYEN CHKD: BELL APPR: FSMITH 2013/08/02 2013/08/02 2013/08/16	QUALITY SYMBOLS 	GENERAL TOLERANCES (UNLESS SPECIFIED) <table border="1"> <tr> <td></td> <td>mm</td> <td>INCH</td> </tr> <tr> <td>4 PLACES</td> <td>± .010</td> <td>± .0004</td> </tr> <tr> <td>3 PLACES</td> <td>± .010</td> <td>± .0004</td> </tr> <tr> <td>2 PLACES</td> <td>± .025</td> <td>± .0016</td> </tr> <tr> <td>1 PLACE</td> <td>± .036</td> <td>± .0014</td> </tr> <tr> <td>0 PLACE</td> <td>±</td> <td>±</td> </tr> </table>		mm	INCH	4 PLACES	± .010	± .0004	3 PLACES	± .010	± .0004	2 PLACES	± .025	± .0016	1 PLACE	± .036	± .0014	0 PLACE	±	±	DIMENSION STYLE IN/MM SCALE 2:1 DESIGN UNITS METRIC THIRD ANGLE PROJECTION
		mm	INCH																		
	4 PLACES	± .010	± .0004																		
	3 PLACES	± .010	± .0004																		
2 PLACES	± .025	± .0016																			
1 PLACE	± .036	± .0014																			
0 PLACE	±	±																			
DRAWN BY GEP DATE 1994/08/01 CHECKED BY R/JF DATE 1994/08/01 APPROVED BY FSMITH DATE 2011/09/12	MATERIAL NO. SEE CHART DOCUMENT NO. SDA-44483-**** SHEET NO. 2 OF 3	TITLE RIGHT ANGLE HEADER ASSY SELECTIVELY LOADED MINI-FIT T.P.A. SERIES <b>molex</b>																			
DRAFT WHERE APPLICABLE MUST REMAIN WITHIN DIMENSIONS		THIS DRAWING CONTAINS INFORMATION THAT IS PROPRIETARY TO MOLEX INCORPORATED AND SHOULD NOT BE USED WITHOUT WRITTEN PERMISSION																			
REV E4																					

ITEM NO.	CHARACTERISTIC DESCRIPTION	CKT. SIZE	TERMINAL VERSION REQUIRED AT EACH CIRCUIT LOCATION: (SEE CODES BELOW)																								PACKAGING TYPE
			1	2	3	4	5	6	7	8	9	10	11	12	13	14	15	16	17	18	19	20	21	22	23	24	
J	44483-0001	I2A1C	I2	5	5	5	6	5	5	5	5	5	-	5	5	-	-	-	-	-	-	-	-	-	-	BULK	
	44483-0002	I2A2C	I2	5	5	5	6	5	5	5	5	5	5	5	5	-	-	-	-	-	-	-	-	-	-	BULK	
	44483-0003	I2A1C	I2	5	5	5	6	5	5	5	5	5	5	5	-	-	-	-	-	-	-	-	-	-	-	TRAY	
	44483-0004	O4A2C	O4	5	5	6	5	-	-	-	-	-	-	-	-	-	-	-	-	-	-	-	-	-	-	BULK	
I	44483-0005	O4A2A	O4	7	7	8	7	-	-	-	-	-	-	-	-	-	-	-	-	-	-	-	-	-	-	BULK	
	44483-0006	I2A1C	I2	5	5	5	6	-	5	5	5	5	5	5	5	-	-	-	-	-	-	-	-	-	-	BULK	
	44483-0007	I6A2A	I6	7	7	8	7	7	8	8	7	8	7	8	7	8	7	7	8	-	-	-	-	-	-	BULK	
	44483-0008	I2A1C	I2	5	-	6	6	-	5	-	5	5	5	5	-	-	-	-	-	-	-	-	-	-	-	BULK	
H	44483-0009	O6A2C	O6	5	5	6	5	5	5	-	-	-	-	-	-	-	-	-	-	-	-	-	-	-	-	BULK	
	44483-0010	O6A1C	O6	5	-	6	5	-	5	-	-	-	-	-	-	-	-	-	-	-	-	-	-	-	-	BULK	
	44483-0011	I2A3A	I2	7	7	7	7	7	7	7	7	7	-	7	7	-	-	-	-	-	-	-	-	-	-	BULK	
	44483-0012	I2A1C	I2	5	5	5	6	5	5	5	5	5	-	5	5	-	-	-	-	-	-	-	-	-	-	BULK	
G	44483-0013	I2A1C	I2	5	5	5	6	-	5	5	5	5	-	5	-	-	-	-	-	-	-	-	-	-	-	TRAY	
	44483-0014	I2A4D	I2	7	7	7	7	7	7	5	7	7	7	7	7	-	-	-	-	-	-	-	-	-	-	TRAY	
	44483-0015	I2B3A	I2	-	7	7	7	7	-	-	7	7	-	7	7	-	-	-	-	-	-	-	-	-	-	TRAY	
	44483-0016	I2A2C	I2	6	6	5	5	6	6	6	6	5	5	6	6	-	-	-	-	-	-	-	-	-	-	TRAY	
F	44483-0017	O4A1C	O4	-	5	6	5	-	-	-	-	-	-	-	-	-	-	-	-	-	-	-	-	-	-	TRAY	
	44483-0018	O4A1C	O4	5	-	6	5	-	-	-	-	-	-	-	-	-	-	-	-	-	-	-	-	-	-	TRAY	
	44483-0019	O4A1C	O4	5	5	6	-	-	-	-	-	-	-	-	-	-	-	-	-	-	-	-	-	-	-	TRAY	



- NOTES:
- MATERIAL:  
HOUSING: POLYSESTER, UNFILLED, UL94 V-0, COLOR: BLACK  
TERMINAL: BRASS
  - FINISH (TERMINAL):  
SELECT GOLD = .000030/(.00076) MIN. GOLD OVER .000100/(.00254) MIN. SELECT MATTE TIN OVER .000050/(.00127) MIN. NICKEL OVERALL  
MATTE TIN = .000100/(0.00254) MIN MATTE TIN OVER .000050/(0.00127) MIN NICKEL OVERALL
  - PRODUCT SPECIFICATION: PS-5556-003
  - PACKAGING: SEE CHART  
TRAY PACKED PER: PK-44483-001  
BULK PACKED PER: PK-30070-001
  - PART MATES WITH MINI-FIT T.P.A. RECEPTACLE 30067-\*.  
FLANGE MOUNT PART IS DESIGNED FOR USE WITH #4 OR M3 SELF TAPPING SCREWS.
  - SEE CHART ABOVE FOR STANDARD PIN, GROUND PIN AND VOID LOCATIONS.
  - PARTS ARE NOT TO BE MATED OR UNMATED WHILE CIRCUITS ARE LIVE.
  - PART IS NOT DESIGNED FOR CURRENT SHARING.
  - ITEM NUMBERS PRECEDED BY AND "X" IN THE CHART ABOVE ARE NOT AVAILABLE.
  - PART CONFORMS TO CLASS "B" REQUIREMENTS OF COSMETIC SPECIFICATION PS-45499-002.
  - DISCOLORATION IN THE BANDOLIER CARRIER AREA OF THE PIN IS INHERENT TO THE PLATING PROCESS AND IS DUE TO THE MASKING EFFECT OF THE CARRIER. THIS DISCOLORATION IS IN A NON-FUNCTIONAL AREA OF THE PIN AND WILL NOT AFFECT THE PERFORMANCE OF THE HEADER ASSEMBLY.
  - FORMING MARKS ARE ACCEPTABLE.

PIN. I.D. CODES FOR CHART ABOVE	
PIN TYPE & PLATING (SEE NOTE 2)	
"-"	= VOID LOC.
"5"	= STANDARD PIN, SELECT GOLD
"6"	= GROUNDING PIN, SELECT GOLD
"7"	= STANDARD PIN, MATTE TIN
"8"	= GROUNDING PIN, MATTE TIN

SEE SHEET 1 EC NO: UCP2014-0298 DRAWINGUYEN 2013/08/02 CHKD:JBELL 2013/08/02 APPR:FSMITH 2013/08/16	QUALITY SYMBOLS	DESCRIPTION
	▽=0	
	▽=0	
	▽=0	
E4	REV	

GENERAL TOLERANCES (UNLESS SPECIFIED)	
	IN/CH
4 PLACES	± .010
3 PLACES	± .010
2 PLACES	± .010
1 PLACE	± .036
0 PLACE	± .036
ANGULAR ±1/2°	
DRAFT WHERE APPLICABLE MUST REMAIN WITHIN DIMENSIONS	

DIMENSION STYLE	
IN/MM	
DRAWN BY	DATE
GEP	1994/08/01
CHECKED BY	DATE
RJF	1994/08/01
APPROVED BY	DATE
FSMITH	2011/09/12

SCALE	DESIGN UNITS	THIRD ANGLE PROJECTION
1:1	METRIC	
TITLE		
RIGHT ANGLE HEADER ASSY SELECTIVELY LOADED MINI-FIT T.P.A. SERIES		
<b>molex</b>		
MATERIAL NO.	DOCUMENT NO.	SHEET NO.
SEE CHART	SDA-44483-****	3 OF 3
SIZE THIS DRAWING CONTAINS INFORMATION THAT IS PROPRIETARY TO MOLEX INCORPORATED AND SHOULD NOT BE USED WITHOUT WRITTEN PERMISSION		



Компания «ЭлектроПласт» предлагает заключение долгосрочных отношений при поставках импортных электронных компонентов на взаимовыгодных условиях!

Наши преимущества:

- Оперативные поставки широкого спектра электронных компонентов отечественного и импортного производства напрямую от производителей и с крупнейших мировых складов;
- Поставка более 17-ти миллионов наименований электронных компонентов;
- Поставка сложных, дефицитных, либо снятых с производства позиций;
- Оперативные сроки поставки под заказ (от 5 рабочих дней);
- Экспресс доставка в любую точку России;
- Техническая поддержка проекта, помощь в подборе аналогов, поставка прототипов;
- Система менеджмента качества сертифицирована по Международному стандарту ISO 9001;
- Лицензия ФСБ на осуществление работ с использованием сведений, составляющих государственную тайну;
- Поставка специализированных компонентов (Xilinx, Altera, Analog Devices, Intersil, Interpoint, Microsemi, Aeroflex, Peregrine, Syfer, Eurofarad, Texas Instrument, Miteq, Cobham, E2V, MA-COM, Hittite, Mini-Circuits, General Dynamics и др.);

Помимо этого, одним из направлений компании «ЭлектроПласт» является направление «Источники питания». Мы предлагаем Вам помощь Конструкторского отдела:

- Подбор оптимального решения, техническое обоснование при выборе компонента;
- Подбор аналогов;
- Консультации по применению компонента;
- Поставка образцов и прототипов;
- Техническая поддержка проекта;
- Защита от снятия компонента с производства.



#### Как с нами связаться

**Телефон:** 8 (812) 309 58 32 (многоканальный)

**Факс:** 8 (812) 320-02-42

**Электронная почта:** [org@eplast1.ru](mailto:org@eplast1.ru)

**Адрес:** 198099, г. Санкт-Петербург, ул. Калинина, дом 2, корпус 4, литера А.