



Delivering streamlined behind-panel routings with MT, MPO/MTP* interfaces and IP67-sealed harsh-environmental protection with LC interfaces, Optical Electro Magnetic Interference (EMI) Shielding Adapters are ideal in networking and industrial applications

Optical Electro Magnetic Interference (EMI) shielding adapters are designed to address mechanical-design requirements limiting EMI and Radio Frequency Interference (RFI) emissions from front panels or enclosures. The adapters are constructed of either all diecast housings or as a half die-cast, half polymer housing.

Housings have an EMI gasket that seals the adapters to the panel. EMI adapters increase the shielding effectiveness while enhancing the front-panel aesthetics compared to traditional plastic adapters.

Features and Benefits

MPO to MT/ HMBT™ and IP67 Sealed LC to LC Adapters

MPO (MTP*) front-interface to MT or HMBT™ back-interface adapter styles (106114 only)

Provide flexibility in fiber routing and reduce space requirements inside the box

IP67 sealed, ruggedized duplex LC interface adapters with latching shutters (106127-0100 and 10627-0110 only)

Shutter latches to compress the seal and protect from moisture and dust ingress. Provides harsh-environment sealing

All EMI Adapters

Metal die-cast housings

Provide Electro Magnetic Interference (EMI) protection

EMI gaskets included

Provide Electro Magnetic Interference (EMI) seal between the adapter and mounting surface

Safety shutters included

Provides dust protection, eye safety and reduces EMI when no connector is installed

Screw- and snap-mount styles available

Provides mounting flexibility

Single and multiple-port adapter design (accepts one or four connectors)

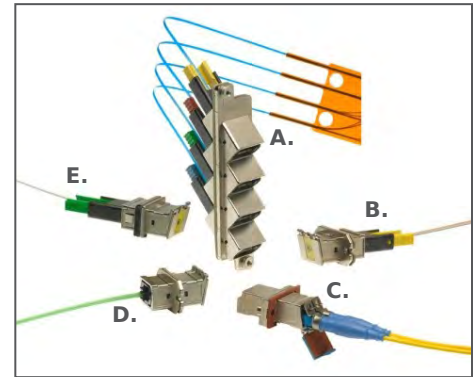
Provides for design flexibility

Ceramic or phosphor bronze alignment sleeves (where applicable)

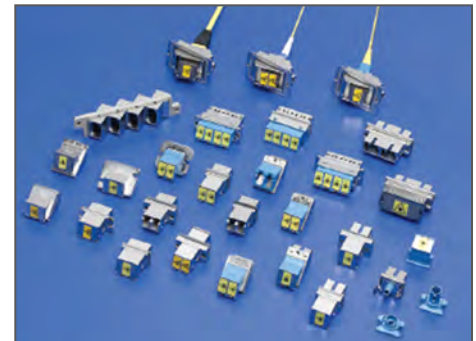
Accommodate singlemode (SM) and multimode (MM) performance

Optical EMI Shielding Adapters

- 106114** MPO/MTP* to MT or HMBT™ Adapters
- 106127** LC Duplex to LC Duplex Sealed Ruggedized Adapter
- 106114** MPO Adapter
- 106115** LC Duplex Adapters
- 106116** SC Adapter
- 106123** LC Quad Adapters



- A. MPO (MTP*) to HMBT™ Quad Adapter
- B. MPO (MTP*) to HMBT™ Simplex Adapter with Shutter
- C. LC Duplex Sealed Adapter with Latching Shutter
- D. MPO (MTP*) to MT Simplex Adapter with Shutter
- E. MPO (MTP*) to HMBT™ Simplex Adapter with Shutter



MPO (MTP*) Adapters Series numbers
 106115 LC Duplex Adapters
 106116 SC Adapter
 106123 LC Quad Adapters

* MTP is a registered trademark of US Conec, Inc.

Specifications

Reference Information

Packaging:

MTP tray, LC bag

Mates With:

MPO (MTP*), LC duplex connectors

Use With:

Optical Cable Assemblies and
FlexPlane™ Optical Circuitry

Designed In: Millimeters

RoHS: Yes

Halogen Free: Yes

Mechanical

Durability (min.):

200 mates and de-mates

Physical

Housing:

Metal (Zinc) for EMI versions

Alignment Sleeve:

Phosphor Bronze or Zirconia

Ceramic

Plating:

Electro-less Nickel

Operating Temperature:

-40 to +85°C

Applications

Telecommunication Applications

- Data Centers
- Hubs
- Servers
- Routers

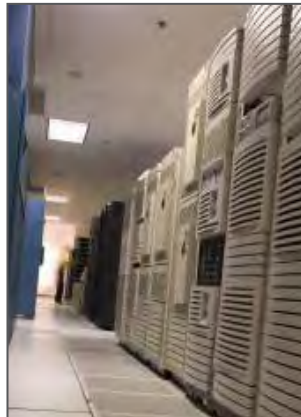
Industrial Applications

- Test equipment

Aerospace/Defense Applications

Storage

- ATM equipment
- Gigabit Ethernet testing equipment



High-End Servers



ATM Equipment

Ordering Information
MPO (MTP*) to MT and HBMT™ Adapters

Order No.	Cable Type	Mount Style	Shutter	Front Interface	Back Interface
106114-1150	Simplex	Screw	One Side	MPO (MTP*)	MT
106114-1160		Staggered Screw			
106114-1510		Screw			
106114-1520		Snap			
106114-1530	Quad	Screw	Latching	LC Duplex Ruggedized	LC Duplex Ruggedized, Ceramic Alignment Sleeve with IP67 Sealed Gasket
106127-0100	Duplex				
106127-0110					LC Duplex Ruggedized, Phosphor Bronze Alignment Sleeve with IP67 Sealed Gasket

LC EMI Adapters

Order No.	Cable Type	Mount Style	Mount Angle	Shutter	Mount From	
106115-3100	Duplex	Screw	45°	One Side	Front	
106115-4100		Snap				
106115-1100		Screw	Straight	None		
106115-1110				One Side		
106115-1120				Two Sides		
106115-2100				None		
106115-2110		Snap	Straight	One Side		
106115-2120				Two Sides		
106115-3200		Single Screw	45°	One Side		Rear
106123-0500		Snap	Straight			Front
106123-0600	Screw					
106123-0700						

MPO EMI Adapters

Order No.	Cable Type	Mount Style	Mount Angle	Shutter	Mount From
106114-1100	Simplex	Screw	Straight	One Side	Front
106114-1200		Snap			
106114-3000		Screw			
106114-4000		Snap			
106114-0100		SingleScrew			
106114-3200	Quad	Screw	45°	None	Rear

SC EMI Adapters

Order No.	Cable Type	Mount Style	Mount Angle	Shutter	Mount From
106116-2000	Simplex	Snap	Straight	One Side	Front
106116-2100		Screw			
106116-4500		Single Screw	45°		Rear
106116-1000	SC Duplex EMI Adapter	Snap/Screw	Straight	Snap-On	Front



Компания «ЭлектроПласт» предлагает заключение долгосрочных отношений при поставках импортных электронных компонентов на взаимовыгодных условиях!

Наши преимущества:

- Оперативные поставки широкого спектра электронных компонентов отечественного и импортного производства напрямую от производителей и с крупнейших мировых складов;
- Поставка более 17-ти миллионов наименований электронных компонентов;
- Поставка сложных, дефицитных, либо снятых с производства позиций;
- Оперативные сроки поставки под заказ (от 5 рабочих дней);
- Экспресс доставка в любую точку России;
- Техническая поддержка проекта, помощь в подборе аналогов, поставка прототипов;
- Система менеджмента качества сертифицирована по Международному стандарту ISO 9001;
- Лицензия ФСБ на осуществление работ с использованием сведений, составляющих государственную тайну;
- Поставка специализированных компонентов (Xilinx, Altera, Analog Devices, Intersil, Interpoint, Microsemi, Aeroflex, Peregrine, Syfer, Eurofarad, Texas Instrument, Miteq, Cobham, E2V, MA-COM, Hittite, Mini-Circuits, General Dynamics и др.);

Помимо этого, одним из направлений компании «ЭлектроПласт» является направление «Источники питания». Мы предлагаем Вам помощь Конструкторского отдела:

- Подбор оптимального решения, техническое обоснование при выборе компонента;
- Подбор аналогов;
- Консультации по применению компонента;
- Поставка образцов и прототипов;
- Техническая поддержка проекта;
- Защита от снятия компонента с производства.



Как с нами связаться

Телефон: 8 (812) 309 58 32 (многоканальный)

Факс: 8 (812) 320-02-42

Электронная почта: org@eplast1.ru

Адрес: 198099, г. Санкт-Петербург, ул. Калинина, дом 2, корпус 4, литера А.