

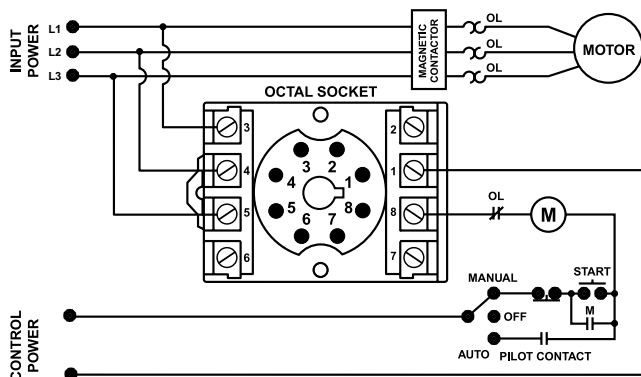
## 201A-AU SERIES

### 3-Phase Voltage/Phase Monitor

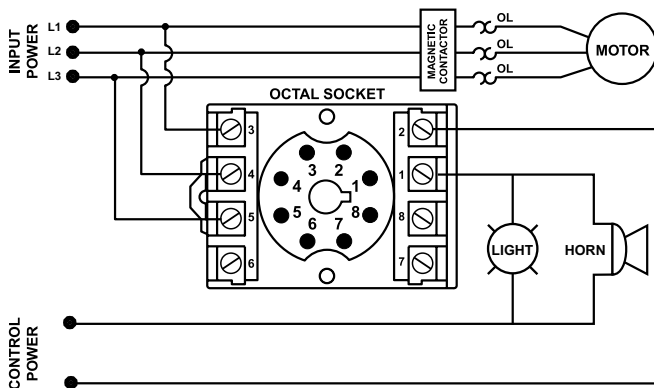


### Wiring Diagram

201A-AU WITH MOTOR CONTROL



201A-AU WITH ALARM CONTROL



### Description

The 201A-AU is a 3-phase, auto-ranging, dual-range voltage monitor that protects 190-480VAC, 50/60Hz motors regardless of size. The product provides a user selectable nominal voltage setpoint and the voltage monitor automatically selects between the 200V and 400V range. Additional adjustment knobs allow the user to set a 1-30 second trip delay, a manual restart or 1-500 second restart delay and a 2-8% voltage unbalance trip point. The Model 201A-AU includes advanced single LED diagnostics, where color and light patterns distinguish between faults and normal conditions.

This unique microcontroller-based voltage and phase-sensing device constantly monitors the 3-phase voltages to detect harmful power line conditions. When a harmful condition is detected, the 201A-AU's output relay is deactivated after a specified trip delay. The output relay reactivates after power line conditions return to acceptable levels for a specified amount or restart delay time (or manual reset).

### Features & Benefits

FEATURES	BENEFITS
<b>Proprietary microcontroller based circuitry</b>	Constant monitoring of loss of any phase, low voltage, high voltage, voltage unbalance, phase reversal, rapid cycling, harmful power line conditions
<b>Compact design for 8-pin; DIN rail or surface mount</b>	Allows flexibility in panel installation
<b>Auto-sensing wide voltage range</b>	Automatically senses system voltage between 190 - 480VAC. Saves setup time.
<b>Advanced LED diagnostics</b>	Quick visual indicator for cause of trip.
<b>Adjustable voltage unbalance trip setting</b>	Allows compatibility with a variety of motors and reduces nuisance tripping.
<b>Adjustable trip &amp; restart delay settings</b>	Prevent nuisance tripping due to rapidly fluctuating power line conditions.

### Accessories



#### OT08PC Octal 8-pin Socket

8-pin 35mm DIN rail or surface mount. Rated at 10A @ 600VAC. Surface mounted with two #6 screws or snaps onto a 35 mm DIN rail.

### Ordering Information

MODEL	LINE VOLTAGE	DESCRIPTION
201A-AU	190-480VAC	DIN rail or surface mountable
201575-AU	475-600VAC	DIN rail or surface mountable
201A-AU-OT	190-480VAC	Sold with OT08PC socket
201-575-AU-OT	475-600VAC	Sold with OT08PC socket

## 201A-AU SERIES

### Specifications

<b>Frequency</b>	50/60Hz
<b>Functional Characteristics</b>	
<b>Low Voltage (% of setpoint)</b>	
<b>Trip</b>	90% ±1%
<b>Reset</b>	93% ±1%
<b>High Voltage (% of setpoint)</b>	
<b>Trip</b>	110% ±1%
<b>Reset</b>	107% ±1%
<b>Voltage Unbalance (NEMA)</b>	
<b>Trip</b>	2-8% adjustable
<b>Reset</b>	Trip Setting Minus 1% (5-8%) Trip Setting Minus 0.5% (2-4%)
<b>Trip Delay Time</b>	
<b>High, Low and Unbalanced Voltage</b>	
<b>Single-Phasing Faults</b>	1-30 seconds adjustable
<b>Restart Delay Time</b>	1 second fixed
<b>After a Fault</b>	
<b>After a Complete Power Loss</b>	Manual, 1-500 seconds adj.
<b>Output Characteristics</b>	
<b>Output Contact Rating (1-Form C)</b>	
<b>Pilot Duty</b>	480VA @ 240VAC, B300
<b>General Purpose</b>	10A @ 240VAC
<b>General Characteristics</b>	
<b>Ambient Temperature Range</b>	
<b>Operating</b>	-40° to 70°C (-40° to 158°F)
<b>Storage</b>	-40° to 80°C (-40° to 176°F)
<b>Trip &amp; Reset Accuracy</b>	±1%
<b>Maximum Input Power</b>	5 W
<b>Relative Humidity</b>	10-95%, non-condensing per IEC 68-2-3
<b>Terminal Torque</b>	12 in.-lbs. (for OT08-PC socket)
<b>Wire Gauge</b>	12-22 AWG solid or stranded

### Standards Passed

<b>Electrostatic Discharge (ESD)</b>	IEC 61000-4-2, Level 3, 6kV contact, 8kV air
<b>Radio Frequency Immunity, Radiated</b>	150 MHz, 10V/m
<b>Fast Transient Burst</b>	IEC 61000-4-4, Level 3, 3.5kV input power and controls

### Surge

<b>IEC</b>	IEC 61000-4-5, Level 3, 4kV line-to-line; Level 4, 4kV line-to-ground
<b>ANSI/IEEE</b>	C62.41 Surge and Ring Wave Compliance to a level of 6kV line-to-line
<b>Hi-potential Test</b>	Meets UL508 (2 x rated V +1000V for 1 min.)

### Safety Marks

#### UL (OT08PC octal socket required)

UL508 (File #E68520)

#### CE

IEC 60947-6-2

#### Enclosure

Polycarbonate

#### Dimensions

**H** 44.45 mm (1.75"); **W** 60.325 mm (2.375");  
**D** 104.775 mm (4.125") (with socket)

#### Weight

0.7 lb. (11.2 oz., 317.51 g)

#### Mounting Method

DIN rail or surface mount (plug in to OT08PC socket)

#### Socket Available

OT08PC (UL Rating 600V)

The 600V socket can be surface mounted or installed on DIN Rail.

Note: Manufacturer's recommended screw terminal torque for the OT Series Octal Sockets is 12 in.-lbs.

**Must use Model OT08PC socket for UL Rating!**



Компания «ЭлектроПласт» предлагает заключение долгосрочных отношений при поставках импортных электронных компонентов на взаимовыгодных условиях!

Наши преимущества:

- Оперативные поставки широкого спектра электронных компонентов отечественного и импортного производства напрямую от производителей и с крупнейших мировых складов;
- Поставка более 17-ти миллионов наименований электронных компонентов;
- Поставка сложных, дефицитных, либо снятых с производства позиций;
- Оперативные сроки поставки под заказ (от 5 рабочих дней);
- Экспресс доставка в любую точку России;
- Техническая поддержка проекта, помощь в подборе аналогов, поставка прототипов;
- Система менеджмента качества сертифицирована по Международному стандарту ISO 9001;
- Лицензия ФСБ на осуществление работ с использованием сведений, составляющих государственную тайну;
- Поставка специализированных компонентов (Xilinx, Altera, Analog Devices, Intersil, Interpoint, Microsemi, Aeroflex, Peregrine, Syfer, Eurofarad, Texas Instrument, Miteq, Cobham, E2V, MA-COM, Hittite, Mini-Circuits, General Dynamics и др.);

Помимо этого, одним из направлений компании «ЭлектроПласт» является направление «Источники питания». Мы предлагаем Вам помощь Конструкторского отдела:

- Подбор оптимального решения, техническое обоснование при выборе компонента;
- Подбор аналогов;
- Консультации по применению компонента;
- Поставка образцов и прототипов;
- Техническая поддержка проекта;
- Защита от снятия компонента с производства.



#### Как с нами связаться

**Телефон:** 8 (812) 309 58 32 (многоканальный)

**Факс:** 8 (812) 320-02-42

**Электронная почта:** [org@eplast1.ru](mailto:org@eplast1.ru)

**Адрес:** 198099, г. Санкт-Петербург, ул. Калинина, дом 2, корпус 4, литера А.