



# 2100 series

## Miniature Electropneumatic Timing Relay

### CE

Users should thoroughly review the technical data before selecting a product part number. It is recommended that users also seek out the pertinent approvals files of the agencies/laboratories and review them to ensure the product meets the requirements for a given application.

### Design Features

- High Repeat Accuracy over voltage and temperature extremes
- Hermetically sealed units are designed for high shock and vibration applications
- Instant recycling – easy linear adjustment
- Exclusive Dial Head adjustment – no needle valves
- Delay ranges from milliseconds to 3 minutes
- DPDT contacts

### Design & Construction

**Sealed patented timing head** circulates air under controlled pressure through a variable orifice to provide adjustable timing. Circular-path Dial Head principle replaces traditional needle valve.

**Snap-action switch assembly** provides sustained contact pressure during timing cycles. Specially designed over center mechanism assures flutter-free load transfer after extended delay periods.

**Precision-wound solenoid assembly** supplies the basic motive force when the control circuit is closed.

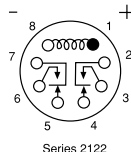
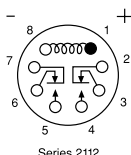
These assemblies are mounted in a rigid self-supporting framework within a steel enclosure. This rugged construction assures permanent alignment of all operating members, the key to this unit's long trouble-free operation.

### Operation

**Series 2112 (On-Delay)** - Applying rated voltage to the solenoid coil starts the preset time delay. At the end of the delay period the NC contacts break and the NO contacts make. Contacts remain in this position until the coil is de-energized, when the switch instantaneously returns to its original position. De-energizing the coil, either during or after the delay period, will immediately (within 25 msec.) recycle the unit. It will then provide another full delay period on re-energization.

**Series 2122 (Off-Delay)** - Applying rated voltage to the coil for at least 75 msec. (for accurate timing) will instantaneously transfer the switch, breaking the NC contacts and making the NO contacts. Contacts remain in this position as long as the coil is energized. The preset time delay period begins as soon as the coil is de-energized, at the end of which the switch returns to its original position.

**No power is required during the timing period.** Re-energizing the coil, either during or after the delay period, will immediately start a new cycle with full delay period.



**Operation** (Listed values at nom. voltage, 25°C unless noted).

#### Operating Mode:

**2112:** On-delay (delay on pull-in); **2122:** Off-delay (delay on drop-out)

**Timing Adjustment:** All standard models offer easy linear adjustment over one of nine timing ranges listed below. For applications requiring frequent readjustment, the external knob model with calibrated dial is recommended. For tamper-proof installation or where readjustment is infrequent, the internal key model may be preferred. This model requires removal of the cover plate for timing adjustment. Hermetically sealed models provide a slotted adjusting screw under the cap nut on the top cover.

#### Timing Ranges:

Code	Range	Code	Range
A	.03 to .1 sec.	G	2.0 to 60.0 sec.
B	.1 to .3 sec.	H	5.0 to 120.0 sec.
C	.15 to 1.0 sec.	J	5.0 to 180.0 sec.
D	.375 to 3.0 sec.	K	1.5 to 30.0 cycles
E	.75 to 10.0 sec.	L	3.0 to 120.0 cycles
F	1.0 to 30.0 sec.		

#### Repeat Accuracy: NORMAL VERTICAL POSITION

±5% at 25°C; ±7% at 85°C; ±8% at -55°C.

The average time between -55°C and 85°C will be within ±20% of the average @ 25°C with a proportionally reduced effect at lesser extremes.

In extremely short delay settings an additional 8 msec. variation may result on AC models due to "half cycle" alternating current effect.

**Setting Tolerance:** Factory time setting, when specified, subject to additional +5% tolerance.

#### Position Sensitivity:

**HORIZONTAL POSITION:** Approximately 5% increase from the initial time in the vertical position.

**INVERTED POSITION:** Approximately 10% increase from the initial time in the vertical position.

**Reset Time:** 2112 Series: 25 msec.; 2122 Series: 75 msec.

**Relay Release Time:** 25 msec. (2112 Series)

**Relay Operate Time:** 75 msec. (2122 Series)

#### Operating Voltage: Coil Data

Code	Nominal Operating Voltage	Resistance Ohms ±10%	Code	Nominal Operating Voltage	Resistance Ohms ±10%
M	12VDC	30	S	120V 60 Hz	190 (2112 Series)
N	28VDC	131	S	120V 60Hz	285 (2122 Series)
P	48VDC	500	T	240V 60Hz	765
R	110VDC	3200	U	115V 400Hz	2600
Y	125VDC	3380			

**Transients:** Insensitive to transients of ±1500 VAC for 10 milliseconds

**Dielectric:** 1000V RMS @ 60Hz between non-connected terminals.

#### Contact Rating (DPDT Contacts):

	30V DC	110V DC	120V 60Hz	120V 400Hz	240V 60Hz
<b>Inductive (Amps)</b>	2	.75	3	2	1.5
<b>Resistive (Amps)</b>	10	1	10	10	5

Based on 100,000 operations electrical, 1,000,000 mechanical. Inductive and capacitive load should not have inrush currents that exceed five times normal operating load.

**Ambient Temperature Range:** -55°C to +85°C

**Weight:** Maximum, any unit - 17 ozs.

**Mounting/Terminals:** Chassis mounting tabs, octal plugs and external (-4) or internal (-5) adjustment. Panel mounting back plate, internal adjustment, and solder hook terminals (-9).



--4



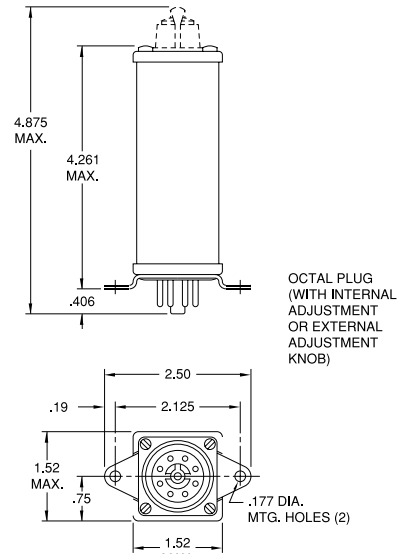
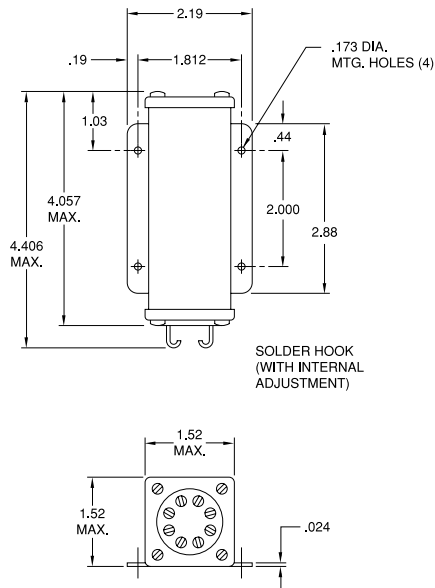
--5



--9

**These are minimum standards; where more severe environmental conditions must be met, please consult the factory.**

**Outline Dimensions for Industrial Models (Dimensions in inches. Multiply by 25.4 to obtain millimeters.)**



**Ordering Information for Industrial Models**

Typical Part No. ➤					21	1	2	D	4	N	B
<b>1. Basic Series:</b> 21 = 2100 Miniature electropneumatic timing relay											
<b>2. Operation:</b> 1 = On-delay                      2 = Off-delay											
<b>3. Contact Arrangement:</b> 2 = DPDT (2 form C)											
<b>4. Operating Voltage:</b> A = AC                      D = DC											
<b>5. Physical Characteristics:</b>											
Code	Enclosure	Adjustment	Connector	Mounting							
4 =	Unsealed	External Knob	Octal Plug	Chassis Mount							
5 =	Unsealed	Internal Key	Octal Plug	Chassis Mount							
9 =	Unsealed	Internal Key	Solder Hook	Panel Mount Plate							
<b>6. Coil Voltage:</b> M = 12VDC                      N = 28VDC                      P = 48VDC                      R = 110VDC                      Y = 125VDC S = 120VAC, 50/60 Hz.    T = 240VAC, 60 Hz.											
<b>7. Timing Range:</b> A = .03 to .1 sec.            C = .15 to 1.0 sec.            E = .75 to 10.0 sec.            H = 5.0 to 120.0 sec.            K = 1.5 to 30.0 cycles B = .1 to .3 sec.            D = .375 to 3.0 sec.            F = 1.0 to 30.0 sec.            J = 5.0 to 180.0 sec.            L = 3.0 to 120.0 cycles											

**Our authorized distributors are more likely to maintain the following items in stock for immediate delivery..**

None at present.

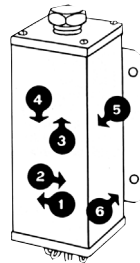
## Specifications for MIL-Spec and Hermetically Sealed Models



**Dielectric:** In accordance with specification MIL-R-6106E (ASG). Also withstands 1,000 Volts RMS at 60 Hz between non-connected terminals.

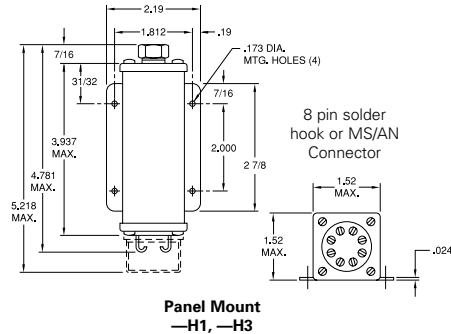
**Other:** Agastat Miniature Timing Relays also conform to applicable Mil-Spec. requirements covering:  
Moisture  
Humidity  
Sand/Dust  
Salt Spray

Ozone  
Sunshine  
Acoustic Noise  
Prolonged Storage

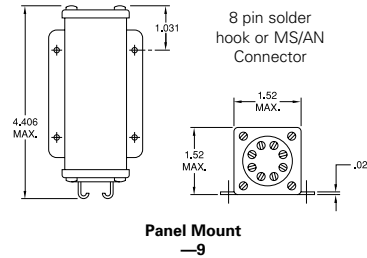


Agastat timing relays perform to military specifications in Patriot missiles.

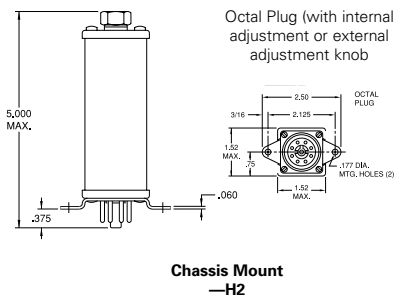
## Outline Dimensions for MIL-Spec and Hermetically Sealed Models (In inches. Multiply by 25.4 for millimeters).



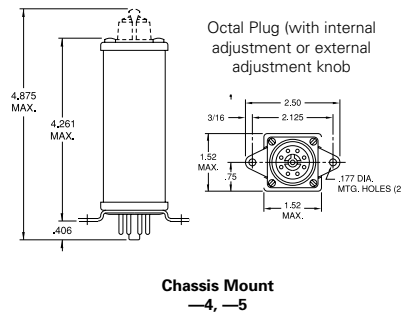
Panel Mount  
—H1, —H3



Panel Mount  
—9



Chassis Mount  
—H2



Chassis Mount  
—4, —5

## Ordering Information for MIL-Spec and Hermetically Sealed Models

Typical Part No. ➤					21	1	2	D	H1	N	B
<b>1. Basic Series:</b> 21 = 2100 Miniature electropneumatic timing relay											
<b>2. Operation:</b> 1 = On-delay                      2 = Off-delay											
<b>3. Contact Arrangement:</b> 2 = DPDT (2 form C)											
<b>4. Operating Voltage:</b> A = AC                              D = DC											
<b>5. Physical Characteristics:</b>											
Code	Enclosure	Adjustment	Connector	Mounting							
H1 =	Hermetically Sealed	External Screw	Solder Hook	Panel Mount Plate							
H2 =	Hermetically Sealed	External Screw	Octal Plug	Chassis Mount							
H3 =	Hermetically Sealed	External Screw	"AN" Connector	Panel Mount Plate							
4 =	Unsealed	External Knob	Octal Plug	Chassis Mount							
5 =	Unsealed	Internal Key	Octal Plug	Chassis Mount							
9 =	Unsealed	Internal Key	Solder Hook	Panel Mount Plate							
<b>6. Coil Voltage:</b>											
M = 12VDC	N = 28VDC	P = 48VDC	R = 110VDC	Y = 125VDC							
S = 120VAC, 50/60 Hz.	T = 240VAC, 60 Hz.	U = 115VAC, 400 Hz.									
<b>7. Timing Range:</b>											
A = .03 to .1 sec.	C = .15 to 1.0 sec.	E = .75 to 10.0 sec.	H = 5.0 to 120.0 sec.	K = 1.5 to 30.0 cycles							
B = .1 to .3 sec.	D = .375 to 3.0 sec.	F = 1.0 to 30.0 sec.	J = 5.0 to 180.0 sec.	L = 3.0 to 120.0 cycles							

Our authorized distributors are more likely to maintain the following items in stock for immediate delivery..

None at present.



Компания «ЭлектроПласт» предлагает заключение долгосрочных отношений при поставках импортных электронных компонентов на взаимовыгодных условиях!

Наши преимущества:

- Оперативные поставки широкого спектра электронных компонентов отечественного и импортного производства напрямую от производителей и с крупнейших мировых складов;
- Поставка более 17-ти миллионов наименований электронных компонентов;
- Поставка сложных, дефицитных, либо снятых с производства позиций;
- Оперативные сроки поставки под заказ (от 5 рабочих дней);
- Экспресс доставка в любую точку России;
- Техническая поддержка проекта, помощь в подборе аналогов, поставка прототипов;
- Система менеджмента качества сертифицирована по Международному стандарту ISO 9001;
- Лицензия ФСБ на осуществление работ с использованием сведений, составляющих государственную тайну;
- Поставка специализированных компонентов (Xilinx, Altera, Analog Devices, Intersil, Interpoint, Microsemi, Aeroflex, Peregrine, Syfer, Eurofarad, Texas Instrument, Miteq, Cobham, E2V, MA-COM, Hittite, Mini-Circuits, General Dynamics и др.);

Помимо этого, одним из направлений компании «ЭлектроПласт» является направление «Источники питания». Мы предлагаем Вам помощь Конструкторского отдела:

- Подбор оптимального решения, техническое обоснование при выборе компонента;
- Подбор аналогов;
- Консультации по применению компонента;
- Поставка образцов и прототипов;
- Техническая поддержка проекта;
- Защита от снятия компонента с производства.



#### Как с нами связаться

**Телефон:** 8 (812) 309 58 32 (многоканальный)

**Факс:** 8 (812) 320-02-42

**Электронная почта:** [org@eplast1.ru](mailto:org@eplast1.ru)

**Адрес:** 198099, г. Санкт-Петербург, ул. Калинина, дом 2, корпус 4, литера А.