

DOUBLE BREAK, SNAP-ACTION, COMMERCIAL & MILITARY GRADES, SUBMINIATURE

MIL-PRF-8805/76 (0.200 inches wide)

OTTO's B3-2XXXX series is a subminiature switch that is qualified to MIL-PRF-8805/76. Designed to switch at least one million mechanical cycles, the B3 surpasses the requirements of the military in these categories: contact resistance less than 25mΩ, contact bounce and overall cycle life. For MIL-PRF-8805/76 requirements, B3-22141 has standard silver with gold contacts, SPDT double break two circuit (Form Z), solder terminals in thermoset case material. Gold plated contacts are available for non-military applications. UL recognized and CSA certified models available.

MIL-PRF-8805/101 (0.156 inches wide)

For your really difficult projects, try OTTO'S B3 series. They are qualified to the OTTO inspired MIL-PRF-8805/101 specification. Only 0.156" thick, think of all those extra 0.044" you can use in those tight ganged jobs. With the B3 series, you can get an extra pole in where only four MIL-PRF-8805/76's fit, with room to spare. Examine the characteristics. With the MIL-PRF-8805/101, the only thing you give up is the extra space the MIL-PRF-8805/76 takes. Cycle life, very low contact resistance, minimal contact bounce... everything is exactly as provided by the MIL-PRF-8805/76 specification.

For MIL-PRF-8805/101 requirements, B3-11141 (PC pin) and B3-12141 (turret) have silver with gold contacts and SPDT double break (Form Z) contact. For commercial applications, a variety of contact forms, special forces and gold plate contacts are available. Most versions are also UL recognized and CSA certified.

Great circuit versatility is available with either switch style. You have your choice of normally open (Form X) or closed (Form Y), 3 terminal (Form C) and 4 terminal (Form Z) SPDT double break.

Features:

- Low level switching capability
- Less than 25mΩ contact resistance
- Up to 8 amps switching capability
- Button accepts actuation directly from a cam
- Choice of 0.156" & 0.200" wide models
- Choice of 6 standard terminal styles or wire leads
- Available in Commercial & Military grades
- Qualified to MIL-PRF-8805/76 & MIL-PRF-8805/101
- UL recognized & CSA certified
- RoHS/WEEE/Reach compliant

APPLICATIONS

OTTO subminiature switches are designed to meet all applications requiring MIL-PRF-8805/76 or MIL-PRF-8805/101 switches. Basic switches are designed for miniature spaces where cam or other limit actuators are used. In addition, toggle, pushbutton and lever actuators are available.



Standard Characteristics/Ratings:

ELECTRICAL RATINGS:

| Circuitry | Load | Sea Level @ 28VDC | 70,000 feet @ 28VDC | Sea Level @ 115VAC, 60/400Hz* |
|---------------------------------------|-------------|-------------------|---------------------|-------------------------------|
| SPST-NO or NC | Resistive | 8A | 8A | 8A |
| Form Z | | 5A | 5A | 5A |
| Form C | | 5A | 5A | 5A |
| Gold Contacts | | 5A | 5A | N/A |
| SPST-NO or NC | Inductive** | 5A | 3A | 5A |
| Form Z | | 3A | 2A | 3A |
| Form C | | 2.5A | 1.5A | 2.5A |
| Gold Contacts | | 3A | 2A | 3A |
| *Applies to commercial grade switches | | | | |
| **L/R = 0.026 | | | | |
| Lamp | | 1A | N/A | 1A |
| Motor | | 5A | N/A | |
| DWV | | 1000Vrms | 400Vrms | |

Low Level: Gold contacts 10mA @ 30mV

Electrical Life: 50,000 cycles at full load

Mechanical Life: 1,000,000 cycles

Seal: Unsealed

Operating Temp Range: -65°C to +125°C

Operating Force: 5 oz +/- 2 oz typical, 6 oz max, or 5 oz min options

Release Force: 1.5 oz min

Operate Point: 0.320 +/- 0.015 inches from mounting holes

Overtravel: 0.004 inches min

Movement Differential: 0.018 +/- 0.008 inches

MATERIALS:

Case: Thermoset, blue

Cover: Thermoplastic, blue

Button: Thermoplastic, black

Terminals: Brass with gold

Contacts: Stationary: Silver with gold plate
Moveable: Silver with gold plate

Terminal Hardware: None provided, optional wires

Mounting Hardware: None provided

SUBMINIATURE BASIC SWITCHES

B3
BASIC SWITCHES

DOUBLE BREAK, SNAP-ACTION, COMMERCIAL & MILITARY GRADES, SUBMINIATURE

CONTACT CONFIGURATIONS:

MIL-PRF-8805/76 and MIL-PRF-8805/101 specify single pole, double throw, double break (Form Z) contact configuration. Available and included in the military specifications are SPNO and SPNC double break, (Form X and Y). The MIL-PRF-8805/101 also specifies SPDT Form C.

MILITARY APPROVALS

(MIL-PRF-8805/76 & MIL-PRF-8805/101)

Certain OTTO B3 models have been qualified to the military specification for these parts. The following is a partial listing. Consult the Cross Reference that appears at the back of this catalog for the latest, complete listings.

| MILITARY NO. | OTTO P/N | MILITARY NO. | OTTO P/N |
|---------------|----------|---------------|----------|
| MS27257-1 | B3-26141 | M8805/101-011 | B3-15141 |
| MS27257-2 | B3-22141 | M8805/101-012 | B3-15142 |
| M8805/101-001 | B3-10064 | M8805/101-013 | B3-13141 |
| M8805/101-002 | B3-10065 | M8805/101-014 | B3-13142 |
| M8805/101-003 | B3-10066 | M8805/101-015 | B3-11131 |
| M8805/101-004 | B3-10067 | M8805/101-016 | B3-11132 |
| M8805/101-005 | B3-10063 | M8805/101-017 | B3-12131 |
| M8805/101-006 | B3-10072 | M8805/101-018 | B3-12132 |
| M8805/101-007 | B3-11141 | M8805/101-019 | B3-15131 |
| M8805/101-008 | B3-11142 | M8805/101-020 | B3-15132 |
| M8805/101-009 | B3-12141 | M8805/101-021 | B3-13131 |
| M8805/101-010 | B3-12142 | M8805/101-022 | B3-13132 |

ORDERING INFORMATION:

B3 Basic

Select the OTTO B3 basic switch to match your specific circuit and mechanical requirements. To order, specify your requirement using the OTTO Part Number Code shown below.

Example: B3-12141 is 0.156" wide, has 1/8" long turret terminals, 5 oz operating force, SPDT double break and silver/gold contacts (MIL-PRF-8805/101).

B3 PART NUMBER CODE

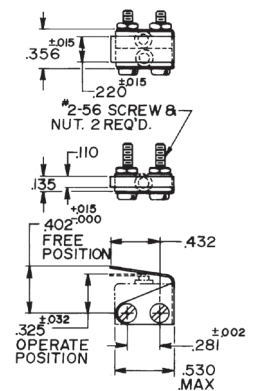
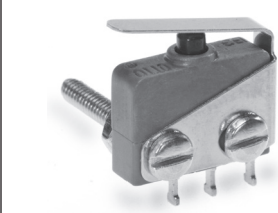
Bold Code items signify conformance to MIL-PRF-8805 specifications.

| Model | Terminal Style or Wire Length | Operating Force | Circuitry | Contact Material |
|--|---|---|---|---|
| B3 - X 1. 0.156" (MIL Grade) 2. 0.200" (MIL Grade) 3. 0.156" (Com'l Grade) 4. 0.200" (Com'l Grade) | X 1. PC Pins 2. Turret, 1/8" lg. 3. Turret, 3/16" lg. 4. Wire Wrap 5. Right Angle PC Pins 6. Solder ① A. With Wires 06.0" lg. B. With Wires 12.0" lg. C. With Wires 18.0" lg. D. With Wires 24.0" lg. E. With Wires 30.0" lg. | X 1. 5 ⁺³ / ₋₂ oz 2. 5 oz min 3. 6 oz max | X 1. SPNO-DB, Form X 2. SPNC-DB, Form Y 3. SPDT, Form C 4. SPDT-DB, Form Z | X 1. Silver/Gold - High Current 2. Silver/Gold - Low Current |

① Available on 0.200" wide models only.



Auxiliary Lever Actuators for B3



| Catalog Number | Number of Poles |
|----------------|-----------------|
| A1-101-02 | 1 |
| A3-102 | 2 |

Supplied with two 2-56 panhead screws, hex nuts and lockwashers.

For additional options, contact factory.

BASIC SWITCHES



Компания «ЭлектроПласт» предлагает заключение долгосрочных отношений при поставках импортных электронных компонентов на взаимовыгодных условиях!

Наши преимущества:

- Оперативные поставки широкого спектра электронных компонентов отечественного и импортного производства напрямую от производителей и с крупнейших мировых складов;
- Поставка более 17-ти миллионов наименований электронных компонентов;
- Поставка сложных, дефицитных, либо снятых с производства позиций;
- Оперативные сроки поставки под заказ (от 5 рабочих дней);
- Экспресс доставка в любую точку России;
- Техническая поддержка проекта, помощь в подборе аналогов, поставка прототипов;
- Система менеджмента качества сертифицирована по Международному стандарту ISO 9001;
- Лицензия ФСБ на осуществление работ с использованием сведений, составляющих государственную тайну;
- Поставка специализированных компонентов (Xilinx, Altera, Analog Devices, Intersil, Interpoint, Microsemi, Aeroflex, Peregrine, Syfer, Eurofarad, Texas Instrument, Miteq, Cobham, E2V, MA-COM, Hittite, Mini-Circuits, General Dynamics и др.);

Помимо этого, одним из направлений компании «ЭлектроПласт» является направление «Источники питания». Мы предлагаем Вам помощь Конструкторского отдела:

- Подбор оптимального решения, техническое обоснование при выборе компонента;
- Подбор аналогов;
- Консультации по применению компонента;
- Поставка образцов и прототипов;
- Техническая поддержка проекта;
- Защита от снятия компонента с производства.



Как с нами связаться

Телефон: 8 (812) 309 58 32 (многоканальный)

Факс: 8 (812) 320-02-42

Электронная почта: org@eplast1.ru

Адрес: 198099, г. Санкт-Петербург, ул. Калинина, дом 2, корпус 4, литера А.