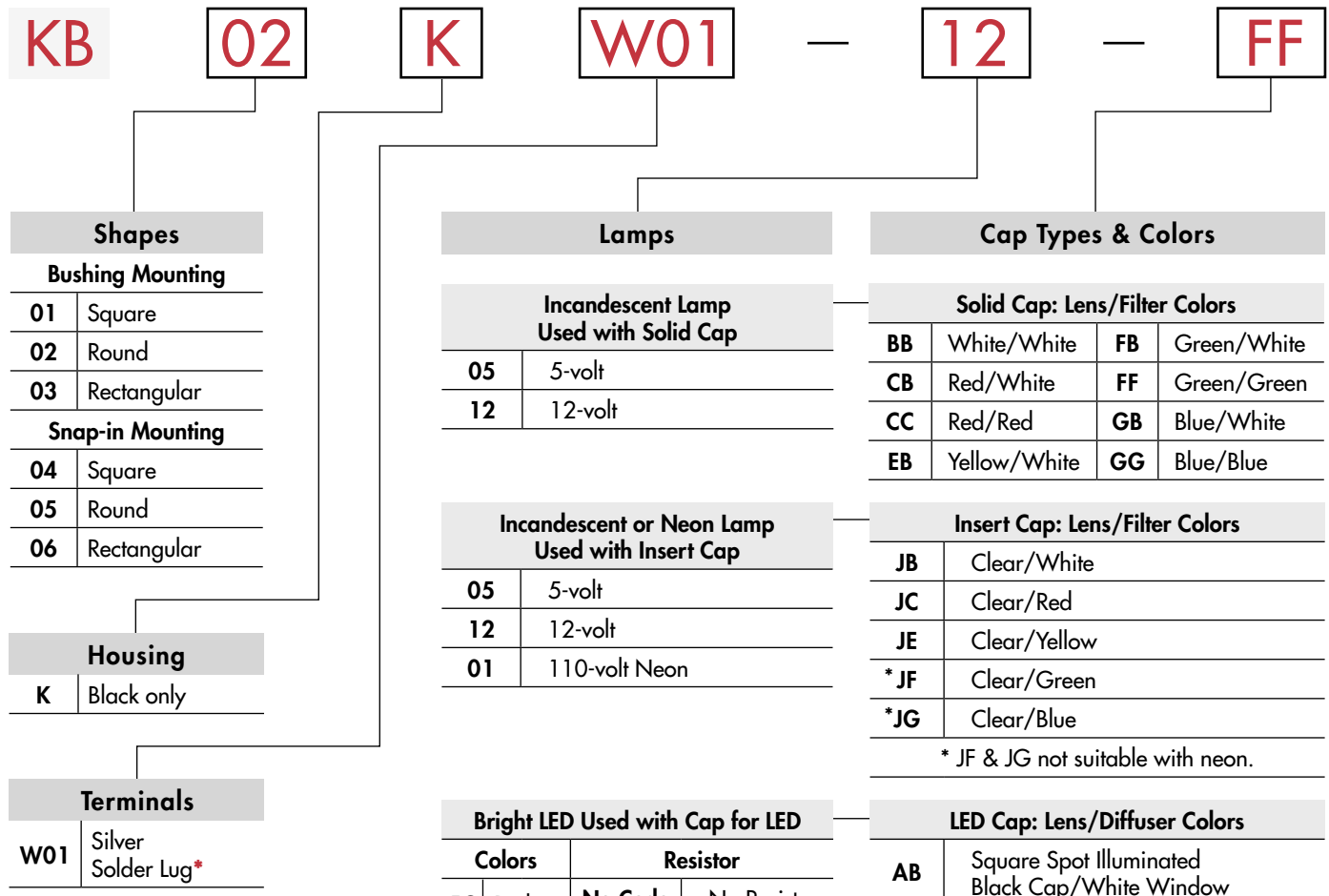


TYPICAL INDICATOR ORDERING EXAMPLE



\* Wire harness & cable assemblies offered only in Americas

| Lamps  |               |         |             |
|--|---------------|---------|-------------|
| Incandescent Lamp Used with Solid Cap          |               |         |             |
| 05   | 5-volt        |         |             |
| 12   | 12-volt       |         |             |
| Incandescent or Neon Lamp Used with Insert Cap |               |         |             |
| 05   | 5-volt        |         |             |
| 12   | 12-volt       |         |             |
| 01   | 110-volt Neon |         |             |
| Bright LED Used with Cap for LED               |               |         |             |
| Colors   | Resistor      |         |             |
| 5C   | Red           | No Code | No Resistor |
| 5D   | Amber         | 05      | 5-volt      |
|  |               | 12      | 12-volt     |
| 5F   | Green         | 24      | 24-volt     |
| Super Bright LED Used with Cap for LED         |               |         |             |
| 6B   | White         |         |             |
| 6F   | Green         |         |             |
| 6G   | Blue          |         |             |

| Cap Types & Colors                |                         |    |             |
|-----------------------------------|-------------------------|----|-------------|
| Solid Cap: Lens/Filter Colors     |                         |    |             |
| BB                                | White/White             | FB | Green/White |
| CB                                | Red/White               | FF | Green/Green |
| CC                                | Red/Red                 | GB | Blue/White  |
| EB                                | Yellow/White            | GG | Blue/Blue   |
| Insert Cap: Lens/Filter Colors    |                         |    |             |
| JB                                | Clear/White             |    |             |
| JC                                | Clear/Red               |    |             |
| JE                                | Clear/Yellow            |    |             |
| *JF                               | Clear/Green             |    |             |
| *JG                               | Clear/Blue              |    |             |
| * JF & JG not suitable with neon. |                         |    |             |
| LED Cap: Lens/Diffuser Colors     |                         |    |             |
| AB                                | Square Spot Illuminated |    |             |
|                                   | Black Cap/White Window  |    |             |
| JB                                | Clear/White             |    |             |
| JC                                | Clear/Red               |    |             |
| JD                                | Clear/Amber             |    |             |
| JF                                | Clear/Green             |    |             |
| LED Cap: Lens/Diffuser Colors     |                         |    |             |
| JB                                | Clear/White             |    |             |

DESCRIPTION FOR TYPICAL ORDERING EXAMPLE

**KB02KW01-12-FF**



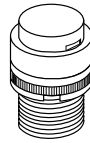
### SHAPES & MOUNTING TYPES

#### Bushing Mounting

**01** .551" (14mm)  
Square



**02** .551" (14mm)  
Round



**03** .551" x .728" (14mm x 18.5mm)  
Rectangular



#### Snap-in Mounting

**04** .551" (14mm)  
Square



**05** .551" (14mm)  
Round



**06** .551" x .728" (14mm x 18.5mm)  
Rectangular



The bezel is an integral part of the indicator body.

#### Bushing Mounting

Without  
Keyway



Panel Thickness:  
.020" ~ .315"  
(0.5 ~ 8mm)



With  
Keyway

#### Snap-in Mounting

Panel Thickness:  
.039" ~ .138"  
(1.0 ~ 3.5mm)



### TERMINALS

**W01**

Silver Solder Lug



### LAMP COLORS & SPECIFICATIONS

The electrical specifications shown are determined at a basic temperature of 25°C.  
If the source voltage exceeds the rated voltage, a ballast resistor is required.  
The ballast resistor calculation and more lamp detail are shown in the Supplement section.

#### Incandescent & Neon Lamps

| AT611<br>Incandescent | AT615<br>Neon |               | <b>05</b> | <b>12</b> | <b>01</b> | Recommended Resistors<br>for Neon:<br>33K ohms for 110V AC;<br>100K ohms for 220V AC |
|-----------------------|---------------|---------------|-----------|-----------|-----------|--|
|                       |               |               | Voltage   | V         | 5V AC     |  |
| Current               | I             | 115mA         | 60mA      | 1.5mA     |           |  |
| Endurance             | Hours         | 7,000 average |           | 10,000    |           |  |

#### Bright LED without Resistor

| AT635                             | Red          | Amber     | Green     | <b>No Code</b> No Resistor |           |           |
|-----------------------------------|--------------|-----------|-----------|----------------------------|-----------|-----------|
|                                   |              |           |           | Red                        | Amber     | Green     |
| Color Codes                       | <b>5C</b>    | <b>5D</b> | <b>5F</b> |                            |           |           |
| Forward Peak Current              | $I_{FM}$     |           |           | 30mA                       | 30mA      | 30mA      |
| Continuous Forward Current        | $I_F$        |           |           | 20mA                       | 20mA      | 20mA      |
| Forward Voltage                   | $V_F$        |           |           | 1.9V                       | 2.0V      | 2.1V      |
| Reverse Peak Voltage              | $V_{RM}$     |           |           | 5V                         | 5V        | 5V        |
| Current Reduction Rate Above 25°C | $\Delta I_F$ |           |           | 0.42mA/°C                  | 0.29mA/°C | 0.42mA/°C |
| Ambient Temperature Range         |              |           |           | -25° ~ +50°C               |           |           |

**AT635**

LEDs are colored  
in OFF state.




T-1 1/2 Bi-pin

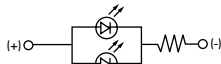
LAMP COLORS & SPECIFICATIONS

The electrical specifications shown are determined at a basic temperature of 25°C.  
 If the source voltage exceeds the rated voltage, a ballast resistor is required.  
 The ballast resistor calculation and more lamp detail are shown in the Supplement section.

Bright LED with Resistor

|   |                                   |                  |                    |                    |                |           |           |      |
|---|-----------------------------------|------------------|--------------------|--------------------|----------------|-----------|-----------|------|
| <b>AT634</b><br><br>LEDs are colored in OFF state.<br><br><br><br>T-1 1/4 Bi-pin | Color Codes:                      | Red<br><b>5C</b> | Amber<br><b>5D</b> | Green<br><b>5F</b> | Resistor Codes |           |           |      |
|   |                                   |                  |                    |                    | <b>05</b>      | <b>12</b> | <b>24</b> |      |
|   | Forward Peak Current              |                  |                    |                    | $I_{FM}$       | —         | —         | —    |
|   | Continuous Forward Current        |                  |                    |                    | $I_F$          | 25mA      | 20mA      | 10mA |
|   | Forward Voltage                   |                  |                    |                    | $V_F$          | 5V        | 12V       | 24V  |
|   | Reverse Peak Voltage              |                  |                    |                    | $V_{RM}$       | 4V        | 8V        | 16V  |
|   | Current Reduction Rate Above 25°C |                  |                    |                    | $\Delta I_F$   | —         | —         | —    |
| Ambient Temperature Range   |                                   |                  |                    |                    | -25° ~ +50°C   |           |           |      |

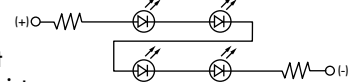
AT634  
5-volt  
2-element  
with 1 Resistor



AT634  
12-volt  
4-element  
with 2 Resistors



AT634  
24-volt  
4-element  
with 2 Resistors



Super Bright Single Element LED

|   |  |  |  |           |              |           |           |           |
|---|--|--|--|-----------|--------------|-----------|-----------|-----------|
| <b>AT625G Blue</b><br><br><b>AT631B White</b><br><br><b>AT632F Green</b><br><br><br><br>T-1 Bi-pin |  |  |  | <b>6B</b> | <b>6F</b>    | <b>6G</b> |           |           |
|   | Color  |  |  |           | White        | Green     | Blue      |           |
|   | Forward Peak Current   |  |  |           | $I_{FM}$     | 30mA      | 30mA      | 30mA      |
|   | Continuous Forward Current   |  |  |           | $I_F$        | 20mA      | 20mA      | 20mA      |
|   | Forward Voltage  |  |  |           | $V_F$        | 3.6V      | 3.5V      | 3.6V      |
|   | Reverse Peak Voltage   |  |  |           | $V_{RM}$     | 5V        | 5V        | 5V        |
|   | Current Reduction Rate Above 25°C  |  |  |           | $\Delta I_F$ | 0.50mA/°C | 0.50mA/°C | 0.50mA/°C |
| Ambient Temperature Range   |  |  |  |           | -25° ~ +50°C |           |           |           |

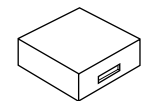
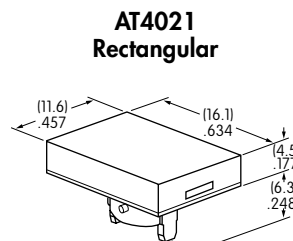
CAP TYPES & COLOR COMBINATIONS

Color Codes:    **B** White    **C** Red    **E** Yellow    **F** Green    **G** Blue    **J** Clear

Solid Cap for Incandescent Lamp

Lens/Filter Colors Available:

- BB**
- FB**
- CB**
- FF**
- CC**
- GB**
- EB**
- GG**



Translucent Colored Lens



Translucent Colored Filter



Lamp AT611

Material: Polycarbonate    Finish: Glossy

### CAP TYPES & COLOR COMBINATIONS

**Color Codes:** A Black B White C Red D Amber E Yellow F Green G Blue J Clear

#### Insert Cap for Incandescent or Neon Lamp

Lens/Filter Colors Available:

**JB**

**AT487**  
Square

**AT488**  
Round

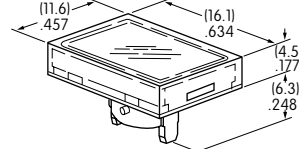
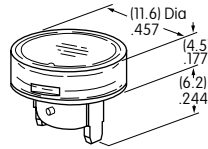
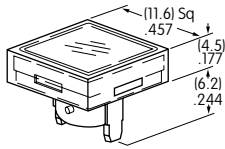
**AT4022**  
Rectangular



Transparent Clear Lens

**JC**

**JE**



Translucent Colored Filter

**JF**

**JG**



Lamp AT611 Lamp AT615

JF and JG not suitable with neon lamp.

Material: Polycarbonate Finish: Glossy

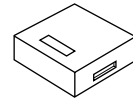
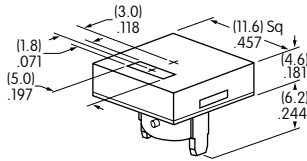
#### Spot Illuminated Cap for Bright LED without Resistor or with Resistor

Cap/Window Colors Available:

**AB**

**Opaque Black Cap with Translucent White Window for Spot Illumination**

**AT4051**  
Square



Bright LED AT635

Bright LED AT634

Material: Polycarbonate Finish: Matte

#### Cap for Bright LED without Resistor or LED with Resistor

Lens/Diffuser Colors Available: (AT4133, 4132, 4134 white diffusers; AT4158, 4160, 4159 colored diffusers)

**JB**

**AT4133**

**AT4132**

**AT4134**



Transparent Clear Lens

Square

Round

Rectangular

**JC**

**AT4158**

**AT4160**

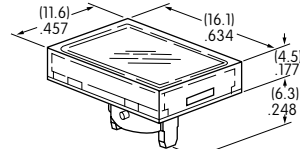
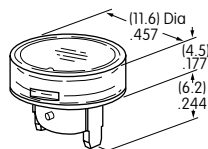
**AT4159**



Translucent Diffuser

**JD**

**JF**



Bright LED AT635

Bright LED AT634

Material: Polycarbonate Finish: Glossy

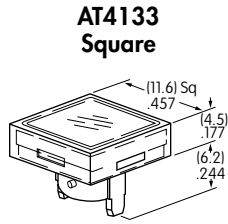
**CAP TYPES & COLOR COMBINATIONS**

Cap for Super Bright LED

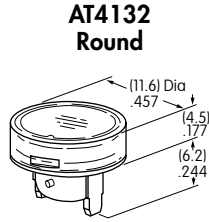
Lens/Diffuser  
Colors Available:



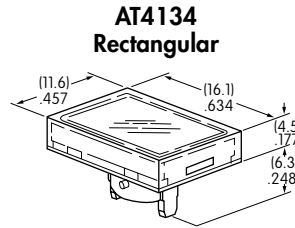
Clear Lens  
White Diffuser



**AT4133 Square**



**AT4132 Round**



**AT4134 Rectangular**



Translucent Clear Lens



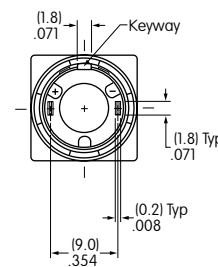
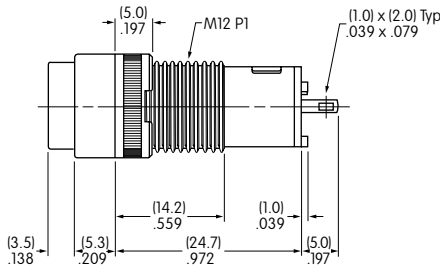
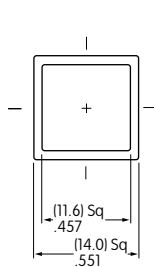
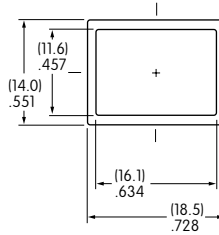
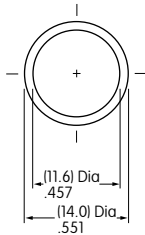
Translucent White Diffuser



Super Bright LEDs  
AT625, AT631, AT632

Material: Polycarbonate Finish: Glossy

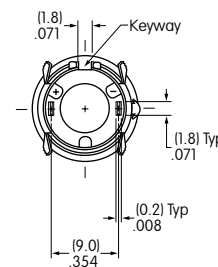
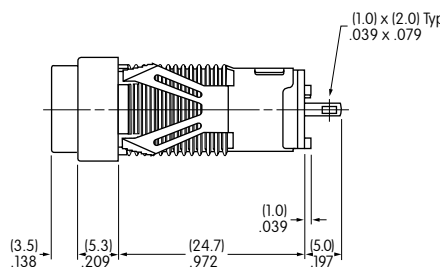
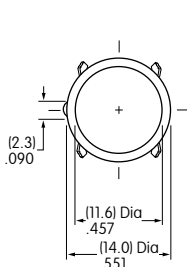
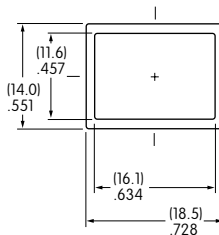
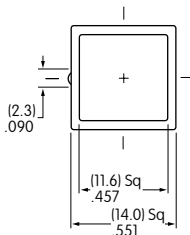
**TYPICAL INDICATOR DIMENSIONS**



**Bushing Mount**



**KB01KW01-05-GG**



**Snap-in Mount**



**KB05KW01-05-FF**



Компания «ЭлектроПласт» предлагает заключение долгосрочных отношений при поставках импортных электронных компонентов на взаимовыгодных условиях!

Наши преимущества:

- Оперативные поставки широкого спектра электронных компонентов отечественного и импортного производства напрямую от производителей и с крупнейших мировых складов;
- Поставка более 17-ти миллионов наименований электронных компонентов;
- Поставка сложных, дефицитных, либо снятых с производства позиций;
- Оперативные сроки поставки под заказ (от 5 рабочих дней);
- Экспресс доставка в любую точку России;
- Техническая поддержка проекта, помощь в подборе аналогов, поставка прототипов;
- Система менеджмента качества сертифицирована по Международному стандарту ISO 9001;
- Лицензия ФСБ на осуществление работ с использованием сведений, составляющих государственную тайну;
- Поставка специализированных компонентов (Xilinx, Altera, Analog Devices, Intersil, Interpoint, Microsemi, Aeroflex, Peregrine, Syfer, Eurofarad, Texas Instrument, Miteq, Cobham, E2V, MA-COM, Hittite, Mini-Circuits, General Dynamics и др.);

Помимо этого, одним из направлений компании «ЭлектроПласт» является направление «Источники питания». Мы предлагаем Вам помощь Конструкторского отдела:

- Подбор оптимального решения, техническое обоснование при выборе компонента;
- Подбор аналогов;
- Консультации по применению компонента;
- Поставка образцов и прототипов;
- Техническая поддержка проекта;
- Защита от снятия компонента с производства.



#### Как с нами связаться

**Телефон:** 8 (812) 309 58 32 (многоканальный)

**Факс:** 8 (812) 320-02-42

**Электронная почта:** [org@eplast1.ru](mailto:org@eplast1.ru)

**Адрес:** 198099, г. Санкт-Петербург, ул. Калинина, дом 2, корпус 4, литера А.