

# iDigi<sup>®</sup> Gateway Development Kit

Development Kit for ZigBee Gateways and iDigi Platform

All the hardware, software, and documentation necessary to experience ZigBee to Internet connectivity, iDigi web services and Digi development tools.



## Overview

The iDigi Gateway Development Kit is designed to make it easy to setup a ZigBee network, upload a custom iDigi<sup>®</sup> Dia application, and provide seamless connectivity to the iDigi<sup>®</sup> Device Cloud<sup>™</sup> for web services integration to standard business applications over the Internet. The kit contains:

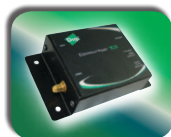
- ConnectPort<sup>®</sup> X4 ZigBee to Ethernet (or cellular/WiMAX) gateway
- Digi XBee Smart Plug<sup>™</sup> (non-US versions substitute XBee<sup>®</sup> Range Extender)
- Battery-powered XBee temperature/light sensor
- Digi ESP Integrated Development Environment (IDE) for iDigi Dia/Python development
- Related cables, batteries and power supply

iDigi Gateway Development Kit users will explore three key aspects of Digi technology: ZigBee networking and gateway fundamentals, local customization on the gateway using iDigi Dia/Python software, and iDigi web services. The kit also provides an example of how a business application would utilize real-time sensor data via web services and Google Apps.

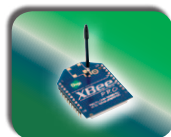
### Related Products



ZigBee RF Module Dev Kit



Gateways



XBee Modules



XBee Adapters

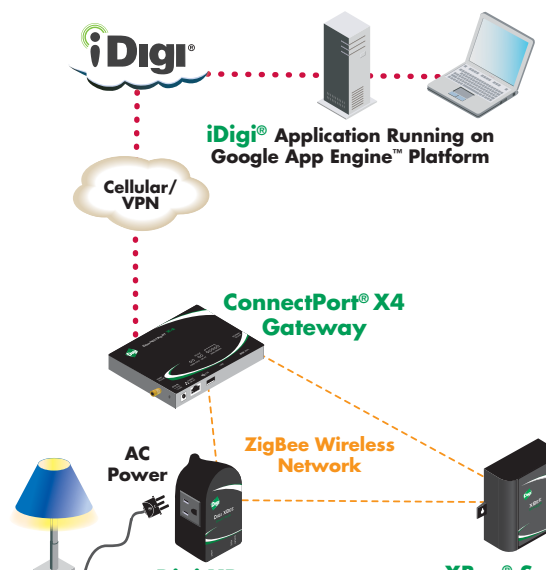


Range Extenders



iDigi Solutions

### Application Highlight



### Features/Benefits

- Jump-start application development with pre-packaged kit
- Learn how to discover and configure devices in a ZigBee network
- Read temperature and light values from the ZigBee network via the iDigi Device Cloud
- Provide IP (Ethernet or cellular/WiMAX) connectivity to the ZigBee network with a ConnectPort X4 gateway
- Google App Engine<sup>™</sup> platform and supporting code provide a simple example of a business application working with iDigi
- Digi ESP<sup>™</sup> for Python<sup>®</sup> simplifies Python development on Digi gateways



## Product Type

## ConnectPort® X4 Gateway

<b>General</b>	
Network Protocols	UDP/TCP, DHCP
Interfaces	Physical Interfaces: (1) RJ-45 Ethernet port, (1) DB-9 RS232 serial port, (1) USB port; RF Interfaces: (1) XBee-PRO® ZB 2.4 GHz, Optional generic GSM HSPA+, HSPA+/EV-DO 800/850/900/1700 (AWS)/1900/2100 MHz Gobi with Rx Diversity, or WiMAX
LEDs	Ethernet status, Power, XBee link/activity
Router/Security Features	NAT, Port forwarding, Access control lists (IP filtering)
Management	HTTP/HTTPS web interface, Password access control, IP service port control, Optional secure enterprise management via iDigi® Device Cloud™
Security	SSL tunnels, SSHv2, FIPS 197 (serial port)
VPN	IPsec with IKE/ISAKMP, multiple tunnel support, DES, 3DES and up to 256-bit AES encryption, VPN pass-through, GRE forwarding

## Product Type

## Digi XBee Smart Plug™ ZB (US Kits)

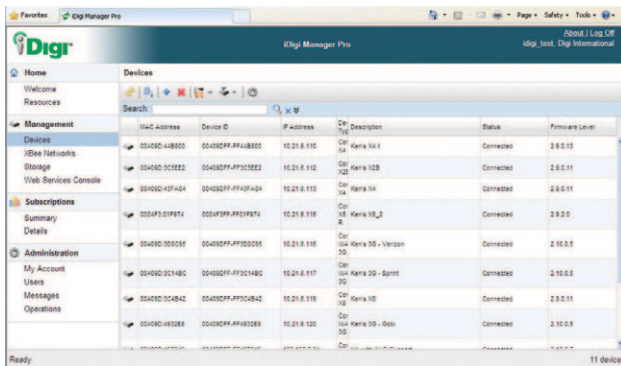
## XBee® Range Extender (Non-US kits)

<b>General</b>	
Current Sensor	Detects current draw from user AC socket, Range: 0 A to 8 A
Ambient Light Sensor	Range of spectral bandwidth: 360 to 970 nm (similar to human eye) Wavelength of peak sensitivity: 570 nm
LEDs	Outlet (Yellow): Solid when user AC socket is powered; Associate (Green): Solid when external power is supplied, blinks when unit is connected and associated to an RF network
Load Rating	Resistive: 120 VAC, 8A; Inductive (0.75 pf): 120 VAC, 960 VA Motor: 1/3 HP (7.2 FLA)

## Product Type

## XBee® Light/Temperature Sensor

<b>Performance</b>	
Indoor/Urban Range	133 ft (40 m)
Outdoor RF Line-of-Sight Range	400 ft (120 m)
LEDs	Power, XBee link/activity
Temperature Sensor	Range: -18° C to +55° C; (-0.4° F to +131° F); Accuracy: +/- 2° C
Ambient Light Sensor	Range of spectral bandwidth: 360 to 970 nm (similar to human eye) Wavelength of peak sensitivity: 570 nm
Power Requirements	3 x AA alkaline 1.5 V batteries (batteries included with kit)



Visit [www.digi.com](http://www.digi.com) for part numbers.

**DIGI SERVICE AND SUPPORT** - You can purchase with confidence knowing that Digi is here to support you with expert technical support and a strong five-year warranty. [www.digi.com/support](http://www.digi.com/support)

**Digi International  
Worldwide HQ**

877-912-3444  
952-912-3444

**Digi International  
France**

+33-1-55-61-98-98  
[www.digi.fr](http://www.digi.fr)

**Digi International  
Japan**

+81-3-5428-0261  
[www.digi-intl.co.jp](http://www.digi-intl.co.jp)

**Digi International  
India**

+91-80-4287-9887

**Digi International  
Singapore**

+65-6213-5380

**Digi International  
China**

+86-21-5150-6898  
[www.digi.cn](http://www.digi.cn)



91001658  
A4/612

BUY ONLINE • [www.digi.com](http://www.digi.com)

© 2010-2012 Digi International Inc.

All rights reserved. Digi, Digi International, the Digi logo, the iDigi logo, the Making Wireless M2M Easy logo, ConnectPort, Digi ESP, Digi XBee Smart Plug, iDigi, iDigi Device Cloud, XBee and XBee-PRO are trademarks or registered trademarks of Digi International Inc. in the United States and other countries worldwide. All other trademarks are the property of their respective owners. All information provided is subject to change without notice.

[info@digi.com](mailto:info@digi.com)





Компания «ЭлектроПласт» предлагает заключение долгосрочных отношений при поставках импортных электронных компонентов на взаимовыгодных условиях!

Наши преимущества:

- Оперативные поставки широкого спектра электронных компонентов отечественного и импортного производства напрямую от производителей и с крупнейших мировых складов;
- Поставка более 17-ти миллионов наименований электронных компонентов;
- Поставка сложных, дефицитных, либо снятых с производства позиций;
- Оперативные сроки поставки под заказ (от 5 рабочих дней);
- Экспресс доставка в любую точку России;
- Техническая поддержка проекта, помощь в подборе аналогов, поставка прототипов;
- Система менеджмента качества сертифицирована по Международному стандарту ISO 9001;
- Лицензия ФСБ на осуществление работ с использованием сведений, составляющих государственную тайну;
- Поставка специализированных компонентов (Xilinx, Altera, Analog Devices, Intersil, Interpoint, Microsemi, Aeroflex, Peregrine, Syfer, Eurofarad, Texas Instrument, Miteq, Cobham, E2V, MA-COM, Hittite, Mini-Circuits, General Dynamics и др.);

Помимо этого, одним из направлений компании «ЭлектроПласт» является направление «Источники питания». Мы предлагаем Вам помощь Конструкторского отдела:

- Подбор оптимального решения, техническое обоснование при выборе компонента;
- Подбор аналогов;
- Консультации по применению компонента;
- Поставка образцов и прототипов;
- Техническая поддержка проекта;
- Защита от снятия компонента с производства.



#### Как с нами связаться

**Телефон:** 8 (812) 309 58 32 (многоканальный)

**Факс:** 8 (812) 320-02-42

**Электронная почта:** [org@eplast1.ru](mailto:org@eplast1.ru)

**Адрес:** 198099, г. Санкт-Петербург, ул. Калинина, дом 2, корпус 4, литера А.