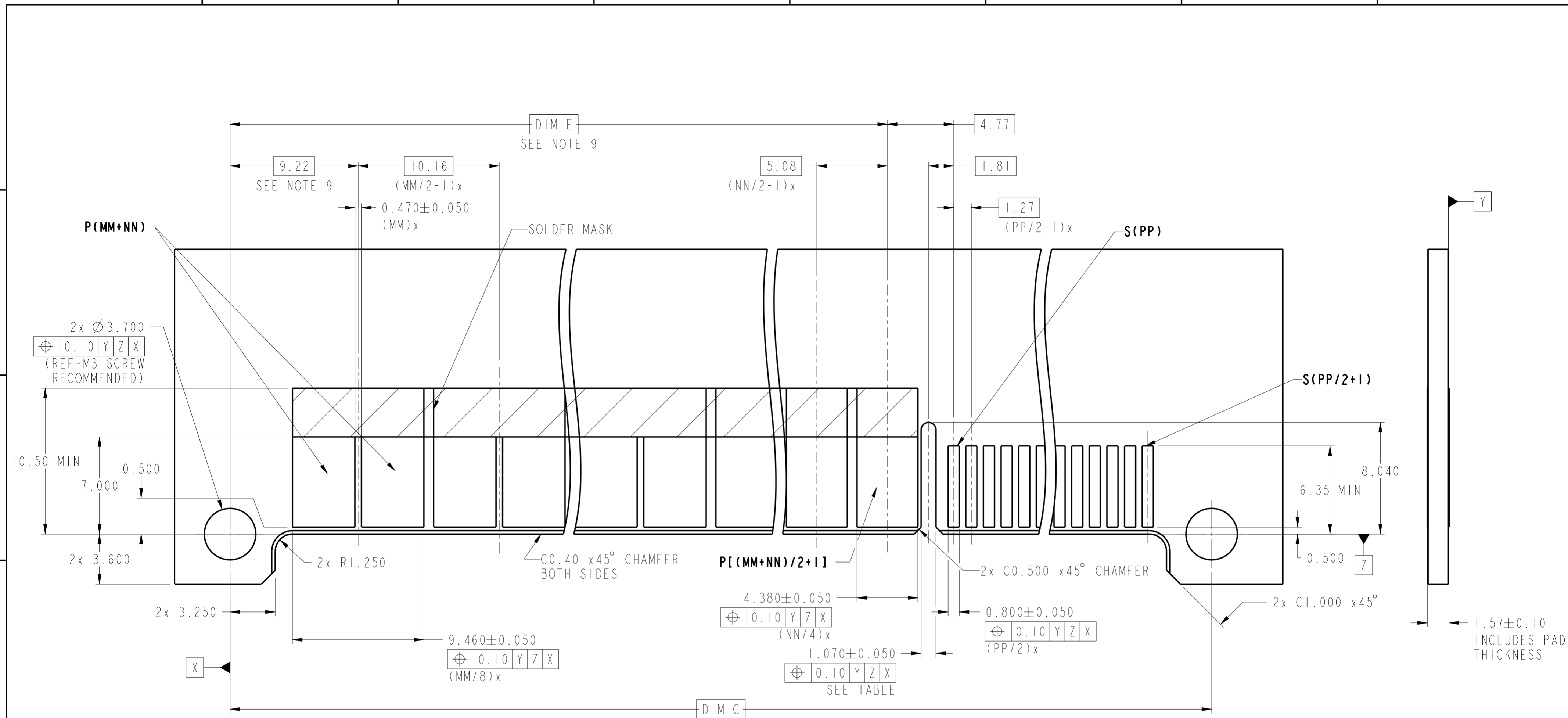


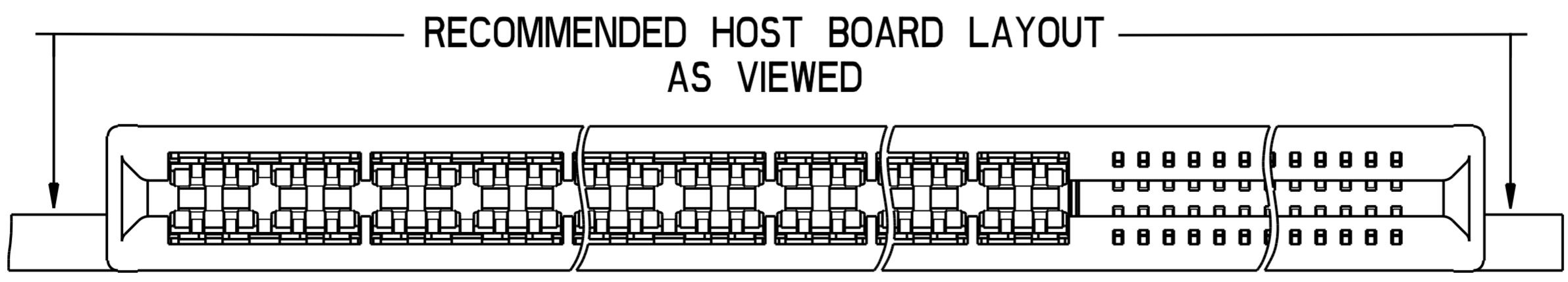
|                                       |                                       |                     |             |  |                |           |           |                        |              |     |
|---------------------------------------|---------------------------------------|---------------------|-------------|--|----------------|-----------|-----------|------------------------|--------------|-----|
| spec ref                              | -                                     | dr                  | Andy Lu     | 2015-12-24   | projection     | MM        | size      | A2                     | scale        | 4:1 |
| tolerance std                         | ISO 406<br>ISO 1101                   | eng                 | Andy Lu     | 2018-03-07   |                |           | ecn no    | rel level              | In Work      | rev |
| TOLERANCES UNLESS OTHERWISE SPECIFIED |                                       | chr                 | Fancy Zhang | 2018-03-07   |                |           |           |                        |              |     |
| surface                               | ISO 1302                              | appr                | PM Zheng    | 2018-03-07   | product family | CARD EDGE | rel level | In Work                | rev          | 5   |
| linear                                | 0.X ±0.5<br>0.XX ±0.25<br>0.XXX ±0.13 | <b>Amphenol FCI</b> |             | <b>eHPCE STRADDLE MOUNT</b><br>(UP+MP+S) - UNIVERSAL DRAWING |                | cat. no.  | 10137755  | Product - Customer Drw | sheet 1 of 5 |     |
| angular                               | 0° ±2°                                |                     |             |  |                |           |           |                        |              |     |

Amphenol FCI

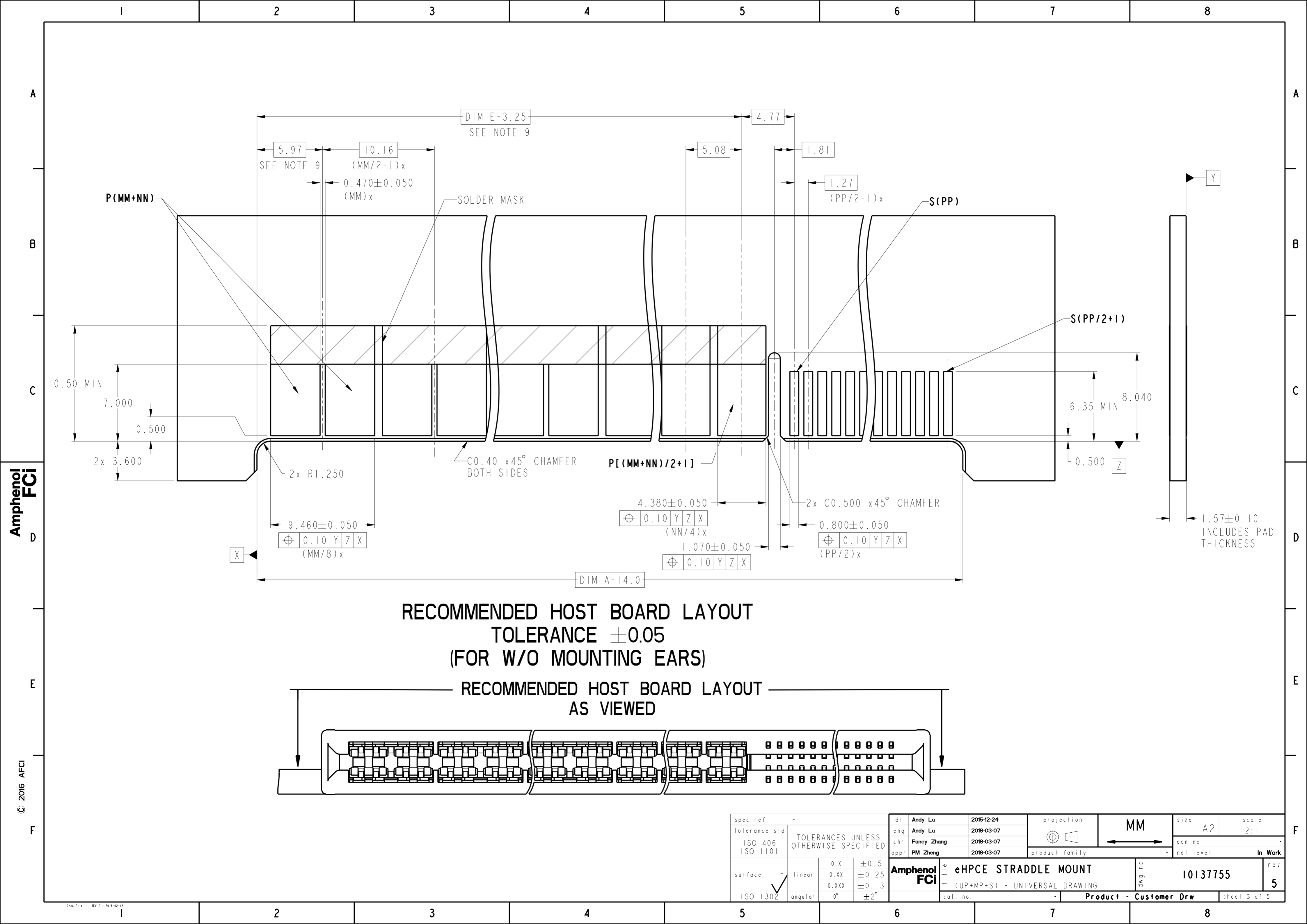
© 2016 AFCI



**RECOMMENDED HOST BOARD LAYOUT  
TOLERANCE ±0.05**

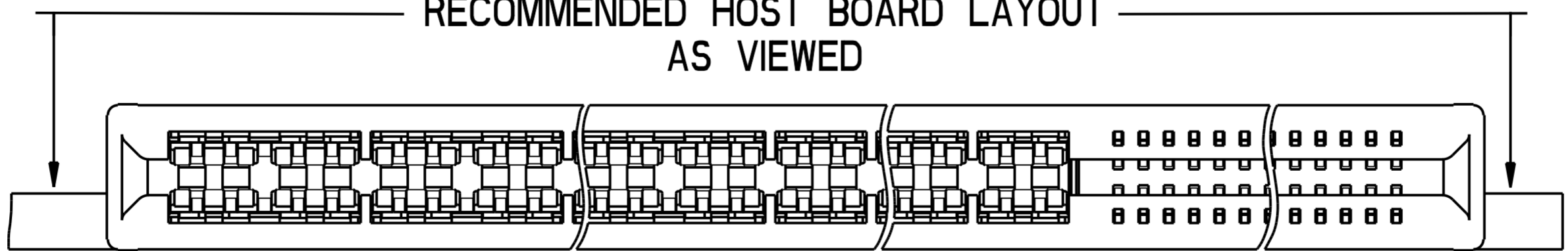


|                                       |                                       |                     |             |   |                |              |           |     |         |     |
|---------------------------------------|---------------------------------------|---------------------|-------------|---|----------------|--------------|-----------|-----|---------|-----|
| spec ref                              | -                                     | dr                  | Andy Lu     | 2015-12-24  | projection     | MM           | size      | A2  | scale   | 2:1 |
| tolerance std                         | ISO 406<br>ISO 1101                   | eng                 | Andy Lu     | 2018-03-07  |                |              | ecn no    | -   | In Work |     |
| TOLERANCES UNLESS OTHERWISE SPECIFIED |                                       | chr                 | Fancy Zhang | 2018-03-07  |                |              | rel level | -   |         |     |
| surface                               | ISO 1302                              | appr                | PM Zheng    | 2018-03-07  | product family | -            | rel level | -   | In Work |     |
| linear                                | 0.X ±0.5<br>0.XX ±0.25<br>0.XXX ±0.13 | <b>Amphenol FCI</b> |             | title eHPCE STRADDLE MOUNT<br>(UP+MP+S) - UNIVERSAL DRAWING |                | dwg no       | 10137755  | rev | 5       |     |
| angular                               | 0° ±2°                                | cat. no.            |             | Product - Customer Drw                                      |                | sheet 2 of 5 |           |     |         |     |



**RECOMMENDED HOST BOARD LAYOUT**  
**TOLERANCE ±0.05**  
**(FOR W/O MOUNTING EARS)**

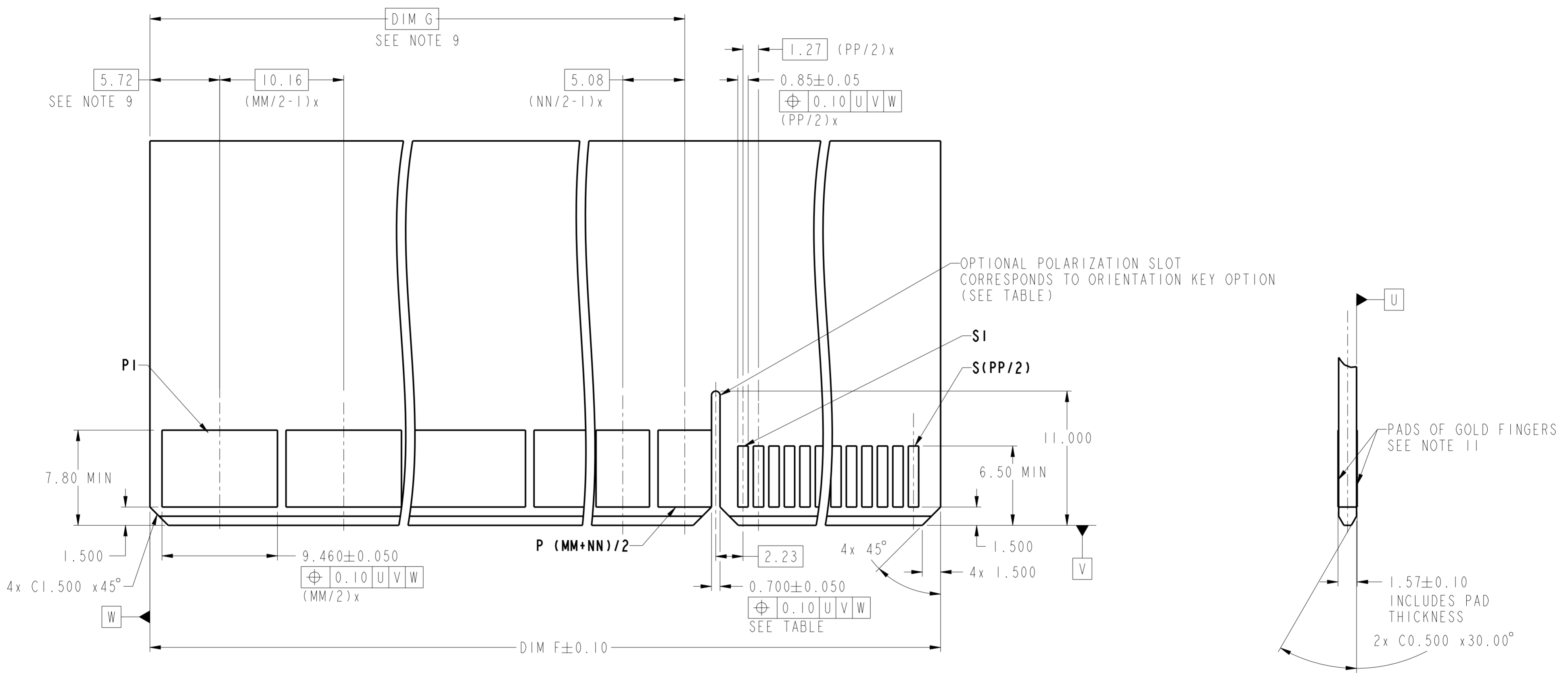
**RECOMMENDED HOST BOARD LAYOUT**  
**AS VIEWED**



|   |                     |      |             |            |                |    |           |         |                        |  |
|---|---------------------|------|-------------|------------|----------------|----|-----------|---------|------------------------|--|
| spec ref  | -                   | dr   | Andy Lu     | 2015-12-24 | projection     | MM | size      | A2      | scale                  | 2:1  |
| tolerance std   | ISO 406<br>ISO 1101 | eng  | Andy Lu     | 2018-03-07 |                |    | ecn no    | -       | <b>Amphenol FCI</b>    | <b>eHPCE STRADDLE MOUNT</b><br>(UP+MP+S) - UNIVERSAL DRAWING |
| surface   | ISO 1302            | chr  | Fancy Zhang | 2018-03-07 |                |    | rel level | In Work |                        |  |
|   |                     | appr | PM Zheng    | 2018-03-07 | product family | -  | cat. no.  | -       | Product - Customer Drw | sheet 3 of 5   |
| TOLERANCES UNLESS OTHERWISE SPECIFIED<br>linear: 0.X ±0.5, 0.XX ±0.25, 0.XXX ±0.13<br>angular: 0° ±2° |                     |      |             |            |                |    |           |         |                        |  |

Amphenol FCI

© 2016 APCI



RECOMMENDED MATING BOARD LAYOUT  
TOLERANCE ±0.05

Amphenol  
FCi

© 2016 AFci

|                                       |                                       |                 |             |            |                |   |           |              |           |         |   |
|---------------------------------------|---------------------------------------|-----------------|-------------|------------|----------------|---|-----------|--------------|-----------|---------|---|
| spec ref                              | -                                     | dr              | Andy Lu     | 2015-12-24 | projection     | MM  | size      | A2           | scale     | 1:1     |   |
| tolerance std                         | ISO 406<br>ISO 1101                   | eng             | Andy Lu     | 2018-03-07 |                |   | ecn no    | -            | rel level | In Work |   |
| TOLERANCES UNLESS OTHERWISE SPECIFIED |                                       | chr             | Fancy Zhang | 2018-03-07 |                |   |           |              |           |         |   |
| surface                               | ISO 1302                              | appr            | PM Zheng    | 2018-03-07 | product family | -   | rel level | -            | In Work   |         |   |
| linear                                | 0.X ±0.5<br>0.XX ±0.25<br>0.XXX ±0.13 | Amphenol<br>FCi |             | title      |                | eHPCE STRADDLE MOUNT<br>(UP+MP+S) - UNIVERSAL DRAWING |           | dwg no       | 10137755  | rev     | 5 |
| angular                               | 0° ±2°                                | cat. no.        |             | -          |                | Product - Customer Drw                                |           | sheet 4 of 5 |           |         |   |

10137755 - MM NN PP LF

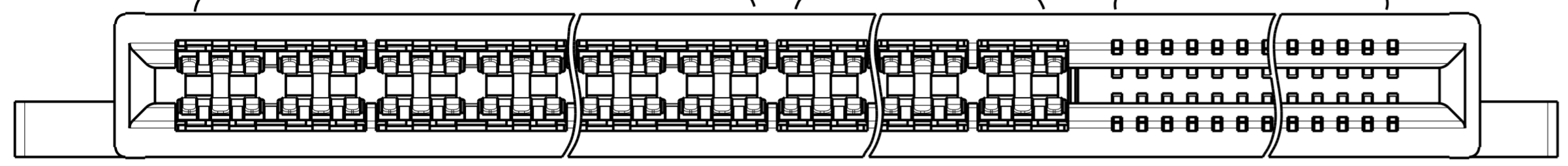
LEAD FREE

|                  |   |   |   |   |   |   |   |   |
|------------------|---|---|---|---|---|---|---|---|
|                  | A | B | C | D | E | F | G | H |
| MOUNTING EARS    | Y | Y | Y | N | N | N | Y | N |
| POLARIZATION KEY | Y | N | N | Y | N | N | Y | Y |
| REAR GUIDE       | Y | Y | N | Y | Y | N | N | N |

ULTRA PWR CONTACT QTY  
(NEXT TO LEFT END)

MIDDLE PWR CONTACT QTY  
(NEXT TO SIGNAL)

SIGNAL CONTACT QTY



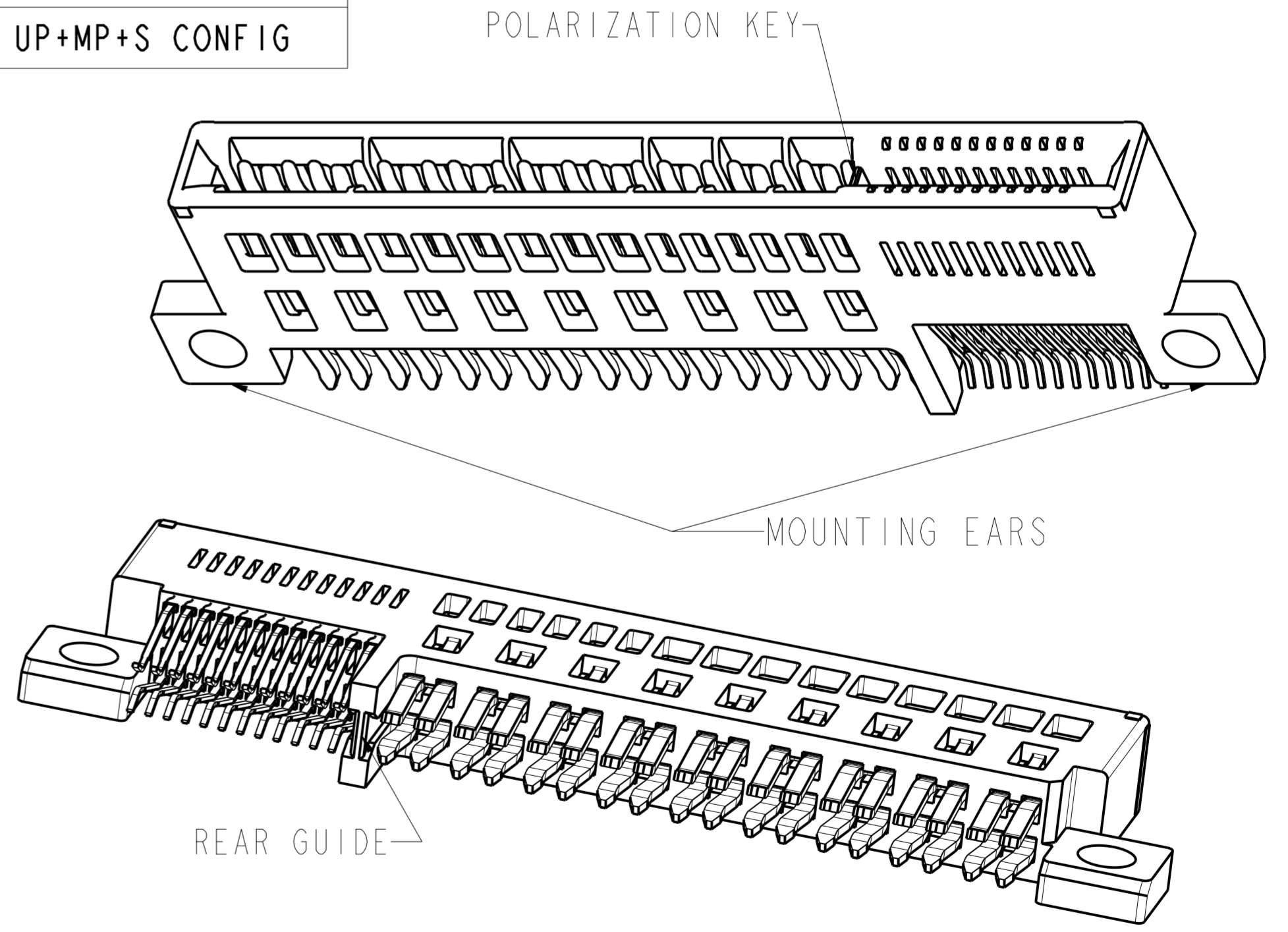
Example: The configuration above is 10137755-060624ALF  
STRADDLE MOUNT WITH ENHANCED WALLS 6UP6MP24S WITH MOUNTING EARS,  
POLARIZATION KEY AND ALIGNMENT KEY.

6UP means 6 pcs ultra power contacts with 6 beams; 24S means 24 pcs signal contacts;  
6MP means 6 pcs middle power contacts with 3 beams.

TABLE: PART NUMBER CODE FOR eHPCE STRADDLE MOUNT WITH ENHANCED WALL UP+MP+S CONFIG

NOTES:

- CONNECTOR MATERIALS:  
HOUSING: HIGH TEMPERATURE THERMAL PLASTIC, BLACK, LOW HALOGEN, UL 94V-0  
CONTACTS: HIGH PERFORMANCE COPPER ALLOY.
- CONTACT FINISH REF. SECTION 5.2 IN PRODUCT SPECIFICATION.
- PRODUCT SPECIFICATION: GS-12-1362.
- APPLICATION SPECIFICATION: GS-20-0469.
- PRODUCT MARKING (PART NUMBER & DATE CODE) ON HOUSING IN AREA SHOWN.
- PACKAGING MEETS SPECIFICATION GS-14-2532(POCKET TRAY).
- HOUSING COMPONENT WILL WITHSTAND EXPOSURE TO 260°C PEAK TEMPERATURE FOR 10 SECONDS IN A CONVECTION, INFRA-RED, OR VAPOR PHASE REFLOW OVEN.
- MAXIMUM OVERALL LENGTH IS 100mm.
- DIM IS NOT APPLICABLE IF THERE ISN'T 3 BEAMS CONTACT.
- THIS PRODUCT MEETS EUROPEAN UNION DERECTIVES AND OTHER COUNTRY REGULATIONS AS DESCRIBED IN GS-47-0004.
- PLATING OF PADS SHALL BE 30u" GOLD MINIMUM OVER 50u" NICKEL MINIMUM. SURFACE MUST BE FREE OF FOREIGN MATTER.



| DIM     | TABLE 2. LENGTH FORMULAS   |
|---------|--|
| DIM A ⑧ | $(MM/2)*10.16 + (NN/2) \times 5.08 + (PP/2) \times 1.27 + 17.20$   |
| DIM B   | DIM A - 13.08  |
| DIM C   | DIM A - 7.50   |
| DIM D   | DIM A - 8.98   |
| DIM E ⑨ | $(MM/2 - 1) \times 10.16 + (NN/2 - 1) \times 5.08 + 16.84$ (WITH UP CONTACT)<br>$(NN/2 - 1) \times 5.08 + 6.68$ (WITHOUT UP CONTACT) |
| DIM F   | DIM A - 13.38  |
| DIM G ⑨ | $(MM/2 - 1) \times 10.16 + (NN/2 - 1) \times 5.08 + 13.34$ (WITH UP CONTACT)<br>$(NN/2 - 1) \times 5.08 + 3.18$ (WITHOUT UP CONTACT) |

|               |                     |      |             |            |                |                      |                        |          |              |     |   |
|---------------|---------------------|------|-------------|------------|----------------|----------------------|------------------------|----------|--------------|-----|---|
| spec ref      | -                   | dr   | Andy Lu     | 2015-12-24 | projection     | MM                   | size                   | A2       | scale        | 4:1 |   |
| tolerance std | ISO 406<br>ISO 1101 | eng  | Andy Lu     | 2018-03-07 |                | CARD EDGE            | ecn no                 | -        |              |     |   |
| surface       | linear<br>ISO 1302  | chr  | Fancy Zhang | 2018-03-07 |                |                      | rel level              | In Work  |              |     |   |
|               | angular             | appr | PM Zheng    | 2018-03-07 | product family | eHPCE STRADDLE MOUNT |                        | cat. no. | 10137755     | rev | 5 |
|               |                     |      |             |            |                |                      | Product - Customer Drw |          | sheet 5 of 5 |     |   |

Amphenol FCI

© 2016 AFCI



Компания «ЭлектроПласт» предлагает заключение долгосрочных отношений при поставках импортных электронных компонентов на взаимовыгодных условиях!

Наши преимущества:

- Оперативные поставки широкого спектра электронных компонентов отечественного и импортного производства напрямую от производителей и с крупнейших мировых складов;
- Поставка более 17-ти миллионов наименований электронных компонентов;
- Поставка сложных, дефицитных, либо снятых с производства позиций;
- Оперативные сроки поставки под заказ (от 5 рабочих дней);
- Экспресс доставка в любую точку России;
- Техническая поддержка проекта, помощь в подборе аналогов, поставка прототипов;
- Система менеджмента качества сертифицирована по Международному стандарту ISO 9001;
- Лицензия ФСБ на осуществление работ с использованием сведений, составляющих государственную тайну;
- Поставка специализированных компонентов (Xilinx, Altera, Analog Devices, Intersil, Interpoint, Microsemi, Aeroflex, Peregrine, Syfer, Eurofarad, Texas Instrument, Miteq, Cobham, E2V, MA-COM, Hittite, Mini-Circuits, General Dynamics и др.);

Помимо этого, одним из направлений компании «ЭлектроПласт» является направление «Источники питания». Мы предлагаем Вам помощь Конструкторского отдела:

- Подбор оптимального решения, техническое обоснование при выборе компонента;
- Подбор аналогов;
- Консультации по применению компонента;
- Поставка образцов и прототипов;
- Техническая поддержка проекта;
- Защита от снятия компонента с производства.



#### Как с нами связаться

**Телефон:** 8 (812) 309 58 32 (многоканальный)

**Факс:** 8 (812) 320-02-42

**Электронная почта:** [org@eplast1.ru](mailto:org@eplast1.ru)

**Адрес:** 198099, г. Санкт-Петербург, ул. Калинина, дом 2, корпус 4, литера А.