

PLEASE CHECK WWW.MOLEX.COM FOR LATEST PART INFORMATION

Part Number: [0919150001](#)
Status: **Active**
Description: 2.54mm (.100") Pitch SIM Card Connector, Lead Free

Documents:

[3D Model](#) [Product Specification PS-91915-001 \(PDF\)](#)
[Drawing \(PDF\)](#) [RoHS Certificate of Compliance \(PDF\)](#)

General

Product Family	Memory Card Sockets
Series	91915
Button Type	N/A
Component Type	I/O Header (Card)
Product Name	SIM
Type	N/A

Physical

Card Detection Switch	Yes
Circuits (Loaded)	6
Color - Resin	Black
Durability (mating cycles max)	10,000
Ejector Button Side	No Ejector Button Present
Entry Angle	Vertical
Keying to Mating Part	Yes
Material - Metal	Phosphor Bronze
Material - Plating Mating	Gold
Material - Plating Termination	Tin
Material - Resin	High Temperature Thermoplastic
PCB Mounting Side	Reverse
PCB Retention	None
Packaging Type	Embossed Tape on Reel
Pitch - Mating Interface (in)	0.100 In
Pitch - Mating Interface (mm)	2.54 mm
Plating min: Mating (µin)	4
Plating min: Mating (µm)	0.1
Plating min: Termination (µin)	120
Plating min: Termination (µm)	3
Ports	8
Temperature Range - Operating	-40°C to +85°C
Termination Interface: Style	Surface Mount

Electrical

Current - Maximum per Contact	0.5A
Voltage - Maximum	15V

Solder Process Data

Lead-free Process Capability	Reflow Capable (SMT only)
Max. Cycles at Max. Process Temperature	2
Process Temperature max. C	240

Material Info

Reference - Drawing Numbers

Product Specification	PS-91915-001
Sales Drawing	SD-91915-001, SD-91915-003

EU RoHS

**ELV and RoHS
Compliant**

REACH SVHC

Contains SVHC: No

Halogen-Free

Status

Not Reviewed

China RoHS



**Need more information on product
environmental compliance?**

Email productcompliance@molex.com
For a multiple part number RoHS Certificate of
Compliance, [click here](#)

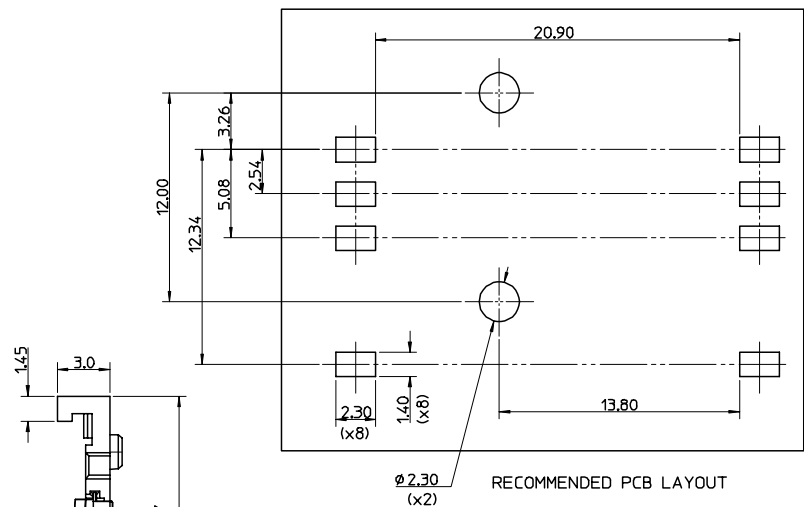
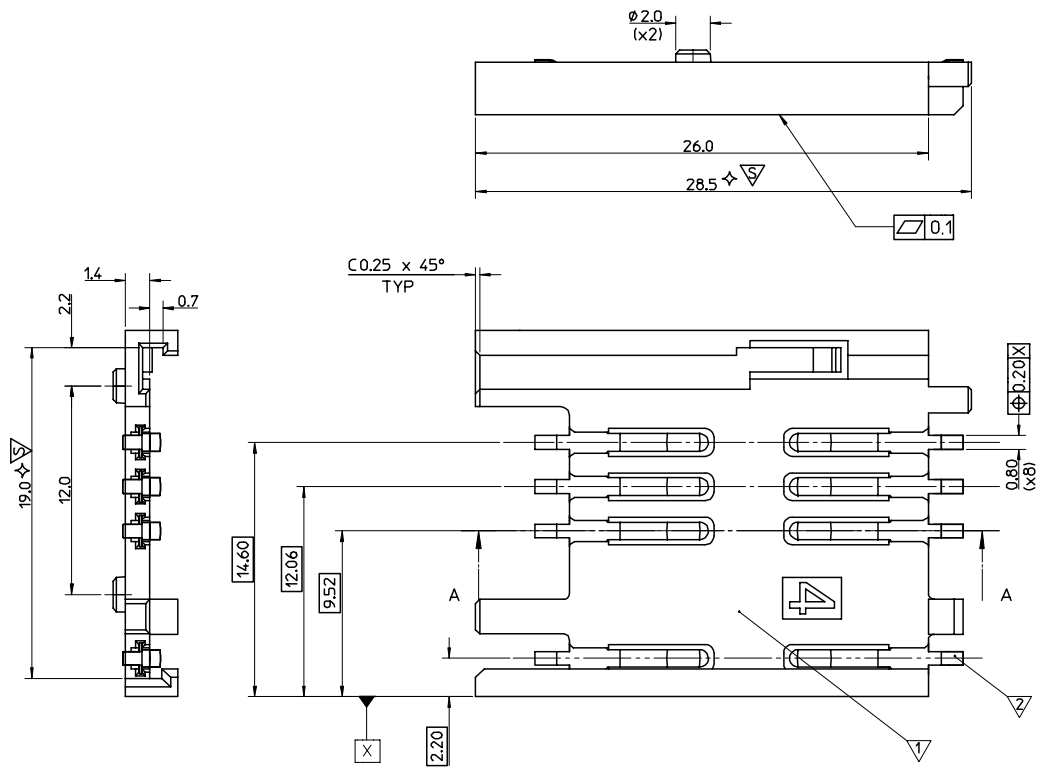
Please visit the [Contact Us](#) section for any
non-product compliance questions.

Search Parts in this Series

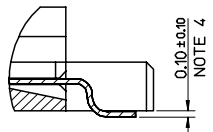
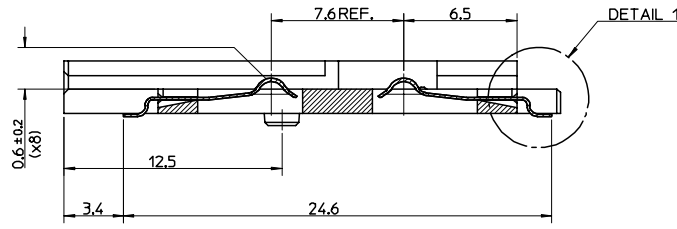
[91915Series](#)

This document was generated on 04/13/2010

PLEASE CHECK WWW.MOLEX.COM FOR LATEST PART INFORMATION

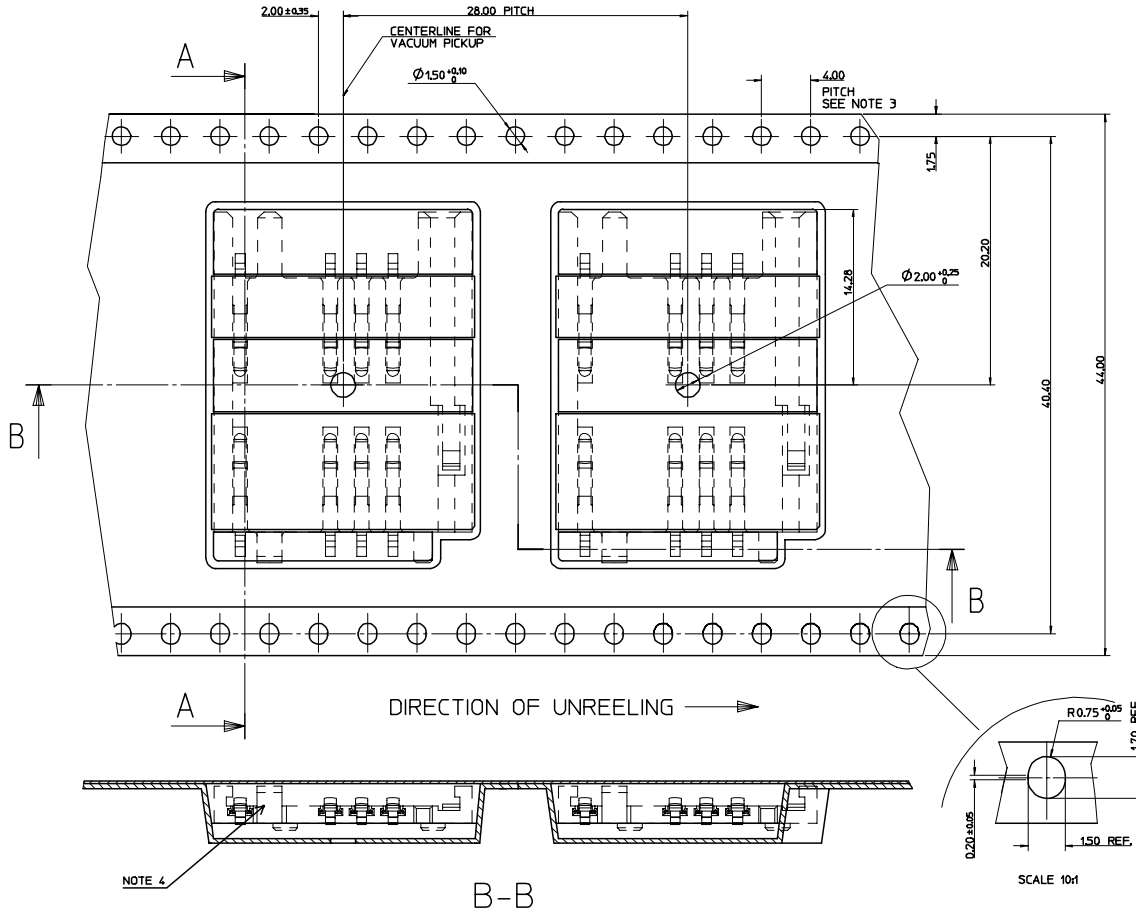
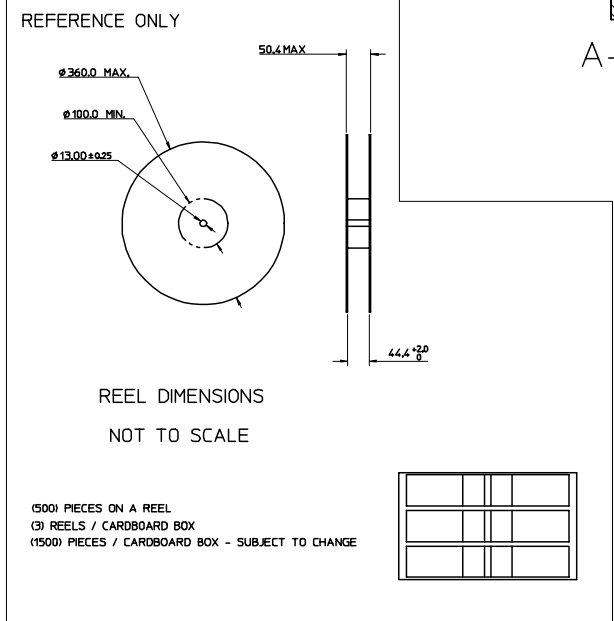
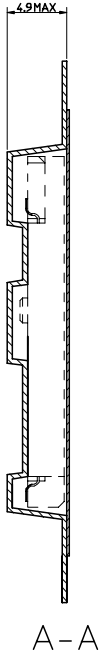
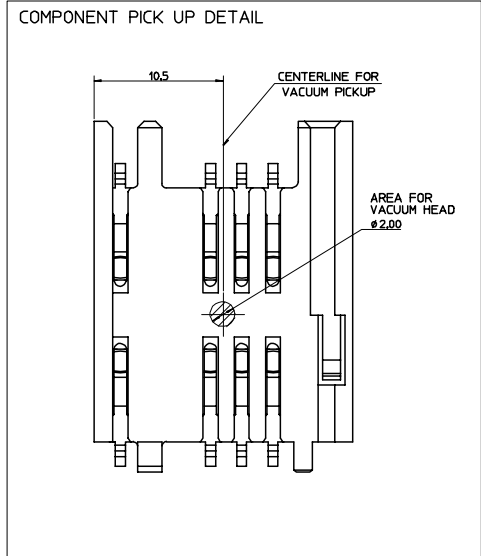


- NOTES:
1. PACKAGING: PARTS TO BE PACKAGED IN TAPE & REEL. SEE DRAWING SD-91915-003
 2. SEE PRODUCT SPECIFICATION PS-91915-001
 3. ⚡ THIS IS A CUSTOMER SPECIFIC SYMBOL
 4. TAILS ON EACH SIDE OF CONNECTOR TO LIE WITHIN 0.12mm OF EACH OTHER.



ITEM	COMPONENT	QTY	MATERIAL
▽	HOUSING	1	LCP E130i, UL94 V-0, COLOUR BLACK RoHS & LEAD FREE COMPLIANT
▽	TERMINAL	8	0.15 PHOSPHOR BRONZE Au FLASH OVER Pd/Ni Sn ON SMT TAILS

ORIGINAL RELEASE EIC NO: E2006-1110 DRAWN: CARTON 2007/02/14 CHKD: 2007/02/15 APPR: EFOLAN 2007/02/23 REV A	QUALITY SYMBOLS	GENERAL TOLERANCES (UNLESS SPECIFIED)	DIMENSION STYLE	SCALE	DESIGN UNITS	THIRD ANGLE PROJECTION	
	▽=0	4 PLACES ± ---	MM ONLY	1:1	METRIC		
	▽=0	3 PLACES ± ---					
	▽=3	2 PLACES ± 0.05					
		1 PLACE ± 0.10					
		ANGULAR ± 2 °					
		DRAFT WHERE APPLICABLE MUST REMAIN WITHIN DIMENSIONS					
			DRAWN BY	DATE	TITLE		
			DMAHER	2006/11/28	2.54 PITCH SIM CONNECTOR		
			CHECKED BY	DATE			
			F DUGGAN	2006/11/28			
			APPROVED BY	DATE			
			EFOLAN	2006/11/28			
			MATERIAL NO.	DOCUMENT NO.			
			91915 0001	SD-91915-001			
			SIZE				
			A2				
			THIS DRAWING CONTAINS INFORMATION THAT IS PROPRIETARY TO MOLEX INCORPORATED AND SHOULD NOT BE USED WITHOUT WRITTEN PERMISSION				
						SHEET NO. 1 OF 1	



- NOTES:
- MATERIAL:
CARRIER TAPE: VOLUME CONDUCTIVE POLYSTYRENE, 0.40 REF THICK, BLACK
COVER TAPE: COLD SEAL POLYESTER, 0.06 REF THICK, TRANSPARENT
 - PEEL FORCE OF THE COVER TAPE IS 0.1N TO 1.0N
AT MAXIMUM PEEL SPEED OF 300mm/min. ±10%
 - PITCH TOLERANCE OVER ANY 10 PITCHES ±0.2
 - TAPE & REEL PACKAGING FOR PART NUMBERS 919150001 & 919150002.

TO CUSTOMER ASSEMBLY MACHINE →

ORIGINAL RELEASE EC No: E2006-110 DRAWN/CARTON 2007/02/14 CHKD: APPR:	QUALITY SYMBOLS -0 -0.2	GENERAL TOLERANCES (UNLESS SPECIFIED)		SCALE 4:1	DESIGN UNITS METRIC	THIRD ANGLE PROJECTION	REVISE ON CAD ONLY		
		mm	INCH	DIMENSION STYLE MM ONLY					
		4 PLACES ± --- ± ---	3 PLACES ± --- ± ---	2 PLACES ± 0.10 ± ---	1 PLACE ± 0.2 ± ---	DRAWN BY DMAHER	DATE 2006/11/28	BLISTER PACKAGING SIM CONNECTOR	
		ANGULAR ± 2 °				CHECKED BY FDUGGAN	DATE 2006/11/28		
DRAFT WHERE APPLICABLE MUST REMAIN WITHIN DIMENSIONS		APPROVED BY EFOLAN	DATE 2006/11/28	NOTE 4		DOCUMENT NO. SD-91915-003	SHEET NO. 1 OF 1		

THIS DRAWING CONTAINS INFORMATION THAT IS PROPRIETARY TO MOLEX INCORPORATED AND SHOULD NOT BE USED WITHOUT WRITTEN PERMISSION



Компания «ЭлектроПласт» предлагает заключение долгосрочных отношений при поставках импортных электронных компонентов на взаимовыгодных условиях!

Наши преимущества:

- Оперативные поставки широкого спектра электронных компонентов отечественного и импортного производства напрямую от производителей и с крупнейших мировых складов;
- Поставка более 17-ти миллионов наименований электронных компонентов;
- Поставка сложных, дефицитных, либо снятых с производства позиций;
- Оперативные сроки поставки под заказ (от 5 рабочих дней);
- Экспресс доставка в любую точку России;
- Техническая поддержка проекта, помощь в подборе аналогов, поставка прототипов;
- Система менеджмента качества сертифицирована по Международному стандарту ISO 9001;
- Лицензия ФСБ на осуществление работ с использованием сведений, составляющих государственную тайну;
- Поставка специализированных компонентов (Xilinx, Altera, Analog Devices, Intersil, Interpoint, Microsemi, Aeroflex, Peregrine, Syfer, Eurofarad, Texas Instrument, Miteq, Cobham, E2V, MA-COM, Hittite, Mini-Circuits, General Dynamics и др.);

Помимо этого, одним из направлений компании «ЭлектроПласт» является направление «Источники питания». Мы предлагаем Вам помощь Конструкторского отдела:

- Подбор оптимального решения, техническое обоснование при выборе компонента;
- Подбор аналогов;
- Консультации по применению компонента;
- Поставка образцов и прототипов;
- Техническая поддержка проекта;
- Защита от снятия компонента с производства.



Как с нами связаться

Телефон: 8 (812) 309 58 32 (многоканальный)

Факс: 8 (812) 320-02-42

Электронная почта: org@eplast1.ru

Адрес: 198099, г. Санкт-Петербург, ул. Калинина, дом 2, корпус 4, литера А.