



## 3.3V 10A Sixteenth Brick Converter



### Features

- High Efficiency: 90.5% (3.3V/10A)
- Excellent thermal performance
- Over-voltage, over-current, short-circuit, and over temperature protection
- Monotonic start-up
- No minimum load required
- Fixed frequency operation
- Basic Insulation
- UL 60950-1 2<sup>nd</sup> edition recognized<sup>†</sup>



### Options

- Baseplate
- Auto-restart after fault shutdown
- Negative/Positive enable logic
- Various lead lengths

### Part Numbering System

Series Name	Input Voltage	Output Voltage	ON/OFF Logic	Output Current	Pin Feature	Electrical Options	Mechanical Options
SRS	4	033	N	010	N	2	6
							RoHS6 Compliant
SRS	4: 36-75V	Unit: 0.1V 033: 3.3V	P: positive N: negative	Unit: A 010:10A	Regular K: 0.110" N: 0.145" R: 0.180" S: SMT*	0: latch-up 2: auto-restart	5: open frame 6: baseplate

\*: SMT pins are metal block pins at the same locations as the through-hole pins. The recommended diameter for pad/stencil opening and solder mask opening for these pins is 0.12".

### Absolute Maximum Rating

Excessive stresses over these absolute maximum ratings can cause permanent damage to the converter. Operation should be limited to the conditions outlined under the Electrical Specification Section.

Parameter	Symbol	Min	Max	Unit
Input Voltage (continuous)	V <sub>i</sub>	-0.5	75	Vdc
Input Voltage (< 100ms, operating)	V <sub>i</sub>	-	100	Vdc
Input Voltage (continuous, non-operating)	V <sub>i</sub>	-	100	Vdc
I/O Isolation Voltage		-	2,250	Vdc
Operating Ambient Temperature (See Thermal Consideration section)	T <sub>o</sub>	-40	85*	°C
Storage Temperature	T <sub>stg</sub>	-55	125	°C

\* Derating curves provided in this datasheet end at 85°C ambient temperature. Operation above 85°C ambient temperature is allowed provided the temperatures of the key components or the baseplate do not exceed the limit stated in the Thermal Considerations section.

<sup>†</sup> UL is a registered trademark of Underwriters Laboratory Inc.



## Electrical Specifications

These specifications are valid over the converter's full range of input voltage, resistive load, and operating temperature unless noted otherwise.

### Input Specifications

Parameter	Symbol	Min	Typical	Max	Unit
Input Voltage	$V_i$	36	48	75	Vdc
Input Current	$I_{in,max}$	-	-	1.3	A
Quiescent Input Current (Typical $V_{in}$ )	$I_{in,qsnt}$	-	40	60	mA
Standby Input Current	$I_{in,stdby}$	-	1	3	mA
Input Reflected-ripple Current, Peak-to-peak (5 Hz to 20 MHz, 12 $\mu$ H source impedance)	-	-	10		mA
Input Ripple Rejection					dB
Input Turn-on Voltage Threshold	-	34	35	36	V
Input Turn-off Voltage Threshold	-	30	32	34	V
Input Voltage ON/OFF Control Hysteresis	-		3		V

### Output Specifications

Parameter	Symbol	Min	Typical	Max	Unit
Output Voltage Set Point	$V_o$		3.3		V
Output Voltage Set Point Accuracy ( $V_i$ = Typical $V_{in}$ ; $I_o$ = $I_{o,max}$ ; $T_a$ = 25°C)	-	-1.5		+1.5	% $V_o$
Output Voltage Set Point Accuracy (over all conditions)	-	-3		+3	% $V_o$
Output Regulation:					
Line Regulation (full range input voltage, 1/2 full load)	-	-	0.05	0.2	% $V_o$
Load Regulation (full range load, Typical $V_{in}$ )	-	-	0.05	0.2	% $V_o$
Temperature ( $T_a$ = -40°C to 85 °C)	-	-	0.1		% $V_o$
Output Current	$I_o$	0	-	10	A
Output Power	$P_o$	0		33	W
Efficiency (Typical $V_{in}$ ; $I_o,max$ , $T_a$ = 25°C)	$\eta$	-	90.5	-	%
Output ripple frequency	-	280	300	320	kHz
Output Ripple and Noise Voltage RMS	-	-		25	mVrms
Peak-to-peak (5 Hz to 20 MHz bandwidth, Typical $V_{in}$ )				60	mVp-p
External Load Capacitance	-	-	-	15,000	$\mu$ F
Startup Delay, duration from enabling signal to $V_o$ reaches 10% of its set point. (Typical $V_{in}$ ; $I_o,max$ , $T_a$ = 25°C )			2		ms
Startup Time, duration for $V_o$ to rise from 10% of its set point to within its regulation band. (Typical $V_{in}$ , $I_o,max$ , $T_a$ = 25°C )			4		ms
Output Over Current Protection Set Point / $I_{o,max}$		103	-	140	%
Output Over Voltage Protection Set Point* / $V_{o\_typical}$		115	125	135	%
Output Trim Range in % of $V_{o\_typical}$		80	-	110	%
Output Remote Sense Range in % of $V_{o\_typical}$				10	%
Dynamic Response (Typical $V_{in}$ ; $T_a$ = 25°C; Load transient 0.1A/ $\mu$ s) Load steps from 50% to 75% of full load: Peak deviation Settling time (within 10% band of $V_o$ deviation)			4 100		% $V_o$ $\mu$ s
Load step from 50% to 25% of full load Peak deviation Settling time (within 10% band of $V_o$ deviation)			4 100		% $V_o$ $\mu$ s



## General Specifications

Parameter	Symbol	Min	Typ	Max	Unit
Remote Enable Logic Low:					
ION/OFF = 1.0mA	VON/OFF	0	-	1.2	V
VON/OFF = 0.0V	ION/OFF	-	-	1.0	mA
Logic High:					
ION/OFF = 0.0μA	VON/OFF	3.5	-	15	V
Leakage Current	ION/OFF	-	-	50	μA
Isolation Capacitance	-	-	1200	-	pF
Isolation Resistance	-	10	-	-	MΩ
Calculated MTBF (Telecordia SR-332, 2011, Issue 3), full load, 40°C, 60% upper confidence level, typical Vin			11.6		10 <sup>6</sup> -hour

## Characteristic Curves

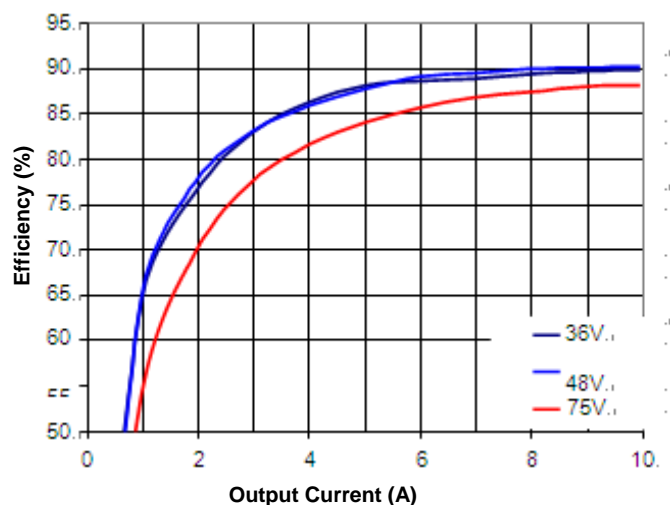


Figure 1. Efficiency vs. Load Current (25°C)

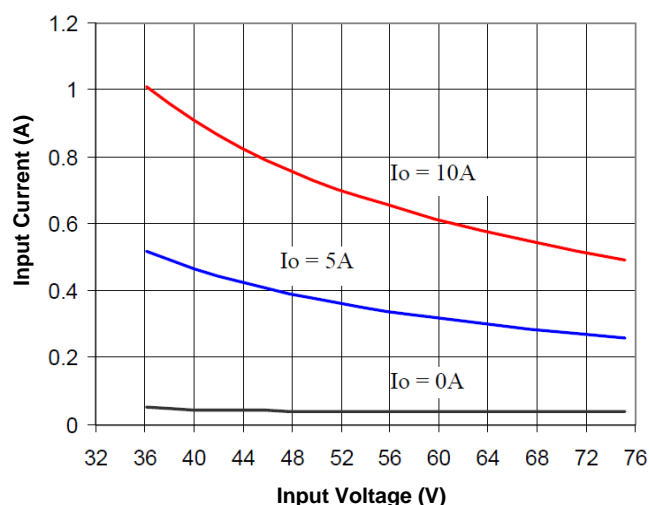


Figure 2. Input Characteristics

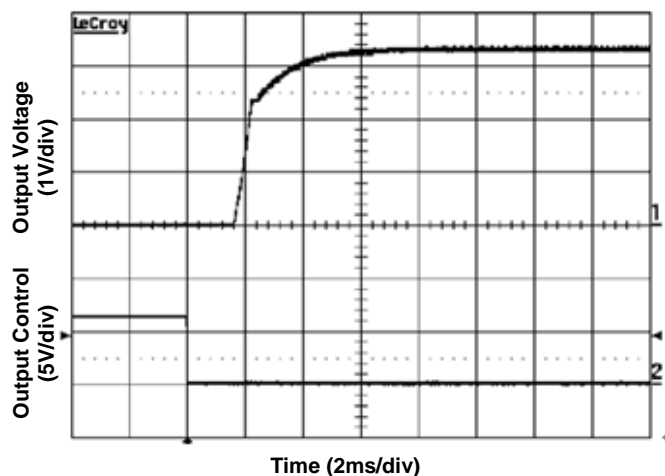


Figure 3. Start-Up from Enable Control  
(Typical input voltage and Full load)

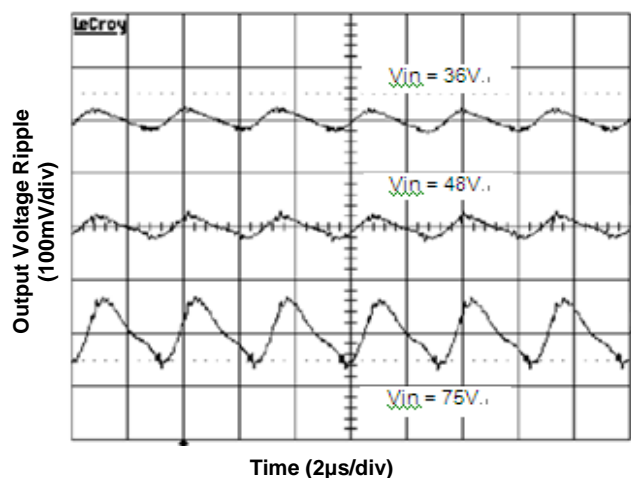
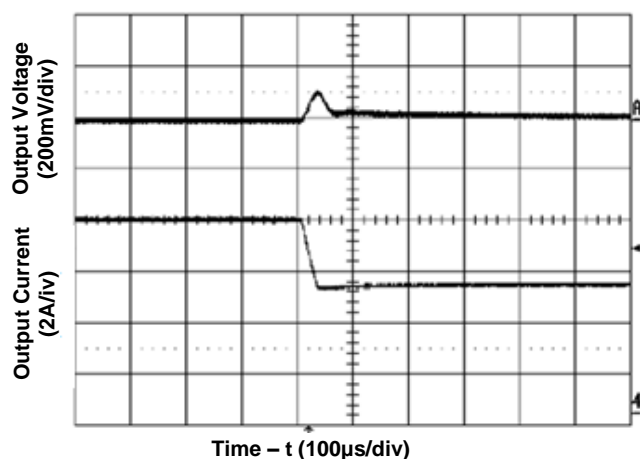
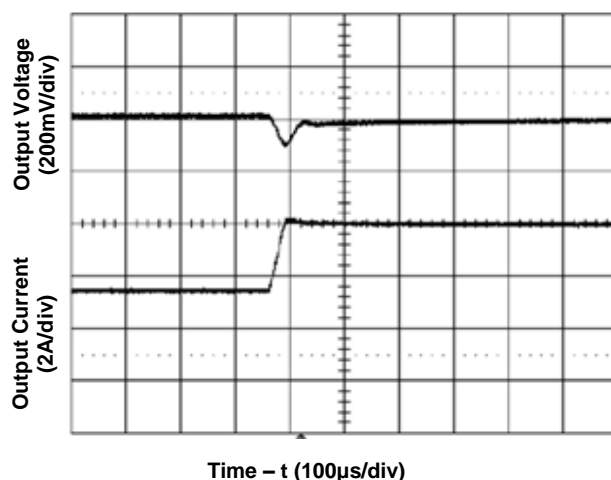


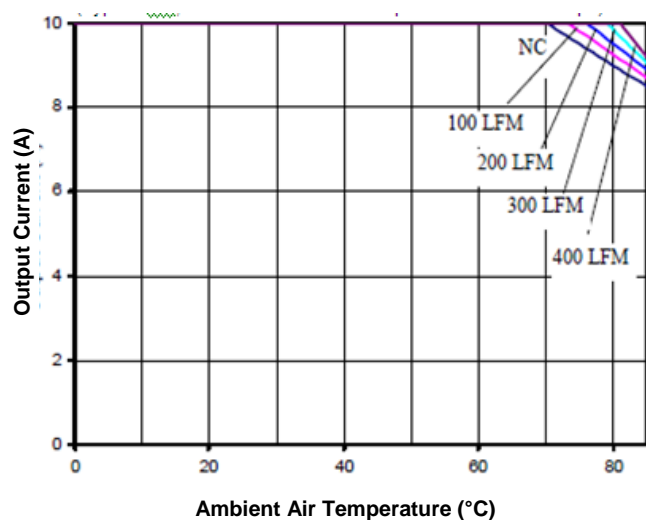
Figure 4. Output Ripple Voltage at Full Load



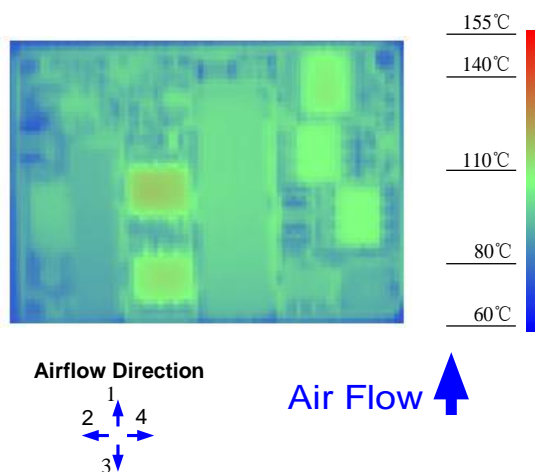
**Figure 5. Transient Load Response**  
(Typical Vin, 75% to 50% full load step at a slew rate 0.1A/µs)



**Figure 6. Transient Load Response**  
(Typical Vin, 50% to 75% full load step at a slew rate 0.1A/µs)



**Figure 7. Derating Curve for Airflow Direction 1**  
(Ref. Figure. 8 for Airflow Direction; typical Vin, open frame, unit soldered onto a fixture board.)



**Figure 8. Thermal Image for Airflow Direction 1**  
(10A output, 55°C ambient, OLFM, typical Vin, open frame, unit soldered onto a fixture board.)



## Feature Descriptions

### Remote ON/OFF

The converter can be turned on and off by changing the voltage between the ON/OFF pin and Vin(-). The SRS4 Series of converters are available with factory selectable positive logic and negative logic.

For the negative control logic, the converter is ON when the ON/OFF pin is at a logic low level and OFF when the ON/OFF pin is at a logic high level. For the positive control logic, the converter is ON when the ON/OFF pin is at a logic high level and OFF when the ON/OFF pin is at a logic low level.

With the internal pull-up circuitry, a simple external switch between the ON/OFF pin and Vin(-) can control the converter. A few example circuits for controlling the ON/OFF pin are shown in Figures 9, 10 and 11.

The logic low level is from 0V to 1.2V and the maximum sink current during logic low is 1mA. The external switch must be capable of maintaining a logic-low level while sinking up to this current. The logic high level is from 3.5V to 15V. The converter has an internal pull-up circuit that ensures the ON/OFF pin at a high logic level when the leakage current at ON/OFF pin is no greater than 50μA.

### Remote SENSE

The remote SENSE pins are used to sense the voltage at the load point to accurately regulate the load voltage and eliminate the impact of the voltage drop in the power distribution path.

SENSE(+) and SENSE(-) pins should be connected between the points where voltage regulation is desired. The voltage between the SENSE pins and the output pins must not exceed the smaller of 0.5V or 10% of typical output voltage.

$$|V_{out}(+) - V_{out}(-)| - |SENSE(+) - SENSE(-)| < \min\{0.5V, 10\%V_o\}$$

When remote sense is not used, the SENSE pins should be connected to their corresponding output pins. If the SENSE pins are left floating, the converter will deliver an output voltage slightly higher than its specified typical output voltage.

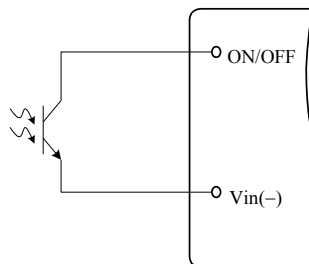


Figure 9. Opto Coupler Enable Circuit

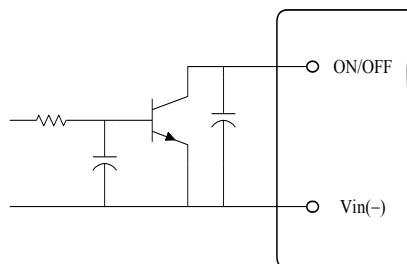


Figure 10. Open Collector Enable Circuit

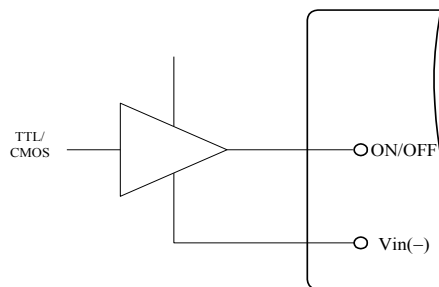


Figure 11. Direct Logic Drive

### Output Voltage Adjustment (Trim)

The trim pin allows the user to adjust the output voltage set point. To increase the output voltage, an external resistor is connected between the TRIM pin and SENSE(+). To decrease the output voltage, an external resistor is connected between the TRIM pin and SENSE(-). The output voltage trim range is 80% to 110% of the specified typical output voltage. The circuit configuration for trim down operation is shown in Figure 12.

To decrease the output voltage, the value of the external resistor should be

$$R_{down} = \left( \frac{511}{\Delta} - 10.22 \right) (k\Omega)$$



Where

$$\Delta = \left( \frac{|V_{nom} - V_{adj}|}{V_{nom}} \right) \times 100$$

and

$V_{nom}$  = Typical Output Voltage

$V_{adj}$  = Adjusted Voltage

The circuit configuration for trim up operation is shown in Figure 13. To increase the output voltage, the value of the resistor should be:

$$R_{up} = \left( \frac{5.11V_o(100 + \Delta)}{1.225\Delta} - \frac{511}{\Delta} - 10.22 \right) (k\Omega)$$

Where

$V_o$  = Typical Output Voltage

This equation applies to typical output voltage of 1.5V or higher.

As the output voltage at the converter output terminals are higher than the specified typical level when using the trim up and/or remote sense functions, it is important to make sure that the voltage at the output terminals does exceed the maximum power rating of the converter as given in the Specifications table.

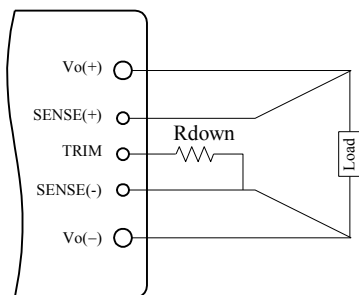


Figure 12. Circuit to Decrease Output Voltage

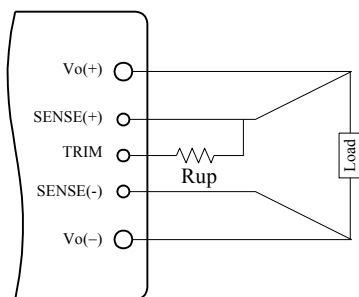


Figure 13. Circuit to Increase Output Voltage

## Input Under-Voltage Lockout

This feature prevents the converter from starting until the input voltage reaches the turn-on voltage threshold, and keeps the converter running until the input voltage falls below the turn-off voltage threshold. Both turn-on and turn-off voltage thresholds are defined in the Input Specifications table. The hysteresis prevents oscillations.

## Output Over-Current Protection (OCP)

This converter can be ordered in either latch-off or auto-restart version upon OCP, OVP, and OTP.

With the latch-off version, the converter will latch off when the load current exceeds the limit. The converter can be restarted by toggling the ON/OFF switch or recycling the input voltage.

With the auto-restart version, the converter will operate in a hiccup mode (repeatedly try to restart) until the cause of the over-current condition is cleared.

## Output Over-Voltage Protection (OVP)

With the latch-off version, the converter will latch off when the output voltage exceeds the limit. The converter can be restarted by toggling the ON/OFF switch or recycling the input voltage.

With the auto-restart version, the converter will operate in a hiccup mode (repeatedly try to restart) until the cause of the over-voltage condition is cleared.

## Over Temperature Protection (OTP)

With the latch-off version, the converter will shut down and latch off if an over-temperature condition is detected. The converter has a temperature sensor located at a carefully selected position in the converter circuit board, which represents the thermal condition of key components of the converter. The thermal shutdown circuit is designed to turn the converter off when the temperature at the sensor reaches 120°C. The module can be restarted by toggling the ON/OFF switch or recycling the input voltage.

With the auto-restart version, the converter will resume operation after the converter cools down.





## Design Considerations

As with any DC/DC converter, the stability of the SRS4 converters may be compromised if the source impedance is too high or inductive. It's desirable to keep the input source ac-impedance as low as possible. Although the converters are designed to be stable without adding external input capacitors for typical source impedance, it is recommended to add 100  $\mu$ F low ESR electrolytic capacitors at the input of the converter for each 100W output power, which reduces the potential negative impact of the source impedance on the converter stability. These electrolytic capacitors should have sufficient RMS current rating over the operating temperature range.

The converter is designed to be stable without additional output capacitors. To further reduce the output voltage ripple or improve the transient response, additional output capacitors are often used in applications. When additional output capacitors are used, a combination of ceramic capacitors and tantalum/polymer capacitors shall be used to provide good filtering while assuring the stability of the converter.

## Safety Considerations

The SRS4 Series of converters are designed in accordance with EN 60950 Safety of Information Technology Equipment Including Electrical Equipment. The converters are recognized by UL in both USA and Canada to meet the requirements in UL 60950, Safety of Information Technology Equipment and applicable Canadian Safety Requirement, and ULc 60950. Flammability ratings of the PWB and plastic components in the converter meet 94V-0.

To protect the converter and the system, an input line fuse is highly recommended on the un-grounded input end.

## Thermal Considerations

The SRS4 Series of converters can operate in various thermal environments. Due to the high efficiency and optimal heat distribution, these converters exhibit excellent thermal performance.

The maximum allowable output power of any power converter is usually determined by the electrical design and the maximum operating temperature of its components. The SRS4 Series of converters have been tested comprehensively under various conditions to

generate the derating curves with the consideration for long term reliability.

The thermal derating curves are highly influenced by the test conditions. One of the critical variables is the interface method between the converter and the test fixture board. There is no standard method in the industry for the derating tests. Some suppliers use sockets to plug in the converter, while others solder the converter into the test fixture board. It should be noticed that these two methods produce significantly different results for a given converter. When the converter is soldered into the test fixture board, the thermal performance of the converter is significantly improved compared to using sockets due to the reduction of the contact loss and the thermal impedance from the pins to the test fixture board. Other factors affecting the results include the board spacing, construction (especially copper weight, holes and openings) of the test fixture board and the spacing board, temperature measurement method and ambient temperature measurement point. The thermal derating curves in this datasheet are obtained using a PWB test fixture board and a PWB spacing board with no opening, a board-to-board spacing of 1", and the converter is soldered to the test board with thermal relieves.

Note that the natural convection condition was measured at 0.05 m/s to 0.15 m/s (10ft./min. to 30 ft./min).

### Heat Transfer without a Baseplate

With single-board DC/DC converter designs, convection heat transfer is the primary cooling means for converters without a baseplate. Therefore, airflow speed should be checked carefully for the intended operating environment. Increasing the airflow over the converter enhances the heat transfer via convection.

Figure 14 shows a recommended temperature monitoring point for open frame modules. For reliable operation, the temperature at this location should not continuously exceed 120 °C.



Figure 14. Temperature Monitoring Location



The SRS4 Series of converters have the options of using a baseplate for enhanced thermal performance.

The typical height of the converter with the baseplate option is 0.50". The use of an additional heatsink or cold-plate can further improve the thermal performance of the converter.

For reliable operation, the baseplate temperature should not continuously exceed 100 °C.

## EMC Considerations

The EMC performance of the converter is related to the layout and filtering design of the customer board. Careful layout and adequate filtering around the converter are important to confine noise generated by the switching actions in the converter and to optimize system EMC performance.

## Mechanical Information

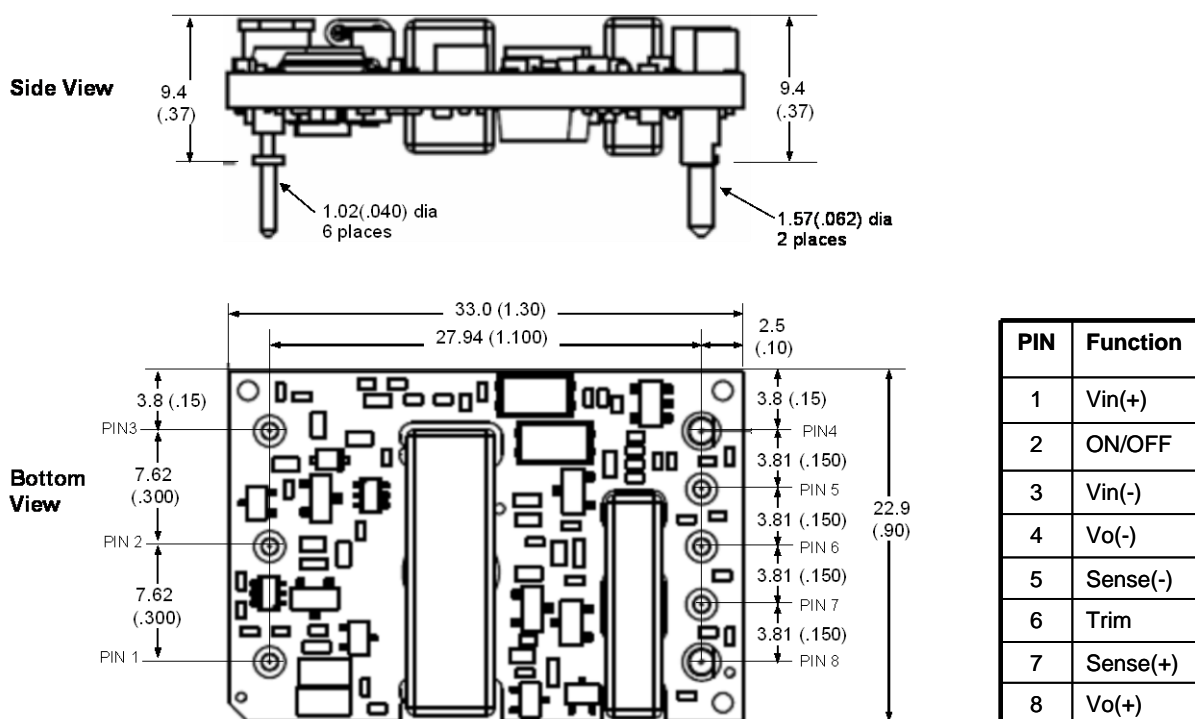


Figure 15. Open Frame Converter



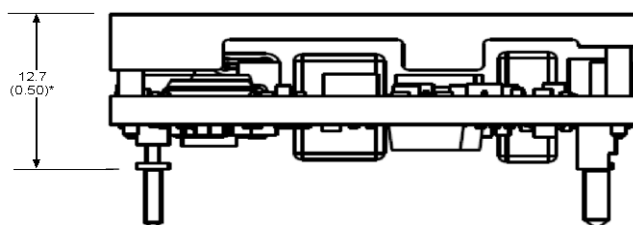


Figure 16. Converter with a Baseplate

## Notes

- 1) All dimensions in mm (inches)  
Tolerances: .x  $\pm$  .5 (.xx  $\pm$  0.02)  
.xx  $\pm$  .25 (.xxx  $\pm$  0.010)
- 2) Regular input and function pins are 1.02mm (0.040") dia. with +/- 0.10mm (0.004") tolerance; the standoff shoulders are 2.00mm (0.078") dia. with +/- 0.15mm (0.006") tolerance.
- 3) Output pins are 1.57 mm (0.062") dia. with +/- 0.10mm (0.004") tolerance; the standoff shoulders are 2.46mm (0.097") dia. with +/- 0.15mm (0.006") tolerance.
- 4) All pins are coated with 90%/10% solder, Gold, or Matte Tin finish with Nickel under plating.
- 5) Weight: 15 g open frame converter  
30 g baseplated converter
- 6) Workmanship meets or exceeds  
IPC-A-610 Class II
- 7) Torque applied on screw should not exceed 6in-lb. (0.7 Nm)
- 8) Baseplate flatness tolerance is  
0.10mm (0.004") TIR for surface



Компания «ЭлектроПласт» предлагает заключение долгосрочных отношений при поставках импортных электронных компонентов на взаимовыгодных условиях!

Наши преимущества:

- Оперативные поставки широкого спектра электронных компонентов отечественного и импортного производства напрямую от производителей и с крупнейших мировых складов;
- Поставка более 17-ти миллионов наименований электронных компонентов;
- Поставка сложных, дефицитных, либо снятых с производства позиций;
- Оперативные сроки поставки под заказ (от 5 рабочих дней);
- Экспресс доставка в любую точку России;
- Техническая поддержка проекта, помощь в подборе аналогов, поставка прототипов;
- Система менеджмента качества сертифицирована по Международному стандарту ISO 9001;
- Лицензия ФСБ на осуществление работ с использованием сведений, составляющих государственную тайну;
- Поставка специализированных компонентов (Xilinx, Altera, Analog Devices, Intersil, Interpoint, Microsemi, Aeroflex, Peregrine, Syfer, Eurofarad, Texas Instrument, Miteq, Cobham, E2V, MA-COM, Hittite, Mini-Circuits, General Dynamics и др.);

Помимо этого, одним из направлений компании «ЭлектроПласт» является направление «Источники питания». Мы предлагаем Вам помощь Конструкторского отдела:

- Подбор оптимального решения, техническое обоснование при выборе компонента;
- Подбор аналогов;
- Консультации по применению компонента;
- Поставка образцов и прототипов;
- Техническая поддержка проекта;
- Защита от снятия компонента с производства.



#### Как с нами связаться

**Телефон:** 8 (812) 309 58 32 (многоканальный)

**Факс:** 8 (812) 320-02-42

**Электронная почта:** [org@eplast1.ru](mailto:org@eplast1.ru)

**Адрес:** 198099, г. Санкт-Петербург, ул. Калинина, дом 2, корпус 4, литера А.