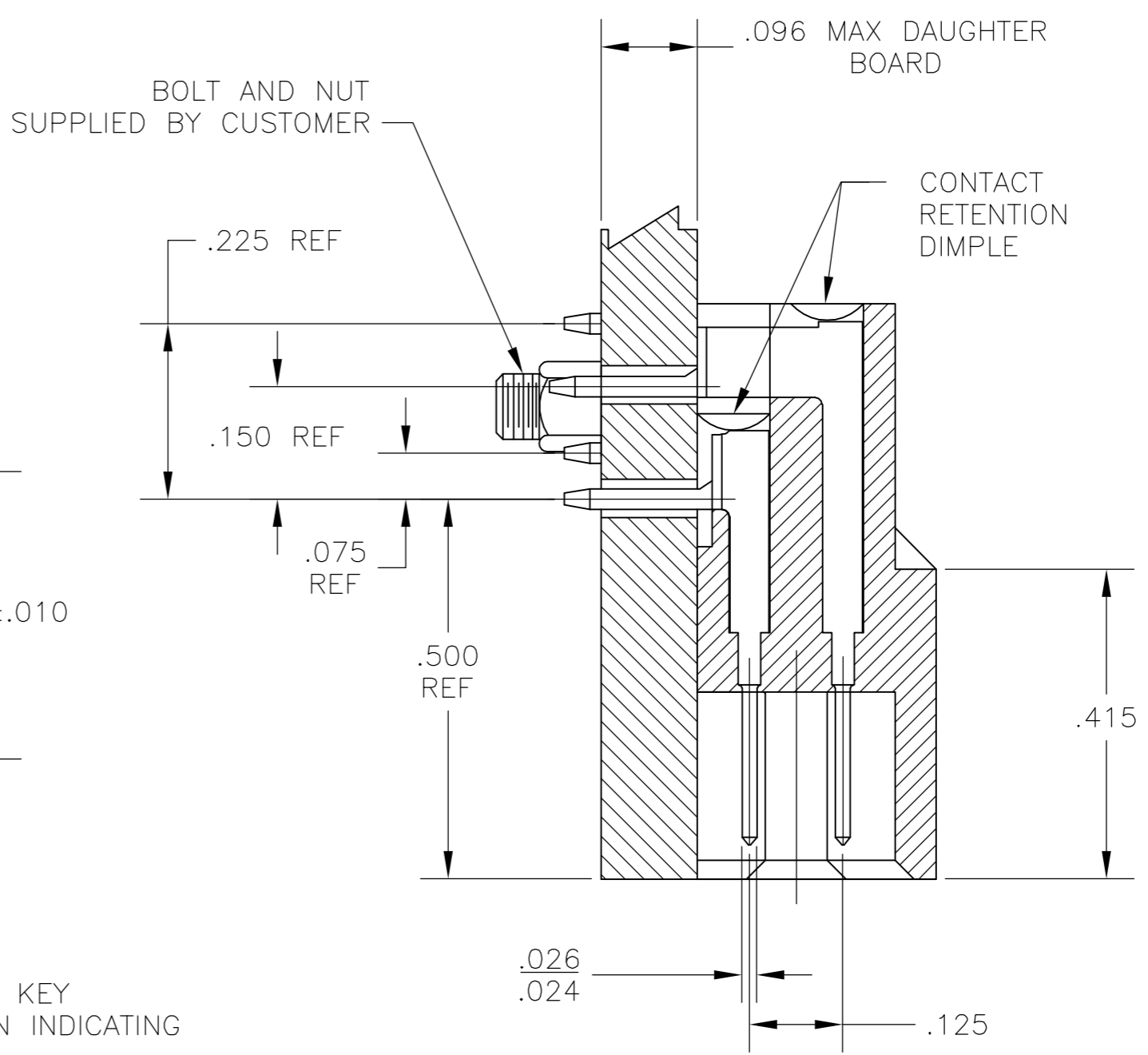
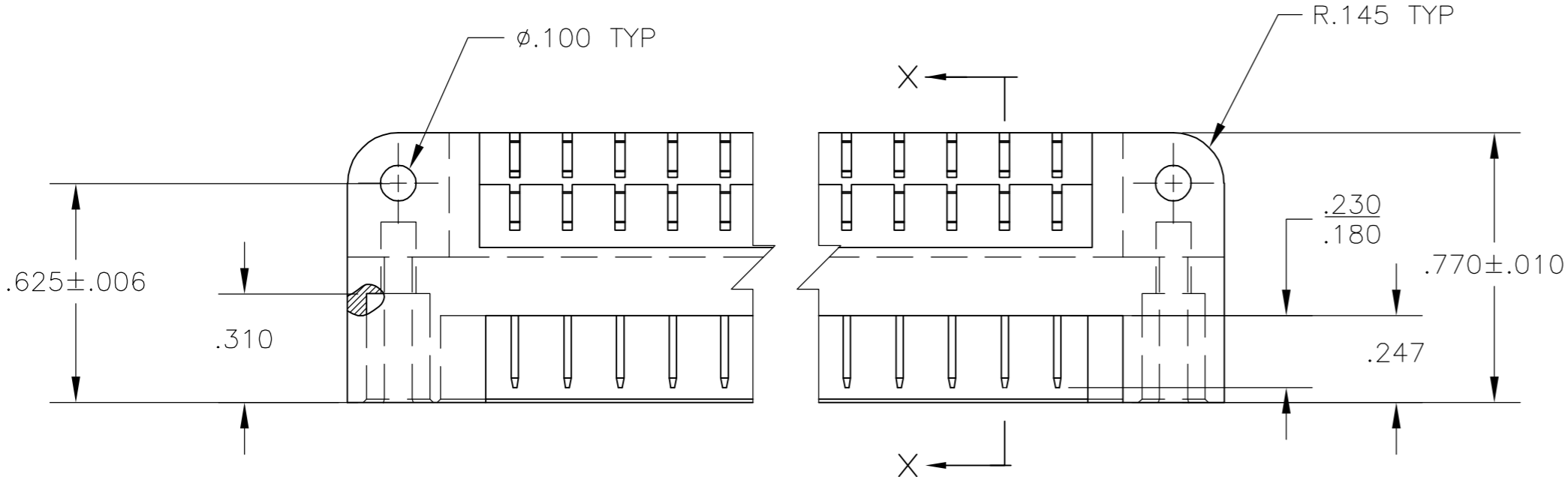
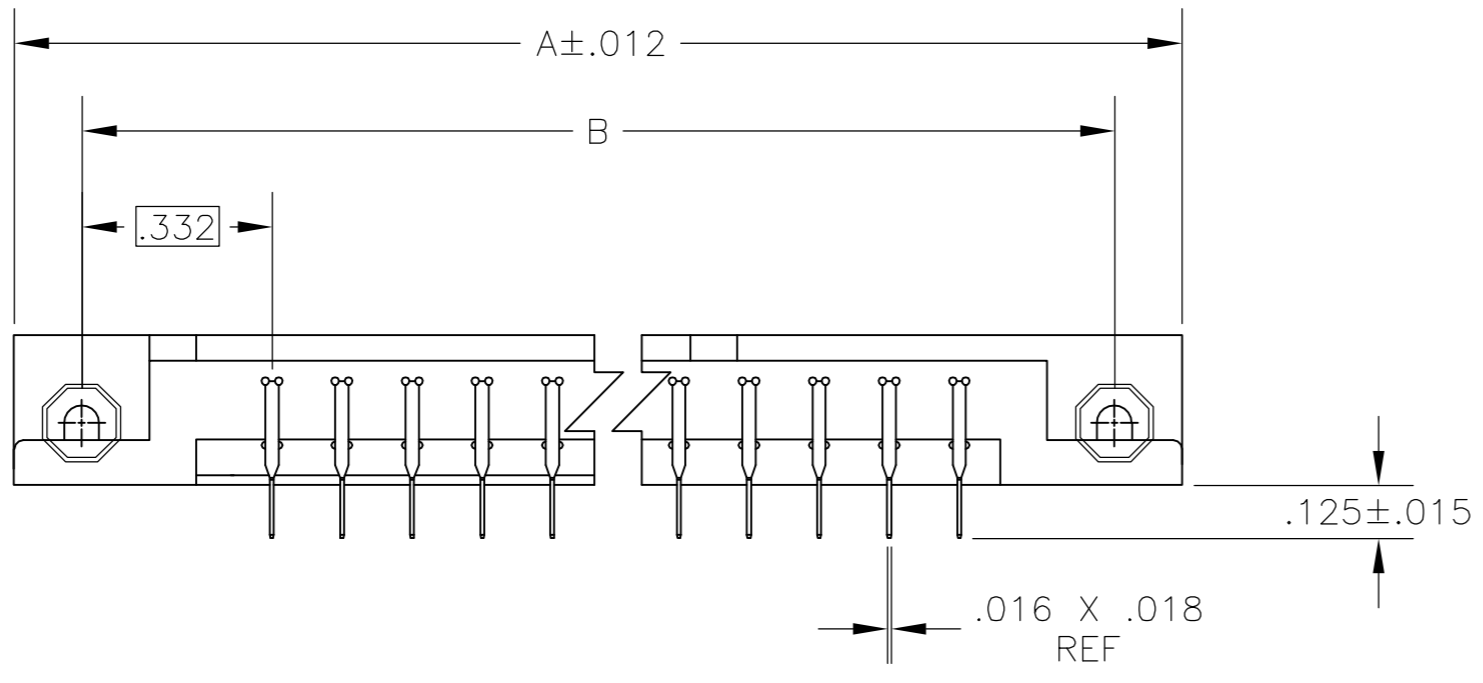
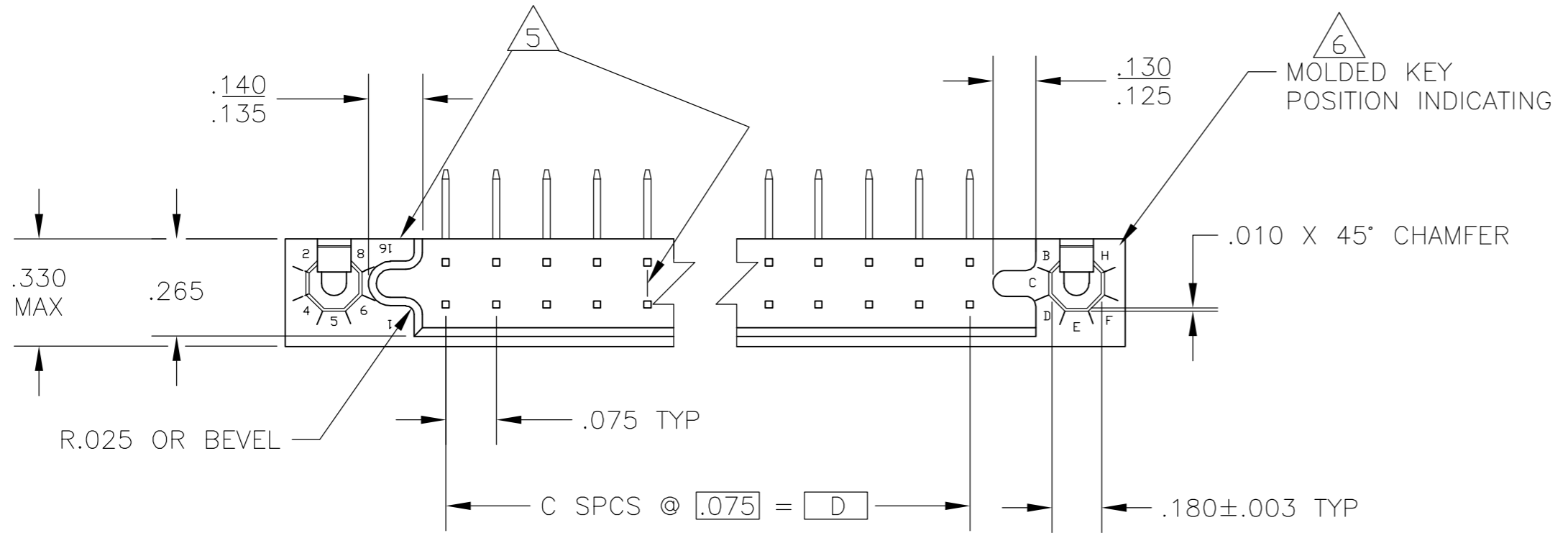


THIS DRAWING IS UNPUBLISHED. RELEASED FOR PUBLICATION  
 © COPYRIGHT BY TYCO ELECTRONICS CORPORATION. ALL RIGHTS RESERVED.

| LOC |     | DIST        |             | REVISIONS |         |      |     |
|-----|-----|-------------|-------------|-----------|---------|------|-----|
| P   | LTR | DESCRIPTION |             | DATE      | DWN     | APVD |     |
| DF  | X5  | D           | REV PER ECO | 05-015613 | 18JAN06 | BL   | CCT |



SECTION X-X  
SCALE 10:1

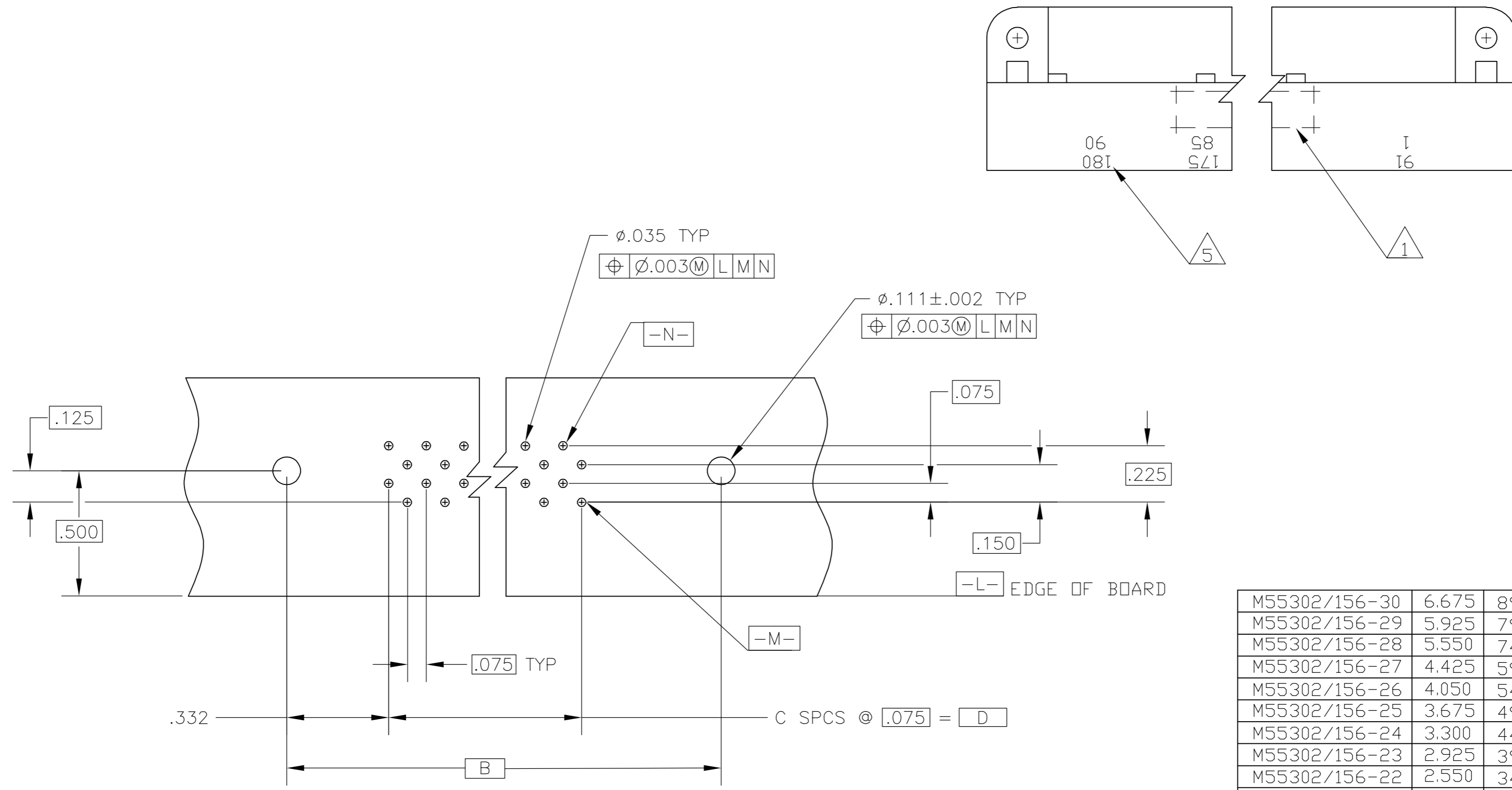


|                                                                                                                                                                                                                                                                                                                                                   |   |                                   |                                                                |             |                        |   |   |       |   |   |       |   |   |       |   |   |        |   |   |        |   |   |                                  |            |
|---------------------------------------------------------------------------------------------------------------------------------------------------------------------------------------------------------------------------------------------------------------------------------------------------------------------------------------------------|---|-----------------------------------|----------------------------------------------------------------|-------------|------------------------|---|---|-------|---|---|-------|---|---|-------|---|---|--------|---|---|--------|---|---|----------------------------------|------------|
| THIS DRAWING IS A CONTROLLED DOCUMENT.                                                                                                                                                                                                                                                                                                            |   | DWN<br>B. LATTUCA<br>18JAN2006    | <br>Tyco Electronics Corporation<br>Harrisburg, PA 17105-3608  |             |                        |   |   |       |   |   |       |   |   |       |   |   |        |   |   |        |   |   |                                  |            |
| DIMENSIONS:<br>INCHES                                                                                                                                                                                                                                                                                                                             |   | CHK<br>C. C. THOMAS<br>18JAN2006  |                                                                |             |                        |   |   |       |   |   |       |   |   |       |   |   |        |   |   |        |   |   |                                  |            |
| TOLERANCES UNLESS OTHERWISE SPECIFIED:                                                                                                                                                                                                                                                                                                            |   | APVD<br>C. C. THOMAS<br>18JAN2006 | NAME<br>PIN ASSEMBLY, RIGHT ANGLE<br>751 SERIES, BOX CONNECTOR |             |                        |   |   |       |   |   |       |   |   |       |   |   |        |   |   |        |   |   |                                  |            |
| <table border="1"> <tr><td>0 PLC</td><td>±</td><td>-</td></tr> <tr><td>1 PLC</td><td>±</td><td>-</td></tr> <tr><td>2 PLC</td><td>±</td><td>-</td></tr> <tr><td>3 PLC</td><td>±</td><td>-</td></tr> <tr><td>4 PLC</td><td>±</td><td>-</td></tr> <tr><td>ANGLES</td><td>±</td><td>-</td></tr> <tr><td>FINISH</td><td>±</td><td>-</td></tr> </table> |   | 0 PLC                             | ±                                                              | -           | 1 PLC                  | ± | - | 2 PLC | ± | - | 3 PLC | ± | - | 4 PLC | ± | - | ANGLES | ± | - | FINISH | ± | - | PRODUCT SPEC<br>APPLICATION SPEC | SIZE<br>A2 |
| 0 PLC                                                                                                                                                                                                                                                                                                                                             | ± | -                                 |                                                                |             |                        |   |   |       |   |   |       |   |   |       |   |   |        |   |   |        |   |   |                                  |            |
| 1 PLC                                                                                                                                                                                                                                                                                                                                             | ± | -                                 |                                                                |             |                        |   |   |       |   |   |       |   |   |       |   |   |        |   |   |        |   |   |                                  |            |
| 2 PLC                                                                                                                                                                                                                                                                                                                                             | ± | -                                 |                                                                |             |                        |   |   |       |   |   |       |   |   |       |   |   |        |   |   |        |   |   |                                  |            |
| 3 PLC                                                                                                                                                                                                                                                                                                                                             | ± | -                                 |                                                                |             |                        |   |   |       |   |   |       |   |   |       |   |   |        |   |   |        |   |   |                                  |            |
| 4 PLC                                                                                                                                                                                                                                                                                                                                             | ± | -                                 |                                                                |             |                        |   |   |       |   |   |       |   |   |       |   |   |        |   |   |        |   |   |                                  |            |
| ANGLES                                                                                                                                                                                                                                                                                                                                            | ± | -                                 |                                                                |             |                        |   |   |       |   |   |       |   |   |       |   |   |        |   |   |        |   |   |                                  |            |
| FINISH                                                                                                                                                                                                                                                                                                                                            | ± | -                                 |                                                                |             |                        |   |   |       |   |   |       |   |   |       |   |   |        |   |   |        |   |   |                                  |            |
| MATERIAL                                                                                                                                                                                                                                                                                                                                          |   | WEIGHT<br>-                       | CAGE CODE<br>00779                                             |             |                        |   |   |       |   |   |       |   |   |       |   |   |        |   |   |        |   |   |                                  |            |
| <table border="1"> <tr><td>2</td><td>3</td></tr> </table>                                                                                                                                                                                                                                                                                         |   | 2                                 | 3                                                              | FINISH<br>3 | DRAWING NO<br>C=531720 |   |   |       |   |   |       |   |   |       |   |   |        |   |   |        |   |   |                                  |            |
| 2                                                                                                                                                                                                                                                                                                                                                 | 3 |                                   |                                                                |             |                        |   |   |       |   |   |       |   |   |       |   |   |        |   |   |        |   |   |                                  |            |
| CUSTOMER DRAWING                                                                                                                                                                                                                                                                                                                                  |   | SCALE<br>1:1                      | RESTRICTED TO<br>-                                             |             |                        |   |   |       |   |   |       |   |   |       |   |   |        |   |   |        |   |   |                                  |            |
|                                                                                                                                                                                                                                                                                                                                                   |   | SHEET<br>1 of 2                   | REV<br>D                                                       |             |                        |   |   |       |   |   |       |   |   |       |   |   |        |   |   |        |   |   |                                  |            |

531720

THIS DRAWING IS UNPUBLISHED. RELEASED FOR PUBLICATION  
 © COPYRIGHT BY TYCO ELECTRONICS CORPORATION. ALL RIGHTS RESERVED.

| LOC |     | DIST        |  | REVISIONS             |           |      |     |
|-----|-----|-------------|--|-----------------------|-----------|------|-----|
| P   | LTR | DESCRIPTION |  | DATE                  | DWN       | APVD |     |
| DF  | X5  | D           |  | REV PER ECO 05-015613 | 18JAN2006 | BL   | CCT |



RECOMMENDED P.C. BOARD LAYOUT  
(CONNECTOR SIDE)

- 1 AMP, PART NUMBER, MILITARY PART NO, DATE CODE, & 00779 MARKED THIS AREA.
- 2 HOUSING MATERIAL: GLASS FILLED POLYESTER. COLOR: BLUE.
- 3 CONTACT MATERIAL: BRASS  
FINISH: .000050 GOLD OVER .000050 NICKEL IN CONTACT AREA, TIN-LEAD PLATE OVER NICKEL ON SOLDER TAILS.  
MIL-C-55302 GROUP A INSPECTION REQUIRED
- 5 NUMBERS & LINES INDICATING EVERY 5 CAVITIES MARKED ON MATING FACE. NUMBERS INDICATING EVERY 5 CAVITIES MARKED ON SIDE.
- 6 KEY POSITION IDENTIFICATION MOLDED ON SURFACE SHOWN.

|                      |       |    |       |       |           |            |
|----------------------|-------|----|-------|-------|-----------|------------|
| M55302/156-30        | 6.675 | 89 | 7.340 | 7.630 | 180       | 1-531720-5 |
| M55302/156-29        | 5.925 | 79 | 6.590 | 6.880 | 160       | 1-531720-4 |
| M55302/156-28        | 5.550 | 74 | 6.215 | 6.505 | 150       | 1-531720-3 |
| M55302/156-27        | 4.425 | 59 | 5.090 | 5.380 | 120       | 1-531720-2 |
| M55302/156-26        | 4.050 | 54 | 4.715 | 5.005 | 110       | 1-531720-1 |
| M55302/156-25        | 3.675 | 49 | 4.340 | 4.630 | 100       | 1-531720-0 |
| M55302/156-24        | 3.300 | 44 | 3.965 | 4.255 | 90        | 531720-9   |
| M55302/156-23        | 2.925 | 39 | 3.590 | 3.880 | 80        | 531720-8   |
| M55302/156-22        | 2.550 | 34 | 3.215 | 3.505 | 70        | 531720-7   |
| M55302/156-21        | 2.175 | 29 | 2.840 | 3.130 | 60        | 531720-6   |
| M55302/156-20        | 1.800 | 24 | 2.465 | 2.755 | 50        | 531720-5   |
| M55302/156-19        | 1.425 | 19 | 2.090 | 2.380 | 40        | 531720-4   |
| M55302/156-18        | 1.050 | 14 | 1.715 | 2.005 | 30        | 531720-3   |
| M55302/156-17        | .675  | 9  | 1.340 | 1.630 | 20        | 531720-2   |
| M55302/156-16        | .300  | 4  | .965  | 1.255 | 10        | 531720-1   |
| MILITARY PART NUMBER | D     | C  | B     | A     | NO OF POS | PART NO    |

|                                        |                                        |                                  |                                                           |           |            |               |
|----------------------------------------|----------------------------------------|----------------------------------|-----------------------------------------------------------|-----------|------------|---------------|
| THIS DRAWING IS A CONTROLLED DOCUMENT. |                                        | DWN<br>B. LATTUCA<br>18JAN2006   | Tyco Electronics Corporation<br>Harrisburg, PA 17105-3608 |           |            |               |
| DIMENSIONS:<br>INCHES                  | TOLERANCES UNLESS OTHERWISE SPECIFIED: | CHK<br>C.C. THOMAS<br>18JAN2006  | NAME<br>C.C. THOMAS<br>18JAN2006                          |           |            |               |
|                                        | 0 PLC ± -                              | APVD<br>C.C. THOMAS<br>18JAN2006 | PRODUCT SPEC                                              |           |            |               |
|                                        | 1 PLC ± -                              | APPLICATION SPEC                 | -                                                         |           |            |               |
| MATERIAL                               | FINISH                                 | WEIGHT                           | SIZE                                                      | CAGE CODE | DRAWING NO | RESTRICTED TO |
| 2 3                                    | 3                                      | -                                | A2                                                        | 00779     | C=531720   | -             |
| CUSTOMER DRAWING                       |                                        |                                  | SCALE                                                     | SHEET     | REV        |               |
|                                        |                                        |                                  | 1:1                                                       | 2 of 2    | D          |               |



Компания «ЭлектроПласт» предлагает заключение долгосрочных отношений при поставках импортных электронных компонентов на взаимовыгодных условиях!

Наши преимущества:

- Оперативные поставки широкого спектра электронных компонентов отечественного и импортного производства напрямую от производителей и с крупнейших мировых складов;
- Поставка более 17-ти миллионов наименований электронных компонентов;
- Поставка сложных, дефицитных, либо снятых с производства позиций;
- Оперативные сроки поставки под заказ (от 5 рабочих дней);
- Экспресс доставка в любую точку России;
- Техническая поддержка проекта, помощь в подборе аналогов, поставка прототипов;
- Система менеджмента качества сертифицирована по Международному стандарту ISO 9001;
- Лицензия ФСБ на осуществление работ с использованием сведений, составляющих государственную тайну;
- Поставка специализированных компонентов (Xilinx, Altera, Analog Devices, Intersil, Interpoint, Microsemi, Aeroflex, Peregrine, Syfer, Eurofarad, Texas Instrument, Miteq, Cobham, E2V, MA-COM, Hittite, Mini-Circuits, General Dynamics и др.);

Помимо этого, одним из направлений компании «ЭлектроПласт» является направление «Источники питания». Мы предлагаем Вам помощь Конструкторского отдела:

- Подбор оптимального решения, техническое обоснование при выборе компонента;
- Подбор аналогов;
- Консультации по применению компонента;
- Поставка образцов и прототипов;
- Техническая поддержка проекта;
- Защита от снятия компонента с производства.



#### Как с нами связаться

**Телефон:** 8 (812) 309 58 32 (многоканальный)

**Факс:** 8 (812) 320-02-42

**Электронная почта:** [org@eplast1.ru](mailto:org@eplast1.ru)

**Адрес:** 198099, г. Санкт-Петербург, ул. Калинина, дом 2, корпус 4, литера А.