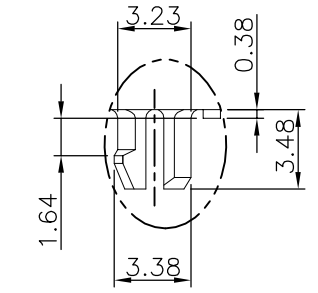


THIS DRAWING IS UNPUBLISHED. RELEASED FOR PUBLICATION
 © COPYRIGHT 2011 BY TYCO ELECTRONICS CORPORATION. ALL RIGHTS RESERVED.

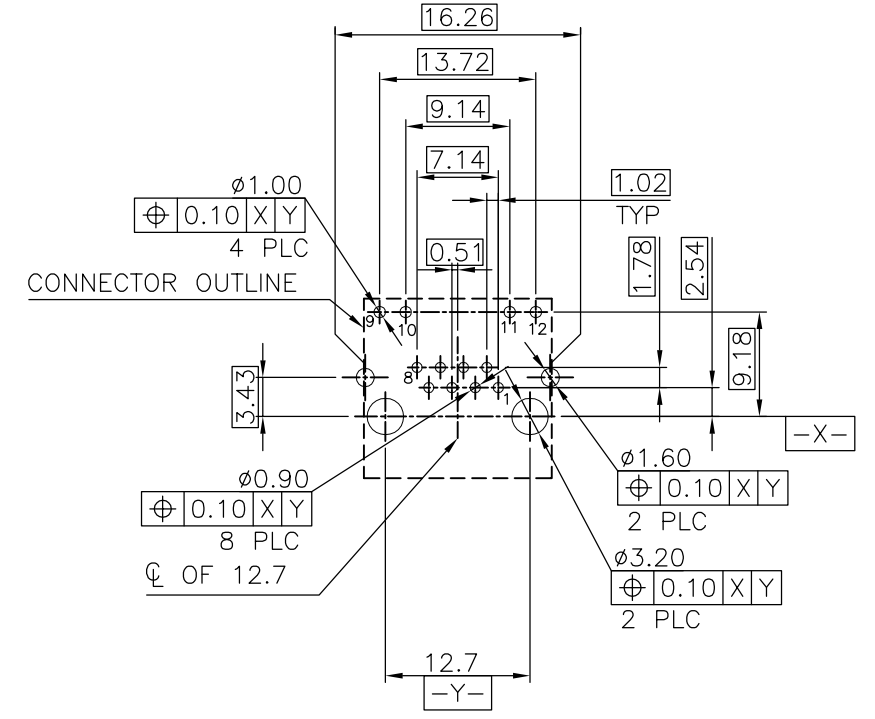
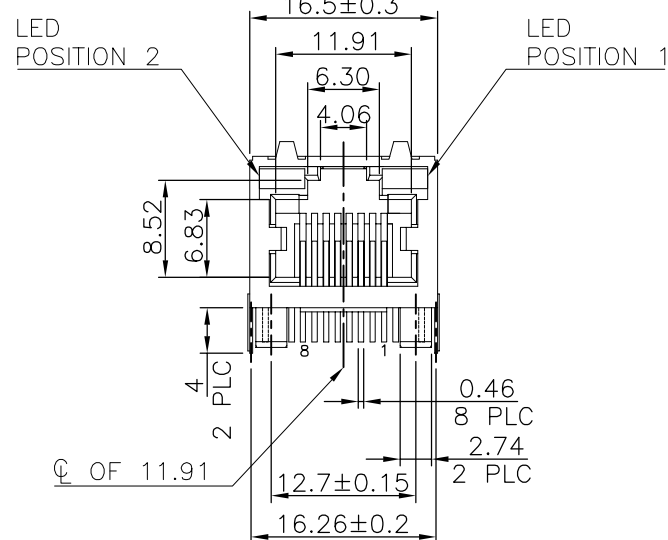
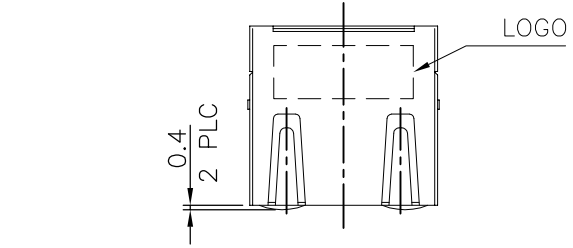
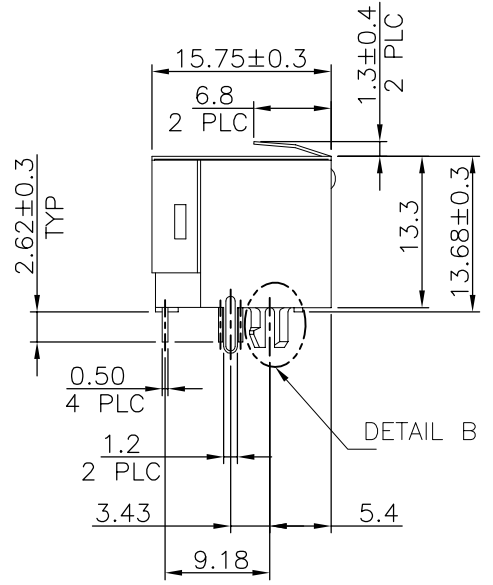
LOC		DIST		REVISIONS					
DW				P	LTR	DESCRIPTION	DATE	DWN	APVD
					B4	REVISED (ECO-14-012616), OBSOLETE 3-6.	30DEC2014	LL	SH

LED SCHEMATIC	
POSITION 2	POSITION 1
GREEN	YELLOW
9+ - > -10	11+ - > -12
FOR 1734320-X	



DETAIL B (SCALE 2:1)

LED SCHEMATIC	
POSITION 2	POSITION 1
YELLOW	GREEN
9+ - > -10	11+ - > -12
FOR 1-1734320-X	



RECOMMENDED PCB LAYOUT
 TOLERANCE: ±0.05 (TOP VIEW)

LED SCHEMATIC	
POSITION 2	POSITION 1
GREEN	GREEN
9+ - > -10	11+ - > -12
	YELLOW
FOR 4-1734320-X	

5 OBSOLETE	GREEN	GREEN/YELLOW	1.27µm [50µ"]	4=1734320=4
			0.762µm [30µ"]	4=1734320=3
			0.381µm [15µ"]	4=1734320=2
5 OBSOLETE	YELLOW	GREEN	0.152µm [6µ"]	4=1734320=1
			1.27µm [50µ"]	1=1734320=4
			0.762µm [30µ"]	1=1734320=3
5 OBSOLETE	GREEN	YELLOW	0.381µm [15µ"]	1=1734320=2
			0.152µm [6µ"]	1=1734320=1
			1.27µm [50µ"]	1734320=4
5 OBSOLETE	GREEN	YELLOW	0.762µm [30µ"]	1734320=3
			0.381µm [15µ"]	1734320=2
			0.152µm [6µ"]	1734320=1
POSITION 2 POSITION 1		MIN. GOLD THICKNESS	PART NUMBER	
INDICATOR COLOR				

- NOTE:
- MATERIAL:
 HOUSING: PA46, WITH 30% GF.
 UL 94V-0, BLACK COLOR.
 CONTACTS: PHOSPHOR BRONZE.
 SHELL: BRASS.
 LED SOLDER TAIL: STEEL.
 - FINISH:
 CONTACTS: (SEE TABLE) GOLD PLATED ON CONTACT AREA,
 GOLD PLATED ON SOLDER TAIL,
 WITH ENTIRE CONTACT UNDERPLATED
 1.27µm [50µ"] MIN. NICKEL.
 SHELL: 0.508µm [20µ"] MIN. NICKEL PLATED.
 LED SOLDER TAIL: 2.159µm [85µ"] MIN. TIN PLATED.
 - RECOMMENDED PCB THICKNESS: 1.6mm.
 - WAVE SOLDER CAPABLE TO 265°C PER TE SPEC 109-202, CONDITION B.
- 5 OBSOLETE PARTS: OBSOLETE CIS STREAMLINING PER D.RENAUD/D.SINISI

THIS DRAWING IS A CONTROLLED DOCUMENT.		DWN	B. HSING	09JUN2009	 TE Connectivity	
DIMENSIONS: mm		CHK	S. CHIEN	09JUN2009		
TOLERANCES UNLESS OTHERWISE SPECIFIED:		APVD	W. KODAMA	09JUN2009		
0 PLC ± - 1 PLC ± 0.3 2 PLC ± 0.2 3 PLC ± 0.15 4 PLC ± - ANGLES ± 3°		PRODUCT SPEC 108-57535 APPLICATION SPEC		NAME		
MATERIAL SEE NOTE		FINISH SEE NOTE		WEIGHT	MODULAR JACK CONNECTOR RJ45, SINGLE PORT, SIDE ENTRY, DIP TYPE	
		CUSTOMER DRAWING		4.95 GRAMS	SIZE	A3
					CAGE CODE	00779
					DRAWING NO	C=1734320
					RESTRICTED TO	
					SCALE	-
					SHEET	1 OF 6
					REV	B4

THIS DRAWING IS UNPUBLISHED.

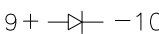
RELEASED FOR PUBLICATION

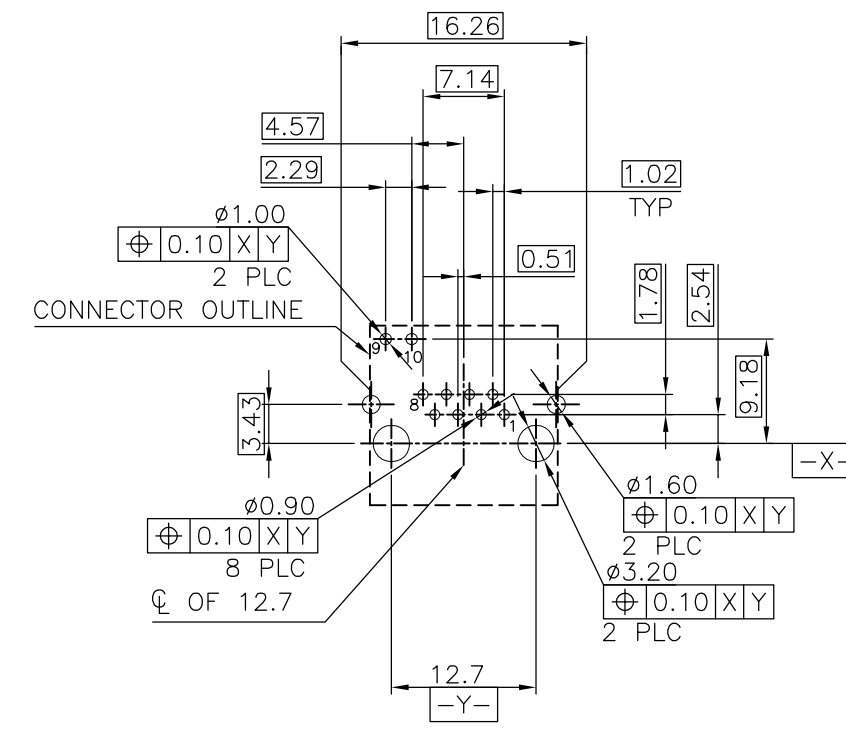
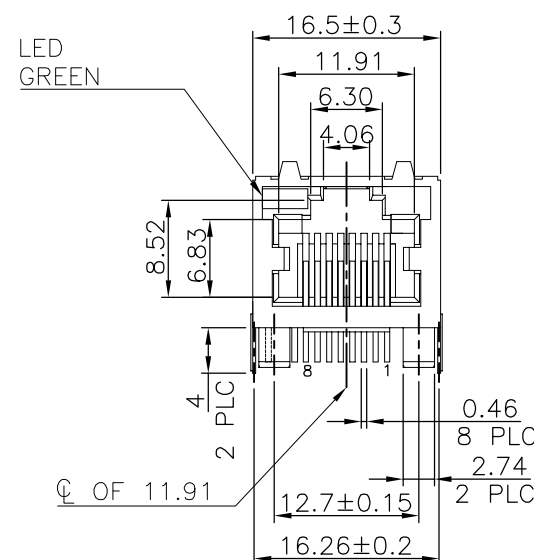
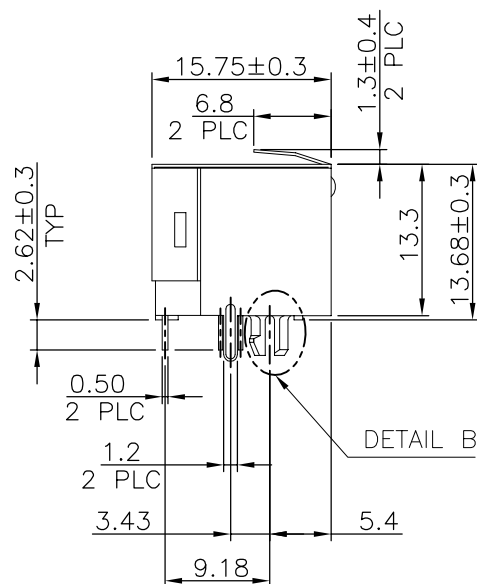
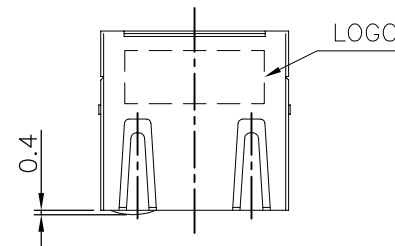
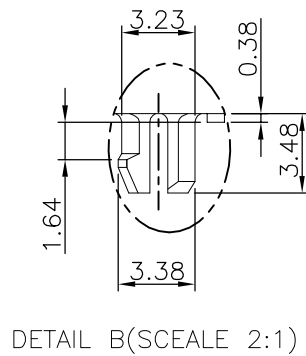
© COPYRIGHT 2011 BY TYCO ELECTRONICS CORPORATION. ALL RIGHTS RESERVED.

LOC DW DIST

REVISIONS


P	LTR	DESCRIPTION	DATE	DWN	APVD
		SEE SHEET 1.			


LED SCHEMATIC
GREEN
9+  -10



RECOMMENDED PCB LAYOUT TOLERANCE: ±0.05 (TOP VIEW)

NOTE:

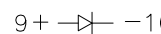
- MATERIAL:
HOUSING: PA46, WITH 30% GF.
UL 94V-0, BLACK COLOR.
CONTACTS: PHOSPHOR BRONZE.
SHELL: BRASS.
LED SOLDER TAIL: STEEL.
 - FINISH:
CONTACTS: (SEE TABLE) GOLD PLATED ON CONTACT AREA,
GOLD PLATED ON SOLDER TAIL,
WITH ENTIRE CONTACT UNDERPLATED
1.27µm [50µ"] MIN. NICKEL.
SHELL: 0.508µm [20µ"] MIN. NICKEL PLATED.
LED SOLDER TAIL: 2.159µm [85µ"] MIN. TIN PLATED.
 - RECOMMENDED PCB THICKNESS: 1.6mm.
 - WAVE SOLDER CAPABLE TO 265°C PER TE SPEC 109-202, CONDITION B.
-  OBSOLETE PARTS: OBSOLETE CIS STREAMLINING PER D.RENAUD/D.SINISI

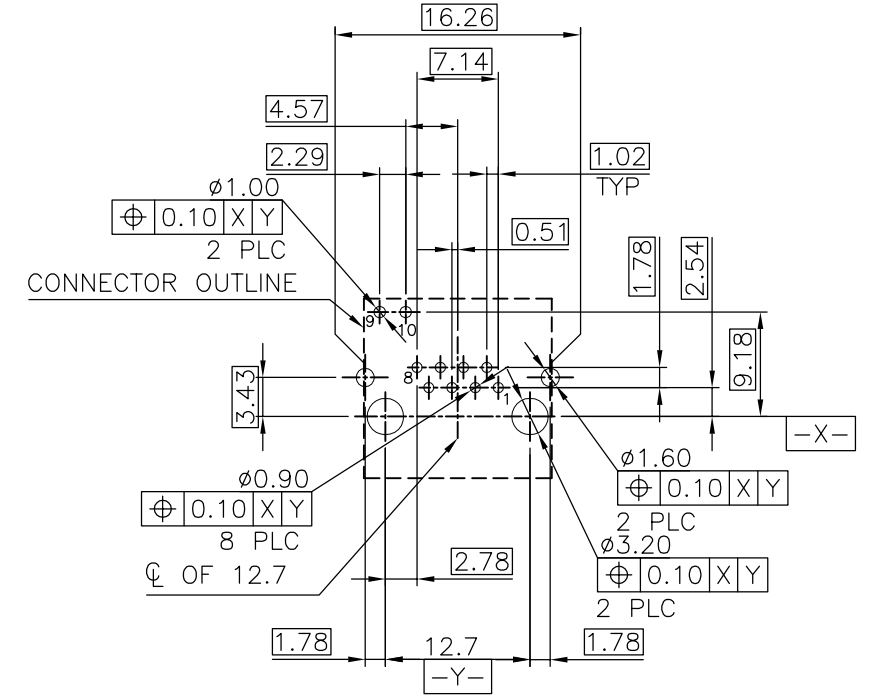
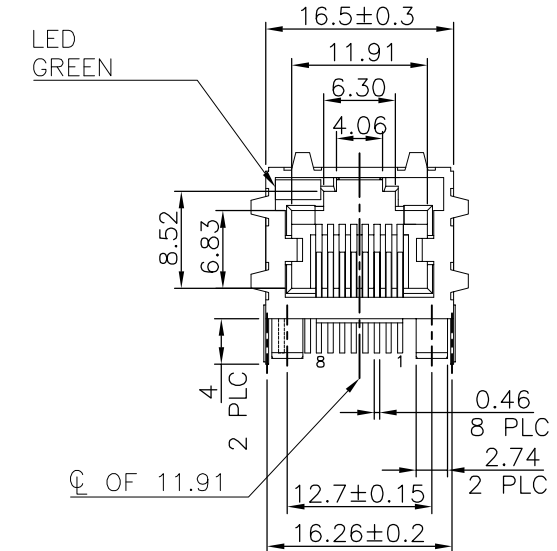
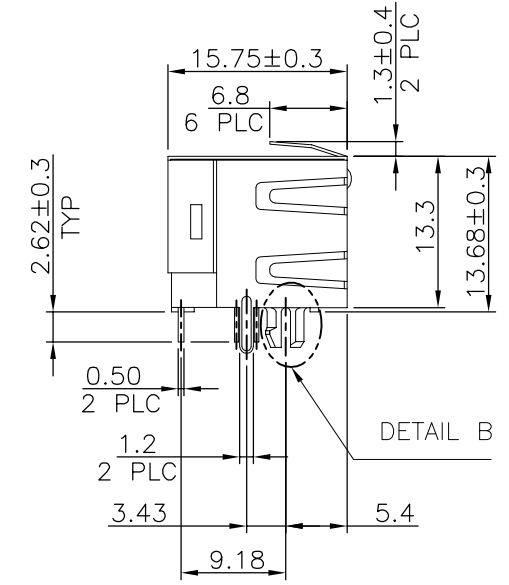
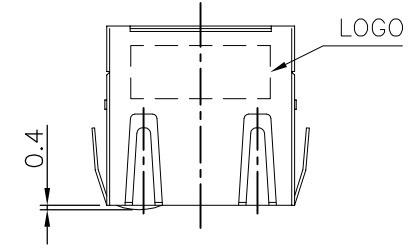
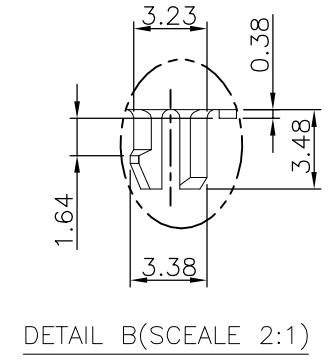
	1.27µm [50µ"]	2=1734320=4
	0.762µm [30µ"]	2=1734320=3
	0.381µm [15µ"]	2=1734320=2
	0.152µm [6µ"]	2=1734320=1
	MIN. GOLD THICKNESS	PART NUMBER

THIS DRAWING IS A CONTROLLED DOCUMENT.		DWN	TE Connectivity	
DIMENSIONS: mm		CHK	NAME	
TOLERANCES UNLESS OTHERWISE SPECIFIED:		APVD	MODULAR JACK CONNECTOR RJ45, SINGLE PORT, SIDE ENTRY, DIP TYPE	
0 PLC ± -		PRODUCT SPEC	SIZE	CAGE CODE
1 PLC ± 0.3		APPLICATION SPEC	A3	00779
2 PLC ± 0.2		WEIGHT	DRAWING NO	C=1734320
3 PLC ± 0.15		CUSTOMER DRAWING	RESTRICTED TO	
4 PLC ± -			SCALE	SHEET
ANGLES ± 3'			-	2 OF 6
MATERIAL	FINISH		REV	B4

THIS DRAWING IS UNPUBLISHED. RELEASED FOR PUBLICATION
 © COPYRIGHT 2011 BY TYCO ELECTRONICS CORPORATION. ALL RIGHTS RESERVED.

LOC	DIST	REVISIONS			
P	LTR	DESCRIPTION	DATE	DWN	APVD
DW		SEE SHEET 1.			

LED SCHEMATIC
GREEN
9+  -10




RECOMMENDED PCB LAYOUT
 TOLERANCE: ±0.05 (TOP VIEW)

NOTE:

- MATERIAL:
 HOUSING: PA46, WITH 30% GF.
 UL 94V-0, BLACK COLOR.
 CONTACTS: PHOSPHOR BRONZE.
 SHELL: BRASS.
 LED SOLDER TAIL: STEEL.
 - FINISH:
 CONTACTS: (SEE TABLE) GOLD PLATED ON CONTACT AREA,
 GOLD PLATED ON SOLDER TAIL,
 WITH ENTIRE CONTACT UNDERPLATED
 1.27µm [50µ"] MIN. NICKEL.
 SHELL: 0.508µm [20µ"] MIN. NICKEL PLATED.
 LED SOLDER TAIL: 2.159µm [85µ"] MIN. TIN PLATED.
 - RECOMMENDED PCB THICKNESS: 1.6mm.
 - WAVE SOLDER CAPABLE TO 265°C PER TE SPEC 109-202, CONDITION B.
- ⚠️ OBSOLETE PARTS: OBSOLETE CIS STREAMLINING PER D.RENAUD/D.SINISI

⚠️ OBSOLETE	1.27µm [50µ"]	3-1734320-4
	0.762µm [30µ"]	3-1734320-3
	0.381µm [15µ"]	3-1734320-2
⚠️ OBSOLETE	0.152µm [6µ"]	3-1734320-1
	MIN. GOLD THICKNESS	PART NUMBER

THIS DRAWING IS A CONTROLLED DOCUMENT.		DWN		 TE Connectivity	
DIMENSIONS: mm		CHK			
TOLERANCES UNLESS OTHERWISE SPECIFIED:		APVD		NAME	
0 PLC ± - 1 PLC ± 0.3 2 PLC ± 0.2 3 PLC ± 0.15 4 PLC ± - ANGLES ± 3°		PRODUCT SPEC		MODULAR JACK CONNECTOR RJ45, SINGLE PORT, SIDE ENTRY, DIP TYPE	
MATERIAL		APPLICATION SPEC		SIZE	
FINISH		WEIGHT		CAGE CODE	
		CUSTOMER DRAWING		DRAWING NO	
				RESTRICTED TO	
				A3 00779 C=1734320	
				SCALE	
				SHEET 3 OF 6	
				REV B4	

THIS DRAWING IS UNPUBLISHED.

RELEASED FOR PUBLICATION

© COPYRIGHT 2011 BY TYCO ELECTRONICS CORPORATION. ALL RIGHTS RESERVED.

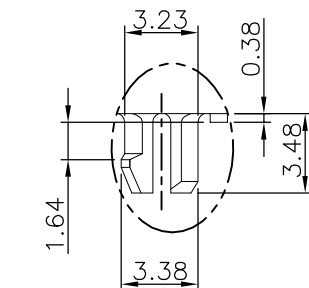
LOC DW DIST

REVISIONS

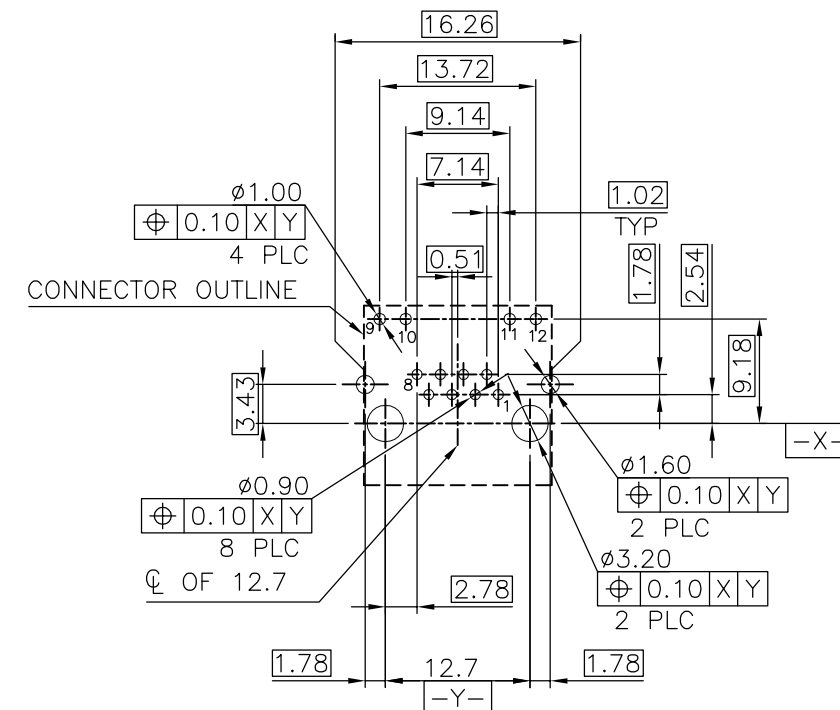
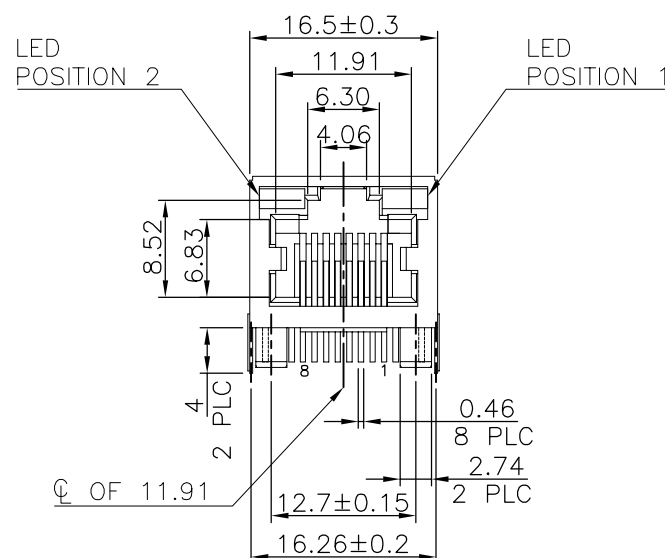
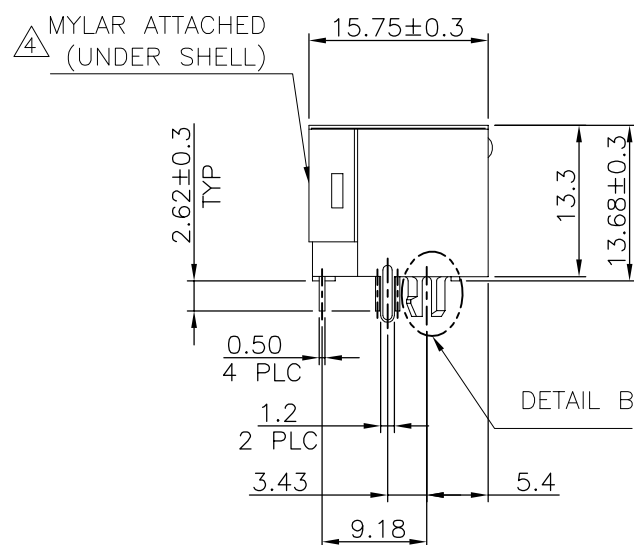
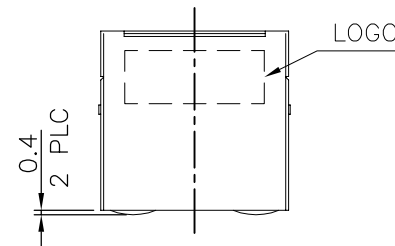
P	LTR	DESCRIPTION	DATE	DWN	APVD
		SEE SHEET 1.			

LED SCHEMATIC	
POSITION 2	POSITION 1
GREEN	YELLOW
9+ -10	11+ -12
FOR 5-1734320-1~4	

LED SCHEMATIC	
POSITION 2	POSITION 1
YELLOW	GREEN
9+ -10	11+ -12
FOR 5-1734320-5~8	



DETAIL B(SCALE 2:1)



RECOMMENDED PCB LAYOUT TOLERANCE: ±0.05 (TOP VIEW)

NOTE:

- MATERIAL:
HOUSING: PA46, WITH 30% GF.
UL 94V-0, BLACK COLOR.
CONTACTS: PHOSPHOR BRONZE.
SHELL: BRASS.
LED SOLDER TAIL: STEEL.
MYLAR: SILICONE POLYMER.
- FINISH:
CONTACTS: (SEE TABLE) GOLD PLATED ON CONTACT AREA,
GOLD PLATED ON SOLDER TAIL,
WITH ENTIRE CONTACT UNDERPLATED
1.27µm [50µ"] MIN. NICKEL.
SHELL: 0.508µm [20µ"] MIN. NICKEL PLATED.
LED SOLDER TAIL: 2.159µm [85µ"] MIN. TIN PLATED.
- RECOMMENDED PCB THICKNESS: 1.6mm.
- MYLAR ATTACHED UNDER SHELL.
- WAVE SOLDER CAPABLE TO 265°C PER TE SPEC 109-202, CONDITION B.

OBSOLETE	YELLOW	GREEN	1.27µm [50µ"]	5-1734320-8
			0.762µm [30µ"]	5-1734320-7
OBSOLETE	GREEN	YELLOW	0.381µm [15µ"]	5-1734320-6
			0.152µm [6µ"]	5-1734320-5
			1.27µm [50µ"]	5-1734320-4
OBSOLETE	GREEN	YELLOW	0.762µm [30µ"]	4-1734320-3
			0.381µm [15µ"]	5-1734320-2
			0.152µm [6µ"]	5-1734320-1
POSITION 2		POSITION 1	MIN. GOLD THICKNESS	PART NUMBER
INDICATOR COLOR				

THIS DRAWING IS A CONTROLLED DOCUMENT.		DWN	TE Connectivity NAME MODULAR JACK CONNECTOR RJ45, SINGLE PORT, SIDE ENTRY, DIP TYPE														
DIMENSIONS: mm		CHK															
TOLERANCES UNLESS OTHERWISE SPECIFIED:		APVD															
<table border="1"> <tr><td>0 PLC</td><td>± -</td></tr> <tr><td>1 PLC</td><td>± 0.3</td></tr> <tr><td>2 PLC</td><td>± 0.2</td></tr> <tr><td>3 PLC</td><td>± 0.15</td></tr> <tr><td>4 PLC</td><td>± -</td></tr> <tr><td>ANGLES</td><td>± 3°</td></tr> </table>		0 PLC				± -	1 PLC	± 0.3	2 PLC	± 0.2	3 PLC	± 0.15	4 PLC	± -	ANGLES	± 3°	PRODUCT SPEC
0 PLC	± -																
1 PLC	± 0.3																
2 PLC	± 0.2																
3 PLC	± 0.15																
4 PLC	± -																
ANGLES	± 3°																
MATERIAL		APPLICATION SPEC															
FINISH		WEIGHT	SIZE	CAGE CODE	DRAWING NO	RESTRICTED TO											
		CUSTOMER DRAWING	A3	00779	C=1734320												
			SCALE	SHEET	REV												
				5 OF 6	B4												

4

3

2

1

THIS DRAWING IS UNPUBLISHED.

RELEASED FOR PUBLICATION

© COPYRIGHT 2011 BY TYCO ELECTRONICS CORPORATION. ALL RIGHTS RESERVED.

LOC

DIST

REVISIONS

DW

P

LTR

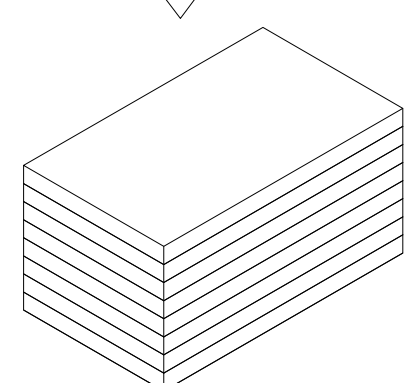
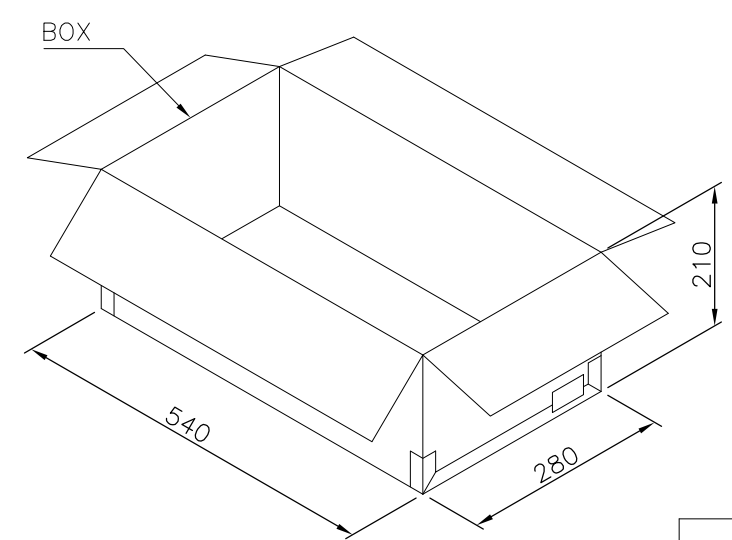
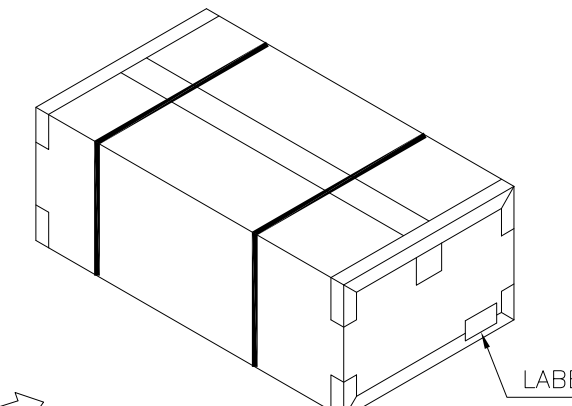
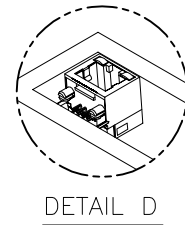
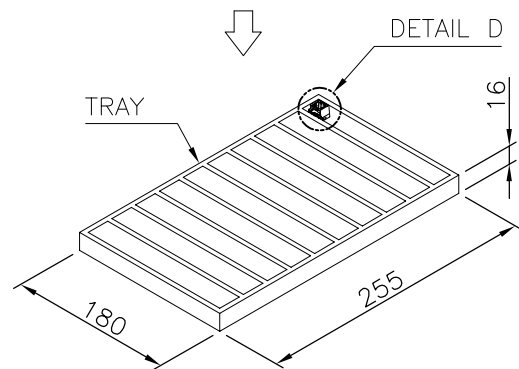
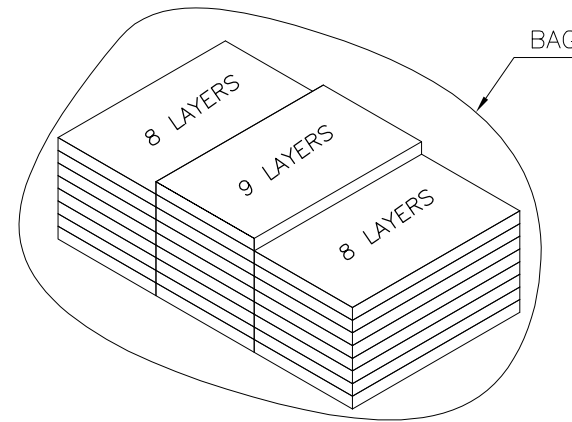
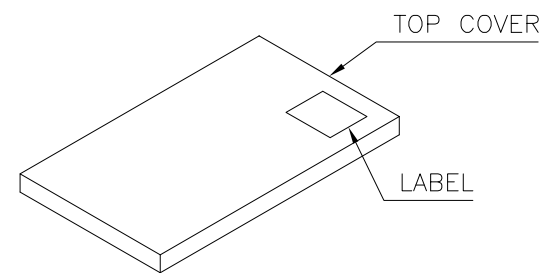
DESCRIPTION

DATE

DWN

APVD

SEE SHEET 1.

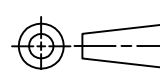


13 Kg	11 Kg	90	25	2250 PCS	3-1734320-X
14.4 Kg	12.4 Kg	100	25	2500 PCS	5-1734320-X 4-1734320-X 2-1734320-X 1-1734320-X 1734320-X
GROSS WEIGHT (Ref.)	NET WEIGHT (Ref.)	PCS/TRAY	TRAYS /BOX	QUANTITY	PART NUMBER

THIS DRAWING IS A CONTROLLED DOCUMENT.

DIMENSIONS:

mm



TOLERANCES UNLESS OTHERWISE SPECIFIED:

- 0 PLC ± -
- 1 PLC ± 0.3
- 2 PLC ± 0.2
- 3 PLC ± 0.15
- 4 PLC ± -
- ANGLES ± 3'

MATERIAL

FINISH

DWN

CHK

APVD

PRODUCT SPEC

APPLICATION SPEC

WEIGHT

CUSTOMER DRAWING



NAME

MODULAR JACK CONNECTOR
RJ45, SINGLE PORT, SIDE ENTRY, DIP TYPE

SIZE

CAGE CODE

DRAWING NO

RESTRICTED TO

A3 00779 C-1734320

SCALE

SHEET

6 OF 6

REV

B4



Компания «ЭлектроПласт» предлагает заключение долгосрочных отношений при поставках импортных электронных компонентов на взаимовыгодных условиях!

Наши преимущества:

- Оперативные поставки широкого спектра электронных компонентов отечественного и импортного производства напрямую от производителей и с крупнейших мировых складов;
- Поставка более 17-ти миллионов наименований электронных компонентов;
- Поставка сложных, дефицитных, либо снятых с производства позиций;
- Оперативные сроки поставки под заказ (от 5 рабочих дней);
- Экспресс доставка в любую точку России;
- Техническая поддержка проекта, помощь в подборе аналогов, поставка прототипов;
- Система менеджмента качества сертифицирована по Международному стандарту ISO 9001;
- Лицензия ФСБ на осуществление работ с использованием сведений, составляющих государственную тайну;
- Поставка специализированных компонентов (Xilinx, Altera, Analog Devices, Intersil, Interpoint, Microsemi, Aeroflex, Peregrine, Syfer, Eurofarad, Texas Instrument, Miteq, Cobham, E2V, MA-COM, Hittite, Mini-Circuits, General Dynamics и др.);

Помимо этого, одним из направлений компании «ЭлектроПласт» является направление «Источники питания». Мы предлагаем Вам помощь Конструкторского отдела:

- Подбор оптимального решения, техническое обоснование при выборе компонента;
- Подбор аналогов;
- Консультации по применению компонента;
- Поставка образцов и прототипов;
- Техническая поддержка проекта;
- Защита от снятия компонента с производства.



Как с нами связаться

Телефон: 8 (812) 309 58 32 (многоканальный)

Факс: 8 (812) 320-02-42

Электронная почта: org@eplast1.ru

Адрес: 198099, г. Санкт-Петербург, ул. Калинина, дом 2, корпус 4, литера А.