

Circuits from the Lab™ Reference Circuits

Circuits from the Lab™ reference circuits are engineered and tested for quick and easy system integration to help solve today's analog, mixed-signal, and RF design challenges. For more information and/or support, visit www.analog.com/CN0235.

Devices Connected/Referenced

AD7280A	Lithium Ion Battery Monitoring System
AD8280	Lithium Ion Battery Safety Monitor
ADuM5404	Quad-Channel Isolators with Integrated DC-to-DC Converter
ADuM1400	Quad-Channel Digital Isolators

Fully Isolated Lithium Ion Battery Monitoring and Protection System

EVALUATION AND DESIGN SUPPORT

Circuit Evaluation Boards

[CN-0235 Circuit Evaluation Board \(EVAL-CN0235-SDPZ\)](#)

[System Demonstration Platform \(EVAL-SDP-CB1Z\)](#)

Design and Integration Files

[Schematics, Layout Files, Bill of Materials](#)

CIRCUIT FUNCTION AND BENEFITS

Lithium ion (Li-Ion) battery stacks contain a large number of individual cells that must be monitored correctly in order to enhance the battery efficiency, prolong the battery life, and ensure safety.

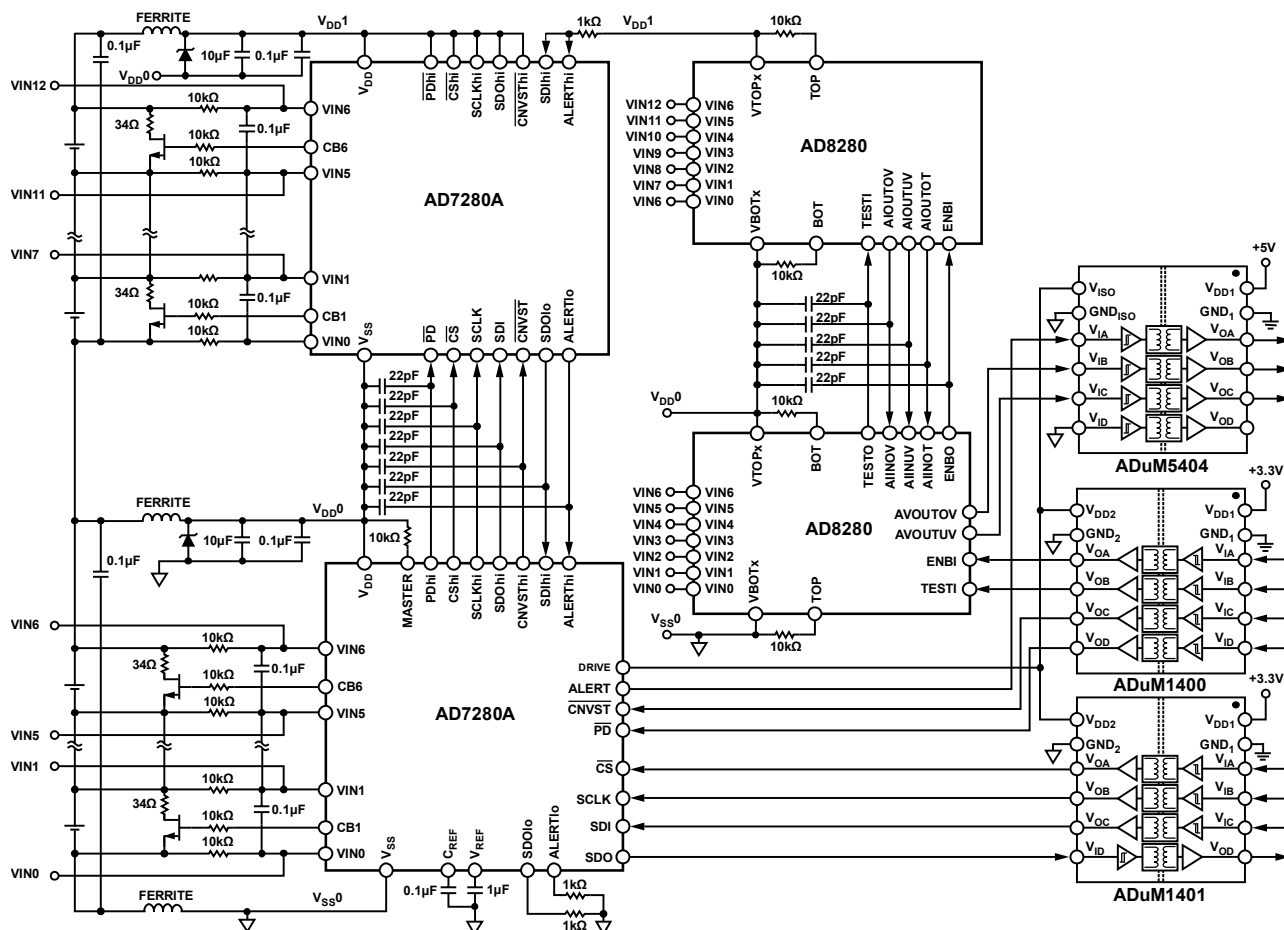


Figure 1. Lithium Ion Battery Monitoring and Protection System Simplified Schematic

Rev.0

Circuits from the Lab™ circuits from Analog Devices have been designed and built by Analog Devices engineers. Standard engineering practices have been employed in the design and construction of each circuit, and their function and performance have been tested and verified in a lab environment at room temperature. However, you are solely responsible for testing the circuit and determining its suitability and applicability for your use and application. Accordingly, in no event shall Analog Devices be liable for direct, indirect, special, incidental, consequential or punitive damages due to any cause whatsoever connected to the use of any Circuits from the Lab circuits. (Continued on last page)

The 6-channel [AD7280A](#) devices in the circuit shown in Figure 1 act as the primary monitor providing accurate voltage measurement data to the System Demonstration Platform (SDP-B) evaluation board, and the 6-channel [AD8280](#) devices act as the secondary monitor and protection system. Both devices can operate from a single wide supply range of 8 V to 30 V and operate over the industrial temperature range of -40°C to $+105^{\circ}\text{C}$.

The [AD7280A](#) contains an internal ± 3 ppm reference that allows a cell voltage measurement accuracy of ± 1.6 mV. The ADC resolution is 12 bits and allows conversion of up to 48 cells within 7 μs .

The [AD7280A](#) has cell balancing interface outputs designed to control external FET transistors to allow discharging of individual cells and forcing all the cells in the stack to have identical voltages.

The [AD8280](#) functions independently of the primary monitor and provides alarm functions indicating out of tolerance conditions. It contains its own reference and LDO, both of which are powered completely from the battery cell stack. The reference, in conjunction with external resistor dividers, is used to establish trip points for the over/undervoltages. Each cell channel contains programmable deglitching (D/G) circuitry to avoid alarming from transient input levels.

The [AD7280A](#) and [AD8280](#), which reside on the high voltage side of the battery management system (BMS) have a daisy-chain interface, which allows up to eight [AD7280A](#)'s and eight [AD8280](#)'s to be stacked together and allows for 48 Li-Ion cell voltages to be monitored. Adjacent [AD7280A](#)'s and [AD8280](#)'s in the stack can communicate directly, passing data up and down the stack without the need for isolation.

The master devices on the bottom of the stack use the SPI interface and GPIOs to communicate with the SDP-B evaluation board, and it is only at this point that high voltage galvanic isolation is required to protect the low voltage side of the SDP-B board. The [ADuM1400](#), [ADuM1401](#) digital isolator, and the [ADuM5404](#) isolator with integrated dc-to-dc converter combine to provide the required eleven channels of isolation in a compact and cost effective solution. The [ADuM5404](#) also provides isolated 5 V to the VDRIVE input of the lower [AD7280A](#) and the VDD2 supply voltage for the [ADuM1400](#) and [ADuM1401](#) isolators.

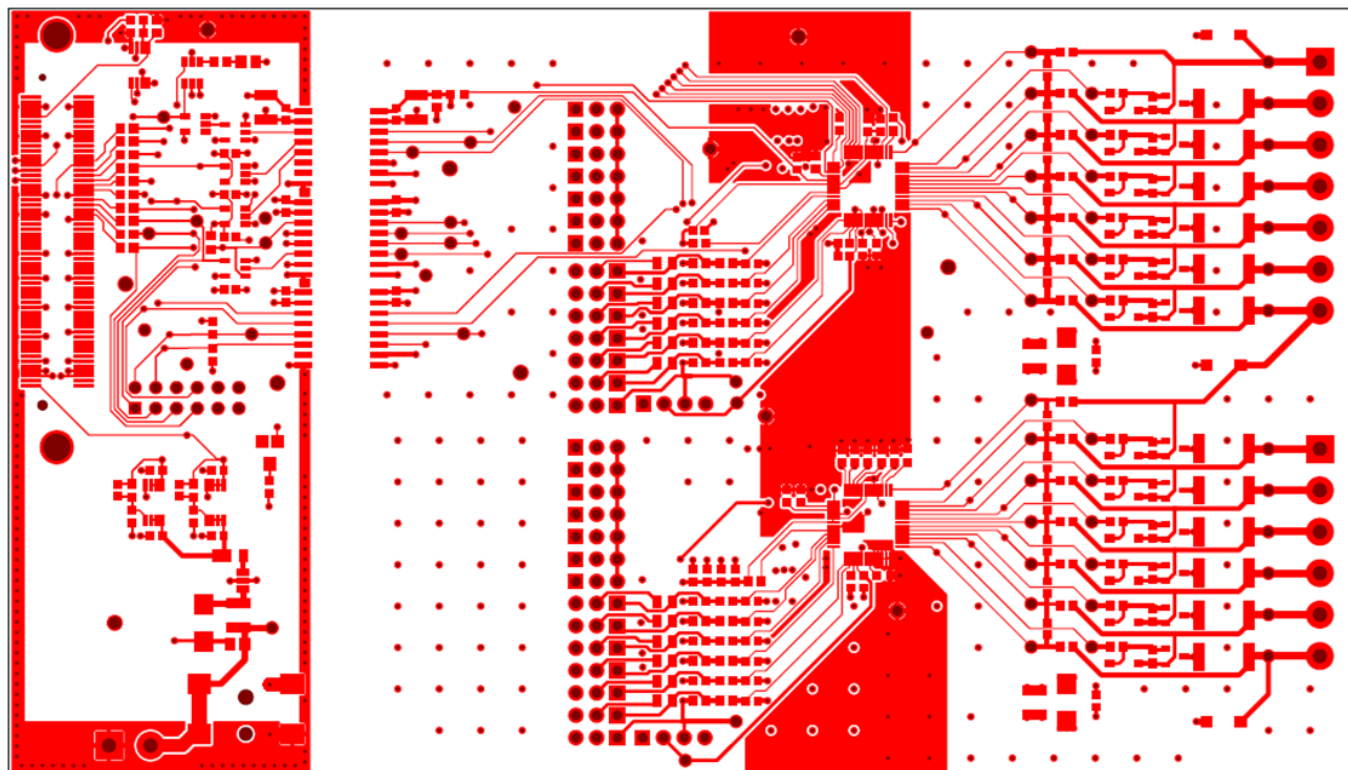
CIRCUIT DESCRIPTION

The [AD7280A](#) is a complete data acquisition system that includes a high voltage input multiplexer, a low voltage input multiplexer, a 12-bit, 1 μs SAR ADC, and on-chip registers for channel sequencing. The HV MUX is used to measure the series connected Li-Ion battery cells as shown in Figure 1. The LV MUX provides single-ended ADC inputs that can be used with external thermistors to measure the temperature of each battery cell; or, if temperature measurements are not required, the auxiliary ADC inputs can be used to convert any other 0 V to 5 V input signal. A precision 2.5 V reference and an on-chip voltage regulator is also included.

The [AD8280](#) is a hardwire-only safety monitor for lithium ion battery stacks. In conjunction with the [AD7280A](#), the [AD8280](#) provides a low cost, redundant, battery backup monitor with adjustable threshold detection and shared or separate alarm outputs. It has a self-test feature, making it suitable for high reliability applications, such as automotive hybrid electric vehicles or higher voltage industrial usage, such as uninterruptible power supplies. Both the [AD7280A](#) and the [AD8280](#) obtain power from the battery cells they monitor.

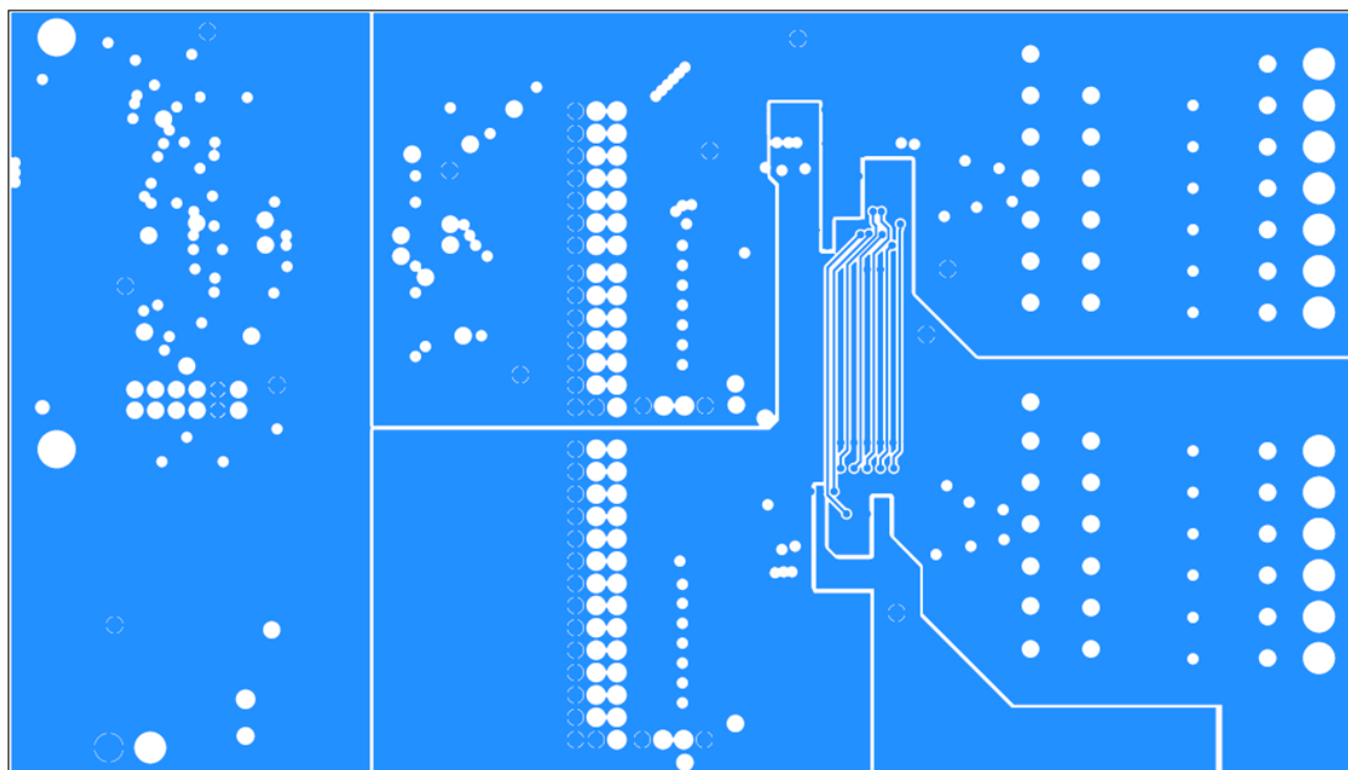
The [ADuM5404](#) includes an integrated dc-to-dc converter, which is used to power the high voltage side of the [ADuM1400](#) and [ADuM1401](#) isolators and provide the VDRIVE supply to the [AD7280A](#) SPI interface. These 4-channel, magnetically isolated circuits are a safe, reliable, and easy-to-use alternative to optocouplers.

To optimize the performance of the daisy-chain communication under noisy conditions, for example, when experiencing electromagnetic interference, the daisy-chain signals are shielded on an inner layer of the printed circuit board (PCB). Shielding is provided above and below by a VSS supply plane, which is connected to the VSS pin of the upper device in the chain. Figure 2 shows the top layer of the [EVAL-CN0235-SDPZ](#) PCB, which contains the upper shielding for the [AD7280A](#), and Figure 5 shows the bottom layer, which contains the upper shielding for the [AD8280](#). Figure 3 shows the inner layer (layer 2), which contains the shielded daisy-chain signals, and the shielding below is carried out on Layer 3 as shown in Figure 4. Individual 22 pF capacitors are placed on each daisy-chain connection and are terminated to either the VSS pin of the upper device or the VDD pin of the lower device, depending on the direction in which data is flowing on the daisy chain. The PD, CS, SCLK, SDI, and CNVST daisy-chain connections pass data up the chain, and the 22 pF capacitors on these pins are terminated to the VSS of the upper device in the chain.



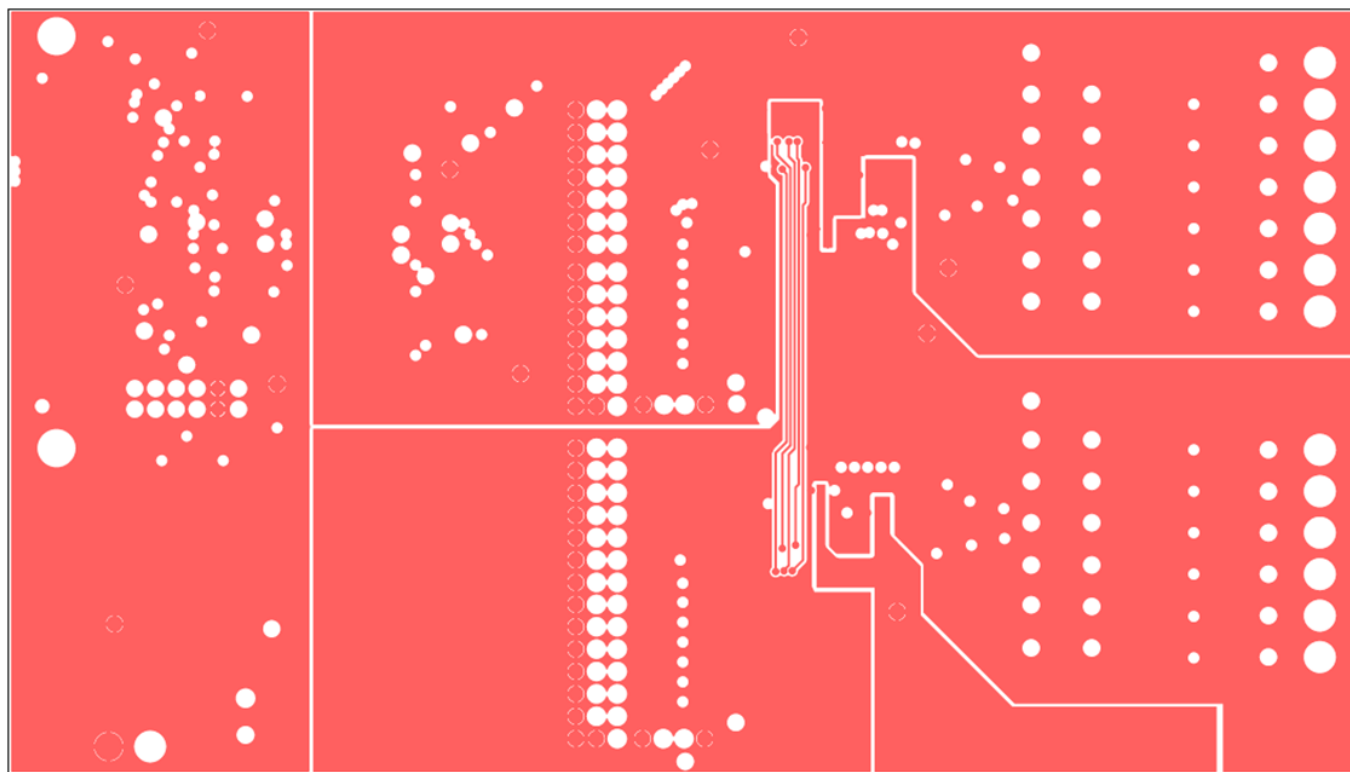
10135-002

Figure 2. Top Layer of the [EVAL-CN0235-SDPZ](#) PCB Contains the Upper Shielding for the Daisy-Chain Signals of the [AD7280A](#)



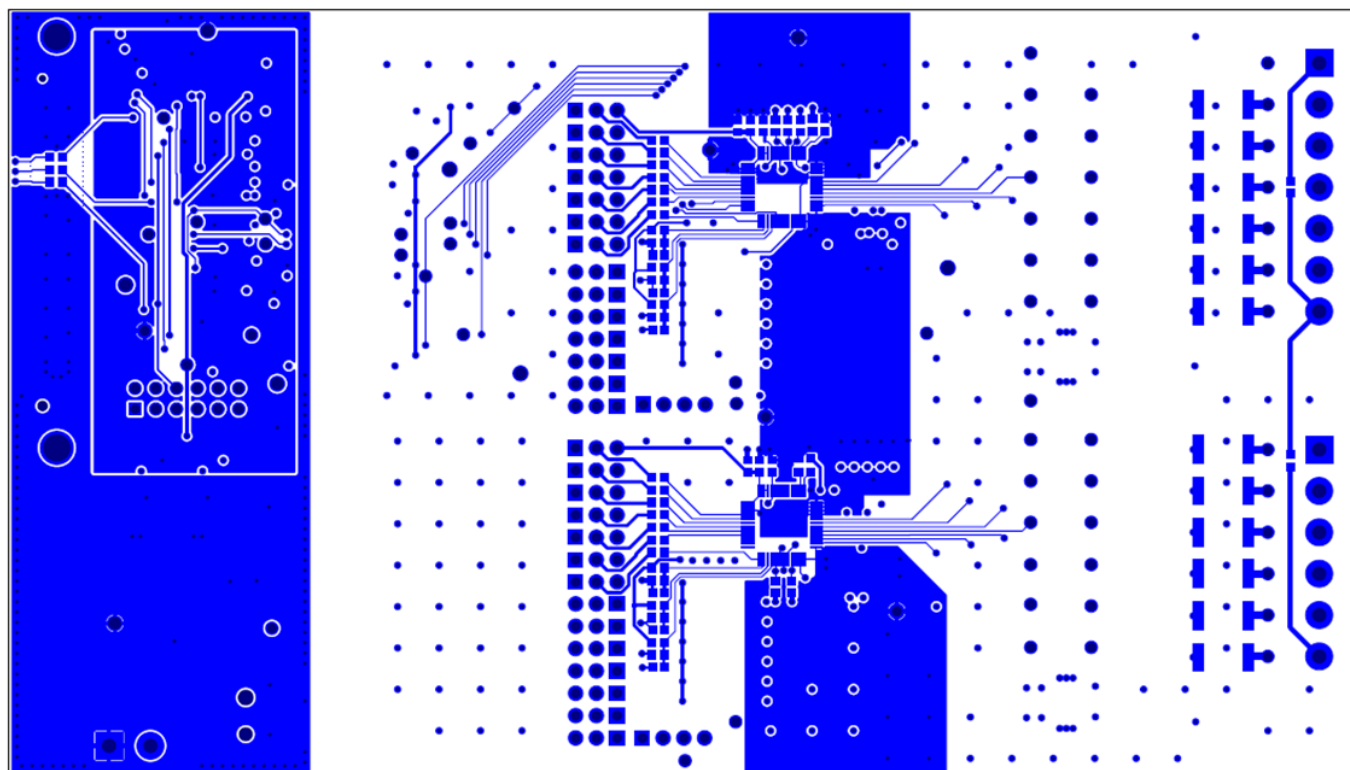
10135-003

Figure 3. Layer 2 of the [EVAL-CN0235-SDPZ](#) PCB Contains the Shielded [AD7280A](#) Daisy-Chain Signals



10135-004

Figure 4. Layer 3 of the *EVAL-CN0235-SDPZ* PCB Contains the Shielded *AD8280* Daisy-Chain Signals



10135-005

Figure 5. Bottom Layer of the *EVAL-CN0235-SDPZ* PCB Contains the Upper Shielding for the Daisy-Chain Signals of the *AD8280*

The SDO_{lo} and ALERT_{lo} daisy-chain connections pass data down the chain, and the 22 pF capacitors on these pins are terminated to the VDD of the lower device in the chain. A direct low impedance trace is used to connect the VDD of the lower device with the VSS of the upper device to hold the two potentials as close as possible together in a noisy environment.

A ground fence at the isolation barrier is used to enclose the low voltage side, which consists of the left hand side of the PCB. This fence consists of a guard ring laced together by vias and connects to the digital ground on all layers throughout the board. Noise on power and ground planes that reach the edge of the circuit board can radiate causing emissions, but with this shielded structure the noise is reflected back.

Input-to-output dipole radiation can also be generated when driving a current source across a gap between ground planes. To help minimize this, a continuous shield is used at the isolation gap whereby the ground planes are extended on all layers throughout the PCB to create a cross-barrier coupling using overlapping shields; and the isolation gap on each layer is kept to a minimum, with a gap of 0.008 inches used on the tested board. For further recommendations to control radiated emissions with isoPower® devices, such as the ADuM5404 used in this circuit, please refer to [Application Note AN-0971](#).

Test Results

An important measure of the performance of the circuit is the amount of noise in the final output voltage measurement.

Figure 6 shows a histogram of 10,000 measurement samples taken for the VIN3–VIN2 channel. This data was taken with the CN0235 Evaluation Board connected to the [EVAL-SDP-CB1Z](#) System Demonstration Platform (SDP-B) evaluation board. Details of the setup are described in the Circuit Evaluation and Test section of this circuit note.

Twelve Li-Ion batteries were connected to the input screw terminals. Note that there are only a small percentage of codes that fall outside the primary bin due to noise. Figure 6 and Figure 7 show 3 LSBs peak-to-peak noise, corresponding to approximately 0.5 LSBs rms.

A complete design support package for this circuit note can be found at www.analog.com/CN0235-DesignSupport.

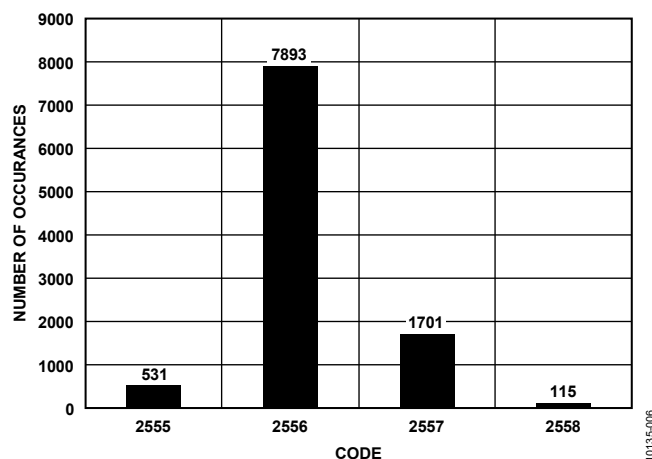


Figure 6. Histogram of Codes for 10,000 Samples, VIN4 – VIN3 of Device 0

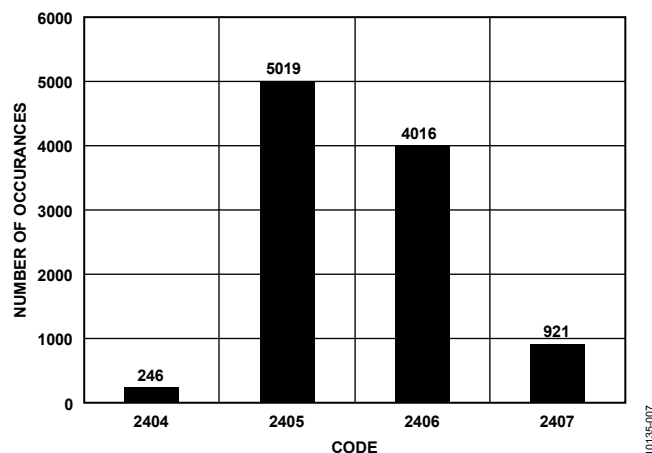


Figure 7. Histogram for 10,000 Samples, VIN4 - VIN3 of Device 1

COMMON VARIATIONS

The circuit is proven to work with good stability and accuracy. Other combinations of isolated channels can be used with the iCoupler isolation products.

CIRCUIT EVALUATION AND TEST

This circuit uses the [EVAL-CN0235-SDPZ](#) circuit board and the [EVAL-SDP-CB1Z](#) System Demonstration Platform (SDP-B) evaluation board. The two boards have 120-pin mating connectors, allowing for the quick setup and evaluation of the circuit's performance. The [EVAL-CN0235-SDPZ](#) board contains the circuit to be evaluated, as described in this note, and the SDP-B evaluation board is used with the CN0235 evaluation software to capture the data from the [EVAL-CN0235-SDPZ](#) circuit board.

Equipment Needed

- PC with a USB port and Windows® XP or Windows Vista® (32-bit), or Windows® 7 (32-bit)
- [EVAL-CN0235-SDPZ](#) circuit evaluation board
- [EVAL-SDP-CB1Z](#) SDP-B evaluation board
- CN0235 SDP evaluation software
- Power supply: +6 V, or +6 V “wall wart”
- Li-Ion batteries or precision dc supply

Getting Started

Load the evaluation software by placing the CN0235 Evaluation Software disc in the CD drive of the PC. Using “My Computer,” locate the drive that contains the evaluation software.

Functional Block Diagram

See Figure 1 of this circuit note for the circuit block diagram, and the file “EVAL-CN0235-SDPZ-SCH-RevA.pdf” for the circuit schematics. This file is contained in the [CN0235 Design Support Package](#).

Setup

Connect the 120-pin connector on the [EVAL-CN0235-SDPZ](#) circuit board to the connector marked “CON A” on the [EVAL-SDP-CB1Z](#) evaluation (SDP-B) board. Nylon hardware should be used to firmly secure the two boards, using the holes provided at the ends of the 120-pin connectors. With power to the supply off, connect a +6 V power supply to the pins marked “+6 V” and “GND” on the board. If available, a +6 V “wall wart” can be connected to the barrel connector on the board and used in place of the +6 V power supply. The only other connections required are to the lithium ion battery stack. The battery stack can be simulated with a resistor divider, which is driven by a precision dc supply voltage. Connect the USB cable supplied with the SDP-B board to the USB port on the PC. Note: Do not connect the USB cable to the mini USB connector on the SDP-B board at this time.

Test

Apply power to the +6 V supply (or “wall wart”) connected to [EVAL-CN0235-SDPZ](#) circuit board. Launch the evaluation software and connect the USB cable from the PC to the USB mini-connector on the SDP-B board.

Once USB communications are established, the SDP-B board can be used to send, receive, and capture serial data from the [EVAL-CN0235-SDPZ](#) board.

Information regarding the SDP-B board can be found in the [SDP-B User Guide](#).

LEARN MORE

CN0235 Design Support Package:

www.analog.com/CN0235-DesignSupport

SDP-B User Guide: www.analog.com/SDP

Arduzzoni, John. *A Practical Guide to High-Speed Printed-Circuit-Board Layout*, Analog Dialogue 39-09, September 2005.

MT-031 Tutorial, *Grounding Data Converters and Solving the Mystery of “AGND” and “DGND”*, Analog Devices.

MT-101 Tutorial, *Decoupling Techniques*, Analog Devices.

Data Sheets and Evaluation Boards

CN-0235 Circuit Evaluation Board ([EVAL-CN0235-SDPZ](#))

System Demonstration Platform ([EVAL-SDP-CB1Z](#))

[AD7280A Data Sheet and Evaluation Board](#)

[AD8280 Data Sheet and Evaluation Board](#)

[ADuM5404 Data Sheet](#)

[ADuM1400 Data Sheet](#)

REVISION HISTORY

1/12—Revision 0: Initial Version

(Continued from first page) Circuits from the Lab circuits are intended only for use with Analog Devices products and are the intellectual property of Analog Devices or its licensors. While you may use the Circuits from the Lab circuits in the design of your product, no other license is granted by implication or otherwise under any patents or other intellectual property by application or use of the Circuits from the Lab circuits. Information furnished by Analog Devices is believed to be accurate and reliable. However, “Circuits from the Lab” are supplied “as is” and without warranties of any kind, express, implied, or statutory including, but not limited to, any implied warranty of merchantability, noninfringement or fitness for a particular purpose and no responsibility is assumed by Analog Devices for their use, nor for any infringements of patents or other rights of third parties that may result from their use. Analog Devices reserves the right to change any Circuits from the Lab circuits at any time without notice but is under no obligation to do so.



Компания «ЭлектроПласт» предлагает заключение долгосрочных отношений при поставках импортных электронных компонентов на взаимовыгодных условиях!

Наши преимущества:

- Оперативные поставки широкого спектра электронных компонентов отечественного и импортного производства напрямую от производителей и с крупнейших мировых складов;
- Поставка более 17-ти миллионов наименований электронных компонентов;
- Поставка сложных, дефицитных, либо снятых с производства позиций;
- Оперативные сроки поставки под заказ (от 5 рабочих дней);
- Экспресс доставка в любую точку России;
- Техническая поддержка проекта, помощь в подборе аналогов, поставка прототипов;
- Система менеджмента качества сертифицирована по Международному стандарту ISO 9001;
- Лицензия ФСБ на осуществление работ с использованием сведений, составляющих государственную тайну;
- Поставка специализированных компонентов (Xilinx, Altera, Analog Devices, Intersil, Interpoint, Microsemi, Aeroflex, Peregrine, Syfer, Eurofarad, Texas Instrument, Miteq, Cobham, E2V, MA-COM, Hittite, Mini-Circuits, General Dynamics и др.);

Помимо этого, одним из направлений компании «ЭлектроПласт» является направление «Источники питания». Мы предлагаем Вам помощь Конструкторского отдела:

- Подбор оптимального решения, техническое обоснование при выборе компонента;
- Подбор аналогов;
- Консультации по применению компонента;
- Поставка образцов и прототипов;
- Техническая поддержка проекта;
- Защита от снятия компонента с производства.



Как с нами связаться

Телефон: 8 (812) 309 58 32 (многоканальный)

Факс: 8 (812) 320-02-42

Электронная почта: org@eplast1.ru

Адрес: 198099, г. Санкт-Петербург, ул. Калинина, дом 2, корпус 4, литера А.