



*Quality Products. Service Excellence.*

## Diecast Aluminum Enclosures *1550 Series*

Standard & Water-Tight Options

### Features



- Rugged, diecast aluminum alloy (tough yet easy to machine), electronic instrument enclosure.
- Available in natural vibra finish OR in light textured, black powder paint.
- Unpainted version is vibra finished for a smooth surface with no sharp edges.
- Painted version is painted with tough satin black polyester powder paint for a lasting finish, even after machining. Black screws are included to enhance the assembled appearance.
- Lap joint construction protection against access of dust and splashing water. Also provides for improved EMI/RFI shielding. When water-tight gaskets are installed,
- Four M3.5 x 0.6 x 12 mm long stainless steel, Philips head, machine screws secure lid - into factory tapped holes.
- Designed to meet IP 54 without a gasket or IP66 with a gasket. IP67 upgraded gaskets are available.
- No internal ribs for easy installation of connectors without interference or additional milling.
- Low side wall draft angle (2 degrees or less) for easy P.C. board mounting.
- Add 0.16" (4 mm) to enclosure depth for lid

### Replacement Hardware

- Replacement screws for the unpainted series - **1550MS100** - Package of 100
- Replacement screws for the black series - **1550MS100BK** - Package of 100

### Upgrade To Tamper-Resistant (Torx With Pin) Hardware

- Tamper-resistant screws for the unpainted series - **1550MS50T**- Package of 50
- Tamper-resistant screws for the black series -**1550MS50TBK** - Package of 50
- Driver bit for tamper-proof screws - **SCDRIVET15-B**

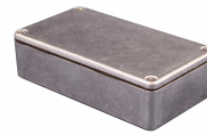
### Accessory Gasket Kits

- **IP66**
  - Each kit includes two pre-formed economical EVA foam gaskets.
  - Gaskets include adhesive backing for easy installation.
  - Allows enclosure to be machined and/or painted first and gasketed later
  - Gasket is applied to the lid (see photo example below).
  - Designed to meet IP 66 (with properly installed gasket and lid screws torqued at 55 cN.m).
- **IP67 Upgrade**
  - Each kit includes two pre-formed silicone gaskets.
  - Gaskets include adhesive backing for easy installation.
  - Allows enclosure to be machined and/or painted first and gasketed later.
  - Gasket is applied to the lid (see photo example below).
  - Tested to meet IP 67 (with properly installed gasket and lid screws torqued at 55 cN.m).

**Photo Features (click to enlarge):**

Available in natural (plain aluminum) finish or with black powder coat.

All sizes available with or without water-tight gaskets. Gasket shipped loose inside enclosure (shown installed).



Smooth internal walls make installing connectors easy.

Shown here with gasket installed.

Gasket retainer on the lid makes for accurate, steady positioning of critical seals.

IP66 or IP67 gasket kits with adhesive back also sold separately.

| Without Gasket Included |          | Includes IP66 Gasket |          |        |       |                               | Replacement & Upgrade       |              |
|-------------------------|----------|----------------------|----------|--------|-------|-------------------------------|-----------------------------|--------------|
| Part No.                | Part No. | Part No.             | Part No. | Length | Width | Enclosure Depth<br>(Less Lid) | Gasket Kits (Sold As Pairs) |              |
| Unpainted               | Black    | Unpainted            | Black    |        |       |                               | IP66                        | IP67         |
| 1550Q                   | 1550QBK  | 1550WQ               | 1550WQBK | 2.36   | 2.17  | 1.02                          | 1550QEGASKET                | 1550QSGASKET |
| 1550P                   | 1550PBK  | 1550WP               | 1550WPBK | 3.15   | 2.17  | 0.83                          | 1550PEGASKET                | 1550PSGASKET |
| 1550A                   | 1550ABK  | 1550WA               | 1550WABK | 3.50   | 1.38  | 1.02                          | 1550AEGASKET                | 1550ASGASKET |
| 1550B                   | 1550BBK  | 1550WB               | 1550WBBK | 4.51   | 2.52  | 1.02                          | 1550BEGASKET                | 1550BSGASKET |
| 1550D                   | 1550DBK  | 1550WD               | 1550WDBK | 4.51   | 2.52  | 2.01                          | 1550BEGASKET                | 1550BSGASKET |
| 1550C                   | 1550CBK  | 1550WC               | 1550WCBK | 4.53   | 3.54  | 2.01                          | 1550CEGASKET                | 1550CSGASKET |
| 1550M                   | 1550MBK  | 1550WM               | 1550WMBK | 4.74   | 3.95  | 1.23                          | 1550MEGASKET                | 1550MSGASKET |
| 1550K                   | 1550KBK  | 1550WK               | 1550WKBK | 5.51   | 4.02  | 2.85                          | 1550KEGASKET                | 1550KSGASKET |
| 1550L                   | 1550LBK  | 1550WL               | 1550WLBK | 6.51   | 5.02  | 2.85                          | 1550LEGASKET                | 1550LSGASKET |
| 1550E                   | 1550EBK  | 1550WE               | 1550WEBK | 6.73   | 4.76  | 2.01                          | 1550EEGASKET                | 1550ESGASKET |
| 1550F                   | 1550FBK  | 1550WF               | 1550WFBK | 6.73   | 4.76  | 3.98                          | 1550EEGASKET                | 1550ESGASKET |
| 1550G                   | 1550GBK  | 1550WG               | 1550WGBK | 8.74   | 5.75  | 2.01                          | 1550GEGASKET                | 1550GSGASKET |
| 1550H                   | 1550HBK  | 1550WH               | 1550WHBK | 8.74   | 5.75  | 3.98                          | 1550GEGASKET                | 1550GSGASKET |
| 1550N                   | 1550NBK  | 1550WN               | 1550WNBK | 9.85   | 9.85  | 3.82                          | 1550NEGASKET                | 1550NSGASKET |
| 1550J                   | 1550JBK  | 1550WJ               | 1550WJBK | 10.83  | 6.89  | 2.46                          | 1550JEGASKET                | 1550JSGASKET |

Notes: Add 0.16" (4 mm) to enclosure depth for lid. Available in natural vibra finish OR in light textured, black powder paint

© 2020. Hammond Manufacturing Ltd. All rights reserved.



Компания «ЭлектроПласт» предлагает заключение долгосрочных отношений при поставках импортных электронных компонентов на взаимовыгодных условиях!

Наши преимущества:

- Оперативные поставки широкого спектра электронных компонентов отечественного и импортного производства напрямую от производителей и с крупнейших мировых складов;
- Поставка более 17-ти миллионов наименований электронных компонентов;
- Поставка сложных, дефицитных, либо снятых с производства позиций;
- Оперативные сроки поставки под заказ (от 5 рабочих дней);
- Экспресс доставка в любую точку России;
- Техническая поддержка проекта, помощь в подборе аналогов, поставка прототипов;
- Система менеджмента качества сертифицирована по Международному стандарту ISO 9001;
- Лицензия ФСБ на осуществление работ с использованием сведений, составляющих государственную тайну;
- Поставка специализированных компонентов (Xilinx, Altera, Analog Devices, Intersil, Interpoint, Microsemi, Aeroflex, Peregrine, Syfer, Eurofarad, Texas Instrument, Miteq, Cobham, E2V, MA-COM, Hittite, Mini-Circuits, General Dynamics и др.);

Помимо этого, одним из направлений компании «ЭлектроПласт» является направление «Источники питания». Мы предлагаем Вам помощь Конструкторского отдела:

- Подбор оптимального решения, техническое обоснование при выборе компонента;
- Подбор аналогов;
- Консультации по применению компонента;
- Поставка образцов и прототипов;
- Техническая поддержка проекта;
- Защита от снятия компонента с производства.



#### Как с нами связаться

**Телефон:** 8 (812) 309 58 32 (многоканальный)

**Факс:** 8 (812) 320-02-42

**Электронная почта:** [org@eplast1.ru](mailto:org@eplast1.ru)

**Адрес:** 198099, г. Санкт-Петербург, ул. Калинина, дом 2, корпус 4, литера А.