

FLORENTINA-2X2-MRK-M

~40° medium beam. Compatible with ultra high power LEDs.

TECHNICAL SPECIFICATIONS:

| | |
|----------------|------------|
| Dimensions | 89.7 mm |
| Height | 17.7 mm |
| Fastening | pin, screw |
| ROHS compliant | yes ⓘ |

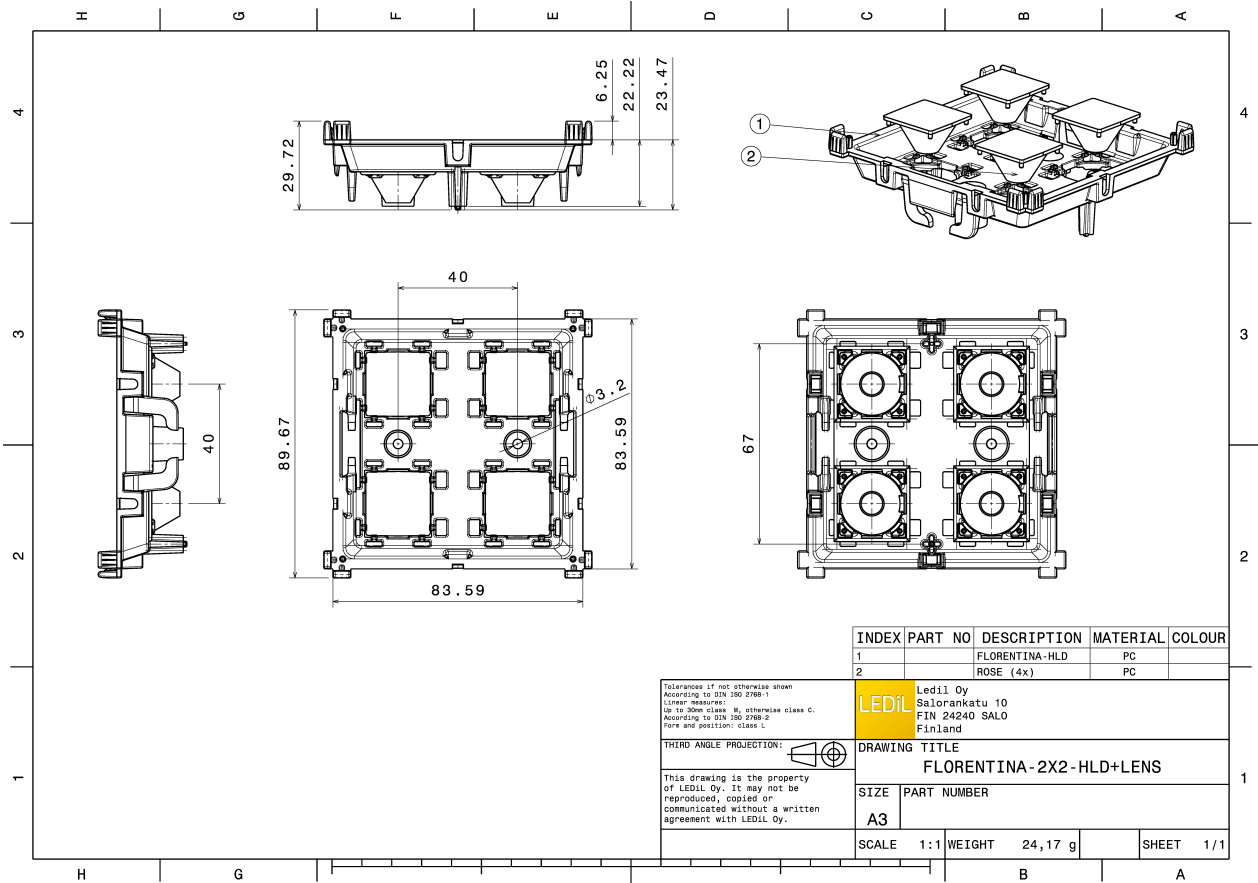
MATERIAL SPECIFICATIONS:

| Component | Type | Material | Colour | Finish |
|--------------------|-------------|----------|--------|--------|
| ROSE-MRK-M | Single lens | PC | clear | |
| FLORENTINA-2X2-HLD | Holder | PC | black | |



ORDERING INFORMATION:

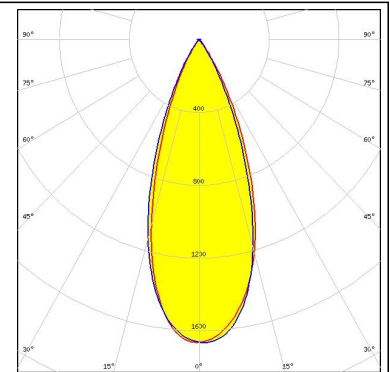
| Component | | Qty in box | MOQ | MPQ | Box weight (kg) |
|--------------------------------|-------------|------------|-----|-----|-----------------|
| FCP15705_FLORENTINA-2X2-MRK-M | Single lens | 88 | 24 | 8 | 4.2 |
| » Box size: 476 x 273 x 292 mm | | | | | |



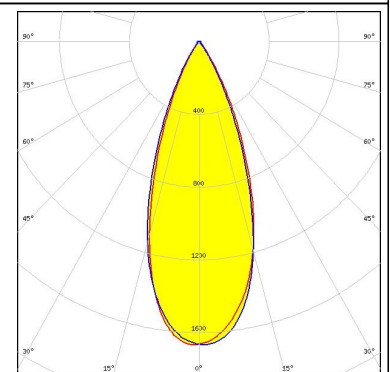
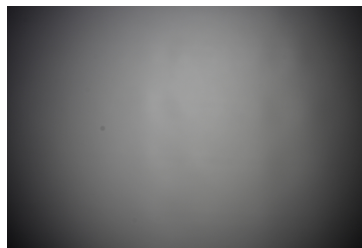
PHOTOMETRIC DATA (MEASURED):



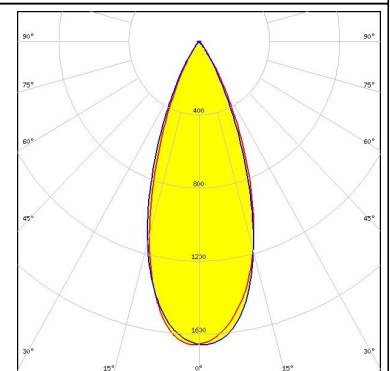
LED XHP35 HD
 FWHM 39.0°
 Efficiency 79 %
 Peak intensity 1.7 cd/lm
 LEDs/each optic 1
 Light colour White
 Required components:
 C14734_FLORENTINA-2X2-SHD



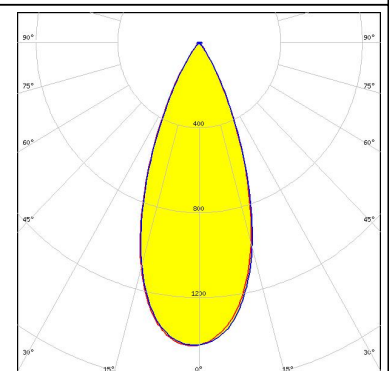
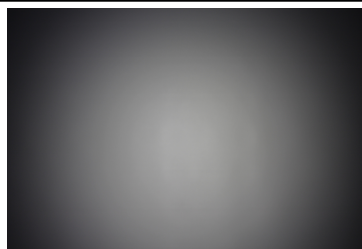
LED XHP35 HD
 FWHM 39.0°
 Efficiency 82 %
 Peak intensity 1.7 cd/lm
 LEDs/each optic 1
 Light colour White
 Required components:
 C14960_FLORENTINA-2X2-SHD-WHT



LED XHP35 HD
 FWHM 39.0°
 Efficiency 79 %
 Peak intensity 1.7 cd/lm
 LEDs/each optic 1
 Light colour White
 Required components:
 C15196_FLORENTINA-2X2-SHD-OPEN



LED XHP50
 FWHM 41.0°
 Efficiency 76 %
 Peak intensity 1.4 cd/lm
 LEDs/each optic 1
 Light colour White
 Required components:
 C14734_FLORENTINA-2X2-SHD

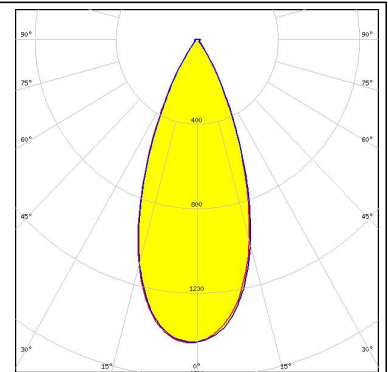


PHOTOMETRIC DATA (MEASURED):

CREE 

LED XHP50
FWHM 41.0°
Efficiency 80 %
Peak intensity 1.4 cd/lm
LEDs/each optic 1
Light colour White

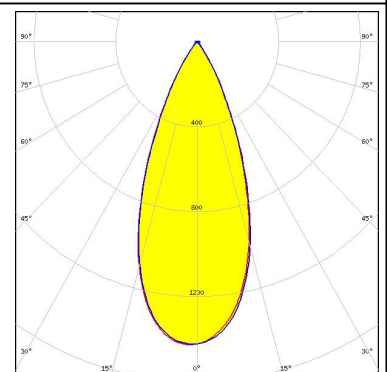
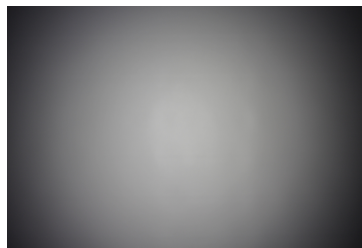
Required components:
C14960_FLORENTINA-2X2-SHD-WHT



CREE 

LED XHP50
FWHM 41.0°
Efficiency 76 %
Peak intensity 1.4 cd/lm
LEDs/each optic 1
Light colour White

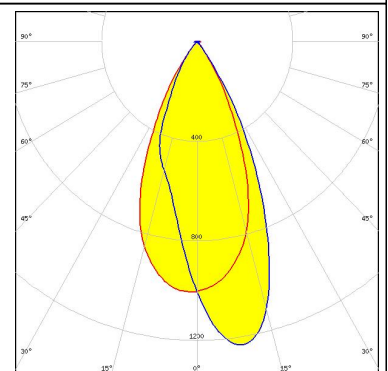
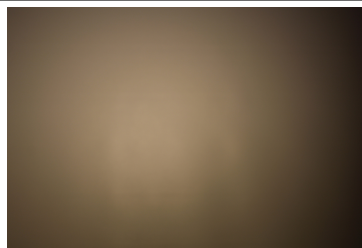
Required components:
C15196_FLORENTINA-2X2-SHD-OPEN



CREE 

LED XHP70
FWHM 48.0°
Efficiency 69 %
Peak intensity 1.2 cd/lm
LEDs/each optic 1
Light colour White

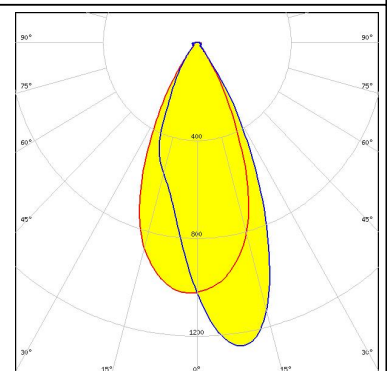
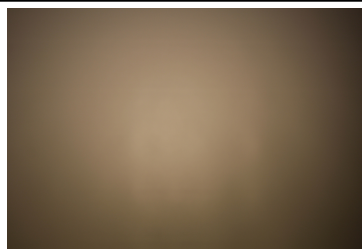
Required components:
C14734_FLORENTINA-2X2-SHD



CREE 

LED XHP70
FWHM 48.0°
Efficiency 77 %
Peak intensity 1.3 cd/lm
LEDs/each optic 1
Light colour White

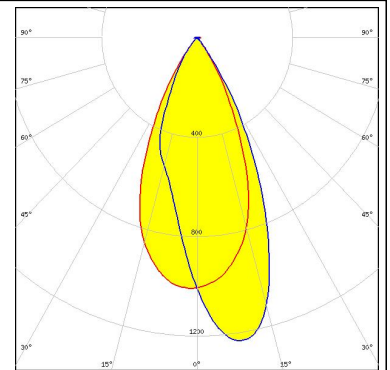
Required components:
C14960_FLORENTINA-2X2-SHD-WHT



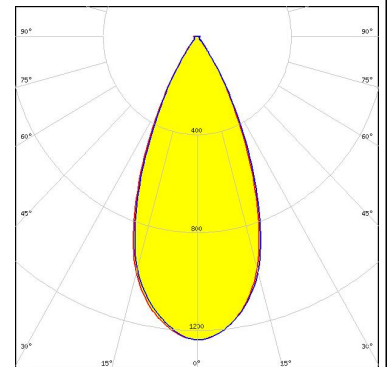
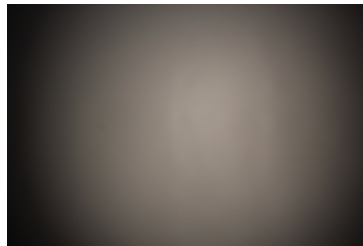
PHOTOMETRIC DATA (MEASURED):



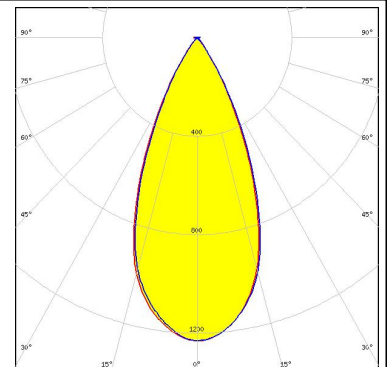
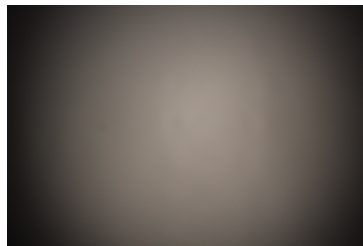
LED XHP70
FWHM 48.0°
Efficiency 70 %
Peak intensity 1.2 cd/lm
LEDs/each optic 1
Light colour White
Required components:
 C15196_FLORENTINA-2X2-SHD-OPEN



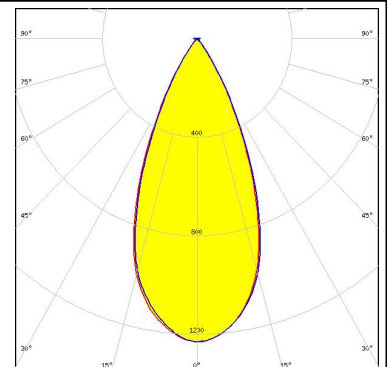
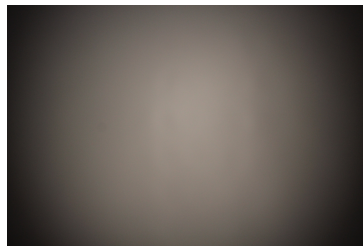
LED H70E0
FWHM 46.0°
Efficiency 80 %
Peak intensity 1.2 cd/lm
LEDs/each optic 1
Light colour White
Required components:
 C14960_FLORENTINA-2X2-SHD-WHT



LED H70E0
FWHM 45.0°
Efficiency 76 %
Peak intensity 1.2 cd/lm
LEDs/each optic 1
Light colour White
Required components:
 C15196_FLORENTINA-2X2-SHD-OPEN



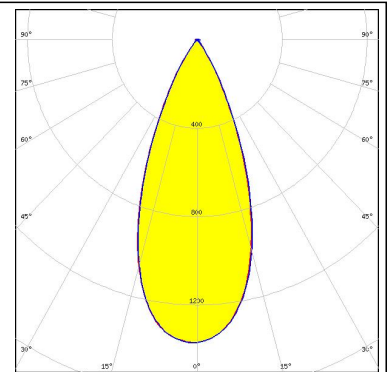
LED H70E0
FWHM 45.0°
Efficiency 75 %
Peak intensity 1.2 cd/lm
LEDs/each optic 1
Light colour White
Required components:
 C14734_FLORENTINA-2X2-SHD



PHOTOMETRIC DATA (MEASURED):

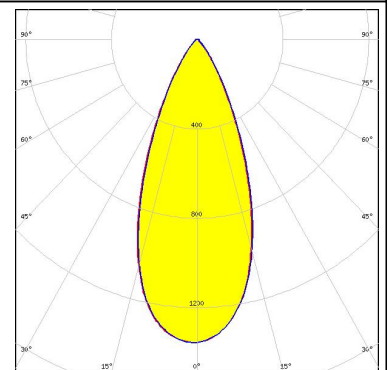
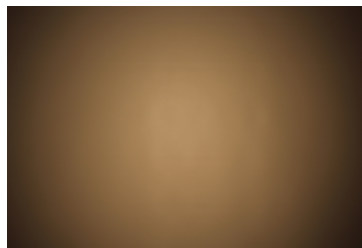
LUMILEDS

LED LUXEON M/MX
 FWHM 42.0°
 Efficiency 74 %
 Peak intensity 1.4 cd/lm
 LEDs/each optic 1
 Light colour White
 Required components:
 C14734_FLORENTINA-2X2-SHD



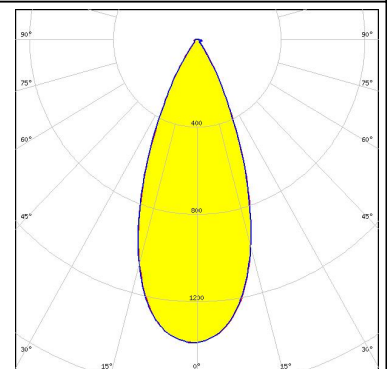
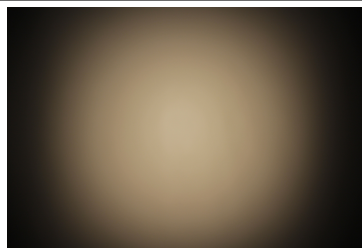
LUMILEDS

LED LUXEON M/MX
 FWHM 43.0°
 Efficiency 82 %
 Peak intensity 1.4 cd/lm
 LEDs/each optic 1
 Light colour White
 Required components:



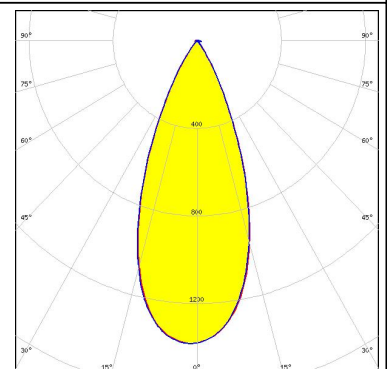
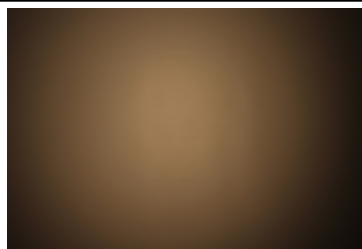
LUMILEDS

LED LUXEON M/MX
 FWHM 42.0°
 Efficiency 79 %
 Peak intensity 1.4 cd/lm
 LEDs/each optic 1
 Light colour White
 Required components:
 C14960_FLORENTINA-2X2-SHD-WHT



LUMILEDS

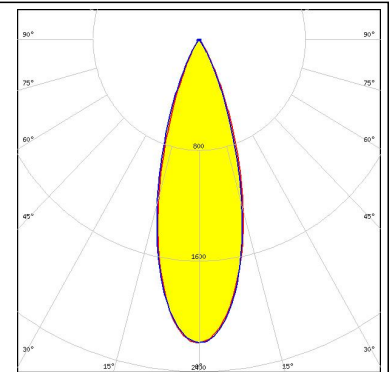
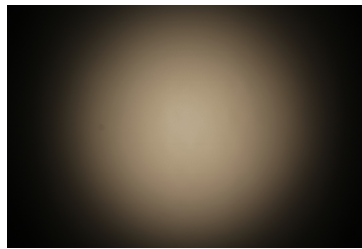
LED LUXEON M/MX
 FWHM 41.0°
 Efficiency 74 %
 Peak intensity 1.4 cd/lm
 LEDs/each optic 1
 Light colour White
 Required components:
 C15196_FLORENTINA-2X2-SHD-OPEN



PHOTOMETRIC DATA (MEASURED):

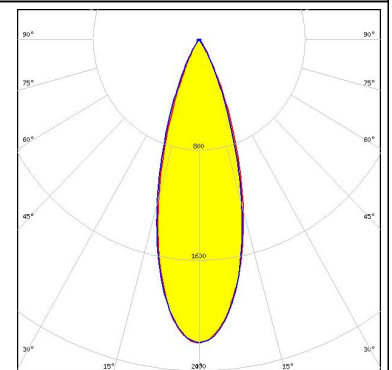
LUMILEDS

LED LUXEON MZ
 FWHM 33.0°
 Efficiency 77 %
 Peak intensity 2.2 cd/lm
 LEDs/each optic 1
 Light colour White
 Required components:
 C15196_FLORENTINA-2X2-SHD-OPEN



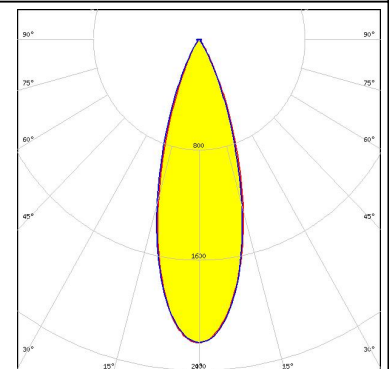
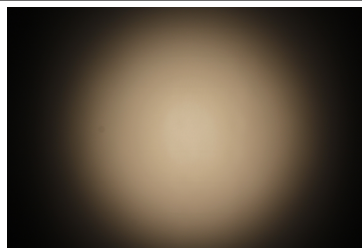
LUMILEDS

LED LUXEON MZ
 FWHM 33.0°
 Efficiency 78 %
 Peak intensity 2.2 cd/lm
 LEDs/each optic 1
 Light colour White
 Required components:
 C14734_FLORENTINA-2X2-SHD



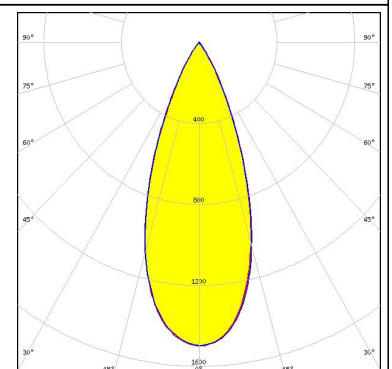
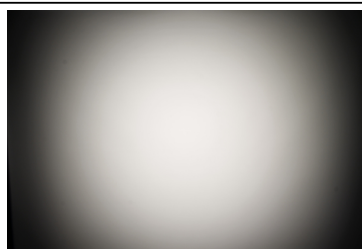
LUMILEDS

LED LUXEON MZ
 FWHM 33.0°
 Efficiency 81 %
 Peak intensity 2.2 cd/lm
 LEDs/each optic 1
 Light colour White
 Required components:
 C14960_FLORENTINA-2X2-SHD-WHT



OSRAM

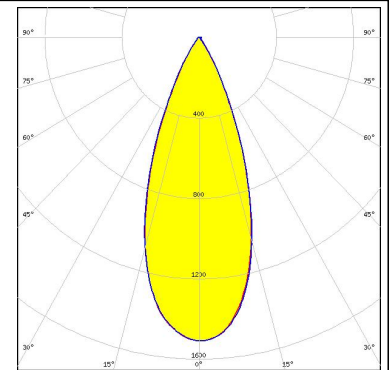
Opto Semiconductors
 LED OSCONIQ P 7070
 FWHM 40.0°
 Efficiency 70 %
 Peak intensity 1.5 cd/lm
 LEDs/each optic 1
 Light colour White
 Required components:
 C14734_FLORENTINA-2X2-SHD



PHOTOMETRIC DATA (MEASURED):

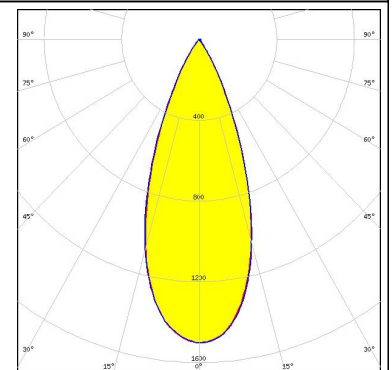
OSRAM Opto Semiconductors

LED OSCONIQ P 7070
FWHM 40.0°
Efficiency 75 %
Peak intensity 1.5 cd/lm
LEDs/each optic 1
Light colour White
Required components:
C14960_FLORENTINA-2X2-SHD-WHT



OSRAM Opto Semiconductors

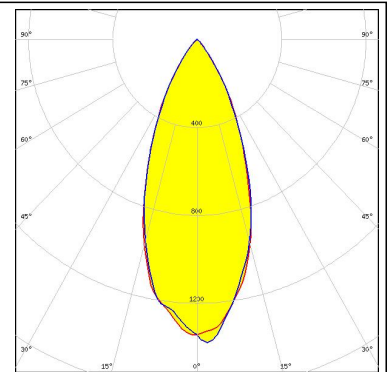
LED OSCONIQ P 7070
FWHM 40.0°
Efficiency 71 %
Peak intensity 1.5 cd/lm
LEDs/each optic 1
Light colour White
Required components:
C15196_FLORENTINA-2X2-SHD-OPEN



PHOTOMETRIC DATA (SIMULATED):

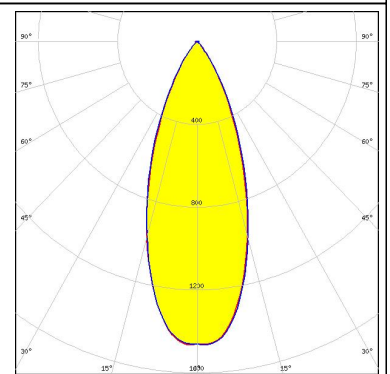


LED NV4x144A
FWHM 42.0°
Efficiency 76 %
Peak intensity 1.4 cd/lm
LEDs/each optic 1
Light colour White
Required components:
C14734_FLORENTINA-2X2-SHD



Opto Semiconductors

LED Duris S8
FWHM 39.0°
Efficiency 76 %
Peak intensity 1.5 cd/lm
LEDs/each optic 1
Light colour White
Required components:
C14734_FLORENTINA-2X2-SHD



GENERAL INFORMATION:

NOTE: The typical beam angle will be changed by different color, chip size and chip position tolerance. The typical total beam angle is the full angle measured where the luminous intensity is half of the peak value.

MATERIALS:

As part of our continuous research and improvement processes, and to ensure the best possible quality and availability of our products, LEDiL reserves the right to change material grades without notice.

PRODUCT DATA USER AGREEMENT AND DISCLAIMER:

The measured data in the provided downloadable LEDiL Product Datasheets and Mechanical 2D-Drawings is rounded and provided as reference for planning. LEDiL Oy's optical specifications have been verified by conducting performance testing of the products in accordance with the company's quality system. The reported data are averaged results of multiple measurements with typical variation. LEDiL Oy reserves the right to without prior notification make changes and improvements to its products.

LEDiL Oy assumes neither warranty, nor guarantee nor any other liability of any kind for the contents and correctness of the provided data. The provided data has been generated with highest diligence but the provided data may in reality not represent the complete possible variation range of all intrinsic parameters. Therefore, in certain cases a deviation from the provided data could occur.

LEDiL Oy reserves the right to undertake technical changes of its products without further notification which could lead to changes in the provided data. LEDiL Oy assumes no liability of any kind for the possible deviation from any provided data or any other damage resulting from the usage of the provided data.

The user agrees to this disclaimer and user agreement with the download or usage of the provided files.

LEDiL Oy

Joensuunkatu 13
FI-24240 SALO
Finland

LEDiL Inc.

228 West Page Street
Suite D
Sycamore IL 60178
USA

Local sales and technical support

[www.ledil.com/
where_to_buy](http://www.ledil.com/where_to_buy)

Shipping locations

Salo, Finland
Hong Kong, China

Distribution Partners

[www.ledil.com/
where_to_buy](http://www.ledil.com/where_to_buy)



Компания «ЭлектроПласт» предлагает заключение долгосрочных отношений при поставках импортных электронных компонентов на взаимовыгодных условиях!

Наши преимущества:

- Оперативные поставки широкого спектра электронных компонентов отечественного и импортного производства напрямую от производителей и с крупнейших мировых складов;
- Поставка более 17-ти миллионов наименований электронных компонентов;
- Поставка сложных, дефицитных, либо снятых с производства позиций;
- Оперативные сроки поставки под заказ (от 5 рабочих дней);
- Экспресс доставка в любую точку России;
- Техническая поддержка проекта, помощь в подборе аналогов, поставка прототипов;
- Система менеджмента качества сертифицирована по Международному стандарту ISO 9001;
- Лицензия ФСБ на осуществление работ с использованием сведений, составляющих государственную тайну;
- Поставка специализированных компонентов (Xilinx, Altera, Analog Devices, Intersil, Interpoint, Microsemi, Aeroflex, Peregrine, Syfer, Eurofarad, Texas Instrument, Miteq, Cobham, E2V, MA-COM, Hittite, Mini-Circuits, General Dynamics и др.);

Помимо этого, одним из направлений компании «ЭлектроПласт» является направление «Источники питания». Мы предлагаем Вам помощь Конструкторского отдела:

- Подбор оптимального решения, техническое обоснование при выборе компонента;
- Подбор аналогов;
- Консультации по применению компонента;
- Поставка образцов и прототипов;
- Техническая поддержка проекта;
- Защита от снятия компонента с производства.



Как с нами связаться

Телефон: 8 (812) 309 58 32 (многоканальный)

Факс: 8 (812) 320-02-42

Электронная почта: org@eplast1.ru

Адрес: 198099, г. Санкт-Петербург, ул. Калинина, дом 2, корпус 4, литера А.