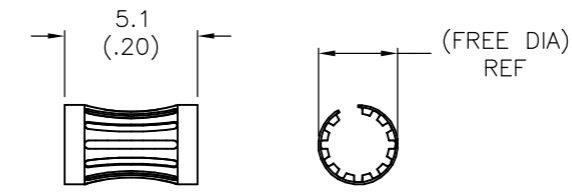
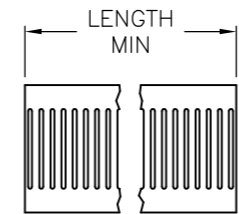


THIS DRAWING IS UNPUBLISHED. RELEASED FOR PUBLICATION
 © COPYRIGHT - By - ALL RIGHTS RESERVED.

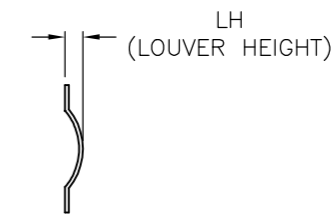
REVISIONS				
P	LTR	DESCRIPTION	DATE	APVD
U		REVISED PER ECO-15-012365	17NOV2015	NK MZ
V		REVISED PER ECO-17-013721	16NOV2017	RS MZ
W		REVISED PER ECO-18-007230	10MAY2018	RS MZ



STYLE A
(FEMALE)



STYLE C
(STRIP)



STYLE	(FREE DIA)	LH	LENGTH	MAT'L (NOTE)	MATING PIN Ø REF	PLATING NOTE NO.	NUM LOUV	MAT'L THK	REF	PART NO.			
A	[.83]	[.022]	-- 12	19 [.750]	3-2	82	0.12 [.005]	05043	5-192046-0	OBSOLETE			
A	[.83]	[.022]	-- 12	19 [.750]	UNPL	82	0.12 [.005]	05115	4-192046-9	OBSOLETE	16		
A	[.76]	[.022]	-- 12	16.8 [.660]	UNPL	75	0.12 [.005]	05141	4-192046-8	OBSOLETE	16		
A	[.73]	[.016]	-- 13	15.9 [.625]	3-2	71	0.12 [.005]	05175	4-192046-7	OBSOLETE	16		
A	[.73]	[.018]	-- 12	15.9 [.625]	4-2	71	0.12 [.005]	05174	4-192046-6	OBSOLETE			
A	[.73]	[.022]	-- 12	15.3 [.602]	3-2	67	0.12 [.005]	05049	4-192046-5	OBSOLETE	16		
A	[.73]	[.022]	-- 12	15.2 [.600]	UNPL	67	0.12 [.005]	05065	4-192046-4	OBSOLETE	16		
A	[.73]	[.018]	-- 12	14.8 [.584]	3-2	65	0.15 [.006]	05022	4-192046-3	OBSOLETE	16		
A	[.70]	[.018]	-- 12	13 [.514]	UNPL	58	0.12 [.005]	05102	4-192046-2	OBSOLETE	16		
A	[.57]	--	-- 12	12.7 [.500]	1-2	57	0.20 [.008]	05182	4-192046-1	OBSOLETE			
A	[.68]	[.016]	-- 13	12.7 [.500]	UNPL	57	0.12 [.005]	05176	4-192046-0	OBSOLETE	16		
A	[.68]	[.018]	-- 12	12.7 [.500]	1-2	57	0.12 [.005]	05143	3-192046-9	OBSOLETE			
									05184	3-192046-8	OBSOLETE	16	
A	[.68]	[.018]	-- 12	12.7 [.499]	4-2	56	0.15 [.006]	05144	3-192046-7	OBSOLETE	16		
A	[.64]	[.022]	-- 14	12.4 [.490]	1-2	56	0.12 [.005]	05135	3-192046-6	OBSOLETE	16		
A	[.64]	[.022]	-- 14	12.4 [.490]	UNPL	56	0.12 [.005]	05138	3-192046-5	OBSOLETE	16		
--	[.64]	[.022]	-- 14	12.4 [.490]	1-2	56	0.10 [.004]	05148	3-192046-4	OBSOLETE	16		
A	[.64]	[.022]	-- 14	12.4 [.490]	UNPL	56	0.10 [.004]	05151	3-192046-3	OBSOLETE	16		
--	[.55]	[.018]	-- 12	12.3 [.486]	UNPL	56	0.12 [.005]	05099	3-192046-2	OBSOLETE	16		
A	[.50]	[.022]	-- 13	11.6 [.458]	UNPL	51	0.12 [.005]	05145	3-192046-1				
A	[.44]	[.022]	-- 12	10.2 [.400]	3-2	44	0.12 [.005]	05029	3-192046-0	OBSOLETE			
A	[.44]	[.022]	-- 12	10.2 [.400]	UNPL	44	0.12 [.005]	05066	2-192046-9	OBSOLETE	16		
A	[.42]	[.018]	-- 12	9.5 [.375]	3-2	42	0.15 [.006]	05019	2-192046-8	OBSOLETE			
A	--	--	-- 12	9.5 [.375]	UNPL	42	0.15 [.006]	05032	2-192046-7	OBSOLETE	16		
A	[.42]	--	-- 13	9.5 [.375]	1-2	42	0.12 [.005]	05137	2-192046-6	OBSOLETE			
A	[.38]	--	-- 12	7.9 [.312]	6	36	0.15 [.006]	05133	2-192046-5	OBSOLETE			
A	[.38]	--	-- 12	7.9 [.312]	3-2	36	0.15 [.006]	05120	2-192046-4	OBSOLETE			
A	[.34]	--	-- 12	7.5 [.297]	3-2	34	0.15 [.006]	05122	2-192046-3	OBSOLETE			
									--	2-192046-2	OBSOLETE	16	
A	[.32]	[.018]	-- 12	6.9 [.270]	1-2	31	0.12 [.005]	05077	2-192046-1	OBSOLETE	16		
A	[.33]	[.018]	-- 12	6.3 [.250]	6	28	0.15 [.006]	05040	2-192046-0				
A	[.33]	[.018]	-- 12	6.3 [.250]	3-2	28	0.15 [.006]	05064	1-192046-9				
SUPERSEDED BY 9-192046-4										05054	1-192046-8	SUPERSEDED BY 9-192046-4	
A	[.33]	[.018]	-- 12	6.3 [.250]	UNPL	28	0.15 [.006]	05038	1-192046-7	OBSOLETE	16		
A	[.27]	[.018]	-- 12	5.7 [.225]	4-2	25	0.15 [.006]	05051	1-192046-6				
A	[.27]	[.018]	-- 12	5.7 [.225]	1-2	25	0.15 [.006]	05163	1-192046-5	OBSOLETE	16		
A	[.27]	[.018]	-- 12	5.7 [.225]	UNPL	25	0.15 [.006]	05046	1-192046-4	OBSOLETE	16		
A	[.34]	[.022]	-- 14	5.1 [.200]	3-2	24	0.12 [.005]	05157	1-192046-3	OBSOLETE	16		
A	[.34]	[.022]	-- 14	5.1 [.200]	UNPL	24	0.12 [.005]	05156	1-192046-2	OBSOLETE	16		
A	[.24]	[.018]	-- 12	5 [.197]	1-2	22	0.15 [.006]	05147	1-192046-1	OBSOLETE	16		
A	[.24]	[.018]	-- 12	5 [.197]	UNPL	22	0.15 [.006]	05146	1-192046-0	OBSOLETE	16		
A	[.23]	[.018]	-- 12	4.7 [.187]	3-2	21	0.15 [.006]	05050	192046-9	OBSOLETE	16		
A	[.23]	[.018]	-- 12	4.7 [.187]	1-2	21	0.15 [.006]	05103	192046-8	OBSOLETE	16		
A	[.23]	[.022]	-- 12	4.7 [.187]	3-2	21	0.12 [.005]	05016	192046-7	OBSOLETE			
A	[.22]	[.018]	-- 12	4.4 [.172]	3-2	20	0.15 [.006]	05015	192046-6				
A	[.22]	[.018]	-- 12	4.4 [.172]	1-2	20	0.15 [.006]	05162	192046-5	OBSOLETE	16		
A	[.22]	[.018]	-- 12	4.4 [.172]	UNPL	20	0.15 [.006]	05155	192046-4	OBSOLETE	16		
A	[.19]	[.018]	-- 12	4.1 [.160]	5-2	18	0.10 [.004]	05114	192046-3	OBSOLETE	16		
A	[.19]	[.018]	-- 12	4.1 [.160]	UNPL	18	0.10 [.004]	05113	192046-2	OBSOLETE	16		
A	[.19]	[.018]	-- 12	4 [.157]	4-2	18	0.15 [.006]	05134	192046-1	OBSOLETE	16		

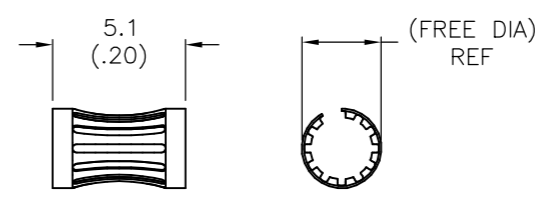
- FINISH: SILVER PLATE 200uIN THICK MIN.
- FINISH: NICKEL PLATE 40uIN THICK MIN.
- FINISH: GOLD PLATE 10uIN THICK MIN.
- FINISH: GOLD PLATE 50uIN THICK MIN.
- FINISH: GOLD PLATE 20uIN THICK MIN.
- FINISH: TIN PLATE 300uIN THICK MIN.
-
- FINISH: GOLD PLATE 30uIN THICK MIN.
-
-
- PLATING NOTES ARE TO BE INTERPRETED AS FOLLOWS 6-8 AS 6 OVER 8.
- MATERIAL: CDA17200, BeCu.
- MATERIAL: STAINLESS STEEL
- MATERIAL: CDA17410, BeCu.
- FINISH: HARD GOLD OVER NICKEL PLATE.
- 16 OBSOLETE PARTS: OBSOLETE CIS STREAMLINING PER D.RENAUD/D.SINISI

THIS DRAWING IS A CONTROLLED DOCUMENT.		DWN -	TE Connectivity	
DIMENSIONS: mm		CHK - J.TURNER	NAME	
TOLERANCES UNLESS OTHERWISE SPECIFIED:		APVD -	PRODUCT SPEC	
0 PLC ± -		APPLICATION SPEC		
1 PLC ± -		SIZE CAGE CODE DRAWING NO RESTRICTED TO		
2 PLC ± 0.5 [.02]		A2 00779 C-192046		
3 PLC ± 0.25 [.010]		CUSTOMER DRAWING SCALE 1:1 SHEET 1 OF 2 REV W		
4 PLC ± -				
ANGLES ± -				
FINISH				

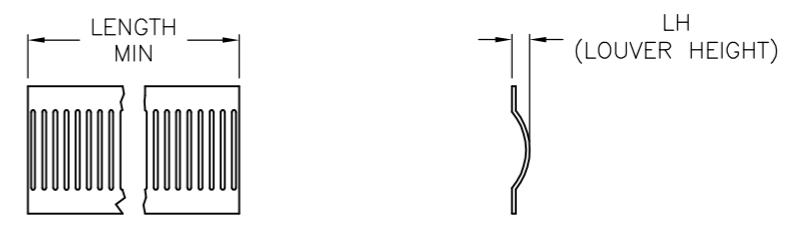
THIS DRAWING IS UNPUBLISHED. RELEASED FOR PUBLICATION
 © COPYRIGHT - By - ALL RIGHTS RESERVED.

REVISIONS				
P	LTR	DESCRIPTION	DATE	APVD
-	-	SEE SHEET 1	-	-

A	[.34]	[.022]	--	12	5.1[.200]	3-2	24	0.12[.005]	--	9-192046-9	OBSOLETE
A	[.19]	[.022]	--	12	3.4[.134]	UNPL	15	0.15[.006]	--	9-192046-8	OBSOLETE
A	[.19]	[.022]	--	12	3.4[.134]	8-2	16	0.15[.006]	--	9-192046-7	OBSOLETE
A	[.19]	[.022]	--	12	3.4[.134]	8-2	16	0.15[.006]	--	9-192046-6	
A	[.19]	[.022]	--	12	3.4[.134]	UNPL	15	0.15[.006]	--	9-192046-5	OBSOLETE
A	[.35]	[.018]	--	12	6[.236]	1-2	27	0.15[.006]	--	9-192046-4	OBSOLETE
A	[.45]	[.018]	--	12	9[.354]	1-2	40	0.15[.006]	--	9-192046-3	
A	[.19]	[.018]	--	12	3.17[.125]	1-2	15	0.15[.006]	--	9-192046-2	OBSOLETE
A	[.12]	[.018]	--	12	1.9[.075]	15	10	0.08[.003]	--	9-192046-1	OBSOLETE
A	[.12]	[.018]	--	12	1.9[.075]	UNPL	10	0.08[.003]	--	9-192046-0	OBSOLETE
A	[.32]	[.022]	--	12	5.7[.225]	UNPL	25	0.15[.006]	--	8-192046-9	
A	[.21]	[.022]	--	12	5.4[.211]	UNPL	19	0.12[.005]	--	8-192046-8	
A	[1.66]	[.022]	--	12	38.1[1.500]	UNPL	168	0.15[.006]	--	8-192046-7	
A	[1.10]	[.018]	--	12	23.7[.934]	UNPL	105	0.12[.005]	--	8-192046-6	
A	[.73]	[.016]	--	13	15.9[.625]	UNPL	71	0.12[.005]	--	8-192046-5	OBSOLETE
A	[.73]	[.018]	--	12	15.9[.625]	UNPL	71	0.12[.005]	--	8-192046-4	
A	[.73]	[.018]	--	12	14.8[.584]	UNPL	65	0.15[.006]	--	8-192046-3	
A	[.68]	[.018]	--	12	12.7[.500]	UNPL	57	0.12[.005]	--	8-192046-2	
A	[.68]	[.018]	--	12	12.7[.500]	UNPL	56	0.15[.006]	--	8-192046-1	OBSOLETE
--	--	--	--	--	--	--	--	--	--	8-192046-0	
A	[.32]	[.018]	--	12	6.9[.270]	UNPL	31	0.12[.005]	--	7-192046-9	
A	[.23]	[.018]	--	12	4.7[.187]	UNPL	21	0.15[.006]	--	7-192046-8	
A	[.19]	[.018]	--	12	4.5[.157]	UNPL	18	0.15[.006]	05189	7-192046-7	
--	--	--	--	--	--	--	--	--	--	7-192046-6	
A	[.45]	[.018]	--	12	9[.354]	1-2	40	0.20[.008]	--	7-192046-5	
A	[.45]	[.018]	--	12	9[.354]	UNPL	40	0.20[.008]	--	7-192046-4	
A	[.16]	[.018]	--	12	3[.118]	1-2	14	0.20[.008]	--	7-192046-3	
A	[.16]	[.018]	--	12	3[.118]	UNPL	14	0.20[.008]	--	7-192046-2	
SUPERSEDED BY 9-192046-3											
A	[.45]	[.018]	--	12	9[.354]	UNPL	40	0.15[.006]	--	7-192046-0	
A	[.16]	[.018]	--	12	3[.118]	1-2	14	0.15[.006]	--	6-192046-9	
A	[.16]	[.018]	--	12	3[.118]	UNPL	14	0.15[.006]	--	6-192046-8	
A	[.45]	[.018]	--	12	9[.354]	1-2	40	0.12[.005]	--	6-192046-7	
A	[.45]	[.018]	--	12	9[.354]	UNPL	40	0.12[.005]	--	6-192046-6	
A	[.16]	[.018]	--	12	3[.118]	1-2	14	0.12[.005]	--	6-192046-5	
A	[.16]	[.018]	--	12	3[.118]	UNPL	14	0.12[.005]	--	6-192046-4	
A	[.32]	[.022]	--	12	5.7[.225]	4-2	25	0.15[.006]	--	6-192046-3	OBSOLETE
A	[.21]	[.022]	--	12	5.4[.211]	1-2	19	0.12[.005]	--	6-192046-2	OBSOLETE
SUPERSEDED BY 6-192044-0											
A	[.18]	[.022]	--	12	3.4[.134]	UNPL	16	0.20[.008]	--	6-192046-0	OBSOLETE
A	[.19]	[.022]	--	12	3.4[.134]	4-2	16	0.15[.006]	--	5-192046-9	
A	[.19]	[.022]	--	12	3.4[.134]	UNPL	16	0.15[.006]	--	5-192046-8	OBSOLETE
A	--	[.022]	--	12	110.2[4.340]	1-2	--	0.12[.005]	05088	5-192046-7	OBSOLETE
A	--	[.022]	--	12	91.4[3.600]	3-2	--	0.15[.006]	05067	5-192046-6	OBSOLETE
A	[1.66]	[.022]	--	12	38.1[1.500]	3-2	168	0.15[.006]	05045	5-192046-5	OBSOLETE
A	[1.10]	[.018]	--	12	23.7[.934]	1-2	105	0.12[.005]	05078	5-192046-4	OBSOLETE
A	[1.10]	[.022]	--	12	22.7[.895]	UNPL	102	0.12[.005]	05082	5-192046-3	OBSOLETE
A	[1.20]	[.022]	--	12	20[.788]	UNPL	89	0.12[.005]	05129	5-192046-2	OBSOLETE
									05081	5-192046-1	OBSOLETE



STYLE A
(FEMALE)



STYLE C
(STRIP)

THIS DRAWING IS A CONTROLLED DOCUMENT.		DWN	TE Connectivity	
DIMENSIONS: mm		CHK	J.TURNER	
TOLERANCES UNLESS OTHERWISE SPECIFIED:		APVD	NAME	
0 PLC ± -		PRODUCT SPEC		
1 PLC ± -		APPLICATION SPEC		
2 PLC ± 0.5 [.02]		SIZE	CAGE CODE	DRAWING NO
3 PLC ± 0.25 [.010]		A2	00779	C-192046
4 PLC ± -		RESTRICTED TO		
ANGLES ± -		CUSTOMER DRAWING		
MATERIAL		WEIGHT	SCALE	SHEET
			1:1	2 of 2
		REV W		



Компания «ЭлектроПласт» предлагает заключение долгосрочных отношений при поставках импортных электронных компонентов на взаимовыгодных условиях!

Наши преимущества:

- Оперативные поставки широкого спектра электронных компонентов отечественного и импортного производства напрямую от производителей и с крупнейших мировых складов;
- Поставка более 17-ти миллионов наименований электронных компонентов;
- Поставка сложных, дефицитных, либо снятых с производства позиций;
- Оперативные сроки поставки под заказ (от 5 рабочих дней);
- Экспресс доставка в любую точку России;
- Техническая поддержка проекта, помощь в подборе аналогов, поставка прототипов;
- Система менеджмента качества сертифицирована по Международному стандарту ISO 9001;
- Лицензия ФСБ на осуществление работ с использованием сведений, составляющих государственную тайну;
- Поставка специализированных компонентов (Xilinx, Altera, Analog Devices, Intersil, Interpoint, Microsemi, Aeroflex, Peregrine, Syfer, Eurofarad, Texas Instrument, Miteq, Cobham, E2V, MA-COM, Hittite, Mini-Circuits, General Dynamics и др.);

Помимо этого, одним из направлений компании «ЭлектроПласт» является направление «Источники питания». Мы предлагаем Вам помощь Конструкторского отдела:

- Подбор оптимального решения, техническое обоснование при выборе компонента;
- Подбор аналогов;
- Консультации по применению компонента;
- Поставка образцов и прототипов;
- Техническая поддержка проекта;
- Защита от снятия компонента с производства.



Как с нами связаться

Телефон: 8 (812) 309 58 32 (многоканальный)

Факс: 8 (812) 320-02-42

Электронная почта: org@eplast1.ru

Адрес: 198099, г. Санкт-Петербург, ул. Калинина, дом 2, корпус 4, литера А.