

SNAP-IN BEZELS FOR DMS-20PC/30PC/40PC RED LED METERS

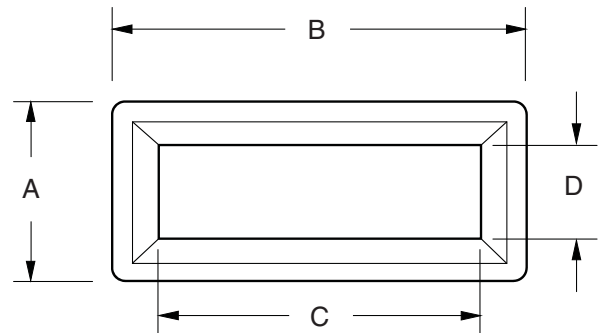
DATEL part numbers 5252-01160-0 (for DMS-30PC and DMS-40PC red LED meters) and 5252-01161-0 (for DMS-20PC red LED meters) can be used when DMS meters are mounted on a pc-board which is situated behind a panel. Both bezels are made of black ABS plastic and easily snap into appropriately-sized cutouts (see chart for cutout dimensions) in metal panels whose thickness is between 0.040"(1.0mm) and 0.125"(3.2mm).

Both bezels come with a snap-in, 0.030"(0.8mm) thick, red acrylic lens which provides excellent on/off contrast. For optimum digit clarity, the spacing between the meter's front surface and the lens should be less than 0.200"(5.1mm). See application Note 16 for more information on behind-the-panel mounting.

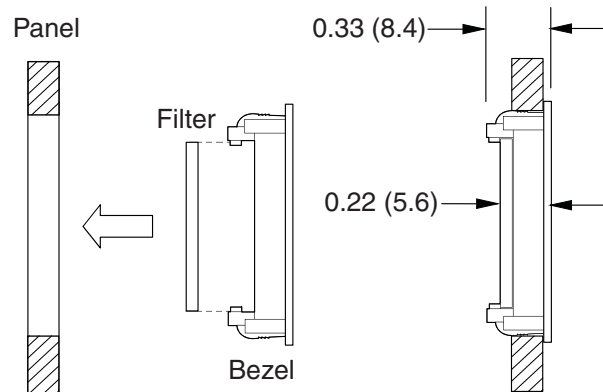


| Bezel Dimensions | A | B | C | D |
|-------------------------------|-----------------|-----------------|-----------------|-----------------|
| 5252-01161-0 DMS-20PC | 1.343 (34.1) | 1.906 (48.4) | 1.375 (34.9) | 0.812 (20.6) |
| 5252-01160-0 DMS-30PC/40PC | 1.343 (34.1) | 2.531 (64.3) | 2.0 (50.8) | 0.812 (20.6) |
| Cutout Dimensions | Height | | Width | |
| 5252-01161-0 DMS-20PC | 1.156 (29.4) | | 1.750 (44.5) | |
| 5252-01160-0 DMS-30PC/40PC | 1.156 (29.4) | | 2.375 (60.3) | |
| Filter Dimensions | Height | | Width | |
| 5252-01161-0 DMS-20PC | 0.875 (22.2) | | 1.437 (36.5) | |
| 252-01160-0 DMS-30PC/40PC | 0.875 (22.2) | | 2.087 (53.0) | |

Dimensions: in. (mm) Tolerances: ±0.008 (±0.2)
Filter Material is 0.030" (0.8) thick



BEZEL AND FILTER INSTALLATION



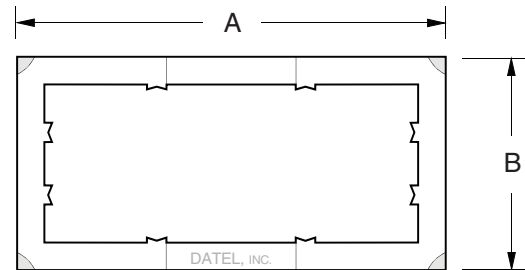
RETAINING CLIPS FOR DMS-20 AND DMS-30/40

Part numbers 5252-01126-0 (for all DMS-30/40 meters) and 5252-01127-0 (for all DMS-20 meters) metal retaining clips can be used as spares for damaged or lost clips and for securing blank cases to panels.

| Clip Dimensions | A | B |
|-------------------------------|----------------|----------------|
| 5252-01127-0 DMS-20PC | 1.71 (43.4) | 1.21 (30.7) |
| 5252-01126-0 DMS-30PC/40PC | 2.50 (63.5) | 1.25 (31.8) |

Dimensions: in. (mm)

Tolerances: ±0.02 (±0.5)



RED CASES FOR DMS-20PC/30PC/40PC APPLICATIONS

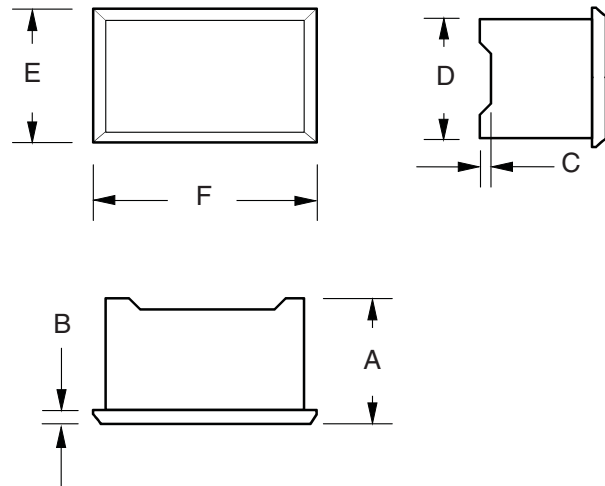
DATEL part numbers 5252-01145-0 (DMS-30/40PC size) and 5252-01130-0 (DMS-20PC size) are the same red plastic cases used in DMS-30/40 and DMS-20PC red LED display meters. These "blank" cases can be utilized to cover unused cutouts in multiple-meter applications. They can also be used to achieve a uniform appearance in applications which combine a red LED DMS meter with a user-supplied red LED display. Both cases can be secured to the panel in the same manner as their meter counterparts, that is, with either 5252-01120-0 (for DMS-30/40's) and 5252-01127-0 (for DMS-20's) retaining clips, or with DMS-BZL1 (for DMS-30/40's) and DMS-BZL3 (for DMS-20's) bezel assemblies.

Both cases are made from 0.040" (1.0mm) thick red polycarbonate plastic and are supplied with a removable protective film on their front surface which reduces scratching during handling and installation.

| Case Dimensions | A | B | C | D | E | F |
|-------------------------------|-----------------|----------------|----------------|-----------------|-----------------|-----------------|
| 5252-01130-0 DMS-20PC | 0.475 (12.1) | 0.040 (1.0) | 0.025 (0.6) | 0.800 (20.3) | 0.880 (22.4) | 1.380 (35.1) |
| 5252-01145-0 DMS-30PC/40PC | 0.560 (14.1) | 0.040 (1.0) | 0.030 (0.8) | 0.850 (21.6) | 0.925 (23.5) | 2.165 (55.0) |

Dimensions: in. (mm)

Tolerances: ±0.008 (±0.2)



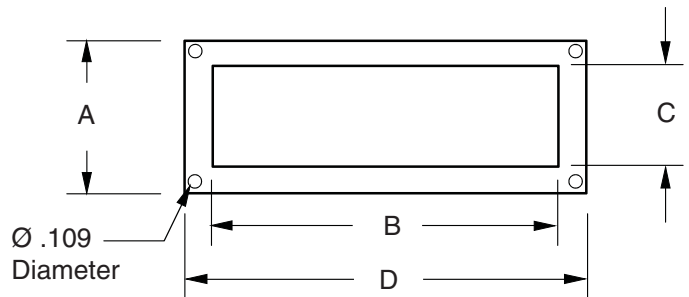
Panel Cutouts: See the Mechanical Specifications section of the DMS-20PC or DMS-30PC Series product data sheets for detailed panel cutout and panel mounting dimensions.

CUTOUT ADAPTER FOR DMS-20/30/40 METERS

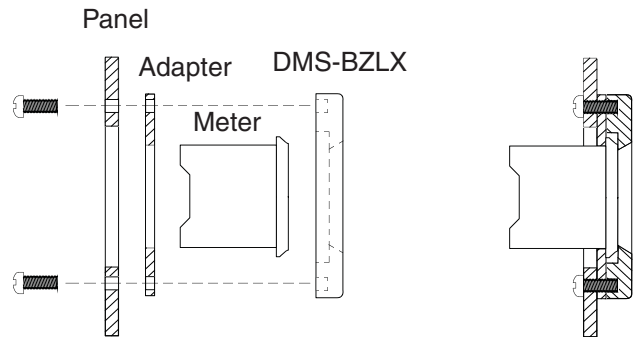
DATEL offers two 0.020"(0.5mm) lexan adapter plates which, when used with DMS-BZL1 or DMS-BZL3 bezel assemblies, can compensate for irregular, less precise panel cutouts. These adapter plates can also be used to compensate for slightly larger cutouts when designing-in DATEL meters as alternate sources. 4652-01101-0 fits all DMS-30/40 meters and 4652-01100-0 fits all DMS-20 meters. As shown in the illustrations, the adapter plate is first placed around the meter's case and then the bezel assembly is installed in the normal manner using its factory-supplied hardware.

| Adapter Dimensions | A | B | C | D |
|-------------------------------|-----------------|-----------------|-----------------|-----------------|
| 4652-01100-0 DMS-20PC | 1.290 (32.8) | 1.315 (33.4) | 0.815 (20.7) | 1.850 (47.0) |
| 4652-01101-0 DMS-30PC/40PC | 1.290 (32.8) | 2.110 (53.6) | 0.870 (22.1) | 2.570 (65.3) |

Dimensions: in. (mm) Tolerances: ±0.008 (±0.2)
 Adapter Plate is 0.020 (0.5) thick



ADAPTER PLATE INSTALLATION





Компания «ЭлектроПласт» предлагает заключение долгосрочных отношений при поставках импортных электронных компонентов на взаимовыгодных условиях!

Наши преимущества:

- Оперативные поставки широкого спектра электронных компонентов отечественного и импортного производства напрямую от производителей и с крупнейших мировых складов;
- Поставка более 17-ти миллионов наименований электронных компонентов;
- Поставка сложных, дефицитных, либо снятых с производства позиций;
- Оперативные сроки поставки под заказ (от 5 рабочих дней);
- Экспресс доставка в любую точку России;
- Техническая поддержка проекта, помощь в подборе аналогов, поставка прототипов;
- Система менеджмента качества сертифицирована по Международному стандарту ISO 9001;
- Лицензия ФСБ на осуществление работ с использованием сведений, составляющих государственную тайну;
- Поставка специализированных компонентов (Xilinx, Altera, Analog Devices, Intersil, Interpoint, Microsemi, Aeroflex, Peregrine, Syfer, Eurofarad, Texas Instrument, Miteq, Cobham, E2V, MA-COM, Hittite, Mini-Circuits, General Dynamics и др.);

Помимо этого, одним из направлений компании «ЭлектроПласт» является направление «Источники питания». Мы предлагаем Вам помощь Конструкторского отдела:

- Подбор оптимального решения, техническое обоснование при выборе компонента;
- Подбор аналогов;
- Консультации по применению компонента;
- Поставка образцов и прототипов;
- Техническая поддержка проекта;
- Защита от снятия компонента с производства.



Как с нами связаться

Телефон: 8 (812) 309 58 32 (многоканальный)

Факс: 8 (812) 320-02-42

Электронная почта: org@eplast1.ru

Адрес: 198099, г. Санкт-Петербург, ул. Калинина, дом 2, корпус 4, литера А.