

# WINTOTAL SOFTWARE

## Label/Marker Design Package

### Technical Datasheet

TTDS-001 Revision 11 - July 2015

WinTotal is a label/marker design package that makes wire marker printing simple in an industrial environment. Running in the familiar Windows environment,

WinTotal v6 has 2,500 standard TE Connectivity (TE) Identification products pre-installed. This makes the creation and printing of Identification sleeves or labels a quick and simple task. Using the advanced editor, it is also possible to create complex layouts that relate to active data fields, giving a true WYSIWYG representation.

WinTotal v6 now fully supports Unicode. This allows for multilingual text to be printed using any or all of the languages required. If a character has a Unicode equivalent, then WinTotal v6 will display and print that character, if it can be written into a Microsoft application, it can be copied into WinTotal v6.

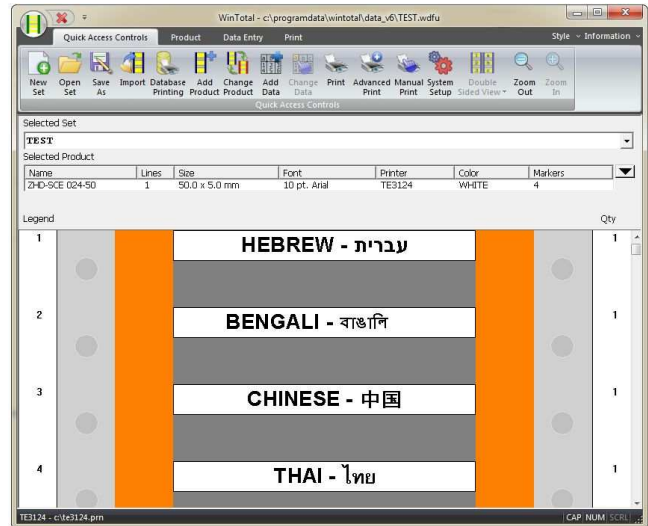
WinTotal features a highly graphical user interface to simplify operator training & minimize errors.

### Key Features

- Multi-lingual user interface
- Pre-loaded WYSIWYG templates
- Clipart gallery with commonly used symbols (*WinTotal v6 only*)
- Counters - Increment/Decrement alpha and numeric fields
- Accepts and prints data in any language – Unicode data support (*WinTotal v6 only*)
- Multiple Label Design Objects: Text, lines, boxes, circles and images
- Double sided marker printing with WYSIWYG display
- Live database view in fields
- Extensive Barcode and 2D barcode support
- All standard image files and elements supported (PNG, JPG, BMP)
- True print preview
- Advanced label design elements and tools: Text boxes, rich text formatting, auto/variable font size (*WinTotal v6 only*)
- Multiple Printers/Printing: Full MAPP (Multiple Application Port Printing). Able to drive multiple printers simultaneously with automatic selection via product or dataset

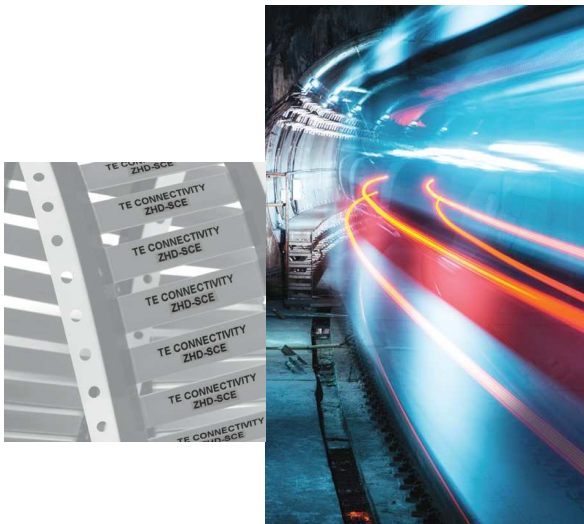
### System Requirements

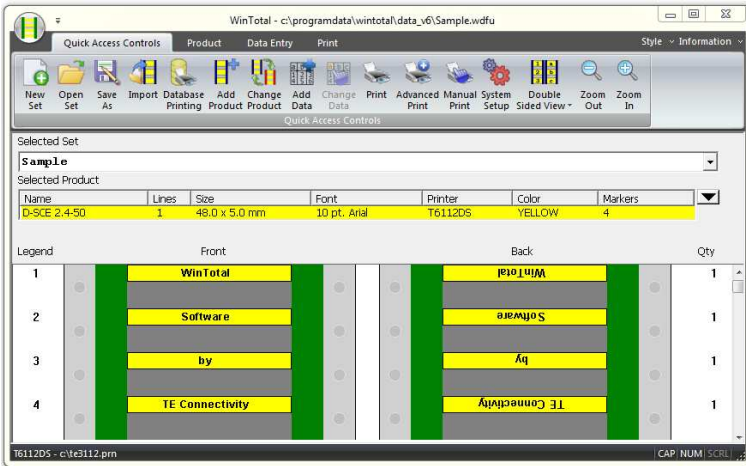
- Windows 10, 8.1, 8 or 7 (32bit or 64bit); Windows Server 2012 or 2008
- IBM compatible PC - 1GHz or higher 32bit (x86) or 64bit (x64) processor



### Supported Languages

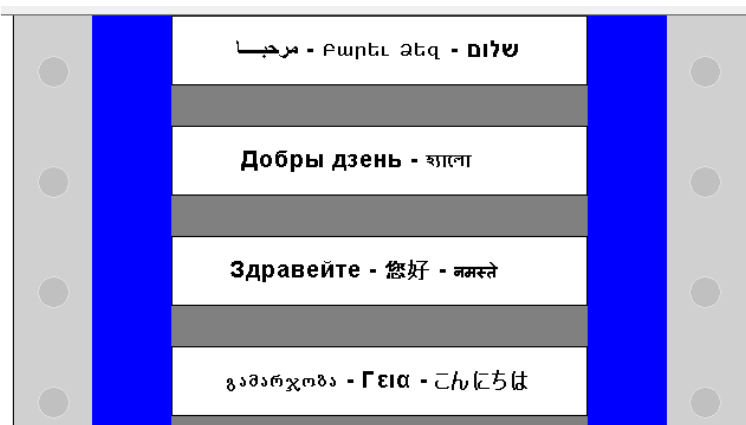
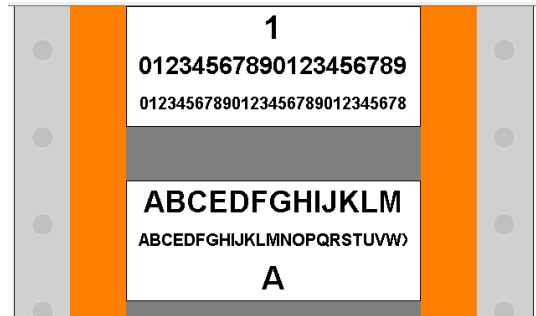
- Dutch
- English
- French
- German
- Italian
- Japanese
- Korean
- Norwegian
- Portuguese (Brazil)
- Russian
- Simplified Chinese
- Spanish
- Turkish





Double sided marker printing with WYSIWYG display (WinTotal v6 only).

Auto font sizing; string resizes to maximise contents (WinTotal v6 only).



Full Unicode support; enter and print any Unicode character (WinTotal v6 only).

**Ordering Information**

| Ordering Description        |            |  |   |
|-----------------------------|------------|--|---|
| WINTOTAL-6-DONGLE           | EC9816-000 |  |   |
| WINTOTAL-6-END-USER-LICENCE | EC9817-000 |  |   |
| WINTOTAL-5-DONGLE           | ED4097-000 |  | <i>for use with Dot Matrix printers</i> |
| WINTOTAL-5-LICENCE          | ED4098-000 |  | <i>for use with Dot Matrix printers</i> |

Dot matrix and impact printing is NOT supported by WinTotal v6. If printing on TE Dot Matrix (DM) products is required then WinTotal v5 is the recommended software.



### Printer Information

Print quality and print performance can only be guaranteed when specific TE printer and ribbons are used.

The current list of printers and ribbons can be found in TE document 411-121005 'Identification Printer Product Ribbon Matrix'. This document can be found in 'Access Our Tools':

<http://www.te.com/usa-en/utilities/access-product-tools-and-resources.html>

WINTOTAL software, available to download for a 14 day evaluation period from the Identification Printer Software page:

<http://www.te.com/usa-en/products/identification-labeling/printers-software/printing-software.html?tab=pgp-story>

Contact a TE representative for further information



### [www.te.com/rail](http://www.te.com/rail)

TE Connectivity, TE Connectivity (logo) and Every Connection Counts are trademarks. All other logos, products and/or company names referred to herein might be trademarks of their respective owners.

The information given herein, including drawings, illustrations and schematics which are intended for illustration purposes only, is believed to be reliable. However, TE Connectivity makes no warranties as to its accuracy or completeness and disclaims any liability in connection with its use. TE Connectivity's obligations shall only be as set forth in TE Connectivity's Standard Terms and Conditions of Sale for this product and in no case will TE Connectivity be liable for any incidental, indirect or consequential damages arising out of the sale, resale, use or misuse of the product. Users of TE Connectivity products should make their own evaluation to determine the suitability of each such product for the specific application.

© 2015 TE Connectivity Ltd. family of companies All Rights Reserved.



Компания «ЭлектроПласт» предлагает заключение долгосрочных отношений при поставках импортных электронных компонентов на взаимовыгодных условиях!

Наши преимущества:

- Оперативные поставки широкого спектра электронных компонентов отечественного и импортного производства напрямую от производителей и с крупнейших мировых складов;
- Поставка более 17-ти миллионов наименований электронных компонентов;
- Поставка сложных, дефицитных, либо снятых с производства позиций;
- Оперативные сроки поставки под заказ (от 5 рабочих дней);
- Экспресс доставка в любую точку России;
- Техническая поддержка проекта, помощь в подборе аналогов, поставка прототипов;
- Система менеджмента качества сертифицирована по Международному стандарту ISO 9001;
- Лицензия ФСБ на осуществление работ с использованием сведений, составляющих государственную тайну;
- Поставка специализированных компонентов (Xilinx, Altera, Analog Devices, Intersil, Interpoint, Microsemi, Aeroflex, Peregrine, Syfer, Eurofarad, Texas Instrument, Miteq, Cobham, E2V, MA-COM, Hittite, Mini-Circuits, General Dynamics и др.);

Помимо этого, одним из направлений компании «ЭлектроПласт» является направление «Источники питания». Мы предлагаем Вам помощь Конструкторского отдела:

- Подбор оптимального решения, техническое обоснование при выборе компонента;
- Подбор аналогов;
- Консультации по применению компонента;
- Поставка образцов и прототипов;
- Техническая поддержка проекта;
- Защита от снятия компонента с производства.



#### Как с нами связаться

**Телефон:** 8 (812) 309 58 32 (многоканальный)

**Факс:** 8 (812) 320-02-42

**Электронная почта:** [org@eplast1.ru](mailto:org@eplast1.ru)

**Адрес:** 198099, г. Санкт-Петербург, ул. Калинина, дом 2, корпус 4, литера А.