



MEMORY SOCKETS

Quick Reference Guide

TE Connectivity's (TE) main memory connectors are made to JEDEC industry standards for dual in-line memory modules (DIMM) and small outline DIMM (SO DIMM) as well as custom memory modules for server, workstation, desktop, notebook, storage and communication applications. Our memory socket portfolio covers the DDR2, DDR3, and DDR4 generations of sockets. Each product family consists of vertical and a few right-angle and various-angled configurations in solder tail and surface mount (SMT) mounting options.

Applications

- Servers
- High Performance Computing (HPC)
- Workstations
- Mass storages
- Communication equipment
- Desktop PCs
- Instrument equipment

Benefits

- Wide variety of options
- Enable reliable connections to standard memory modules
- Contact design protects against module stubbing

Features

- Designed to JEDEC industry standards for new and existing DIMM memory modules
- Provide end latches for module retention, ejection and mechanical voltage keying
- SO DIMM sockets are offered in several stacking heights to maximize board space

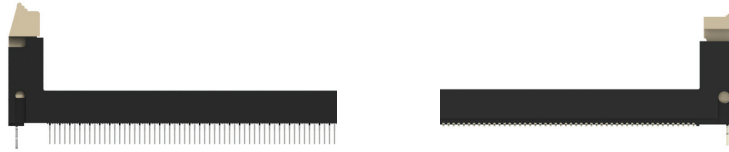
Memory Sockets

DIMM Sockets

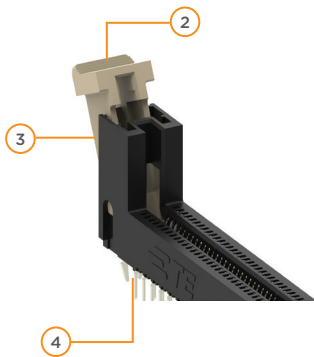
DIMM sockets enable reliable connection to standard memory modules

Through Hole (TH)

Surface Mount (SMT)



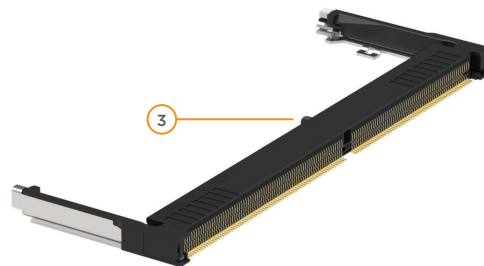
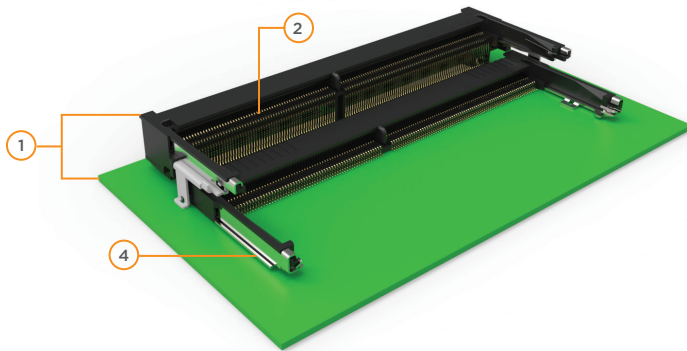
①



1. Various mounting types: through hole, surface mount
2. Various latch types: short and long latch to meet different space requirements
3. Multiple color options for latch and housing
4. Various contact length (TH) and plating options to meet different PCB and field lifetime

SO DIMM Sockets

SO DIMM sockets provide highly reliable, low cost, space saving benefits where height off the board is important



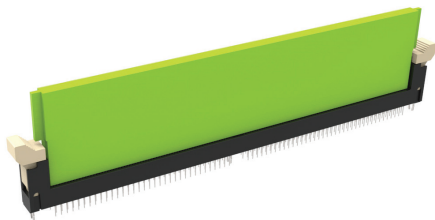
1. Multiple height options are ideal to stack and save space
2. Zero insertion force for easy module insertion
3. Two key types: standard and reverse key position to prevent mis-insertion
4. Latch floating helps ensure coplanarity and easy soldering

Memory Sockets

Technical Specifications

		DDR1/2 SO DIMM	DDR3 SO DIMM	DDR4 DIMM	DDR4 SO DIMM
Pin count		200	204	288	260
Card thickness		1.0+/-0.10	1.0+/-0.10	1.40+/-0.10	1.20+/-0.10
Pitch		0.6	0.6	0.85	0.5
Operation voltage		2.5V/1.8V	1.5V	1.2V	1.2V
Voltage (max)		25 VAC	25 VAC	25 VAC	25 VAC
Voltage key positions		Center	Center	Center	Center
Current (max)		0.5 A	0.5 A	0.75A	0.5 A
Low level contact resistance (mac)		50mΩ initial	50mΩ initial	10mΩ initial	50mΩ initial
Dielectric withstanding voltage		250 VAC	250 VAC	500 VAC	250 VAC
Insulation resistance (min)		250 MΩ initial	250 MΩ initial	1000 MΩ initial	250 MΩ initial
Module insertion force (with latch))		N/A	N/A	106N	N/A
Terminal retention force (min)		1.2N	1.2N	3N	1.2N
Fork lock		N/A	N/A	13.3N	N/A
Latch actuation force (to open)		N/A	N/A	20N	N/A
Module rip-out force at center (without damage)		N/A	N/A	20N max	N/A
PCB retention force		N/A	N/A	75N max	N/A
Durability (mating cycles)		25	25	25	25
Operating temperature		-55°C to 85°C	-55°C to 85°C	-55°C to 85°C	-55°C to 85°C
JEDEC Standards	Microelectronic Outlines	SO-005	SO-006	SO-016	SO-018
	Socket Outlines	MO-224	MO-268	MO-309	MO-310
Compliance		RoHS, ELV, UL 94V0			

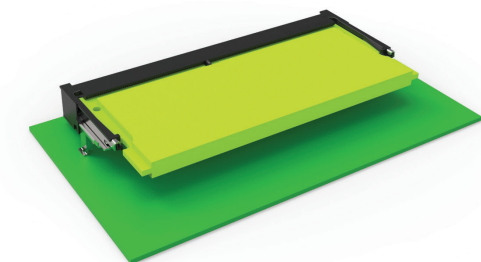
DIMM module fully inserted into socket



Applications:

- Servers
- Communications Equipment
- Workstations
- High-Performance Computing

SO DIMM module fully inserted into socket



Applications:

- Mass storage
- Communications
- Desktop PCs
- Instrument equipment

Memory Sockets

Part Number Detail

DDR4 DIMM

Part Number	Latch Type	Tail Length (mm)	Type	Contact Plating	Gold Thickness	Housing Color	Latch Color	Packaging
2308107-1	Long	2.4	TH	Gold	15u"	Black	Black	Tray
2308107-2	Long	2.4	TH	Gold	15u"	Blue	Natural	Tray
2308107-3	Long	2.4	TH	Gold	15u"	Green	Natural	Tray
2308107-4	Long	2.4	TH	Gold	30u"	Black	Black	Tray
2308107-5	Long	2.4	TH	Gold	30u"	Natural	Natural	Tray
2308107-6	Long	3.18	TH	Gold	15u"	Blue	Natural	Tray
2308107-7	Long	3.18	TH	Gold	15u"	Black	Natural	Tray
2308107-8	Long	2.1	TH	Gold	15u"	Green	Natural	Tray
2308107-9	Long	2.1	TH	Gold	15u"	Blue	Natural	Tray
1-2308107-0	Long	2.1	TH	Gold	15u"	Black	Natural	Tray
1-2308107-1	Long	2.67	TH	Gold	30u"	Black	Green	Tray
1-2308107-2	Long	2.67	TH	Gold	30u"	Black	Natural	Tray
1-2308107-3	Long	2.67	TH	Gold	30u"	Black	Black	Tray
1-2308107-4	Long	2.1	TH	Gold	30u"	Black	Green	Tray
1-2308107-5	Long	2.1	TH	Gold	30u"	Black	Natural	Tray
1-2308107-6	Long	2.1	TH	Gold	30u"	Black	Black	Tray
1-2308107-7	Long	3.18	TH	Gold	15u"	Black	Black	Tray
1-2308107-8	Long	3.18	TH	Gold	15u"	Natural	Natural	Tray
1-2308107-9	Long	3.18	TH	Gold	15u"	Green	Green	Tray
2-2308107-0	Long	3.18	TH	Gold	15u"	Blue	Blue	Tray
2-2308107-1	Long	2.4	TH	Gold	15u"	Black	Natural	Tray
5-2308107-1	Short	2.67	TH	Gold	15u"	Black	Natural	Tray
5-2308107-2	Short	2.67	TH	Gold	15u"	Blue	Natural	Tray
5-2308107-3	Short	2.67	TH	Gold	15u"	Natural	Natural	Tray
5-2308107-4	Short	2.67	TH	Gold	15u"	Black	Black	Tray
5-2308107-5	Short	2.67	TH	Gold	30u"	Natural	Natural	Tray
5-2308107-6	Short	2.67	TH	Gold	30u"	Black	Black	Tray
5-2308107-7	Short	2.1	TH	Gold	30u"	Black	Black	Tray
5-2308107-8	Short	2.1	TH	Gold	30u"	Natural	Natural	Tray
5-2308107-9	Short	3.18	TH	Gold	30u"	Black	Black	Tray
6-2308107-0	Short	3.18	TH	Gold	30u"	Black	Natural	Tray
6-2308107-1	Short	3.18	TH	Gold	30u"	Black	Green	Tray
2199155-7	Short	N/A	SMT	Gold	30u"	Black	Green	Tray
2199155-6	Short	N/A	SMT	Gold	30u"	Natural	Natural	Tray
2199155-4	Short	N/A	SMT	Gold	30u"	Black	Black	Tray
2199155-3	Short	N/A	SMT	Gold	15u"	Black	Black	Tray
2199155-2	Short	N/A	SMT	Gold	30u"	Black	Natural	Tray
2199155-1	Short	N/A	SMT	Gold	15u"	Black	Natural	Tray

DDR4 SO DIMM

Packaging	Height (mm)	Module Orientation	Type	Part Number	Contact Gold Plating Thickness				
					GF	5u"	10u"	15u"	30u"
Tape & Reel	4.0	Right Angle	SMT, Std	2309407-x	-1	-2	-3	-4	-5
		Right Angle	SMT, Rvs	2309408-x	-1	-2	-3	-4	-5
	5.2	Right Angle	SMT, Std	2309409-x	-1	-2	-3	-4	-5
		Right Angle	SMT, Rvs	2309410-x	-1	-2	-3	-4	-5
	8.0	Right Angle	SMT, Std	2309411-x	-1	-2	-3	-4	-5
		Right Angle	SMT, Rvs	2309412-x	-1	-2	-3	-4	-5
	9.2	Right Angle	SMT, Std	2309413-x	-1	-2	-3	-4	-5
		Right Angle	SMT, Rvs	2309414-x	-1	-2	-3	-4	-5

Memory Sockets

Part Number Detail

DDR3 SO DIMM

Part Number	Module Orientation	Type	Contact Plating	Gold Thickness	Housing Color	Height (mm)	Packaging
2013022-1	Right Angle	SMT, Std	Gold	GF	Black	4.0	Tray
2-2013022-1	Right Angle	SMT, Std	Gold	GF	Black	4.0	Reel
2-2013022-2	Right Angle	SMT, Std	Gold	10u"	Black	4.0	Reel
2-2013022-3	Right Angle	SMT, Std	Gold	30u"	Black	4.0	Reel
2-2013287-1	Right Angle	SMT, Rvs	Gold	GF	Black	4.0	Reel
2013289-1	Right Angle	SMT, Std	Gold	GF	Black	5.2	Tray
2013289-2	Right Angle	SMT, Std	Gold	10u"	Black	5.2	Tray
2013289-3	Right Angle	SMT, Std	Gold	30u"	Black	5.2	Tray
2-2013289-1	Right Angle	SMT, Std	Gold	GF	Black	5.2	Reel
2-2013289-2	Right Angle	SMT, Std	Gold	10u"	Black	5.2	Reel
2-2013289-3	Right Angle	SMT, Std	Gold	30u"	Black	5.2	Reel
2013290-1	Right Angle	SMT, Rvs	Gold	GF	Black	5.2	Tray
2013290-2	Right Angle	SMT, Rvs	Gold	10u"	Black	5.2	Tray
2-2013290-1	Right Angle	SMT, Rvs	Gold	GF	Black	5.2	Reel
2-2013290-2	Right Angle	SMT, Rvs	Gold	10u"	Black	5.2	Reel
2-2013290-3	Right Angle	SMT, Rvs	Gold	30u"	Black	5.2	Reel
2-2013297-1	Right Angle	SMT, Std	Gold	GF	Black	8.0	Reel
2013310-1	Right Angle	SMT, Std	Gold	GF	Black	9.2	Tray
2013310-3	Right Angle	SMT, Std	Gold	30u"	Black	9.2	Tray
2-2013310-1	Right Angle	SMT, Std	Gold	GF	Black	9.2	Reel
2-2013310-2	Right Angle	SMT, Std	Gold	10u"	Black	9.2	Reel
2-2013311-1	Right Angle	SMT, Rvs	Gold	GF	Black	9.2	Reel

DDR2 SO DIMM

Part Number	Module Orientation	Type	Power Supply	Housing Color	Height (mm)	Packaging	Remark
1473005-4	Right Angle	SMT, Std	1.8V	Black	5.2	Tray	N/A
1717254-4	Right Angle	SMT, Std	1.8V	Black	5.2	Reel	N/A
1473149-4	Right Angle	SMT, Std	1.8V	Black	5.2	Tray	New Latch Type
1473150-4	Right Angle	SMT, Rvs	1.8V	Black	5.2	Tray	New Latch Type
1565917-4	Right Angle	SMT, Std	1.8V	Black	5.2	Reel	Emboss
1565918-4	Right Angle	SMT, Rvs	1.8V	Black	5.2	Reel	Emboss
1612773-4	Right Angle	SMT, Rvs	1.8V	Black	6.5	Tray	N/A

DDR1 SO DIMM

Part Number	Module Orientation	Type	Power Supply	Housing Color	Height (mm)	Packaging	Remark
1473005-1	Right Angle	SMT, Std	2.5V	Black	5.2	Tray	N/A
1-1473005-1	Right Angle	SMT, Std	2.5V	Black	5.2	Tray	Bossless
1717254-1	Right Angle	SMT, Std	2.5V	Black	5.2	Reel	N/A
5-1612773-1	Right Angle	SMT, Rvs	2.5V	Gray	6.5	Tray	N/A

Frequently Asked Questions

Question 1

Is it possible to stack two SO DIMM module cards by using different height SO DIMM sockets?

Answer 1

Yes, it is possible and 8H or 9.2H height SODIMM socket is suggested to be used with 4H height SODIMM socket, and 9.2H height SODIMM socket is suggested to be used with 5.2H height SODIMM socket. When designing the printed circuit board (PCB), two SODIMM socket footprints are still needed and they can be next to each other, so when inserting the SODIMM module cards to two different height SODIMM sockets, you will find the two module cards are kind of stacked.

Question 2

Are all TE memory sockets RoHS compliant and halogen free ?

Answer 2

Yes, TE's DDR1/2 SODIMM, DDR3 SODIMM, and DDR4 DIMM and SODIMM are all RoHS compliant and halogen free.

Question 3

What is the suggested thickness of solder paste on the printed circuit board (PCB) for surface mount technology (SMT) memory sockets?

Answer 3

For SMT type TE memory sockets, 0.13mm solder paste thickness is suggested to achieve the required flatness specification.

TE Technical Support Center

USA:	1.800.522.6752
Canada:	1.905.475.6222
Mexico:	52.0.55.1106.0800
Latin/S. America:	54.0.11.4733.2200
Germany:	49.0.6251.133.1999
UK:	44.0.800.267666
France:	33.0.1.3420.8686
Netherlands:	31.0.73.6246.999
China:	86.0.400.820.6015

te.com

TE Connectivity, TE Connectivity (logo) and EVERY CONNECTION COUNTS are trademarks of the TE Connectivity Ltd. family of companies.

All other logos, products and/or company names referred to herein might be trademarks of their respective owners.

The information given herein, including drawings, illustrations and schematics which are intended for illustration purposes only, is believed to be reliable. However, TE Connectivity makes no warranties as to its accuracy or completeness and disclaims any liability in connection with its use. TE Connectivity's obligations shall only be as set forth in TE Connectivity's Standard Terms and Conditions of Sale for this product and in no case will TE Connectivity be liable for any incidental, indirect or consequential damages arising out of the sale, resale, use or misuse of the product. Users of TE Connectivity products should make their own evaluation to determine the suitability of each such product for the specific application.

© 2017 TE Connectivity Ltd. family of companies All Rights Reserved.

1-1773929-8 07/17



Компания «ЭлектроПласт» предлагает заключение долгосрочных отношений при поставках импортных электронных компонентов на взаимовыгодных условиях!

Наши преимущества:

- Оперативные поставки широкого спектра электронных компонентов отечественного и импортного производства напрямую от производителей и с крупнейших мировых складов;
- Поставка более 17-ти миллионов наименований электронных компонентов;
- Поставка сложных, дефицитных, либо снятых с производства позиций;
- Оперативные сроки поставки под заказ (от 5 рабочих дней);
- Экспресс доставка в любую точку России;
- Техническая поддержка проекта, помощь в подборе аналогов, поставка прототипов;
- Система менеджмента качества сертифицирована по Международному стандарту ISO 9001;
- Лицензия ФСБ на осуществление работ с использованием сведений, составляющих государственную тайну;
- Поставка специализированных компонентов (Xilinx, Altera, Analog Devices, Intersil, Interpoint, Microsemi, Aeroflex, Peregrine, Syfer, Eurofarad, Texas Instrument, Miteq, Cobham, E2V, MA-COM, Hittite, Mini-Circuits, General Dynamics и др.);

Помимо этого, одним из направлений компании «ЭлектроПласт» является направление «Источники питания». Мы предлагаем Вам помощь Конструкторского отдела:

- Подбор оптимального решения, техническое обоснование при выборе компонента;
- Подбор аналогов;
- Консультации по применению компонента;
- Поставка образцов и прототипов;
- Техническая поддержка проекта;
- Защита от снятия компонента с производства.



Как с нами связаться

Телефон: 8 (812) 309 58 32 (многоканальный)

Факс: 8 (812) 320-02-42

Электронная почта: org@eplast1.ru

Адрес: 198099, г. Санкт-Петербург, ул. Калинина, дом 2, корпус 4, литера А.