



***Lattice*CORE™**

Dynamic Block Reed-Solomon Decoder User's Guide

Chapter 1. Introduction	4
Quick Facts	4
Features	8
Chapter 2. Functional Description	10
Block Diagram	10
General Description	10
Field Polynomial	11
Generator Polynomial	11
Shortened Codes	11
Systematic Decoder	11
Decoding Modes	11
Functional Description	12
Syndrome Transform	13
Key Equation Solver	13
Error Locator	13
Error Magnitude Corrector	13
Control Unit	13
Basis Conversion Modules	13
Variable Block Size	13
Variable Check Symbols	14
Puncturing Pattern File Format	14
Default Field Polynomials	14
Signal Descriptions	15
Timing Specifications	17
Chapter 3. Parameter Settings	20
RS Decoder Configuration GUI	21
Core Configuration	21
RS Parameters	21
Check Symbols	22
Block Size Type	22
Puncturing	22
Decoding Mode	22
Memory Type	22
Optional Ports	23
Chapter 4. IP Core Generation	24
Licensing the IP Core	24
Getting Started	24
IPexpress-Created Files and Top Level Directory Structure	26
Instantiating the Core	28
Running Functional Simulation	28
Synthesizing and Implementing the Core in a Top-Level Design	28
Hardware Evaluation	29
Enabling Hardware Evaluation in Diamond	29
Enabling Hardware Evaluation in ispLEVER	29
Updating/Regenerating the IP Core	29
Regenerating an IP Core in Diamond	29
Regenerating an IP Core in ispLEVER	30
Chapter 5. Support Resources	31
Lattice Technical Support	31

Online Forums.....	31
Telephone Support Hotline	31
E-mail Support	31
Local Support.....	31
Internet.....	31
References.....	31
LatticeEC/ECP	31
LatticeECP2M	31
LatticeECP3	31
LatticeSC/M.....	32
LatticeXP	32
LatticeXP2.....	32
Related Information.....	32
Revision History	32
Appendix A. Resource Utilization	33
LatticeECP and LatticeEC FPGAs	34
Ordering Part Number.....	34
LatticeECP2 and LatticeECP2S FPGAs	34
Ordering Part Number.....	34
LatticeECP2M and LatticeECP2MS FPGAs	35
Ordering Part Number.....	35
LatticeECP3 FPGAs.....	35
Ordering Part Number.....	35
LatticeXP FPGAs	36
Ordering Part Number.....	36
LatticeXP2 FPGAs	36
Ordering Part Number.....	36
LatticeSC and LatticeSCM FPGAs	37
Ordering Part Number.....	37

Reed-Solomon codes are widely used in various communications and storage applications for forward error correction. Reed-Solomon codes are well suited for burst error correction and are frequently used as outer codes in communication systems. A Reed-Solomon Decoder performs detection and correction of the encoded data at the receiver. Lattice’s Dynamic Block Reed-Solomon Decoder (RS Decoder) IP core is compliant with several industry standards including the more recent IEEE 802.16-2004 and can be custom configured to support other non-standard applications as well. The RS Decoder supports a wide range of symbol widths and allows the user to define the field polynomial, generator polynomial and several other parameters.

The newer standards like IEEE 802.16-2004 require the use of Reed-Solomon codes with dynamically varying block sizes. Lattice’s RS Decoder IP core provides an ideal solution that meets such needs of today’s forward error correction world. This core allows the block size and number of check symbols to be varied dynamically through input ports. Lattice’s RS Decoder IP can be used with Lattice’s RS Decoder for a complete Reed-Solomon code based forward error correction application. For more information on these and other IP products for forward error correction, refer to the Lattice web site at www.latticesemi.com/products/intellectualproperty.

Quick Facts

Table 1-1 through Table 1-9 give quick facts about the RS Decoder IP core for LatticeEC™, LatticeECP™, LatticeECP2™, LatticeSC™, LatticeSCM™, LatticeXP™, LatticeECP2M™, LatticeXP2™, and LatticeECP3™ devices.

Table 1-1. RS Decoder IP core for LatticeEC Devices Quick Facts

		RS Decoder IP Configuration					
		OC-192	CCSDS	DVB	ATSC	IEEE 802.16-2004 SCa/OFDM	IEEE 802.16-2004 SC
Core Requirements	FPGA Families Supported	LatticeEC					
	Minimal Device Needed	LFEC1E	LFEC3E	LFEC1E	LFEC3E	LFEC3E	LFEC3E
Resource Utilization	Targeted Device	LFEC20E-5F672C					
	LUTs	1100	2000	1200	1500	1900	2100
	sysMEM EBRs	2	2	2	2	3	3
	Registers	900	1500	900	1100	1400	1600
Design Tool Support	Lattice Implementation	Lattice Diamond™ 1.0 or ispLEVER® 8.1					
	Synthesis	Synopsys® Synplify™ Pro for Lattice D-2009.12L-1					
	Simulation	Aldec® Active-HDL™ 8.2 Lattice Edition Mentor Graphics® ModelSim™ SE 6.3F					

Table 1-2. RS Decoder IP core for LatticeECP Devices Quick Facts

		RS Decoder IP Configuration					
		OC-192	CCSDS	DVB	ATSC	IEEE 802.16-2004 SCA/OFDM	IEEE 802.16-2004 SC
Core Requirements	FPGA Families Supported	LatticeECP					
	Minimal Device Needed	LFECP6E					
Resource Utilization	Targeted Device	LFECP20E-5F672C					
	LUTs	1100	2000	1200	1500	1900	2100
	sysMEM EBRs	2	2	2	2	3	3
	Registers	900	1500	900	1100	1400	1600
Design Tool Support	Lattice Implementation	Lattice Diamond 1.0 or ispLEVER 8.1					
	Synthesis	Synopsys Synplify Pro for Lattice D-2009.12L-1					
	Simulation	Aldec Active-HDL 8.2 Lattice Edition Mentor Graphics ModelSim SE 6.3F					

Table 1-3. RS Decoder IP core for LatticeECP2 Devices Quick Facts

		RS Decoder IP Configuration					
		OC-192	CCSDS	DVB	ATSC	IEEE 802.16-2004 SCA/OFDM	IEEE 802.16-2004 SC
Core Requirements	FPGA Families Supported	LatticeECP2					
	Minimal Device Needed	LFE2-6E					
Resource Utilization	Targeted Device	LFE2-50E-7F672C					
	LUTs	1100	2000	1200	1500	1800	2100
	sysMEM EBRs	2	2	2	2	3	3
	Registers	900	1500	900	1100	1400	1600
Design Tool Support	Lattice Implementation	Lattice Diamond 1.0 or ispLEVER 8.1					
	Synthesis	Synopsys Synplify Pro for Lattice D-2009.12L-1					
	Simulation	Aldec Active-HDL 8.2 Lattice Edition Mentor Graphics ModelSim SE 6.3F					

Table 1-4. RS Decoder IP core for LatticeSC Devices Quick Facts

		RS Decoder IP Configuration					
		OC-192	CCSDS	DVB	ATSC	IEEE 802.16-2004 SCa/OFDM	IEEE 802.16-2004 SC
Core Requirements	FPGA Families Supported	LatticeSC					
	Minimal Device Needed	LFSC3GA15E					
Resource Utilization	Targeted Device	LFSC3GA25E-7F900C					
	LUTs	1200	2000	1200	1600	1900	2200
	sysMEM EBRs	2	2	2	2	3	3
	Registers	900	1500	900	1000	1400	1600
Design Tool Support	Lattice Implementation	Lattice Diamond 1.0 or ispLEVER 8.1					
	Synthesis	Synopsys Synplify Pro for Lattice D-2009.12L-1					
	Simulation	Aldec Active-HDL 8.2 Lattice Edition Mentor Graphics ModelSim SE 6.3F					

Table 1-5. RS Decoder IP core for LatticeSCM Devices Quick Facts

		RS Decoder IP Configuration					
		OC-192	CCSDS	DVB	ATSC	IEEE 802.16-2004 SCa/OFDM	IEEE 802.16-2004 SC
Core Requirements	FPGA Families Supported	Lattice SCM					
	Minimal Device Needed	LFSCM3GA15EP1					
Resource Utilization	Targeted Device	LFSCM3GA25EP1-7F900C					
	LUTs	1200	2000	1200	1600	1900	2200
	sysMEM EBRs	2	2	2	2	3	3
	Registers	900	1500	900	1000	1400	1600
Design Tool Support	Lattice Implementation	Lattice Diamond 1.0 or ispLEVER 8.1					
	Synthesis	Synopsys Synplify Pro for Lattice D-2009.12L-1					
	Simulation	Aldec Active-HDL 8.2 Lattice Edition Mentor Graphics ModelSim SE 6.3F					

Table 1-6. RS Decoder IP core for LatticeXP Devices Quick Facts

		RS Decoder IP Configuration					
		OC-192	CCSDS	DVB	ATSC	IEEE 802.16-2004 SCa/OFDM	IEEE 802.16-2004 SC
Core Requirements	FPGA Families Supported	Lattice XP					
	Minimal Device Needed	LFXP3E					
Resource Utilization	Targeted Device	LFXP20E-5F484C					
	LUTs	1100	2000	1200	1500	1900	2100
	sysMEM EBRs	2	2	2	2	3	3
	Registers	900	1500	900	1100	1400	1600
Design Tool Support	Lattice Implementation	Lattice Diamond 1.0 or ispLEVER 8.1					
	Synthesis	Synopsys Synplify Pro for Lattice D-2009.12L-1					
	Simulation	Aldec Active-HDL 8.2 Lattice Edition Mentor Graphics ModelSim SE 6.3F					

Table 1-7. RS Decoder IP core for LatticeECP2M Devices Quick Facts

		RS Decoderr IP Configuration					
		OC-192	CCSDS	DVB	ATSC	IEEE 802.16-2004 SCa/OFDM	IEEE 802.16-2004 SC
Core Requirements	FPGA Families Supported	Lattice ECP2M					
	Minimal Device Needed	LFE2M20E					
Resource Utilization	Targeted Device	LFE2M35E-7F484C					
	LUTs	1100	2000	1200	1500	1800	2100
	sysMEM EBRs	2	2	2	2	3	3
	Registers	900	1500	900	1100	1400	1600
Design Tool Support	Lattice Implementation	Lattice Diamond 1.0 or ispLEVER 8.1					
	Synthesis	Synopsys Synplify Pro for Lattice D-2009.12L-1					
	Simulation	Aldec Active-HDL 8.2 Lattice Edition Mentor Graphics ModelSim SE 6.3F					

Table 1-8. RS Decoder IP core for LatticeXP2 Devices Quick Facts

		RS Decoder IP Configuration					
		OC-192	CCSDS	DVB	ATSC	IEEE 802.16-2004 SCa/OFDM	IEEE 802.16-2004 SC
Core Requirements	FPGA Families Supported	Lattice XP2					
	Minimal Device Needed	LFXP2-5E					
Resource Utilization	Targeted Device	LFXP2-17E-7FT256C					
	LUTs	1100	2000	1200	1500	1800	2100
	sysMEM EBRs	2	2	2	2	3	3
	Registers	900	1500	900	1100	1400	1600
Design Tool Support	Lattice Implementation	Lattice Diamond 1.0 or ispLEVER 8.1					
	Synthesis	Synopsys Synplify Pro for Lattice D-2009.12L-1					
	Simulation	Aldec Active-HDL 8.2 Lattice Edition Mentor Graphics ModelSim SE 6.3F					

Table 1-9. RS Decoder IP core for LatticeECP3 Devices Quick Facts

		RS Decoder IP Configuration					
		OC-192	CCSDS	DVB	ATSC	IEEE 802.16-2004 SCa/OFDM	IEEE 802.16-2004 SC
Core Requirements	FPGA Families Supported	Lattice ECP3					
	Minimal Device Needed	LFE3-35EA					
Resource Utilization	Targeted Device	LFE3-95E-8FN672CES					
	LUTs	1100	2000	1200	1500	1800	2100
	sysMEM EBRs	2	2	2	2	3	3
	Registers	900	1500	900	1100	1400	1600
Design Tool Support	Lattice Implementation	Lattice Diamond 1.0 or ispLEVER 8.1					
	Synthesis	Synopsys Synplify Pro for Lattice D-2009.12L-1					
	Simulation	Aldec Active-HDL 8.2 Lattice Edition Mentor Graphics ModelSim SE 6.3F					

Features

- 3- to 12-Bit Symbol Width
- Configurable Field Polynomial
- Configurable Generator Polynomial: Starting Root and Root Spacing
- User-defined Codewords
 - Maximum of 4095 symbols
 - Maximum of 256 check symbols
 - Shortened codes
- Off-the-shelf Support for the Following Communication Standards:
 - OC-192
 - DVB

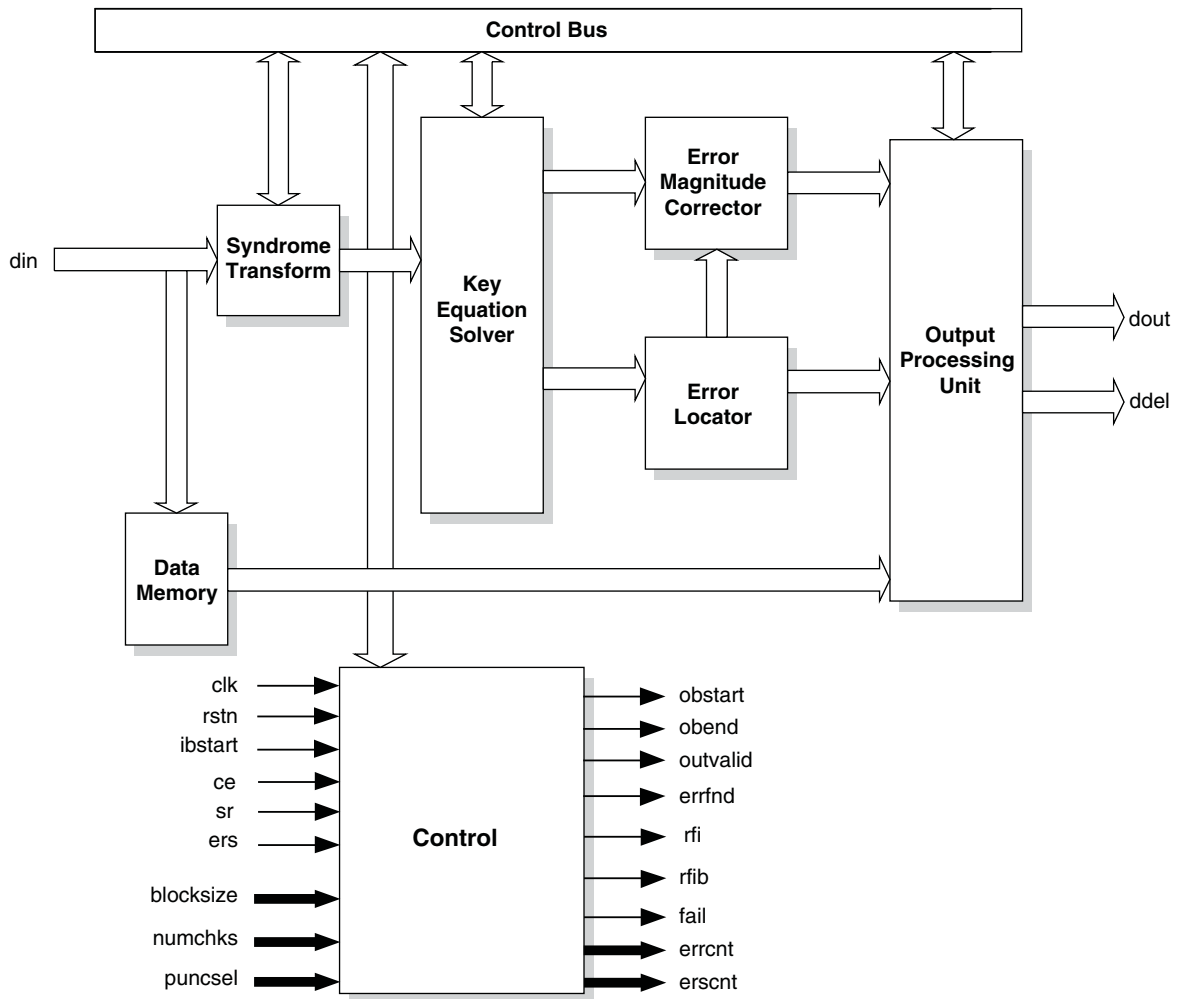
- CCSDS
 - ATSC
 - IEEE 802.16-2004 WirelessMAN-SCa/OFDM
 - IEEE 802.16-2004 WirelessMAN-SC
- Fully Synchronous
- Systematic Decoder
- Full Handshaking Capability
- Dynamically Variable Block Size
- Dynamically Variable Check Symbols
- Error, Erasure and Puncturing Modes
- Error Measurement Information

Functional Description

A block diagram of the RS Decoder is shown in [Figure 2-1](#). The RS Decoder IP is comprised of the Syndrome Transform, Key Equation Solver, Error Locator, Error Magnitude Corrector, Data Memory and Output Processing blocks.

Block Diagram

Figure 2-1. RS Decoder Block Diagram



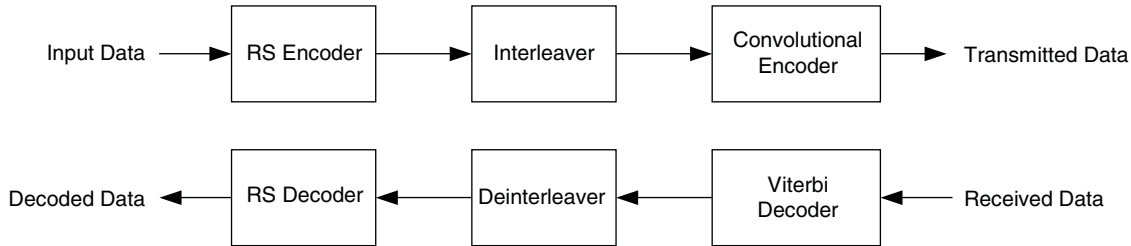
General Description

Reed-Solomon codes are used to perform Forward Error Correction (FEC). FEC introduces controlled redundancy in the data before it is transmitted to allow error correction at the receiver. The redundant data (check symbols) are transmitted with the original data to the receiver. An RS Decoder is used in the receiver to correct any transmission errors. This type of error correction is widely used in data communications applications such as Digital Video Broadcasting (DVB) and Optical Carriers (i.e. OC-192).

Reed-Solomon codes are written in the format $RS(n,k)$ where k is the number of information symbols and n is the total number of symbols in a codeword or block. Each symbol in the codeword is w_{sym} bits wide. The RS Decoder performs detection and correction of encoded data available at the receiver after demodulation. The RS encoded data is then processed to determine whether any errors have occurred during transmission. Once the number of

errors is determined, the decoder decides if they are within the range of correction. After determining this, the decoder corrects the errors in the received data. A typical application of space signal processing is shown in Figure 2-2.

Figure 2-2. Application of Reed-Solomon Code in a Space Communication System



Reed-Solomon codes are defined on a finite field known as Galois field. The size of the field is determined by the symbol width, w_{symb} , and is equal to $2^{w_{\text{symb}}}$. When n is less than its maximum value of $2^{w_{\text{symb}}}-1$, the corresponding code $RS(n,k)$ is referred to as a shortened code.

Reed-Solomon codes are characterized by two polynomials: the generator polynomial and the field polynomial. The field polynomial defines the Galois field where the information and check symbols belong. The generator polynomial determines the check symbol generation and it is a prime polynomial for all codewords (i.e. all codewords are exactly divisible by the generator polynomial). Both the field and the generator polynomials are user configurable.

Field Polynomial

The field polynomial is defined by its decimal value (f). The decimal value of a field polynomial is obtained by setting $x = 2$ in the polynomial. For example, the polynomial $x^2 + x + 1$ in decimal value is $2^2 + 2 + 1 = 7$. The field polynomial can be specified as any prime polynomial with decimal value up to $2^{w_{\text{symb}+1}} - 1$.

Generator Polynomial

The generator polynomial determines the value of the check symbols. The generator polynomial can be defined by the parameters starting root (g_{start}) and root spacing ($r_{\text{rootspace}}$). The general form of the generator polynomial is given by:

$$g(x) = \prod_{i=0}^{n-k-1} (x - \alpha^{r_{\text{rootspace}} \cdot (g_{\text{start}} + i)}) \tag{1}$$

where α is called the primitive element of the field polynomial. For a binary Galois field $GF(2)$, α is equal to 2.

Shortened Codes

When the size of the Reed-Solomon codewords, n , is less than the maximum possible size, $2^{w_{\text{symb}}}-1$, they are called shortened codes. For example, RS (204,188) when $w_{\text{symb}} = 8$ is a shortened code.

Systematic Decoder

The decoder can only decode data encoded by a systematic Reed-Solomon Encoder. In a systematic encoder, the information symbols are unchanged and are followed by check symbols in the output.

Decoding Modes

The decoder can support Error, Erasure and Puncturing modes. In the error mode no information is available about the symbols in error. In this mode the decoder needs to compute both position and magnitude of the error symbols. In the erasure mode the user can dynamically indicate the erased symbols using the input port `ers`. Erased symbols are those symbols in error whose positions are known in advance. Error mode can be thought of a special case of Erasure mode, when number of erased symbols is zero. Therefore it is not necessary to identify all correctable errors as erasures through the input port `ers` in the erasure mode and combinations of errors and erasures

can be used. If erased symbols are known and the position of the erased symbols can be dynamically indicated using `ers`, then erasure mode is useful. The symbol correction capability of the decoder increases since the position of the symbol in error is already known and only the magnitude needs to be computed. Generally erasure support substantially increases the decoder latency and resource utilization. Puncturing mode is an optimized version of the erasure mode and can be used when the position of the erased symbols is known in advance. The user can define a maximum of $(n - k)$ puncture patterns and can dynamically select one of these patterns using the input port `puncsel`. The format for the puncture pattern file is explained in a later section. The decoder will be able to correct the errors and erasures successfully if the following conditions are satisfied.

For the Error mode, the number of correctable errors E_{err} is given by

$$E_{err} = (n - k) / 2, \text{ when Block size type is constant.}$$

$$E_{err} = (\text{Number of check symbols}) / 2, \text{ when Block size type is variable and Variable check symbols is not defined.}$$

$$E_{err} = (\text{value on numchks port}) / 2, \text{ when Variable check symbols is defined.}$$

For the Erasure and Puncturing modes, the number of correctable errors E_{err} and the number of correctable erasures E_{ers} (given through the input port `ers`) are bound by the following relations

$$(2 * E_{err} + E_{ers} \delta (n - k)) \text{ and } (E_{ers} ((n - k - 2))), \text{ when Block size type is constant.}$$

$$(2 * E_{err} + E_{ers} \delta (\text{Number of check symbols})) \text{ and } (E_{ers} \delta (\text{Number of check symbols} - 2)), \text{ when Block size type is variable.}$$

Functional Description

A block diagram of the RS Decoder is shown in [Figure 2-1](#). The RS Decoder is comprised of the Syndrome Transform, Key Equation Solver, Error Locator, Error Magnitude Corrector, Data Memory and Output Processing blocks.

The data received by the RS Decoder is Reed-Solomon encoded data. This data is a representation of a polynomial in a Galois Field. If there are no errors in the received data, the data polynomial will evaluate to zero at the roots of the generator polynomial. This result is obtained because the roots of the generator polynomial and the received data polynomial are the same when there are no errors. If the received data has been corrupted during the transmission, the polynomial will not evaluate to zero. The RS Decoder can construct the syndrome polynomial by evaluating the received polynomial at all the roots of the generator polynomial. Once the syndrome polynomial has been constructed, it can be used to solve the Error Locator polynomial and Error Evaluator polynomial. Using these two polynomials, the decoder can find the error locations and magnitudes. Finally, the decoder can correct the errors in the received data, provided the errors are in the range of correctable errors (determined by the level of encoding that has been performed).

If there are errors in the received codeword, it can be expressed as follows:

$$r(x) = c(x) + e(x)$$

where:

$c(x)$ is the Transmitted codeword

$r(x)$ is the Received codeword

$e(x)$ is the Error polynomial

The syndrome polynomial $S(x)$ is obtained by evaluating the received word at each root of the generator polynomial. The Error Locator polynomial $\Lambda(x)$ is orthogonal to the syndrome polynomial in the Galois field. This can be represented as:

$$S(x)\Lambda(x) = \mathcal{E}(x) \bmod x^{2t}$$

where:

$\mathcal{E}(x)$ is the Error Evaluator polynomial.

$2t$ is the number of check symbols introduced in the encoder.

The following sections describe the function of each block of the RS Decoder.

Syndrome Transform

The Syndrome Transform (also called Syndrome Generation) block evaluates the received codeword of the generator polynomial. If the received data contains an error, the syndrome polynomial generated will be non-zero. If the received data has no error, the syndrome polynomial is zero, and the data is passed out of the decoder without any error correction.

Key Equation Solver

This is the heart of the RS Decoder. This block generates the Error Locator polynomial $\Lambda(x)$ (also known as the “Key Equation” as it is the key to solve the decoding problem). After the Error Locator polynomial has been determined, it is used to compute the Error Evaluator polynomial $\mathcal{E}(x)$.

Error Locator

This block is implemented using the Chien-search method. Essentially, this method evaluates the Error Locator polynomial at all the elements in the Galois Field. The Error Locator polynomial evaluates to zero at its roots. The Chien-search takes up to m cycles, where m is the number of elements in the Galois Field, to determine all the roots. If the roots are determined before m cycles are over, the search is terminated early.

Error Magnitude Corrector

Once the location of the error has been determined, the Error Magnitude Corrector evaluates the evaluator polynomial at that root. It uses the result to calculate the value of the error at the given location. Once this has been determined, the value is added to the received word to recover the original data. The addition occurs only when the Error Locator polynomial evaluates to zero.

Control Unit

The control unit handles the interface, pipelining and handshaking communication between the various blocks and the I/O ports. The control circuit moves the data without processing it through the decoder when no error is detected. Similarly, when the number of errors exceeds the maximum range of correction, the control circuit stops all data processing activities. The control circuit interacts with the other blocks to generate the status signals like `obstart`, `obend`, `outvalid`, `rfib`, `errfnd`, `errcnt`, `erscnt` and `fail`. Once the block has been processed, the control circuit sends out the `rfi` signal to the output to start the processing of the next data block.

Basis Conversion Modules

When core configuration is selected as CCSDS, then two additional Basis Conversion modules are added to the RS Decoder. These modules comply with the CCSDS specification. Dual-basis to normal polynomial-basis conversion module is added after the `din` input port and normal polynomial-basis to dual-basis conversion module is added before the `dout` output port.

Variable Block Size

In the constant `Block size type` option, the block size value and number of information symbols are provided as constant values through the RS Decoder GUI before core generation. For variable `Block size type` option, the block size value is provided dynamically through the input port `blocksize`. The number of the information symbols is calculated from the block size value provided through the input port and the number of check symbols. The number of check symbols can be either constant and defined in the GUI or variable and given through the

input port `numchks`, depending on the parameter `Variable check symbols`. Once block size value, number of check symbols and number of information symbols are known then the core operates in the same way as when block size was constant.

Variable Check Symbols

This option can be used when there is requirement for variable error correction capability. One example of this type of application is IEEE 802.16-2004 WirelessMAN-SC. In this option the number of check symbols value is provided dynamically through the input port `numchks`. Dynamically `Variable check symbols` option is available only for the Error Decoding mode.

Puncturing Pattern File Format

This file contains the pre-defined puncture patterns that are selected using the `puncsel` signal. This file is necessary when `Decoding mode` is selected as Puncturing. This file should have the “.cfg” extension. The RS Decoder IP core GUI requires this file during core configuration. The format and a sample of this file is given below, followed by a brief explanation.

Format:

```
<n1> <n2> <n3> ...<nN>  First line lists the number of punctured symbols in each pattern. N is the total
                          number of puncture patterns. There should be N lines following this line, one for
                          each pattern

<p1> <p2> .... <pn1>     These are the actual puncture patterns. Each line contains one pattern. p1, p2,
<p1> <p2> ... <pn2>     etc. in each pattern are the positions of the punctured symbols from the end of the
...                       block for that pattern.
...
<p1> <p2> ... <pnN>
```

The number of punctured symbols in the first line, `<ni>`, can be set to zero to indicate there is no puncturing for that pattern.

Sample content:

```
0 4 8 12
0
0 1 2 3
0 1 2 3 4 5 6 7
0 1 2 3 4 5 6 7 8 9 10 11
```

In the sample content above, the first line contains the number of punctured symbols for each puncture pattern. 0 indicates that for the first puncture pattern there are 0 symbols punctured. 4 indicates that for the second puncture pattern there are 4 symbols punctured. 8 indicates that for the third puncture pattern there are 8 symbols punctured. 12 indicates that for the fourth puncture pattern there are 12 symbols punctured. The first puncture pattern is defined on line 2 and the second puncture pattern is defined on line 3, and so on. Each puncture pattern lists the position of the punctured symbol starting from the end of the block. This means that the last symbol is numbered as 0 and the next to the last symbol is numbered as 1, and so on. Therefore, for the second puncture pattern defined on line 3, number 0 indicates the last symbol in the block is punctured and number 1 indicates the second from the last symbol is punctured. The values are entered in decimal format.

Default Field Polynomials

The default field polynomials used in the GUI for different symbol widths are given in [Table 2-1](#). The user, however, can enter any valid polynomial.

Table 2-1. Default Field Polynomials

Symbol Width	Default Field Polynomial	Decimal Value
3	$x^3 + x + 1$	11
4	$x^4 + x + 1$	19
5	$x^5 + x^2 + 1$	37
6	$x^6 + x + 1$	67
7	$x^7 + x^3 + 1$	137
8	$x^8 + x^4 + x^3 + x^2 + 1$	285
9	$x^9 + x^4 + 1$	529
10	$x^{10} + x^3 + 1$	1033
11	$x^{11} + x^2 + 1$	2053
12	$x^{12} + x^6 + x^4 + x + 1$	4179

Signal Descriptions

Table 2-2 shows the definitions of the interface signals available with the RS Decoder IP Core.

Table 2-2. Interface Signal Descriptions

Port	Bits	I/O	Description
All Configurations			
clk	1	I	System clock. This is the reference clock for input and output data.
rstn	1	I	System wide asynchronous active-low reset signal.
ibstart	1	I	Indicates that the data on <code>din</code> is the first information symbol of a new codeword.
din	3 - 12	I	Input data port. The <code>wsymb</code> parameter defines the port width of this signal.
dout	3 - 12	O	Output data port. The <code>wsymb</code> parameter defines the port width of this signal.
obstart	1	O	Output block start. Indicates the first output data of the codeword on the <code>dout</code> port.
obend	1	O	Output block end. Indicates the last output data of the codeword on the <code>dout</code> port.
outvalid	1	O	Output data valid. Indicates valid data is present on <code>dout</code> .
errfnd	1	O	Error found indicator. Asserted at the same time <code>obend</code> is asserted if the block has at least one symbol in error.
rfi	1	O	Ready for input. Indicates the decoder is ready to receive input data. Typically, this signal is high when the core is ready to read input symbols. This signal is low when the decoder is busy processing a previous block of data and cannot accept new block of data.
For Variable Check Symbols (When the Parameter <code>variable check symbols</code> is Yes)			
rfib	1	O	Ready for input block. Indicates that the decoder is ready to receive the first information symbol in the block.
numchks	2 - 9	I	This port is used to provide the variable number of check symbols value. The width of this port is defined as the number of bits required to represent the <code>Max. number of check symbols</code> parameter value provided by the user. The width of this port is defined as follows: $\text{ceil}(\log_2(\text{Max. number of check symbols}))$. The value at this port is read only when <code>ibstart</code> is high. The operator <code>ceil()</code> stands for the next higher integer.
For Variable Block Size Type Only (When the Parameter <code>variable block size</code> is "Yes")			
blocksize	3 - 12	I	Variable block size value. The value at this port is read only when <code>ibstart</code> is high. The <code>wsymb</code> parameter defines the port width of this signal.

Table 2-2. Interface Signal Descriptions (Continued)

Port	Bits	I/O	Description
For Puncturing Mode (when Decoding mode is "Puncturing" and Number of puncture patterns is More than 1)			
puncsel	1 - 8	I	Puncture pattern select signal. The value on this port selects the puncturing pattern from the number of predefined patterns for the current block of data. The width of this port is defined as $\text{ceil}(\log_2(\text{Number of puncture patterns}))$. The value at this port is read only when <code>ibstart</code> is high.
For Erasure mode			
ers	1	I	Erasure. Asserted to indicate the input data symbol at the <code>din</code> port is erased.
Optional I/Os			
ce	1	O	Clock enable. While this is de-asserted, the decoder will ignore all other synchronous inputs and maintain its current state.
sr	1	O	Synchronous reset. Asserted for at least one symbol duration in order to reinitialize the decoder state. Input data symbols sampled before <code>sr</code> is asserted are not given at the output.
ddel	1	O	Original uncorrected data output. A delayed copy of the input data block. Data is presented on <code>ddel</code> concurrently with the decoded block on <code>dout</code> . The <code>wsymb</code> parameter defines the port width of this signal.
errcnt	1-8	O	Error Counter. Provides the number of corrected errors in the most recent output block. The bus width <code>errwidth</code> is equal to the number of bits required to represent the maximum possible number of correctable errors, as given in the following equation: When <code>Block size type</code> is <code>Constant</code> , <code>errwidth</code> is defined as $\text{errwidth} = \text{ciel}(\log_2((n-k+1)/2))$ when Error Decoding mode is selected. $\text{errwidth} = \text{ciel}(\log_2(n-k-0.5))$ when Erasure or Puncturing Decoding mode is selected. When <code>Block size type</code> is <code>Variable</code> and <code>Variable check symbols</code> is <code>No</code> , <code>errwidth</code> is defined as $\text{errwidth} = \text{ciel}(\log_2((\text{Number of check symbols}+1)/2))$ when Error Decoding mode is selected. $\text{errwidth} = \text{ciel}(\log_2(\text{Number of check symbols}-0.5))$ when Erasure or Puncturing Decoding mode is selected. When <code>Variable check symbols</code> is <code>Yes</code> , <code>errwidth</code> is defined as $\text{errwidth} = \text{ciel}(\log_2((\text{Max. number of check symbols}+1)/2))$ The operator <code>ciel()</code> stands for the next higher integer.
erscnt	1-8	O	Erasure Counter. Provides a count of the number of erasures fed into the decoder in the most recent input data block. The bus width <code>erswidth</code> is equal to the number of bits required to represent the maximum possible number of correctable erasures, as given in the following equation: When <code>Block size type</code> is <code>Constant</code> , <code>erswidth</code> is defined as $\text{erswidth} = \text{ciel}(\log_2(n-k-1.5))$. When <code>Block size type</code> is <code>Variable</code> , <code>erswidth</code> is defined as $\text{erswidth} = \text{ciel}(\log_2(\text{Number of check symbols} - 1.5))$ The operator <code>ciel()</code> stands for the next higher integer.
fail	1	O	Decoding failure indicator. Asserted at the same time <code>obend</code> is asserted to indicate that the block has more errors than the decoder can correct.

Timing Specifications

The decoder receives the data in blocks. The assertion of signal `ibstart` indicates the first symbol of the new block of data at the input of the decoder. The `ibstart` signal should be asserted only during the first clock cycle of a data block. The `ibstart` signal should not be re-asserted until the decoder is ready to receive the next block of data as indicated by `rrib` going high. The signal `rrib` can be used to generate the `ibstart` signal. If a new block of input data has to be applied before the decoder is ready for a new block, the decoder operation should be reset using the synchronous reset signal `sr`.

Figure 2-3 shows the I/O signals' status after asynchronous reset `rstn` is asserted at the beginning of the block. The output `rri` goes high after reset to indicate the core is ready to receive input data. After `ibstart` signal is asserted, the decoder reads in the data block sequentially and starts the decoding process. When the decoded data is given at the output, `obstart` is asserted for one clock cycle during the first decoded output symbol. The output `obend` is asserted for one clock cycle when the last decoded symbol is given at the `dout` port.

Figure 2-3. RS Decoder Normal Operation Timing Diagram

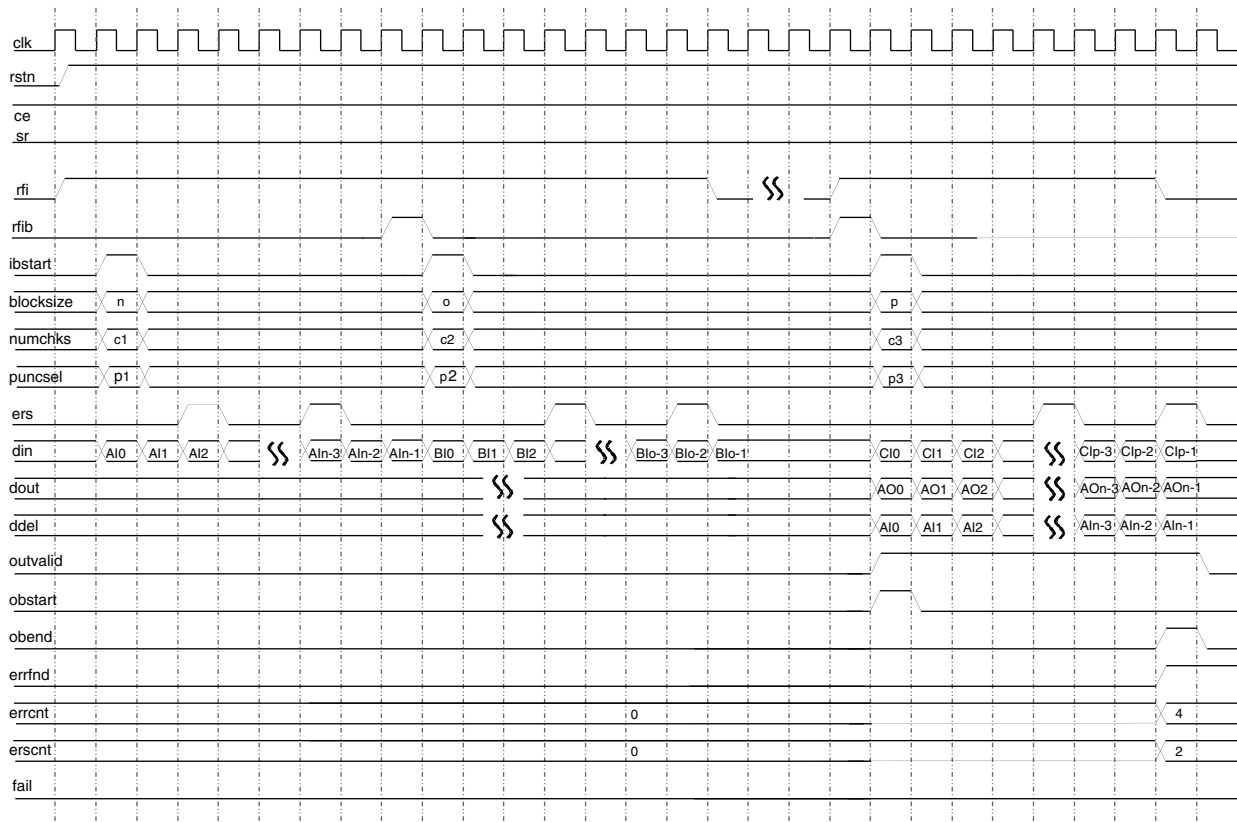


Figure 2-4 illustrates the output status when `sr` is asserted. When `sr` is asserted during the decoding process, it reinitializes the decoder state similar to power on reset state. The output data stops appearing at the output. The decoder operation can be started again by asserting the `ibstart` signal.

Figure 2-4. Effect of Synchronous Reset on the Output Data from the Decoder

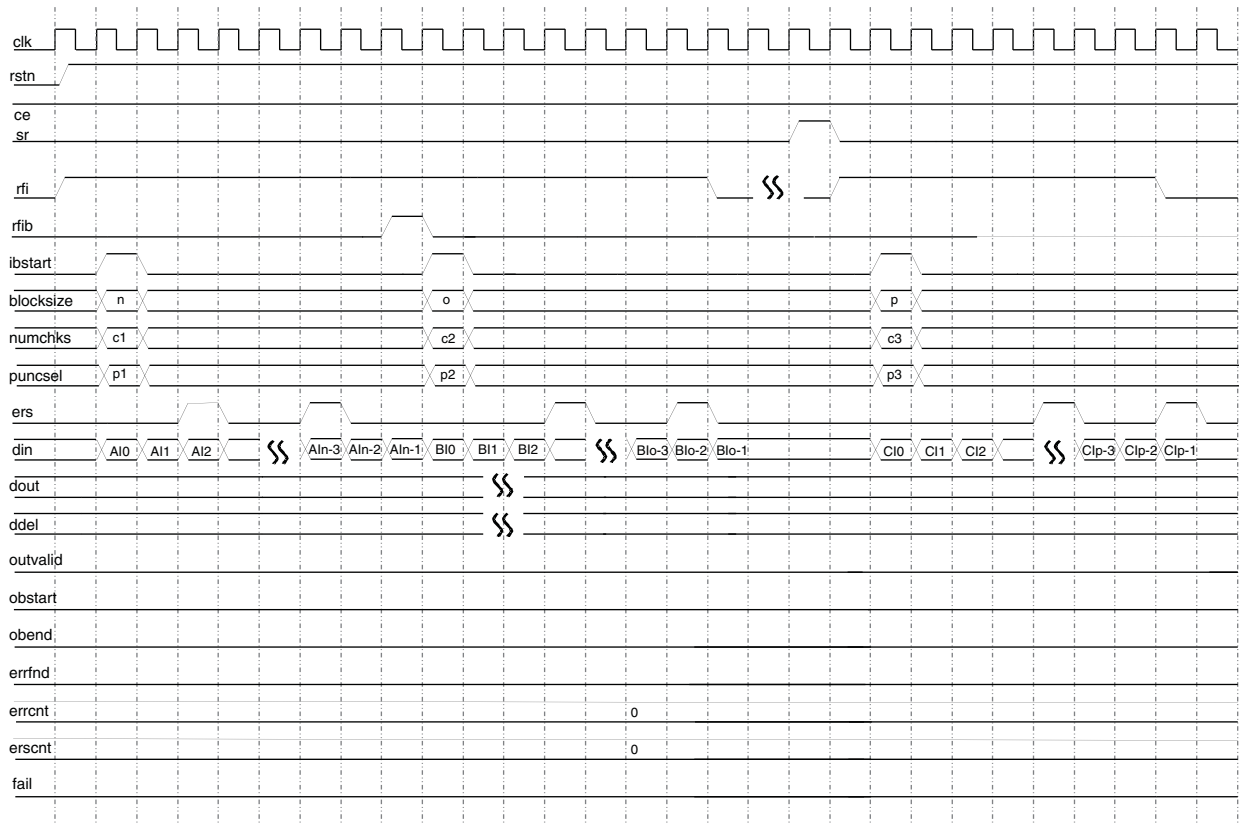
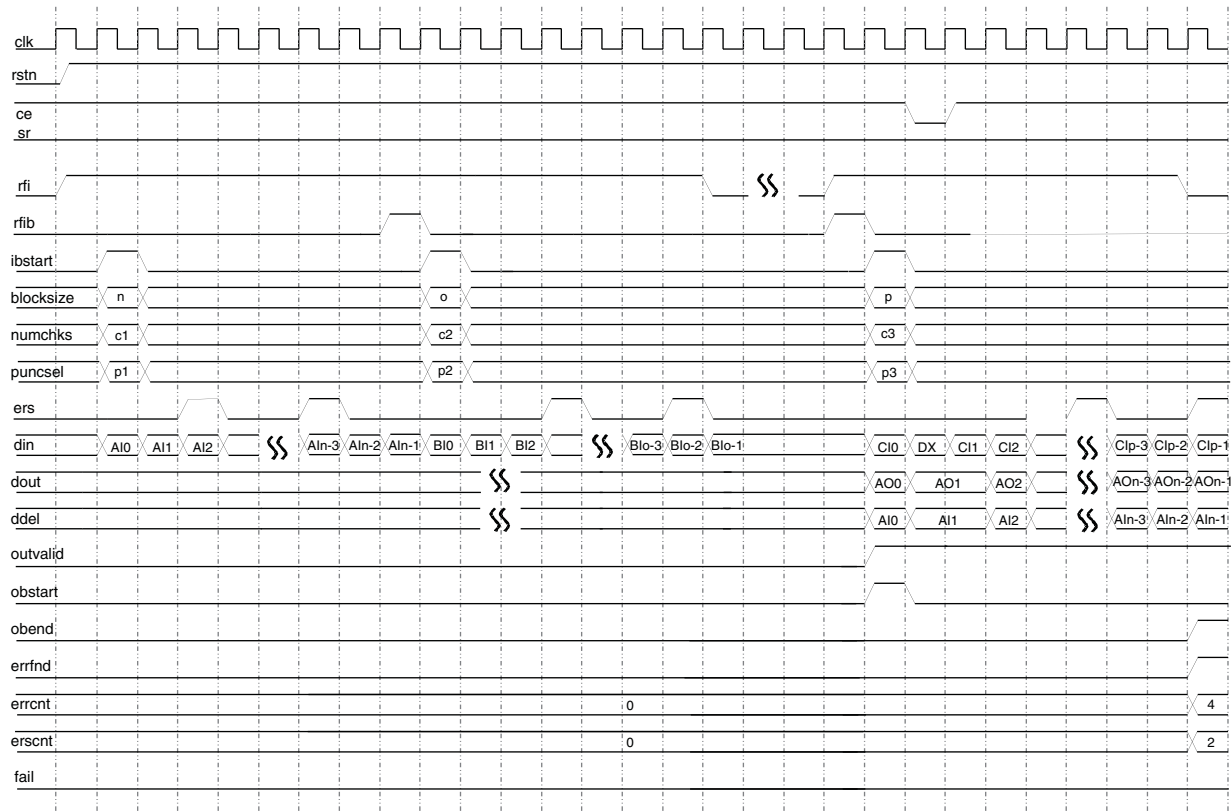


Figure 2-5 illustrates the effect of clock enable (*ce*) on the output data from RS Decoder. The decoder ignores all other synchronous inputs and remains in its current state when *ce* is de-asserted. When *ce* is asserted, the decoder goes back to the normal decoding process. In the figure, the data DX at *din* (that occurs during *ce* going low) is not recognized by the decoder.

Figure 2-5. Effect of Clock Enable on the Output Data from Decoder



Parameter Settings

The IPexpress™ tool is used to create IP and architectural modules in the Diamond and ispLEVER software. Refer to “[IP Core Generation](#)” on page 24 for a description on how to generate the IP.

The RS Decoder IP core Configuration GUI allows the user to create a custom configuration or to select one of the standard configurations: OC-192, CCSDS, DVB, ATSC, IEEE 802.16-2004 WirelessMAN-SCa/OFDM and IEEE 802.16-2004 WirelessMAN-SC. [Table 3-1](#) provides the list of user configurable parameters for the RS Decoder IP core.

Table 3-1. User Configurable Parameters

Parameter	Range/Options	Default
Core Configuration		
Core configuration	Custom, OC-192, CCSDS, DVB, ATSC, IEEE 802.16-2004 SCa, IEEE 802.16-2004 SC	OC-192
Connect reset port to GSR	Yes/No	Yes
RS Parameters		
wsymb	3 - 12 bits	8 bits
fpoly	5 - 8191	285
gstart	0 - 65535	0
rootspace	1 - 65535	1
Check Symbols		
Variable check symbols	Yes/No	No
Number of check symbols	$4 - ((2^{wsymb}) - 2)$. Maximum value is limited to 256.	16
Max. number of check symbols	$4 - ((2^{wsymb}) - 2)$. Maximum value is limited to 128.	32
Block Size Type		
Block size type	Variable} if Variable check symbols is checked. {Constant, Variable} if Variable check symbols is not checked. {Constant} if wsymb is 3 and Decoding mode is Erasure.	Constant
Block size(n)	$5 - ((2^{wsymb}) - 1)$ Default value is $((2^{wsymb}) - 1)$	255
Information symbols(k)	$1 - (n - 4)$	239
Puncturing		
Number of puncture patterns	$1 - (n - k)$ when Block size is Constant. $1 - (\text{Number of check symbols})$ when Block size is Variable.	1
Puncture pattern file	Edit field to enter the file name directly or indirectly by using the browse button.	
Decoding Mode		
Decoding mode	{Error, Erasure, Puncturing}	Error
Memory Type		
Memory type	{Automatic, Block, Distributed}	Automatic
Optional Ports		
ce	Yes/No	No
sr	Yes/No	No
errcnt	Yes/No	Yes
ddel	Yes/No	Yes
fail	Yes/No	No
erscnt	Yes/No	

RS Decoder Configuration GUI

Figure 3-1 shows the contents of the RS Decoder IP core Configuration GUI.

Figure 3-1. RS Decoder IP core Configuration GUI

Core Configuration

Selects between custom and pre-defined standard configurations. Table A-1 on page 33 defines the fixed parameter values for different standard configurations.

RS Parameters

Wsymb

This parameter sets symbol width.

Fpoly

This parameter sets the decimal value of the field polynomial. Table 2-1 on page 15 gives the default field polynomial values for different symbol widths.

Gstart

This parameter sets the offset value of the generator polynomial. The starting value for the first root of the generator polynomial is calculated as $\text{rootspace} * \text{gstart}$.

Rootspace

This parameter sets the root spacing of the generator polynomial. The value of rootspace must satisfy the following equation: $\text{GCD}(\text{rootspace}, 2^{\text{wsymb}-1}) = 1$. GCD is Greatest Common Divisor.

Check Symbols**Variable Check Symbols**

This option allows the number of check symbols to be varied through the port in addition to varying the block size dynamically. In this case, the number of check symbols is defined through the input port numchks. This option is available only when Block size type is Variable and Decoding mode is Error.

Number of Check Symbols

Constant value for the Number of check symbols in the codeword. This parameter is available when Block size type is selected as Variable and Variable check symbols is not checked.

Max. Number of Check Symbols

Maximum value for number of check symbols provided through the input port numchks. This parameter selection is available only when Variable check symbols is checked.

Block Size Type

This parameter specifies whether block size is provided as a constant value or varied through the input port. If Block size type is selected as Variable, the block size is read from the input port blocksize. Options depend on Variable check symbols.

Block Size(n)

This parameter specifies the total number of symbols in the codeword. Defined only if Block size type is Constant.

Information Symbols(k)

This parameter specifies the number of information symbols in the codeword. Defined only if Block size type is Constant. The value of k also depends on n as the maximum value of (n-k) is limited to 256

Puncturing**Number of Puncture Patterns**

This is the number of pre-defined puncture patterns that can be dynamically selected using puncsel. This parameter is enabled when Decoding mode is selected as Puncturing.

Puncture Pattern File

This is the file containing the pre-defined puncture patterns. The format of the puncture pattern file is described in the Puncture Pattern File Format section of this document. The browse button to load the puncture pattern file is enabled when Decoding mode is selected as Puncturing. The file should have a .cfg extension.

Decoding Mode

Selects between different decoding modes. The selection of this parameter depends on the application requirements.

Memory Type

Specifies the type of memory used for storing input data. If Memory type is selected as Block, then EBR memory is used. If Memory type is selected as Distributed then distributed memory is used. If Memory type is selected as Automatic then memory will be selected in a most optimized way depending on the other parameters selected.

Optional Ports**ce**

Determines whether the input port ce (clock enable) is present.

sr

Determines whether the input port sr (synchronous reset) is present.

errcnt

Determines whether the output port errcnt (error count) is present.

ddel

Determines whether the output port ddel (delayed data) is present.

fail

Determines whether the output port fail (decoding failure) is present.

erscnt

Determines whether the output port erscnt (erasure count) is present.

This chapter provides information on licensing the RS Decoder IP core, generating the core using the Diamond or ispLEVER software IPexpress tool, running functional simulation, and including the core in a top-level design. The Lattice RS Decoder IP core can be used in LatticeECP3, LatticeECP2/M, LatticeECP, LatticeSC/M, LatticeXP, and LatticeXP2 device families.

Licensing the IP Core

An IP license is required to enable full, unrestricted use of the RS Decoder IP core in a complete, top-level design. An IP license that specifies the IP core and device family is required to enable full use of the core in Lattice devices. Instructions on how to obtain licenses for Lattice IP cores are given at:

<http://www.latticesemi.com/products/intellectualproperty/aboutip/isplevercoreonlinepurchas.cfm>

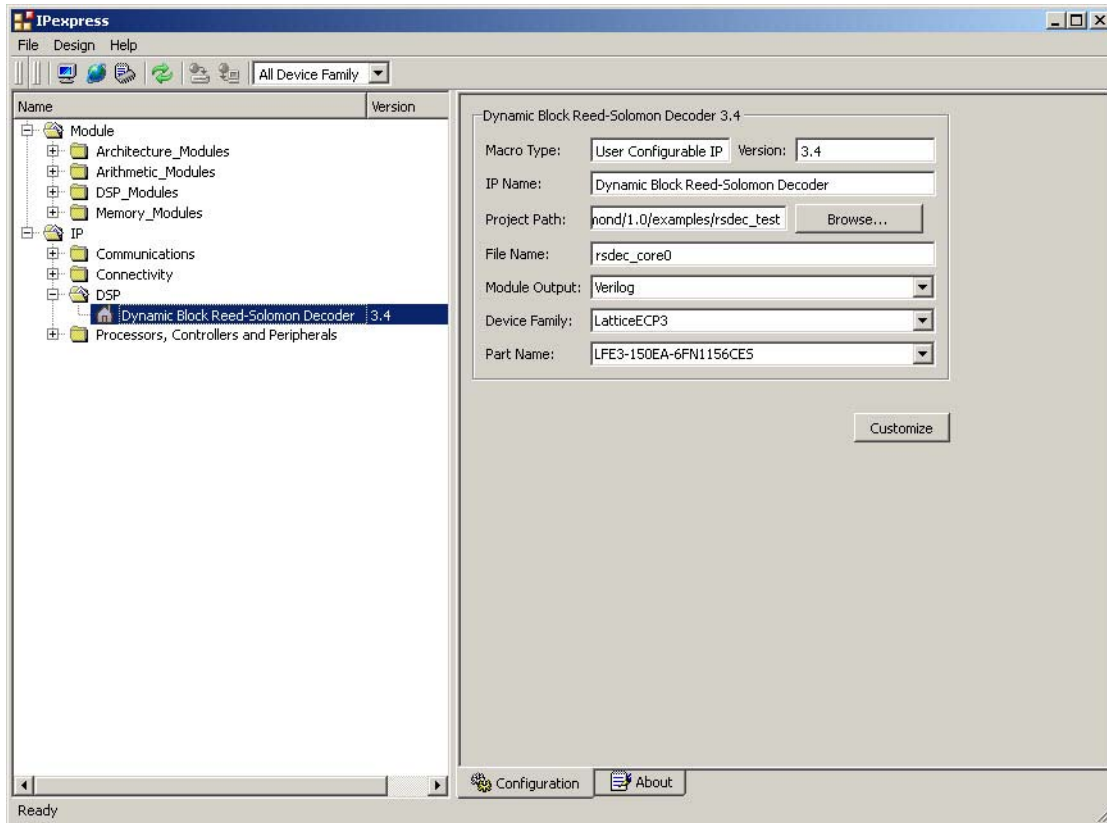
Users may download and generate the IP core and fully evaluate the core through functional simulation and implementation (synthesis, map, place and route) without an IP license. The RS Decoder IP core also supports Lattice's IP hardware evaluation capability, which makes it possible to create versions of the IP core that operate in hardware for a limited time (approximately four hours) without requiring an IP license (see [“Instantiating the Core” on page 28](#) for further details). However, a license is required to enable timing simulation, to open the design in the Diamond or ispLEVER EPIC tool, and to generate bitstreams that do not include the hardware evaluation timeout limitation.

Getting Started

The RS Decoder IP core is available for download from the Lattice IP Server using the IPexpress tool. The IP files are automatically installed using ispUPDATE technology in any customer-specified directory. After the IP core has been installed, the IP core will be available in the IPexpress GUI dialog box shown in [Figure 4-1](#).

The IPexpress tool GUI dialog box for the RS Decoder IP core is shown in [Figure 4-1](#). To generate a specific IP core configuration the user specifies:

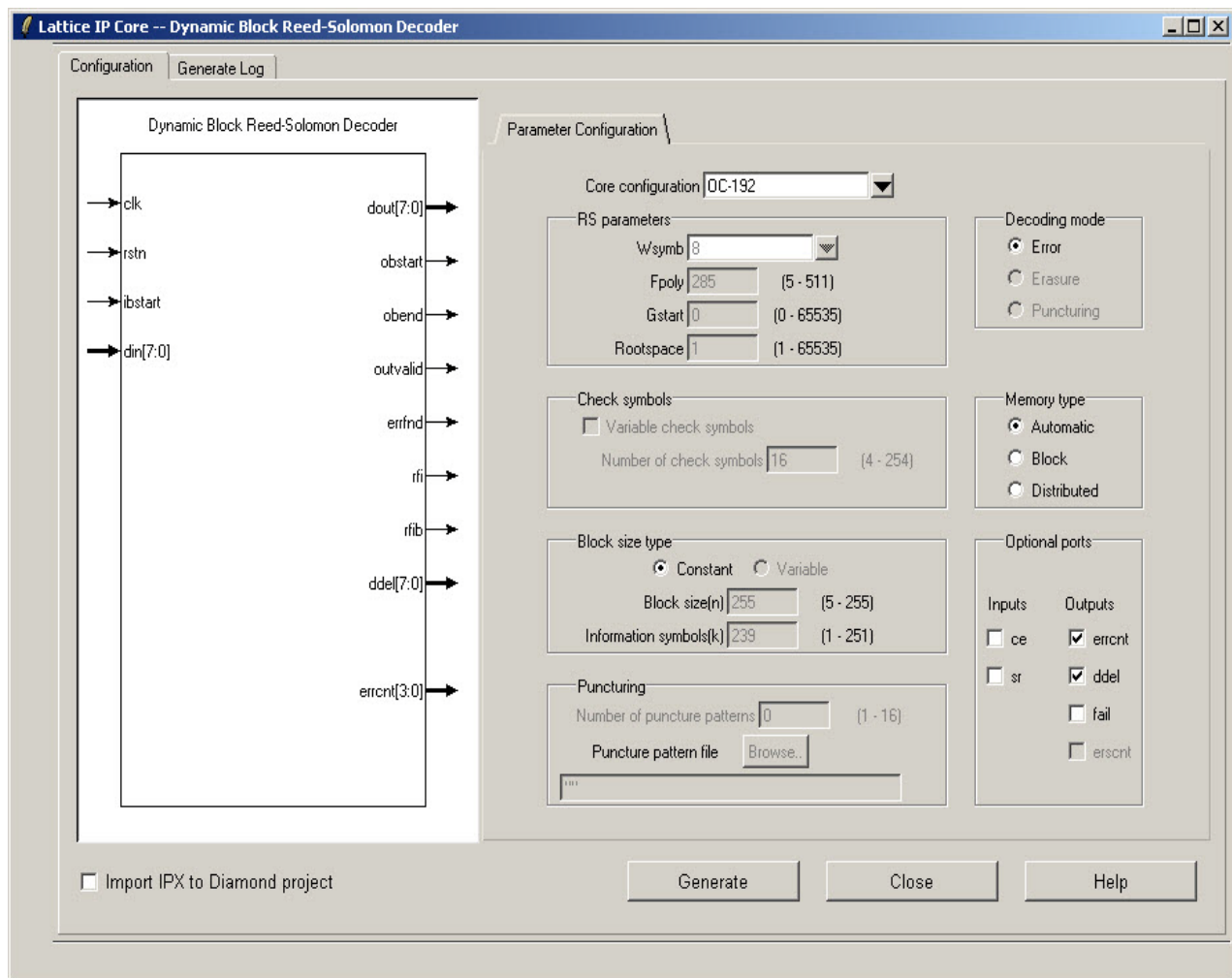
- **Project Path** – Path to the directory where the generated IP files will be located.
- **File Name** – “username” designation given to the generated IP core and corresponding folders and files.
- **(Diamond) Module Output** – Verilog or VHDL.
- **(ispLEVER) Design Entry Type** – Verilog HDL or VHDL.
- **Device Family** – Device family to which IP is to be targeted (e.g. LatticeSCM, Lattice ECP2M, LatticeECP3, etc.). Only families that support the particular IP core are listed.
- **Part Name** – Specific targeted part within the selected device family.

Figure 4-1. IPexpress Tool Dialog Box (Diamond Version)

Note that if the IPexpress tool is called from within an existing project, Project Path, Module Output (Design Entry in ispLEVER), Device Family and Part Name default to the specified project parameters. Refer to the IPexpress tool online help for further information.

To create a custom configuration, the user clicks the **Customize** button in the IPexpress tool dialog box to display the RS Decoder IP core Configuration GUI, as shown in [Figure 4-2](#). From this dialog box, the user can select the IP parameter options specific to their application. Refer to [“Parameter Settings” on page 16](#) for more information on the parameter settings.

Figure 4-2. Configuration GUI (Diamond Version)



IPexpress-Created Files and Top Level Directory Structure

When the user clicks the **Generate** button in the IP Configuration dialog box, the IP core and supporting files are generated in the specified “Project Path” directory. The directory structure of the generated files is shown in [Figure 4-3](#).

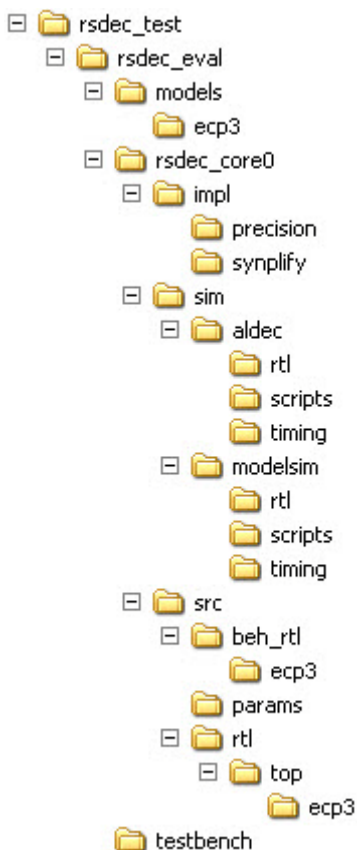
Figure 4-3. Lattice RS Decoder IP core Directory Structure

Table 4-1 provides a list of key files and directories created by the IPexpress tool and how they are used. The IPexpress tool creates several files that are used throughout the design cycle. The names of most of the created files are customized to the user's module name specified in the IPexpress tool.

Table 4-1. File List

File	Description
<username>_inst.v	This file provides an instance template for the IP.
<username>.v	This file provides the RS Decoder core for simulation.
<username>_beh.v	This file provides a behavioral simulation model for the RS Decoder core.
<username>_bb.v	This file provides the synthesis black box for the user's synthesis.
<username>.ngo	The ngo files provide the synthesized IP core.
<username>.lpc	This file contains the IPexpress tool options used to recreate or modify the core in the IPexpress tool.
<username>.ipx	The IPX file holds references to all of the elements of an IP or Module after it is generated from the IPexpress tool (Diamond version only). The file is used to bring in the appropriate files during the design implementation and analysis. It is also used to re-load parameter settings into the IP/Module generation GUI when an IP/Module is being re-generated.
<username>_top.[v,vhd]	This file provides a module which instantiates the RS Decoder core. This file can be easily modified for the user's instance of the RS Decoder core. This file is located in the <code>rsdec_eval/<username>/src/rtl/top/</code> directory.
<username>_generate.tcl	Created when GUI "Generate" button is pushed, invokes generation, may be run from command line.
<username>_generate.log	IPexpress scripts log file.
<username>_gen.log	IPexpress IP generation log file

Instantiating the Core

The generated RS Decoder IP core package includes black-box (<username>_bb.v) and instance (<username>_inst.v) templates that can be used to instantiate the core in a top-level design. An example RTL top-level reference source file that can be used as an instantiation template for the IP core is provided in \<project_dir>\rsdec_eval\<username>\src\rtl\top. Users may also use this top-level reference as the starting template for the top-level for their complete design.

Running Functional Simulation

Simulation support for the RS Decoder IP core is provided for Aldec Active-HDL (Verilog and VHDL) simulator, Mentor Graphics ModelSim simulator. The functional simulation includes a configuration-specific behavioral model of the RS Decoder IP core. The test bench sources stimulus to the core, and monitors output from the core. The generated IP core package includes the configuration-specific behavior model (<username>_beh.v) for functional simulation in the “Project Path” root directory. The simulation scripts supporting ModelSim evaluation simulation is provided in \<project_dir>\rsdec_eval\<username>\sim\modelsim\scripts. The simulation script supporting Aldec evaluation simulation is provided in

\<project_dir>\rsdec_eval\<username>\sim\aldec\scripts. Both Modelsim and Aldec simulation is supported via test bench files provided in \<project_dir>\rsdec_eval\testbench. Models required for simulation are provided in the corresponding \models folder. Users may run the Aldec evaluation simulation by doing the following:

1. Open Active-HDL.
2. Under the Tools tab, select **Execute Macro**.
3. Browse to folder \<project_dir>\rsdec_eval\<username>\sim\aldec\scripts and execute one of the "do" scripts shown.

Users may run the ModelSim evaluation simulation by doing the following:

1. Open ModelSim.
2. Under the File tab, select **Change Directory** and choose the folder
<project_dir>\rsdec_eval\<username>\sim\modelsim\scripts.
3. Under the Tools tab, select **Execute Macro** and execute the ModelSim “do” script shown.

Note: When the simulation completes, a pop-up window will appear asking “Are you sure you want to finish?” Answer **No** to analyze the results (answering **Yes** closes ModelSim).

Synthesizing and Implementing the Core in a Top-Level Design

Synthesis support for the RS Decoder IP core is provided for Mentor Graphics Precision or Synopsys Synplify. The RS Decoder IP core itself is synthesized and is provided in NGO format when the core is generated in IPexpress. Users may synthesize the core in their own top-level design by instantiating the core in their top-level as described previously and then synthesizing the entire design with either Synplify or Precision RTL Synthesis. The following text describes the evaluation implementation flow for Windows platforms. The flow for Linux and UNIX platforms is described in the Readme file included with the IP core. The top-level files <username>_top.v are provided in \<project_dir>\rsdec_eval\<username>\src\rtl\top. Push-button implementation of the reference design is supported via Diamond or ispLEVER project files, <username>.syn, located in the following directory: \<project_dir>\rsdec_eval\<username>\impl\ (synplify or precision). To use these project files using Synplify:

To use this project file in Diamond:

1. Choose **File > Open > Project**.

2. Browse to `\<project_dir>\rsdec_eval\<username>\impl\synplify (or precision)` in the Open Project dialog box.
3. Select and open `<username>.ldf`. At this point, all of the files needed to support top-level synthesis and implementation will be imported to the project.
4. Select the **Process** tab in the left-hand GUI window.
5. Implement the complete design via the standard Diamond GUI flow.

To use this project file in ispLEVER:

1. Choose **File > Open Project**.
2. Browse to `\<project_dir>\rsdec_eval\<username>\impl\synplify (or precision)` in the Open Project dialog box.
3. Select and open `<username>.syn`. At this point, all of the files needed to support top-level synthesis and implementation will be imported to the project.
4. Select the device top-level entry in the left-hand GUI window.
5. Implement the complete design via the standard ispLEVER GUI flow.

Hardware Evaluation

The RS Decoder IP core supports Lattice's IP hardware evaluation capability, which makes it possible to create versions of the IP core that operate in hardware for a limited period of time (approximately four hours) without requiring the purchase of an IP license. It may also be used to evaluate the core in hardware in user-defined designs.

Enabling Hardware Evaluation in Diamond

Choose **Project > Active Strategy > Translate Design Settings**. The hardware evaluation capability may be enabled/disabled in the Strategy dialog box. It is enabled by default.

Enabling Hardware Evaluation in ispLEVER

In the Processes for Current Source pane, right-click the **Build Database** process and choose **Properties** from the dropdown menu. The hardware evaluation capability may be enabled/disabled in the Properties dialog box. It is enabled by default.

Updating/Regenerating the IP Core

By regenerating an IP core with the IPexpress tool, you can modify any of its settings including device type, design entry method, and any of the options specific to the IP core. Regenerating can be done to modify an existing IP core or to create a new but similar one.

Regenerating an IP Core in Diamond

To regenerate an IP core in Diamond:

1. In IPexpress, click the **Regenerate** button.
2. In the Regenerate view of IPexpress, choose the IPX source file of the module or IP you wish to regenerate.
3. IPexpress shows the current settings for the module or IP in the Source box. Make your new settings in the **Target** box.

4. If you want to generate a new set of files in a new location, set the new location in the **IPX Target File** box. The base of the file name will be the base of all the new file names. The IPX Target File must end with an .ipx extension.
5. Click **Regenerate**. The module's dialog box opens showing the current option settings.
6. In the dialog box, choose the desired options. To get information about the options, click **Help**. Also, check the About tab in IPexpress for links to technical notes and user guides. IP may come with additional information. As the options change, the schematic diagram of the module changes to show the I/O and the device resources the module will need.
7. To import the module into your project, if it's not already there, select **Import IPX to Diamond Project** (not available in stand-alone mode).
8. Click **Generate**.
9. Check the Generate Log tab to check for warnings and error messages.
10. Click **Close**.

The IPexpress package file (.ipx) supported by Diamond holds references to all of the elements of the generated IP core required to support simulation, synthesis and implementation. The IP core may be included in a user's design by importing the .ipx file to the associated Diamond project. To change the option settings of a module or IP that is already in a design project, double-click the module's .ipx file in the File List view. This opens IPexpress and the module's dialog box showing the current option settings. Then go to step 6 above.

Regenerating an IP Core in ispLEVER

To regenerate an IP core in ispLEVER:

1. In the IPexpress tool, choose **Tools > Regenerate IP/Module**.
2. In the Select a Parameter File dialog box, choose the Lattice Parameter Configuration (.lpc) file of the IP core you wish to regenerate, and click **Open**.
3. The Select Target Core Version, Design Entry, and Device dialog box shows the current settings for the IP core in the Source Value box. Make your new settings in the Target Value box.
4. If you want to generate a new set of files in a new location, set the location in the LPC Target File box. The base of the .lpc file name will be the base of all the new file names. The LPC Target File must end with an .lpc extension.
5. Click **Next**. The IP core's dialog box opens showing the current option settings.
6. In the dialog box, choose desired options. To get information about the options, click **Help**. Also, check the About tab in the IPexpress tool for links to technical notes and user guides. The IP core might come with additional information. As the options change, the schematic diagram of the IP core changes to show the I/O and the device resources the IP core will need.
7. Click **Generate**.
8. Click the **Generate Log** tab to check for warnings and error messages.

This chapter contains information about Lattice Technical Support, additional references, and document revision history.

Lattice Technical Support

There are a number of ways to receive technical support.

Online Forums

The first place to look is Lattice Forums (<http://www.latticesemi.com/support/forums.cfm>). Lattice Forums contain a wealth of knowledge and are actively monitored by Lattice Applications Engineers.

Telephone Support Hotline

Receive direct technical support for all Lattice products by calling Lattice Applications from 5:30 a.m. to 6 p.m. Pacific Time.

- For USA & Canada: 1-800-LATTICE (528-8423)
- For other locations: +1 503 268 8001

In Asia, call Lattice Applications from 8:30 a.m. to 5:30 p.m. Beijing Time (CST), +0800 UTC. Chinese and English language only.

- For Asia: +86 21 52989090

E-mail Support

- techsupport@latticesemi.com
- techsupport-asia@latticesemi.com

Local Support

Contact your nearest Lattice Sales Office.

Internet

www.latticesemi.com

References

- I. S. Reed, M. T. Shih, and T. K. Truong, "VLSI design of inverse-free Berlekamp-Massey algorithm," Proc. IEEE, Part E, vol. 138, pp. 295-298, September 1991.
- S. Kwon and H. Shin, "An area-efficient VLSI architecture of a Reed-Solomon decoder/encoder for digital VCRs," IEEE Trans. Consumer Electronics, pp. 1019-1027, Nov. 1997.

LatticeEC/ECP

- [HB1000](#), *LatticeECP/EC Family Handbook*

LatticeECP2M

- [HB1003](#), *LatticeECP2M Family Handbook*

LatticeECP3

- [HB1009](#), *LatticeECP3 Family Handbook*

LatticeSC/M

- [DS1004](#), *LatticeSC/M Family Data Sheet*

LatticeXP

- [HB1001](#), *LatticeXP Family Handbook*

LatticeXP2

- [DS1009](#), *Lattice XP2 Datasheet*

Related Information

For more information regarding core usage and design verification, refer to the [Reed-Solomon Decoder IP Core User's Guide](#).

Revision History

Date	Document Version	IP Version	Change Summary
March 2006	01.0	2.0	Initial release.
August 2006	01.1	3.0	Core version 3.0: Full support of IPexpress flow, including LatticeECP/EC, LatticeECP2, LatticeSC, and LatticeXP.
January 2007	01.2	3.1	Updated LatticeECP/EC, LatticeECP2, LatticeXP and LatticeSC appendices. Added support for the LatticeECP2M FPGA family.
May 2007	01.3	3.2	Added support for LatticeXP2 FPGA family.
May 2009	01.4	3.3	Added support for LatticeECP3 FPGA family.
			Added VHDL flow.
			Added Aldec Active-HDL simulation and Linux/Solaris platform support.
July 2010	01.5	3.3	Divided document into chapters. Added table of contents.
			Added Quick Facts tables in Chapter 1 , "Introduction."
			Added new content in Chapter 4 , "IP Core Generation."
December 2010	01.6	3.4	Added support for Diamond software throughout.

Resource Utilization

This appendix gives resource utilization information for Lattice FPGAs using the RS Decoder IP core.

IPexpress is the Lattice IP configuration utility, and is included as a standard feature of the Diamond and ispLEVER design tools. Details regarding the usage of IPexpress can be found in the IPexpress and Diamond or ispLEVER help system. For more information on the Diamond or ispLEVER design tools, visit the Lattice web site at: www.latticesemi.com/software.

Table A-1 gives the parameter settings for the standard configurations shown in Table A-2 through Table A-8.

Table A-1. Parameter Settings for Standard Configurations

Parameter Name	Core Configuration					
	OC-192 (config1)	CCSDS (config2)	DVB (config3)	ATSC (config4)	IEEE 802.16-2004 WirelessMA-SCa or WirelessMA-OFDM (config5)	IEEE 802.16-2004 WirelessMAN-SC (config6)
RS Parameters						
wsymb	8	8	8	8	8	8
fpoly	285	391	285	285	285	285
gstart	0	112	0	0	0	0
rootSPACE	1	11	1	1	1	1
Check Symbols						
Variable check symbols	No	No	No	No	No	Yes
Number of check symbols	NA	NA	NA	NA	16	NA
Max. number of check symbols	NA	NA	NA	NA	NA	32
Block Size Type						
Block size type	Constant	Constant	Constant	Constant	Variable	Variable
Block size(n)	255	255	204	207	NA	NA
InfoSymbols(k)	239	223	188	187	NA	NA
Puncturing						
Number of puncture patterns	NA	NA	NA	NA	4	NA
Decoding Mode						
Decoding mode	Error	Error	Error	Error	Puncturing	Error
Memory Type						
Memory type	Automatic	Automatic	Automatic	Automatic	Automatic	Automatic
Optional Input/Output Ports						
ce	No	No	No	No	No	No
sr	No	No	No	No	No	No
errcnt	Yes	Yes	Yes	Yes	Yes	Yes
ddel	Yes	Yes	Yes	Yes	Yes	Yes
fail	No	No	No	No	No	No
erscnt	NA	NA	NA	NA	Yes	NA

LatticeECP and LatticeEC FPGAs

Table A-2. Performance and Resource Utilization¹

IPexpress User-Configurable Mode	Slices	LUTs	Registers	sysMEM™ EBRs	I/Os	f _{MAX} (MHz)
OC-192	588	1171	795	2	37	123
CCSDS	980	1947	1349	2	38	114
DVB	604	1196	802	2	37	124
ATSC	766	1520	969	2	37	113
IEEE 802.16-2004 WirelessMAN SCa	927	1835	1279	2	51	116
IEEE 802.16-2004 WirelessMAN SC	1044	2066	1486	2	52	104

1. Performance and utilization data are generated using an LFEC/P20E-5F672C device with Lattice Diamond 1.0 and Synplify Pro for Lattice D-2009.12L-1 software. Performance may vary when using a different software version or targeting a different device density or speed grade within the LatticeECP/EC family.

Ordering Part Number

The Ordering Part Number (OPN) for the RS Decoder core targeting LatticeECP/EC devices is RSDEC-DBLK-E2-U3.

LatticeECP2 and LatticeECP2S FPGAs

Table A-3. Performance and Resource Utilization¹

IPexpress User-Configurable Mode	Slices	LUTs	Registers	sysMEM EBRs	I/Os	f _{MAX} (MHz)
OC-192	562	1117	791	2	37	175
CCSDS	963	1917	1322	2	38	157
DVB	591	1173	792	2	37	150
ATSC	756	1500	960	2	37	166
IEEE 802.16-2004 WirelessMAN SCa	917	1818	1252	2	51	152
IEEE 802.16-2004 WirelessMAN SC	1037	2056	1493	2	52	137

1. Performance and utilization data are generated using an LFE2-50E/S-7F672C device with with Lattice Diamond 1.0 and Synplify Pro for Lattice D-2009.12L-1 software. Performance may vary when using a different software version or targeting a different device density or speed grade within the LatticeECP2/S family.

Ordering Part Number

The Ordering Part Number (OPN) for the RS Decoder core targeting LatticeECP2/S devices is RSDEC-DBLK-P2-U3.

LatticeECP2M and LatticeECP2MS FPGAs

Table A-4. Performance and Resource Utilization¹

IPexpress User-Configurable Mode	Slices	LUTs	Registers	sysMEM EBRs	I/Os	f _{MAX} (MHz)
OC-192	562	1117	791	2	37	169
CCSDS	963	1917	1322	2	38	163
DVB	591	1173	792	2	37	178
ATSC	756	1500	960	2	37	160
IEEE 802.16-2004 WirelessMAN SCa	917	1818	1252	3	51	151
IEEE 802.16-2004 WirelessMAN SC	1037	2056	1493	3	52	145

1. Performance and utilization data are generated using an LFE2M35E/SE-7F484C device with with Lattice Diamond 1.0 and Synplify Pro for Lattice D-2009.12L-1 software. Performance may vary when using a different software version or targeting a different device density or speed grade within the LatticeECP2M/S family.

Ordering Part Number

The Ordering Part Number (OPN) for the RS Decoder core targeting LatticeECP2M/S devices is RSDEC-DBLK-PM-U3.

LatticeECP3 FPGAs

Table A-5. Performance and Resource Utilization¹

IPexpress User-Configurable Mode	Slices	LUTs	Registers	sysMEM EBRs	I/Os	f _{MAX} (MHz)
OC-192	564	1062	791	2	37	148
CCSDS	990	1884	1322	2	38	149
DVB	591	1123	792	2	37	156
ATSC	776	1476	960	2	37	144
IEEE 802.16-2004 WirelessMAN SCa	912	1746	1252	2	51	145
IEEE 802.16-2004 WirelessMAN SC	1067	2031	1493	2	52	142

1. Performance and utilization data are generated using an LFE3-95E-8FN672CES device with with Lattice Diamond 1.0 and Synplify Pro for Lattice D-2009.12L-1 software. Performance may vary when using a different software version or targeting a different device density or speed grade within the LatticeECP3 family.

Ordering Part Number

The Ordering Part Number (OPN) for the RS Decoder core targeting LatticeECP3 devices is RSDEC-DBLK-P3-U3.

LatticeXP FPGAs

Table A-6. Performance and Resource Utilization¹

IPexpress User-Configurable Mode	Slices	LUTs	Registers	sysMEM EBRs	I/Os	f _{MAX} (MHz)
OC-192	588	1171	795	2	37	110
CCSDS	980	1947	1349	2	38	108
DVB	604	1196	802	2	37	111
ATSC	766	1520	969	2	37	103
IEEE 802.16-2004 WirelessMAN SCa	928	1837	1279	2	51	109
IEEE 802.16-2004 WirelessMAN SC	1044	2066	1486	2	52	85

1. Performance and utilization data are generated using an LFXP20E-5F484C device with with Lattice Diamond 1.0 and Synplify Pro for Lattice D-2009.12L-1 software. Performance may vary when using a different software version or targeting a different device density or speed grade within the LatticeXP family.

Ordering Part Number

The Ordering Part Number (OPN) for the RS Decoder core targeting LatticeXP devices is RSDEC-DBLK-XP-U3.

LatticeXP2 FPGAs

Table A-7. Performance and Resource Utilization¹

IPexpress User-Configurable Mode	Slices	LUTs	Registers	sysMEM EBRs	I/Os	f _{MAX} (MHz)
OC-192	562	1117	791	2	37	140
CCSDS	963	1917	1322	2	38	128
DVB	591	1173	792	2	37	157
ATSC	756	1500	960	2	37	128
IEEE 802.16-2004 WirelessMAN SCa	917	1818	1252	2	51	126
IEEE 802.16-2004 WirelessMAN SC	1037	2056	1493	2	52	127

1. Performance and utilization data are generated using an LFXP2-30E-7F484C device with with Lattice Diamond 1.0 and Synplify Pro for Lattice D-2009.12L-1 software. Performance may vary when using a different software version or targeting a different device density or speed grade within the LatticeXP2 family.

Ordering Part Number

The Ordering Part Number (OPN) for the RS Decoder core targeting LatticeXP2 devices is RSDEC-DBLK-X2-U3.

LatticeSC and LatticeSCM FPGAs

Table A-8. Performance and Resource Utilization¹

IPexpress User-Configurable Mode	Slices	LUTs	Registers	sysMEM EBRs	I/Os	f _{MAX} (MHz)
OC-192	591	1113	803	2	37	267
CCSDS	1033	1958	1348	2	38	245
DVB	642	1219	804	2	37	287
ATSC	804	1537	970	2	37	253
IEEE 802.16-2004 WirelessMAN SCa	965	1833	1276	2	51	240
IEEE 802.16-2004 WirelessMAN SC	1107	2101	1501	2	52	238

1. Performance and utilization data are generated using an LFSC/M3GA25E-7F900C device with with Lattice Diamond 1.0 and Synplify Pro for Lattice D-2009.12L-1 software. Performance may vary when using a different software version or targeting a different device density or speed grade within the LatticeSC/M family.

Ordering Part Number

The Ordering Part Number (OPN) for the RS Decoder core targeting LatticeSC/M devices is RSDEC-DBLK-SC-U3.



Компания «ЭлектроПласт» предлагает заключение долгосрочных отношений при поставках импортных электронных компонентов на взаимовыгодных условиях!

Наши преимущества:

- Оперативные поставки широкого спектра электронных компонентов отечественного и импортного производства напрямую от производителей и с крупнейших мировых складов;
- Поставка более 17-ти миллионов наименований электронных компонентов;
- Поставка сложных, дефицитных, либо снятых с производства позиций;
- Оперативные сроки поставки под заказ (от 5 рабочих дней);
- Экспресс доставка в любую точку России;
- Техническая поддержка проекта, помощь в подборе аналогов, поставка прототипов;
- Система менеджмента качества сертифицирована по Международному стандарту ISO 9001;
- Лицензия ФСБ на осуществление работ с использованием сведений, составляющих государственную тайну;
- Поставка специализированных компонентов (Xilinx, Altera, Analog Devices, Intersil, Interpoint, Microsemi, Aeroflex, Peregrine, Syfer, Eurofarad, Texas Instrument, Miteq, Cobham, E2V, MA-COM, Hittite, Mini-Circuits, General Dynamics и др.);

Помимо этого, одним из направлений компании «ЭлектроПласт» является направление «Источники питания». Мы предлагаем Вам помощь Конструкторского отдела:

- Подбор оптимального решения, техническое обоснование при выборе компонента;
- Подбор аналогов;
- Консультации по применению компонента;
- Поставка образцов и прототипов;
- Техническая поддержка проекта;
- Защита от снятия компонента с производства.



Как с нами связаться

Телефон: 8 (812) 309 58 32 (многоканальный)

Факс: 8 (812) 320-02-42

Электронная почта: org@eplast1.ru

Адрес: 198099, г. Санкт-Петербург, ул. Калинина, дом 2, корпус 4, литера А.