

POWR-SPEED® Fuse

PSR SERIES HIGH-SPEED SQUARE BODY

Semiconductor Fuses • Flush End • 40 A–2000 A



Description

Littelfuse PSR series high-speed square body fuses are specially designed for protection of power semiconductor devices such as diodes, triacs, IGBTs, SCRs, MOSFETs, and other solid state devices that are typically designed into power conversion and power conditioning equipment. Variable frequency drives, inverters, UPS, rectifiers, and soft-starters are examples of typical equipment designed with sensitive power semiconductor devices that cannot withstand any line surge or overcurrent conditions and require high-speed protection.

Littelfuse POWR-SPEED PSR series products offer optimized circuit protection at the extremely fast speed required to protect modern day power conversion devices. Such products are commonly found in numerous applications including pulp and paper industries, cranes and heavy-lifting equipment, processing industries, wastewater treatment plants, and various large factories and MRO facilities.

Features/Benefits

- Best in class dc performance
- Extremely current limiting
- Superior cycling capability
- Global certification cURus, CCC*
- Direct bus-bar mount design
- Visual and optional microswitch fuse blown indication
- Low watt-loss design
- Compliance with US and Canadian requirements
- Class aR performance according to IEC60269-4

Applications

- Power conversion devices (UPS, inverter, rectifiers, drives)
- Dc systems (dc common bus, dc injection braking)
- Battery protection application (energy storage systems)
- Electric vehicle charging stations
- Heaters and power supplies

Specifications

| | |
|------------------------------|---|
| Voltage Range | Ac: 550 V–1300 V Dc: 500 V–1000 V |
| Amperage Range | 40 A–2000 A |
| Interrupting Range | Ac: 100 kA–200 kA Dc: 150 kA |
| Time Constant | 10 ms at IR |
| Microswitch | Yes |
| Mounting | Flush-end style |
| Material | Body: ceramic Contacts: plated brass |
| Approvals | UL 248-13 Recognized (File: E71611) cURus (File: E71611) CCC* |
| Compliance | UL248-13, IEC 60269-4 (Class aR) |
| Environmental | RoHS Compliant, REACH |
| Operating Temperature | -55 °C to +125 °C |
| Storage Temperature | Up to +35 °C with relative humidity <65 % |
| Country of Origin | Mexico |

Ordering Part Number



Catalog Number

| SERIES | CASE SIZE | TERMINATION | AMPERAGE | CATALOG NUMBER | ORDERING PART NUMBER |
|--------|-----------|-------------|----------|----------------|----------------------|
| PSR | 030 | FL | 0550 | PSR030FL0550 | PSR030FL0550Z |

Recommended Accessories

Microswitch: MS3H1000C (case size 30 to 33)
MS7H1500C (case size 70 to 73)

Web Resources

Download technical documents: Littelfuse.com/psr

Note: high-speed fuses are designed for fixed installations. They are not intended for use in moving vehicle applications.

*CCC Certification only for Flush End Metric Thread version

POWR-SPEED® Fuse

PSR SERIES HIGH-SPEED SQUARE BODY

Electrical Characteristics

| CASE SIZE | CATALOG NUMBER | | AMPERAGE RATING (A) | VOLTAGE RATING (V) | | | INTERRUPTING RATING | | MELTING (PRE-ARC) I ² T (A ² s) | TOTAL CLEARING I ² T (A ² s) AT RATED VOLTAGE | | WATT LOSS AT 100 % RATED CURRENT (W) | AGENCY CERTIFICATION | |
|--------------|-------------------------|-------------------------|---------------------|--------------------|-----|--------|---------------------|---------|---|---|---------|--------------------------------------|----------------------|------|
| | FLUSH END METRIC THREAD | FLUSH END INCHES THREAD | | AC | | DC | AC | DC | | AC | DC | | cURus | CCC* |
| | | | | IEC | UL | | | | | | | | | |
| 30 | PSR030FL0040 | PSR030FS0040 | 40 | 690 | 700 | 600 | 200 kA | 150 kA | 76 | 280 | 260 | 12 | • | • |
| | PSR030FL0050 | PSR030FS0050 | 50 | 690 | 700 | 600 | 200 kA | 150 kA | 110 | 598 | 384 | 15 | • | • |
| | PSR030FL0063 | PSR030FS0063 | 63 | 690 | 700 | 600 | 200 kA | 150 kA | 176 | 1023 | 640 | 20 | • | • |
| | PSR030FL0080 | PSR030FS0080 | 80 | 690 | 700 | 600 | 200 kA | 150 kA | 304 | 1728 | 1252 | 24 | • | • |
| | PSR030FL0100 | PSR030FS0100 | 100 | 690 | 700 | 600 | 200 kA | 150 kA | 437 | 2835 | 1575 | 27 | • | • |
| | PSR030FL0125 | PSR030FS0125 | 125 | 690 | 700 | 600 | 200 kA | 150 kA | 707 | 4684 | 2783 | 36 | • | • |
| | PSR030FL0160 | PSR030FS0160 | 160 | 690 | 700 | 600 | 200 kA | 150 kA | 1359 | 9114 | 5507 | 39 | • | • |
| | PSR030FL0200 | PSR030FS0200 | 200 | 690 | 700 | 600 | 200 kA | 150 kA | 3012 | 15169 | 14700 | 39 | • | • |
| | PSR030FL0250 | PSR030FS0250 | 250 | 690 | 700 | 600 | 200 kA | 150 kA | 4668 | 29952 | 20833 | 50 | • | • |
| | PSR030FL0315 | PSR030FS0315 | 315 | 690 | 700 | 600 | 200 kA | 150 kA | 7131 | 61830 | 31600 | 61 | • | • |
| | PSR030FL0350 | PSR030FS0350 | 350 | 690 | 700 | 600 | 200 kA | 150 kA | 12007 | 85320 | 49273 | 62 | • | • |
| | PSR030FL0400 | PSR030FS0400 | 400 | 690 | 700 | 600 | 200 kA | 150 kA | 16209 | 114750 | 63367 | 75 | • | • |
| | PSR030FL0450 | PSR030FS0450 | 450 | 690 | 700 | 600 | 200 kA | 150 kA | 23133 | 160110 | 93533 | 75 | • | • |
| PSR030FL0500 | PSR030FS0500 | 500 | 690 | 700 | 600 | 200 kA | 150 kA | 31429 | 225180 | 137333 | 80 | • | • | |
| PSR030FL0550 | PSR030FS0550 | 550 | 690 | 700 | 600 | 200 kA | 150 kA | 44323 | 268920 | 145400 | 78 | • | • | |
| 31 | PSR031FL0200 | PSR031FS0200 | 200 | 690 | 700 | 600 | 200 kA | 150 kA | 1965 | 17334 | 16188 | 49 | • | • |
| | PSR031FL0250 | PSR031FS0250 | 250 | 690 | 700 | 600 | 200 kA | 150 kA | 3789 | 35343 | 21080 | 52 | • | • |
| | PSR031FL0315 | PSR031FS0315 | 315 | 690 | 700 | 600 | 200 kA | 150 kA | 6862 | 59130 | 30694 | 61 | • | • |
| | PSR031FL0350 | PSR031FS0350 | 350 | 690 | 700 | 600 | 200 kA | 150 kA | 9523 | 76140 | 40996 | 63 | • | • |
| | PSR031FL0400 | PSR031FS0400 | 400 | 690 | 700 | 600 | 200 kA | 150 kA | 14770 | 124335 | 64359 | 63 | • | • |
| | PSR031FL0450 | PSR031FS0450 | 450 | 690 | 700 | 600 | 200 kA | 150 kA | 22457 | 178200 | 97444 | 68 | • | • |
| | PSR031FL0500 | PSR031FS0500 | 500 | 690 | 700 | 600 | 200 kA | 150 kA | 29751 | 251505 | 125935 | 74 | • | • |
| | PSR031FL0550 | PSR031FS0550 | 550 | 690 | 700 | 600 | 200 kA | 150 kA | 42056 | 289170 | 171845 | 79 | • | • |
| | PSR031FL0630 | PSR031FS0630 | 630 | 690 | 700 | 600 | 200 kA | 150 kA | 73513 | 507465 | 276315 | 86 | • | • |
| PSR031FL0700 | PSR031FS0700 | 700 | 690 | 700 | 600 | 200 kA | 150 kA | 98187 | 601425 | 337260 | 89 | • | • | |
| PSR031FL0800 | PSR031FS0800 | 800 | 690 | 700 | 600 | 200 kA | 150 kA | 137208 | 848880 | 502800 | 107 | • | • | |
| 32 | PSR032FL0400 | PSR032FS0400 | 400 | 690 | 700 | 600 | 200 kA | 150 kA | 11104 | 79650 | 44533 | 82 | • | • |
| | PSR032FL0450 | PSR032FS0450 | 450 | 690 | 700 | 600 | 200 kA | 150 kA | 15535 | 116100 | 65463 | 88 | • | • |
| | PSR032FL0500 | PSR032FS0500 | 500 | 690 | 700 | 600 | 200 kA | 150 kA | 21573 | 161460 | 88277 | 94 | • | • |
| | PSR032FL0550 | PSR032FS0550 | 550 | 690 | 700 | 600 | 200 kA | 150 kA | 26327 | 177660 | 107960 | 104 | • | • |
| | PSR032FL0630 | PSR032FS0630 | 630 | 690 | 700 | 600 | 200 kA | 150 kA | 34790 | 234900 | 156963 | 110 | • | • |
| | PSR032FL0700 | PSR032FS0700 | 700 | 690 | 700 | 600 | 200 kA | 150 kA | 51191 | 291870 | 209287 | 117 | • | • |
| | PSR032FL0800 | PSR032FS0800 | 800 | 690 | 700 | 600 | 200 kA | 150 kA | 60125 | 472770 | 249000 | 145 | • | • |
| | PSR032FL0900 | PSR032FS0900 | 900 | 690 | 700 | 600 | 200 kA | 150 kA | 107785 | 764100 | 404000 | 145 | • | • |
| | PSR032FL1000 | PSR032FS1000 | 1000 | 690 | 700 | 600 | 200 kA | 150 kA | 190102 | 933120 | 672333 | 146 | • | • |
| PSR032FL1100 | PSR032FS1100 | 1100 | 690 | 700 | 600 | 200 kA | 150 kA | 225379 | 1247400 | 744000 | 149 | • | • | |
| 33 | PSR033FL0450 | PSR033FS0450 | 450 | 690 | 700 | 600 | 200 kA | 150 kA | 13600 | 106380 | 58947 | 99 | • | • |
| | PSR033FL0500 | PSR033FS0500 | 500 | 690 | 700 | 600 | 200 kA | 150 kA | 16434 | 140400 | 77846 | 107 | • | • |
| | PSR033FL0550 | PSR033FS0550 | 550 | 690 | 700 | 600 | 200 kA | 150 kA | 23314 | 187650 | 100461 | 108 | • | • |
| | PSR033FL0630 | PSR033FS0630 | 630 | 690 | 700 | 600 | 200 kA | 150 kA | 38727 | 285930 | 142437 | 113 | • | • |
| | PSR033FL0700 | PSR033FS0700 | 700 | 690 | 700 | 600 | 200 kA | 150 kA | 56763 | 392580 | 209863 | 113 | • | • |
| | PSR033FL0800 | PSR033FS0800 | 800 | 690 | 700 | 600 | 200 kA | 150 kA | 84691 | 575505 | 348500 | 120 | • | • |
| | PSR033FL0900 | PSR033FS0900 | 900 | 690 | 700 | 600 | 200 kA | 150 kA | 122619 | 740340 | 451177 | 122 | • | • |
| | PSR033FL1000 | PSR033FS1000 | 1000 | 690 | 700 | 600 | 200 kA | 150 kA | 222350 | 1170450 | 787750 | 124 | • | • |
| | PSR033FL1100 | PSR033FS1100 | 1100 | 690 | 700 | 600 | 200 kA | 150 kA | 310824 | 1568700 | 821400 | 127 | • | • |
| | PSR033FL1250 | PSR033FS1250 | 1250 | 690 | 700 | 600 | 200 kA | 150 kA | 476902 | 2403000 | 1674333 | 131 | • | • |
| | PSR033FL1400 | PSR033FS1400 | 1400 | 690 | 700 | 500 | 200 kA | 150 kA | 583552 | 2920050 | 1979750 | 144 | • | • |
| | PSR033FL1500 | PSR033FS1500 | 1500 | 600 | 650 | 500 | 200 kA | 150 kA | 674538 | 2433200 | 1996733 | 163 | • | • |
| PSR033FL1600 | PSR033FS1600 | 1600 | 600 | 650 | 500 | 200 kA | 150 kA | 779948 | 2942800 | 2301633 | 182 | • | • | |
| PSR033FL1800 | PSR033FS1800 | 1800 | 600 | 650 | 500 | 200 kA | 150 kA | 952196 | 3785040 | 2724180 | 224 | • | • | |
| PSR033FL2000 | PSR033FS2000 | 2000 | 550 | 600 | 500 | 200 kA | 150 kA | 1234315 | 4131600 | 3755180 | 222 | • | • | |

*CCC Certification only on Flush End Metric Thread Version

POWR-SPEED® Fuse

PSR SERIES HIGH-SPEED SQUARE BODY

Electrical Characteristics (cont.)

| CASE SIZE | CATALOG NUMBER | | AMPERAGE RATING (A) | VOLTAGE RATING (V) | | | INTERRUPTING RATING | | MELTING (PRE-ARC) I ² T (A ² s) | TOTAL CLEARING I ² T (A ² s) AT RATED VOLTAGE | | WATT LOSS AT 100 % RATED CURRENT (W) | AGENCY CERTIFICATION | |
|--------------|-------------------------|-------------------------|---------------------|--------------------|------|--------|---------------------|--------|---|---|--------|--------------------------------------|----------------------|------|
| | FLUSH END METRIC THREAD | FLUSH END INCHES THREAD | | AC | | DC | AC | DC | | AC | DC | | cURus | CCC* |
| | | | | IEC | UL | | | | | | | | | |
| 70 | PSR070FL0050 | PSR070FS0050 | 50 | 1250 | 1300 | 1000 | 100 kA | 150 kA | 177 | 2050 | 400 | 21 | • | • |
| | PSR070FL0063 | PSR070FS0063 | 63 | 1250 | 1300 | 1000 | 100 kA | 150 kA | 273 | 3399 | 900 | 23 | • | • |
| | PSR070FL0080 | PSR070FS0080 | 80 | 1250 | 1300 | 1000 | 100 kA | 150 kA | 583 | 6732 | 2200 | 24 | • | • |
| | PSR070FL0100 | PSR070FS0100 | 100 | 1250 | 1300 | 1000 | 100 kA | 150 kA | 974 | 10996 | 3750 | 29 | • | • |
| | PSR070FL0125 | PSR070FS0125 | 125 | 1250 | 1300 | 1000 | 100 kA | 150 kA | 1352 | 13011 | 5150 | 43 | • | • |
| | PSR070FL0160 | PSR070FS0160 | 160 | 1250 | 1300 | 1000 | 100 kA | 150 kA | 2377 | 25662 | 8950 | 51 | • | • |
| | PSR070FL0200 | PSR070FS0200 | 200 | 1250 | 1300 | 1000 | 100 kA | 150 kA | 4177 | 39087 | 17267 | 61 | • | • |
| | PSR070FL0250 | PSR070FS0250 | 250 | 1250 | 1300 | 1000 | 100 kA | 150 kA | 8629 | 89790 | 36750 | 71 | • | • |
| | PSR070FL0280 | PSR070FS0280 | 280 | 1250 | 1300 | 1000 | 100 kA | 150 kA | 11844 | 113201 | 46750 | 71 | • | • |
| PSR070FL0315 | PSR070FS0315 | 315 | 1250 | 1300 | 1000 | 100 kA | 150 kA | 18162 | 142051 | 66833 | 69 | • | • | |
| 71 | PSR071FL0160 | PSR071FS0160 | 160 | 1250 | 1300 | 1000 | 100 kA | 150 kA | 2756 | 24600 | 8800 | 42 | • | • |
| | PSR071FL0200 | PSR071FS0200 | 200 | 1250 | 1300 | 1000 | 100 kA | 150 kA | 4918 | 50307 | 19050 | 52 | • | • |
| | PSR071FL0250 | PSR071FS0250 | 250 | 1250 | 1300 | 1000 | 100 kA | 150 kA | 10592 | 104427 | 43100 | 54 | • | • |
| | PSR071FL0280 | PSR071FS0280 | 280 | 1250 | 1300 | 1000 | 100 kA | 150 kA | 13763 | 131897 | 54150 | 58 | • | • |
| | PSR071FL0315 | PSR071FS0315 | 315 | 1250 | 1300 | 1000 | 100 kA | 150 kA | 20882 | 200244 | 67450 | 60 | • | • |
| | PSR071FL0350 | PSR071FS0350 | 350 | 1250 | 1300 | 1000 | 100 kA | 150 kA | 23301 | 225500 | 102500 | 71 | • | • |
| | PSR071FL0400 | PSR071FS0400 | 400 | 1250 | 1300 | 1000 | 100 kA | 150 kA | 43211 | 374986 | 185000 | 69 | • | • |
| PSR071FL0450 | PSR071FS0450 | 450 | 1250 | 1300 | 1000 | 100 kA | 150 kA | 55915 | 452394 | 241333 | 88 | • | • | |
| 72 | PSR072FL0250 | PSR072FS0250 | 250 | 1250 | 1300 | 1000 | 100 kA | 150 kA | 7737 | 72789 | 28567 | 63 | • | • |
| | PSR072FL0280 | PSR072FS0280 | 280 | 1250 | 1300 | 1000 | 100 kA | 150 kA | 10915 | 124538 | 46897 | 62 | • | • |
| | PSR072FL0315 | PSR072FS0315 | 315 | 1250 | 1300 | 1000 | 100 kA | 150 kA | 16187 | 145140 | 58867 | 67 | • | • |
| | PSR072FL0350 | PSR072FS0350 | 350 | 1250 | 1300 | 1000 | 100 kA | 150 kA | 18727 | 160447 | 69633 | 80 | • | • |
| | PSR072FL0400 | PSR072FS0400 | 400 | 1250 | 1300 | 1000 | 100 kA | 150 kA | 27112 | 243540 | 108000 | 89 | • | • |
| | PSR072FL0450 | PSR072FS0450 | 450 | 1250 | 1300 | 1000 | 100 kA | 150 kA | 35927 | 406413 | 159133 | 107 | • | • |
| | PSR072FL0500 | PSR072FS0500 | 500 | 1250 | 1300 | 1000 | 100 kA | 150 kA | 50398 | 425375 | 216333 | 115 | • | • |
| | PSR072FL0550 | PSR072FS0550 | 550 | 1250 | 1300 | 1000 | 100 kA | 150 kA | 73858 | 539833 | 271333 | 115 | • | • |
| PSR072FL0630 | PSR072FS0630 | 630 | 1250 | 1300 | 1000 | 100 kA | 150 kA | 126126 | 942180 | 436000 | 119 | • | • | |
| 73 | PSR073FL0315 | PSR073FS0315 | 315 | 1250 | 1300 | 1000 | 100 kA | 150 kA | 10245 | 106600 | 38650 | 88 | • | • |
| | PSR073FL0350 | PSR073FS0350 | 350 | 1250 | 1300 | 1000 | 100 kA | 150 kA | 13586 | 159627 | 57467 | 96 | • | • |
| | PSR073FL0400 | PSR073FS0400 | 400 | 1250 | 1300 | 1000 | 100 kA | 150 kA | 19797 | 211273 | 86800 | 124 | • | • |
| | PSR073FL0450 | PSR073FS0450 | 450 | 1250 | 1300 | 1000 | 100 kA | 150 kA | 29834 | 279073 | 114333 | 122 | • | • |
| | PSR073FL0500 | PSR073FS0500 | 500 | 1250 | 1300 | 1000 | 100 kA | 150 kA | 42751 | 416437 | 184500 | 121 | • | • |
| | PSR073FL0550 | PSR073FS0550 | 550 | 1250 | 1300 | 1000 | 100 kA | 150 kA | 55513 | 491713 | 224500 | 130 | • | • |
| | PSR073FL0630 | PSR073FS0630 | 630 | 1250 | 1300 | 1000 | 100 kA | 150 kA | 94649 | 804338 | 377500 | 136 | • | • |
| PSR073FL0700 | PSR073FS0700 | 700 | 1250 | 1300 | 1000 | 100 kA | 150 kA | 158097 | 1170960 | 575667 | 135 | • | • | |

*CCC Certification only on Flush End Metric Thread Version

POWR-SPEED® Fuse

PSR SERIES HIGH-SPEED SQUARE BODY

Ordering Information

| CASE SIZE | FLUSH END - METRIC THREAD | | | FLUSH END - INCHES THREAD | | | BOX QUANTITY PCS/BOX |
|--------------|---------------------------|----------------------|--------------|---------------------------|----------------------|-------------|----------------------|
| | CATALOG NUMBER | ORDERING PART NUMBER | UPC | CATALOG NUMBER | ORDERING PART NUMBER | UPC | |
| 30 | PSR030FL0040 | PSR030FL0040Z | 07945820436 | PSR030FS0040 | PSR030FS0040Z | 07945820451 | 3 pcs/box |
| | PSR030FL0050 | PSR030FL0050Z | 07945820437 | PSR030FS0050 | PSR030FS0050Z | 07945820452 | 3 pcs/box |
| | PSR030FL0063 | PSR030FL0063Z | 07945820438 | PSR030FS0063 | PSR030FS0063Z | 07945820453 | 3 pcs/box |
| | PSR030FL0080 | PSR030FL0080Z | 07945820439 | PSR030FS0080 | PSR030FS0080Z | 07945820454 | 3 pcs/box |
| | PSR030FL0100 | PSR030FL0100Z | 07945820440 | PSR030FS0100 | PSR030FS0100Z | 07945820455 | 3 pcs/box |
| | PSR030FL0125 | PSR030FL0125Z | 07945820441 | PSR030FS0125 | PSR030FS0125Z | 07945820456 | 3 pcs/box |
| | PSR030FL0160 | PSR030FL0160Z | 07945820442 | PSR030FS0160 | PSR030FS0160Z | 07945820457 | 3 pcs/box |
| | PSR030FL0200 | PSR030FL0200Z | 07945820443 | PSR030FS0200 | PSR030FS0200Z | 07945820458 | 3 pcs/box |
| | PSR030FL0250 | PSR030FL0250Z | 07945820444 | PSR030FS0250 | PSR030FS0250Z | 07945820459 | 3 pcs/box |
| | PSR030FL0315 | PSR030FL0315Z | 07945820445 | PSR030FS0315 | PSR030FS0315Z | 07945820460 | 3 pcs/box |
| | PSR030FL0350 | PSR030FL0350Z | 07945820446 | PSR030FS0350 | PSR030FS0350Z | 07945820461 | 3 pcs/box |
| | PSR030FL0400 | PSR030FL0400Z | 07945820447 | PSR030FS0400 | PSR030FS0400Z | 07945820462 | 3 pcs/box |
| | PSR030FL0450 | PSR030FL0450Z | 07945820448 | PSR030FS0450 | PSR030FS0450Z | 07945820463 | 3 pcs/box |
| | PSR030FL0500 | PSR030FL0500Z | 07945820449 | PSR030FS0500 | PSR030FS0500Z | 07945820464 | 3 pcs/box |
| PSR030FL0550 | PSR030FL0550Z | 07945820450 | PSR030FS0550 | PSR030FS0550Z | 07945820465 | 3 pcs/box | |
| 31 | PSR031FL0200 | PSR031FL0200Z | 07945820466 | PSR031FS0200 | PSR031FS0200Z | 07945820477 | 3 pcs/box |
| | PSR031FL0250 | PSR031FL0250Z | 07945820467 | PSR031FS0250 | PSR031FS0250Z | 07945820478 | 3 pcs/box |
| | PSR031FL0315 | PSR031FL0315Z | 07945820468 | PSR031FS0315 | PSR031FS0315Z | 07945820479 | 3 pcs/box |
| | PSR031FL0350 | PSR031FL0350Z | 07945820469 | PSR031FS0350 | PSR031FS0350Z | 07945820480 | 3 pcs/box |
| | PSR031FL0400 | PSR031FL0400Z | 07945820470 | PSR031FS0400 | PSR031FS0400Z | 07945820481 | 3 pcs/box |
| | PSR031FL0450 | PSR031FL0450Z | 07945820471 | PSR031FS0450 | PSR031FS0450Z | 07945820482 | 3 pcs/box |
| | PSR031FL0500 | PSR031FL0500Z | 07945820472 | PSR031FS0500 | PSR031FS0500Z | 07945820483 | 3 pcs/box |
| | PSR031FL0550 | PSR031FL0550Z | 07945820473 | PSR031FS0550 | PSR031FS0550Z | 07945820484 | 3 pcs/box |
| | PSR031FL0630 | PSR031FL0630Z | 07945820474 | PSR031FS0630 | PSR031FS0630Z | 07945820485 | 3 pcs/box |
| | PSR031FL0700 | PSR031FL0700Z | 07945820475 | PSR031FS0700 | PSR031FS0700Z | 07945820486 | 3 pcs/box |
| PSR031FL0800 | PSR031FL0800Z | 07945820476 | PSR031FS0800 | PSR031FS0800Z | 07945820487 | 3 pcs/box | |
| 32 | PSR032FL0400 | PSR032FL0400Z | 07945820488 | PSR032FS0400 | PSR032FS0400Z | 07945820498 | 3 pcs/box |
| | PSR032FL0450 | PSR032FL0450Z | 07945820489 | PSR032FS0450 | PSR032FS0450Z | 07945820499 | 3 pcs/box |
| | PSR032FL0500 | PSR032FL0500Z | 07945820490 | PSR032FS0500 | PSR032FS0500Z | 07945820500 | 3 pcs/box |
| | PSR032FL0550 | PSR032FL0550Z | 07945820491 | PSR032FS0550 | PSR032FS0550Z | 07945820501 | 3 pcs/box |
| | PSR032FL0630 | PSR032FL0630Z | 07945820492 | PSR032FS0630 | PSR032FS0630Z | 07945820502 | 3 pcs/box |
| | PSR032FL0700 | PSR032FL0700Z | 07945820493 | PSR032FS0700 | PSR032FS0700Z | 07945820503 | 3 pcs/box |
| | PSR032FL0800 | PSR032FL0800Z | 07945820494 | PSR032FS0800 | PSR032FS0800Z | 07945820504 | 3 pcs/box |
| | PSR032FL0900 | PSR032FL0900Z | 07945820495 | PSR032FS0900 | PSR032FS0900Z | 07945820505 | 3 pcs/box |
| | PSR032FL1000 | PSR032FL1000Z | 07945820496 | PSR032FS1000 | PSR032FS1000Z | 07945820506 | 3 pcs/box |
| | PSR032FL1100 | PSR032FL1100Z | 07945820497 | PSR032FS1100 | PSR032FS1100Z | 07945820507 | 3 pcs/box |
| 33 | PSR033FL0450 | PSR033FL0450Z | 07945822163 | PSR033FS0450 | PSR033FS0450Z | 07945822164 | 3 pcs/box |
| | PSR033FL0500 | PSR033FL0500Z | 07945820508 | PSR033FS0500 | PSR033FS0500Z | 07945820522 | 3 pcs/box |
| | PSR033FL0550 | PSR033FL0550Z | 07945820509 | PSR033FS0550 | PSR033FS0550Z | 07945820523 | 3 pcs/box |
| | PSR033FL0630 | PSR033FL0630Z | 07945820510 | PSR033FS0630 | PSR033FS0630Z | 07945820524 | 3 pcs/box |
| | PSR033FL0700 | PSR033FL0700Z | 07945820511 | PSR033FS0700 | PSR033FS0700Z | 07945820525 | 3 pcs/box |
| | PSR033FL0800 | PSR033FL0800Z | 07945820512 | PSR033FS0800 | PSR033FS0800Z | 07945820526 | 3 pcs/box |
| | PSR033FL0900 | PSR033FL0900Z | 07945820513 | PSR033FS0900 | PSR033FS0900Z | 07945820527 | 3 pcs/box |
| | PSR033FL1000 | PSR033FL1000Z | 07945820514 | PSR033FS1000 | PSR033FS1000Z | 07945820528 | 3 pcs/box |
| | PSR033FL1100 | PSR033FL1100Z | 07945820515 | PSR033FS1100 | PSR033FS1100Z | 07945820529 | 3 pcs/box |
| | PSR033FL1250 | PSR033FL1250Z | 07945820516 | PSR033FS1250 | PSR033FS1250Z | 07945820530 | 3 pcs/box |
| | PSR033FL1400 | PSR033FL1400Z | 07945820517 | PSR033FS1400 | PSR033FS1400Z | 07945820531 | 3 pcs/box |
| | PSR033FL1500 | PSR033FL1500Z | 07945820518 | PSR033FS1500 | PSR033FS1500Z | 07945820532 | 3 pcs/box |
| | PSR033FL1600 | PSR033FL1600Z | 07945820519 | PSR033FS1600 | PSR033FS1600Z | 07945820533 | 3 pcs/box |
| | PSR033FL1800 | PSR033FL1800Z | 07945820520 | PSR033FS1800 | PSR033FS1800Z | 07945820534 | 3 pcs/box |
| PSR033FL2000 | PSR033FL2000Z | 07945820521 | PSR033FS2000 | PSR033FS2000Z | 07945820535 | 3 pcs/box | |

POWR-SPEED® Fuse

PSR SERIES HIGH-SPEED SQUARE BODY

Ordering Information (cont.)

| CASE SIZE | FLUSH END - METRIC THREAD | | | FLUSH END - INCHES THREAD | | | BOX QUANTITY PCS/BOX |
|--------------|---------------------------|----------------------|--------------|---------------------------|----------------------|-------------|----------------------|
| | CATALOG NUMBER | ORDERING PART NUMBER | UPC | CATALOG NUMBER | ORDERING PART NUMBER | UPC | |
| 70 | PSR070FL0050 | PSR070FL0050Z | 07945820536 | PSR070FS0050 | PSR070FS0050Z | 07945820546 | 2 pcs/box |
| | PSR070FL0063 | PSR070FL0063Z | 07945820537 | PSR070FS0063 | PSR070FS0063Z | 07945820547 | 2 pcs/box |
| | PSR070FL0080 | PSR070FL0080Z | 07945820538 | PSR070FS0080 | PSR070FS0080Z | 07945820548 | 2 pcs/box |
| | PSR070FL0100 | PSR070FL0100Z | 07945820539 | PSR070FS0100 | PSR070FS0100Z | 07945820549 | 2 pcs/box |
| | PSR070FL0125 | PSR070FL0125Z | 07945820540 | PSR070FS0125 | PSR070FS0125Z | 07945820550 | 2 pcs/box |
| | PSR070FL0160 | PSR070FL0160Z | 07945820541 | PSR070FS0160 | PSR070FS0160Z | 07945820551 | 2 pcs/box |
| | PSR070FL0200 | PSR070FL0200Z | 07945820542 | PSR070FS0200 | PSR070FS0200Z | 07945820552 | 2 pcs/box |
| | PSR070FL0250 | PSR070FL0250Z | 07945820543 | PSR070FS0250 | PSR070FS0250Z | 07945820553 | 2 pcs/box |
| | PSR070FL0280 | PSR070FL0280Z | 07945820544 | PSR070FS0280 | PSR070FS0280Z | 07945820554 | 2 pcs/box |
| | PSR070FL0315 | PSR070FL0315Z | 07945820545 | PSR070FS0315 | PSR070FS0315Z | 07945820555 | 2 pcs/box |
| 71 | PSR071FL0160 | PSR071FL0160Z | 07945820556 | PSR071FS0160 | PSR071FS0160Z | 07945820564 | 2 pcs/box |
| | PSR071FL0200 | PSR071FL0200Z | 07945820557 | PSR071FS0200 | PSR071FS0200Z | 07945820565 | 2 pcs/box |
| | PSR071FL0250 | PSR071FL0250Z | 07945820558 | PSR071FS0250 | PSR071FS0250Z | 07945820566 | 2 pcs/box |
| | PSR071FL0280 | PSR071FL0280Z | 07945820573 | PSR071FS0280 | PSR071FS0280Z | 07945820582 | 2 pcs/box |
| | PSR071FL0315 | PSR071FL0315Z | 07945820560 | PSR071FS0315 | PSR071FS0315Z | 07945820568 | 2 pcs/box |
| | PSR071FL0350 | PSR071FL0350Z | 07945820561 | PSR071FS0350 | PSR071FS0350Z | 07945820569 | 2 pcs/box |
| | PSR071FL0400 | PSR071FL0400Z | 07945820562 | PSR071FS0400 | PSR071FS0400Z | 07945820570 | 2 pcs/box |
| | PSR071FL0450 | PSR071FL0450Z | 07945820563 | PSR071FS0450 | PSR071FS0450Z | 07945820571 | 2 pcs/box |
| 72 | PSR072FL0250 | PSR072FL0250Z | 07945820572 | PSR072FS0250 | PSR072FS0250Z | 07945820581 | 2 pcs/box |
| | PSR072FL0280 | PSR072FL0280Z | 07945820573 | PSR072FS0280 | PSR072FS0280Z | 07945820582 | 2 pcs/box |
| | PSR072FL0315 | PSR072FL0315Z | 07945820574 | PSR072FS0315 | PSR072FS0315Z | 07945820583 | 2 pcs/box |
| | PSR072FL0350 | PSR072FL0350Z | 07945820575 | PSR072FS0350 | PSR072FS0350Z | 07945820584 | 2 pcs/box |
| | PSR072FL0400 | PSR072FL0400Z | 07945820576 | PSR072FS0400 | PSR072FS0400Z | 07945820585 | 2 pcs/box |
| | PSR072FL0450 | PSR072FL0450Z | 07945820577 | PSR072FS0450 | PSR072FS0450Z | 07945820586 | 2 pcs/box |
| | PSR072FL0500 | PSR072FL0500Z | 07945820578 | PSR072FS0500 | PSR072FS0500Z | 07945820587 | 2 pcs/box |
| | PSR072FL0550 | PSR072FL0550Z | 07945820579 | PSR072FS0550 | PSR072FS0550Z | 07945820588 | 2 pcs/box |
| 73 | PSR073FL0630 | PSR072FL0630Z | 07945820580 | PSR072FS0630 | PSR072FS0630Z | 07945820589 | 2 pcs/box |
| | PSR073FL0315 | PSR073FL0315Z | 07945820590 | PSR073FS0315 | PSR073FS0315Z | 07945820602 | 2 pcs/box |
| | PSR073FL0350 | PSR073FL0350Z | 07945820591 | PSR073FS0350 | PSR073FS0350Z | 07945820603 | 2 pcs/box |
| | PSR073FL0400 | PSR073FL0400Z | 07945820592 | PSR073FS0400 | PSR073FS0400Z | 07945820604 | 2 pcs/box |
| | PSR073FL0450 | PSR073FL0450Z | 07945820593 | PSR073FS0450 | PSR073FS0450Z | 07945820605 | 2 pcs/box |
| | PSR073FL0500 | PSR073FL0500Z | 07945820594 | PSR073FS0500 | PSR073FS0500Z | 07945820606 | 2 pcs/box |
| | PSR073FL0550 | PSR073FL0550Z | 07945820595 | PSR073FS0550 | PSR073FS0550Z | 07945820607 | 2 pcs/box |
| | PSR073FL0630 | PSR073FL0630Z | 07945820596 | PSR073FS0630 | PSR073FS0630Z | 07945820608 | 2 pcs/box |
| PSR073FL0700 | PSR073FL0700Z | 07945820597 | PSR073FS0700 | PSR073FS0700Z | 07945820609 | 2 pcs/box | |

POWR-SPEED® Fuse

PSR SERIES HIGH-SPEED SQUARE BODY

Dimensions



DIMENSIONS IN MM (IN)

| CASE SIZE | A | B | C | D | E | F | G | FL METRIC THREAD | FS INCHES THREAD | RECOMMENDED TORQUE |
|-----------|-------------|-------------|-------------|-------------|-------------|-------------|--------------|------------------|------------------|--------------------|
| 30 | 50.0 (1.97) | 43.0 (1.69) | 43.0 (1.69) | 49.0 (1.93) | 17.0 (0.67) | 47.4 (1.86) | 76.4 (3.01) | M8 x 1.25 | 5/16"–18 UNC 2B | 13–20 Nm |
| 31 | 50.0 (1.97) | 51.5 (2.03) | 51.5 (2.03) | 57.5 (2.26) | 20.0 (0.8) | 48.2 (1.90) | 84.9 (3.34) | M8 x 1.25 | 5/16"–18 UNC 2B | 13–20 Nm |
| 32 | 51.0 (2.01) | 60.0 (2.36) | 60.0 (2.36) | 66.0 (2.60) | 23.0 (0.91) | 48.8 (1.92) | 93.4 (3.68) | M10 x 1.5 | 3/8"–16 UNC 2B | 26–35 Nm |
| 33 | 51.0 (2.01) | 73.5 (2.89) | 73.5 (2.89) | 79.5 (3.13) | 30.0 (1.18) | 49.2 (1.94) | 106.9 (4.21) | M12 x 1.75 | 1/2"–13 UNC 2B | 45–55 Nm |
| 70 | 74.0 (2.91) | 43.0 (1.69) | 43.0 (1.69) | 49.0 (1.93) | 17.0 (0.67) | 71.4 (2.81) | 76.4 (3.01) | M8 x 1.25 | 5/16"–18 UNC 2B | 13–20 Nm |
| 71 | 74.0 (2.91) | 51.5 (2.03) | 51.5 (2.03) | 57.5 (2.26) | 20.0 (0.79) | 72.2 (2.84) | 84.9 (3.34) | M8 x 1.25 | 5/16"–18 UNC 2B | 13–20 Nm |
| 72 | 75.0 (2.95) | 60.0 (2.36) | 60.0 (2.36) | 66.0 (2.60) | 23.0 (0.91) | 72.8 (2.87) | 93.4 (3.68) | M10 x 1.5 | 3/8"–16 UNC 2B | 26–35 Nm |
| 73 | 75.0 (2.95) | 73.5 (2.89) | 73.5 (2.89) | 79.5 (3.13) | 30.0 (1.18) | 73.2 (2.88) | 106.9 (4.21) | M12 x 1.75 | 1/2"–13 UNC 2B | 45–55 Nm |

POWR-SPEED® Fuse

PSR SERIES HIGH-SPEED SQUARE BODY

Time Current Curve (30 Case Size)

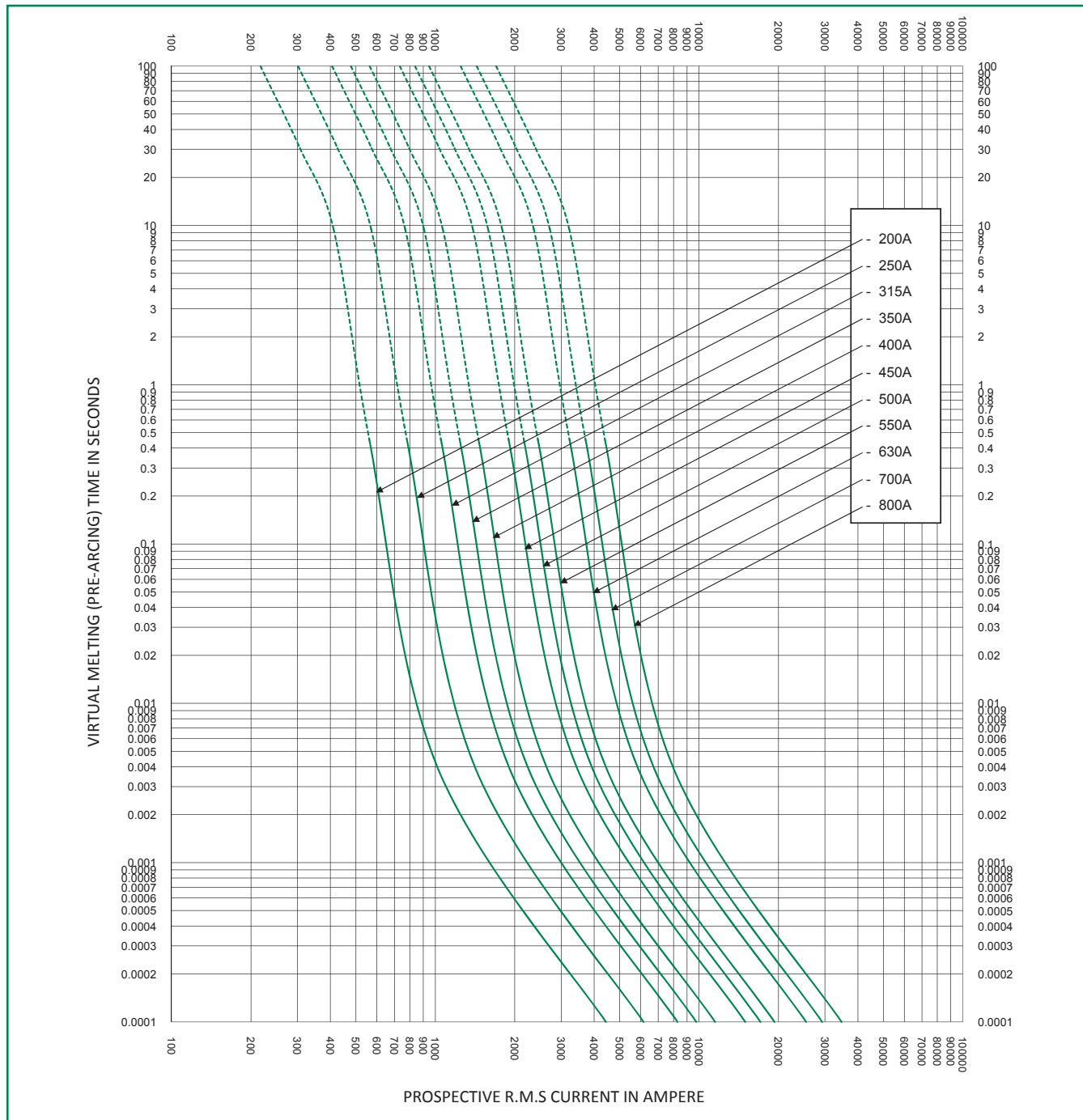


* Dc minimum breaking capacity = 9 x Rated Current of Fuse

POWR-SPEED® Fuse

PSR SERIES HIGH-SPEED SQUARE BODY

Time Current Curve (31 Case Size)



* Dc minimum breaking capacity = 9 x Rated Current of Fuse

POWR-SPEED® Fuse

PSR SERIES HIGH-SPEED SQUARE BODY

Time Current Curve (32 Case Size)



* Dc minimum breaking capacity = 9 x Rated Current of Fuse

POWR-SPEED® Fuse

PSR SERIES HIGH-SPEED SQUARE BODY

Time Current Curve (33 Case Size)



* Dc minimum breaking capacity = 9 x Rated Current of Fuse

POWR-SPEED® Fuse

PSR SERIES HIGH-SPEED SQUARE BODY

Time Current Curve (70 Case Size)



* Dc minimum breaking capacity = 9 x Rated Current of Fuse

POWR-SPEED® Fuse

PSR SERIES HIGH-SPEED SQUARE BODY

Time Current Curve (71 Case Size)



* Dc minimum breaking capacity = 9 x Rated Current of Fuse

Time Current Curve (72 Case Size)

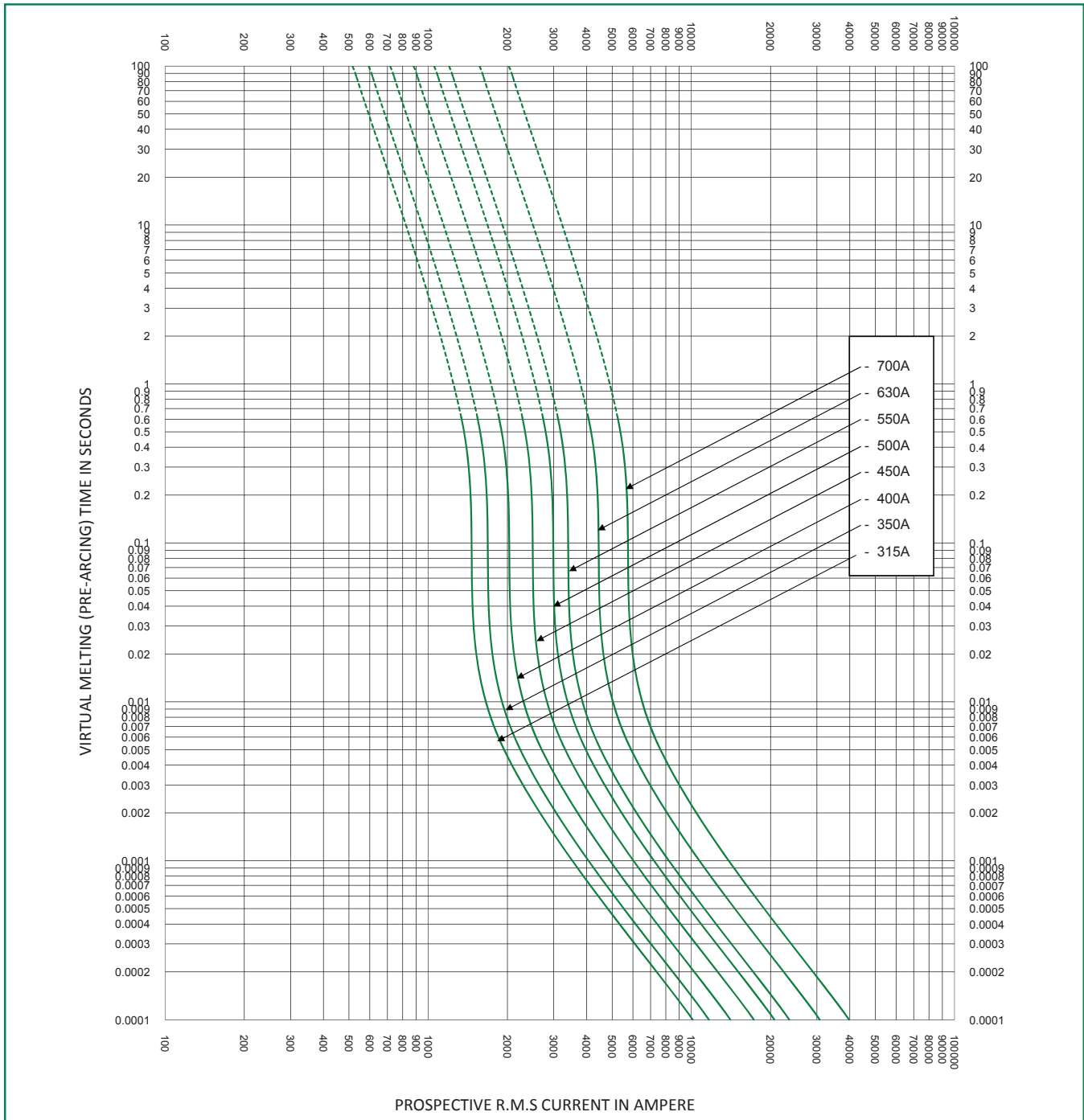


* Dc minimum breaking capacity = 9 x Rated Current of Fuse

POWR-SPEED® Fuse

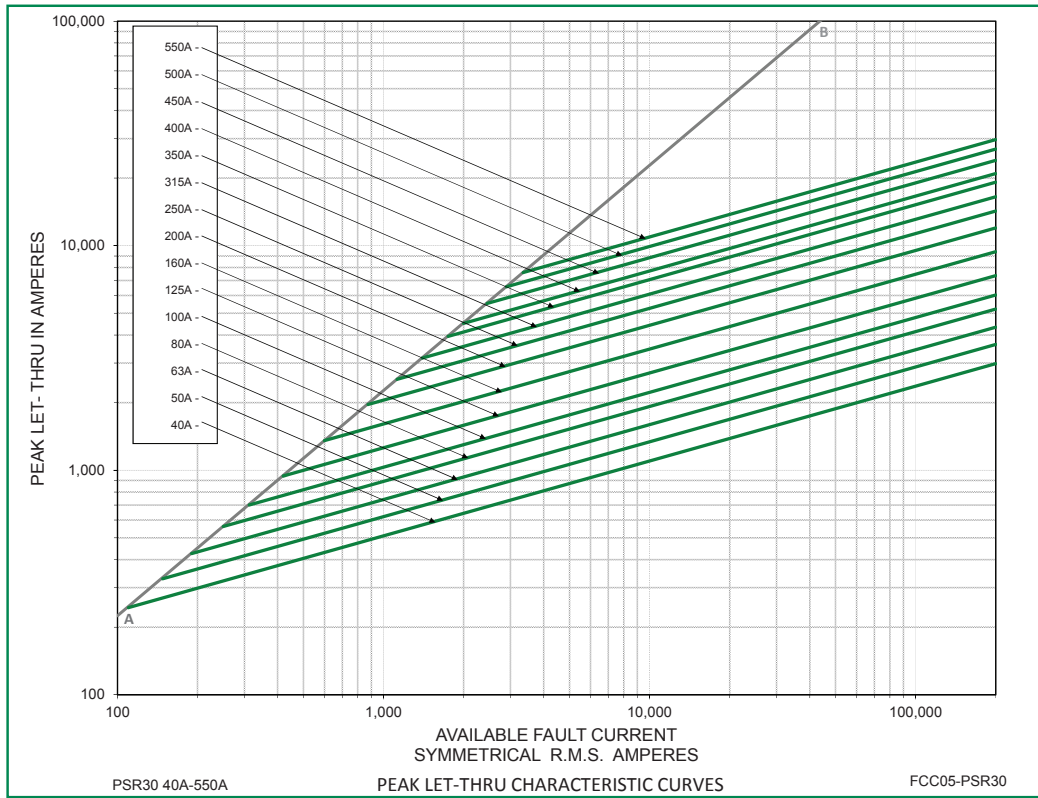
PSR SERIES HIGH-SPEED SQUARE BODY

Time Current Curve (73 Case Size)

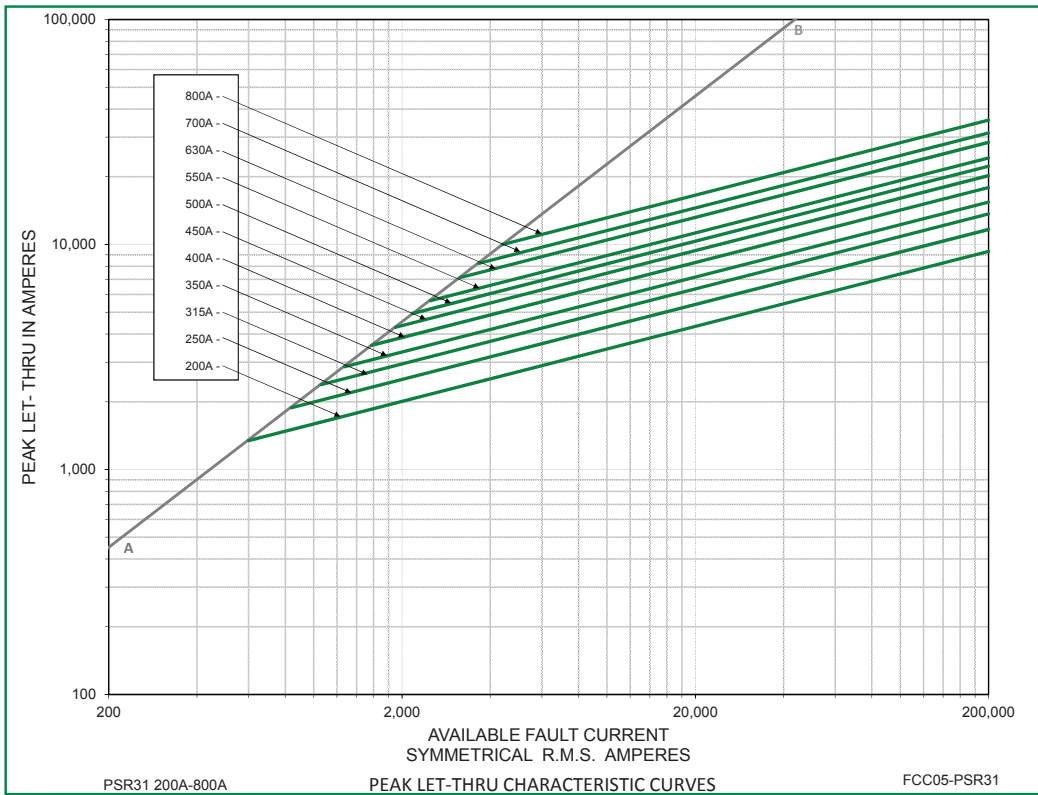


* Dc minimum breaking capacity = 9 x Rated Current of Fuse

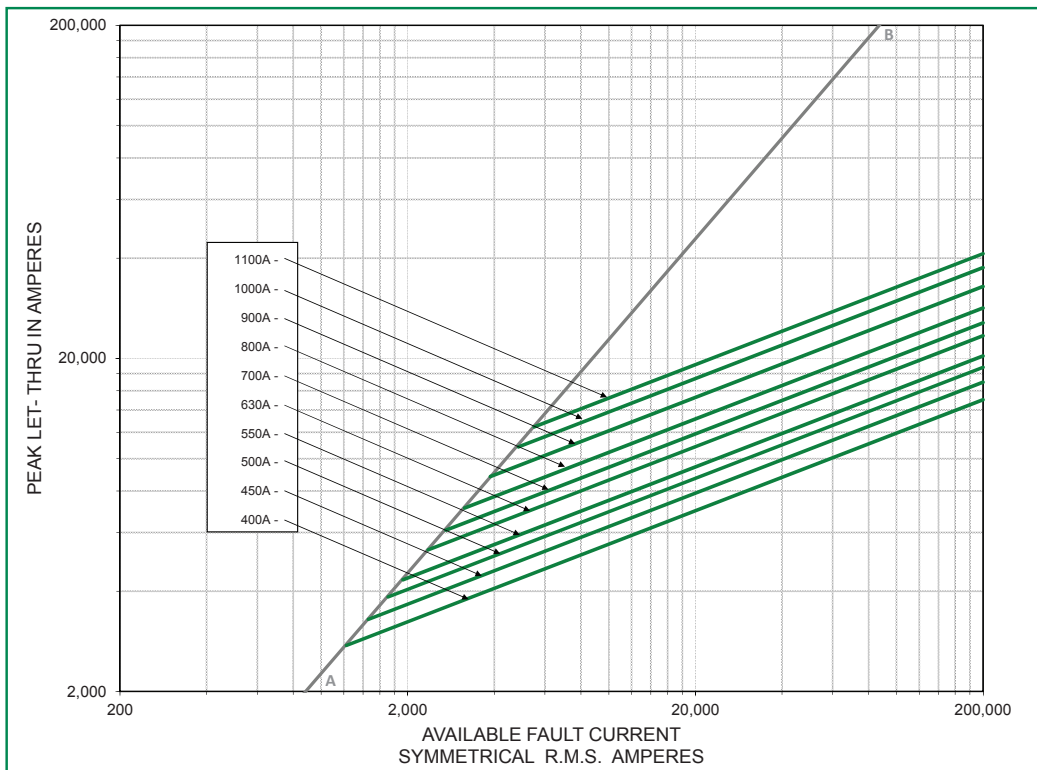
Peak Let-Thru Curve (30 Case Size)



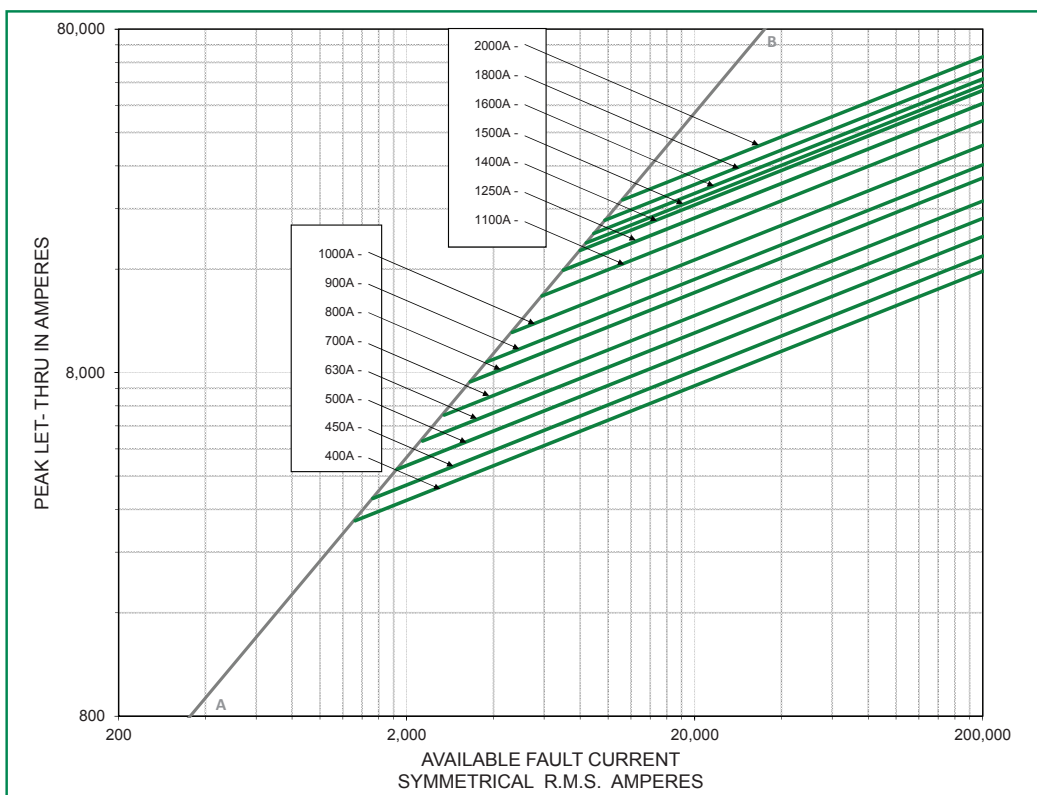
Peak Let-Thru Curve (31 Case Size)



Peak Let-Thru Curve (32 Case Size)



Peak Let-Thru Curve (33 Case Size)



Peak Let-Thru Curve (70 Case Size)



Peak Let-Thru Curve (71 Case Size)



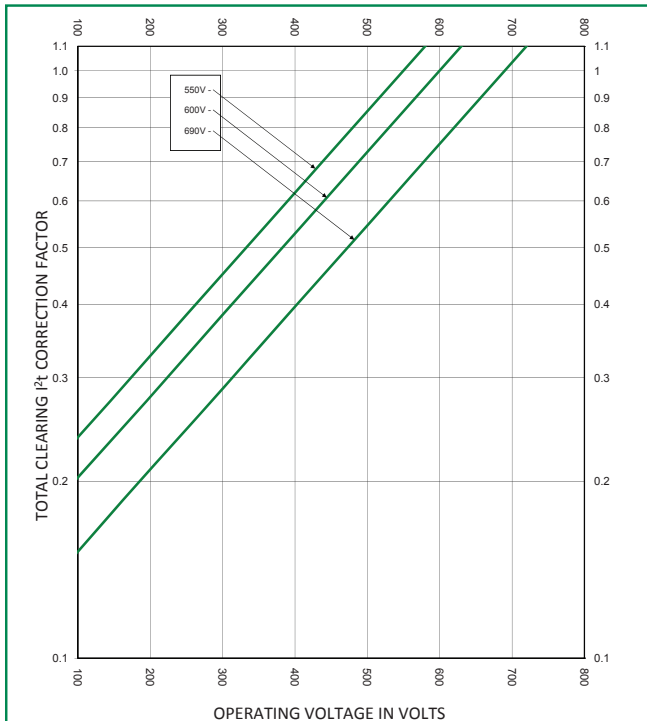
Peak Let-Thru Curve (72 Case Size)



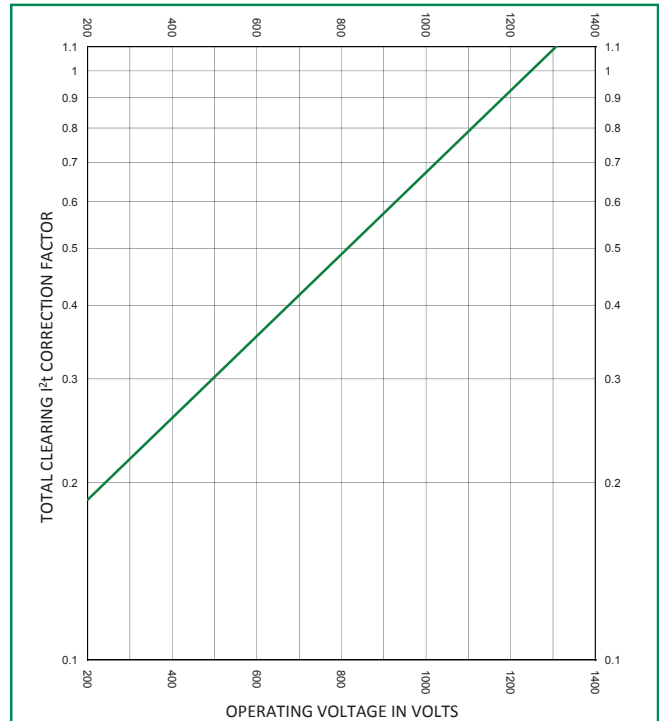
Peak Let-Thru Curve (73 Case Size)



Total Clearing I²t Correction Factor Curve
Case Size (30, 31, 32 and 33)



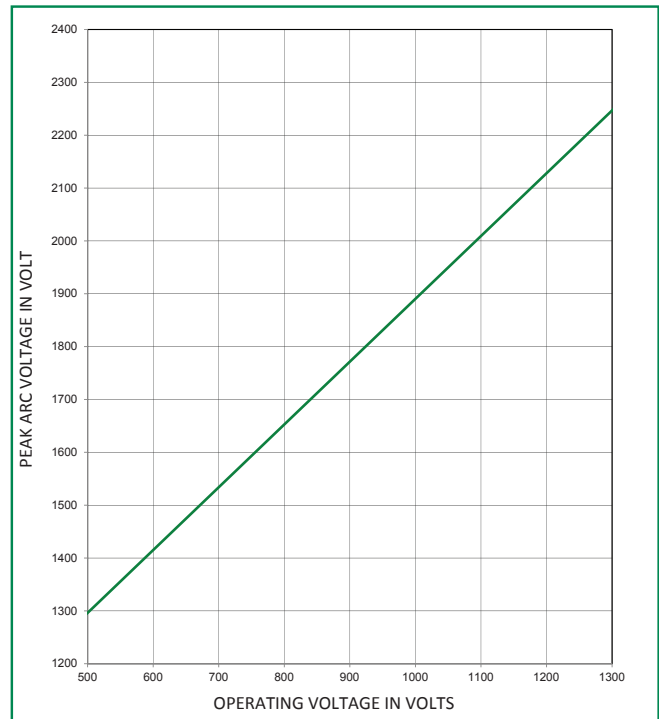
Total Clearing I²t Correction Factor Curve
Case Size (70, 71, 72, and 73)



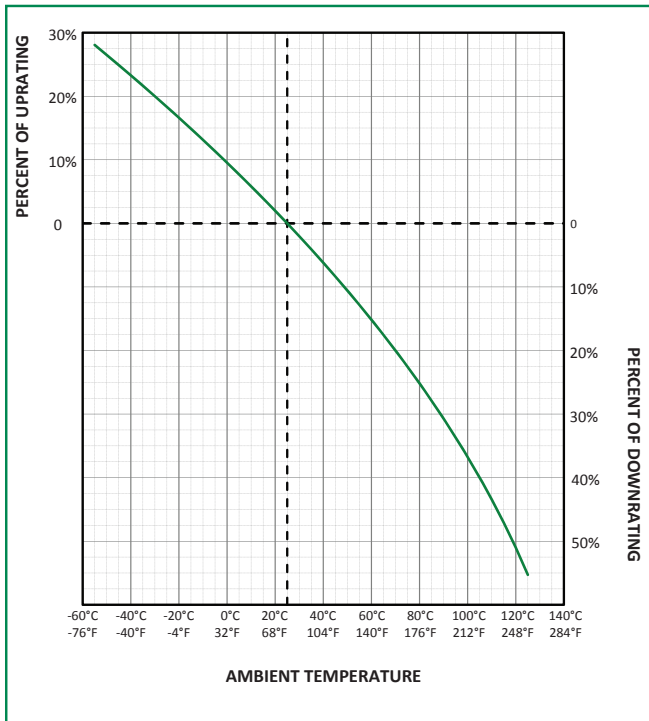
Peak Arc Voltage Curve
Case Size (30, 31, 32 and 33)



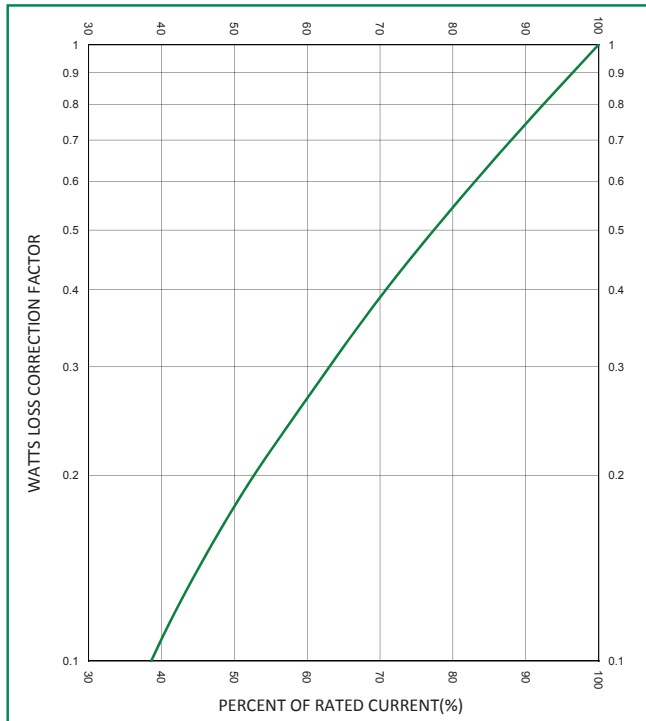
Peak Arc Voltage Curve
Case Size (70, 71, 72, and 73)



Temperature Derating Curve
 (temperature of air immediately surrounding fuse)



Watts Loss Correction Factor Curve



POWR-SPEED® Fuse

PSR SERIES HIGH-SPEED SQUARE BODY

Microswitch

[Dimensions in millimeters]

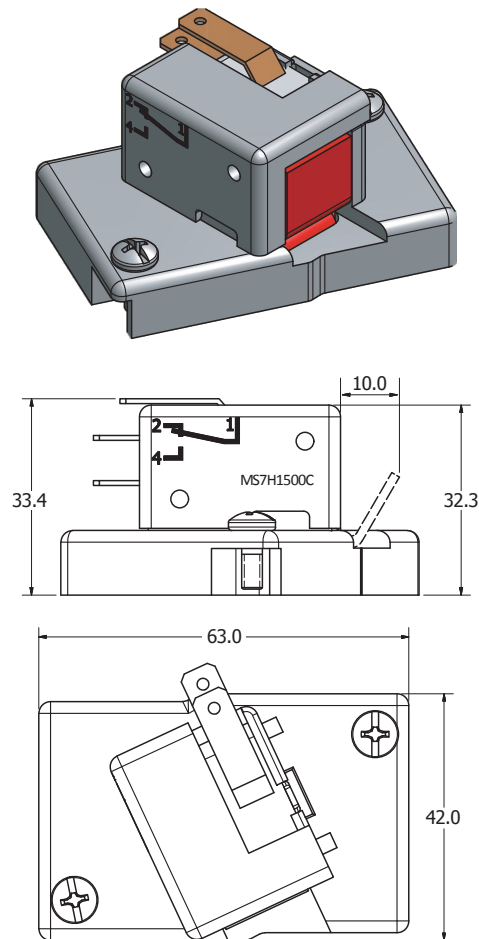
MS3H1000C

Document Number: OL-MS3H1000C Rev. B



MS7H1500C

Document Number: OL-MS7H1500C Rev. B



Electrical Characteristics

| CATALOG NUMBER/ ORDERING NUMBER | INDICATING STYLE | INSULATION VOLTAGE RATING (VAC) | FUSE CASE SIZE | POSITIVE OPERATING MIN VOLTAGE / MIN CURRENT | INTERRUPTING RATING | | | | | | OPERATING TEMP. | RELATIVE HUMIDITY | PACK QUANTITY | |
|------------------------------------|------------------|---------------------------------|----------------|--|---------------------|--------------------|-------|-------|-------------------------------|-------|-----------------|-------------------|---------------|-----------|
| | | | | | CURRENT | NON-INDUCTIVE LOAD | | | INDUCTIVE LOAD (DC L/R=25 ms) | | | | | |
| | | | | | | 30 V | 110 V | 250 V | 30 V | 110 V | | | | 250 V |
| MS3H1000C* | Standard NO-NC | 1000 | 30, 31, 32, 33 | 4 V / 1mA | ac (50/60 Hz) | 5 A | 5 A | 5 A | 5 A | 5 A | 4 A | -60 °C to +125 °C | 95 % | 3 pcs/bag |
| | | | | | dc | 5 A | 0.6 A | 0.3 A | 3 A | 0.2 A | 0.1 A | | | |
| MS7H1500C* | Standard NO-NC | 1500 | 70, 71, 72, 73 | | ac (50/60 Hz) | 5 A | 5 A | 5 A | 5 A | 5 A | 4 A | -60 °C to +125 °C | 95 % | 3 pcs/bag |
| | | | | | dc | 5 A | 0.6 A | 0.3 A | 3 A | 0.2 A | 0.1 A | | | |

* Contains internal microswitch (Part Number: U83161.8), listed under UL File: E42016.

Disclaimer Notice – Information furnished is believed to be accurate and reliable. However, users should independently evaluate the suitability of and test each product selected for their own applications. Littelfuse products are not designed for, and may not be used in, all applications. Read complete Disclaimer Notice at www.littelfuse.com/product-disclaimer.



Компания «ЭлектроПласт» предлагает заключение долгосрочных отношений при поставках импортных электронных компонентов на взаимовыгодных условиях!

Наши преимущества:

- Оперативные поставки широкого спектра электронных компонентов отечественного и импортного производства напрямую от производителей и с крупнейших мировых складов;
- Поставка более 17-ти миллионов наименований электронных компонентов;
- Поставка сложных, дефицитных, либо снятых с производства позиций;
- Оперативные сроки поставки под заказ (от 5 рабочих дней);
- Экспресс доставка в любую точку России;
- Техническая поддержка проекта, помощь в подборе аналогов, поставка прототипов;
- Система менеджмента качества сертифицирована по Международному стандарту ISO 9001;
- Лицензия ФСБ на осуществление работ с использованием сведений, составляющих государственную тайну;
- Поставка специализированных компонентов (Xilinx, Altera, Analog Devices, Intersil, Interpoint, Microsemi, Aeroflex, Peregrine, Syfer, Eurofarad, Texas Instrument, Miteq, Cobham, E2V, MA-COM, Hittite, Mini-Circuits, General Dynamics и др.);

Помимо этого, одним из направлений компании «ЭлектроПласт» является направление «Источники питания». Мы предлагаем Вам помощь Конструкторского отдела:

- Подбор оптимального решения, техническое обоснование при выборе компонента;
- Подбор аналогов;
- Консультации по применению компонента;
- Поставка образцов и прототипов;
- Техническая поддержка проекта;
- Защита от снятия компонента с производства.



Как с нами связаться

Телефон: 8 (812) 309 58 32 (многоканальный)

Факс: 8 (812) 320-02-42

Электронная почта: org@eplast1.ru

Адрес: 198099, г. Санкт-Петербург, ул. Калинина, дом 2, корпус 4, литера А.