

Ø 7.5 mm Film Dielectric Trimmers

TEST VOLTAGE (DC) FOR 1 MINUTE:

500 V

MAXIMUM CONTACT RESISTANCE:

10 mΩ

MINIMUM INSULATION RESISTANCE:

10 000 MΩ

CATEGORY TEMPERATURE RANGE:**PP**

- 40 to + 70 °C

PE, PC, PTFE, PET

- 40 to + 85 °C

CLIMATIC CATEGORY (IEC 60068):**PP**

40/070/21

PE, PC, PTFE, PET

40/085/21

MINIMUM STORAGE TEMPERATURE:

- 55 °C

RELATED SPECIFICATION:

IEC 60418-1 and 4

EFFECTIVE ANGLE OF ROTATION:

180° (rotation in 180° only, see "Life of Trimmer")

OPERATING TORQUE:**C_{max} < 33 pF**

1 to 15 mNm

C_{max} ≥ 33 pF

1 to 25 mNm

MAXIMUM AXIAL THRUST:

2 N

FEATURES

- Housing diameter 7.5 mm
- For a basic grid of 2.54 mm (0.1") or 2.50 mm
- Top and bottom or top adjustment
- Vertical and horizontal versions
- Round head


RoHS
COMPLIANT
APPLICATIONS

- For consumer and industrial equipment

DESCRIPTION:

The vanes of the trimmer are stacked on a sturdy plastic base. The color of the base indicates the maximum capacitance (see Electrical Data Table). The dielectric is a film of polypropylene (PP), polyethylene (PE), polycarbonate (PC), polytetrafluorethylene (PTFE), or polyethyleneterephthalate (PET) which supports the vanes in such a way that good stability is ensured and no microphony can occur.

Flux absorption between the vanes is prevented.

Cleaning with solvents is not advised.

Versions are available with either a vertical spindle, or a horizontal spindle (see dimensional outlines). Both versions have top adjustment by means of a screwdriver or trimming key and bottom adjustment by means of a key.

QUALITY LEVEL:

Sampling and data evaluation for quality level in accordance with "MIL-STD-105D" and "IEC 60410":

< 0.15 % major defects

< 0.65 % minor defects

Each capacitor is tested for minimum C_{max} and is also subjected to the full test voltage.

C_{min} / C_{max}:

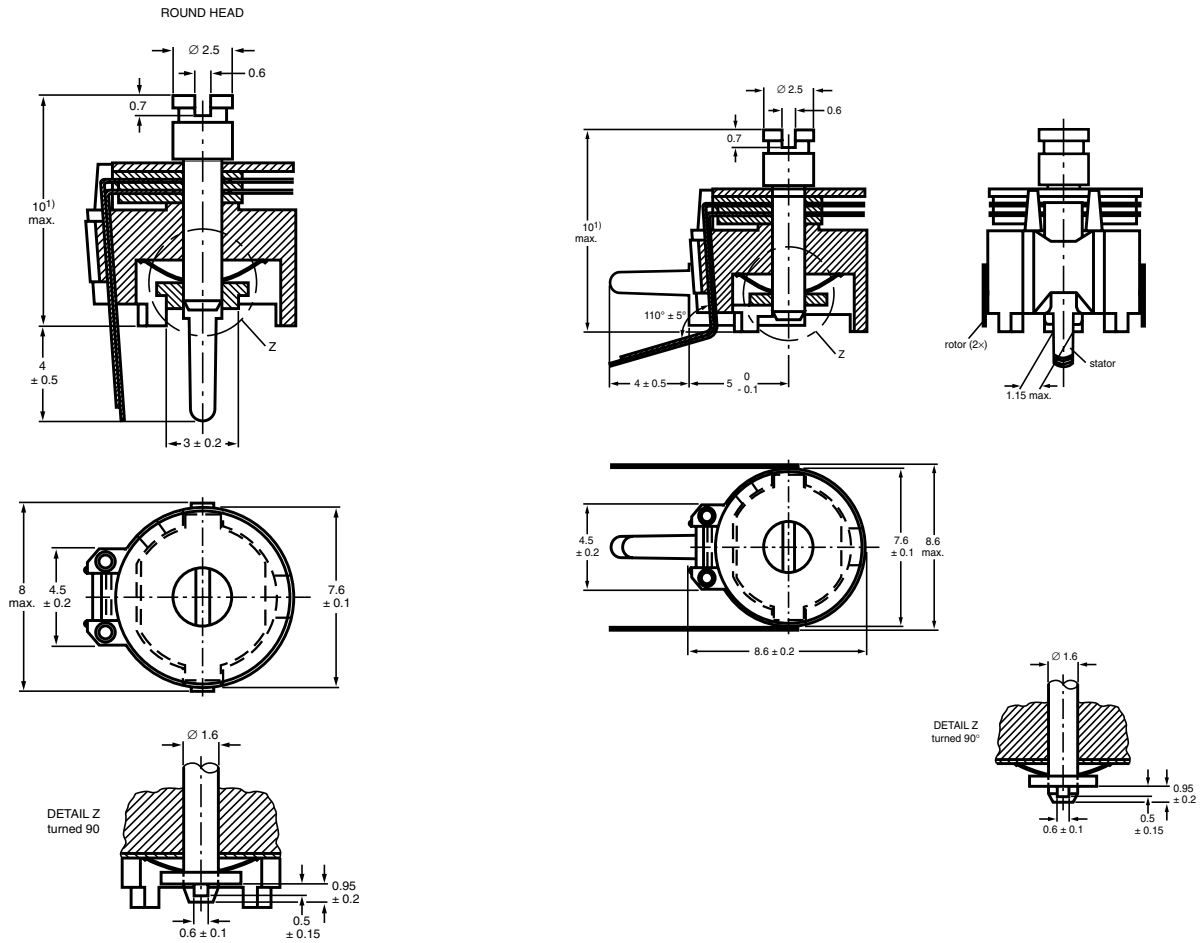
1.4/5.5 to 3/50 pF

RATED VOLTAGE (DC):

250 V

LIFE OF TRIMMER:

Maximum 10 cycles: rotation in 180° only (the electrical and mechanical performance is not guaranteed if rotated beyond 10 cycles)



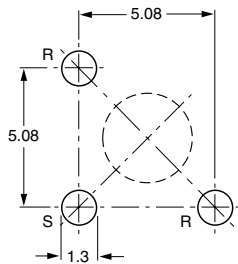
Trimmers BFC2 808 series, vertical version

Trimmers BFC2 808 series, horizontal version

Dimensions in millimeters

ADJUSTMENT

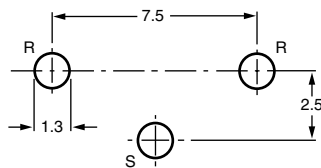
For top adjustment a screwdriver or trimming key can be used; for bottom adjustment a key is required as shown below



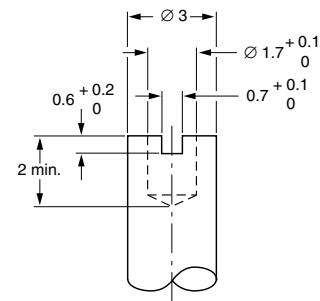
R = rotor, S = stator

The large hole is for bottom adjustment and the diameter is determined by user's requirements.

Hole pattern



R = rotor, S = stator



Bottom adjustment key

ORDERING INFORMATION

| C _{min} /C _{max} (pF) | CATALOG NUMBER BFC2 808 | | |
|--|-------------------------------|---------------------|---------------------------|
| | VERTICAL VERSION | | HORIZONTAL VERSION |
| | ROUND HEAD | | |
| | TOP AND BOTTOM ADJUSTMENT | TOP ADJUSTMENT ONLY | TOP AND BOTTOM ADJUSTMENT |
| 1.4/5.5 | 11558 | 00004 | 51558 |
| 2/9 | 00018 | - | - |
| 2/10 | 11109 | 00005 | 51109 |
| 2/10 | - | 11004 | - |
| 2/15 | 11159 | - | - |
| 2/18 | 00016 | - | - |
| 2.5/20 | - | 11006 | - |
| 2.5/22 | 11229 | 00006 | 51229 |
| 2.5/27 | 11279 | - | 51279 |
| 3/33 | 11339 | - | - |
| 3/40 | 11409 | - | 51409 |
| 3/50 | 11509 | - | 51509 |

MOUNTING

The trimmer can be mounted on printed-circuit boards with a grid of 2.50 mm or 2.54 mm and a minimum hole diameter of 1.25 mm.

PACKAGING

Bulk packaged in cardboard boxes lined with expanded plastic. For smallest packaging quantity (SPQ) see Electrical Data Table.

ELECTRICAL DATA

| GUARANTEED MAX. C _{min} / MIN. C _{max} AT 200 kHz (pF) | SPINDLE | SHAPE OF HEAD | FIG. | ADJ. MODE | DIEL. | TAN δ AT C _{max} x 10 ⁻⁴ | | TEMP. COEFF. (10 ⁻⁶ /K) | MIN. f _{res} at C _{max} (MHz) | COL. OF BASE | SPQ | CATALOG NUMBER BFC2 |
|--|------------|---------------------|------|--------------|-------|---|---------|--|---|--------------------|------|----------------------------------|
| | | | | | | 1 MHz | 100 MHz | | | | | |
| | | | | | | | | | | | | |
| 1.4/5.5 | vertical | round | 1 | top + bottom | PE | ≤ 10 | ≤ 25 | - 250 ± 350 | 850 | grey | 1400 | 808 11558 |
| | | | 1 | top | | | | | | | 1400 | 808 00004 |
| | horizontal | round | 2 | top + bottom | | | | | | | 1200 | 808 51558 |
| 2/9 | vertical | round | 1 | top + bottom | PTFE | ≤ 10 | ≤ 15 | - 150 ± 800 | 400 | yellow | 1400 | 808 00018 |
| 2/10 | vertical | round | 1 | top + bottom | PP | ≤ 10 | ≤ 25 | - 250 ± 800 | 480 | yellow | 1400 | 808 11109 |
| | | | 1 | top | | | | | | | 1400 | 808 00005 |
| | horizontal | round | 2 | top + bottom | | | | | | | 1200 | 808 51109 |
| | vertical | round | 1 | top | PC | ≤ 70 | ≤ 100 | - 150 ± 800 | 250 | yellow | 1000 | 808 11004 |
| 2/15 | vertical | round | 1 | top + bottom | PP | ≤ 10 | ≤ 25 | - 250 ± 600 | 450 | blue | 1400 | 808 11159 |
| 2/18 | vertical | round | 1 | top + bottom | PTFE | ≤ 10 | ≤ 15 | - 250 ± 350 | 350 | green | 1400 | 808 00016 |
| 2.5/20 | vertical | round | 1 | top | PET | ≤ 160 | - | 0 ± 1100 | 250 | green | 1000 | 808 11006 |
| 2.5/22 | vertical | round | 1 | top + bottom | PP | ≤ 10 | ≤ 25 | - 200 ± 500 | 350 | green | 1400 | 808 11229 |
| | | | 1 | top | | | | | | | 1400 | 808 00006 |
| | horizontal | round | 2 | top + bottom | | | | | | | 1200 | 808 51229 |
| 2.5/27 | vertical | round | 1 | top + bottom | PC | ≤ 70 | - | - 50 ± 500 | 350 | red | 1400 | 808 11279 |
| | horizontal | round | 2 | top + bottom | | | | | | | 1200 | 808 51279 |
| 3/33 | vertical | round | 1 | top + bottom | PP | ≤ 10 | - | - 250 ± 350 | 300 | brown | 1400 | 808 11339 |
| 3/40 | vertical | round | 1 | top + bottom | PC | ≤ 70 | - | - 50 ± 400 | 300 | violet | 1400 | 808 11409 |
| | horizontal | round | 2 | top + bottom | | | | | | | 1200 | 808 51409 |
| 3/50 | vertical | round | 1 | top + bottom | PC | ≤ 70 | - | - 50 ± 500 | 250 | black | 1400 | 808 11509 |
| | horizontal | round | 2 | top + bottom | | | | | | | 1200 | 808 51509 |

TEST PROCEDURES AND REQUIREMENTS

| IEC 60418-1 CLAUSE | IEC 60068 TEST METHOD | TEST | PROCEDURE | REQUIREMENTS |
|--------------------|-----------------------|---|---|--|
| 4.2 | | method of mounting | method A | |
| 14 | | capacitance drift | after TC measurement | $\Delta C/C: \leq 1\%$ for $C_{max} < 40$ pF; $\Delta C/C: \leq 2.5\%$ for $C_{max} \geq 40$ pF |
| 19 | | thrust | axial thrust of 2 N | $\Delta C/C: \leq 0.3\%$ |
| 21 | | robustness of terminations: | | |
| 21.1 | Ua | tensile | 1 N | no damage |
| 21.2 | Ub | bending | 1 cycle | no damage |
| 22 | Na | rapid change of temperature | 1 cycle; 0.5 hours at lower and 0.5 hours at upper category temperature | $\Delta C/C: \leq 2\%$ |
| 23 | T | soldering: | | |
| | Ta | solderability | solder bath immersion 3 mm; 235 °C; 2 s | good wetting no mechanical damage |
| | Tb | resistance to heat | solder bath: 260 °C; 10 s | no mechanical damage |
| 24 | Eb | impact bump | 4000 ± 10 bumps; 40 g; 6 ms | $\Delta C/C: \leq 0.6\%$; no mechanical damage |
| 25 | Fc | vibration | frequency 10 to 55 Hz; amplitude 0.35 mm; 1.5 hours | $\Delta C/C: \leq 0.6\%$; no mechanical damage |
| 26 | | climatic sequence: | | |
| 26.1 | B | dry heat | 16 hours at upper category temperature | $\Delta C/C: \leq 4$ $\tan \delta: \leq 10 \times 10^{-4}$ for $C_{max} < 27$ pF; $\tan \delta: \leq 70 \times 10^{-4}$ for $C_{max} \geq 27$ pF; $\tan \delta: \leq 80 \times 10^{-4}$ for $C_{max} \geq 40$ pF $R_{ins}: \geq 10\,000$ MΩ; rotor contact R: ≤ 10 mΩ |
| 26.2 | D | damp heat accelerated, first cycle | 1 cycle; 24 hours; + 40 °C; 95 to 100 % RH | voltage proof: 500 V for 1 minute |
| 26.3 | Aa | cold | 16 hours; - 40 °C | visual examination: no mechanical damage |
| 26.5 | | damp heat accelerated, remaining cycles | 1 cycle; 24 hours; + 40 °C; 95 to 100 % RH | operating torque: 1 to 15 mNm for $C_{max} < 33$ pF; 1 to 25 mNm for $C_{max} \geq 33$ pF |
| 27 | Ca | damp heat steady state | 21 days; + 40 °C; 90 to 95 % RH | $\Delta C/C: \leq 5\%$ $\tan \delta: \leq 30 \times 10^{-4}$ for $C_{max} < 27$ pF; $\tan \delta: \leq 70 \times 10^{-4}$ for $C_{max} \geq 27$ pF; $\tan \delta: \leq 80 \times 10^{-4}$ for $C_{max} \geq 40$ pF $R_{ins}: \geq 10\,000$ MΩ; rotor contact R: ≤ 10 mΩ voltage proof: 500 V for 1 minute visual examination: no mechanical damage operating torque: 1 to 15 mNm for $C_{max} < 33$ pF; 1 to 25 mNm for $C_{max} \geq 33$ pF |
| 29 | | mechanical endurance | 10 cycles Maximum 10 cycles: rotation in 180° only (the electrical and mechanical performance is not guaranteed if rotated beyond 10 cycles) | $\Delta C/C: \leq 1.5\%$ $\Delta C/C$ after axial thrust: ≤ 0.3 %; rotor contact R: ≤ 10 mΩ voltage proof: 500 V for 1 minute visual examination: no mechanical damage operating torque: 1 to 15 mNm for $C_{max} < 33$ pF; 1 to 25 mNm for $C_{max} \geq 33$ pF |



Disclaimer

ALL PRODUCT, PRODUCT SPECIFICATIONS AND DATA ARE SUBJECT TO CHANGE WITHOUT NOTICE TO IMPROVE RELIABILITY, FUNCTION OR DESIGN OR OTHERWISE.

Vishay Intertechnology, Inc., its affiliates, agents, and employees, and all persons acting on its or their behalf (collectively, "Vishay"), disclaim any and all liability for any errors, inaccuracies or incompleteness contained in any datasheet or in any other disclosure relating to any product.

Vishay makes no warranty, representation or guarantee regarding the suitability of the products for any particular purpose or the continuing production of any product. To the maximum extent permitted by applicable law, Vishay disclaims (i) any and all liability arising out of the application or use of any product, (ii) any and all liability, including without limitation special, consequential or incidental damages, and (iii) any and all implied warranties, including warranties of fitness for particular purpose, non-infringement and merchantability.

Statements regarding the suitability of products for certain types of applications are based on Vishay's knowledge of typical requirements that are often placed on Vishay products in generic applications. Such statements are not binding statements about the suitability of products for a particular application. It is the customer's responsibility to validate that a particular product with the properties described in the product specification is suitable for use in a particular application. Parameters provided in datasheets and/or specifications may vary in different applications and performance may vary over time. All operating parameters, including typical parameters, must be validated for each customer application by the customer's technical experts. Product specifications do not expand or otherwise modify Vishay's terms and conditions of purchase, including but not limited to the warranty expressed therein.

Except as expressly indicated in writing, Vishay products are not designed for use in medical, life-saving, or life-sustaining applications or for any other application in which the failure of the Vishay product could result in personal injury or death. Customers using or selling Vishay products not expressly indicated for use in such applications do so at their own risk. Please contact authorized Vishay personnel to obtain written terms and conditions regarding products designed for such applications.

No license, express or implied, by estoppel or otherwise, to any intellectual property rights is granted by this document or by any conduct of Vishay. Product names and markings noted herein may be trademarks of their respective owners.

Material Category Policy

Vishay Intertechnology, Inc. hereby certifies that all its products that are identified as RoHS-Compliant fulfill the definitions and restrictions defined under Directive 2011/65/EU of The European Parliament and of the Council of June 8, 2011 on the restriction of the use of certain hazardous substances in electrical and electronic equipment (EEE) - recast, unless otherwise specified as non-compliant.

Please note that some Vishay documentation may still make reference to RoHS Directive 2002/95/EC. We confirm that all the products identified as being compliant to Directive 2002/95/EC conform to Directive 2011/65/EU.

Vishay Intertechnology, Inc. hereby certifies that all its products that are identified as Halogen-Free follow Halogen-Free requirements as per JEDEC JS709A standards. Please note that some Vishay documentation may still make reference to the IEC 61249-2-21 definition. We confirm that all the products identified as being compliant to IEC 61249-2-21 conform to JEDEC JS709A standards.



Компания «ЭлектроПласт» предлагает заключение долгосрочных отношений при поставках импортных электронных компонентов на взаимовыгодных условиях!

Наши преимущества:

- Оперативные поставки широкого спектра электронных компонентов отечественного и импортного производства напрямую от производителей и с крупнейших мировых складов;
- Поставка более 17-ти миллионов наименований электронных компонентов;
- Поставка сложных, дефицитных, либо снятых с производства позиций;
- Оперативные сроки поставки под заказ (от 5 рабочих дней);
- Экспресс доставка в любую точку России;
- Техническая поддержка проекта, помощь в подборе аналогов, поставка прототипов;
- Система менеджмента качества сертифицирована по Международному стандарту ISO 9001;
- Лицензия ФСБ на осуществление работ с использованием сведений, составляющих государственную тайну;
- Поставка специализированных компонентов (Xilinx, Altera, Analog Devices, Intersil, Interpoint, Microsemi, Aeroflex, Peregrine, Syfer, Eurofarad, Texas Instrument, Miteq, Cobham, E2V, MA-COM, Hittite, Mini-Circuits, General Dynamics и др.);

Помимо этого, одним из направлений компании «ЭлектроПласт» является направление «Источники питания». Мы предлагаем Вам помощь Конструкторского отдела:

- Подбор оптимального решения, техническое обоснование при выборе компонента;
- Подбор аналогов;
- Консультации по применению компонента;
- Поставка образцов и прототипов;
- Техническая поддержка проекта;
- Защита от снятия компонента с производства.



Как с нами связаться

Телефон: 8 (812) 309 58 32 (многоканальный)

Факс: 8 (812) 320-02-42

Электронная почта: org@eplast1.ru

Адрес: 198099, г. Санкт-Петербург, ул. Калинина, дом 2, корпус 4, литера А.