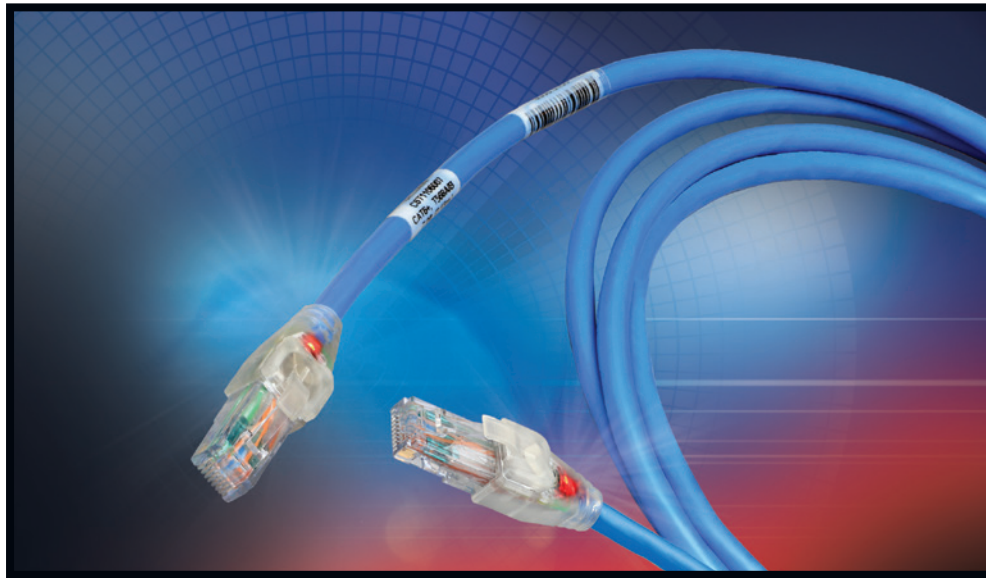


PB382

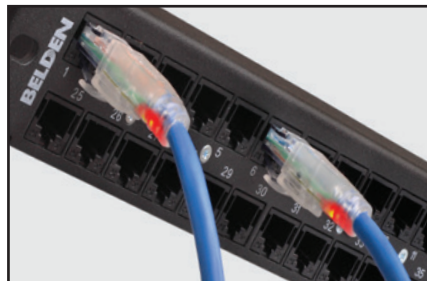
Belden Traceable Bonded-Pair Patch Cords

Meeting the ever growing need to quickly and easily identify and trace network connections in today's high-density and mission-critical infrastructure environments.



Belden Traceable Bonded-Pair Patch Cords shed light on your network connections, saving time and money

In today's high-density and complex network infrastructure environments, maintaining uptime and network reliability is more important than ever. Being able to quickly and easily trace cables with instant cable identification can dramatically reduce downtime. Belden Traceable Bonded-Pair Patch Cords allow today's IT manager to ensure fast and easy maintenance, and quick resolution of mistakes and erroneous network connections to save time and money.

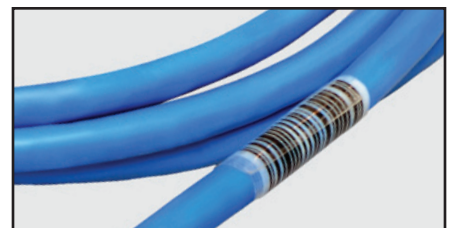


Belden Traceable Bonded-Pair Patch Cords feature an integrated exceptionally bright LED light for easy identification. With just a simple press of a button on the low-profile plug, the LED flashes on both ends of the patch cord for easy port identification. Offered in 10GX (Category 6A) for 10 gigabit applications and CAT6+ for gigabit applications, Belden Traceable Bonded-Pair Patch Cords are ideal for tracing server and switch connections in the data center, congested outlet connections in open office areas, and high-bandwidth connections in mission critical applications like financial and medical-grade networks.

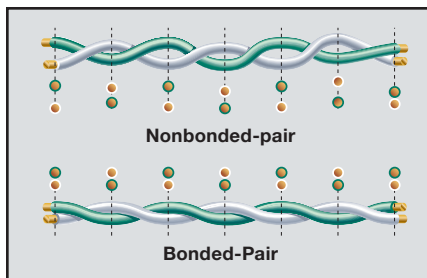
Unique Features

Belden Traceable Bonded-Pair Patch Cords have several unique features that make them an exceptional alternative to other patch cords on the market. They feature a highly-efficient and bright LED with a battery life expectancy of seven years, or 1,000 activations (battery is also replaceable). When activated, the LED blinks for 20 seconds and can be stopped at any time with a second press of the button. The LED and its tracing wires are integrated right into the patch cord, eliminating the need for a separate power source.

Belden Traceable Bonded-Pair Patch Cords come standard with a unique serial number and bar code at each end. This code can be scanned using mobile enabled DCIM systems to manage end-to-end connectivity and inventory throughout the enterprise. Because the cords are identified and managed using a barcode they require no additional physical equipment to solve the challenge of enterprise connectivity management; bringing true intelligence to patch management. Belden worked with Cormant Inc. to develop this feature and these cords are ready to be used as part of an overall Cormant-CS mobile DCIM solution as well as other IM systems.



Continued



With Belden's patented Bonded-Pair technology that bonds individual insulated conductors together along their longitudinal axis for uniform conductor-to-conductor spacing, these patch cords maintain stability and electrical performance when subjected to everyday handling stresses such as bending, coiling and pulling. The cords also feature an overmolded boot that offers improved strain relief for optimum performance in high-density installations. Belden Traceable Bonded-Pair Patch Cord's unique traceability combined with superior robustness and small diameter offer greater flexibility to easily handle moves, adds and changes in higher density network environments.

Offered in 1-foot increments for lengths to 15 feet, 20 and 25-foot versions and custom lengths up to 250 feet, Belden Traceable Bonded-Pair Patch Cords are 100% factory tested and certified to exceed TIA Category 6A and Category 6 performance specifications.

Traceable Patch Cord Components

- Battery Cover/LatchTab**
 - Remove to Replace Battery
 - Provides Snagless Feature
- LED/Switch Module**
 - LED Blinks for 20 Seconds
 - You Can Stop It At Any Time
- Overmolded Boot**
 - Provides Strain Relief
 - Protects Circuitry
- Plug Shell**
 - Clear Polycarbonate
 - 50 µin Gold Plating
- Pair Position Insert**
 - Guarantees DNEXT Stability
 - Provides Headroom in Systems
- Tracing Wires**
 - Carry Signal for LED
- Bonded-Pair Technology**
 - Provides Stability in Electrical Performance

Key Specifications

- Available in 10GX and CAT6+ for end-to-end Belden 10GX, 4800, 3600 and 2400 systems
- Exceptionally bright, efficient LED light for easy identification in both bright and dark environments
- Belden Bonded-Pair technology for extra robustness, performance and reliability
- Bar code tagging on each end of the cord compatible with DCIM systems
- Low-profile plug boot supports ultra-high density 48-port 1U patch panels
- 100% factory tested and certified for Category 6A and Category 6
- Replaceable battery with 7-year life expectancy or 1,000 activations
- Available in a variety of colors and sizes, with custom lengths available to 250 feet
- Backed by superior support and a Belden 25-year IBDN Certified System Warranty

The Belden Advantage

Belden Traceable Bonded-Pair Patch Cords are backed by superior local and global technical support, fully-trained installation partners and the most comprehensive distribution network. To learn more about Traceable Bonded-Pair Patch Cords, call **1.800.BELDEN.1** today, or visit the web site at www.belden.com.

Ordering Information

10GX Traceable Patch Cord, Bonded-Pair, 4-Pair, 24 AWG Solid, T568A/B-T568A/B, CMR

Description	Belden Part Number							
	Red	Orange	Yellow	Green	Blue	Gray	White	Black
2 ft (0.6 m)	CAT1102002	CAT1103002	CAT1104002	CAT1105002	CAT1106002	CAT1108002	CAT1109002	CAT1100002
4 ft (1.2 m)	CAT1102004	CAT1103004	CAT1104004	CAT1105004	CAT1106004	CAT1108004	CAT1109004	CAT1100004
7 ft (2.1 m)	CAT1102007	CAT1103007	CAT1104007	CAT1105007	CAT1106007	CAT1108007	CAT1109007	CAT1100007
10 ft (3.0 m)	CAT1102010	CAT1103010	CAT1104010	CAT1105010	CAT1106010	CAT1108010	CAT1109010	CAT1100010
15 ft (4.6 m)	CAT1102015	CAT1103015	CAT1104015	CAT1105015	CAT1106015	CAT1108015	CAT1109015	CAT1100015
25 ft (7.6 m)	CAT1102025	CAT1103025	CAT1104025	CAT1105025	CAT1106025	CAT1108025	CAT1109025	CAT1100025

Custom lengths available up to 250-ft

CAT6+ Traceable Patch Cord, Bonded-Pair, 4-Pair, 24 AWG Solid, T568A/B-T568A/B, CMR

Description	Belden Part Number							
	Red	Orange	Yellow	Green	Blue	Gray	White	Black
2 ft (0.6 m)	C6T1102002	C6T1103002	C6T1104002	C6T1105002	C6T1106002	C6T1108002	C6T1109002	C6T1100002
4 ft (1.2 m)	C6T1102004	C6T1103004	C6T1104004	C6T1105004	C6T1106004	C6T1108004	C6T1109004	C6T1100004
7 ft (2.1 m)	C6T1102007	C6T1103007	C6T1104007	C6T1105007	C6T1106007	C6T1108007	C6T1109007	C6T1100007
10 ft (3.0 m)	C6T1102010	C6T1103010	C6T1104010	C6T1105010	C6T1106010	C6T1108010	C6T1109010	C6T1100010
15 ft (4.6 m)	C6T1102015	C6T1103015	C6T1104015	C6T1105015	C6T1106015	C6T1108015	C6T1109015	C6T1100015
25 ft (7.6 m)	C6T1102025	C6T1103025	C6T1104025	C6T1105025	C6T1106025	C6T1108025	C6T1109025	C6T1100025

Custom lengths available up to 250-ft

Cormant-CS is a trademark of Cormant Inc.



Компания «ЭлектроПласт» предлагает заключение долгосрочных отношений при поставках импортных электронных компонентов на взаимовыгодных условиях!

Наши преимущества:

- Оперативные поставки широкого спектра электронных компонентов отечественного и импортного производства напрямую от производителей и с крупнейших мировых складов;
- Поставка более 17-ти миллионов наименований электронных компонентов;
- Поставка сложных, дефицитных, либо снятых с производства позиций;
- Оперативные сроки поставки под заказ (от 5 рабочих дней);
- Экспресс доставка в любую точку России;
- Техническая поддержка проекта, помощь в подборе аналогов, поставка прототипов;
- Система менеджмента качества сертифицирована по Международному стандарту ISO 9001;
- Лицензия ФСБ на осуществление работ с использованием сведений, составляющих государственную тайну;
- Поставка специализированных компонентов (Xilinx, Altera, Analog Devices, Intersil, Interpoint, Microsemi, Aeroflex, Peregrine, Syfer, Eurofarad, Texas Instrument, Miteq, Cobham, E2V, MA-COM, Hittite, Mini-Circuits, General Dynamics и др.);

Помимо этого, одним из направлений компании «ЭлектроПласт» является направление «Источники питания». Мы предлагаем Вам помощь Конструкторского отдела:

- Подбор оптимального решения, техническое обоснование при выборе компонента;
- Подбор аналогов;
- Консультации по применению компонента;
- Поставка образцов и прототипов;
- Техническая поддержка проекта;
- Защита от снятия компонента с производства.



Как с нами связаться

Телефон: 8 (812) 309 58 32 (многоканальный)

Факс: 8 (812) 320-02-42

Электронная почта: org@eplast1.ru

Адрес: 198099, г. Санкт-Петербург, ул. Калинина, дом 2, корпус 4, литера А.