

LSK Series

Features

- Snap-in terminal type
- 105°C, 5,000 hours assured
- Suitable for medium to high voltage circuits
- RoHS Compliance



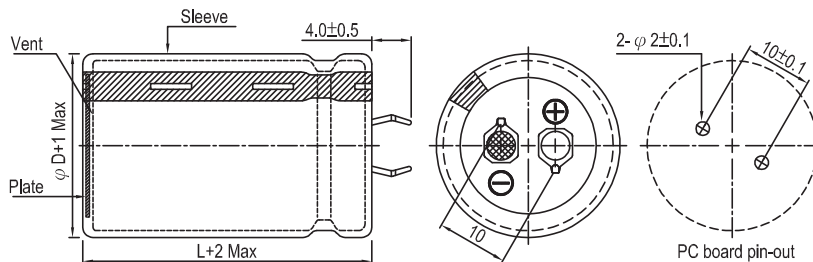
Sleeve & Marking Color: Black & White

Specifications

Items	Performance																						
Category Temperature Range	-25°C ~ +105°C																						
Capacitance Tolerance	±20% (at 120Hz, 20°C)																						
Leakage Current (at 20°C)	$I = 3\sqrt{CV}$ or 1.5 mA whichever is smaller (after 5 minutes) Where, C = rated capacitance in μF, V = rated DC working voltage in V																						
Tanδ (at 120Hz, 20°C)	<table border="1"> <thead> <tr> <th>Rated Voltage</th> <th>160</th> <th>200</th> <th>250</th> <th>315</th> <th>350</th> <th>400</th> <th>420</th> <th>450</th> <th>500</th> </tr> </thead> <tbody> <tr> <td>Tanδ (max)</td> <td>0.15</td> <td>0.15</td> <td>0.15</td> <td>0.15</td> <td>0.15</td> <td>0.15</td> <td>0.15</td> <td>0.15</td> <td>0.15</td> </tr> </tbody> </table>	Rated Voltage	160	200	250	315	350	400	420	450	500	Tanδ (max)	0.15	0.15	0.15	0.15	0.15	0.15	0.15	0.15	0.15		
Rated Voltage	160	200	250	315	350	400	420	450	500														
Tanδ (max)	0.15	0.15	0.15	0.15	0.15	0.15	0.15	0.15	0.15														
Low Temperature Characteristics (at 120Hz)	<p>Impedance ratio shall not exceed the values given in the table below.</p> <table border="1"> <thead> <tr> <th colspan="2">Rated Voltage</th> <th>160</th> <th>200</th> <th>250</th> <th>315</th> <th>350</th> <th>400</th> <th>420</th> <th>450</th> <th>500</th> </tr> </thead> <tbody> <tr> <td>Impedance Ratio</td> <td>Z(-25°C)/Z(+20°C)</td> <td>4</td> <td>4</td> <td>4</td> <td>4</td> <td>4</td> <td>8</td> <td>8</td> <td>8</td> <td>8</td> </tr> </tbody> </table>	Rated Voltage		160	200	250	315	350	400	420	450	500	Impedance Ratio	Z(-25°C)/Z(+20°C)	4	4	4	4	4	8	8	8	8
Rated Voltage		160	200	250	315	350	400	420	450	500													
Impedance Ratio	Z(-25°C)/Z(+20°C)	4	4	4	4	4	8	8	8	8													
Endurance	<table border="1"> <thead> <tr> <th>Test Time</th> <th>5,000 Hrs</th> </tr> </thead> <tbody> <tr> <td>Capacitance Change</td> <td>Within ±25% of initial value</td> </tr> <tr> <td>Tanδ</td> <td>Less than 250% of specified value</td> </tr> <tr> <td>Leakage Current</td> <td>Within specified value</td> </tr> </tbody> </table> <p>* The above specifications shall be satisfied when the capacitors are restored to 20°C after the rated voltage applied with rated ripple current for 5,000 hours at 105°C.</p>	Test Time	5,000 Hrs	Capacitance Change	Within ±25% of initial value	Tanδ	Less than 250% of specified value	Leakage Current	Within specified value														
Test Time	5,000 Hrs																						
Capacitance Change	Within ±25% of initial value																						
Tanδ	Less than 250% of specified value																						
Leakage Current	Within specified value																						
Shelf Life Test	<table border="1"> <thead> <tr> <th>Test Time</th> <th>1,000 Hrs</th> </tr> </thead> <tbody> <tr> <td>Capacitance Change</td> <td>Within ±20% of initial value</td> </tr> <tr> <td>Tanδ</td> <td>Less than 150% of specified value</td> </tr> <tr> <td>Leakage Current</td> <td>Within specified value</td> </tr> </tbody> </table> <p>* The above specifications shall be satisfied when the capacitors are restored to 20°C after exposing them for 1,000 hours at 105°C without voltage applied. The rated voltage shall be applied to the capacitors before the measurements (Refer to JIS C 5101-4 4.1).</p>	Test Time	1,000 Hrs	Capacitance Change	Within ±20% of initial value	Tanδ	Less than 150% of specified value	Leakage Current	Within specified value														
Test Time	1,000 Hrs																						
Capacitance Change	Within ±20% of initial value																						
Tanδ	Less than 150% of specified value																						
Leakage Current	Within specified value																						
Ripple Current and Frequency Multipliers	<table border="1"> <thead> <tr> <th>Frequency (Hz)</th> <th>50 / 60</th> <th>100 / 120</th> <th>300</th> <th>1k</th> <th>10k up</th> </tr> </thead> <tbody> <tr> <td>Multiplier</td> <td>0.8</td> <td>1.0</td> <td>1.1</td> <td>1.3</td> <td>1.4</td> </tr> </tbody> </table>	Frequency (Hz)	50 / 60	100 / 120	300	1k	10k up	Multiplier	0.8	1.0	1.1	1.3	1.4										
Frequency (Hz)	50 / 60	100 / 120	300	1k	10k up																		
Multiplier	0.8	1.0	1.1	1.3	1.4																		
Failure percentage	≤ 3 % (During useful life)																						
Failure rate	≤ 70 fit (70×10 ⁻⁹ /h)																						

Diagram of Dimensions

Unit: mm



Dimension and Permissible Ripple Current

Working Voltage V. DC	Capacitance 120Hz, 20°C μF	φ D×L mm	Ripple Current 120 Hz, 105°C A/rms	Tan δ at 120Hz, 20°C	ESR 120Hz, 20°C Ω	LC 5 minutes mA	Part Number
160	390	22 × 35	1.05	0.15	0.510	0.75	LSK391M2C--A2235
	470	20 × 40	1.16	0.15	0.423	0.82	LSK471M2C--A2040
	470	22 × 40	1.23	0.15	0.423	0.82	LSK471M2C--A2240
	470	25 × 30	1.17	0.15	0.423	0.82	LSK471M2C--A2530
	560	22 × 45	1.41	0.15	0.355	0.90	LSK561M2C--A2245
	560	25 × 35	1.36	0.15	0.355	0.90	LSK561M2C--A2535
	560	30 × 25	1.32	0.15	0.355	0.90	LSK561M2C--A3025
	680	22 × 50	1.63	0.15	0.293	0.99	LSK681M2C--A2250
	680	25 × 40	1.59	0.15	0.293	0.99	LSK681M2C--A2540
	680	30 × 30	1.56	0.15	0.293	0.99	LSK681M2C--A3030
	820	25 × 45	1.83	0.15	0.243	1.09	LSK821M2C--A2545
	820	30 × 35	1.83	0.15	0.243	1.09	LSK821M2C--A3035
	820	35 × 30	1.89	0.15	0.243	1.09	LSK821M2C--A3530
	1,000	25 × 50	2.12	0.15	0.199	1.20	LSK102M2C--A2550
	1,000	30 × 40	2.13	0.15	0.199	1.20	LSK102M2C--A3040
	1,000	35 × 30	2.08	0.15	0.199	1.20	LSK102M2C--A3530
	1,200	30 × 45	2.46	0.15	0.166	1.31	LSK122M2C--A3045
	1,200	35 × 35	2.42	0.15	0.166	1.31	LSK122M2C--A3535
	1,500	30 × 50	2.88	0.15	0.133	1.47	LSK152M2C--A3050
	1,500	35 × 40	2.86	0.15	0.133	1.47	LSK152M2C--A3540
1,800	35 × 45	3.29	0.15	0.111	1.50	LSK182M2C--A3545	
200	180	22 × 20	0.59	0.15	1.106	0.57	LSK181M2D--A2220
	220	22 × 25	0.72	0.15	0.905	0.63	LSK221M2D--A2225
	220	25 × 20	0.71	0.15	0.905	0.63	LSK221M2D--A2520
	270	22 × 30	0.81	0.15	0.737	0.70	LSK271M2D--A2230
	270	25 × 25	0.81	0.15	0.737	0.70	LSK271M2D--A2525
	330	22 × 35	0.92	0.15	0.603	0.77	LSK331M2D--A2235
	330	30 × 20	0.87	0.15	0.603	0.77	LSK331M2D--A3020
	390	22 × 40	1.02	0.15	0.510	0.84	LSK391M2D--A2240
	390	25 × 30	1.01	0.15	0.510	0.84	LSK391M2D--A2530
	390	30 × 25	1.01	0.15	0.510	0.84	LSK391M2D--A3025
	390	35 × 20	1.02	0.15	0.510	0.84	LSK391M2D--A3520
	470	22 × 45	1.10	0.15	0.423	0.92	LSK471M2D--A2245
	470	25 × 35	1.15	0.15	0.423	0.92	LSK471M2D--A2535
	470	35 × 20	1.12	0.15	0.423	0.92	LSK471M2D--A3520
	560	22 × 50	1.22	0.15	0.355	1.00	LSK561M2D--A2250
	560	25 × 40	1.19	0.15	0.355	1.00	LSK561M2D--A2540
	560	30 × 30	1.17	0.15	0.355	1.00	LSK561M2D--A3030
	560	35 × 25	1.31	0.15	0.355	1.00	LSK561M2D--A3525
	680	25 × 45	1.38	0.15	0.293	1.11	LSK681M2D--A2545
	680	30 × 35	1.37	0.15	0.293	1.11	LSK681M2D--A3035
	820	30 × 40	1.50	0.15	0.243	1.21	LSK821M2D--A3040
	820	35 × 30	1.46	0.15	0.243	1.21	LSK821M2D--A3530
	1,000	30 × 50	1.91	0.15	0.199	1.34	LSK102M2D--A3050
	1,000	35 × 35	1.72	0.15	0.199	1.34	LSK102M2D--A3535
	1,200	35 × 40	1.93	0.15	0.166	1.47	LSK122M2D--A3540
	1,500	35 × 50	2.37	0.15	0.133	1.50	LSK152M2D--A3550
	1,800	35 × 55	2.70	0.15	0.111	1.50	LSK182M2D--A3555
	250	150	22 × 25	0.57	0.15	1.327	0.58
180		25 × 20	0.61	0.15	1.106	0.64	LSK181M2E--A2520
220		22 × 30	0.68	0.15	0.905	0.70	LSK221M2E--A2230
220		25 × 25	0.75	0.15	0.905	0.70	LSK221M2E--A2525
220		30 × 20	0.77	0.15	0.905	0.70	LSK221M2E--A3020
270		22 × 35	0.78	0.15	0.737	0.78	LSK271M2E--A2235
270		25 × 30	0.83	0.15	0.737	0.78	LSK271M2E--A2530
270		30 × 20	0.79	0.15	0.737	0.78	LSK271M2E--A3020
270		35 × 20	0.86	0.15	0.737	0.78	LSK271M2E--A3520
330		22 × 40	0.91	0.15	0.603	0.86	LSK331M2E--A2240
330		25 × 35	0.96	0.15	0.603	0.86	LSK331M2E--A2535
390		22 × 50	1.08	0.15	0.510	0.94	LSK391M2E--A2250
390		25 × 40	1.07	0.15	0.510	0.94	LSK391M2E--A2540
390		30 × 30	1.07	0.15	0.510	0.94	LSK391M2E--A3030
470		22 × 50	1.12	0.15	0.423	1.03	LSK471M2E--A2250
470		25 × 45	1.15	0.15	0.423	1.03	LSK471M2E--A2545
470		30 × 35	1.19	0.15	0.423	1.03	LSK471M2E--A3035

Dimension and Permissible Ripple Current

Working Voltage V. DC	Capacitance 120Hz, 20°C μF	φ D×L mm	Ripple Current 120 Hz, 105°C A/rms	Tan δ at 120Hz, 20°C	ESR 120Hz, 20°C Ω	LC 5 minutes mA	Part Number
250	470	35 × 25	1.10	0.15	0.423	1.03	LSK471M2E--A3525
	560	25 × 50	1.31	0.15	0.355	1.12	LSK561M2E--A2550
	560	30 × 35	1.25	0.15	0.355	1.12	LSK561M2E--A3035
	560	35 × 30	1.29	0.15	0.355	1.12	LSK561M2E--A3530
	680	30 × 40	1.36	0.15	0.293	1.24	LSK681M2E--A3040
	680	35 × 40	1.57	0.15	0.293	1.24	LSK681M2E--A3540
	820	30 × 50	1.65	0.15	0.243	1.36	LSK821M2E--A3050
	1,000	35 × 40	1.76	0.15	0.199	1.50	LSK102M2E--A3540
315	120	22 × 25	0.51	0.15	1.659	0.58	LSK121M2F--A2225
	150	22 × 30	0.62	0.15	1.327	0.65	LSK151M2F--A2230
	180	22 × 35	0.72	0.15	1.106	0.71	LSK181M2F--A2235
	180	25 × 30	0.73	0.15	1.106	0.71	LSK181M2F--A2530
	220	22 × 40	0.85	0.15	0.905	0.79	LSK221M2F--A2240
	220	25 × 35	0.86	0.15	0.905	0.79	LSK221M2F--A2535
	220	30 × 25	0.84	0.15	0.905	0.79	LSK221M2F--A3025
	270	22 × 45	0.99	0.15	0.737	0.87	LSK271M2F--A2245
	270	25 × 40	1.01	0.15	0.737	0.87	LSK271M2F--A2540
	270	30 × 30	1.00	0.15	0.737	0.87	LSK271M2F--A3030
	330	22 × 55	1.20	0.15	0.603	0.97	LSK331M2F--A2255
	330	25 × 45	1.18	0.15	0.603	0.97	LSK331M2F--A2545
	330	30 × 35	1.17	0.15	0.603	0.97	LSK331M2F--A3035
	330	35 × 25	1.13	0.15	0.603	0.97	LSK331M2F--A3525
	390	25 × 50	1.34	0.15	0.510	1.05	LSK391M2F--A2550
	390	30 × 40	1.35	0.15	0.510	1.05	LSK391M2F--A3040
	390	35 × 30	1.31	0.15	0.510	1.05	LSK391M2F--A3530
	470	30 × 45	1.56	0.15	0.423	1.15	LSK471M2F--A3045
	470	35 × 35	1.53	0.15	0.423	1.15	LSK471M2F--A3535
	560	30 × 50	1.78	0.15	0.355	1.26	LSK561M2F--A3050
560	35 × 40	1.77	0.15	0.355	1.26	LSK561M2F--A3540	
680	35 × 45	2.04	0.15	0.293	1.39	LSK681M2F--A3545	
820	35 × 50	2.35	0.15	0.243	1.50	LSK821M2F--A3550	
350	56	22 × 20	0.32	0.15	3.554	0.42	LSK560M2V--A2220
	68	22 × 25	0.39	0.15	2.927	0.46	LSK680M2V--A2225
	82	22 × 30	0.49	0.15	2.427	0.51	LSK820M2V--A2230
	82	25 × 20	0.44	0.15	2.427	0.51	LSK820M2V--A2520
	100	22 × 25	0.45	0.15	1.990	0.56	LSK101M2V--A2225
	100	25 × 25	0.49	0.15	1.990	0.56	LSK101M2V--A2525
	120	22 × 30	0.53	0.15	1.659	0.61	LSK121M2V--A2230
	120	25 × 30	0.55	0.15	1.659	0.61	LSK121M2V--A2530
	120	30 × 20	0.52	0.15	1.659	0.61	LSK121M2V--A3020
	150	22 × 35	0.58	0.15	1.327	0.69	LSK151M2V--A2235
	150	25 × 25	0.54	0.15	1.327	0.69	LSK151M2V--A2525
	150	30 × 25	0.63	0.15	1.327	0.69	LSK151M2V--A3025
	150	35 × 20	0.64	0.15	1.327	0.69	LSK151M2V--A3520
	180	22 × 40	0.67	0.15	1.106	0.75	LSK181M2V--A2240
	180	25 × 30	0.64	0.15	1.106	0.75	LSK181M2V--A2530
	220	22 × 45	0.78	0.15	0.905	0.83	LSK221M2V--A2245
	220	25 × 35	0.76	0.15	0.905	0.83	LSK221M2V--A2535
	220	30 × 25	0.73	0.15	0.905	0.83	LSK221M2V--A3025
	220	35 × 30	0.87	0.15	0.905	0.83	LSK221M2V--A3530
	270	22 × 50	0.88	0.15	0.737	0.92	LSK271M2V--A2250
	270	25 × 40	0.85	0.15	0.737	0.92	LSK271M2V--A2540
	270	30 × 30	0.84	0.15	0.737	0.92	LSK271M2V--A3030
	270	35 × 25	0.86	0.15	0.737	0.92	LSK271M2V--A3525
	330	25 × 45	0.99	0.15	0.603	1.02	LSK331M2V--A2545
	330	30 × 35	0.99	0.15	0.603	1.02	LSK331M2V--A3035
	390	30 × 40	1.14	0.15	0.510	1.11	LSK391M2V--A3040
	390	35 × 30	1.11	0.15	0.510	1.11	LSK391M2V--A3530
	470	30 × 45	1.19	0.15	0.423	1.22	LSK471M2V--A3045
	470	35 × 35	1.18	0.15	0.423	1.22	LSK471M2V--A3535
	560	30 × 50	1.32	0.15	0.355	1.33	LSK561M2V--A3050
560	35 × 40	1.32	0.15	0.355	1.33	LSK561M2V--A3540	
680	35 × 45	1.52	0.15	0.293	1.46	LSK681M2V--A3545	
820	35 × 50	1.75	0.15	0.243	1.50	LSK821M2V--A3550	

Dimension and Permissible Ripple Current

Working Voltage V. DC	Capacitance 120Hz, 20°C μF	φ D×L mm	Ripple Current 120 Hz, 105°C A/rms	Tan δ at 120Hz, 20°C	ESR 120Hz, 20°C Ω	LC 5 minutes mA	Part Number
400	56	22 × 25	0.34	0.15	3.554	0.45	LSK560M2G--A2225
	68	25 × 20	0.37	0.15	2.927	0.49	LSK680M2G--A2520
	82	22 × 35	0.50	0.15	2.427	0.54	LSK820M2G--A2235
	82	30 × 20	0.50	0.15	2.427	0.54	LSK820M2G--A3020
	100	22 × 30	0.51	0.15	1.990	0.60	LSK101M2G--A2230
	100	25 × 25	0.51	0.15	1.990	0.60	LSK101M2G--A2525
	100	30 × 25	0.58	0.15	1.990	0.60	LSK101M2G--A3025
	120	22 × 35	0.59	0.15	1.659	0.66	LSK121M2G--A2235
	120	25 × 25	0.55	0.15	1.659	0.66	LSK121M2G--A2525
	120	35 × 20	0.65	0.15	1.659	0.66	LSK121M2G--A3520
	150	22 × 40	0.70	0.15	1.327	0.73	LSK151M2G--A2240
	150	25 × 30	0.67	0.15	1.327	0.73	LSK151M2G--A2530
	180	22 × 45	0.81	0.15	1.106	0.80	LSK181M2G--A2245
	180	25 × 35	0.78	0.15	1.106	0.80	LSK181M2G--A2535
	180	30 × 25	0.76	0.15	1.106	0.80	LSK181M2G--A3025
	220	22 × 50	0.94	0.15	0.905	0.89	LSK221M2G--A2250
	220	25 × 40	0.91	0.15	0.905	0.89	LSK221M2G--A2540
	220	30 × 30	0.90	0.15	0.905	0.89	LSK221M2G--A3030
	270	25 × 45	1.06	0.15	0.737	0.99	LSK271M2G--A2545
	270	30 × 35	1.06	0.15	0.737	0.99	LSK271M2G--A3035
	270	35 × 25	1.02	0.15	0.737	0.99	LSK271M2G--A3525
	330	25 × 50	1.23	0.15	0.603	1.09	LSK331M2G--A2550
	330	30 × 40	1.24	0.15	0.603	1.09	LSK331M2G--A3040
	330	35 × 30	1.21	0.15	0.603	1.09	LSK331M2G--A3530
	390	30 × 45	1.42	0.15	0.510	1.18	LSK391M2G--A3045
	390	35 × 35	1.40	0.15	0.510	1.18	LSK391M2G--A3535
	470	30 × 50	1.63	0.15	0.423	1.30	LSK471M2G--A3050
470	35 × 40	1.62	0.15	0.423	1.30	LSK471M2G--A3540	
560	35 × 45	1.86	0.15	0.355	1.42	LSK561M2G--A3545	
420	39	22 × 25	0.25	0.15	5.104	0.38	LSK390M2P--A2225
	68	25 × 25	0.36	0.15	2.927	0.51	LSK680M2P--A2525
	100	22 × 30	0.43	0.15	1.990	0.61	LSK101M2P--A2230
	100	25 × 25	0.43	0.15	1.990	0.61	LSK101M2P--A2525
	120	22 × 35	0.50	0.15	1.659	0.67	LSK121M2P--A2235
	120	35 × 25	0.59	0.15	1.659	0.67	LSK121M2P--A3525
	150	22 × 40	0.61	0.15	1.327	0.75	LSK151M2P--A2240
	150	25 × 30	0.58	0.15	1.327	0.75	LSK151M2P--A2530
	150	30 × 25	0.58	0.15	1.327	0.75	LSK151M2P--A3025
	180	22 × 45	0.70	0.15	1.106	0.82	LSK181M2P--A2245
	180	25 × 35	0.68	0.15	1.106	0.82	LSK181M2P--A2535
	180	30 × 30	0.71	0.15	1.106	0.82	LSK181M2P--A3030
	220	22 × 50	0.82	0.15	0.905	0.91	LSK221M2P--A2250
	220	25 × 40	0.80	0.15	0.905	0.91	LSK221M2P--A2540
	220	30 × 35	0.84	0.15	0.905	0.91	LSK221M2P--A3035
	220	35 × 25	0.78	0.15	0.905	0.91	LSK221M2P--A3525
	270	25 × 45	0.93	0.15	0.737	1.01	LSK271M2P--A2545
	270	30 × 40	0.98	0.15	0.737	1.01	LSK271M2P--A3040
	270	35 × 30	0.92	0.15	0.737	1.01	LSK271M2P--A3530
	330	25 × 55	1.12	0.15	0.603	1.12	LSK331M2P--A2555
	330	30 × 45	1.14	0.15	0.603	1.12	LSK331M2P--A3045
	330	35 × 35	1.09	0.15	0.603	1.12	LSK331M2P--A3535
	390	30 × 50	1.25	0.15	0.510	1.21	LSK391M2P--A3050
	390	35 × 40	1.25	0.15	0.510	1.21	LSK391M2P--A3540
	470	35 × 45	1.44	0.15	0.423	1.33	LSK471M2P--A3545
	560	35 × 50	1.64	0.15	0.355	1.45	LSK561M2P--A3550
	450	39	22 × 25	0.37	0.15	5.104	0.40
68		25 × 25	0.47	0.15	2.927	0.52	LSK680M2W--A2525
82		22 × 30	0.61	0.15	2.427	0.58	LSK820M2W--A2230
100		22 × 45	0.64	0.15	1.990	0.64	LSK101M2W--A2245
100		25 × 25	0.67	0.15	1.990	0.64	LSK101M2W--A2525
100		30 × 25	0.57	0.15	1.990	0.64	LSK101M2W--A3025
120		22 × 35	0.72	0.15	1.659	0.70	LSK121M2W--A2235
120		25 × 30	0.73	0.15	1.659	0.70	LSK121M2W--A2530
150		25 × 35	0.87	0.15	1.327	0.78	LSK151M2W--A2535
150		30 × 30	0.71	0.15	1.327	0.78	LSK151M2W--A3030

Dimension and Permissible Ripple Current

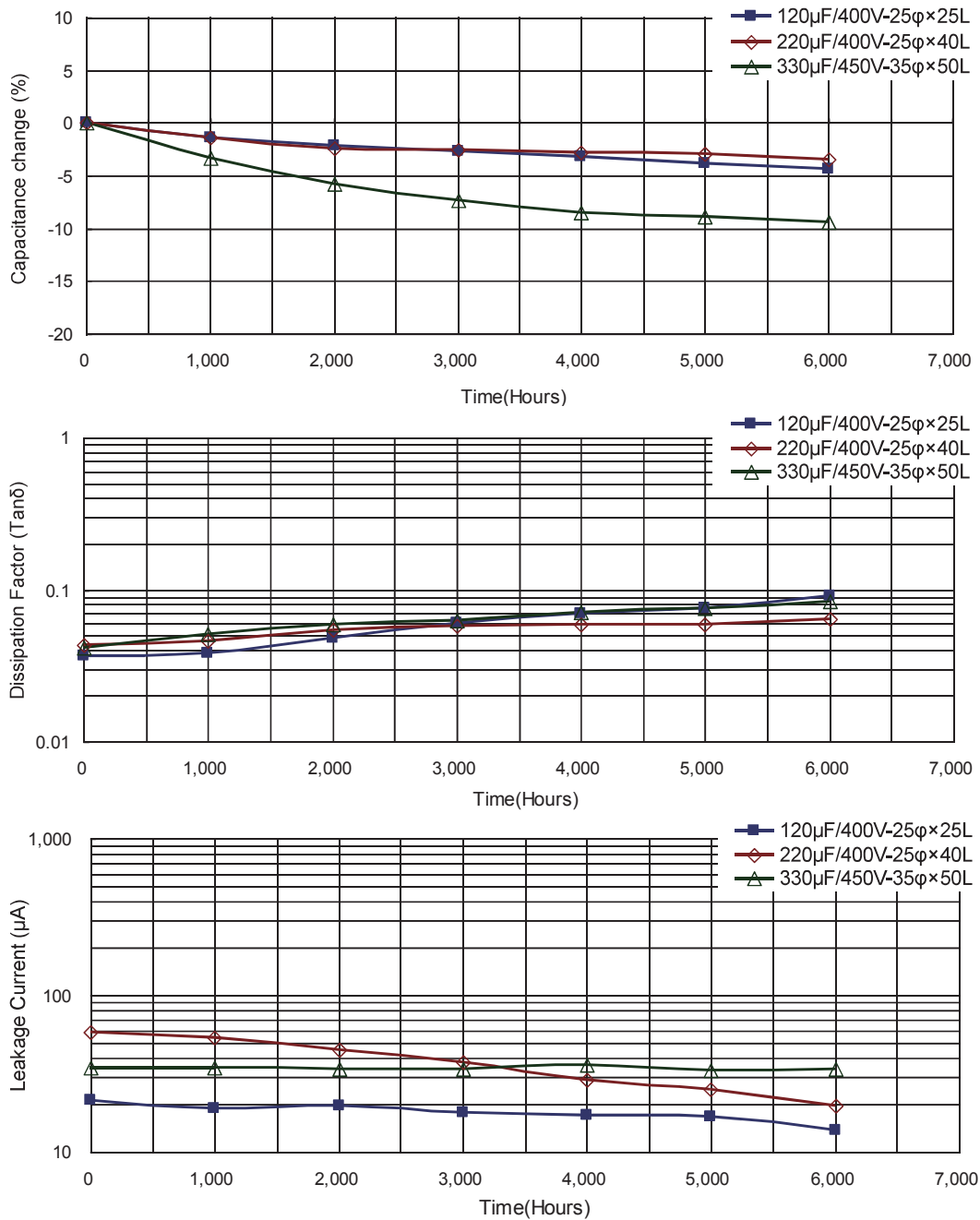
Working Voltage V. DC	Capacitance 120Hz, 20°C μF	φ D×L mm	Ripple Current 120 Hz, 105°C A/rms	Tan δ at 120Hz, 20°C	ESR 120Hz, 20°C Ω	LC 5 minutes mA	Part Number
450	180	22 × 50	0.98	0.15	1.106	0.85	LSK181M2W--A2250
	180	25 × 40	1.01	0.15	1.106	0.85	LSK181M2W--A2540
	180	30 × 30	1.00	0.15	1.106	0.85	LSK181M2W--A3030
	220	25 × 45	1.07	0.15	0.905	0.94	LSK221M2W--A2545
	220	30 × 35	1.07	0.15	0.905	0.94	LSK221M2W--A3035
	220	35 × 25	1.03	0.15	0.905	0.94	LSK221M2W--A3525
	270	30 × 40	1.25	0.15	0.737	1.05	LSK271M2W--A3040
	270	35 × 30	1.30	0.15	0.737	1.05	LSK271M2W--A3530
	330	30 × 45	1.46	0.15	0.603	1.16	LSK331M2W--A3045
	330	35 × 35	1.44	0.15	0.603	1.16	LSK331M2W--A3535
	390	35 × 45	1.69	0.15	0.510	1.26	LSK391M2W--A3545
	470	35 × 50	1.87	0.15	0.423	1.38	LSK471M2W--A3550
500	47	22 × 25	0.30	0.15	4.235	0.46	LSK470M2H--A2225
	56	22 × 30	0.35	0.15	3.554	0.50	LSK560M2H--A2230
	56	25 × 25	0.35	0.15	3.554	0.50	LSK560M2H--A2525
	68	22 × 30	0.39	0.15	2.927	0.55	LSK680M2H--A2230
	68	25 × 30	0.42	0.15	2.927	0.55	LSK680M2H--A2530
	82	22 × 35	0.46	0.15	2.427	0.61	LSK820M2H--A2235
	82	25 × 30	0.46	0.15	2.427	0.61	LSK820M2H--A2530
	100	22 × 40	0.54	0.15	1.990	0.67	LSK101M2H--A2240
	100	25 × 35	0.54	0.15	1.990	0.67	LSK101M2H--A2535
	120	22 × 45	0.62	0.15	1.659	0.73	LSK121M2H--A2245
	120	25 × 40	0.63	0.15	1.659	0.73	LSK121M2H--A2540
	150	22 × 50	0.73	0.15	1.327	0.82	LSK151M2H--A2250
	150	25 × 45	0.75	0.15	1.327	0.82	LSK151M2H--A2545
	150	30 × 30	0.70	0.15	1.327	0.82	LSK151M2H--A3030
	180	25 × 50	0.86	0.15	1.106	0.90	LSK181M2H--A2550
	180	30 × 35	0.81	0.15	1.106	0.90	LSK181M2H--A3035
	220	25 × 50	0.95	0.15	0.905	0.99	LSK221M2H--A2550
	220	30 × 45	1.00	0.15	0.905	0.99	LSK221M2H--A3045
	220	35 × 30	0.93	0.15	0.905	0.99	LSK221M2H--A3530
	270	35 × 35	1.09	0.15	0.737	1.10	LSK271M2H--A3535
330	35 × 40	1.28	0.15	0.603	1.22	LSK331M2H--A3540	

Part Numbering System

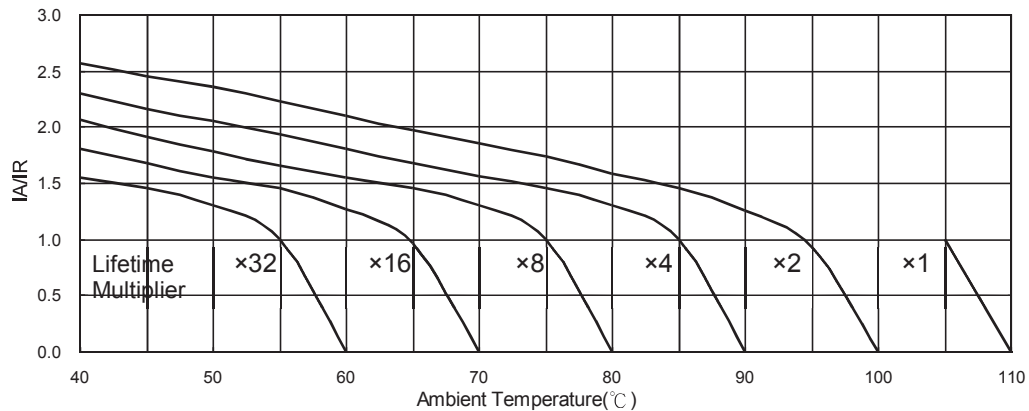
LSK Series	100μF	±20%	400V		4.0±0.5mm	22 φ × 30L	Pb-free Terminal + PET Sleeve																											
LSK	101	M	2G	- -	A	2230																												
Series Name	Capacitance	Capacitance tolerance	Rated voltage	Terminal type	Terminal length	Case size	Terminal and Sleeve Type																											
Example:	Example:	M = ±20% K = ±10%	Example:	Example:	Example:	Example:																												
<table border="1"> <thead> <tr> <th>Cap.</th> <th>Symbol</th> </tr> </thead> <tbody> <tr> <td>56</td> <td>560</td> </tr> <tr> <td>220</td> <td>221</td> </tr> <tr> <td>470</td> <td>471</td> </tr> </tbody> </table>	Cap.	Symbol	56	560	220	221	470	471	<table border="1"> <thead> <tr> <th>WV</th> <th>Symbol</th> </tr> </thead> <tbody> <tr> <td>400</td> <td>2G</td> </tr> <tr> <td>450</td> <td>2W</td> </tr> </tbody> </table>	WV	Symbol	400	2G	450	2W		<table border="1"> <thead> <tr> <th>Type</th> <th>Symbol</th> </tr> </thead> <tbody> <tr> <td>2 pins</td> <td>- -</td> </tr> <tr> <td>5 pins</td> <td>L5</td> </tr> </tbody> </table>	Type	Symbol	2 pins	- -	5 pins	L5	"A": 6.3±1.0 mm	<table border="1"> <thead> <tr> <th>φ D×L</th> <th>Code</th> </tr> </thead> <tbody> <tr> <td>22×30</td> <td>2230</td> </tr> <tr> <td>25×25</td> <td>2525</td> </tr> <tr> <td>30×40</td> <td>3040</td> </tr> </tbody> </table>	φ D×L	Code	22×30	2230	25×25	2525	30×40	3040	
Cap.	Symbol																																	
56	560																																	
220	221																																	
470	471																																	
WV	Symbol																																	
400	2G																																	
450	2W																																	
Type	Symbol																																	
2 pins	- -																																	
5 pins	L5																																	
φ D×L	Code																																	
22×30	2230																																	
25×25	2525																																	
30×40	3040																																	

Note: For more details, please refer to "Part Numbering System (Snap-in Type)" on page 16.

Typical Endurance Curves



Useful Life Chart



IA: Actual Ripple Current IR: Rated Ripple Current

All product specifications in the catalog are subject to change without notice. (CAT. 2017E1)



Компания «ЭлектроПласт» предлагает заключение долгосрочных отношений при поставках импортных электронных компонентов на взаимовыгодных условиях!

Наши преимущества:

- Оперативные поставки широкого спектра электронных компонентов отечественного и импортного производства напрямую от производителей и с крупнейших мировых складов;
- Поставка более 17-ти миллионов наименований электронных компонентов;
- Поставка сложных, дефицитных, либо снятых с производства позиций;
- Оперативные сроки поставки под заказ (от 5 рабочих дней);
- Экспресс доставка в любую точку России;
- Техническая поддержка проекта, помощь в подборе аналогов, поставка прототипов;
- Система менеджмента качества сертифицирована по Международному стандарту ISO 9001;
- Лицензия ФСБ на осуществление работ с использованием сведений, составляющих государственную тайну;
- Поставка специализированных компонентов (Xilinx, Altera, Analog Devices, Intersil, Interpoint, Microsemi, Aeroflex, Peregrine, Syfer, Eurofarad, Texas Instrument, Miteq, Cobham, E2V, MA-COM, Hittite, Mini-Circuits, General Dynamics и др.);

Помимо этого, одним из направлений компании «ЭлектроПласт» является направление «Источники питания». Мы предлагаем Вам помощь Конструкторского отдела:

- Подбор оптимального решения, техническое обоснование при выборе компонента;
- Подбор аналогов;
- Консультации по применению компонента;
- Поставка образцов и прототипов;
- Техническая поддержка проекта;
- Защита от снятия компонента с производства.



Как с нами связаться

Телефон: 8 (812) 309 58 32 (многоканальный)

Факс: 8 (812) 320-02-42

Электронная почта: org@eplast1.ru

Адрес: 198099, г. Санкт-Петербург, ул. Калинина, дом 2, корпус 4, литера А.