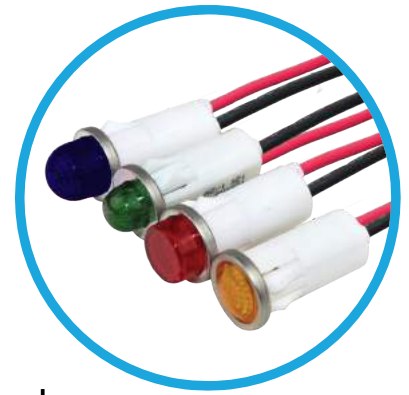
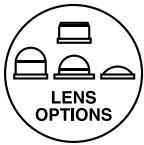




# 1092 Series 0.500" (12.7mm) Wire Leads LED Panel Mount Indicator



1092 Series with high brightness LED offers daylight visibility and enhances the user experience by enabling fast operation of the device



## Application

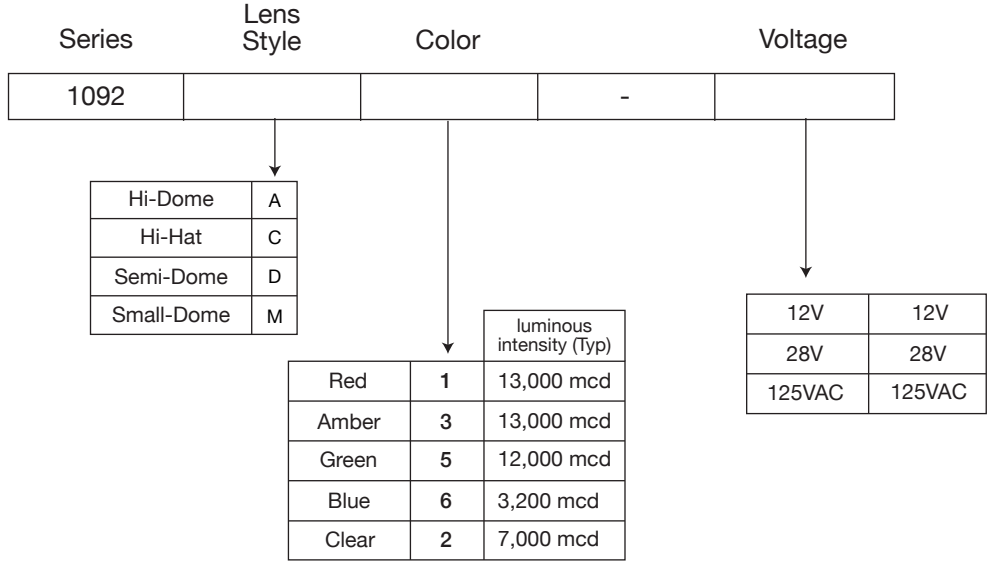
- Industrial
- Transportation
- Food Service
- People Mover
- Medical
- Maritime
- Oil and Gas Industry
- Manufacturing
- Automation & Control

## Key features

- Front panel snap-in. Snaps fit into 0.500" (12.7mm) panel hole requires no additional hardware
- High brightness LED for daylight viewing
- Available in five single LED colors: red, green, amber, blue and white
- Available in five single lens colors: red, green, amber, blue and clear
- Offered with a variety of lens options: Hi Hat, Hi Dome, Semi Dome and Small Dome
- Transparent and diffused lenses provide visibility during daylight
- Available in operating voltage of 12VAC/DC, 28VAC/DC and 125VAC
- Offered with wire leads (4.4"/4.8") or tab terminal (0.187" x .020")
- "Double D" mounting hole prevent any rotation of the indicator while the nut is being installed.
- Bezel finish: Polished stainless steel
- Designed, manufactured and tested in accordance with the relevant UL and CSA standards
- Order speed nuts separately to provide maximum fastening power with minimal installation torque
- Order gasket separately to provide water, oil, air and dust tight
- Compliant with RoHS and REACH requirements

# Ordering Data

The 1092 Series is available in a range of standard features and options. To specify your Panel Mount Indicator, simply choose one option from each column. An example is shown below



**Example:** 1092A5-12V  
 1092 with Hi-Dome lens - Green LED and 12 Volts



## Accessories Ordering Data [order separately]

Speed Nut: SN0461-C

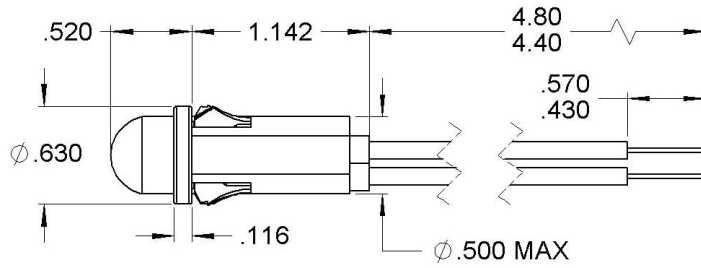
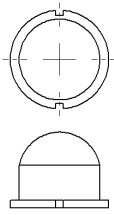


O'Ring Gasket: SPC472

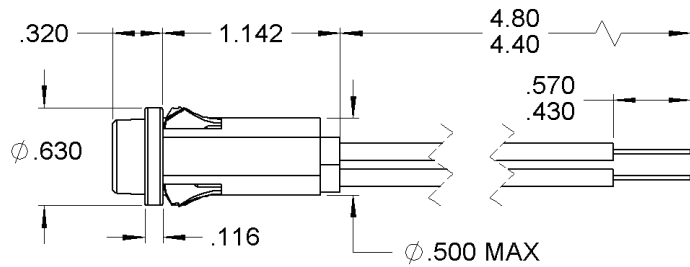
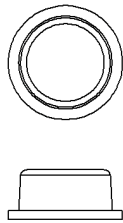


# Product Dimensions

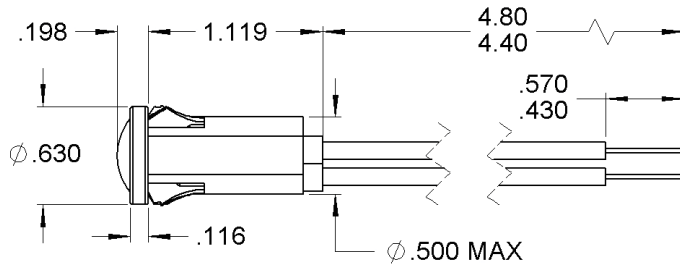
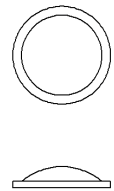
## Hi-Dome



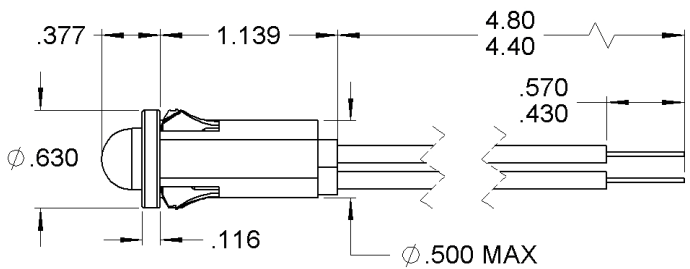
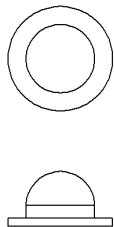
## Hi-Hat



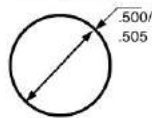
## Semi Dome



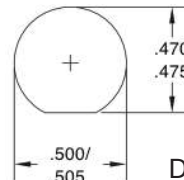
## Small Dome



## Mounting Hole (All)



Standard Mounting Hole



D-Mounting Hole

Dimensions in inches

## Product Specifications

| Materials  |   |
|------------|---|
| Housing    | White Nylon UL94 V-2                      |
| Lens       | Transparent Polycarbonate<br>UL94 V-2     |
| Bezel      | Polished stainless steel                  |
| Wire Leads | Tinned Copper Conductor<br>PVC Insulation |

| Voltage Table |            |          |
|---------------|------------|----------|
| Nominal       | VAC        | VDC      |
| 12V           | 10 to 14   | 10 to 14 |
| 28V           | 26 to 30   | 26 to 30 |
| 125V          | 105 to 125 | -        |

| Temperature Specifications |                                   |
|----------------------------|-----------------------------------|
| Operating Temperature      | -40°C to +85°C<br>-40°F to +185°F |
| Storage Temperature        | -40°C to +85°C<br>-40°F to +185°F |

| Installation Specifications |   |
|-----------------------------|---|
| Mounting Hole               | 0.500" to 0.505"<br>(12.70 to 12.83 mm)   |
| D-Mounting Hole             | 0.470" to 0.475"<br>(11.94 to 12.07 mm)   |
| Panel Thickness             | 0.020" to 0.100"<br>(0.51 to 2.54 mm)   |
| Wire Leads                  | 18 AWG -105°C - 600V<br>lead color: red and black,<br>4.40"/4.80"<br>(111.8/121.9 mm) long,<br>stripped .430"/.570"<br>(10.9/14.5 mm)<br>Anode(+): Red lead |

| Internal Resistor      |                          |
|------------------------|--------------------------|
| 12V                    | 390Ω                     |
| 28V                    | 1200Ω                    |
| 125V                   | 15000Ω + rectifier diode |
| Forward Current Rating | 25mA                     |

## Accessory options [order separately]

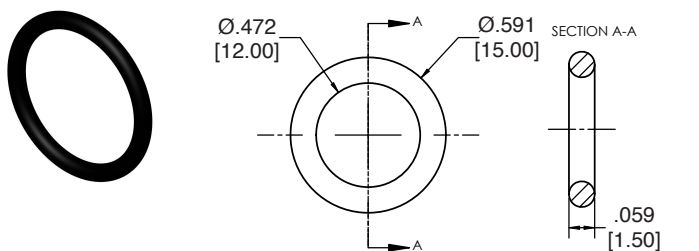
### O-Ring Gasket

Part Number: **SPC472**

The 1092 Gasket is designed to seal many types of media, including water, air, dust, and oil.

The panel gasket is intended to provide a seal between the panel and the 1092 Panel Mount Indicator.

Meets ASTM D2000 standard.



Dimensions in inches [mm]

| Material                     |                 |
|------------------------------|-----------------|
| Buna-N, Durometer A50, black |                 |
| Installation Specification   |                 |
| Internal Diameter            | 0.472" (12 mm)  |
| 28V                          | 0.059" (1.5 mm) |
| Operational Temperature      | -30°F to +225°F |

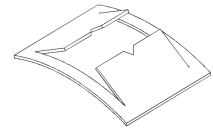
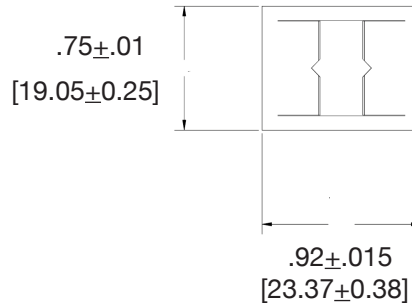
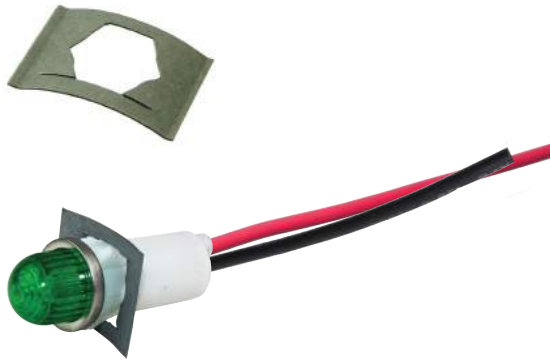
## Accessory options [order separately]

### Push-on speed nut

Part Number: **SN0461-C**

Description: Speed nut with coating, which secures the indicator in place

- One piece, self-locking, heat-treated, spring-steel fastener that replaces threaded nut, lock washer or spanner washer
- Eliminates time-consuming assembly operations
- Fast and easy to apply, the speed nut fastener provides maximum holding power at minimum cost per fastener
- It does not shake loose from vibration, yet can be easily loosened without worry about rust-frozen screw threads
- For smaller components where space is premium
- Requires less torque than standard hex-nuts
- Can be installed prior to painting process so threads won't fill.



Dimensions in inches [mm]

| Material              |              |
|-----------------------|--------------|
| Speed Nut (one piece) | Spring Steel |

| Installation Specification |                   |
|----------------------------|-------------------|
| Stud Size                  | 0.485" (12.319mm) |

## Compliances and Approvals





Компания «ЭлектроПласт» предлагает заключение долгосрочных отношений при поставках импортных электронных компонентов на взаимовыгодных условиях!

Наши преимущества:

- Оперативные поставки широкого спектра электронных компонентов отечественного и импортного производства напрямую от производителей и с крупнейших мировых складов;
- Поставка более 17-ти миллионов наименований электронных компонентов;
- Поставка сложных, дефицитных, либо снятых с производства позиций;
- Оперативные сроки поставки под заказ (от 5 рабочих дней);
- Экспресс доставка в любую точку России;
- Техническая поддержка проекта, помощь в подборе аналогов, поставка прототипов;
- Система менеджмента качества сертифицирована по Международному стандарту ISO 9001;
- Лицензия ФСБ на осуществление работ с использованием сведений, составляющих государственную тайну;
- Поставка специализированных компонентов (Xilinx, Altera, Analog Devices, Intersil, Interpoint, Microsemi, Aeroflex, Peregrine, Syfer, Eurofarad, Texas Instrument, Miteq, Cobham, E2V, MA-COM, Hittite, Mini-Circuits, General Dynamics и др.);

Помимо этого, одним из направлений компании «ЭлектроПласт» является направление «Источники питания». Мы предлагаем Вам помощь Конструкторского отдела:

- Подбор оптимального решения, техническое обоснование при выборе компонента;
- Подбор аналогов;
- Консультации по применению компонента;
- Поставка образцов и прототипов;
- Техническая поддержка проекта;
- Защита от снятия компонента с производства.



#### Как с нами связаться

**Телефон:** 8 (812) 309 58 32 (многоканальный)

**Факс:** 8 (812) 320-02-42

**Электронная почта:** [org@eplast1.ru](mailto:org@eplast1.ru)

**Адрес:** 198099, г. Санкт-Петербург, ул. Калинина, дом 2, корпус 4, литера А.