

**Mini-Mac Applicator  
Rear Feed**

**Application Tooling  
Specification Sheet**

**Order No. 63802-6100**

**FEATURES**

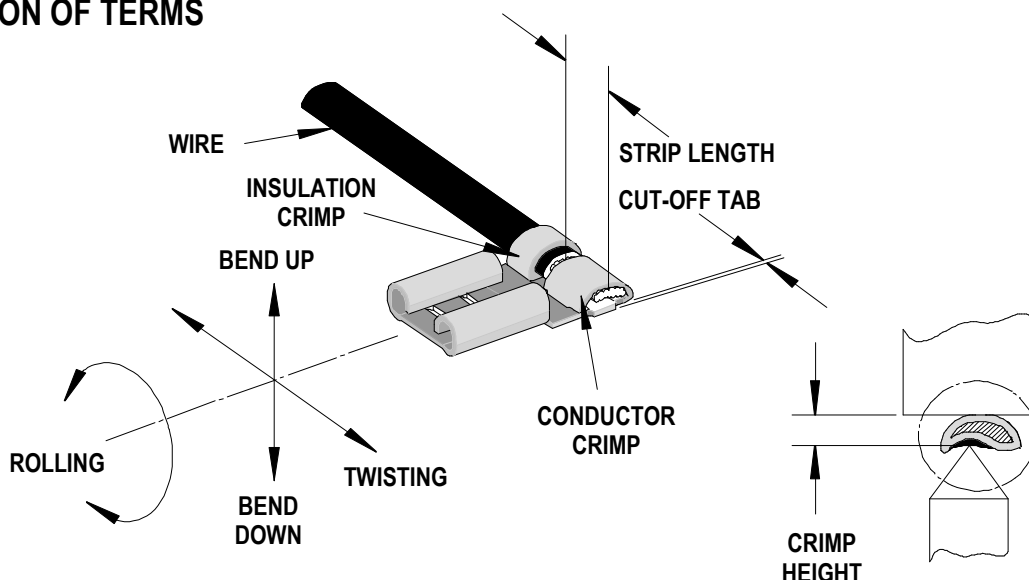
- Directly adapts to most automatic wire processing machines
- Applicator designed to industry standard mounting and shut height 135.80mm (5.346")
- Quick set-up time; plus the crimp height, track and feed adjustments can be set without removing the applicator from the press
- Fine adjustment allows users to achieve target with little effort by adjusting in increments of .015mm (.0006") for conductor crimp height and .063mm (.0025") for insulation height
- Independent adjustment rings allow users to quickly adjust the conductor or insulation crimp height without affecting each other

**SCOPE**

Products: Flag Avikrimp™ and InsulKrimp™ Quick Disconnect Female Terminals, 10-12 AWG.

| Terminal Order No. | Terminal Engineering No. | Wire Size |                 | Tab Size     |              | Insulation Diameter Maximum |      | Strip Length |      |
|--------------------|--------------------------|-----------|-----------------|--------------|--------------|-----------------------------|------|--------------|------|
|                    |                          | AWG       | mm <sup>2</sup> | mm           | In.          | mm                          | In.  | mm           | In.  |
| 19006-0070         | C5211Z                   | 10-12     | 5.00-3.30       | 6.35 by 0.81 | .250 by .032 | 6.65                        | .262 | 8.70         | .344 |
| 19007-0041         | C2211Z                   | 10-12     | 5.00-3.30       | 6.35 by 0.81 | .250 by .032 | 6.65                        | .262 | 8.70         | .344 |

**DEFINITION OF TERMS**

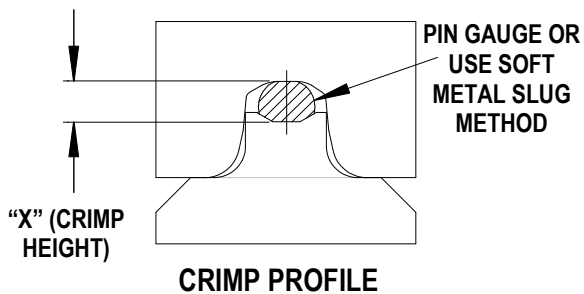


### CRIMP SPECIFICATIONS

| Terminal Order No. | Terminal Eng. No. | Wire Size |                 | Conductor Crimp Height |      |      |      |       |      | Pull Force Minimum |      |
|--------------------|-------------------|-----------|-----------------|------------------------|------|------|------|-------|------|--------------------|------|
|                    |                   |           |                 | Mean                   |      | Go   |      | No Go |      |                    |      |
|                    |                   | AWG       | mm <sup>2</sup> | mm                     | In.  | mm   | In.  | mm    | In.  | N                  | Lb.  |
| 19006-0070         | C5211Z            | 10        | 5.00            | 3.17                   | .125 | 3.09 | .122 | 3.25  | .128 | 356.0              | 80.0 |
|                    |                   | 12        | 3.30            | 3.17                   | .125 | 3.09 | .122 | 3.25  | .128 | 311.5              | 70.0 |
| 19007-0041         | C2211Z            | 10        | 5.00            | 3.17                   | .125 | 3.09 | .122 | 3.25  | .128 | 356.0              | 80.0 |
|                    |                   | 12        | 3.30            | 3.17                   | .125 | 3.09 | .122 | 3.25  | .128 | 311.5              | 70.0 |

► Tool Qualification Notes:

1. Pull Force should be measured with no influence from the insulation crimp.
2. The above specifications are guidelines to an optimum crimp.



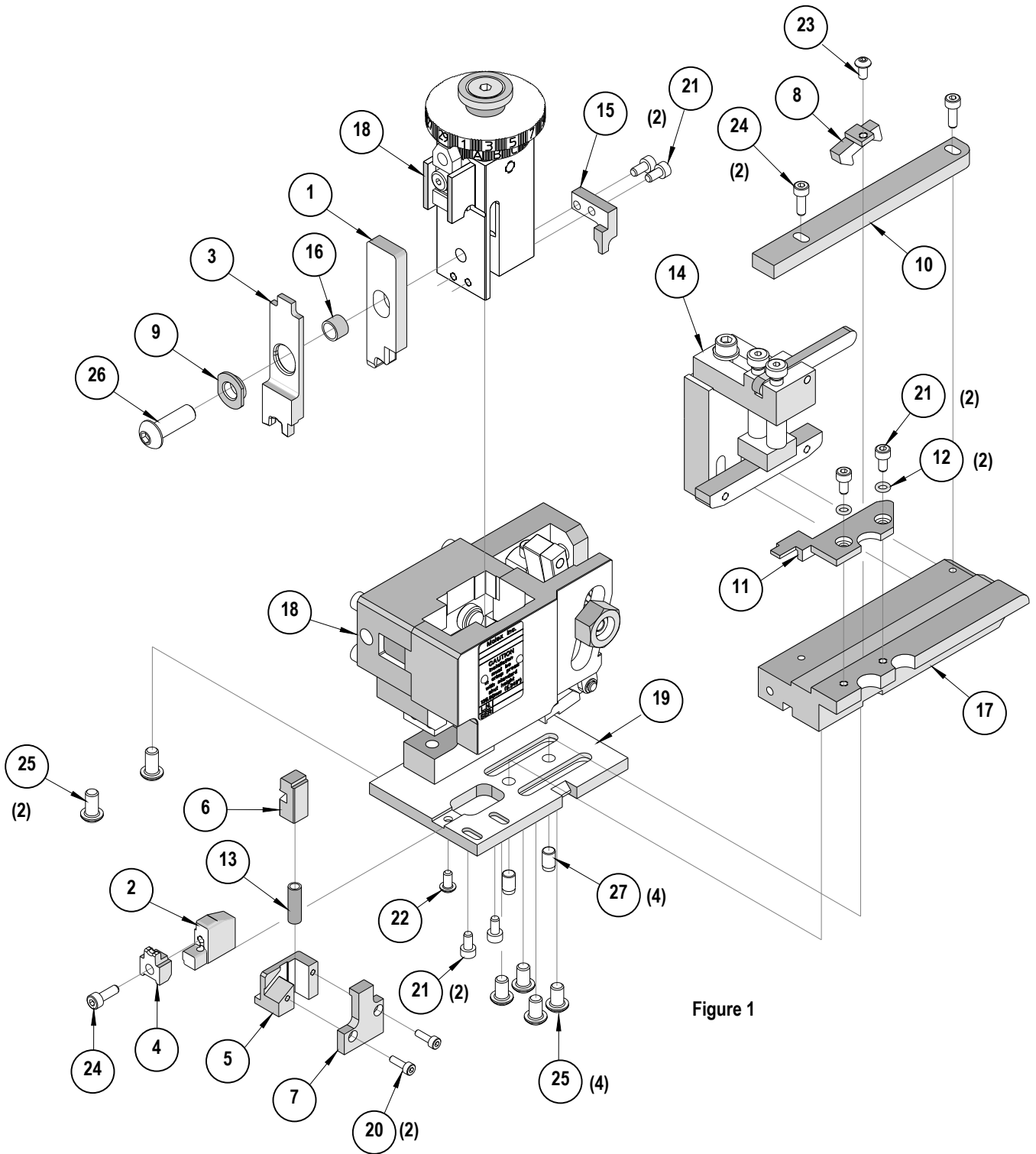
Use gauge pins or soft metal slug (solder) method to measure the "X" dimension. Verify tooling crimp height calibration by referring to the Go/No Go dimensions shown in the chart below.

Molex does not sell gauge pins contact your local industrial supplier.

**PARTS LIST**

| <b>Rear Feed Mini-Mac Applicator 63802-6100</b>                              |                  |                        |                           |                 |
|--|------------------|------------------------|---------------------------|-----------------|
| <b>Item No.</b>  | <b>Order No.</b> | <b>Engineering No.</b> | <b>Description</b>        | <b>Quantity</b> |
| <b>Perishable Tooling</b>  |                  |                        |                           |                 |
|  | 63802-6170       | 63802-6170             | Tool Kit (All "Y" Items)  | REF             |
| 1  | 63801-5510       | 63801-5510             | Conductor Punch (E2 Die)  | 1 Y             |
| 2  | 19803-5161       | 19803-5161             | Conductor Anvil (E1 Die)  | 1 Y             |
| 3  | 63801-5610       | 63801-5610             | Insulation Punch (I2 Die) | 1 Y             |
| 4  | 19803-5171       | 19803-5171             | Insulation Anvil (I1 Die) | 1 Y             |
| 5  | 19229-0120       | 23650-43               | Cutter Housing            | 1 Y             |
| 6  | 19229-0121       | 23650-44               | Cutter Plunger            | 1 Y             |
| <b>Other Components</b>  |                  |                        |                           |                 |
| 7  | 19229-0095       | 23650-45               | Cutter Back Plate         | 1               |
| 8  | 19230-0038       | 24854-08               | Feed Finger               | 1               |
| 9  | 19230-0263       | 19230-0263             | Shoulder Bushing          | 1               |
| 10   | 19230-0101       | 24854-09               | Guide Rail                | 1               |
| 11   | 19230-0176       | 19230-0176             | Guide and Hold Down       | 1               |
| 12   | 19011-0186       | 19011-0186             | O-ring                    | 2               |
| 13   | 19250-0038       | 24855-23               | Compression Spring        | 1               |
| 14   | 63801-2685       | 63801-2685             | Terminal Drag Assembly    | 1               |
| 15   | 63801-7701       | 63801-7701             | Cutter Striker            | 1               |
| 16   | 63803-5134       | 63803-5134             | Conductor Bushing         | 1               |
| <b>Frame</b>   |                  |                        |                           |                 |
| 17   | 19230-0084       | 24854-05               | Slide (Terminal Track)    | 1               |
| 18   | 63801-2600       | 63801-2600             | Rear Feed Frame           | 1               |
| 19   | 63801-2603       | 63801-2603             | Base                      | 1               |
| <b>Hardware</b>  |                  |                        |                           |                 |
| 20   | N/A              | N/A                    | M3 by 10 Long SHCS        | 2**             |
| 21   | N/A              | N/A                    | M4 by 8 Long SHCS         | 6**             |
| 22   | N/A              | N/A                    | M4 by 8 Long BHCS         | 1**             |
| 23   | N/A              | N/A                    | M4 by 10 Long BHCS        | 1**             |
| 24   | N/A              | N/A                    | M4 by 12 Long SHCS        | 3**             |
| 25   | N/A              | N/A                    | M6 by 10 Long BHCS        | 6**             |
| 26   | N/A              | N/A                    | M8 by 20 Long BHCS        | 1**             |
| 27   | N/A              | N/A                    | 6mm by 10 Long Dowel Pin  | 4**             |
| ** Available from an industrial supply company such as MSC (1-800-645-7270). |                  |                        |                           |                 |

### Assembly Drawing



## NOTES

1. Molex recommends an extra perishable tooling kit be maintained at your facility.
2. Verify tooling alignment by manually cycling the press and Applicator before crimping under power. Check that all screws are tight.
3. Slugs, Terminals, Dirt and Oil should be kept clear of work area.
4. Wear safety glasses at all times.
5. For recommended maintenance refer to the Mini-Mac Manual.

**CAUTION:** This applicator should only be used in a press with a shut height of 135.80 mm (5.346"). Tooling damage could result at a lower setting.

**CAUTION:** To prevent injury never operate this Applicator without the guards supplied with the press or wire-processing machine in place. Reference the press or wire processing manufacturer's instruction manual.

**CAUTION:** Molex crimp specifications are valid only when used with Molex terminals, applicators and tooling.

**Wear Safety Glasses At All Times.**

<http://www.molex.com>



Компания «ЭлектроПласт» предлагает заключение долгосрочных отношений при поставках импортных электронных компонентов на взаимовыгодных условиях!

Наши преимущества:

- Оперативные поставки широкого спектра электронных компонентов отечественного и импортного производства напрямую от производителей и с крупнейших мировых складов;
- Поставка более 17-ти миллионов наименований электронных компонентов;
- Поставка сложных, дефицитных, либо снятых с производства позиций;
- Оперативные сроки поставки под заказ (от 5 рабочих дней);
- Экспресс доставка в любую точку России;
- Техническая поддержка проекта, помощь в подборе аналогов, поставка прототипов;
- Система менеджмента качества сертифицирована по Международному стандарту ISO 9001;
- Лицензия ФСБ на осуществление работ с использованием сведений, составляющих государственную тайну;
- Поставка специализированных компонентов (Xilinx, Altera, Analog Devices, Intersil, Interpoint, Microsemi, Aeroflex, Peregrine, Syfer, Eurofarad, Texas Instrument, Miteq, Cobham, E2V, MA-COM, Hittite, Mini-Circuits, General Dynamics и др.);

Помимо этого, одним из направлений компании «ЭлектроПласт» является направление «Источники питания». Мы предлагаем Вам помощь Конструкторского отдела:

- Подбор оптимального решения, техническое обоснование при выборе компонента;
- Подбор аналогов;
- Консультации по применению компонента;
- Поставка образцов и прототипов;
- Техническая поддержка проекта;
- Защита от снятия компонента с производства.



#### Как с нами связаться

**Телефон:** 8 (812) 309 58 32 (многоканальный)

**Факс:** 8 (812) 320-02-42

**Электронная почта:** [org@eplast1.ru](mailto:org@eplast1.ru)

**Адрес:** 198099, г. Санкт-Петербург, ул. Калинина, дом 2, корпус 4, литера А.