

**PLEASE CHECK WWW.MOLEX.COM FOR LATEST PART INFORMATION**

**Part Number:** [0685610016](#)  
**Status:** **Active**  
**Overview:** serial\_ata\_products  
**Description:** 1.27mm (.050") Pitch Serial ATA Straight Latching-to-Right Angle Latching Signal Cable Assembly, 0.50m (1.64' ) Length, Red, Leadfree

**Documents:**

[Drawing \(PDF\)](#) [RoHS Certificate of Compliance \(PDF\)](#)

**General**

Product Family	Cable Assemblies
Series	<a href="#">68561</a>
Comments	Generation 2 (300MB/s)
Connector to Connector	Serial ATA-to-Serial ATA
Overview	<a href="#">serial_ata_products</a>
Product Name	Serial ATA

**Physical**

Cable Length	0.50m (1.64' )
Circuits (Loaded)	7
Color - Resin	Black, Natural
Gender	Female-Female
Lock to Mating Part	Yes
Material - Metal	Stainless Steel
Material - Resin	Low Density Polyethylene, Polyester
Packaging Type	Bag
Pitch - Mating Interface (in)	0.050 In
Pitch - Mating Interface (mm)	1.27 mm
Single Ended	No
Termination Interface: Style	Surface Mount
Wire Insulation Diameter	N/A
Wire Size AWG	26
Wire/Cable Type	PVC

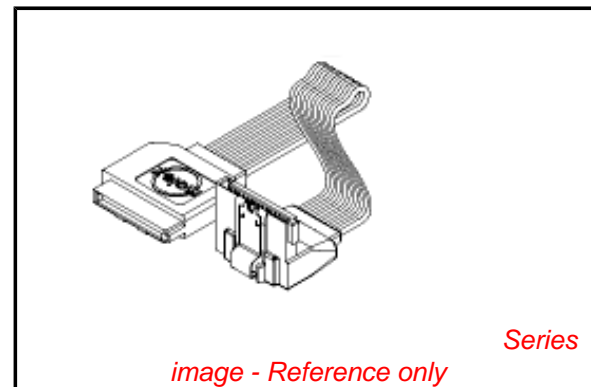
**Electrical**

Current - Maximum per Contact	1.5A
Impedance	100 ohms
Shielded	Yes
Voltage - Maximum	40V

**Material Info**

**Reference - Drawing Numbers**

Sales Drawing [SD-68561-0016](#), [SD-68561-002](#)



**EU RoHS**

**ELV and RoHS  
Compliant**  
**REACH SVHC**  
 Not Reviewed  
**Halogen-Free  
Status**  
**Not Reviewed**

**China RoHS**

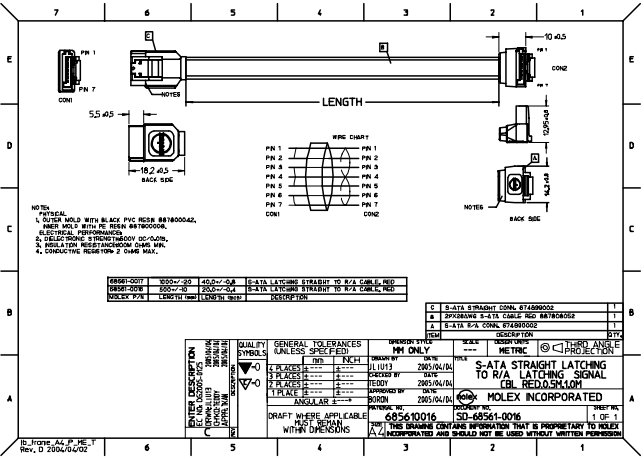


**Need more information on product  
environmental compliance?**

Email [productcompliance@molex.com](mailto:productcompliance@molex.com)  
 For a multiple part number RoHS Certificate of Compliance, [click here](#)

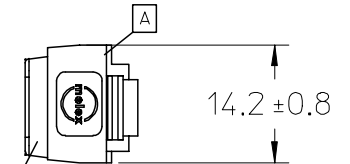
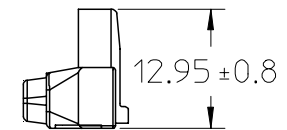
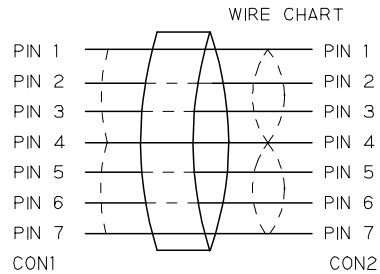
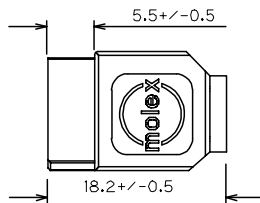
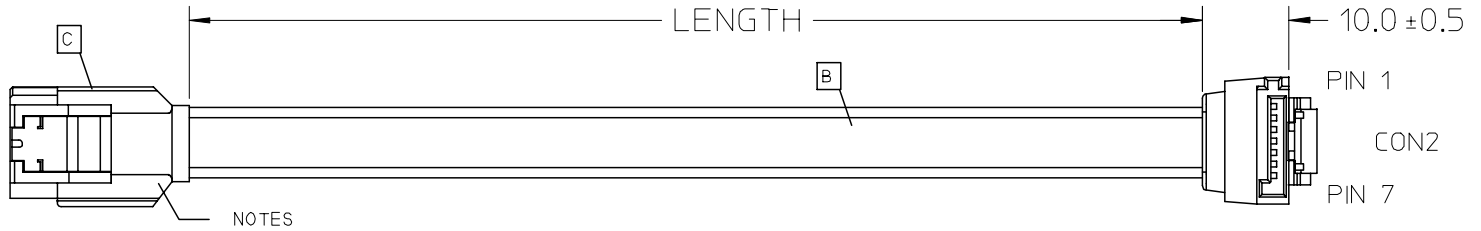
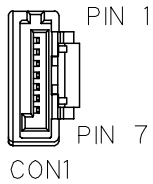
Please visit the [Contact Us](#) section for any non-product compliance questions.

**Search Parts in this Series**  
[68561Series](#)



6	5	4	3	2	1																																																						
<table border="1"> <tr> <td>EC NO. C22005-0098</td> <td>DRWING YANG 04/08/03</td> <td>QUALITY SYMBOLS</td> <td>GENERAL TOLERANCES (UNLESS SPECIFIED)</td> <td>SCALE N.T.S</td> <td>DESIGN UNITS</td> <td>DIMENSIONS</td> <td>SHT</td> <td>REV</td> </tr> <tr> <td>B</td> <td>CHK: APPR:</td> <td>MAJOR ▼ - 0 CRITICAL ▽ - 0</td> <td>mm INCH 4 PLACES PO *. 3 PLACES MO *. 2 PLACES WO *. 1 PLACE NO *.</td> <td>DRAWN BY * DATE GX YANG 04/08/03</td> <td>mm INCH mm ONLY</td> <td>THIRD ANGLE PROJECTION</td> <td></td> <td></td> </tr> <tr> <td>A</td> <td>CHK: APPR:</td> <td></td> <td>ANGULAR * °</td> <td>CHECKED BY * DATE LUCKY 04/08/03</td> <td></td> <td></td> <td></td> <td></td> </tr> <tr> <td colspan="4"></td> <td>APPROVED BY * DATE HANS 04/08/03</td> <td colspan="2">TITLE: S-ATA STRAIGHT LATCHING TO R/A LATCHING SIGNAL CBL RED.0.5M.1.0M</td> <td colspan="2">MATERIAL NO. 68561-0016/17</td> </tr> <tr> <td colspan="4"></td> <td>CAD FILENAME</td> <td colspan="2">DRAWING NO. E-68561-002</td> <td colspan="2">SHEET NO. 1 OF 1</td> </tr> <tr> <td colspan="9" style="text-align: center;">THIS DRAWING CONTAINS INFORMATION THAT IS PROPRIETARY TO MOLEX INCORPORATED AND SHOULD NOT BE USED WITHOUT WRITTEN PERMISSION.</td> </tr> </table>						EC NO. C22005-0098	DRWING YANG 04/08/03	QUALITY SYMBOLS	GENERAL TOLERANCES (UNLESS SPECIFIED)	SCALE N.T.S	DESIGN UNITS	DIMENSIONS	SHT	REV	B	CHK: APPR:	MAJOR ▼ - 0 CRITICAL ▽ - 0	mm INCH 4 PLACES PO *. 3 PLACES MO *. 2 PLACES WO *. 1 PLACE NO *.	DRAWN BY * DATE GX YANG 04/08/03	mm INCH mm ONLY	THIRD ANGLE PROJECTION			A	CHK: APPR:		ANGULAR * °	CHECKED BY * DATE LUCKY 04/08/03									APPROVED BY * DATE HANS 04/08/03	TITLE: S-ATA STRAIGHT LATCHING TO R/A LATCHING SIGNAL CBL RED.0.5M.1.0M		MATERIAL NO. 68561-0016/17						CAD FILENAME	DRAWING NO. E-68561-002		SHEET NO. 1 OF 1		THIS DRAWING CONTAINS INFORMATION THAT IS PROPRIETARY TO MOLEX INCORPORATED AND SHOULD NOT BE USED WITHOUT WRITTEN PERMISSION.								
EC NO. C22005-0098	DRWING YANG 04/08/03	QUALITY SYMBOLS	GENERAL TOLERANCES (UNLESS SPECIFIED)	SCALE N.T.S	DESIGN UNITS	DIMENSIONS	SHT	REV																																																			
B	CHK: APPR:	MAJOR ▼ - 0 CRITICAL ▽ - 0	mm INCH 4 PLACES PO *. 3 PLACES MO *. 2 PLACES WO *. 1 PLACE NO *.	DRAWN BY * DATE GX YANG 04/08/03	mm INCH mm ONLY	THIRD ANGLE PROJECTION																																																					
A	CHK: APPR:		ANGULAR * °	CHECKED BY * DATE LUCKY 04/08/03																																																							
				APPROVED BY * DATE HANS 04/08/03	TITLE: S-ATA STRAIGHT LATCHING TO R/A LATCHING SIGNAL CBL RED.0.5M.1.0M		MATERIAL NO. 68561-0016/17																																																				
				CAD FILENAME	DRAWING NO. E-68561-002		SHEET NO. 1 OF 1																																																				
THIS DRAWING CONTAINS INFORMATION THAT IS PROPRIETARY TO MOLEX INCORPORATED AND SHOULD NOT BE USED WITHOUT WRITTEN PERMISSION.																																																											
<table border="1"> <tr> <td>WBORD_A.BOR REV A</td> <td>97/05/14 LEVEL 3</td> <td></td> <td></td> <td></td> <td></td> </tr> </table>						WBORD_A.BOR REV A	97/05/14 LEVEL 3																																																				
WBORD_A.BOR REV A	97/05/14 LEVEL 3																																																										

7 6 5 4 3 2 1



NOTE:  
PHYSICAL

1. OUTER MOLD WITH BLACK PVC RESIN 887800042

ELECTRICAL PERFORMANCE:

- 2. DIELECTRONIC STRENGTH: 500V DC
- 3. INSULATION RESISTANCE: 100M OHMS
- 4. CONDUCTIVE RESISTOR: 2 OHMS

MOLEX P/N	LENGTH (mm)	LENGTH (inch)	DESCRIPTION
68561-0017	1000+/-20	40.0+/-0.8	S-ATA LATCHING STRAIGHT TO R/A CABLE. RED
68561-0016	500+/-10	20.0+/-0.4	S-ATA LATCHING STRAIGHT TO R/A CABLE. RED

ITEM	DESCRIPTION	L	QTY.
C	S-ATA STRAIGHT CONN. 674899002		1
B	2PX26AWG S-ATA CABLE RED 887808052	N/A	1
A	S-ATA R/A CONN. 674890002		1

ENTER DESCRIPTION EC NO: DG2005-0009 DRWN: GXYANG CHKD: APPR: BOCHEN	2004/08/11 2004/08/18 2004/08/18	QUALITY SYMBOLS ▽=0 ◻=0	GENERAL TOLERANCES (UNLESS SPECIFIED)		DIMENSION STYLE MM ONLY		SCALE ---	DESIGN UNITS METRIC	THIRD ANGLE PROJECTION			
				mm	INCH	DRAWN BY GX YANG	DATE 04/08/10	TITLE S-ATA STRAIGHT LATCHING TO R/A LATCHING SIGNAL CBL RED, 0.5M, 1.0M				
			4 PLACES	±---	±---	CHECKED BY TEDDY	DATE 04/08/10					
			3 PLACES	±---	±---	APPROVED BY BORON	DATE 04/08/10	MOLEX INCORPORATED DOCUMENT NO. SD-68561-002 SHEET NO. 1 OF 1				
2 PLACES	±---	±---	MATERIAL NO. 685610016/7									
1 PLACE	±---	±---	DRAFT WHERE APPLICABLE MUST REMAIN WITHIN DIMENSIONS		SIZE A/4		THIS DRAWING CONTAINS INFORMATION THAT IS PROPRIETARY TO MOLEX INCORPORATED AND SHOULD NOT BE USED WITHOUT WRITTEN PERMISSION					
ANGULAR ±---°												

6 5 4 3 2 1



Компания «ЭлектроПласт» предлагает заключение долгосрочных отношений при поставках импортных электронных компонентов на взаимовыгодных условиях!

Наши преимущества:

- Оперативные поставки широкого спектра электронных компонентов отечественного и импортного производства напрямую от производителей и с крупнейших мировых складов;
- Поставка более 17-ти миллионов наименований электронных компонентов;
- Поставка сложных, дефицитных, либо снятых с производства позиций;
- Оперативные сроки поставки под заказ (от 5 рабочих дней);
- Экспресс доставка в любую точку России;
- Техническая поддержка проекта, помощь в подборе аналогов, поставка прототипов;
- Система менеджмента качества сертифицирована по Международному стандарту ISO 9001;
- Лицензия ФСБ на осуществление работ с использованием сведений, составляющих государственную тайну;
- Поставка специализированных компонентов (Xilinx, Altera, Analog Devices, Intersil, Interpoint, Microsemi, Aeroflex, Peregrine, Syfer, Eurofarad, Texas Instrument, Miteq, Cobham, E2V, MA-COM, Hittite, Mini-Circuits, General Dynamics и др.);

Помимо этого, одним из направлений компании «ЭлектроПласт» является направление «Источники питания». Мы предлагаем Вам помощь Конструкторского отдела:

- Подбор оптимального решения, техническое обоснование при выборе компонента;
- Подбор аналогов;
- Консультации по применению компонента;
- Поставка образцов и прототипов;
- Техническая поддержка проекта;
- Защита от снятия компонента с производства.



#### Как с нами связаться

**Телефон:** 8 (812) 309 58 32 (многоканальный)

**Факс:** 8 (812) 320-02-42

**Электронная почта:** [org@eplast1.ru](mailto:org@eplast1.ru)

**Адрес:** 198099, г. Санкт-Петербург, ул. Калинина, дом 2, корпус 4, литера А.