

LOW VOLTAGE AUDIO POWER AMPLIFIER

■ GENERAL DESCRIPTION

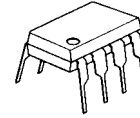
The NJM2113 is a audio power amplifier designed for telephone applications, such as in speakerphones.

Coupling capacitors to the speaker are not required, as it has differential speaker outputs. The closed loop gain is set with two external resistors. A CD pin permit powering down with muting the input signal.

■ FEATURES

- Wide Operating Voltage (2~16V)
- Low Operating Current (2.7mA Typ.)
- CD Input to Power Down the IC with Mute
- Low Power-Down Operating Current (72μA Typ.)
- Output Power Exceeds 250mW ($V^+=6V, R_L=32\Omega$)
- Gain Adjustable ($G_{VD}=0\sim 43dB, \text{Voice Band}$)
- Package Outline DMP8, DIP8, SIP8, SSOP8, VSP8, EMP8
- Bipolar Technology

■ PACKAGE OUTLINE



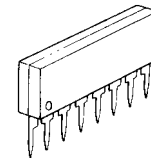
NJM2113D



NJM2113M



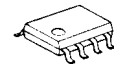
NJM2113V



NJM2113L



NJM2113R

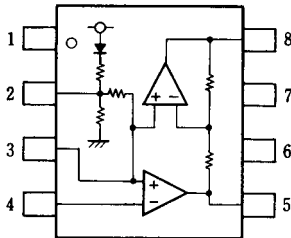


NJM2113E

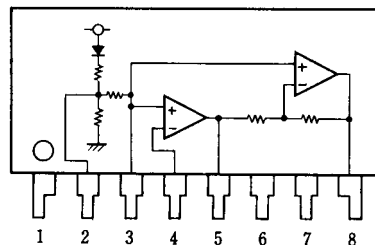
■ RECOMMENDED OPERATING CONDITIONS

- Load Impedance R_L 8~200Ω
- Differential Gain G_{VD} 0~43dB (5kHz bandwidth)
- Input Voltage at CD V_{CD} 0~ V^+V_{dc}

■ PIN CONFIGURATION



NJM2113D
NJM2113M
NJM2113V
NJM2113R

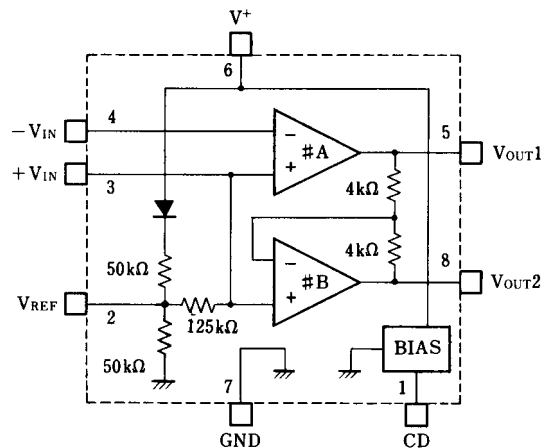


NJM2113L

PIN FUNCTION

1. CD
2. V_{REF}
3. $+V_{IN}$
4. $-V_{IN}$
5. V_{OUT1}
6. V^+
7. GND
8. V_{OUT2}

■ BLOCK DIAGRAM



NJM2113

■ ABSOLUTE MAXIMUM RATINGS

(Ta=25°C)

| PARAMETER | SYMBOL | RATINGS | UNIT |
|-----------------------------|------------------|---|------|
| Supply Voltage | V ⁺ | +18 | V |
| Output Peak Current | I _{OP} | ± 250 | mA |
| Input Voltage Range | V _{IN} | (1~4pin)-0.3 to V ⁺ +0.3 (5,8pin)-0.3 to V ⁺ +0.3 (when Power-Down) | V |
| Power Dissipation | P _D | (DIP8) 500 (SIP8) 800 (DMP8) 500 (note1) (SSOP8) 360 (note1) (VSP8) 320 (EMP8) 300 | mW |
| Operating Temperature Range | T _{opr} | -20~+75 | °C |
| Storage Temperature Range | T _{stg} | -40~+125 | °C |

(note1) Mounted on PC Board

■ ELECTRICAL CHARACTERISTICS

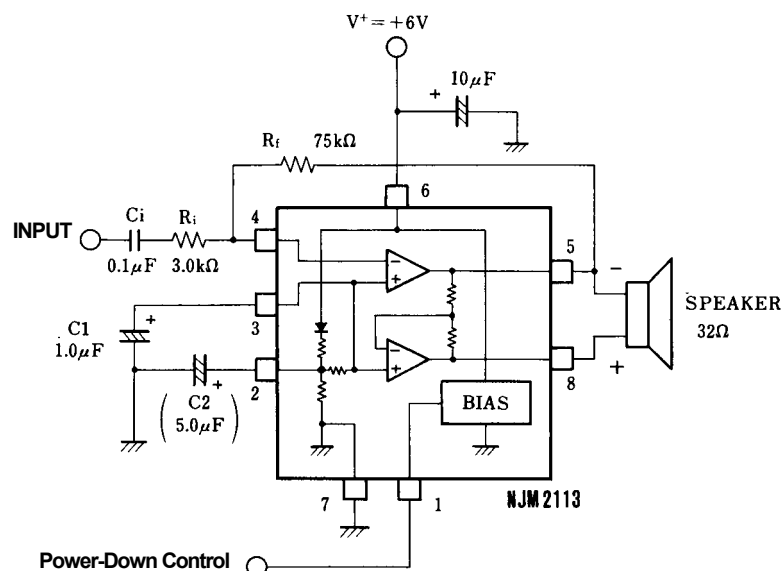
(V⁺=6V, Ta=25°C, unless otherwise specified)

| PARAMETER | SYMBOL | TEST CONDITION | MIN. | TYP. | MAX. | UNIT |
|---|------------------|--|-------|---------------------|----------------|------|
| Operating Current (no signal) | I _{CC1} | V ⁺ =3.0V, R _L =∞, 1pin=0.8V | - | 2.7 | 4.0 | mA |
| | I _{CC2} | V ⁺ =16.0V, R _L =∞, 1pin=0.8V | - | 3.4 | 5.0 | mA |
| | I _{CCD} | V ⁺ =3.0V, R _L =∞, 1pin=2.0V | - | 72 | 100 | μA |
| Open Loop Gain | A _{V1} | Amplifier#A, f<100Hz | 77 | 83 | - | dB |
| Closed Loop Gain | A _{V2} | Amplifier#B, f=1kHz, R _L =32Ω | -0.35 | 0 | +0.35 | dB |
| Output Power (note2) | P _{O1} | V ⁺ =3.0V, R _L =16Ω, THD≤10% | 55 | - | - | mW |
| | P _{O2} | V ⁺ =6.0V, R _L =32Ω, THD≤10% | 250 | - | - | mW |
| | P _{O3} | V ⁺ =12.0V, R _L =100Ω, THD≤10% (note3) | 400 | - | - | mW |
| Total Harmonic Distortion (f=1kHz) | THD1 | V ⁺ =6V, R _L =32Ω, P _O =125mW, G _{VD} =34dB | - | 0.5 | 1.0 | % |
| | THD2 | V ⁺ ≥3V, R _L =8Ω, P _O =20mW, G _{VD} =12dB | - | 0.5 | - | % |
| | THD3 | V ⁺ ≥12V, R _L =32Ω, P _O =200mW, G _{VD} =34dB | - | 0.6 | - | % |
| Power Supply Rejection Ratio (V ⁺ =6.0V, ΔV ⁺ =3.0V) | PSRR1 | C1=∞, C2=0.01μF, DC | 50 | - | - | dB |
| | PSRR2 | C1=0.1μF, C2=0, f=1kHz | - | 12 | - | dB |
| | PSRR3 | C1=1.0μF, C2=5.0μF, f=1kHz | - | 52 | - | dB |
| Mute Attenuation | MAT | f=1kHz~20kHz, 1pin=2.0V | - | 70 | - | dB |
| Output Voltage (R _f =75kΩ, DC) | V _{O1} | V ⁺ =3.0V, R _L =16Ω | 1.00 | 1.18 | 1.25 | V |
| | V _{O2} | V ⁺ =6.0V | - | 2.68 | - | V |
| | V _{O3} | V ⁺ =12.0V | - | 5.71 | - | V |
| Output High Level | V _{OH} | I _{OUT} =-75mA, V ⁺ =2.0~16.0V | - | V ⁺ -1.1 | - | V |
| Output Low Level | V _{OL} | I _{OUT} =75mA, V ⁺ =2.0~16.0V | - | 0.21 | - | V |
| Output DC Offset | ΔV _O | R _f =75kΩ, R _L =32Ω, 5pin~8pin | -30 | 0 | +30 | mV |
| Input Bias Current Equivalent Resistance | I _B | 4pin | - | -30 | -200 | nA |
| | R _{HIN} | 3pin | 100 | 150 | 220 | kΩ |
| | R _{REF} | 2pin | 18 | 25 | 40 | kΩ |
| CD Input Voltage H | V _{CDH} | 1pin | 2.0 | - | V ⁺ | V |
| CD Input Voltage L | V _{CDL} | 1pin | 0.0 | - | 0.8 | V |
| CD Input Resistance | R _{CD} | V _{CD} =16.0V, 1pin | 50 | 75 | 175 | kΩ |

(note2) NJM2113M, NJM2113V : At on PC Board

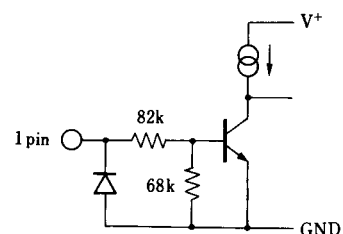
(note3) Not specified for NJM2113V, NJM2113R

■ APPLICATION CIRCUIT

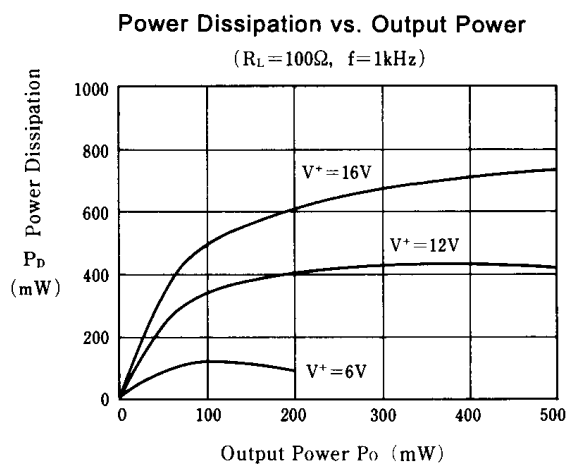
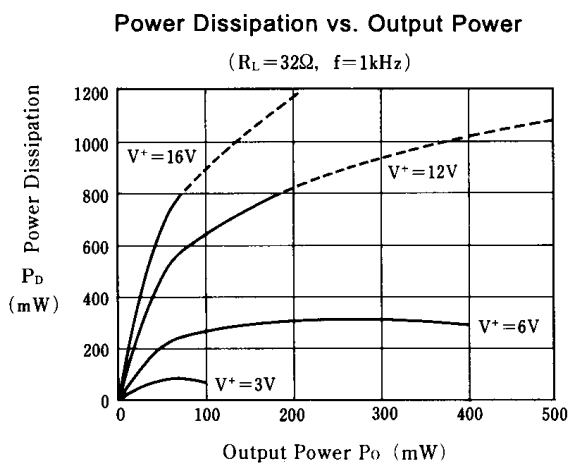
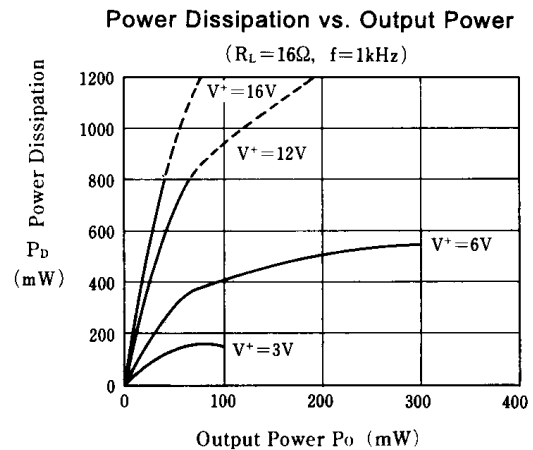
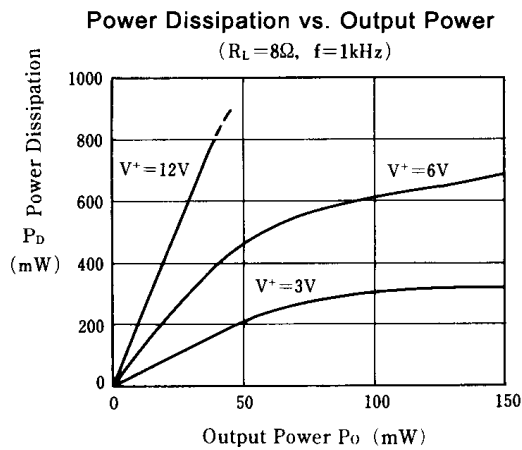
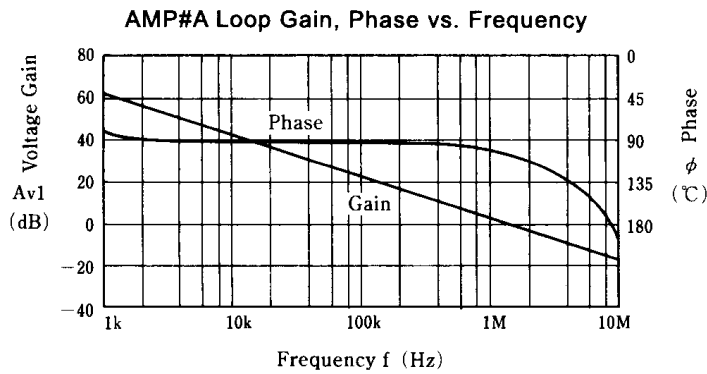


(note)

1. The NJM2113 is active mode during the CD terminal is Low level ($<0.8V$) and it is stand-by mode during the CD terminal is High level ($>2.0V$)
2. C1 and C2 improve power supply rejection ratio.
In case of C1 is enough large, C2 is unnecessary.
3. Please note that the C1 and C2 make slow power rise up to the NJM2113 regardless the external power supply condition.
4. Input current flow on the internal resistor shown in the equivalent circuit of CD terminal.
5. No snubber resistor and capacitor are required normally.
But the snubber resistor and capacitor are required if the NJM2113 oscillates by Condition of PCB layout, stray capacitor and speaker wire length.



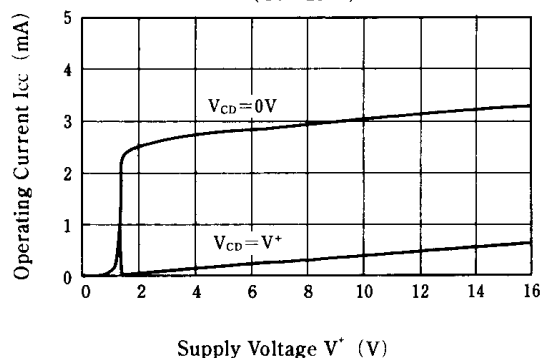
■ TYPICAL CHARACTERISTICS



■ TYPICAL CHARACTERISTICS

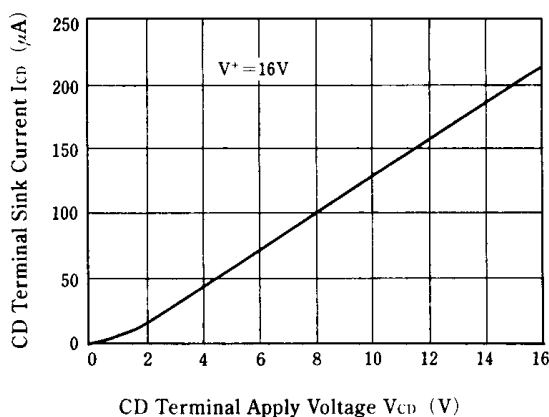
Operating Current vs. Supply Voltage

($T_a=25^\circ\text{C}$)



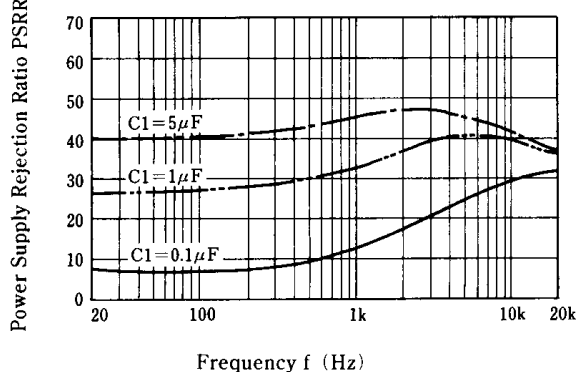
CD Terminal Sink Current vs. Apply Voltage

$V^+=16\text{V}$



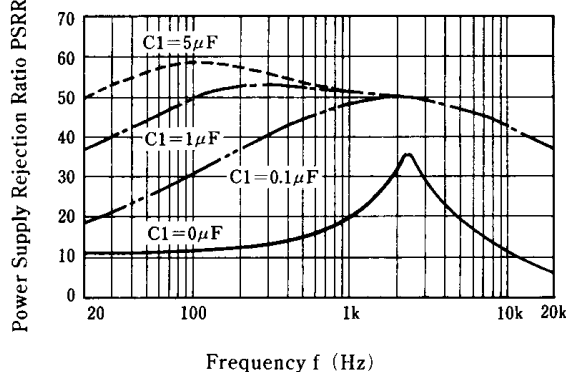
Power Supply Rejection Ratio vs. Frequency

($C_2=0\mu\text{F}$)



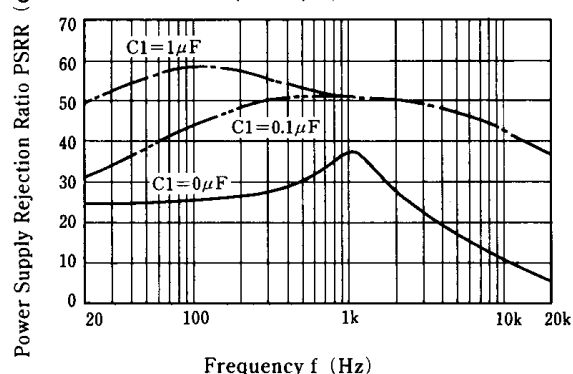
Power Supply Rejection Ratio vs. Frequency

($C_2=1\mu\text{F}$)



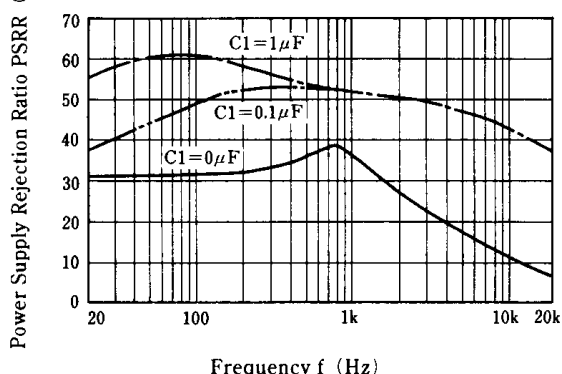
Power Supply Rejection Ratio vs. Frequency

($C_2=5\mu\text{F}$)

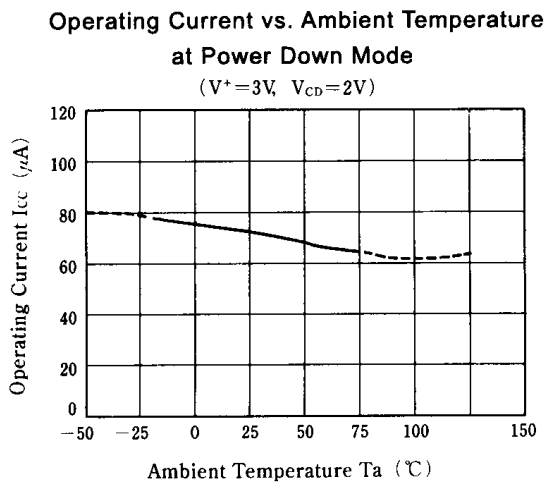
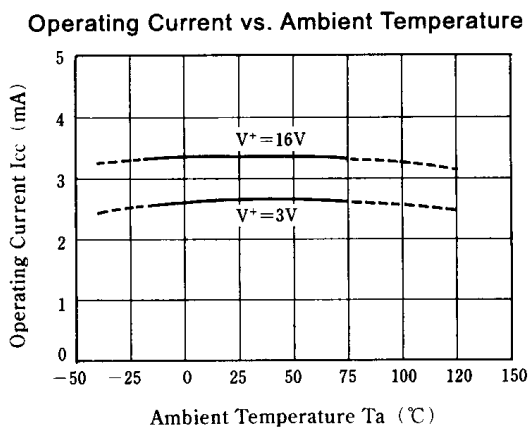
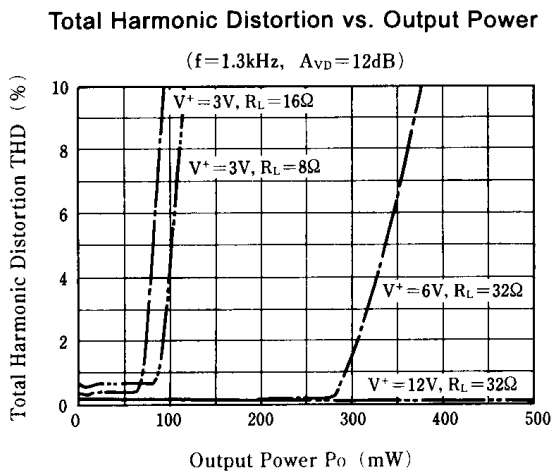
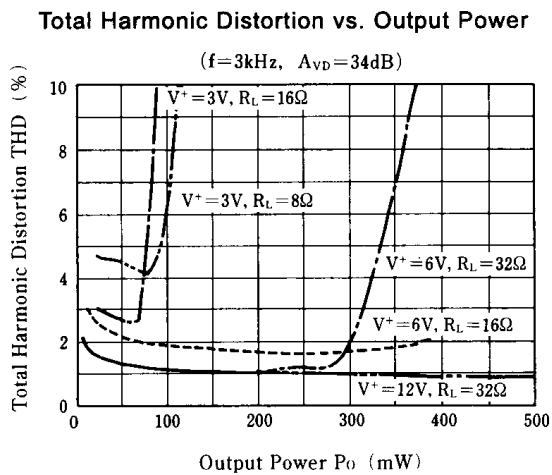
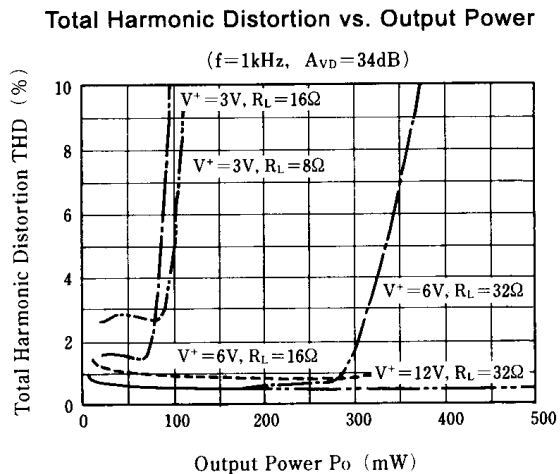


Power Supply Rejection Ratio vs. Frequency

($C_2=10\mu\text{F}$)



■ TYPICAL CHARACTERISTICS



[CAUTION]
The specifications on this databook are only given for information, without any guarantee as regards either mistakes or omissions. The application circuits in this databook are described only to show representative usages of the product and not intended for the guarantee or permission of any right including the industrial rights.



Компания «ЭлектроПласт» предлагает заключение долгосрочных отношений при поставках импортных электронных компонентов на взаимовыгодных условиях!

Наши преимущества:

- Оперативные поставки широкого спектра электронных компонентов отечественного и импортного производства напрямую от производителей и с крупнейших мировых складов;
- Поставка более 17-ти миллионов наименований электронных компонентов;
- Поставка сложных, дефицитных, либо снятых с производства позиций;
- Оперативные сроки поставки под заказ (от 5 рабочих дней);
- Экспресс доставка в любую точку России;
- Техническая поддержка проекта, помощь в подборе аналогов, поставка прототипов;
- Система менеджмента качества сертифицирована по Международному стандарту ISO 9001;
- Лицензия ФСБ на осуществление работ с использованием сведений, составляющих государственную тайну;
- Поставка специализированных компонентов (Xilinx, Altera, Analog Devices, Intersil, Interpoint, Microsemi, Aeroflex, Peregrine, Syfer, Eurofarad, Texas Instrument, Miteq, Cobham, E2V, MA-COM, Hittite, Mini-Circuits, General Dynamics и др.);

Помимо этого, одним из направлений компании «ЭлектроПласт» является направление «Источники питания». Мы предлагаем Вам помощь Конструкторского отдела:

- Подбор оптимального решения, техническое обоснование при выборе компонента;
- Подбор аналогов;
- Консультации по применению компонента;
- Поставка образцов и прототипов;
- Техническая поддержка проекта;
- Защита от снятия компонента с производства.



Как с нами связаться

Телефон: 8 (812) 309 58 32 (многоканальный)

Факс: 8 (812) 320-02-42

Электронная почта: org@eplast1.ru

Адрес: 198099, г. Санкт-Петербург, ул. Калинина, дом 2, корпус 4, литера А.