



Designed to reduce conducted mains borne EMI, this extensive range provides many solutions to EMI problems. To meet individual design requirements the filters are available with two attenuation options – standard and medical. Current ratings are from 1 to 10 amps with single or twin fused types also available.

The choice of mounting options will suit most applications with flange, snap to panel or base/bulkhead.

Flange and Snap Fit

| | |
|-------------|---------|
| PS00 Series | 314-315 |
| PS01 Series | 314-315 |

Base Mounting and Bulkhead

| | |
|-------------|---------|
| PS02 Series | 316-317 |
| PS03 Series | 316-317 |

Fused Inlets

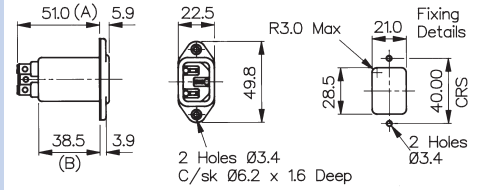
| | |
|-------------|---------|
| PS20 Series | 318-319 |
| PS21 Series | 318-319 |
| PS25 Series | 320-321 |
| PS26 Series | 320-321 |

Panel Mounting



Flange PS00/A

- 1, 3, 6 or 10 Amp Current Rating
- 3 Alternative Circuits
- No additional components
- 6.3mm tabs



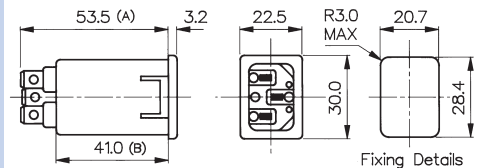
WHEN 10A VERSION 2 or SURGE PROTECTION (ALL RATINGS) REQUIRED A = 60.2 B = 47.7

Snap Fit



Snap Fit PS01/A

- 1, 3, 6 or 10 Amp Current Rating
- 3 Alternative Circuits
- No additional components
- 6.3mm tabs
- 1, 1.5, 2 or 3mm panels



WHEN 10A VERSION 2 or SURGE PROTECTION (ALL VERSIONS) REQUIRED A = 62.7 B = 50.2

How to order -

| | | | | | | | |
|------------------|---------------|--------------------|------------------------------|---|-----------------------------------|------------------------|------------------------------|
| PS00/A or PS01/A | XX | X | 0 | / | 63 | XX | |
| Series | Rating | L/C Circuit | Additional Components | | Tag Type and Configuration | Panel Thickness | Circuit Board Diagram |
| PS00/A | 01 = 1A | 1 = Version 1 | 0 = None | | 63 = 6.3mm tabs | 00 = Flange | |
| PS01/A | 03 = 3A | 2 = Version 2 | | | | 10 = 1.0mm | |
| | 06 = 6A | 3 = Version 3 | | | | 15 = 1.5mm | |
| | 10 = 10A | | | | | 20 = 2.0mm | |
| | | | | | | 30 = 3.0mm | |

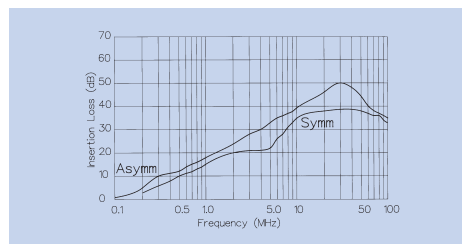
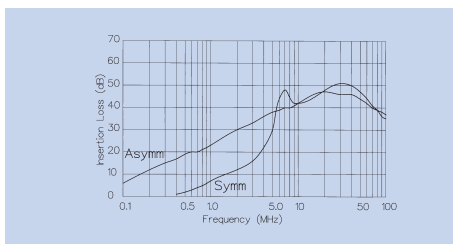
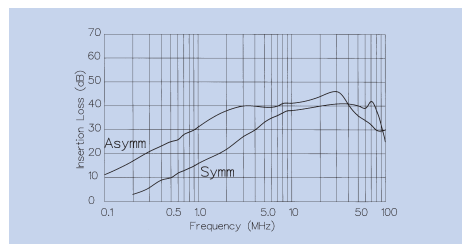
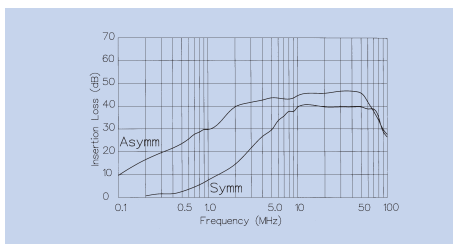
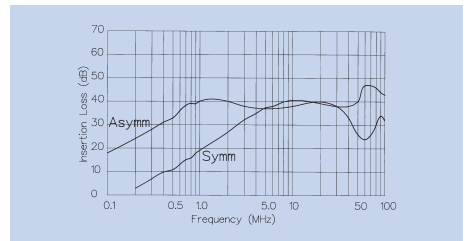
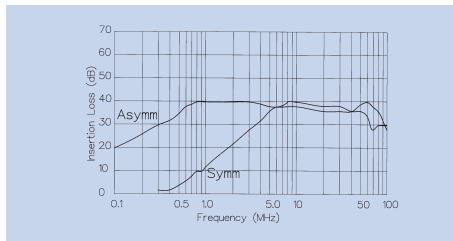
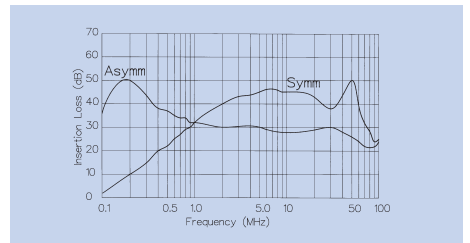
| Specification | PS00/Axxxx/xx00 | PS01/Axxxx/xxxx | Part No. Example |
|----------------------------------|---|---|--|
| Max. Working Voltage: | 250V a.c. 50-400Hz | 250V a.c. 50-400Hz | PS00/A0120/6300 |
| Earth Leakage Current: | <0.35mA (250V, 50Hz) | <0.35mA (250V, 50Hz) | PS00 series, flange fitting, standard filtered IEC power inlet, rated at 1 ampere. L/C circuit version 2, i.e. L1 = 2 x 10mH, Cx = 15nF, Cy = 2 x 2.2nF. 6.3mm tabs. |
| Temperature Range: | -25°C to +85°C | -25°C to +85°C | |
| Max. Ambient Temp: (@ Full Load) | 40°C (derate linearly to 0A @ 85°C) | 40°C (derate linearly to 0A @ 85°C) | |
| Test Voltage: | 2700V d.c. 2 secs. Lines to Earth 1100V d.c. 2 secs. Live to Neutral | 2700V d.c. 2 secs. Lines to Earth 1100V d.c. 2 secs. Live to Neutral | |
| Approvals: | | | |
| Mating Connectors: | PX0587, PX0587/SE, PX0588 | PX0587, PX0587/SE, PX0588 | |
| RoHS | Compliant | Compliant | |

| Rating | Version | L1 | Cx | Cy |
|--------|---------|------------|----------|-----------|
| 1 AMP | 1 | 2 x 2.8mH | 1 x 15nF | 2 x 2.2nF |
| " | 2 | 2 x 10mH | 1 x 15nF | 2 x 2.2nF |
| " | 3 | 2 x 10mH | 1 x 47nF | 2 x 2.2nF |
| 3 AMP | 1 | 2 x 0.75mH | 1 x 15nF | 2 x 2.2nF |
| " | 2 | 2 x 1.8mH | 1 x 15nF | 2 x 2.2nF |
| " | 3 | 2 x 1.8mH | 1 x 47nF | 2 x 2.2nF |
| 6 AMP | 1 | 2 x 0.3mH | 1 x 15nF | 2 x 2.2nF |
| " | 2 | 2 x 0.7mH | 1 x 15nF | 2 x 2.2nF |
| " | 3 | 2 x 0.7mH | 1 x 47nF | 2 x 2.2nF |
| 10 AMP | 1 | 2 x 0.17mH | 1 x 15nF | 2 x 2.2nF |
| " | 2 | 2 x 0.35mH | 1 x 15nF | 2 x 2.2nF |
| " | 3 | 2 x 0.17mH | 1 x 47nF | 2 x 2.2nF |

Version 1

Version 2

Version 3

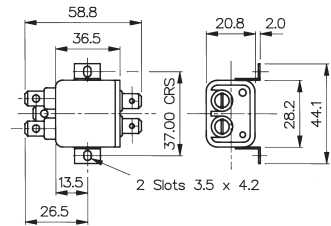


Base Mounting



Base Mounting PS02/A

- 1, 3, 6 or 10 Amp Current Rating
- 3 Alternative Circuits
- No additional components
- 6.3mm tabs

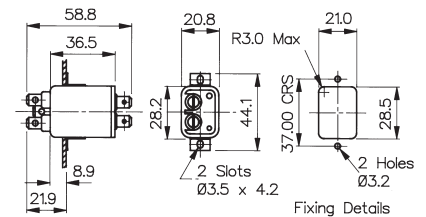


Bulkhead Mounting



Bulkhead Mounting PS03/A

- 1, 3, 6 or 10 Amp Current Rating
- 3 Alternative Circuits
- No additional components
- 6.3mm tabs



How to order -

| | | | | | | |
|------------------------|---------------|--------------------|------------------------------|----------|-----------------------------------|------------------------------|
| PS02/A or PS03/A | XX | X | 0 | / | 63 | |
| Series | Rating | L/C Circuit | Additional Components | | Tag Type and Configuration | Circuit Board Diagram |
| PS02/A | 01 = 1A | 1 = Version 1 | 0 = None | | 63 = 6.3mm tabs | |
| PS03/A | 03 = 3A | 2 = Version 2 | | | | |
| | 06 = 6A | 3 = Version 3 | | | | |
| | 10 = 10A | | | | | |

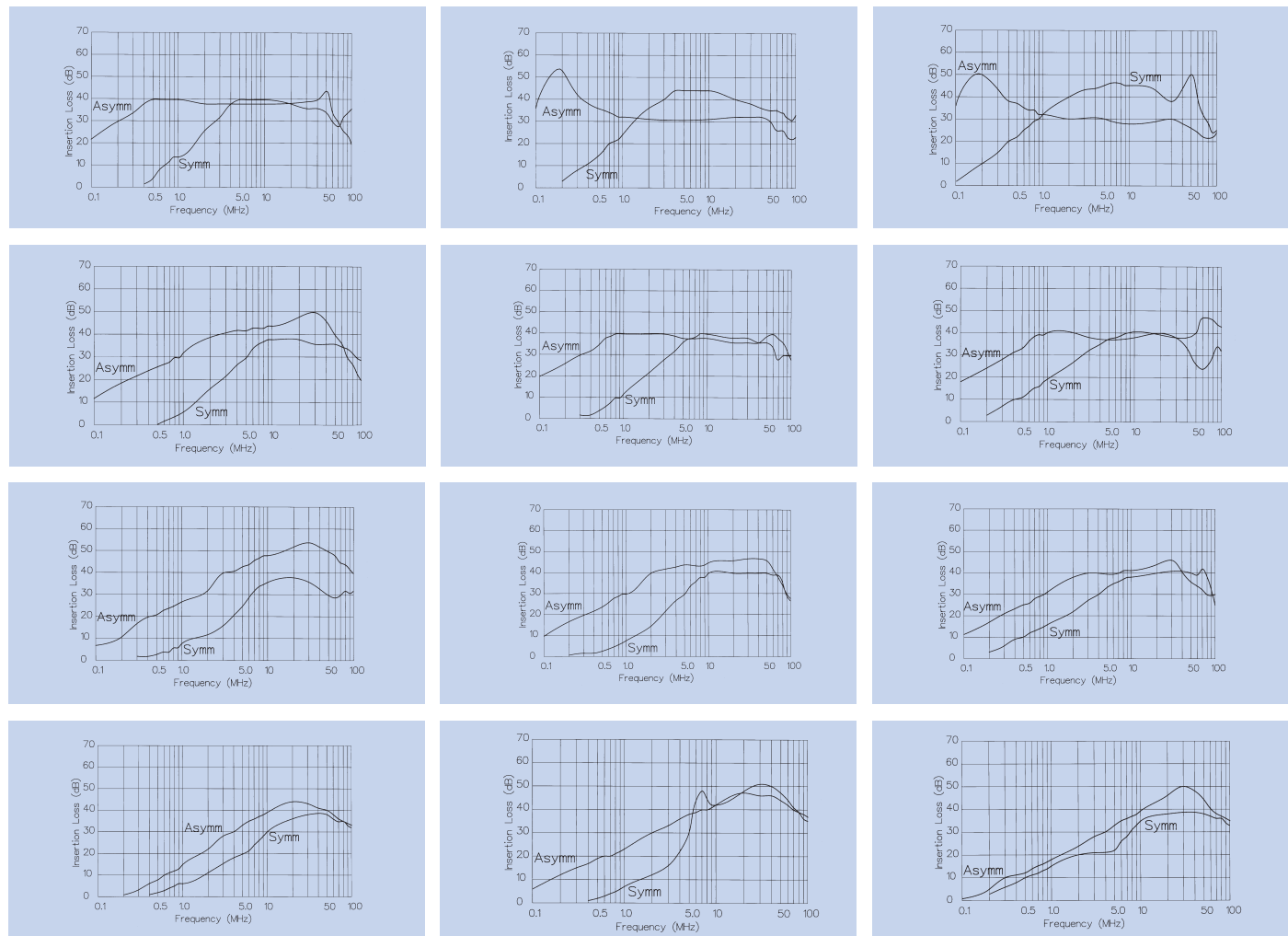
| Specification | PS02/Axxxx/xx | PS03/Axxxx/xx | Part No. Example |
|----------------------------------|---|---|---|
| Max. Working Voltage: | 250V a.c. 50-400Hz | 250V a.c. 50-400Hz | PS02/A0120/63 |
| Earth Leakage Current: | <0.35mA (250V, 50Hz) | <0.35mA (250V, 50Hz) | PS02 series, standard base mounting filter, rated at 3 amperes. L/C circuit version 1, i.e. L1 = 2 x 0.75mH, Cx = 15nF, Cy = 2 x 2.2nF with 2.8mm tabs. |
| Temperature Range: | -25°C to +85°C | -25°C to +85°C | |
| Max. Ambient Temp: (@ Full Load) | 40°C (derate linearly to 0A @ 85°C) | 40°C (derate linearly to 0A @ 85°C) | |
| Test Voltage: | 2700V d.c. 2 secs. Lines to Earth 1100V d.c. 2 secs. Live to Neutral | 2700V d.c. 2 secs. Lines to Earth 1100V d.c. 2 secs. Live to Neutral | |
| Approvals: | | | |
| RoHS | Compliant | Compliant | |

| Rating | Version | L1 | Cx | Cy |
|--------|---------|------------|----------|-----------|
| 1 AMP | 1 | 2 x 2.8mH | 1 x 15nF | 2 x 2.2nF |
| " | 2 | 2 x 10mH | 1 x 15nF | 2 x 2.2nF |
| " | 3 | 2 x 10mH | 1 x 47nF | 2 x 2.2nF |
| 3 AMP | 1 | 2 x 0.75mH | 1 x 15nF | 2 x 2.2nF |
| " | 2 | 2 x 1.8mH | 1 x 15nF | 2 x 2.2nF |
| " | 3 | 2 x 1.8mH | 1 x 47nF | 2 x 2.2nF |
| 6 AMP | 1 | 2 x 0.3mH | 1 x 15nF | 2 x 2.2nF |
| " | 2 | 2 x 0.7mH | 1 x 15nF | 2 x 2.2nF |
| " | 3 | 2 x 0.7mH | 1 x 47nF | 2 x 2.2nF |
| 10 AMP | 1 | 2 x 0.17mH | 1 x 15nF | 2 x 2.2nF |
| " | 2 | 2 x 0.35mH | 1 x 15nF | 2 x 2.2nF |
| " | 3 | 2 x 0.17mH | 1 x 47nF | 2 x 2.2nF |

Version 1

Version 2

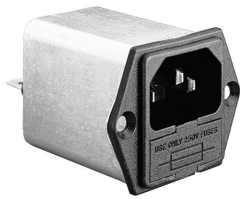
Version 3



Mains Filters
IEC Power Inlets (Single Fused)

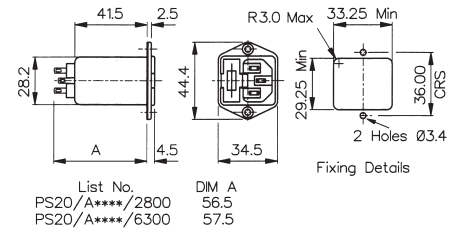


Panel Mounting

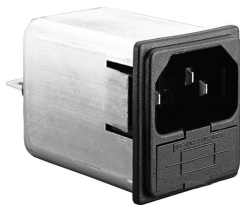


PS20/A

- 1, 3, or 6 Amp Current Rating
- Single Fused
- 2 Alternative Circuits
- 6.3mm tabs



Snap Fit



PS21/A

- 1, 3, or 6 Amp Current Rating
- Single Fused
- 2 Alternative Circuits
- 6.3mm tabs
- 1, 1.5, 2 or 3mm panels



How to order -

| | | | | | | | |
|------------------------|--------------------|--------------------|------------------------------|---|-----------------------------------|---|--|
| PS02/A or PS03/A | XX | X | 0 | / | 63 | / | XX |
| Series | Rating | L/C Circuit | Additional Components | | Tag Type and Configuration | | Panel Thickness |
| PS00/A | 01 = 1A | 2 = Version 2 | 0 = None | | 63 = 6.3mm tabs | | 00 = Flange |
| PS01/A | 03 = 3A 06 = 6A | 3 = Version 3 | | | | | 10 = 1.0mm 15 = 1.5mm 20 = 2.0mm 30 = 3.0mm |
| | | | | | | | |

| Specification | PS20/Axxx0/xx00 | PS21/Axxx0/xxxx | Part No. Example |
|----------------------------------|---|---|---|
| Max. Working Voltage: | 250V a.c. 50-400Hz | 250V a.c. 50-400Hz | PS20/A0620/63 |
| Earth Leakage Current: | <0.35mA (250V, 50Hz) | <0.35mA (250V, 50Hz) | PS20 series, flange fitting, standard filtered IEC power inlet, single fused, rated at 6 amperes. |
| Temperature Range: | -25°C to +85°C | -25°C to +85°C | L/C circuit version 2, i.e L1 = 2 x 0.7mH, Cx = 1 x 15nF, Cy = 2 x 2.2nF. 6.3mm tabs. |
| Max. Ambient Temp: (@ Full Load) | 40°C (derate linearly to 0A @ 85°C) | 40°C (derate linearly to 0A @ 85°C) | |
| Test Voltage: | 2700V d.c. 2 secs. Lines to Earth 1100V d.c. 2 secs. Live to Neutral | 2700V d.c. 2 secs. Lines to Earth 1100V d.c. 2 secs. Live to Neutral | |
| Approvals: | | | |
| RoHS | Compliant | Compliant | |

Mains Filters
PS20/Axxx0/xx00 & PS21/Axxx0/xxxx

Rating & Version Table



| Rating | Version | L1 | Cx | Cy |
|--------|---------|-----------|----------|-----------|
| 1 AMP | 1 | | | |
| " | 2 | | | |
| " | 3 | 2 x 10mH | 1 x 47nF | 2 x 2.2nF |
| 3 AMP | 1 | | | |
| " | 2 | 2 x 1.8mH | 1 x 15nF | 2 x 2.2nF |
| " | 3 | 2 x 6.5mH | 1 x 47nF | 2 x 2.2nF |
| 6 AMP | 1 | | | |
| " | 2 | 2 x 0.7mH | 1 x 15nF | 2 x 2.2nF |
| " | 3 | 2 x 2mH | 1 x 47nF | 2 x 2.2nF |

Version 2

Version 3



Base Mounting



PS25/A

- 2 or 4 Amp Current Rating
- Twin Fused
- No additional components
- 6.3mm tabs



Snap Fit



PS26/A

- 2 or 4 Amp Current Rating
- Twin Fused
- No additional components
- 6.3mm tabs
- 1, 1.5, 2 or 3mm panels



How to order -

| | | | | | | | |
|------------------------|---------------|--------------------|------------------------------|-----------------------------------|------------------------|------------------------------|-----------|
| PS25/A or PS26/A | X | 2 | 0 | / | 63 | / | XX |
| Series | Rating | L/C Circuit | Additional Components | Tag Type and Configuration | Panel Thickness | Circuit Board Diagram | |
| PS25/A | 02 = 2A | 2 = Version 2 | 0 = None | 63 = 6.3mm tabs | 00 = Flange | | |
| PS26/A | 04 = 4A | | | | 10 = 1.0mm | | |
| | | | | | 15 = 1.5mm | | |
| | | | | | 20 = 2.0mm | | |
| | | | | | 30 = 3.0mm | | |

| Specification | PS25/Axx2x/xx00 | PS26/Axx2x/xxxx | Part No. Example |
|----------------------------------|---|---|---|
| Max. Working Voltage: | 250V a.c. 50-400Hz | 250V a.c. 50-400Hz | PS20/A0620/63 |
| Earth Leakage Current: | 2.5W per fuse | 2.5W per fuse | PS20 series, flange fitting, standard filtered IEC power inlet, single fused, rated at 6 amperes. L/C circuit version 2, i.e L1 = 2 x 0.7mH, Cx = 1 x 15nF, Cy = 2 x 2.2nF. 6.3mm tabs. |
| Temperature Range: | <0.35mA (250V, 50Hz) | <0.35mA (250V, 50Hz) | |
| Max. Ambient Temp: (@ Full Load) | 40°C (derate linearly to 0A @ 85°C) | 40°C (derate linearly to 0A @ 85°C) | |
| Test Voltage: | 2700V d.c. 2 secs. Lines to Earth 1100V d.c. 2 secs. Live to Neutral | 2700V d.c. 2 secs. Lines to Earth 1100V d.c. 2 secs. Live to Neutral | |
| Approvals: | | | |
| Mating Connectors | PX0587, PX0587/SE, PX0588 | PX0587, PX0587/SE, PX0588 | |
| Accessories | P.No. 14340 (see page 151) | P.No. 14340 (see page 151) | |
| RoHS | Compliant | Compliant | |

| Rating | Version | L1 | Cx | Cy |
|--------|---------|-----------|----------|-----------|
| 1 AMP | 1 | | | |
| " | 2 | 2 x 1.8mH | 1 x 15nF | 2 x 2.2nF |
| " | 3 | | | |
| 3 AMP | 1 | | | |
| " | 2 | 2 x 0.7mH | 1 x 15nF | 2 x 2.2nF |
| " | 3 | | | |

Version 2





Компания «ЭлектроПласт» предлагает заключение долгосрочных отношений при поставках импортных электронных компонентов на взаимовыгодных условиях!

Наши преимущества:

- Оперативные поставки широкого спектра электронных компонентов отечественного и импортного производства напрямую от производителей и с крупнейших мировых складов;
- Поставка более 17-ти миллионов наименований электронных компонентов;
- Поставка сложных, дефицитных, либо снятых с производства позиций;
- Оперативные сроки поставки под заказ (от 5 рабочих дней);
- Экспресс доставка в любую точку России;
- Техническая поддержка проекта, помощь в подборе аналогов, поставка прототипов;
- Система менеджмента качества сертифицирована по Международному стандарту ISO 9001;
- Лицензия ФСБ на осуществление работ с использованием сведений, составляющих государственную тайну;
- Поставка специализированных компонентов (Xilinx, Altera, Analog Devices, Intersil, Interpoint, Microsemi, Aeroflex, Peregrine, Syfer, Eurofarad, Texas Instrument, Miteq, Cobham, E2V, MA-COM, Hittite, Mini-Circuits, General Dynamics и др.);

Помимо этого, одним из направлений компании «ЭлектроПласт» является направление «Источники питания». Мы предлагаем Вам помощь Конструкторского отдела:

- Подбор оптимального решения, техническое обоснование при выборе компонента;
- Подбор аналогов;
- Консультации по применению компонента;
- Поставка образцов и прототипов;
- Техническая поддержка проекта;
- Защита от снятия компонента с производства.



Как с нами связаться

Телефон: 8 (812) 309 58 32 (многоканальный)

Факс: 8 (812) 320-02-42

Электронная почта: org@eplast1.ru

Адрес: 198099, г. Санкт-Петербург, ул. Калинина, дом 2, корпус 4, литера А.