




## Features

- Bourns® FLAT® GDT technology
- Flexible mounting options
- Volume- and space-saving design
- Improved impulse performance
- 10 kA 8/20  $\mu$ s rated
-  UL Recognized
- RoHS compliant\*

## Applications

- Telecom CPE
- Industrial Communications
- Surge Protective Devices
- High density PCB assemblies

## 2017 Series Gas Discharge Tube Surge Arrestor with FLAT® Technology

### Description

Bourns sets a new industry standard by offering this 2-electrode Gas Discharge Tube (GDT) in an innovative flat package design. The Model 2017 Series with FLAT® Technology provides a volume and space-saving solution for high density and space-restricted PCB applications. The series is offered in a leadless version for cartridge or clamp fit applications. Surface mount versions are available in vertical and horizontal mounting configurations.

### Characteristics

Test Methods per ITU-T (CCITT) K.12 Class 3 and IEC 61643-311

| Characteristic                                 | Model No.    |              |              |               |               |               |
|--|--------------|--------------|--------------|---------------|---------------|---------------|
|  | 2017-09      | 2017-15      | 2017-23      | 2017-35       | 2017-42       | 2017-50       |
| DC Sparkover $\pm 20\%$ @ 100 V/s (1)          | 90 V         | 150 V        | 230 V        | 350 V         | 420 V         | 500 V         |
| DC Sparkover End-of-Life Values (2)            |              |              |              |               |               |               |
| Maximum (99 % of values)                       | <120 V       | <195 V       | <300 V       | <455 V        | <550 V        | <650 V        |
| Minimum (99 % of values)                       | >65 V        | >110 V       | >170 V       | >260 V        | >360 V        | >400 V        |
| Impulse Sparkover Voltage (3)                  |              |              |              |               |               |               |
| 100 V/ $\mu$ s Typical /<br>For 99 % of Values | 350 / <450 V | 400 / <550 V | 450 / <600 V | 600 / <750 V  | 700 / <850 V  | 750 / <950 V  |
| 1 kV/ $\mu$ s Typical /<br>For 99 % of Values  | 600 / <800 V | 600 / <850 V | 700 / <950 V | 800 / <1000 V | 900 / <1050 V | 950 / <1200 V |

|                                       |                                      |                  |
|---------------------------------------|--------------------------------------|------------------|
| Insulation Resistance (IR) .....      | 100 V (50 V for Model 2017-09) ..... | >1 G $\Omega$    |
| Glow Voltage .....                    | 10 mA .....                          | ~70 V            |
| Arc Voltage .....                     | >1 A .....                           | ~10 V            |
| Capacitance .....                     | 1 MHz .....                          | <2.5 pF          |
| Impulse Discharge Current .....       | 12000 A, 8/20 $\mu$ s .....          | 1 operation      |
|                                       | 10000 A, 8/20 $\mu$ s .....          | >10 operations   |
|                                       | 2500 A, 10/350 $\mu$ s .....         | 1 operation      |
|                                       | 100 A, 10/1000 $\mu$ s .....         | >300 operations  |
|                                       | 10 A, 10/1000 $\mu$ s .....          | >1500 operations |
| Alternating Discharge Current .....   | 10 Arms, 1 s .....                   | >10 operations   |
| Operating Temperature .....           |                                      | -55 to +85 °C    |
| Storage Temperature .....             |                                      | -55 to +105 °C   |
| Climatic Category (IEC 60068-1) ..... |                                      | 40/90/21         |
| Pushover Strength (4) .....           |                                      | 5 kg             |

#### Notes:

#### UL Recognized component, UL File E153537

- (1) In ionized mode. (2) IR after life >10<sup>8</sup>  $\Omega$ . (3) At delivery AQL 0.65 Level II, DIN ISO 2859. (4) Pushover Strength test performed on a board-mounted Model 2017-xx-SMC (Vertical Mount).

### How to Order

**2017 - xx - xxx - RP LF**

Series Designator \_\_\_\_\_  
 2017 = 2-electrode GDT with FLAT® Technology, 10 kA 8/20  $\mu$ s rated

Voltage (Divided by 10) \_\_\_\_\_  
 09 = 90 V    23 = 230 V    42 = 420 V  
 15 = 150 V    35 = 350 V    50 = 500 V

Configuration \_\_\_\_\_  
 A = No Leads, (Clamp-Cartridge)  
 SMH = Horizontal Mount SMD  
 SMC = Vertical Mount SMD

Packaging \_\_\_\_\_  
 RP = Reelpack (Standard)

RoHS Compliancy \_\_\_\_\_  
 LF = RoHS Compliant Product

## BOURNS®

**Asia-Pacific:** Tel: +886-2 2562-4117 • Email: asiacus@bourns.com  
**EMEA:** Tel: +36 88 520 390 • Email: eurocus@bourns.com  
**The Americas:** Tel: +1-951 781-5500 • Email: americus@bourns.com  
**www.bourns.com**

\*RoHS Directive 2002/95/EC Jan. 27, 2003 including annex and RoHS Recast 2011/65/EU June 8, 2011.

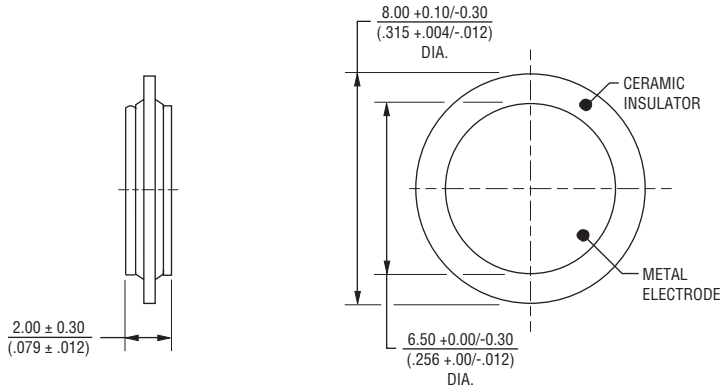
"FLAT" is a registered trademark of Bourns, Inc. in the U.S. and other countries. Specifications are subject to change without notice. The device characteristics and parameters in this data sheet can and do vary in different applications and actual device performance may vary over time. Users should verify actual device performance in their specific applications.

# 2017 Series Gas Discharge Tube Surge Arrestor with FLAT® Technology

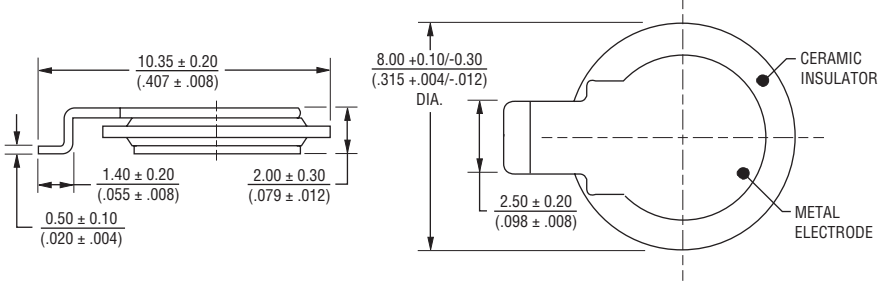
# BOURNS®

## Product Dimensions

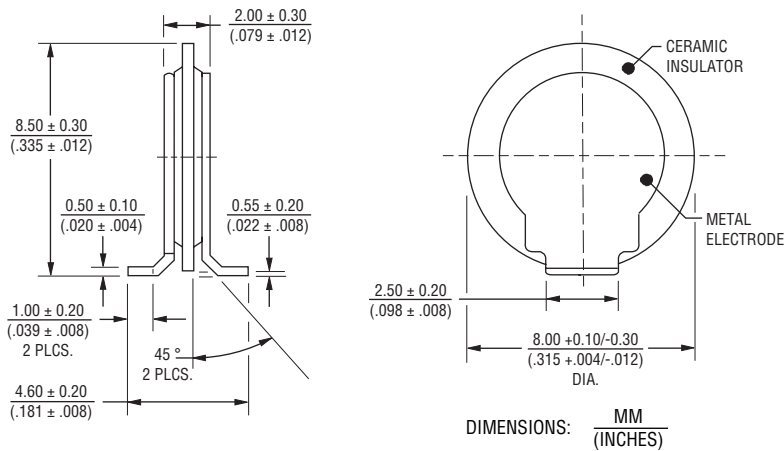
### 2017-xx-A-RPLF



### 2017-xx--SMH-RPLF

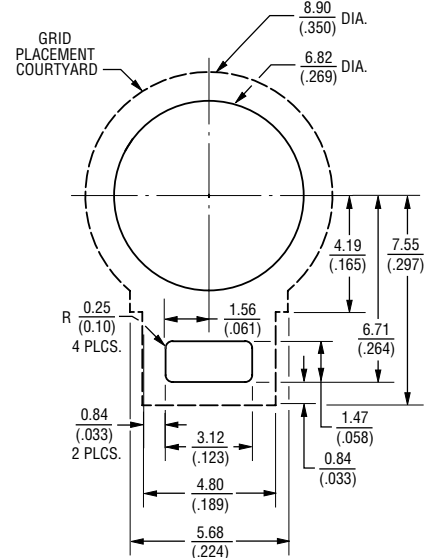


### 2017-xx-SMC-RPLF

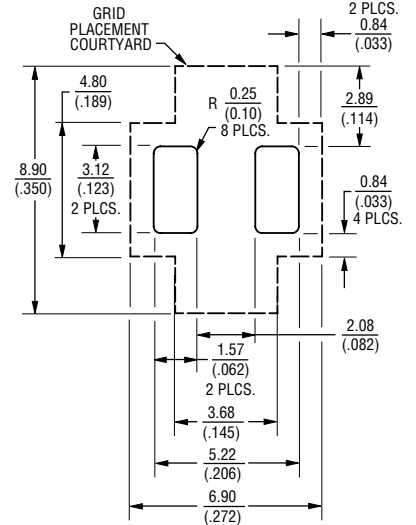


## Pad Layouts

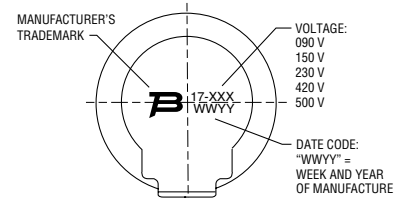
### 2017-xx--SMH-RPLF



### 2017-xx-SMC-RPLF



## Typical Part Marking



Specifications are subject to change without notice.  
 The device characteristics and parameters in this data sheet can and do vary in different applications and actual device performance may vary over time.  
 Users should verify actual device performance in their specific applications.

Information may be placed vertically or horizontally on the various models.

# 2017 Series Gas Discharge Tube Surge Arrestor with FLAT® Technology

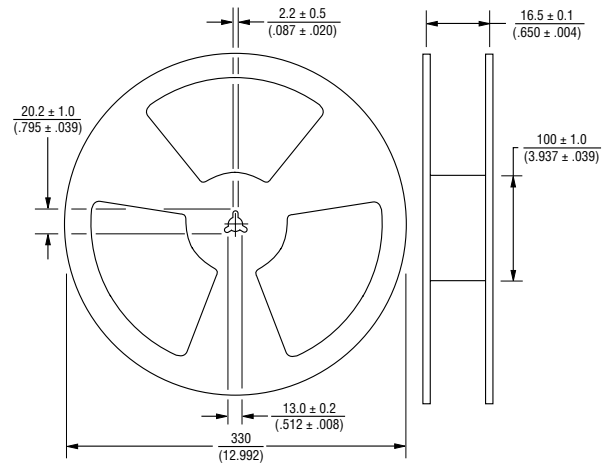
**BOURNS®**

## Packaging Specifications

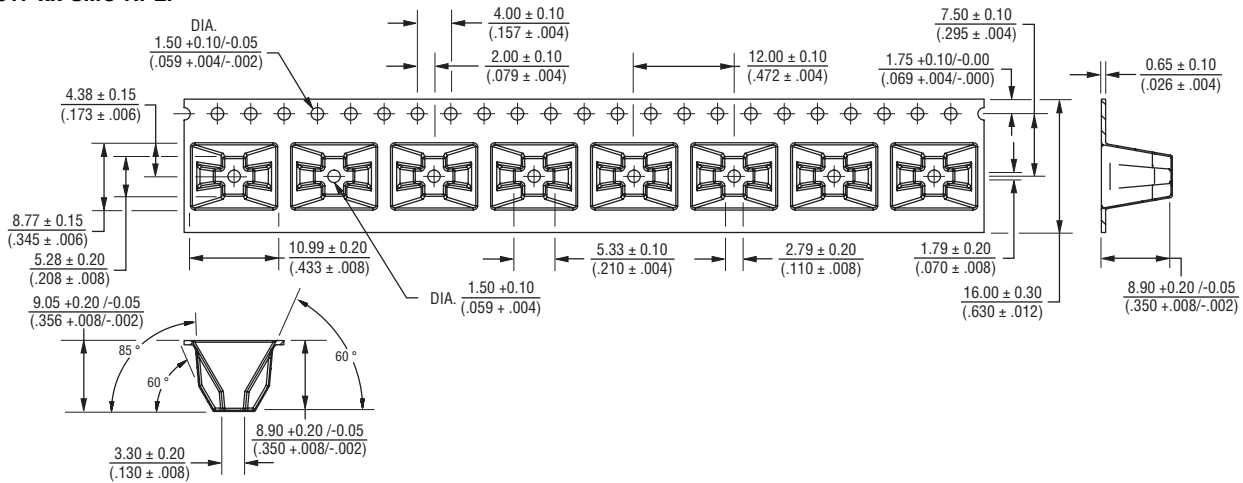
Model 2017-xx-SMC-RPLF: The standard tape and reel packaging contains 500 pieces per 13-inch reel.

Model 2017-xx-SMH-RPLF and 2017-xx-A-RPLF: The standard tape and reel packaging contains 2,000 pieces per 13-inch reel.

DIMENSIONS:  $\frac{\text{MM}}{\text{(INCHES)}}$

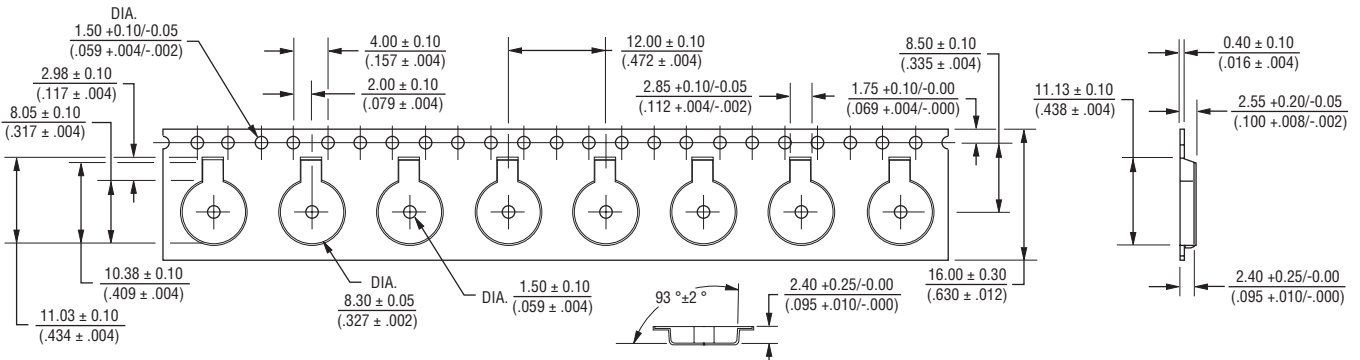


### 2017-xx-SMC-RPLF



### 2017-xx-SMH-RPLF

### 2017-xx-A-RPLF



REV. 04/16

Specifications are subject to change without notice.

The device characteristics and parameters in this data sheet can and do vary in different applications and actual device performance may vary over time. Users should verify actual device performance in their specific applications.



Компания «ЭлектроПласт» предлагает заключение долгосрочных отношений при поставках импортных электронных компонентов на взаимовыгодных условиях!

Наши преимущества:

- Оперативные поставки широкого спектра электронных компонентов отечественного и импортного производства напрямую от производителей и с крупнейших мировых складов;
- Поставка более 17-ти миллионов наименований электронных компонентов;
- Поставка сложных, дефицитных, либо снятых с производства позиций;
- Оперативные сроки поставки под заказ (от 5 рабочих дней);
- Экспресс доставка в любую точку России;
- Техническая поддержка проекта, помощь в подборе аналогов, поставка прототипов;
- Система менеджмента качества сертифицирована по Международному стандарту ISO 9001;
- Лицензия ФСБ на осуществление работ с использованием сведений, составляющих государственную тайну;
- Поставка специализированных компонентов (Xilinx, Altera, Analog Devices, Intersil, Interpoint, Microsemi, Aeroflex, Peregrine, Syfer, Eurofarad, Texas Instrument, Miteq, Cobham, E2V, MA-COM, Hittite, Mini-Circuits, General Dynamics и др.);

Помимо этого, одним из направлений компании «ЭлектроПласт» является направление «Источники питания». Мы предлагаем Вам помощь Конструкторского отдела:

- Подбор оптимального решения, техническое обоснование при выборе компонента;
- Подбор аналогов;
- Консультации по применению компонента;
- Поставка образцов и прототипов;
- Техническая поддержка проекта;
- Защита от снятия компонента с производства.



#### Как с нами связаться

**Телефон:** 8 (812) 309 58 32 (многоканальный)

**Факс:** 8 (812) 320-02-42

**Электронная почта:** [org@eplast1.ru](mailto:org@eplast1.ru)

**Адрес:** 198099, г. Санкт-Петербург, ул. Калинина, дом 2, корпус 4, литера А.