

Contents	Page
Plug sockets .....	<b>12.3</b>
Frames .....	<b>12.5</b>
Data connectors .....	<b>12.8</b>
Wires .....	<b>12.13</b>
Gender changer.....	<b>12.14</b>
Accessories .....	<b>12.15</b>

## Overview plug sockets

<b>Plug sockets</b>	<u>Germany (VDE)</u>	<u>USA / Euro</u>	<u>USA (NEMA5-15)/ Japan</u>	<u>France (UTE)</u>
Nominal voltage, max.	250 V AC	250 V AC	125 V AC	250 V AC
Nominal frequency	50 Hz AC	60 Hz AC	50 Hz AC	50 Hz AC
Nominal current, max.	10 ... 16 A	15 A	15 A	10 ... 16 A
LED display	Yellow <sup>1)</sup>	-	-	Yellow
Termination	Screw terminal	Screw terminal	Screw terminal	Screw terminal
Mounting depth assembled	approx. 62 mm	approx. 30 mm	approx. 30 mm	approx. 62 mm
<b>Plug sockets</b>	<u>Switzerland</u>	<u>Great Britain (BS)</u>	<u>Italy (CEI 23-16)</u>	<u>Australia / China</u>
Nominal voltage, max.	250 V AC	250 V AC	250 V AC	240 V AC
Nominal frequency	50 Hz AC	50/60 Hz AC	50 Hz AC	50/60 Hz AC
Nominal current, max.	10 A	13 A	10 ... 16 A	15 A
LED display	-	-	-	-
Termination	Spring clamp terminal	Screw terminal	Screw terminal	Screw terminal
Mounting depth assembled	approx. 20 mm	approx. 20 mm	approx. 20 mm	approx. 20 mm
<b>Plug sockets</b>	<u>Denmark</u>	<u>India</u>	<u>Brazil</u>	
Nominal voltage, max.	250 V AC	240 V AC	250 V AC	
Nominal frequency	50 Hz AC	50 Hz AC	60 Hz AC	
Nominal current, max.	13 A	13 A	10 A	
LED display	-	-	-	
Termination	Spring clamp terminal	Screw terminal	Screw terminal	
Mounting depth assembled	approx. 20 mm	approx. 17 mm	approx. 35 mm	

## Features

- Plug sockets for the European and international market
- Modular assembly
- Plug sockets to mount or snap into mounting plates

## Technical characteristics

Material (hoods/housings)	thermoplastic
Colour (hoods/housings)	grey, RAL 1016 (sulphur yellow)
Weight	<36 g
Nominal voltage, max.	250 V, 125 V, 240 V
Nominal frequency	50 Hz, 60 Hz
Nominal current, max.	16 A, 15 A, 13 A, 6 A
Mounting depth	62 mm, 30 mm, 20 mm

## Details

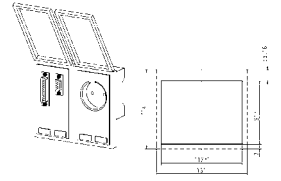
For detailed technical characteristics see previous page

Identification	Wire cross section (mm <sup>2</sup> )	Part number
Han-Port®, Plug socket, Germany (VDE), with LED display, Screw terminal connection at the rear	-6	39 50 001 0001
Han-Port®, Plug socket, USA (NEMA5-15) / Japan, Screw terminal finger safe	-6	39 50 001 0004
Han-Port®, Plug socket, France (UTE), Screw terminal connection at the rear	-6	39 50 001 0005
Han-Port®, Plug socket, Great Britain (BS), Screw terminal finger safe	-4	39 50 001 0006



Identification	Wire cross section (mm <sup>2</sup> )	Part number	
Han-Port®, Plug socket, Italy (CEI 23-16), double, Screw terminal finger safe	-2.5	39 50 001 0007	
Han-Port®, Plug socket, Australia / China, Screw terminal	-2.5	39 50 001 0009	
Han-Port®, Plug socket, USA / Euro, Screw terminal finger safe	-6	39 50 001 0010	
Han-Port®, Plug socket, India, Screw terminal	-4	39 50 001 0321	
Han-Port®, Plug socket, Brazil, Screw terminal	-2.5	39 50 001 0331	
Han-Port®, Plug socket, Switzerland, Spring clamp terminal	-1.5	39 50 001 0012	
Han-Port®, Plug socket, Denmark, Spring clamp terminal	-6	39 50 001 0017	
Han-Port®, Plug socket, Germany (VDE) for assembly in front of main switch connection at the rear	-6	39 50 001 0002	

Han-Port



## Features

- Suitable for rough industrial environments (degree of protection IP65 with closed cover)
- Modular assembly
- Various mounting plates with plug sockets and data interfaces available

## Technical characteristics

Stock temperature -25 °C ... 60 °C  
 Degree of protection acc. to IEC IP65  
 60529  
 Material (hoods/housings) thermoplastic

## Specifications and approvals



### Identification

### Part number

Han-Port®,  
 single frame,  
 plastic version, PBT black,  
 plastic cover, PC transparent

39 50 000 0300



Han-Port®,  
 single frame,  
 plastic version, PBT black,  
 plastic cover, ABS metallic silver

39 50 000 0320



Han-Port®,  
 double frame,  
 plastic version, PBT black,  
 plastic cover, PC transparent

39 50 000 0400

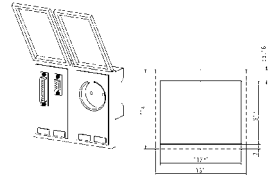


Han-Port®,  
 double frame,  
 plastic version, PBT black,  
 plastic cover, ABS metallic silver

39 50 000 0420



Han-Port



## Features

- Suitable for rough industrial environments (degree of protection IP65 with closed cover)
- Modular assembly
- Various mounting plates with plug sockets and data interfaces available

## Technical characteristics

Stock temperature -25 °C ... 60 °C  
 Degree of protection acc. to IEC 60529 IP65  
 Material (hoods/housings) zinc die cast, smoothed surface

### Identification

### Part number

Han-Port®,  
 single frame,  
 metal version, nickel plated (electrically conductive),  
 transparent plastic cover

39 50 000 0100

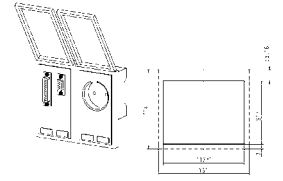


Han-Port®,  
 double frame,  
 metal version, nickel plated (electrically conductive),  
 transparent plastic cover

39 50 000 0200



Han-Port



## Features

- Suitable for rough industrial environments (degree of protection IP65 with closed cover)
- Modular assembly
- Various mounting plates with plug sockets and data interfaces available

## Technical characteristics

Stock temperature -25 °C ... 60 °C  
 Degree of protection acc. to IEC 60529 IP65  
 Material (hoods/housings) zinc die cast, smoothed surface

### Identification

### Part number

Han-Port®,  
 single frame,  
 metal version, nickel plated (electrically conductive),  
 metal cover, nickel plated

39 50 000 0110

Han-Port®,  
 single frame,  
 metal version, CPD black,  
 metal cover, CPD black

39 50 000 0120

Han-Port®,  
 double frame,  
 metal version, nickel plated (electrically conductive),  
 metal cover, nickel plated

39 50 000 0210



Han-Port



## Features

- Standard interfaces for easy connection of devices
- Modular assembly
- Assembled data connectors to snap into the frame
- Frames with or without shielding plate

## Technical characteristics

Nominal voltage, max.	125 V, 150 V, 50 V, 30 V
Nominal current, max.	3 A, 1 A
Mounting depth	32 mm, 80 mm

## Details

**D-Sub:** < 125 V AC / 150 V DC / 3 A

Mounting depth 32 mm

**RJ45:** < 50 V AC/DC / 1 A

Mounting depth 32 mm

**USB:** < 30 V AC/DC / 1 A

Mounting depth 80 mm



Identification

Part number

Han-Port®,  
Data connectors, without shielding plate,  
D-Sub 9 female/male gender changer,  
D-Sub 9 female/male gender changer,  
DIN 41652 / IEC 60807-1

39 50 003 0020



Han-Port®,  
Data connectors, without shielding plate,  
D-Sub 9 female/female gender changer,  
DIN 41652 / IEC 60807-1

39 50 003 0024



Han-Port®,  
Data connectors, without shielding plate,  
D-Sub 9 female/male gender changer,  
D-Sub 25 female/male gender changer,  
DIN 41652 / IEC 60807-1

39 50 003 0040



Han-Port®,  
Data connectors, without shielding plate,  
D-Sub 25 female/male gender changer,  
DIN 41652 / IEC 60807-1

39 50 003 0074



Han-Port®,  
Data connectors, without shielding plate,  
RJ45 female/female gender changer, 8-pins, metal, Cat. 5e,  
D-Sub 9 female/female gender changer,  
D-Sub 9 male/male gender changer,  
DIN 41652 / IEC 60807-1

39 50 003 0111



Han-Port®,  
Data connectors, without shielding plate,  
RJ45 female/female gender changer, 8-pins, metal, Cat. 5e,  
D-Sub 9 male/male gender changer,  
D-Sub 9 male/male gender changer,  
D-Sub 9 male/male gender changer,  
DIN 41652 / IEC 60807-1

39 50 003 0129



Han-Port

## Identification

## Part number

Han-Port®,  
Data connectors, without shielding plate,  
RJ45 female/female gender changer, 8-pins, metal, Cat. 5e,  
D-Sub 9 female/male gender changer,  
D-Sub 25 female/male gender changer,  
DIN 41652 / IEC 60807-1

39 50 003 0170



Han-  
Port

Identification

Part number

Han-Port®,  
Data connectors, with shielding plate,  
RJ45 female/female gender changer, 8-pins, metal, Cat. 5e,  
RJ45 female/female gender changer, 8-pins, metal, Cat. 5e

39 50 002 0120



Han-Port®,  
Data connectors, with shielding plate,  
RJ45 female/female gender changer, 8-pins, metal, Cat. 5e,  
RJ45 female/female gender changer, 8-pins, metal, Cat. 5e,  
RJ45 female/female gender changer, 8-pins, metal, Cat. 5e,  
RJ45 female/female gender changer, 8-pins, metal, Cat. 5e

39 50 002 0122



Han-Port®,  
Data connectors, with shielding plate,  
USB female/female gender changer, size A according to specification 3.0,  
USB female/female gender changer, size A according to specification 3.0

39 50 002 0093



Han-Port®,  
Data connectors, with shielding plate,  
USB female/female gender changer, size A according to specification 3.0,  
RJ45 female/female gender changer, 8-pins, metal, Cat. 5e,  
D-Sub 9 male/male gender changer,  
D-Sub 9 male/male gender changer

39 50 002 0117



Han-Port®,  
Data connectors, with shielding plate,  
USB female/female gender changer, size A according to specification 3.0,  
RJ45 female/female gender changer, 8-pins, metal, Cat. 5e,  
RJ45 female/female gender changer, 8-pins, metal, Cat. 5e

39 50 002 0133



Han-Port®,  
Data connectors, with shielding plate,  
USB female/female gender changer, size A according to specification 3.0,  
RJ45 female/female gender changer, 8-pins, metal, Cat. 5e,  
D-Sub 9 female/male gender changer






39 50 002 0143



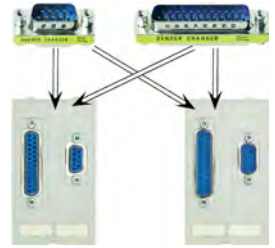
Han-Port

Identification	Part number	
<p>Han-Port®, Data connectors, with shielding plate, USB female/female gender changer, size A according to specification 3.0, RJ45 female/female gender changer, 8-pins, metal, Cat. 5e, D-Sub 25 female/male gender changer</p>	<p>39 50 002 0145</p>	
<p>Han-Port®, Data connectors, with shielding plate, RJ45 female/female gender changer, 8-pins, metal, Cat. 5e, RJ45 female/female gender changer, 8-pins, metal, Cat. 5e, D-Sub 9 female/female gender changer</p>	<p>39 50 002 0163</p>	

Han-Port

Identification	Cable length	Part number	
USB, male/male, Patch cable, type A	2 m 5 m	39 50 903 0050 39 50 903 0051	
RJ45, 8-pins, metal, Patch cable, Cat. 5e	2 m 5 m	39 50 903 0060 39 50 903 0061	
D-Sub 9, male/male, Patch cable	2 m 5 m	39 50 903 0010 39 50 903 0011	
D-Sub 9, female/male, Patch cable	2 m 5 m	39 50 903 0020 39 50 903 0021	
D-Sub 25, female/male, Patch cable	1.8 m 5 m	39 50 903 0040 39 50 903 0041	

Hand-  
Port



Identification

Part number

Han-Port®,  
Gender changer,  
D-Sub 9,  
female/female

39 50 904 0030



Han-Port®,  
Gender changer,  
D-Sub 9,  
female/male

39 50 904 0031



Han-Port®,  
Gender changer,  
D-Sub 9,  
male/male

39 50 904 0032



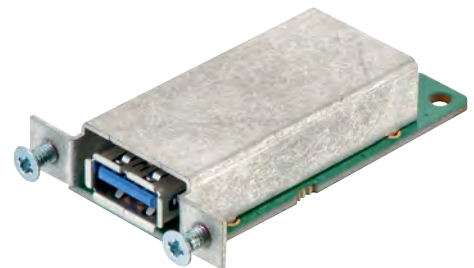
Han-Port®,  
Gender changer,  
D-Sub 25,  
female/female

39 50 904 0050



Han-Port®,  
Gender changer,  
USB female/female gender changer, size A according to specification 3.0

39 50 904 0020



Han-Port®,  
Gender changer,  
RJ45 female/female gender changer, 8-pins, metal, Cat. 5e

39 50 904 0010



Han-Port

Identification	Part number
----------------	-------------

Han-Port®,  
Blind plate,  
with perforated cut-outs for gender changer RJ45, USB and  
D-Sub 25

39 50 000 0851



Han-Port®,  
Blind plate,  
free space for self assembly of connectors or switches: 45 x 75  
mm

39 50 000 0890



Han-Port®,  
Identification strip  
Range of delivery:  
20 pieces per frame

39 50 000 0900



Han-Port



Компания «ЭлектроПласт» предлагает заключение долгосрочных отношений при поставках импортных электронных компонентов на взаимовыгодных условиях!

Наши преимущества:

- Оперативные поставки широкого спектра электронных компонентов отечественного и импортного производства напрямую от производителей и с крупнейших мировых складов;
- Поставка более 17-ти миллионов наименований электронных компонентов;
- Поставка сложных, дефицитных, либо снятых с производства позиций;
- Оперативные сроки поставки под заказ (от 5 рабочих дней);
- Экспресс доставка в любую точку России;
- Техническая поддержка проекта, помощь в подборе аналогов, поставка прототипов;
- Система менеджмента качества сертифицирована по Международному стандарту ISO 9001;
- Лицензия ФСБ на осуществление работ с использованием сведений, составляющих государственную тайну;
- Поставка специализированных компонентов (Xilinx, Altera, Analog Devices, Intersil, Interpoint, Microsemi, Aeroflex, Peregrine, Syfer, Eurofarad, Texas Instrument, Miteq, Cobham, E2V, MA-COM, Hittite, Mini-Circuits, General Dynamics и др.);

Помимо этого, одним из направлений компании «ЭлектроПласт» является направление «Источники питания». Мы предлагаем Вам помощь Конструкторского отдела:

- Подбор оптимального решения, техническое обоснование при выборе компонента;
- Подбор аналогов;
- Консультации по применению компонента;
- Поставка образцов и прототипов;
- Техническая поддержка проекта;
- Защита от снятия компонента с производства.



#### Как с нами связаться

**Телефон:** 8 (812) 309 58 32 (многоканальный)

**Факс:** 8 (812) 320-02-42

**Электронная почта:** [org@eplast1.ru](mailto:org@eplast1.ru)

**Адрес:** 198099, г. Санкт-Петербург, ул. Калинина, дом 2, корпус 4, литера А.