



**MICROCHIP**

---

**MCP23X17**  
**Evaluation Board**  
**User's Guide**

---

**Note the following details of the code protection feature on Microchip devices:**

- Microchip products meet the specification contained in their particular Microchip Data Sheet.
- Microchip believes that its family of products is one of the most secure families of its kind on the market today, when used in the intended manner and under normal conditions.
- There are dishonest and possibly illegal methods used to breach the code protection feature. All of these methods, to our knowledge, require using the Microchip products in a manner outside the operating specifications contained in Microchip's Data Sheets. Most likely, the person doing so is engaged in theft of intellectual property.
- Microchip is willing to work with the customer who is concerned about the integrity of their code.
- Neither Microchip nor any other semiconductor manufacturer can guarantee the security of their code. Code protection does not mean that we are guaranteeing the product as "unbreakable."

Code protection is constantly evolving. We at Microchip are committed to continuously improving the code protection features of our products. Attempts to break Microchip's code protection feature may be a violation of the Digital Millennium Copyright Act. If such acts allow unauthorized access to your software or other copyrighted work, you may have a right to sue for relief under that Act.

---

Information contained in this publication regarding device applications and the like is provided only for your convenience and may be superseded by updates. It is your responsibility to ensure that your application meets with your specifications. MICROCHIP MAKES NO REPRESENTATIONS OR WARRANTIES OF ANY KIND WHETHER EXPRESS OR IMPLIED, WRITTEN OR ORAL, STATUTORY OR OTHERWISE, RELATED TO THE INFORMATION, INCLUDING BUT NOT LIMITED TO ITS CONDITION, QUALITY, PERFORMANCE, MERCHANTABILITY OR FITNESS FOR PURPOSE. Microchip disclaims all liability arising from this information and its use. Use of Microchip devices in life support and/or safety applications is entirely at the buyer's risk, and the buyer agrees to defend, indemnify and hold harmless Microchip from any and all damages, claims, suits, or expenses resulting from such use. No licenses are conveyed, implicitly or otherwise, under any Microchip intellectual property rights.

**Trademarks**

The Microchip name and logo, the Microchip logo, Accuron, dsPIC, KEELOQ, microID, MPLAB, PIC, PICmicro, PICSTART, PRO MATE, PowerSmart, rfPIC and SmartShunt are registered trademarks of Microchip Technology Incorporated in the U.S.A. and other countries.

AmpLab, FilterLab, Migratable Memory, MXDEV, MXLAB, SEEVAL, SmartSensor and The Embedded Control Solutions Company are registered trademarks of Microchip Technology Incorporated in the U.S.A.

Analog-for-the-Digital Age, Application Maestro, CodeGuard, dsPICDEM, dsPICDEM.net, dsPICworks, ECAN, ECONOMONITOR, FanSense, FlexROM, fuzzyLAB, In-Circuit Serial Programming, ICSP, ICEPIC, Linear Active Thermistor, Mindi, MiWi, MPASM, MPLIB, MPLINK, Pickit, PICDEM, PICDEM.net, PICLAB, PICTail, PowerCal, PowerInfo, PowerMate, PowerTool, REAL ICE, rFLAB, rfPICDEM, Select Mode, Smart Serial, SmartTel, Total Endurance, UNI/O, WiperLock and ZENA are trademarks of Microchip Technology Incorporated in the U.S.A. and other countries.

SQTP is a service mark of Microchip Technology Incorporated in the U.S.A.

All other trademarks mentioned herein are property of their respective companies.

© 2006, Microchip Technology Incorporated, Printed in the U.S.A., All Rights Reserved.

 Printed on recycled paper.

**QUALITY MANAGEMENT SYSTEM  
CERTIFIED BY DNV  
== ISO/TS 16949:2002 ==**

*Microchip received ISO/TS-16949:2002 certification for its worldwide headquarters, design and wafer fabrication facilities in Chandler and Tempe, Arizona, Gresham, Oregon and Mountain View, California. The Company's quality system processes and procedures are for its PICmicro® 8-bit MCUs, KEELOQ® code hopping devices, Serial EEPROMs, microperipherals, nonvolatile memory and analog products. In addition, Microchip's quality system for the design and manufacture of development systems is ISO 9001:2000 certified.*

---



---

**Table of Contents**

---



---

<b>Preface</b> .....	<b>1</b>
Introduction.....	1
Document Layout .....	1
Conventions Used in this Guide .....	2
Recommended Reading.....	2
The Microchip Web Site .....	3
Customer Support .....	3
Document Revision History .....	3
<b>Chapter 1. Product Overview</b>	
1.1 Introduction .....	5
1.2 What is the MCP23X17 Evaluation Board? .....	5
1.3 What the MCP23X17 Evaluation Board Kit Includes .....	5
<b>Chapter 2. Installation and Operation</b>	
2.1 Introduction .....	7
2.2 Features .....	7
2.3 Getting Started .....	8
2.4 MCP23X17 Evaluation Board Description .....	9
2.5 Firmware Description .....	9
<b>Appendix A. Schematic and Layouts</b>	
A.1 Introduction .....	11
A.2 Board Schematic (Page 1) .....	12
A.3 Board Schematic (Page 2) .....	13
A.4 Board Schematic (Page 3) .....	14
A.5 Board - Top Layer (with silk screen) .....	15
A.6 Board - Bottom Layer .....	16
<b>Appendix B. Bill Of Materials (BOM)</b>	
<b>Worldwide Sales and Service</b> .....	<b>18</b>

# MCP23X17 Evaluation Board User's Guide

---

NOTES:



# MCP23X17 EVALUATION BOARD USER'S GUIDE

---

---

## Preface

---

---

### NOTICE TO CUSTOMERS

All documentation becomes dated, and this manual is no exception. Microchip tools and documentation are constantly evolving to meet customer needs, so some actual dialogs and/or tool descriptions may differ from those in this document. Please refer to our web site ([www.microchip.com](http://www.microchip.com)) to obtain the latest documentation available.

Documents are identified with a “DS” number. This number is located on the bottom of each page, in front of the page number. The numbering convention for the DS number is “DSXXXXA”, where “XXXX” is the document number and “A” is the revision level of the document.

## INTRODUCTION

This chapter contains general information that will be useful to know before using the MCP23X17 Evaluation Board. Items discussed in this chapter include:

- Document Layout
- Conventions Used in this Guide
- Recommended Reading
- The Microchip Web Site
- Customer Support
- Document Revision History

## DOCUMENT LAYOUT

This document describes how to use the MCP23X17 Evaluation Board as a development tool to emulate and debug firmware on a target board. The manual layout is as follows:

- **Chapter 1. “Product Overview”** – Important information about the MCP23X17 Evaluation Board.
- **Chapter 2. “Installation and Operation”** – Includes instructions on how to get started with the MCP23X17 Evaluation Board.
- **Appendix A. “Schematic and Layouts”** – Shows the schematic and layout diagrams for the MCP23X17 Evaluation Board.
- **Appendix B. “Bill Of Materials (BOM)”** – Lists the parts used to build the MCP23X17 Evaluation Board.

# MCP23X17 Evaluation Board User's Guide

## CONVENTIONS USED IN THIS GUIDE

This manual uses the following documentation conventions:

### DOCUMENTATION CONVENTIONS

Description	Represents	Examples
<b>Arial font:</b>		
Italic characters	Referenced books	<i>MPLAB<sup>®</sup> IDE User's Guide</i>
	Emphasized text	...is the <i>only</i> compiler...
Initial caps	A window	the Output window
	A dialog	the Settings dialog
	A menu selection	select Enable Programmer
Quotes	A field name in a window or dialog	"Save project before build"
Underlined, italic text with right angle bracket	A menu path	<u><i>File&gt;Save</i></u>
Bold characters	A dialog button	Click <b>OK</b>
	A tab	Click the <b>Power</b> tab
N'Rnnnn	A number in Verilog <sup>®</sup> format, where N is the total number of digits, R is the radix and n is a digit.	4'b0010, 2'hF1
Text in angle brackets < >	A key on the keyboard	Press <Enter>, <F1>
<b>Courier New font:</b>		
Plain Courier New	Sample source code	#define START
	Filenames	autoexec.bat
	File paths	c:\mcc18\h
	Keywords	_asm, _endasm, static
	Command-line options	-Opa+, -Opa-
	Bit values	0, 1
	Constants	0xFF, 'A'
Italic Courier New	A variable argument	<i>file.o</i> , where <i>file</i> can be any valid filename
Square brackets [ ]	Optional arguments	mcc18 [options] <i>file</i> [options]
Curly brackets and pipe character: {   }	Choice of mutually exclusive arguments; an OR selection	errorlevel {0 1}
Ellipses...	Replaces repeated text	var_name [, var_name...]
	Represents code supplied by user	void main (void) { ... }

## RECOMMENDED READING

For more information regarding the Stand-Alone CAN controller, CAN I/O expander, and CAN transceiver devices, refer to the appropriate data sheet. Table 1-1 shows the device and associated data sheet literature number. These documents can be downloaded from the Microchip web site at: [www.microchip.com](http://www.microchip.com).

**TABLE 1-1: DEVICES AND DATA SHEET LITERATURE NUMBERS**

Device	Literature #	Device	Literature #
<b>MCP23X17</b>	DS21952	<b>PIC16F818</b>	DS39598

## THE MICROCHIP WEB SITE

Microchip provides online support via our web site at [www.microchip.com](http://www.microchip.com). This web site is used as a means to make files and information easily available to customers. Accessible by using your favorite Internet browser, the web site contains the following information:

- **Product Support** – Data sheets and errata, application notes and sample programs, design resources, user's guides and hardware support documents, latest software releases and archived software
- **General Technical Support** – Frequently Asked Questions (FAQs), technical support requests, online discussion groups, Microchip consultant program member listing
- **Business of Microchip** – Product selector and ordering guides, latest Microchip press releases, listing of seminars and events, listings of Microchip sales offices, distributors and factory representatives

## CUSTOMER SUPPORT

Users of Microchip products can receive assistance through several channels:

- Distributor or Representative
- Local Sales Office
- Field Application Engineer (FAE)
- Technical Support
- Development Systems Information Line

Customers should contact their distributor, representative or field application engineer for support. Local sales offices are also available to help customers. A listing of sales offices and locations is included in the back of this document.

Technical support is available through the web site at: <http://support.microchip.com>

## DOCUMENT REVISION HISTORY

### Revision B (August 2006)

- Add disclaimer to Bill of Materials regarding RoHS-Compliant part numbers.

### Revision A (January 2006)

- Initial Release of this Document.

# MCP23X17 Evaluation Board User's Guide

---

NOTES:



---

## Chapter 1. Product Overview

---

### 1.1 INTRODUCTION

This chapter provides an overview of the MCP23X17 Evaluation Board and covers the following topics:

- What is the MCP23X17 Evaluation Board?
- What the MCP23X17 Evaluation Board kit includes

### 1.2 WHAT IS THE MCP23X17 EVALUATION BOARD?

The MCP23X17 Evaluation Board allows the system designer to evaluate the operation of the MCP23X17 General Purpose I/O (GPIO) expander. The board demonstrates the MCP23X17 performance in a simple circuit (4 inputs and 12 outputs).

### 1.3 WHAT THE MCP23X17 EVALUATION BOARD KIT INCLUDES

This MCP23X17 Evaluation Board Kit includes:

- One MCP23X17 Evaluation Board
  - MCP23017 GPIO Expander with I<sup>2</sup>C™ interface (installed)
  - MCP23S17 GPIO Expander with SPI interface (installed)
- One AIPD Evaluation Board
- Analog and Interface Products Demonstration Boards CD-ROM (DS21912)
  - MCP23X17 Evaluation Board User's Guide (DS51592)

# MCP23X17 Evaluation Board User's Guide

---

NOTES:

---

---

## Chapter 2. Installation and Operation

---

---

### 2.1 INTRODUCTION

This chapter discusses the setup and operation of the MCP23X17 Evaluation Board.

The MCP23X17 Evaluation Board is designed to demonstrate simple, low-cost input/output expansion using the MCP23X17 devices and a low-cost PICmicro<sup>®</sup> microcontroller.

Four MCP23X17 pins are configured as inputs and connected to four momentary push buttons. The remaining twelve GPIO pins are configured as outputs and connected to LEDs. Each button causes the LEDs to sequence in a predetermined pattern.

The MCP23X17 is provided in small, space-saving 18-lead SSOP packages.

### 2.2 FEATURES

The MCP23X17 Evaluation Board has the following features:

- Two 16-bit GPIO Expanders
  - MCP23017 with I<sup>2</sup>C interface
  - MCP23S17 with SPI interface
- Slide switch for selecting between the two GPIO expanders.
- Four momentary buttons and twelve LEDs, each connected to an individual GPIO pin to demonstrate the input/output functionality of the MCP23X17.
- Headers for the MCP23X17 pins to allow evaluation in a user defined application.
- Jumpers (not populated, but shorted by a trace on the bottom of the PCB) to isolate the MCP23X17 from the LEDs and buttons, so they can be evaluated in a custom circuit.
- Header for programming the PIC16F818.

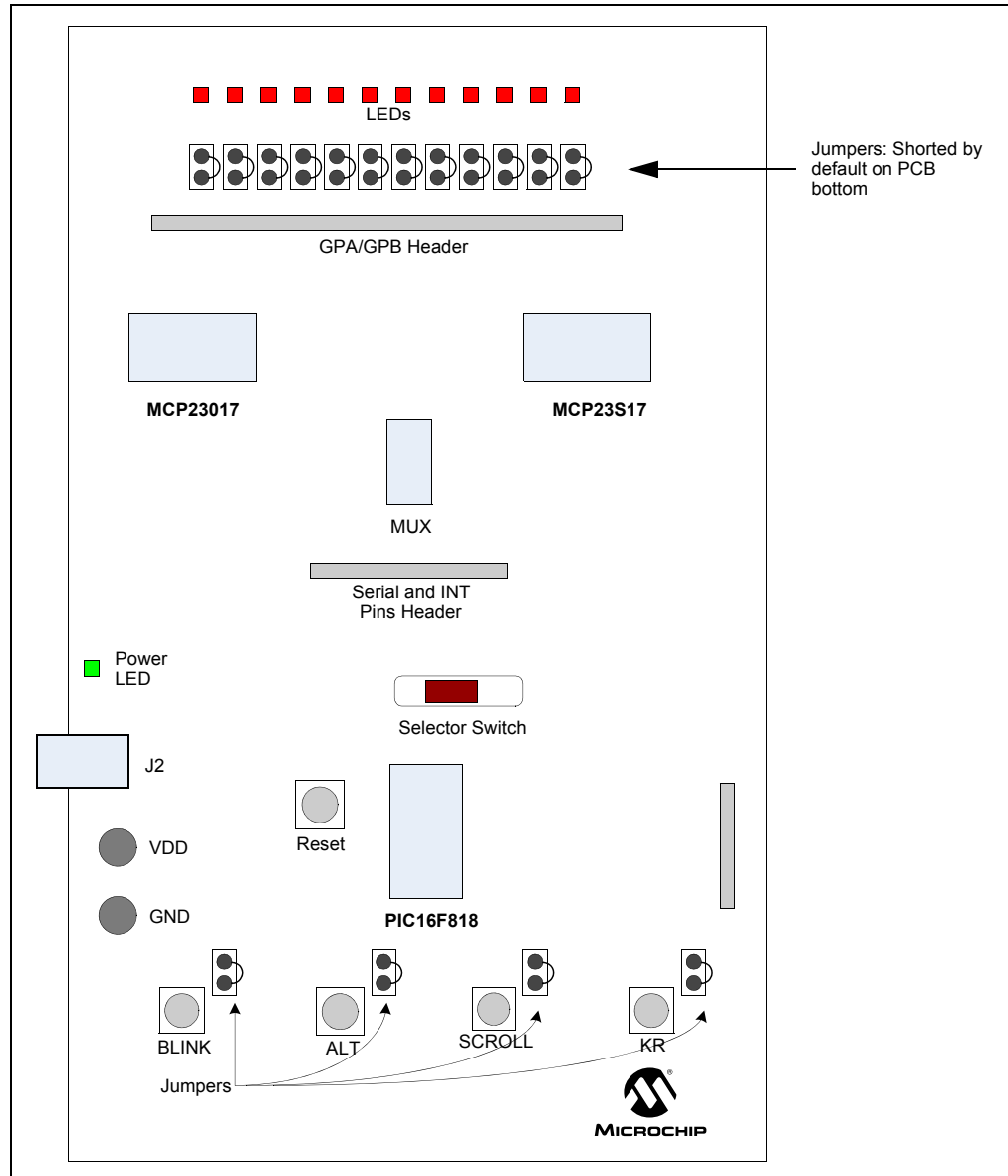
# MCP23X17 Evaluation Board User's Guide

## 2.3 GETTING STARTED

The MCP23X17 Evaluation Board is a fully functional, assembled and tested board for evaluation of the MCP23017 (I<sup>2</sup>C interface) and MCP23S17 (SPI interface) general purpose I/O expanders. The following describes the basic setup and operation (see Figure 2-1):

1. Either connect a 9V power supply into the power jack (J2) or connect a 5V power supply to the V<sub>DD</sub> and GND test points.
2. The green power LED will illuminate.
3. The device selector slide switch selects between the two devices. Slide the switch towards the device of choice.
4. On power-up, the LEDs will sequence in a slow scroll pattern.
5. Press a button and the LED sequencing will match the function defined by the button. For example, pressing the "Blink" button will cause the LEDs to continuously blink.

**FIGURE 2-1: BOARD LAYOUT**



## 2.4 MCP23X17 EVALUATION BOARD DESCRIPTION

### 2.4.1 Major Board Components

1. MCP23017 and MCP23S17 - The two devices under evaluation/demonstration. Both devices are connected to the same inputs and outputs and selector switch is used to select which device the PICmicro controls. A mux is used to route the serial (I<sup>2</sup>C or SPI) from the PICmicro to the MCP23X17.
2. LEDs - These are connected to the MCP23X17 GPIO configured as outputs.
3. Momentary Buttons - These are connected to the MCP23X17 configured as inputs.
4. PIC16F818 - Reads the selector switch and controls the MCP23X17 devices.
5. Headers - There are two headers which are connected to the MCP23X17 pins to allow off-board connections.
6. Jumpers - The jumpers are used to isolate the MCP23X17 pins so they can be connected to an off-board circuit. The jumpers are not populated, however, they are shorted by a trace on the bottom of the PCB.
7. Power - The boards can be powered by 9V via the power jack (J2) or by applying 5V directly to the power points (TP1 and TP2).

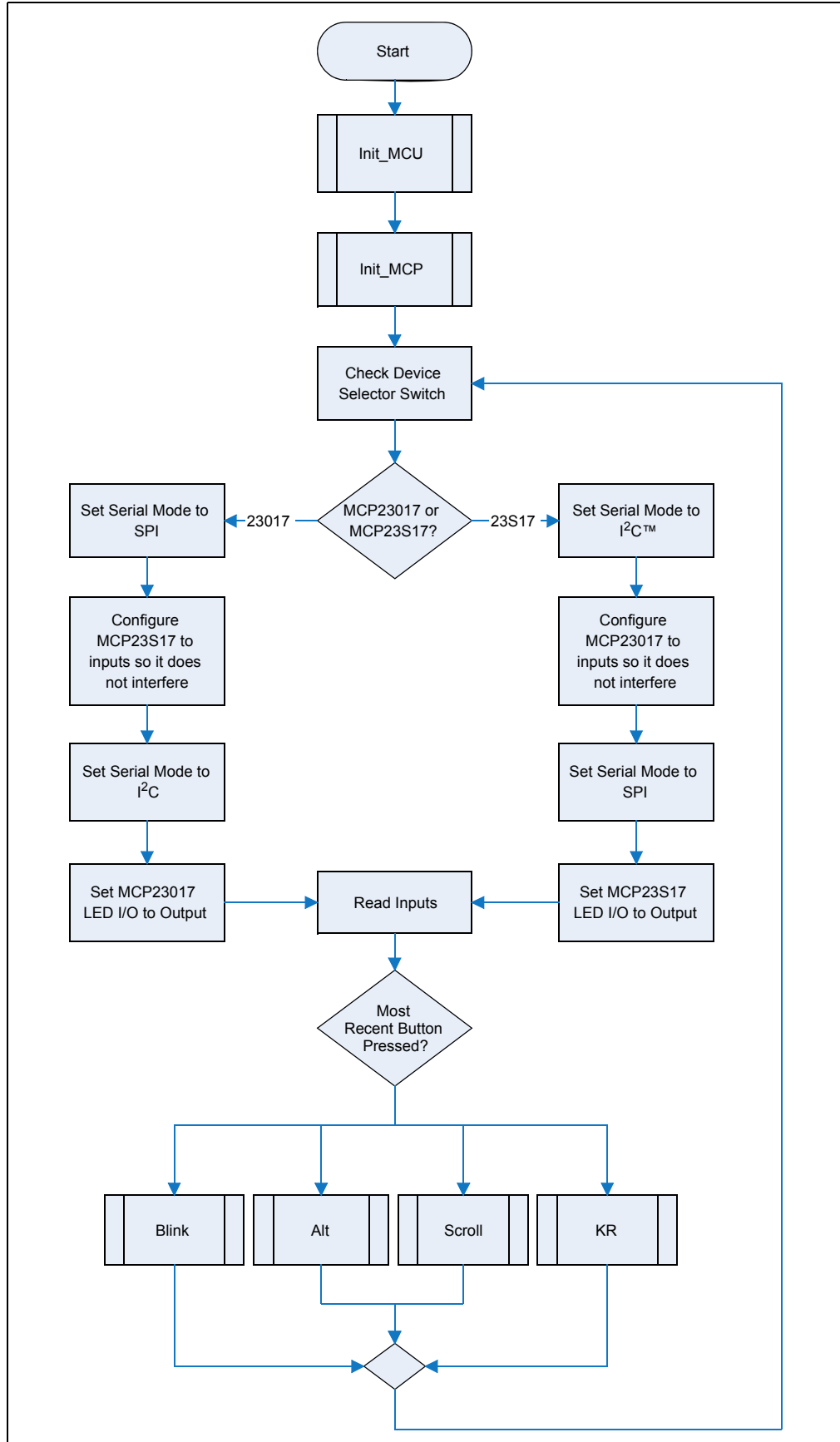
## 2.5 FIRMWARE DESCRIPTION

See Figure 2-2 for the main firmware flow diagram

1. The firmware first configures the PIC16F818 microcontroller.
2. The firmware configures the MCP23X17 devices (4-inputs, 12-outputs, enable interrupts, etc.).
3. The firmware checks the selector switch to determine which MCP23X17 to communicate with during the main loop.
4. The "other" MCP23X17 is configured to all inputs so that it does not cause contention on LED connections.
5. The MCP23X17 inputs are sampled.
6. The LEDs light up in a pattern as defined by the button which was pressed. If no button is pressed, the LEDs maintain the current sequence.

# MCP23X17 Evaluation Board User's Guide

FIGURE 2-2: MAIN FIRMWARE FLOW





# MCP23X17 EVALUATION BOARD USER'S GUIDE

---

---

## Appendix A. Schematic and Layouts

---

---

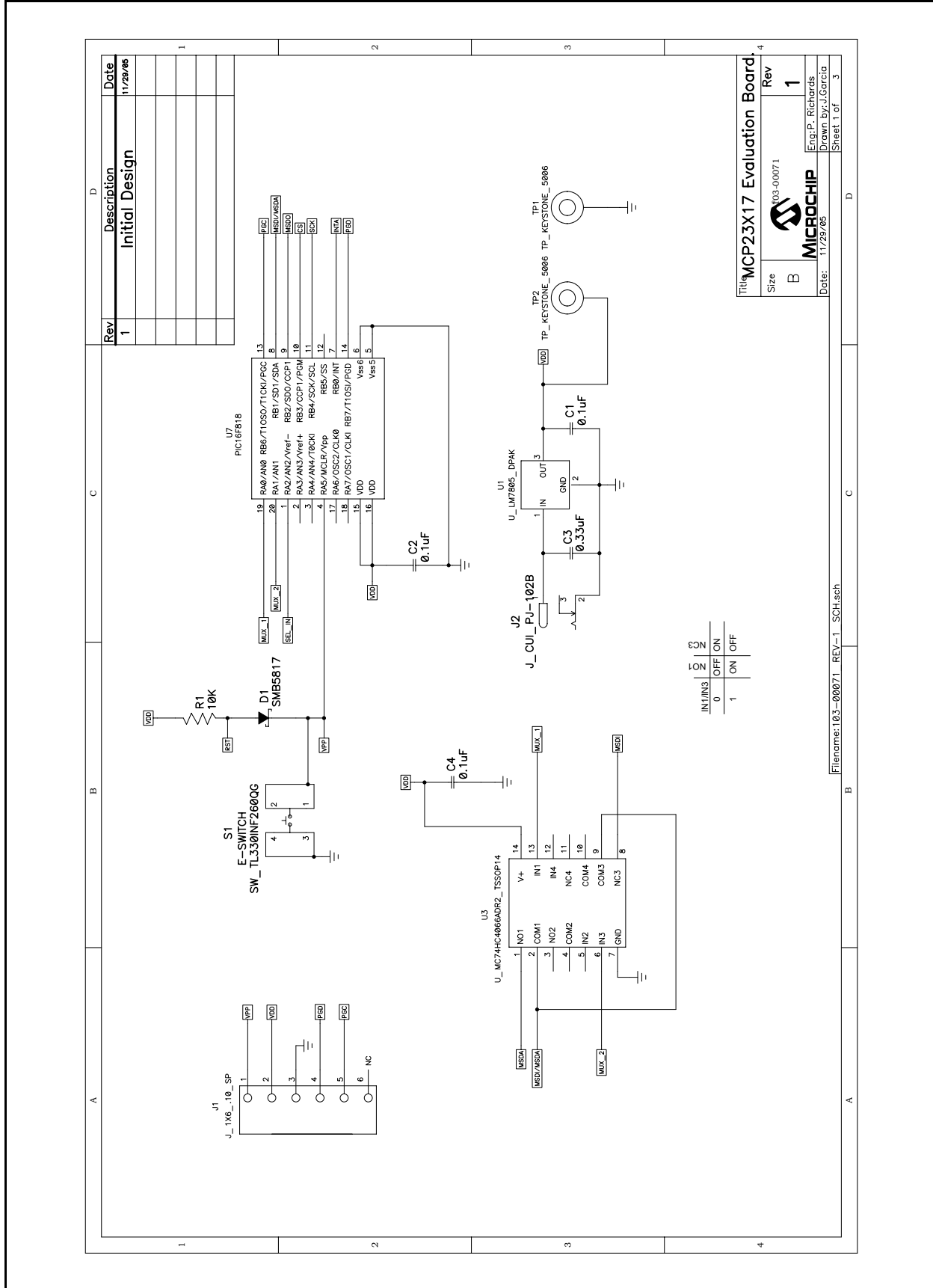
### A.1 INTRODUCTION

This appendix contains the schematic and PCB layout for the MCP23X17 Evaluation Board. Diagrams included:

- Board Schematics (pages 1 thru 3)
- Board - Top Layer (with silk screen)
- Board - Bottom Layer

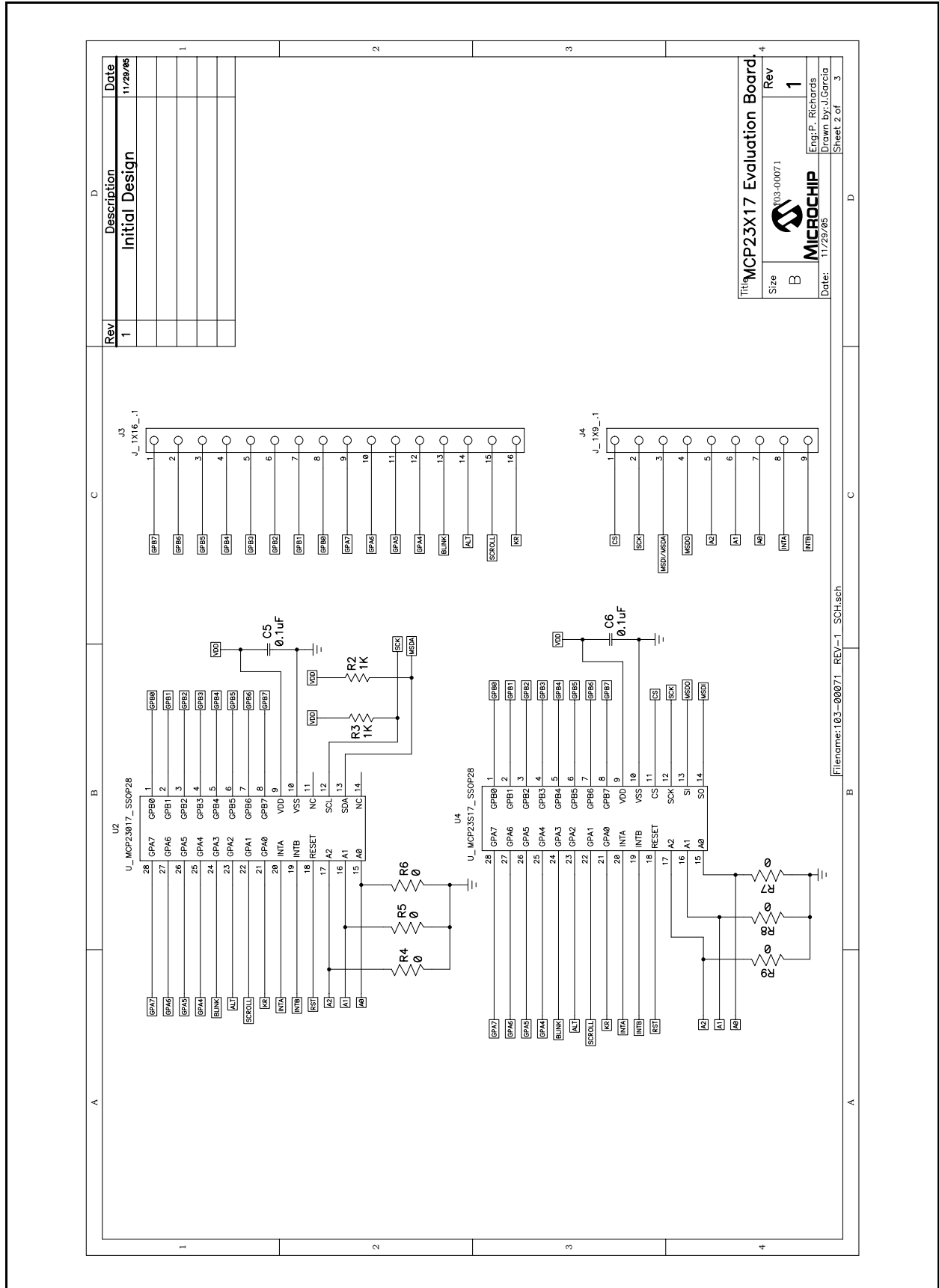
# MCP23X17 Evaluation Board User's Guide

## A.2 BOARD SCHEMATIC (PAGE 1)



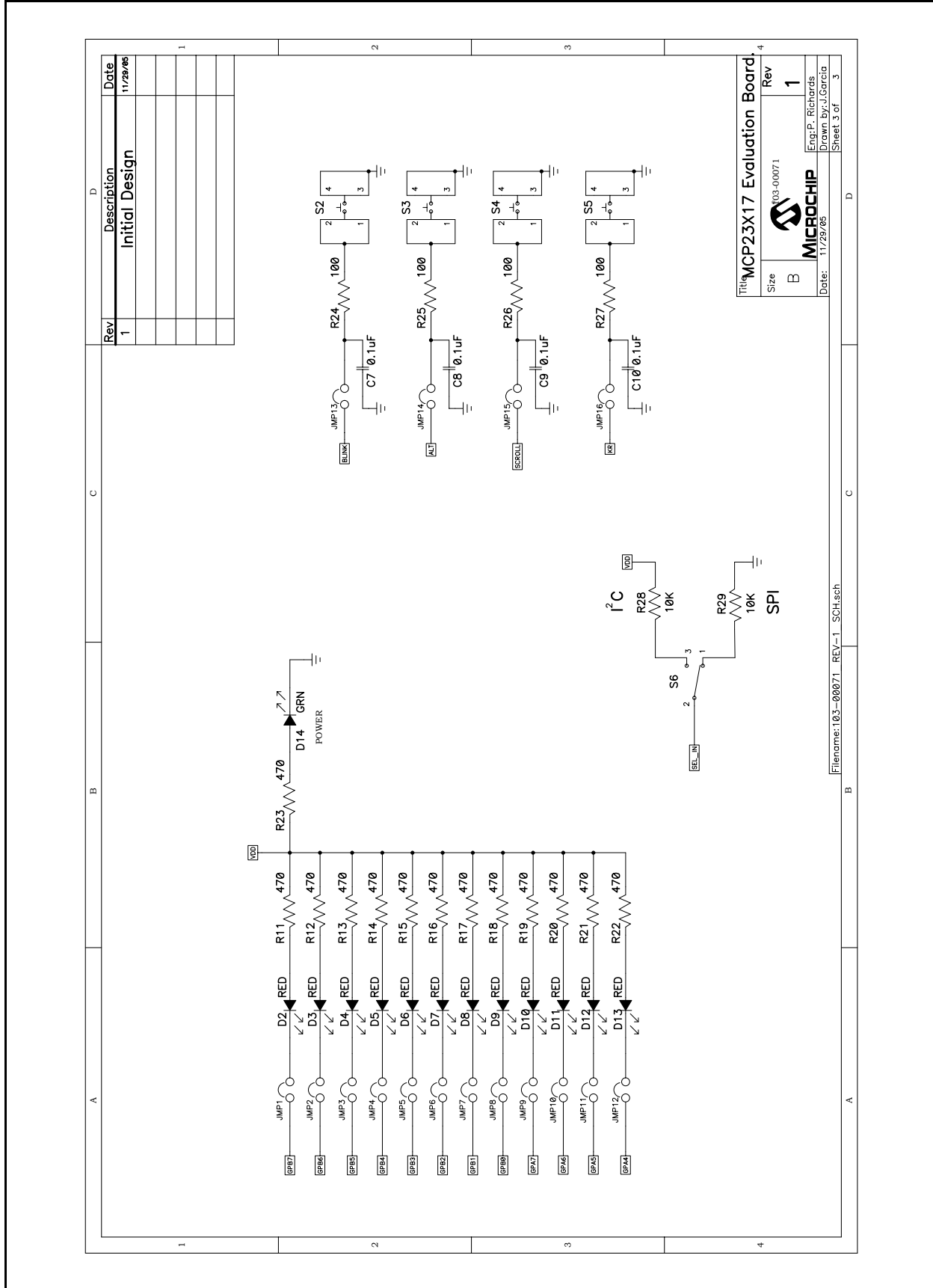


## A.3 BOARD SCHEMATIC (PAGE 2)



# MCP23X17 Evaluation Board User's Guide

## A.4 BOARD SCHEMATIC (PAGE 3)

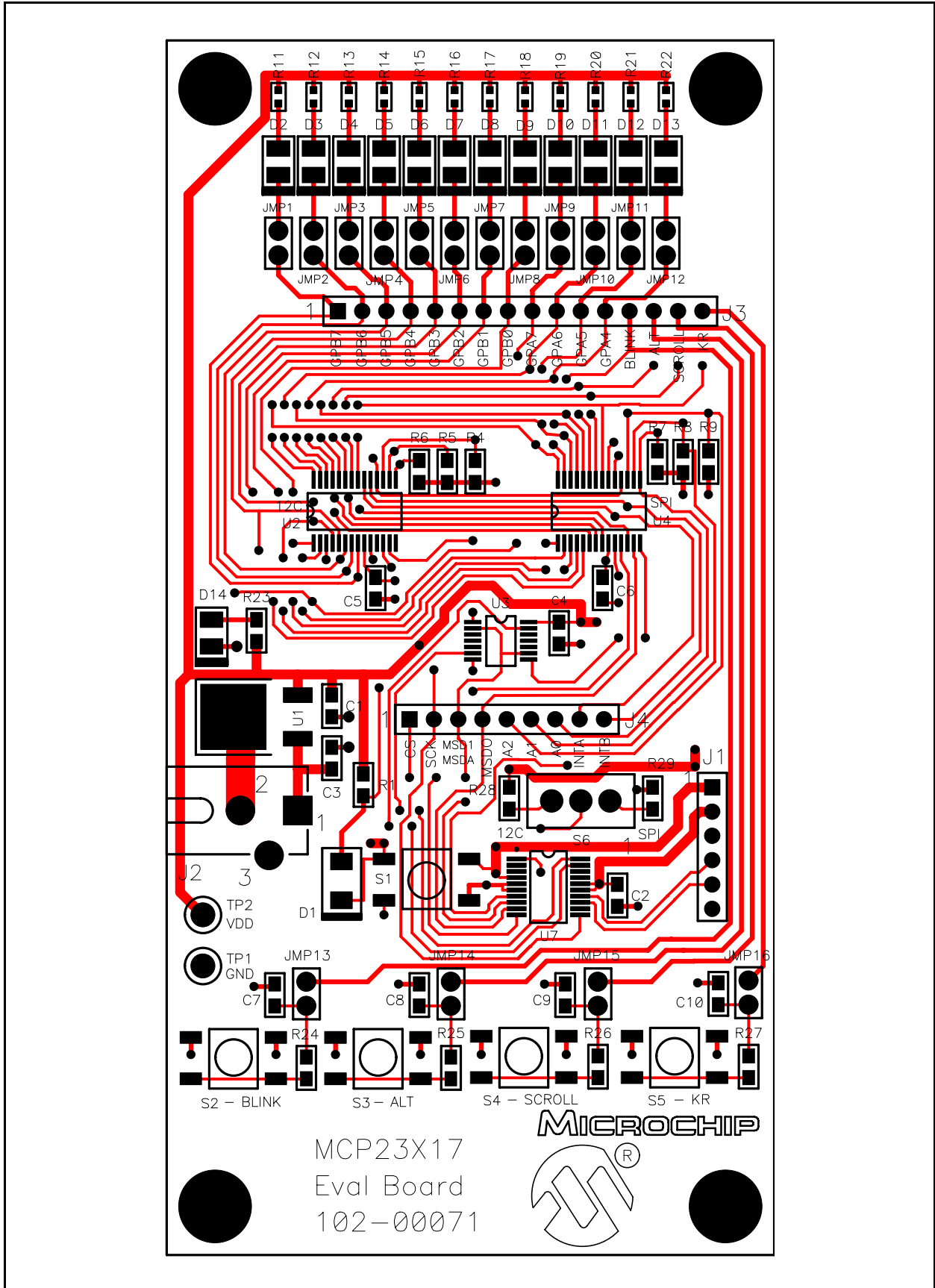


Rev	Description	Date
1	Initial Design	11/29/06

Title: MCP23X17 Evaluation Board		Rev	1
Size	B	Eng. P. Richards	
Date:	11/29/06	Drawn by: J.Garcia	
		Sheet 3 of	3

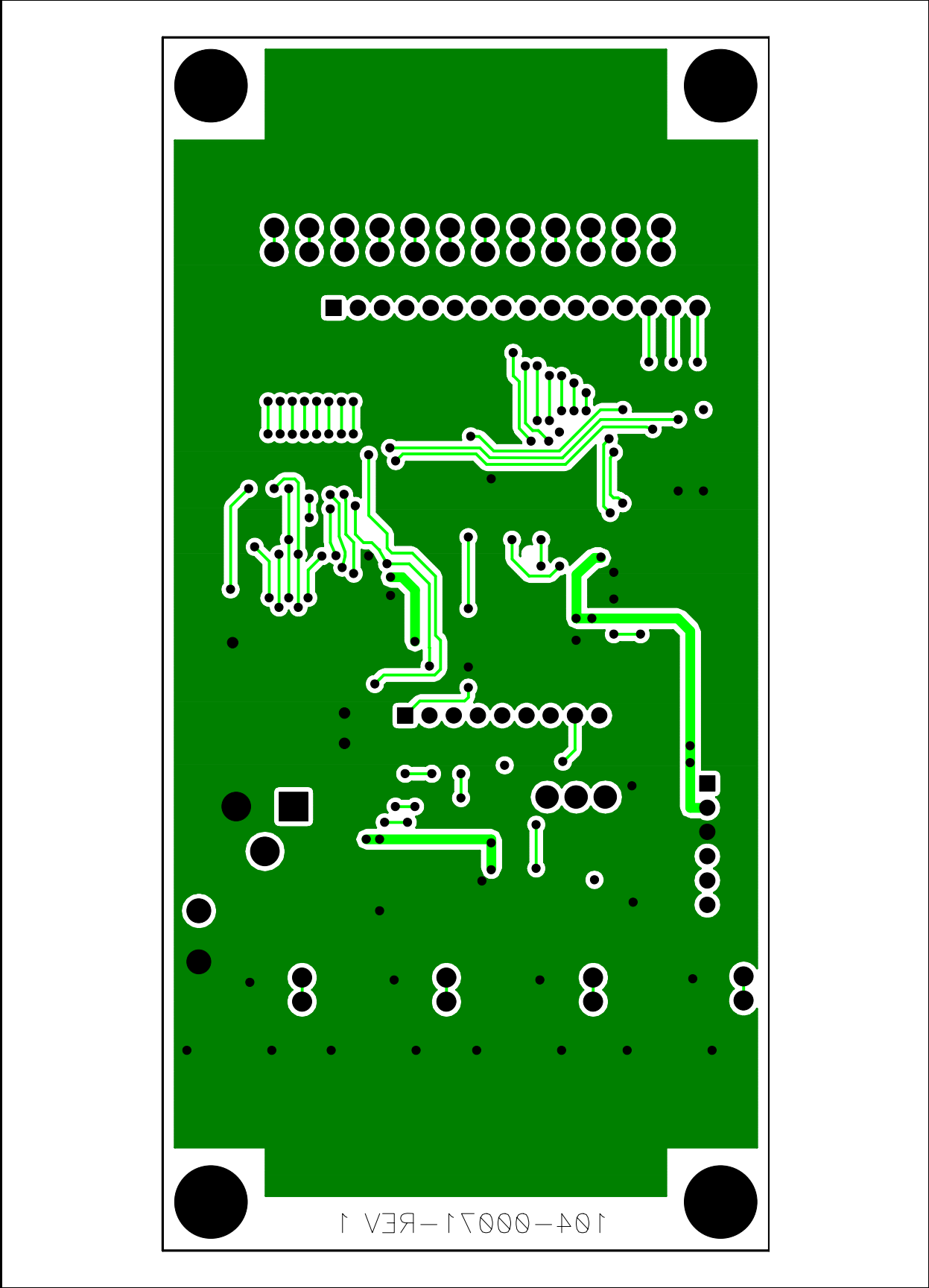
Filename: 103-00071\_REV-1\_SCH.sch

## A.5 BOARD - TOP LAYER (WITH SILK SCREEN)



# MCP23X17 Evaluation Board User's Guide

## A.6 BOARD - BOTTOM LAYER



## Appendix B. Bill Of Materials (BOM)

**TABLE B-1: BILL OF MATERIALS (BOM)**

Qty	Reference	Description	Manufacturer	Part Number
9	C1,C2,C4,C5, C6,C7C8,C9, C10	CAP .1UF 16V CERAMIC X7R 0805	Panasonic - ECG	ECJ-2VB1C104K
1	C3	CAP CER .33UF 16V Y5V 0805	Murata Electronics North America	GRM219F51C334ZA01D
1	D1	RECT SCHOTTKY 1A 20V DO-214AA	Micro Commercial Co.	SMB5817-TP
12	D2 -D13	LED RED 635NM PLCC 120DEG	LITE-ON INC.	LTST-T670EKT
1	D14	LED GREEN 565NM PLCC 120DEG	LITE-ON INC.	LTST-T670GKT
16	JMP1- JMP16	Do Not populate	—	—
1	J1	Do Not populate	—	—
1	J4	Do Not populate	—	—
1	J3	Do Not populate	—	—
1	J2	CONN POWER JACK 2.5MM PCB CIRC	CUI Inc.	PJ-102B
1	U7	18/20-Pin Enhanced Flash Microcontrol- lers with nanoWatt Technology	Microchip Technology Inc.	PIC16F818
12	R11 - R22	RES 475 OHM 1/10W 1% 0603 SMD	Panasonic - ECG	ERJ-3EKF4750V
6	R4 -R9	RES 0.0 OHM 1/8W 5% 0805 SMD	Panasonic - ECG	ERJ-6GEY0R00V
3	R1,R28, R29	RES 10.0K OHM 1/8W 1% 0805 SMD	Panasonic - ECG	ERJ-6ENF1002V
4	R24 -R27	RES 100 OHM 1/8W 1% 0805 SMD	Panasonic - ECG	ERJ-6ENF1000V
1	R23	RES 475 OHM 1/8W 1% 0805 SMD	Panasonic - ECG	ERJ-6ENF4750V
1	S6	SWITCH,SLD,MIN,SPDT,ON-ON,	JAMECO VALUEPRO	G4050X
5	S1-S5	SWITCH TACT 6MM SMD MOM 160GF	Omron Electronics Inc.	B3S-1000
1	TP1	TEST POINT PC MULTI PURPOSE BLK	Keystone Electronics	5011
1	TP2	TEST POINT PC MULTI PURPOSE RED	Keystone Electronics	5010
1	U1	IC POSITIVE REGULATOR 5V D2PAK	STMicroelectronics	L7805CD2T-TR
1	U3	IC QUAD BILATERAL SWITCH 14TSSOP	Texas Instruments	CD74HC4066PWR
1	U4	16 Bit I/O Expander with Serial Interface	Microchip Technology Inc.	MCP23S17-E/SS
1	U2	16 Bit I/O Expander with Serial Interface	Microchip Technology Inc.	MCP23017-E/SS

**Note 1:** The components listed in this Bill of Materials are representative of the PCB assembly. The released BOM used in manufacturing uses all RoHS-compliant components.



**MICROCHIP**

---

---

## WORLDWIDE SALES AND SERVICE

---

---

### AMERICAS

#### Corporate Office

2355 West Chandler Blvd.  
Chandler, AZ 85224-6199  
Tel: 480-792-7200  
Fax: 480-792-7277  
Technical Support:  
<http://support.microchip.com>  
Web Address:  
[www.microchip.com](http://www.microchip.com)

#### Atlanta

Alpharetta, GA  
Tel: 770-640-0034  
Fax: 770-640-0307

#### Boston

Westborough, MA  
Tel: 774-760-0087  
Fax: 774-760-0088

#### Chicago

Itasca, IL  
Tel: 630-285-0071  
Fax: 630-285-0075

#### Dallas

Addison, TX  
Tel: 972-818-7423  
Fax: 972-818-2924

#### Detroit

Farmington Hills, MI  
Tel: 248-538-2250  
Fax: 248-538-2260

#### Kokomo

Kokomo, IN  
Tel: 765-864-8360  
Fax: 765-864-8387

#### Los Angeles

Mission Viejo, CA  
Tel: 949-462-9523  
Fax: 949-462-9608

#### Santa Clara

Santa Clara, CA  
Tel: 408-961-6444  
Fax: 408-961-6445

#### Toronto

Mississauga, Ontario,  
Canada  
Tel: 905-673-0699  
Fax: 905-673-6509

### ASIA/PACIFIC

#### Asia Pacific Office

Suites 3707-14, 37th Floor  
Tower 6, The Gateway  
Harbour City, Kowloon  
Hong Kong  
Tel: 852-2401-1200  
Fax: 852-2401-3431

#### Australia - Sydney

Tel: 61-2-9868-6733  
Fax: 61-2-9868-6755

#### China - Beijing

Tel: 86-10-8528-2100  
Fax: 86-10-8528-2104

#### China - Chengdu

Tel: 86-28-8676-6200  
Fax: 86-28-8676-6599

#### China - Fuzhou

Tel: 86-591-8750-3506  
Fax: 86-591-8750-3521

#### China - Hong Kong SAR

Tel: 852-2401-1200  
Fax: 852-2401-3431

#### China - Qingdao

Tel: 86-532-8502-7355  
Fax: 86-532-8502-7205

#### China - Shanghai

Tel: 86-21-5407-5533  
Fax: 86-21-5407-5066

#### China - Shenyang

Tel: 86-24-2334-2829  
Fax: 86-24-2334-2393

#### China - Shenzhen

Tel: 86-755-8203-2660  
Fax: 86-755-8203-1760

#### China - Shunde

Tel: 86-757-2839-5507  
Fax: 86-757-2839-5571

#### China - Wuhan

Tel: 86-27-5980-5300  
Fax: 86-27-5980-5118

#### China - Xian

Tel: 86-29-8833-7250  
Fax: 86-29-8833-7256

### ASIA/PACIFIC

#### India - Bangalore

Tel: 91-80-4182-8400  
Fax: 91-80-4182-8422

#### India - New Delhi

Tel: 91-11-4160-8631  
Fax: 91-11-4160-8632

#### India - Pune

Tel: 91-20-2566-1512  
Fax: 91-20-2566-1513

#### Japan - Yokohama

Tel: 81-45-471-6166  
Fax: 81-45-471-6122

#### Korea - Gumi

Tel: 82-54-473-4301  
Fax: 82-54-473-4302

#### Korea - Seoul

Tel: 82-2-554-7200  
Fax: 82-2-558-5932 or  
82-2-558-5934

#### Malaysia - Penang

Tel: 60-4-646-8870  
Fax: 60-4-646-5086

#### Philippines - Manila

Tel: 63-2-634-9065  
Fax: 63-2-634-9069

#### Singapore

Tel: 65-6334-8870  
Fax: 65-6334-8850

#### Taiwan - Hsin Chu

Tel: 886-3-572-9526  
Fax: 886-3-572-6459

#### Taiwan - Kaohsiung

Tel: 886-7-536-4818  
Fax: 886-7-536-4803

#### Taiwan - Taipei

Tel: 886-2-2500-6610  
Fax: 886-2-2508-0102

#### Thailand - Bangkok

Tel: 66-2-694-1351  
Fax: 66-2-694-1350

### EUROPE

#### Austria - Wels

Tel: 43-7242-2244-3910  
Fax: 43-7242-2244-393

#### Denmark - Copenhagen

Tel: 45-4450-2828  
Fax: 45-4485-2829

#### France - Paris

Tel: 33-1-69-53-63-20  
Fax: 33-1-69-30-90-79

#### Germany - Munich

Tel: 49-89-627-144-0  
Fax: 49-89-627-144-44

#### Italy - Milan

Tel: 39-0331-742611  
Fax: 39-0331-466781

#### Netherlands - Drunen

Tel: 31-416-690399  
Fax: 31-416-690340

#### Spain - Madrid

Tel: 34-91-708-08-90  
Fax: 34-91-708-08-91

#### UK - Wokingham

Tel: 44-118-921-5869  
Fax: 44-118-921-5820

07/21/06



Компания «ЭлектроПласт» предлагает заключение долгосрочных отношений при поставках импортных электронных компонентов на взаимовыгодных условиях!

Наши преимущества:

- Оперативные поставки широкого спектра электронных компонентов отечественного и импортного производства напрямую от производителей и с крупнейших мировых складов;
- Поставка более 17-ти миллионов наименований электронных компонентов;
- Поставка сложных, дефицитных, либо снятых с производства позиций;
- Оперативные сроки поставки под заказ (от 5 рабочих дней);
- Экспресс доставка в любую точку России;
- Техническая поддержка проекта, помощь в подборе аналогов, поставка прототипов;
- Система менеджмента качества сертифицирована по Международному стандарту ISO 9001;
- Лицензия ФСБ на осуществление работ с использованием сведений, составляющих государственную тайну;
- Поставка специализированных компонентов (Xilinx, Altera, Analog Devices, Intersil, Interpoint, Microsemi, Aeroflex, Peregrine, Syfer, Eurofarad, Texas Instrument, Miteq, Cobham, E2V, MA-COM, Hittite, Mini-Circuits, General Dynamics и др.);

Помимо этого, одним из направлений компании «ЭлектроПласт» является направление «Источники питания». Мы предлагаем Вам помощь Конструкторского отдела:

- Подбор оптимального решения, техническое обоснование при выборе компонента;
- Подбор аналогов;
- Консультации по применению компонента;
- Поставка образцов и прототипов;
- Техническая поддержка проекта;
- Защита от снятия компонента с производства.



#### Как с нами связаться

**Телефон:** 8 (812) 309 58 32 (многоканальный)

**Факс:** 8 (812) 320-02-42

**Электронная почта:** [org@eplast1.ru](mailto:org@eplast1.ru)

**Адрес:** 198099, г. Санкт-Петербург, ул. Калинина, дом 2, корпус 4, литера А.