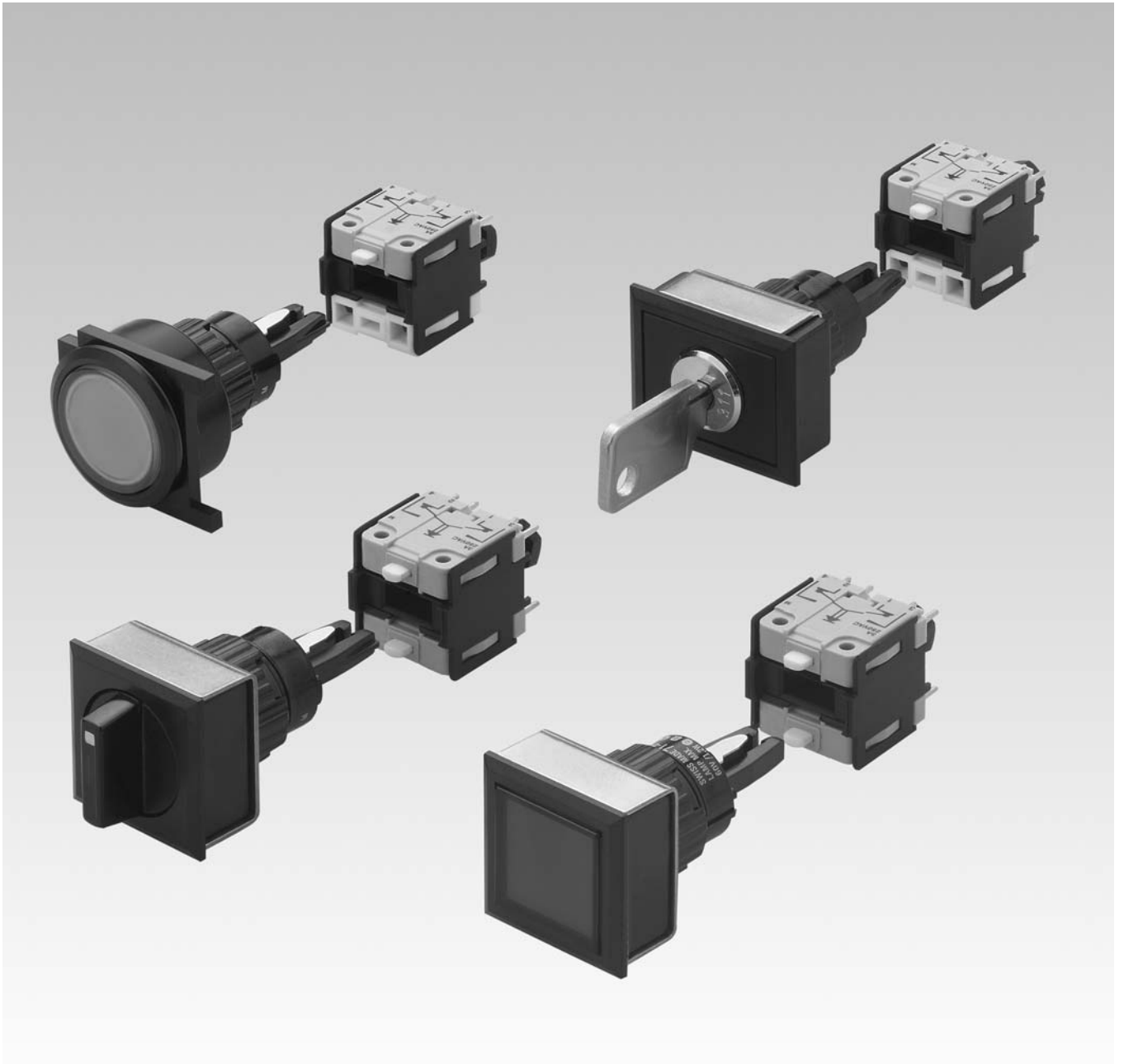


EAO – Your Expert Partner for
Human Machine Interfaces



EAO Product Information

Series 71



| | |
|------------------------------|----|
| Description | 3 |
| Product Assembly | 4 |
| Devices flush mounting | 8 |
| Accessories..... | 12 |
| Technical Data..... | 21 |
| Application guidelines..... | 22 |
| Drawings..... | 23 |
| Index..... | 29 |

Product Information

General notes

The system switch 71 is a pushbutton system of modular design, which is especially suited for the assembly of input units. It consists of a lens, front module, actuator and switching element. It has five decisive advantages:

1. Attractive front design

Various attractively designed low profile actuators guarantee ergonomic and user-friendly operation.

2. A multitude of combinations

Due to a clever modular assembly system - based on PCB technology - with a standard print layout, this system component tops also anything in flexibility.

3. Compact operation unit

The extremely small dimensions of the switching elements and the use of PCB's give a broad scope of benefits where space is a premium.

4. Efficient manufacture

The print adaptable switching element can be directly soldered to the PCB without the aid of additional mechanical or electrical mounting components. This means reduced production costs, reduction of wiring errors and bad contacts.

5. A clever way of mounting

Front module and PCB module can be simple assembled and disassembled without tools due to the patented interlocking pin mechanism.

Mounting

All actuators are plugged into the mounting cut-out from the front via front module. It is then fixed into place from the back with the mounting clip and the locking nut. The max. torque on the locking nut is limited to 50 Ncm.

The switching element can be pre-mounted on the PCB and later connected to the actuator by insertion of the position legs and securing with the interlocking pin mechanism. Additional adjusting or spacers are not required.

It has to pay attention, that there will be no kind of mechanical stress on the PCB (eg. caused by tension on the wiring).

Lenses

The flat, transparent lenses are available in various colours. The round version can also be supplied in aluminium.

Anodized aluminium parts can have visible variations due production-technical reasons.

Illumination

T1 ³/₄ midget groove LED's in red, blue, green, yellow and white or filament lamps give superb illumination and can be supplied in 6, 12, 24, or 48 V.

Luminosity and wave length scattering caused by the technology used in the LED manufacturing processes may lead to visual differences in our products.

Keylock switch

Standard lock (Index D). Standard lock number is 311. If the lock number is not specified, we will supply standard number 311.

An additional 134 special locks (Index X) are available on request.

Master keys for lock numbers 311 ... 445 may be ordered by quoting Typ-Nr. 31-989.300. Two keys are supplied with each keylock switch. Spare keys (Index D) for standard locks may be ordered by quoting Typ-Nr. 31-989.xxx (please state the lock number).

Specimen order

Pushbutton :

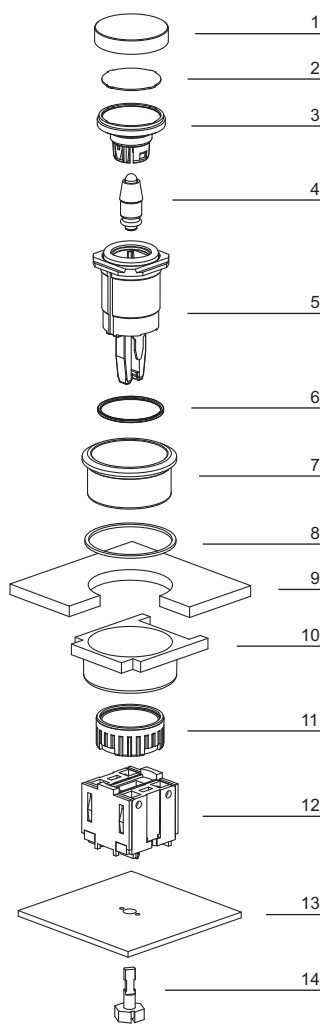
- Illuminated pushbutton actuator, momentary action, 25 mm dia. 71-611.0

Essential accessories :

- Lens plastic green transparent, 25 mm dia. 61-9642.7
- Single-LED T1 ³/₄ MG, 24 VDC, green 10-2J12.1065
- Front bezel set for Illuminated Pushbutton, Aluminium natural, 25 mm dia. 61-9933.0
- Switching element 1 NC + 1 NO 71-671.026

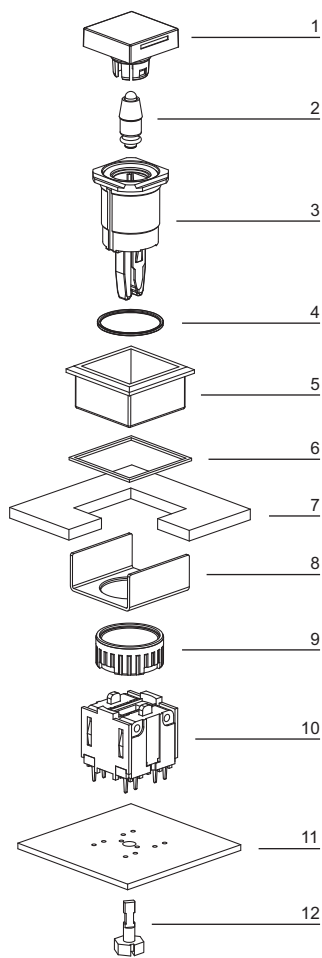
*We reserve the right to modify technical data
All dimensions in mm*

Indicator, flush mounting



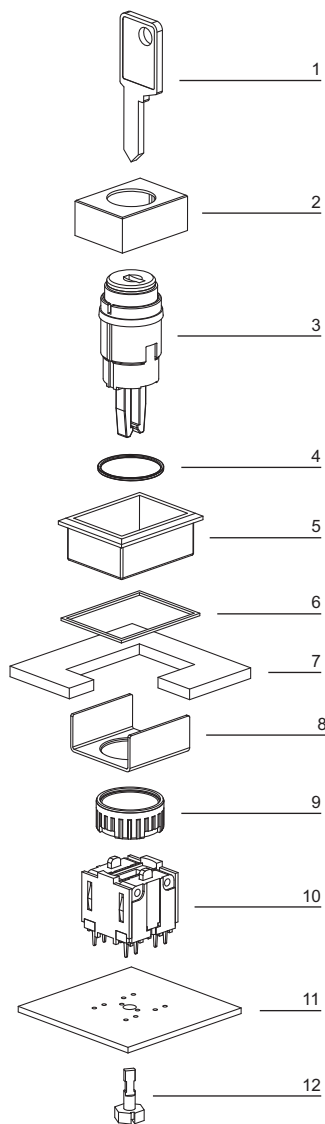
- 1 Lens
- 2 Marking plate
- 3 Lens holder
- 4 LED
- 5 Actuator housing
- 6 Sealing
- 7 Front bezel
- 8 Sealing
- 9 Front plate
- 10 Thrust piece
- 11 Fixing nut
- 12 Illumination element
- 13 Printed circuit board
- 14 Interlocking pin

Pushbutton illuminative, flush mounting



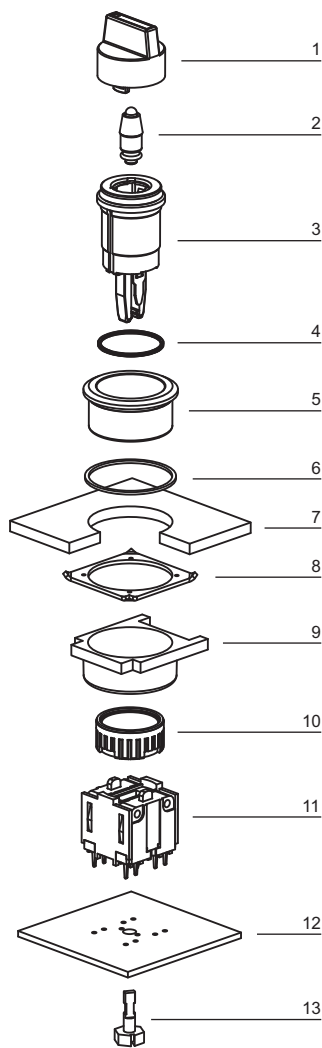
- 1 Lens
- 2 LED
- 3 Actuator housing
- 4 Sealing
- 5 Front bezel
- 6 Sealing
- 7 Front plate
- 8 Fixing bracket
- 9 Fixing nut
- 10 Switching element
- 11 Printed circuit board
- 12 Interlocking pin

Keylock switch, flush mounting



- 1 Key
- 2 Keylock front bezel
- 3 Keylock switch actuator
- 4 Sealing
- 5 Front bezel
- 6 Sealing
- 7 Front plate
- 8 Fixing bracket
- 9 Fixing nut
- 10 Switching element
- 11 Printed circuit board
- 12 Interlocking pin

Selector switch illuminative, flush mounting







- 1 Lever
- 2 LED
- 3 Selector switch actuator
- 4 Sealing
- 5 Front bezel
- 6 Sealing
- 7 Front plate
- 8 Anti-twist ring
- 9 Thrust piece
- 10 Fixing nut
- 11 Switching element
- 12 Printed circuit board
- 13 Interlocking pin

Indicator actuator, flush mounting

Actuators usable for front dimensions: \square 24 x 24 mm | \square 24 x 30 mm | 25 mm dia.



Essential Accessories:

-  Front bezel set for Indicators and Illuminated pushbutton, flush mounting page 14
-  Illumination element page 17
-  Lens plastic, flush mounting page 12
-  Single-LED page 19

| | Front protection | Typ-Nr. | Mounting dimensions | Technical drawing | Circuit drawing |  |
|---|------------------|-----------------|---------------------|-------------------|-----------------|---|
| Indicator actuator, flush mounting | IP 65 | 71-600.0 | 1 | 6 | 3 | 0.005 |





Mounting dimensions from page 24, Technical drawing from page 24, Circuit drawing from page 26

Illuminated pushbutton actuator, flush mounting

Actuators usable for front dimensions: \square 24 x 24 mm | \square 24 x 30 mm | 25 mm dia.



Essential Accessories:

-  Front bezel set for Indicators and Illuminated pushbutton, flush mounting page 14
-  Lens plastic, flush mounting page 12
-  Single-LED page 19
-  Switching element for Illuminated pushbutton | Mushroom-head pushbutton page 18

| | Front protection | Switching action | Typ-Nr. | Mounting dimensions | Technical drawing | Circuit drawing |  |
|--|------------------|------------------|-----------------|---------------------|-------------------|-----------------|---|
| Illuminated pushbutton actuator, flush mounting | IP 65 | MA | 71-612.0 | 1 | 6 | 5 | 0.005 |
| | | M | 71-611.0 | 1 | 6 | 4 | 0.005 |




Switching action: MA = Maintained action, M = Momentary action

Mounting dimensions from page 24, Technical drawing from page 24, Circuit drawing from page 26

Mushroom-head pushbutton actuator, flush mounting



Essential Accessories:

-  Front bezel set for Mushroom-head pushbutton, flush mounting page 15
-  Mushroom-head cap page 13
-  Switching element for Illuminated pushbutton | Mushroom-head pushbutton page 18

| | Front protection | Switching action | Ø 32 mm Typ-Nr. | Mounting dimensions | Technical drawing | Circuit drawing | |
|--|------------------|------------------|--------------------|---------------------|-------------------|-----------------|-------|
| Mushroom-head pushbutton actuator, flush mounting | IP 65 | MA | 71-612.0 | 2 | 5 | 1 | 0.005 |
| | | M | 71-611.0 | 2 | 5 | 2 | 0.005 |

Switching action: MA = Maintained action, M = Momentary action




Mounting dimensions from page 24, Technical drawing from page 24, Circuit drawing from page 26

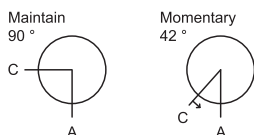
Keylock switch actuator 2 positions, flush mounting

Actuators usable for front dimensions: \square 24 x 24 mm | \square 24 x 30 mm | 25 mm dia.



Essential Accessories:

-  Front bezel set for Keylock switch, flush mounting page 15
-  Keylock front bezel for keylock switch, flush mounting page 13
-  Switching element for Keylock- and Selector switch 2 positions page 18



| | Front protection | Switching action | Key remove | Typ-Nr. | Mounting dimensions | Technical drawing | Circuit drawing | |
|--|------------------|------------------|------------|-------------------|---------------------|-------------------|-----------------|-------|
| Keylock switch actuator 2 positions, flush mounting Position A : Basic position Standard lock 311 | IP 65 | MA | A | 71-622.0/D | 1 | 7 | 11 | 0.003 |
| | | | C | 71-623.0/D | 1 | 7 | 11 | 0.003 |
| | | | C + A | 71-624.0/D | 1 | 7 | 11 | 0.003 |
| | | M | A | 71-621.0/D | 1 | 7 | 10 | 0.003 |

Switching action: MA = Maintained action, M = Momentary action

Mounting dimensions from page 24, Technical drawing from page 24, Circuit drawing from page 26

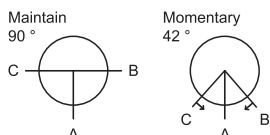
Keylock switch actuator 3 positions, flush mounting

Actuators usable for front dimensions: \square 24 x 24 mm | \square 24 x 30 mm | 25 mm dia.



Essential Accessories:

- Front bezel set for Keylock switch, flush mounting page 15
- Keylock front bezel for keylock switch, flush mounting page 13
- Switching element for Keylock- and Selector switch 3 positions page 18



| | Front protection | Switching action | Key remove | Typ-Nr. | Mounting dimensions | Technical drawing | Circuit drawing | |
|--|------------------|------------------|------------|-------------------|---------------------|-------------------|-----------------|-------|
| Keylock switch actuator 3 positions, flush mounting Position A : Basic position Standard lock 311 | IP 65 | MA-0-MA | A | 71-632.0/D | 1 | 7 | 13 | 0.003 |
| | | | C | 71-633.0/D | 1 | 7 | 13 | 0.003 |
| | | | C + A + B | 71-635.0/D | 1 | 7 | 13 | 0.003 |
| | | | C + B | 71-634.0/D | 1 | 7 | 13 | 0.003 |
| | | MA-0-M | A | 71-636.0/D | 1 | 7 | 12 | 0.003 |
| | | | C + A | 71-637.0/D | 1 | 7 | 12 | 0.003 |
| | | M-0-MA | A | 71-638.0/D | 1 | 7 | 9 | 0.003 |
| | | | A + B | 71-639.0/D | 1 | 7 | 9 | 0.003 |
| | | M-0-M | A | 71-631.0/D | 1 | 7 | 8 | 0.003 |

Switching action: MA = Maintained action, M = Momentary action

Mounting dimensions from page 24, Technical drawing from page 24, Circuit drawing from page 26

Selector switch actuator 2 positions, flush mounting

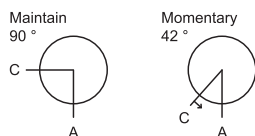
illuminative

Actuators usable for front dimensions: \square 24 x 24 mm | 25 mm dia.



Essential Accessories:

- Front bezel set for Selector switch, flush mounting page 16
- Lever, flush mounting page 14
- Single-LED page 19
- Switching element for Keylock- and Selector switch 2 positions page 18



| | Front protection | Switching action | Typ-Nr. | Mounting dimensions | Technical drawing | Circuit drawing | |
|--|------------------|------------------|-----------------|---------------------|-------------------|-----------------|-------|
| Selector switch actuator 2 positions, flush mounting Position A : Basic position | IP 65 | MA | 71-642.0 | 1 | 8 | 15 | 0.003 |
| | | M | 71-641.0 | 1 | 8 | 14 | 0.003 |

Switching action: MA = Maintained action, M = Momentary action

Mounting dimensions from page 24, Technical drawing from page 24, Circuit drawing from page 26

Selector switch actuator 3 positions, flush mounting

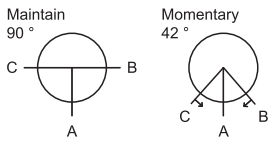
illuminative

Actuators usable for front dimensions: 24 x 24 mm | 25 mm dia.



Essential Accessories:

- Front bezel set for Selector switch, flush mounting page 16
- Lever, flush mounting page 14
- Single-LED page 19
- Switching element for Keylock- and Selector switch 3 positions page 18



| | Front protection | Switching action | Typ-Nr. | Mounting dimensions | Technical drawing | Circuit drawing | |
|--|------------------|------------------|-----------------|---------------------|-------------------|-----------------|-------|
| Selector switch actuator 3 positions, flush mounting Position A : Basic position | IP 65 | MA-0-MA | 71-652.0 | 1 8 19 | | | 0.003 |
| | | MA-0-M | 71-656.0 | 1 8 18 | | | 0.003 |
| | | M-0-MA | 71-658.0 | 1 8 17 | | | 0.003 |
| | | M-0-M | 71-651.0 | 1 8 16 | | | 0.003 |


Switching action: MA = Maintained action, M = Momentary action

Mounting dimensions from page 24, Technical drawing from page 24, Circuit drawing from page 26

Front

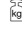
Lens plastic, flush mounting

mat

| | Lens | ∅ 24 x 24 mm Typ-Nr. | ∅ 24 x 30 mm Typ-Nr. | ∅ 25 mm Typ-Nr. |  |
|---|------------------------------|-------------------------|-------------------------|--------------------|---|
| Lens plastic, flush mounting illuminative | blue transparent flush | 61-9671.6 | 61-9681.6 | 61-9642.6 | 0.002 |
| | colourless transparent flush | 61-9671.7 | 61-9681.7 | 61-9642.7 | 0.002 |
| | green transparent flush | 61-9671.5 | 61-9681.5 | 61-9642.5 | 0.002 |
| | orange transparent flush | 61-9671.3 | 61-9681.3 | 61-9642.3 | 0.002 |
| | red transparent flush | 61-9671.2 | 61-9681.2 | 61-9642.2 | 0.002 |
| | smoked transparent flush | 61-9671.1 | 61-9681.1 | 61-9642.1 | 0.002 |
| | yellow transparent flush | 61-9671.4 | 61-9681.4 | 61-9642.4 | 0.002 |
| non-illuminative | black opaque flush | 61-9771.0 | 61-9781.0 | | 0.002 |
| | grey opaque flush | 61-9771.8 | 61-9781.8 | | 0.002 |
| | white translucent flush | 61-9771.9 | 61-9781.9 | | 0.002 |



Lens plastic with symbol

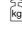
| | Symbol | Lens | ∅ 25 mm Typ-Nr. |  |
|--|----------|------------------------|--------------------|---|
| Lens plastic with symbol flush - level, illuminative | ON/OFF | blue transparent | 61-9643.602 | 0.002 |
| | | colourless transparent | 61-9643.702 | 0.002 |
| | | green transparent | 61-9643.502 | 0.002 |
| | | red transparent | 61-9643.202 | 0.002 |
| | Ring | blue transparent | 61-9643.601 | 0.002 |
| | | colourless transparent | 61-9643.701 | 0.002 |
| | | green transparent | 61-9643.501 | 0.002 |
| | | orange transparent | 61-9643.301 | 0.002 |
| | | red transparent | 61-9643.201 | 0.002 |
| | Stand by | blue transparent | 61-9643.603 | 0.002 |
| | | colourless transparent | 61-9643.703 | 0.002 |
| | | green transparent | 61-9643.503 | 0.002 |
| | | red transparent | 61-9643.203 | 0.002 |



The silvery coat is being applied on the lens (screen print) with an additional protective lacquer.

Marking plate for lens plastic

can be hot stamped

| | Marking plate | Typ-Nr. |  |
|--|--------------------------------|------------------|---|
| Marking plate for lens plastic only applicable with Lens round Typ-Nr. 61-9642.X | Plastic colourless transparent | 61-9707.7 | 0.001 |



Lens metal with spot

mat

| | Lens | Ø 25 mm Typ-Nr. |  |
|-----------------------------|-----------------------------|--------------------|---|
| Lens metal with spot | Aluminium black flush | 61-9841.0A | 0.002 |
| | Aluminium blue flush | 61-9841.6A | 0.002 |
| | Aluminium gold flush | 61-9841.4A | 0.002 |
| | Aluminium natural flush | 61-9841.8A | 0.002 |
| | Aluminium olive-green flush | 61-9841.5A | 0.002 |
| | Aluminium red flush | 61-9841.2A | 0.002 |




Lens metal

mat

| | Lens | Ø 25 mm Typ-Nr. |  |
|------------------------------|-----------------------|--------------------|---|
| Lens metal convex | Aluminium black | 61-9842.0 | 0.003 |
| | Aluminium blue | 61-9842.6 | 0.003 |
| | Aluminium gold | 61-9842.4 | 0.003 |
| | Aluminium natural | 61-9842.8 | 0.003 |
| | Aluminium olive-green | 61-9842.5 | 0.003 |
| | Aluminium red | 61-9842.2 | 0.003 |
| flush | Aluminium black | 61-9841.0 | 0.002 |
| | Aluminium blue | 61-9841.6 | 0.002 |
| | Aluminium gold | 61-9841.4 | 0.002 |
| | Aluminium natural | 61-9841.8 | 0.002 |
| | Aluminium olive-green | 61-9841.5 | 0.002 |
| | Aluminium red | 61-9841.2 | 0.002 |




Mushroom-head cap

| | Mushroom had cap | Ø 32 mm Typ-Nr. |  |
|--------------------------|-----------------------|--------------------|---|
| Mushroom-head cap | Plastic black opaque | 61-9593.0 | 0.004 |
| | Plastic green opaque | 61-9593.5 | 0.004 |
| | Plastic red opaque | 61-9593.2 | 0.004 |
| | Plastic yellow opaque | 61-9593.4 | 0.004 |




Keylock front bezel for keylock switch, flush mounting

| | Keylock front bezel | Ø 24 x 24 mm Typ-Nr. | Ø 24 x 30 mm Typ-Nr. | Ø 25 mm Typ-Nr. |  |
|---|---------------------|-------------------------|-------------------------|--------------------|---|
| Keylock front bezel for keylock switch, flush mounting | Plastic black | 61-9220.0 | 61-9230.0 | 61-9210.0 | 0.001 |




Lever, flush mounting

| | Lever | Bar colour | Typ-Nr. |  kg |
|---|---------------|------------|-------------------|--|
| Lever, flush mounting illuminative | Plastic black | blue | 61-9028.60 | 0.001 |
| | | green | 61-9028.50 | 0.001 |
| | | orange | 61-9028.30 | 0.001 |
| | | red | 61-9028.20 | 0.001 |
| | | yellow | 61-9028.40 | 0.001 |
| | Plastic grey | blue | 61-9029.60 | 0.001 |
| | | green | 61-9029.50 | 0.001 |
| | | orange | 61-9029.30 | 0.001 |
| | | red | 61-9029.20 | 0.001 |
| | | yellow | 61-9029.40 | 0.001 |
| non-illuminative | Plastic black | black | 61-9028.0 | 0.001 |
| | | white | 61-9028.9 | 0.001 |
| | Plastic grey | grey | 61-9029.8 | 0.001 |
| | | white | 61-9029.9 | 0.001 |



Front bezel set for Indicators and Illuminated pushbutton, flush mounting

| | Front bezel | \varnothing 24 x 24 mm Typ-Nr. | \square 24 x 30 mm Typ-Nr. | \varnothing 25 mm Typ-Nr. | Mounting dimensions |  kg |
|--|-----------------------|-------------------------------------|---------------------------------|--------------------------------|---------------------|--|
| Front bezel set for Indicators and Illuminated pushbutton, flush mounting | Plastic black | 61-9930.0 | 61-9931.0 | 61-9933.10 | 1 | 0.008 |
| | Plastic silver | 61-9930.4 | 61-9931.4 | | 1 | 0.008 |
| | Aluminium black | | | 61-9933.1 | 1 | 0.006 |
| | Aluminium blue | | | 61-9933.6 | 1 | 0.006 |
| | Aluminium gold | | | 61-9933.4 | 1 | 0.006 |
| | Aluminium natural | | | 61-9933.0 | 1 | 0.006 |
| | Aluminium olive-green | | | 61-9933.5 | 1 | 0.006 |
| | Aluminium red | | | 61-9933.2 | 1 | 0.006 |



Mounting dimensions from page 24

Front bezel set for Mushroom-head pushbutton, flush mounting

| | Front bezel | Ø 40 mm Typ-Nr. | Ø 25 mm Typ-Nr. | Mounting dimensions | |
|---|-----------------------|--------------------|--------------------|---------------------|-------|
| Front bezel set for Mushroom-head pushbutton, flush mounting | Aluminium natural | 61-9934.8 | | 2 | 0.013 |
| | Aluminium black | | 61-9933.1 | 2 | 0.006 |
| | Aluminium blue | | 61-9933.6 | 2 | 0.006 |
| | Aluminium gold | | 61-9933.4 | 2 | 0.006 |
| | Aluminium natural | | 61-9933.0 | 2 | 0.006 |
| | Aluminium olive-green | | 61-9933.5 | 2 | 0.006 |
| | Aluminium red | | 61-9933.2 | 2 | 0.006 |
| | Plastic black | | 61-9933.10 | 2 | 0.008 |



Mounting dimensions from page 24

Front bezel set for Keylock switch, flush mounting


| | Front bezel | Ø 24 x 24 mm Typ-Nr. | Ø 24 x 30 mm Typ-Nr. | Ø 25 mm Typ-Nr. | Mounting dimensions | |
|---|-----------------------|-------------------------|-------------------------|--------------------|---------------------|-------|
| Front bezel set for Keylock switch, flush mounting | Plastic black | 61-9930.0 | 61-9931.0 | 61-9932.10 | 1 | 0.008 |
| | Plastic silver | 61-9930.4 | 61-9931.4 | | 1 | 0.008 |
| | Aluminium black | | | 61-9932.1 | 1 | 0.006 |
| | Aluminium blue | | | 61-9932.6 | 1 | 0.006 |
| | Aluminium gold | | | 61-9932.4 | 1 | 0.006 |
| | Aluminium natural | | | 61-9932.0 | 1 | 0.006 |
| | Aluminium olive-green | | | 61-9932.5 | 1 | 0.006 |
| | Aluminium red | | | 61-9932.2 | 1 | 0.006 |



With the round front bezel sets Ø25 mm the anti-twist ring is part of the sales-package.

Mounting dimensions from page 24

Front bezel set for Selector switch, flush mounting


| | Front bezel | ∅ 24 x 24 mm Typ-Nr. | ∅ 25 mm Typ-Nr. | Mounting dimensions |  |
|--|-----------------------|-------------------------|--------------------|---------------------|---|
| Front bezel set for Selector switch, flush mounting | Plastic black | 61-9936.0 | | 1 | 0.007 |
| | Aluminium black | | 61-9932.1 | 1 | 0.006 |
| | Aluminium blue | | 61-9932.6 | 1 | 0.006 |
| | Aluminium gold | | 61-9932.4 | 1 | 0.006 |
| | Aluminium natural | | 61-9932.0 | 1 | 0.006 |
| | Aluminium olive-green | | 61-9932.5 | 1 | 0.006 |
| | Aluminium red | | 61-9932.2 | 1 | 0.006 |
| | Plastic black | | 61-9932.10 | 1 | 0.008 |



With the round front bezel sets ∅25 mm the anti-twist ring is part of the sales-package.
Mounting dimensions from page 24

Front protective cap

for flush - level lenses only for protection IP 68


| | Front protective cap | Typ-Nr. |  |
|---|------------------------------|------------------|---|
| Front protective cap for front bezel set 24 x 30 mm, flush mounting | Silicone natural transparent | 61-9927.2 | 0.001 |
| for front bezel set round, flush mounting | Silicone natural transparent | 84-9103.7 | 0.001 |



ATTENTION

when using the front protection cover for push buttons the external sealing in the front bezel set and the silicone bellows in the actuator are to be removed !

Protective cover, flush mounting

| | ∅ 24 x 24 mm Typ-Nr. | ∅ 24 x 30 mm Typ-Nr. | ∅ 25 mm Typ-Nr. | Mounting dimensions | Technical drawing |  |
|--|-------------------------|-------------------------|--------------------|---------------------|-------------------|---|
| Protective cover, flush mounting hinged, transparent, with means for sealing | 61-9921.0 | | | 1 | 1 | 0.006 |
| | | 61-9922.0 | | 1 | 2 | 0.006 |
| slide by side, with means not for sealing | | | 61-9924.0 | 1 | 3 | 0.006 |



Mounting dimensions from page 24, Technical drawing from page 24

Blind plug, flush mounting

| | Blind plug | Ø 24 x 24 mm Typ-Nr. | Ø 24 x 30 mm Typ-Nr. | Ø 25 mm Typ-Nr. | Mounting dimensions | Technical drawing | |
|-----------------------------------|---------------|-------------------------|-------------------------|--------------------|---------------------|-------------------|-------|
| Blind plug, flush mounting | Plastic black | 61-9451.0 | 61-9452.0 | | 1 | | 0.006 |
| | | | | 61-9453.0 | 1 | 4 | 0.006 |



Mounting dimensions from page 24, Technical drawing from page 24

Master key

| | Typ-Nr. | |
|---|-------------------|-------|
| Master key Lock numbers 311 ... 445 (DOM) | 31-989.300 | 0.006 |



Spare key

| | Typ-Nr. | |
|--|-------------------|-------|
| Spare key Key lock switch, standard lock 311 (DOM) | 31-989.311 | 0.006 |



Other lock numbers on request

EMC Key protection cap

| | Typ-Nr. | |
|---|-----------------|-------|
| EMC Key protection cap Plastic black, for lock type DOM | 31-985.0 | 0.005 |



Backside

Illumination element

including Locking pin

| | Terminals | Typ-Nr. | Component layout | Circuit drawing | |
|-----------------------------|-----------|-------------------|------------------|-----------------|-------|
| Illumination element | P | 71-670.006 | 1 | 3 | 0.005 |




Terminals: P = PCB terminal

Component layout from page 23, Circuit drawing from page 26

Switching element for Illuminated pushbutton | Mushroom-head pushbutton

including Locking pin

| | Terminals | Contacts | Typ-Nr. | Component layout | | |
|--|-----------|-------------|-------------------|------------------|-----------------|---|
| | | | | Component layout | Circuit drawing |  |
| Switching element for Illuminated pushbutton Mushroom-head pushbutton | P | 1 NC + 1 NO | 71-671.026 | 1 | 7 | 0.005 |
| | | 2 NC + 2 NO | 71-672.026 | 1 | 6 | 0.005 |



Terminals: P = PCB terminal

Contacts: NC = Normally closed, NO = Normally open

Component layout from page 23, Circuit drawing from page 26

Switching element for Keylock- and Selector switch 2 positions

including Locking pin

| | Terminals | Contacts | Typ-Nr. | Component layout | | |
|---|-----------|-------------|-------------------|------------------|-----------------|---|
| | | | | Component layout | Circuit drawing |  |
| Switching element for Keylock- and Selector switch 2 positions | P | 1 NC + 1 NO | 71-671.026 | 1 | 7 | 0.005 |




Terminals: P = PCB terminal

Contacts: NC = Normally closed, NO = Normally open

Component layout from page 23, Circuit drawing from page 26

Switching element for Keylock- and Selector switch 3 positions

including Locking pin

| | Terminals | Contacts | Typ-Nr. | Component layout | | |
|---|-----------|-------------|-------------------|------------------|-----------------|---|
| | | | | Component layout | Circuit drawing |  |
| Switching element for Keylock- and Selector switch 3 positions | | 2 NC + 2 NO | 71-672.026 | 1 | 6 | 0.005 |



Contacts: NC = Normally closed, NO = Normally open

Component layout from page 23, Circuit drawing from page 26


Interlocking pin

| | Typ-Nr. |  |
|-------------------------|-----------------|---|
| Interlocking pin | 71-679.0 | 0.001 |




Illumination

Filament lamp

| | Socket | Operating voltage/-current | Typ-Nr. |  |
|----------------------|-----------|----------------------------|---------------------|---|
| Filament lamp | T1 3/4 MG | 12 VAC/DC, 75 mA | 10-1309.1309 | 0.001 |
| | | 14 VAC/DC, 80 mA | 10-1310.1319 | 0.001 |
| | | 18 VAC/DC, 40 mA | 10-1311.1249 | 0.001 |
| | | 24 VAC/DC, 35 mA | 10-1312.1229 | 0.001 |
| | | 28 VAC/DC, 30 mA | 10-1313.1209 | 0.001 |
| | | 28 VAC/DC, 40 mA | 10-1313.1249 | 0.001 |
| | | 36 VAC/DC, 20 mA | 10-1316.1179 | 0.001 |
| | | 36 VAC/DC, 30 mA | 10-1316.1209 | 0.001 |
| | | 48 VAC/DC, 20 mA | 10-1319.1179 | 0.001 |
| | | 48 VAC/DC, 25 mA | 10-1319.1199 | 0.001 |
| | | 6 VAC/DC, 120 mA | 10-1306.1349 | 0.001 |
| | | 6.3 VAC/DC, 200 mA | 10-1307.1369 | 0.001 |



Single-LED


| | Socket | Light colour | Operating voltage/-current | Typ-Nr. |  |
|-------------------|-----------|---------------|----------------------------|---------------------|---|
| Single-LED | T1 3/4 MG | blue | 12 VAC/DC, 7/14 mA | 10-2J09.1066 | 0.002 |
| | | | 24 VAC/DC, 7/14 mA | 10-2J12.1066 | 0.002 |
| | | | 28 VAC/DC, 7/14 mA | 10-2J13.1066 | 0.002 |
| | | | 48 VAC/DC, 4/8 mA | 10-2J19.1046 | 0.002 |
| | | | 6 VDC, 15 mA | 10-2J06.3146 | 0.002 |
| | | green | 12 VAC/DC, 4/7 mA | 10-2J09.1065 | 0.002 |
| | | | 24 VAC/DC, 4/7 mA | 10-2J12.1065 | 0.002 |
| | | | 28 VAC/DC, 4/7 mA | 10-2J13.1065 | 0.002 |
| | | | 48 VAC/DC, 2/4 mA | 10-2J19.1045 | 0.002 |
| | | | 6 VDC, 7 mA | 10-2J06.3145 | 0.002 |
| | | red | 12 VAC/DC, 7/14 mA | 10-2J09.1062 | 0.002 |
| | | | 24 VAC/DC, 7/14 mA | 10-2J12.1062 | 0.002 |
| | | | 28 VAC/DC, 7/14 mA | 10-2J13.1062 | 0.002 |
| | | | 48 VAC/DC, 4/8 mA | 10-2J19.1042 | 0.002 |
| | | | 6 VDC, 15 mA | 10-2J06.3142 | 0.002 |
| | | white diffuse | 12 VAC/DC, 7/14 mA | 10-2J09.1069 | 0.002 |
| | | | 24 VAC/DC, 7/14 mA | 10-2J12.1069 | 0.002 |
| | | | 28 VAC/DC, 7/14 mA | 10-2J13.1069 | 0.002 |
| | | | 48 VAC/DC, 4/8 mA | 10-2J19.1049 | 0.002 |
| | | | 6 VDC, 15 mA | 10-2J06.3149 | 0.002 |
| | | yellow | 12 VAC/DC, 7/14 mA | 10-2J09.1064 | 0.002 |
| | | | 24 VAC/DC, 7/14 mA | 10-2J12.1064 | 0.002 |
| | | | 28 VAC/DC, 7/14 mA | 10-2J13.1064 | 0.002 |
| | | | 48 VAC/DC, 4/8 mA | 10-2J19.1044 | 0.002 |
| | | | 6 VDC, 15 mA | 10-2J06.3144 | 0.002 |



Note:
AC operation through halve-wave rectifier possible, slight flickering can occur.


Assembling

Anti-twist ring

| | Typ-Nr. |  |
|---|------------------|---|
| Anti-twist ring Mounting hole size 22.5 mm dia. | 61-9912.0 | 0.002 |



Lens remover

| | Typ-Nr. |  |
|---------------------|------------------|---|
| Lens remover | 61-9730.0 | 0.011 |



Lamp remover


| | Typ-Nr. |  |
|---------------------|------------------|---|
| Lamp remover | 61-9740.0 | 0.003 |



CAUTION

A switching process might be released when replacing the lamp/LED !

Mounting tool

| | Typ-Nr. |  |
|--|---------------|---|
| Mounting tool for Indicator 16 mm dia. | 01-907 | 0.020 |



System switch 71

Switching system

Self-cleaning, double-break snap-action switching system with one NC- (Normally closed) and one NO-contact (Normally open).

Material

Lens

Polycarbonat (PC), as per UL 94 V0, or Aluminium anodized

Front bezel

Polyetherimid (PEI), as per UL 94 V0, or Aluminium anodized

Material of contact

AgNi, 2 µm gold plated

Switching element

Polyethylene terephthalate (PETP), as per UL 94 V0

Actuator housing

Polyetherimide (PEI), as per UL 94 V0

Mechanical characteristics

Terminals

PCB terminal, Brass gold plated

Actuating torque

Selector-/ Keylock switch 4 Ncm ... 8 Ncm

Actuating force

Pushbutton 2 N ... 3 N

Actuating travel

Pushbutton 3 mm

| | | |
|---------------------------|--------------|------------------|
| Selector-/ keylock switch | 2 positions | 3 positions |
| Momentary action | approx. 42 ° | approx. 2 x 42 ° |
| Maintained action | approx. 90 ° | approx. 2 x 90 ° |

Rebound time

≤1 ms

Mechanical lifetime

| | | |
|------------------------------|-----------|---------------------|
| Pushbutton maintained action | 1 million | cycles of operation |
| Pushbutton momentary action | 2 million | cycles of operation |
| Keylock switch | 50 000 | cycles of operation |
| Selector switch | 100 000 | cycles of operation |

Resistance to heat of soldering

| | |
|------------------|----------------|
| Manual soldering | 350 °C, 3 sec. |
| Flow soldering | 260 °C, 5 sec. |

Electrical characteristics

Contact resistance

Starting value (initial) ≤50 mΩ

Isolation resistance

≥10¹² Ω

Switch rating

Switch rating AC cosφ 0.7 ... 0.8

| | |
|---------|---------|
| Voltage | 250 VAC |
| Current | 3 A |

Switch rating DC

| | | |
|---------|--------|---------|
| Voltage | 24 VDC | 250 VDC |
| Current | 3 A | 0.5 |

Recommended minimum operational data

| | |
|---------|-------|
| Voltage | 5 VAC |
| Current | 10 mA |

Electric strength

2000 VAC, 50 Hz, 1 min. between all terminals and earth

Environmental conditions

Storage temperature

-40 °C ... +85 °C

Operating temperature

-25 °C ... +55 °C

Protection degree

Frontside IP 65

Shock resistance

(semi-sinusoidal)

max. 500 m/s², pulse width 11 ms, 3-axis, as per EN IEC 60068-2-27

Vibration resistance

(sinusoidal)

max. 100 m/s² at 10 Hz ... 500 Hz, as per EN IEC 60068-2-6

Climate resistance

Damp heat, state

56 days, +40 °C / 93 % relative humidity, as per EN IEC 60068-2-78

Approvals

Declaration of conformity

CE

Suppressor circuits

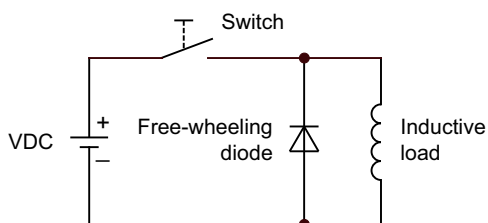
When switching inductive loads such as relays, DC motors, and DC solenoids, it is always important to absorb surges (e.g. with a diode) to protect the contacts. When these inductive loads are switched off, a counter emf can severely damage switch contacts and greatly shorten lifetime.

Fig. 1 shows an inductive load with a free-wheeling diode connected in parallel. This free-wheeling diode provides a path for the inductor current to flow when the current is interrupted by the switch. Without this free-wheeling diode, the voltage across the coil will be limited only by dielectric breakdown voltages of the circuit or parasitic elements of the coil. This voltage can be kilovolts in amplitude even when nominal circuit voltages are low (e.g. 12 VDC) see Fig. 2.

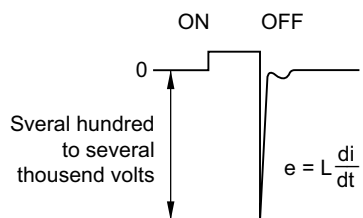
The free-wheeling diode should be chosen so that the reverse breakdown voltage is greater than the voltage driving the inductive load. The DC blocking voltage (VR) of the free-wheeling diode can be found in the datasheet of a diode. The forward current should be equal or greater than the maximum current flowing through the load.

To get an efficient protection, the free-wheeling diode must be connected as close as possible to the inductive load!

Switching with inductive load
Fig. 1

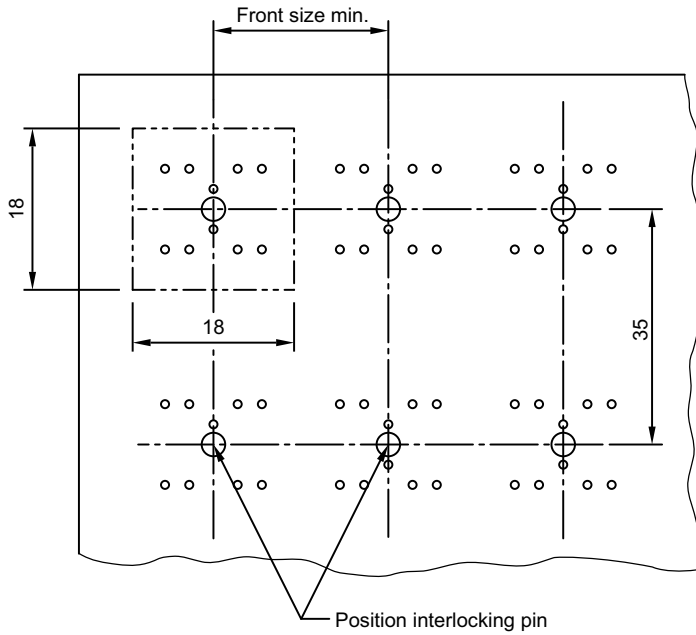


Counter emf
over load without free-wheeling diode
Fig. 2

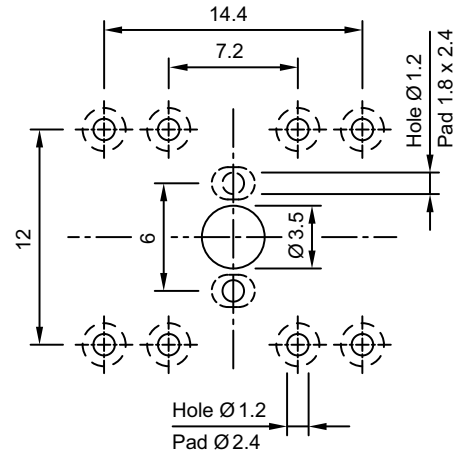


Component layout

1 Illumination element page 17 | Switching element for illuminated pushbutton | Mushroom-head pushbutton page 18 | Switching element for Keylock- and Selector switch 2 positions page 18 | Switching element for Keylock- and Selector switch 3 positions page 18



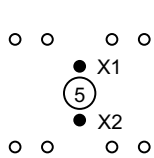
Drilling plan (Elementside)
Through-connection recommended



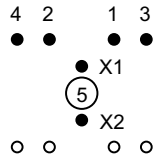
Note:

Pitch of the print circuit board hole Ø3.5 must agree with the mounting holes on the front plate

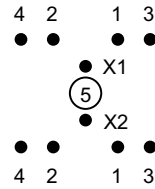
Layout



Illumination element
71-670.006



Switching element 1NC+1NO
71-671.026

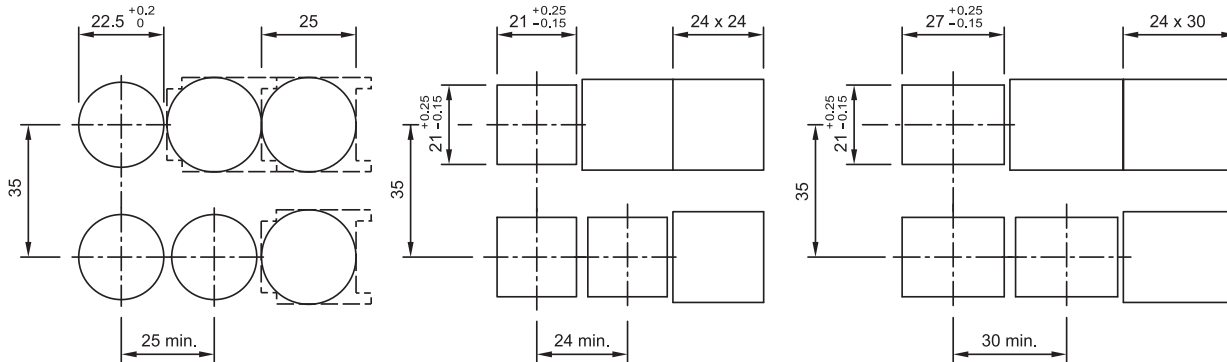


Switching element 2NC+2NO
71-672.026

- X1 Lamp cathode (-)
- X2 Lamp anode (+)
- 1-2 Contact normally closed
- 3-4 Contact normally open
- 5 Hole for interlocking pin

Mounting dimensions

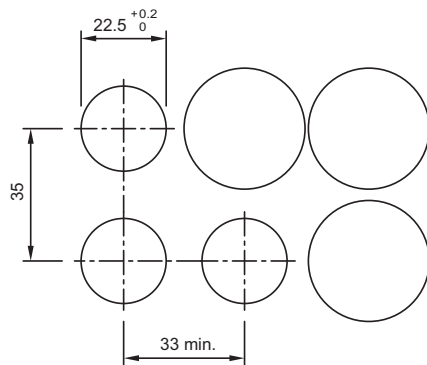
1 Indicator actuator, flush mounting page 8 | Illuminated pushbutton actuator, flush mounting page 8 | Keylock switch actuator 2 positions, flush mounting page 9 | Keylock switch actuator 3 positions, flush mounting page 10 | Selector switch actuator 2 positions, flush mounting page 10 | Selector switch actuator 3 positions, flush mounting page 11 | Front bezel set for Indicators and Illuminated pushbutton, flush mounting page 14 | Front bezel set for Keylock switch, flush mounting page 15 | Front bezel set for Selector switch, flush mounting page 16 | Protective cover, flush mounting page 16 | Blind plug, flush mounting page 17



NOTE

Pitch of the front plate mounting holes must agree with the printed circuit board holes 3.5 dia.

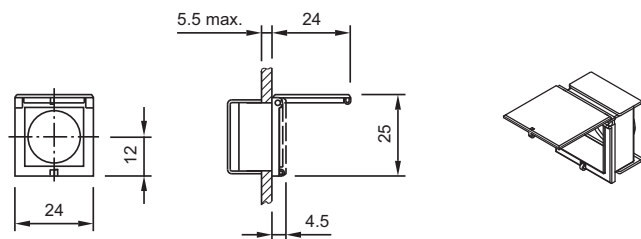
2 Mushroom-head pushbutton actuator, flush mounting page 9 | Front bezel set for Mushroom-head pushbutton, flush mounting page 15



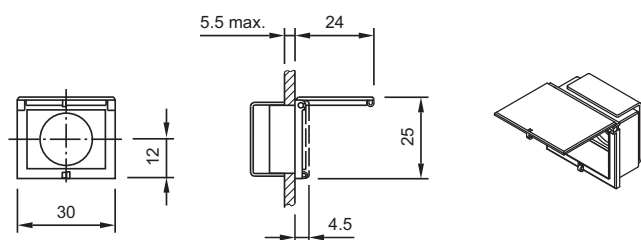
Hole spacing 41 mm min. by using front bezel set 61-9934.8

Technical drawing

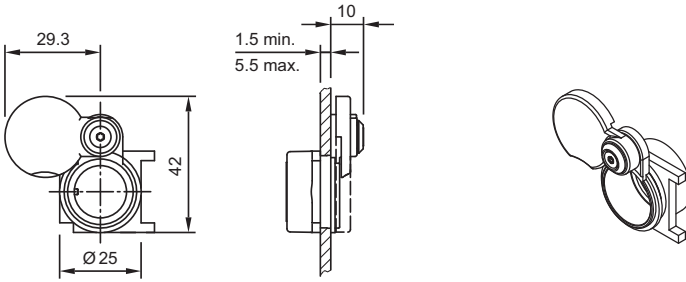
1 Protective cover, flush mounting page 16



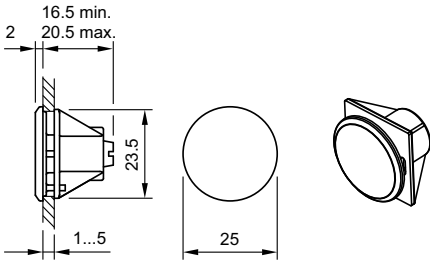
2 Protective cover, flush mounting page 16



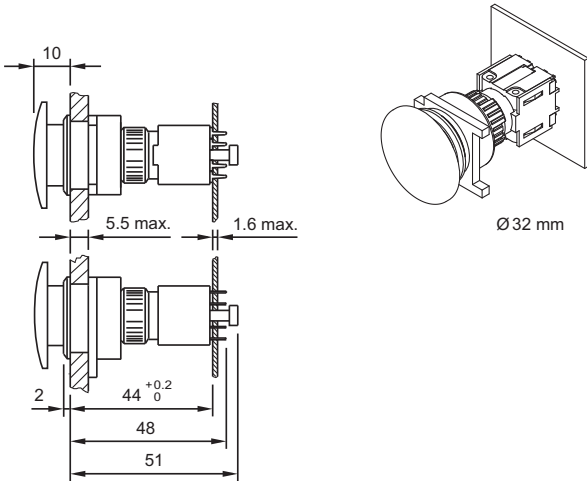
3 Protective cover, flush mounting page 16



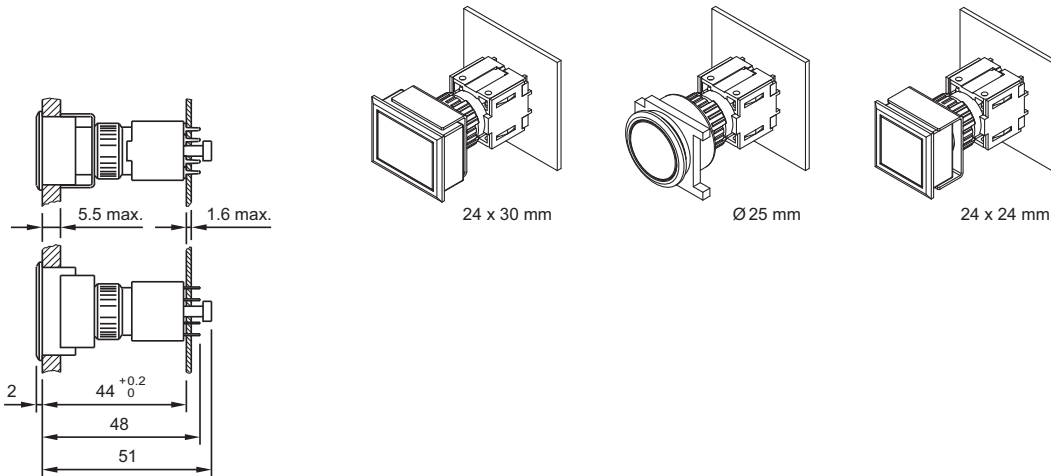
4 Blind plug, flush mounting page 17



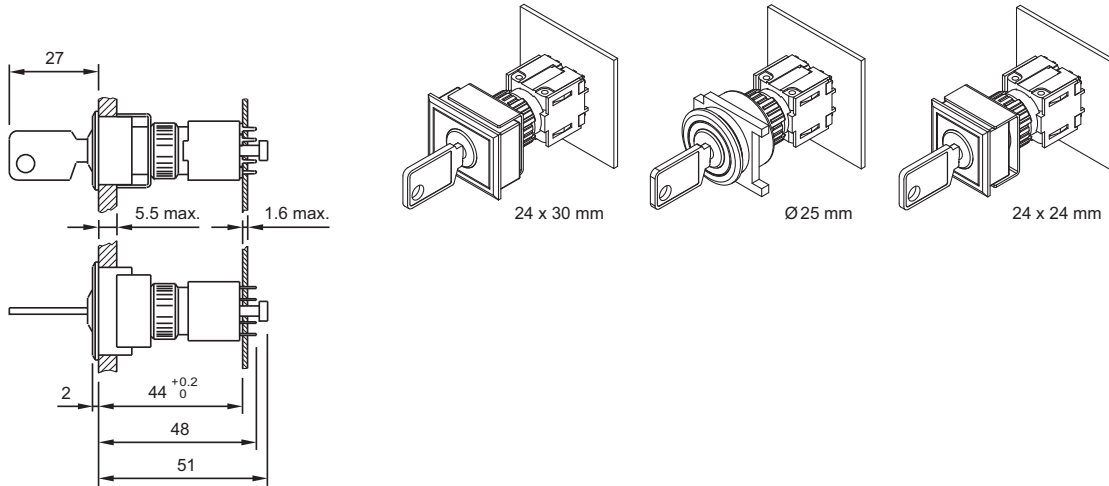
5 Mushroom-head pushbutton actuator, flush mounting page 9



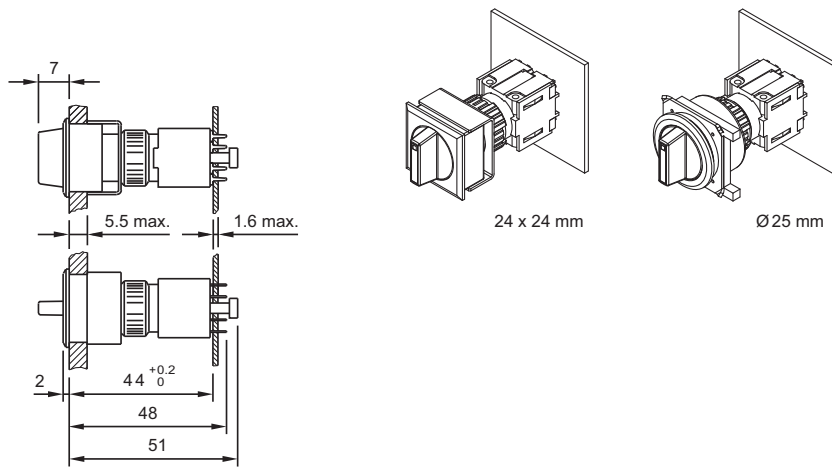
6 Indicator actuator, flush mounting page 8 | Illuminated pushbutton actuator, flush mounting page 8



7 Keylock switch actuator 2 positions, flush mounting page 9 | Keylock switch actuator 3 positions, flush mounting page 10



8 Selector switch actuator 2 positions, flush mounting page 10 | Selector switch actuator 3 positions, flush mounting page 11



Circuit drawing

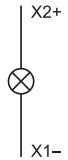
1 Mushroom-head pushbutton actuator, flush mounting page 9



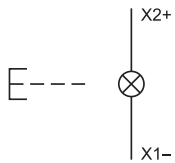
2 Mushroom-head pushbutton actuator, flush mounting page 9



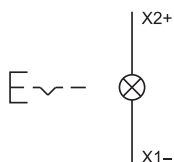
3 Indicator actuator, flush mounting page 8 | Illumination element page 17



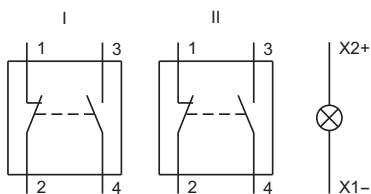
4 Illuminated pushbutton actuator, flush mounting page 8



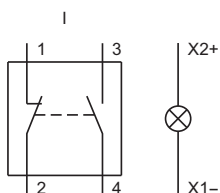
5 Illuminated pushbutton actuator, flush mounting page 8



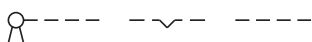
6 Switching element for Illuminated pushbutton | Mushroom-head pushbutton page 18 | **Switching element for Keylock- and Selector switch 3 positions** page 18



7 Switching element for Illuminated pushbutton | Mushroom-head pushbutton page 18 | **Switching element for Keylock- and Selector switch 2 positions** page 18



8 Keylock switch actuator 3 positions, flush mounting page 10



9 Keylock switch actuator 3 positions, flush mounting page 10



10 Keylock switch actuator 2 positions, flush mounting page 9



11 Keylock switch actuator 2 positions, flush mounting page 9



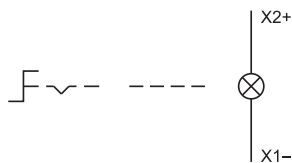
12 Keylock switch actuator 3 positions, flush mounting page 10



13 Keylock switch actuator 3 positions, flush mounting page 10



14 Selector switch actuator 2 positions, flush mounting page 10



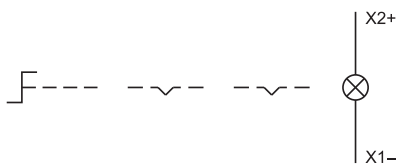
15 Selector switch actuator 2 positions, flush mounting page 10



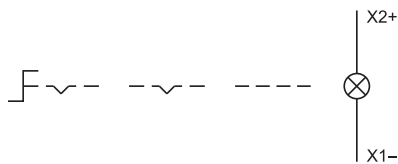
16 Selector switch actuator 3 positions, flush mounting page 11



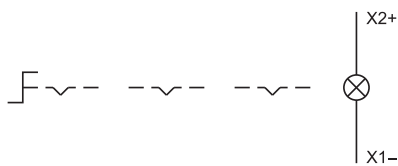
17 Selector switch actuator 3 positions, flush mounting page 11



18 Selector switch actuator 3 positions, flush mounting page 11



19 Selector switch actuator 3 positions, flush mounting page 11



Index from Typ-Nr.

| Typ-Nr. | Page | Typ-Nr. | Page | Typ-Nr. | Page |
|--------------|------|-------------|------|------------|------|
| 01-907 | 20 | 61-9593.4 | 13 | 61-9842.8 | 13 |
| 10-1306.1349 | 19 | 61-9593.5 | 13 | 61-9912.0 | 20 |
| 10-1307.1369 | 19 | 61-9642.1 | 12 | 61-9921.0 | 16 |
| 10-1309.1309 | 19 | 61-9642.2 | 12 | 61-9922.0 | 16 |
| 10-1310.1319 | 19 | 61-9642.3 | 12 | 61-9924.0 | 16 |
| 10-1311.1249 | 19 | 61-9642.4 | 12 | 61-9927.2 | 16 |
| 10-1312.1229 | 19 | 61-9642.5 | 12 | 61-9930.0 | 14 |
| 10-1313.1209 | 19 | 61-9642.6 | 12 | 61-9930.0 | 15 |
| 10-1313.1249 | 19 | 61-9642.7 | 12 | 61-9930.4 | 14 |
| 10-1316.1179 | 19 | 61-9643.201 | 12 | 61-9930.4 | 15 |
| 10-1316.1209 | 19 | 61-9643.202 | 12 | 61-9931.0 | 14 |
| 10-1319.1179 | 19 | 61-9643.203 | 12 | 61-9931.0 | 15 |
| 10-1319.1199 | 19 | 61-9643.301 | 12 | 61-9931.4 | 14 |
| 10-2J06.3142 | 19 | 61-9643.401 | 12 | 61-9931.4 | 15 |
| 10-2J06.3144 | 19 | 61-9643.501 | 12 | 61-9932.0 | 15 |
| 10-2J06.3145 | 19 | 61-9643.502 | 12 | 61-9932.0 | 16 |
| 10-2J06.3146 | 19 | 61-9643.503 | 12 | 61-9932.1 | 15 |
| 10-2J06.3149 | 19 | 61-9643.601 | 12 | 61-9932.1 | 16 |
| 10-2J09.1062 | 19 | 61-9643.602 | 12 | 61-9932.10 | 15 |
| 10-2J09.1064 | 19 | 61-9643.603 | 12 | 61-9932.10 | 16 |
| 10-2J09.1065 | 19 | 61-9643.701 | 12 | 61-9932.2 | 15 |
| 10-2J09.1066 | 19 | 61-9643.702 | 12 | 61-9932.2 | 16 |
| 10-2J09.1069 | 19 | 61-9643.703 | 12 | 61-9932.4 | 15 |
| 10-2J12.1062 | 19 | 61-9671.1 | 12 | 61-9932.4 | 16 |
| 10-2J12.1064 | 19 | 61-9671.2 | 12 | 61-9932.5 | 15 |
| 10-2J12.1065 | 19 | 61-9671.3 | 12 | 61-9932.5 | 16 |
| 10-2J12.1066 | 19 | 61-9671.4 | 12 | 61-9932.6 | 15 |
| 10-2J12.1069 | 19 | 61-9671.5 | 12 | 61-9932.6 | 16 |
| 10-2J13.1062 | 19 | 61-9671.6 | 12 | 61-9933.0 | 14 |
| 10-2J13.1064 | 19 | 61-9671.7 | 12 | 61-9933.0 | 15 |
| 10-2J13.1065 | 19 | 61-9681.1 | 12 | 61-9933.1 | 14 |
| 10-2J13.1066 | 19 | 61-9681.2 | 12 | 61-9933.1 | 15 |
| 10-2J13.1069 | 19 | 61-9681.3 | 12 | 61-9933.10 | 14 |
| 10-2J19.1042 | 19 | 61-9681.4 | 12 | 61-9933.10 | 15 |
| 10-2J19.1044 | 19 | 61-9681.5 | 12 | 61-9933.2 | 14 |
| 10-2J19.1045 | 19 | 61-9681.6 | 12 | 61-9933.2 | 15 |
| 10-2J19.1046 | 19 | 61-9681.7 | 12 | 61-9933.4 | 14 |
| 10-2J19.1049 | 19 | 61-9707.7 | 12 | 61-9933.4 | 15 |
| 31-985.0 | 17 | 61-9730.0 | 20 | 61-9933.5 | 14 |
| 31-989.300 | 17 | 61-9740.0 | 20 | 61-9933.5 | 15 |
| 31-989.311 | 17 | 61-9771.0 | 12 | 61-9933.6 | 14 |
| 61-9028.0 | 14 | 61-9771.8 | 12 | 61-9933.6 | 15 |
| 61-9028.20 | 14 | 61-9771.9 | 12 | 61-9934.8 | 15 |
| 61-9028.30 | 14 | 61-9781.0 | 12 | 61-9936.0 | 16 |
| 61-9028.40 | 14 | 61-9781.8 | 12 | 71-600.0 | 8 |
| 61-9028.50 | 14 | 61-9781.9 | 12 | 71-611.0 | 8 |
| 61-9028.60 | 14 | 61-9841.0 | 13 | 71-611.0 | 9 |
| 61-9028.9 | 14 | 61-9841.0A | 13 | 71-612.0 | 8 |
| 61-9029.20 | 14 | 61-9841.2 | 13 | 71-612.0 | 9 |
| 61-9029.30 | 14 | 61-9841.2A | 13 | 71-621.0/D | 9 |
| 61-9029.40 | 14 | 61-9841.4 | 13 | 71-622.0/D | 9 |
| 61-9029.50 | 14 | 61-9841.4A | 13 | 71-623.0/D | 9 |
| 61-9029.60 | 14 | 61-9841.5 | 13 | 71-624.0/D | 9 |
| 61-9029.8 | 14 | 61-9841.5A | 13 | 71-631.0/D | 10 |
| 61-9029.9 | 14 | 61-9841.6 | 13 | 71-632.0/D | 10 |
| 61-9210.0 | 13 | 61-9841.6A | 13 | 71-633.0/D | 10 |
| 61-9220.0 | 13 | 61-9841.8 | 13 | 71-634.0/D | 10 |
| 61-9230.0 | 13 | 61-9841.8A | 13 | 71-635.0/D | 10 |
| 61-9451.0 | 17 | 61-9842.0 | 13 | 71-636.0/D | 10 |
| 61-9452.0 | 17 | 61-9842.2 | 13 | 71-637.0/D | 10 |
| 61-9453.0 | 17 | 61-9842.4 | 13 | 71-638.0/D | 10 |
| 61-9593.0 | 13 | 61-9842.5 | 13 | 71-639.0/D | 10 |
| 61-9593.2 | 13 | 61-9842.6 | 13 | 71-641.0 | 10 |

Index from Typ-Nr.

| <u>Typ-Nr.</u> | <u>Page</u> | <u>Typ-Nr.</u> | <u>Page</u> | <u>Typ-Nr.</u> | <u>Page</u> |
|------------------|-------------|----------------|-------------|----------------|-------------|
| 71-642.0 | 10 | | | | |
| 71-651.0 | 11 | | | | |
| 71-652.0 | 11 | | | | |
| 71-656.0 | 11 | | | | |
| 71-658.0 | 11 | | | | |
| 71-670.006 | 17 | | | | |
| 71-671.026 | 18 | | | | |
| 71-671.026 | 18 | | | | |
| 71-672.026 | 18 | | | | |
| 71-672.026 | 18 | | | | |
| 71-679.0 | 18 | | | | |
| 84-9103.7 | 16 | | | | |

| | |
|----------------|---|
| | EAO AG |
| | Tannwaldstrasse 88 4601 Olten, Switzerland |
| E-mail | info@eao.com |
| Website | www.eao.com |
| | Austria |
| Phone | +49 201 85 87 0 |
| Fax | +49 201 85 87 210 |
| E-mail | sales.ede@eao.com |
| | Belgium |
| Phone | +32 3 777 82 36 |
| Fax | +32 3 777 84 19 |
| E-mail | sales.ebl@eao.com |
| | China |
| Phone | +852 27 86 91 41 |
| Fax | +852 27 86 95 61 |
| E-mail | sales.ehk@eao.com |
| | France |
| Phone | +33 1 64 43 37 37 |
| Fax | +33 1 64 43 37 49 |
| E-mail | sales.esa@eao.com |
| | Germany |
| Phone | +49 201 85 87 0 |
| Fax | +49 201 85 87 210 |
| E-mail | sales.ede@eao.com |
| | Italy |
| Phone | +39 035 481 0189 |
| Fax | +39 035 481 3786 |
| E-mail | sales.eit@eao.com |
| | Japan |
| Phone | +81 3 5444 5411 |
| Fax | +81 3 5444 0345 |
| E-mail | sales.esj@eao.com |
| | Netherlands |
| Phone | +31 78 653 17 00 |
| Fax | +31 78 653 17 99 |
| E-mail | sales.enl@eao.com |
| | Sweden |
| Phone | +46 8 683 86 60 |
| Fax | +46 8 724 29 12 |
| E-mail | sales.esw@eao.com |
| | Switzerland |
| Phone | +41 62 388 95 00 |
| Fax | +41 62 388 95 55 |
| E-mail | sales.ech@eao.com |
| | United Kingdom |
| Phone | +44 1444 236 000 |
| Fax | +44 1444 236 641 |
| E-mail | sales.euk@eao.com |
| | USA |
| Phone | +1 203 877 4577 |
| Fax | +1 203 877 3694 |
| E-mail | sales.eus@eao.com |
| | Other Countries |
| Phone | +41 62 286 92 10 |
| Fax | +41 62 296 21 62 |
| E-mail | info@eao.com |



Компания «ЭлектроПласт» предлагает заключение долгосрочных отношений при поставках импортных электронных компонентов на взаимовыгодных условиях!

Наши преимущества:

- Оперативные поставки широкого спектра электронных компонентов отечественного и импортного производства напрямую от производителей и с крупнейших мировых складов;
- Поставка более 17-ти миллионов наименований электронных компонентов;
- Поставка сложных, дефицитных, либо снятых с производства позиций;
- Оперативные сроки поставки под заказ (от 5 рабочих дней);
- Экспресс доставка в любую точку России;
- Техническая поддержка проекта, помощь в подборе аналогов, поставка прототипов;
- Система менеджмента качества сертифицирована по Международному стандарту ISO 9001;
- Лицензия ФСБ на осуществление работ с использованием сведений, составляющих государственную тайну;
- Поставка специализированных компонентов (Xilinx, Altera, Analog Devices, Intersil, Interpoint, Microsemi, Aeroflex, Peregrine, Syfer, Eurofarad, Texas Instrument, Miteq, Cobham, E2V, MA-COM, Hittite, Mini-Circuits, General Dynamics и др.);

Помимо этого, одним из направлений компании «ЭлектроПласт» является направление «Источники питания». Мы предлагаем Вам помощь Конструкторского отдела:

- Подбор оптимального решения, техническое обоснование при выборе компонента;
- Подбор аналогов;
- Консультации по применению компонента;
- Поставка образцов и прототипов;
- Техническая поддержка проекта;
- Защита от снятия компонента с производства.



Как с нами связаться

Телефон: 8 (812) 309 58 32 (многоканальный)

Факс: 8 (812) 320-02-42

Электронная почта: org@eplast1.ru

Адрес: 198099, г. Санкт-Петербург, ул. Калинина, дом 2, корпус 4, литера А.