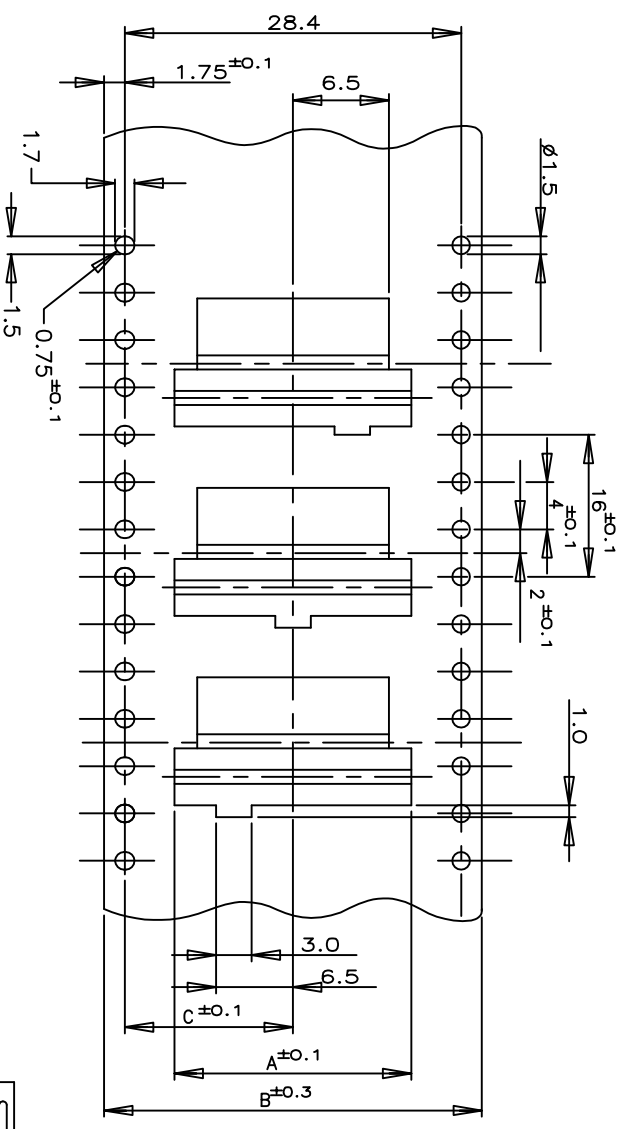
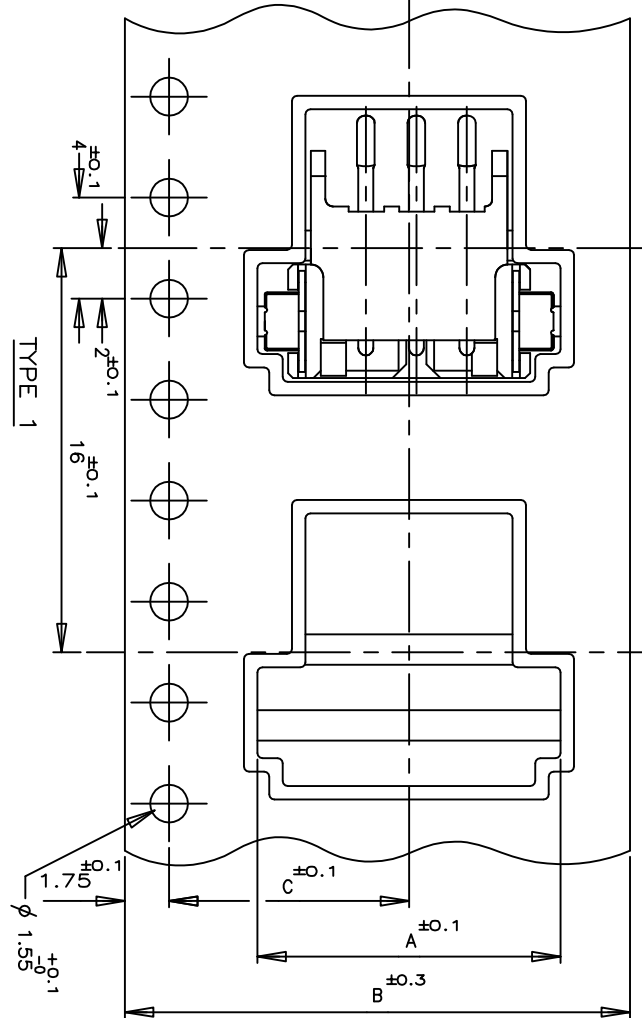
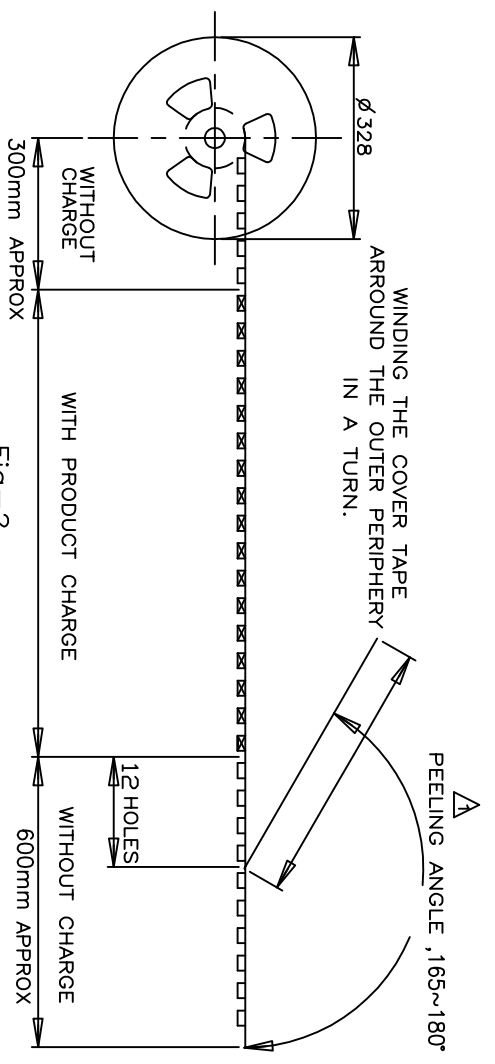
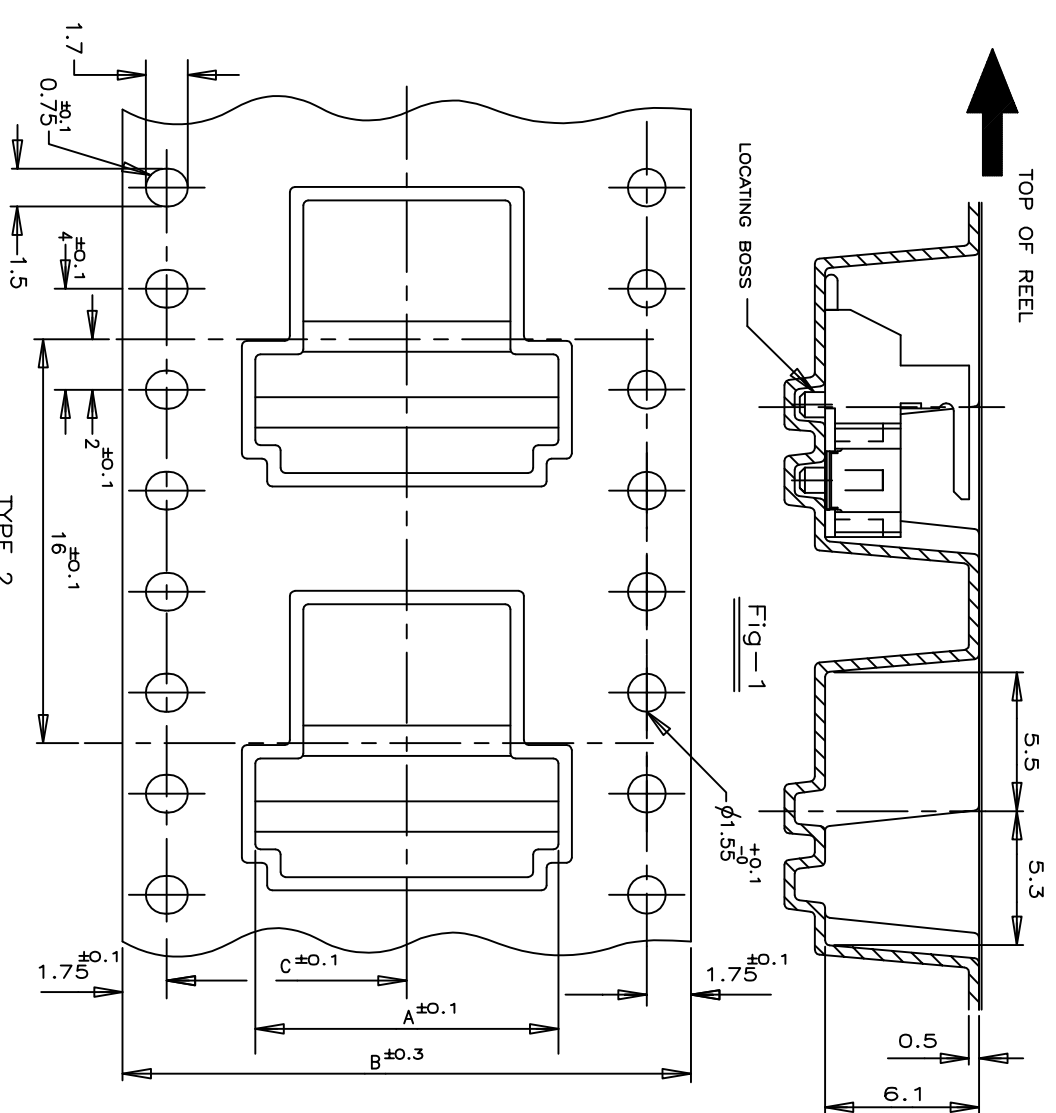
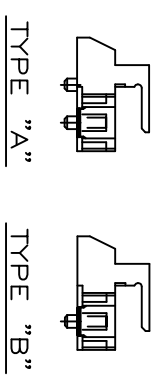


© COPYRIGHT - By -

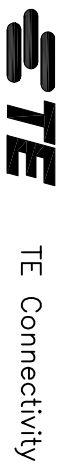
Loc	DIST	REVISIONS		DATE	DWN	APVD
ES	00	P	DESCRIPTION	24OCT11	C.Z	S.Y
		LTR				
		C3	REVISED ECR-11-021545			



TYPE 3 FOR 7P ONLY
THREE KINDS OF DIFFERENT POCKETS AS 1 SET
USED FOR 7P ONLY



COLOR	BLACK		NATURAL				
	WITH	WITHOUT	WITH	WITHOUT			
TYPE 2	B	20.2	44	24	500	9	1-292173-9
TYPE 3	B	20.2	44	22	8	1-8	
TYPE 2	B	14.2	32	20	7	1-7	
TYPE 2	B	14.2	32	18	6	1-6	
TYPE 3	B	11.5	24	16	5	1-5	
TYPE 1	B	14	14	14	4	1-4	
TYPE 1	A	12	12	3	1-3	-3	
TYPE 2	A	11.5	24	10	2	1-2	
TYPE 2	B	20.2	44	24	9	0-9	
TYPE 2	B	20.2	44	22	8	0-8	
TYPE 3	B	14.2	32	20	7	0-7	
TYPE 2	B	14.2	32	18	6	0-6	
TYPE 2	B	11.5	24	16	5	0-5	
TYPE 1	B	14	14	4	0-4	-4	
TYPE 1	A	12	12	3	0-3	-3	



TE Connectivity

ON TAPING (EMBOSS)
TE CT CONNECTOR POST HEADER ASS'Y
(BOX-H SMT TYPE W/BOSS & TAIL)

THIS DRAWING IS A CONTROLLED DOCUMENT.	
DWN	21SEP10
JACK HOU	21SEP10
CHK	MARTIN LI
APVD	STEVEN YAO
PRODUCT SPEC	21SEP10
APPLICATION SPEC	
WEIGHT	
CUSTOMER DRAWING	

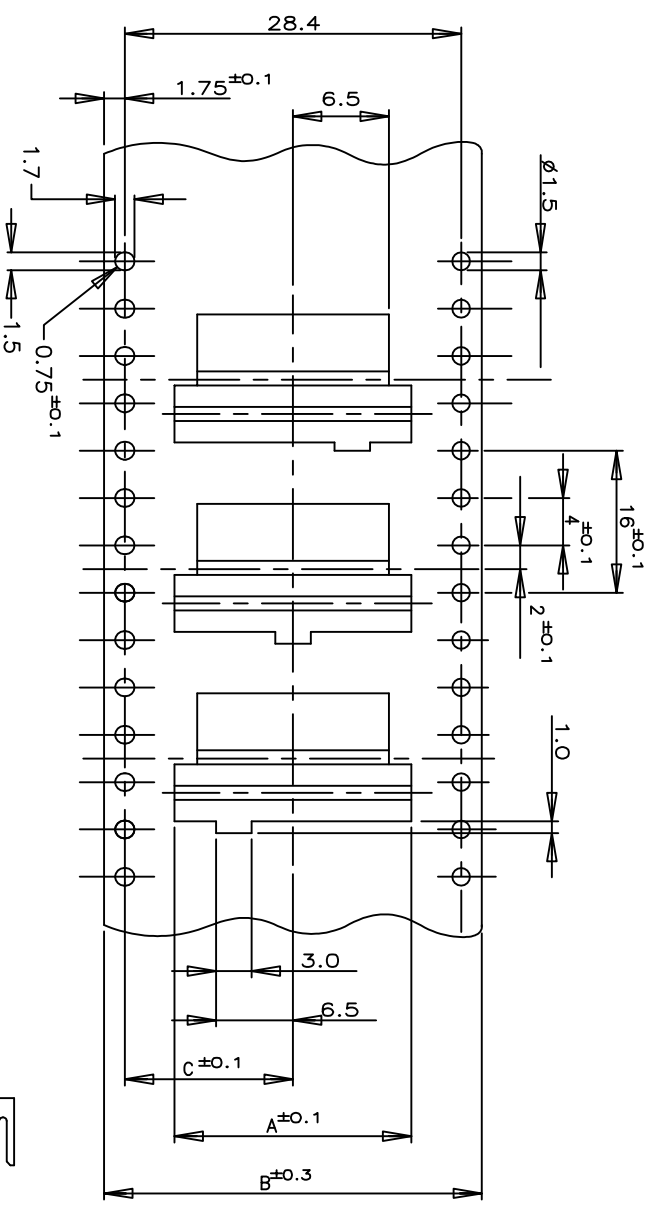
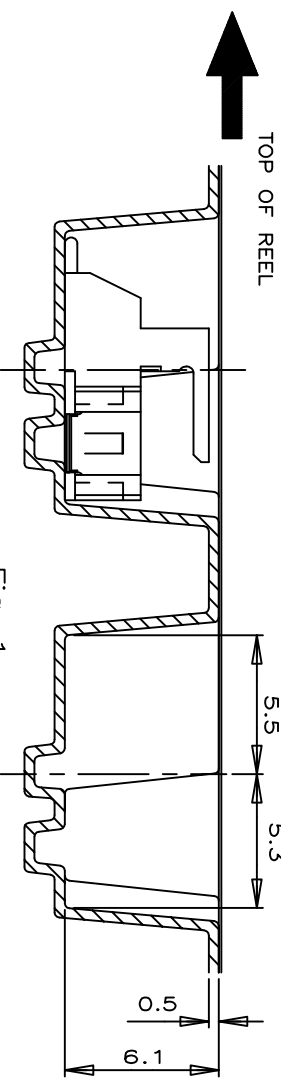
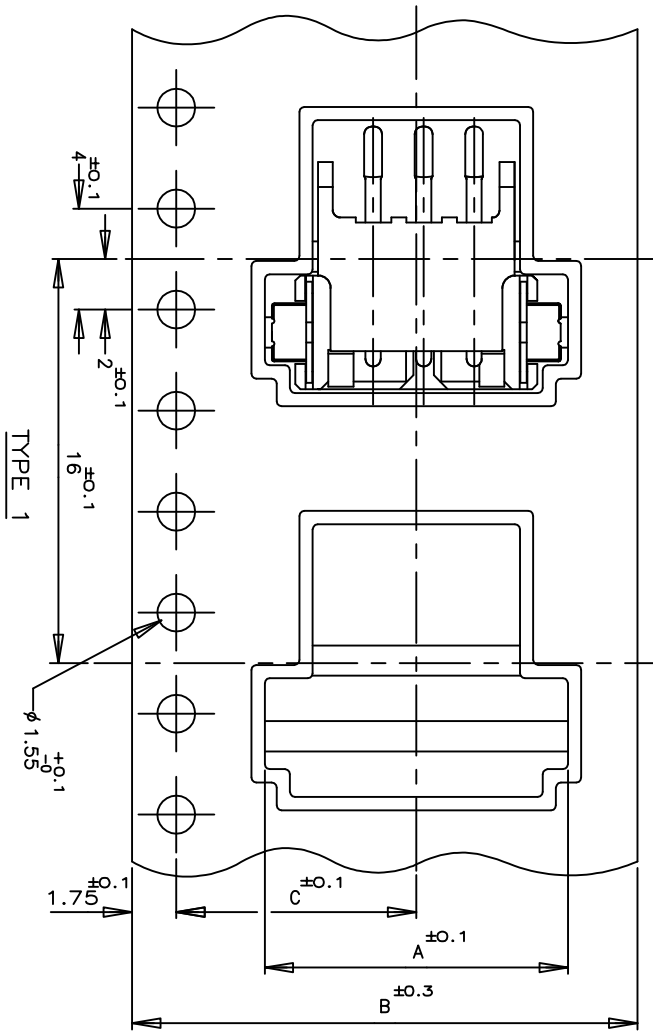
APVD	STEVEN YAO	NAME	
PRODUCT SPEC		SIZE	A3
APPLICATION SPEC		CAGE CODE	00779
WEIGHT		DRAWING NO	292173
CUSTOMER DRAWING		SCALE	1/1
		SHEET	1 OF 6
		REV	C3

TOLERANCE UNLESS OTHERWISE SPECIFIED:	
10>*	±0.2
30>~*10	±0.25
100>~*30	±0.3
ANGLE	±3°

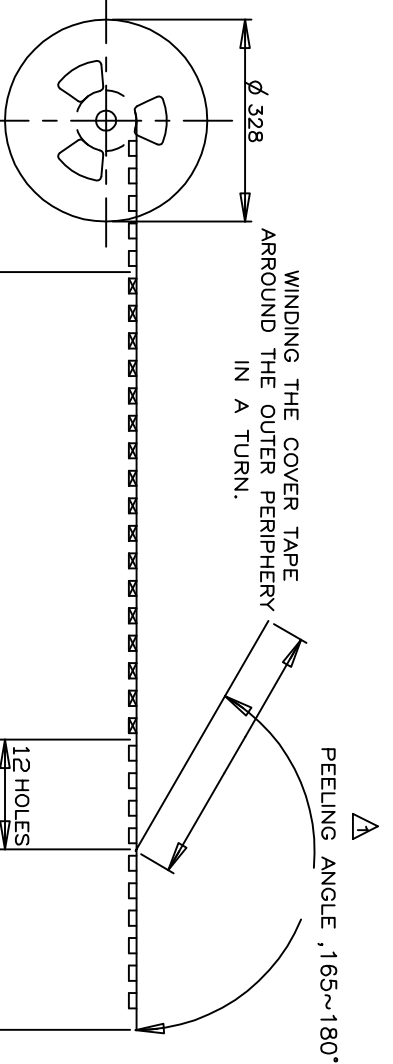
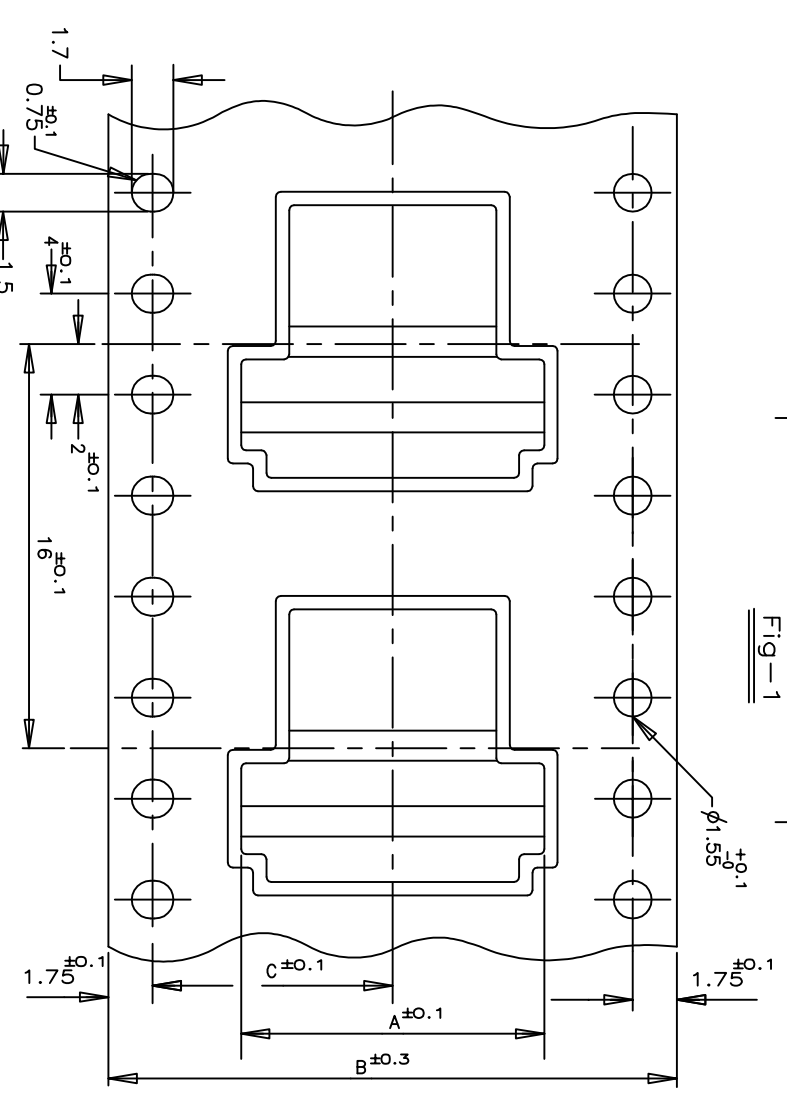
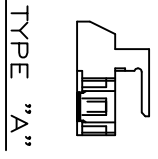
NOTES:
▲ PEELING RESISTANCE : 0.196N-0.686N (20gf-70gf)
SPEED : 300mm/min

Loc	DIST	P	LTR	DESCRIPTION	DATE	DWN	APVD
ES	00	-	-	SEE SHEET 1	-	-	-

(AS SHOWN : 3P)



TYPE 3 FOR 7P ONLY
THREE KINDS OF DIFFERENT POCKETS AS 1 SET
USED FOR 7P ONLY



COLOR	WITH	TAPING TYPE	TYPE 1		TYPE 2		TYPE 3		QTY/REEL	Pos	TAPING P/N
			A	B	A	B	A	B			
BLACK	TYPE 2	A	20.2	44	24	500	9	3-292173-9			
	TYPE 3	A	20.2	44	22	8	3-	-8			
	TYPE 2	A	14.2	32	18	6	3-	-6			
	TYPE 1	A	11.5	24	16	5	3-	-5			
	TYPE 1	A	11.5	24	14	4	3-	-4			
	TYPE 2	A	11.5	24	10	2	3-	-2			
	TYPE 2	A	20.2	44	24	9	2-	-9			
	TYPE 2	A	20.2	44	22	8	2-	-8			
	TYPE 3	A	14.2	32	20	7	2-	-7			
NATURAL	TYPE 2	A	14.2	32	18	6	2-	-6			
	TYPE 2	A	11.5	24	16	5	2-	-5			
	TYPE 2	A	11.5	24	14	4	2-	-4			
	TYPE 1	A	11.5	24	12	3	3-	-3			
	TYPE 2	A	11.5	24	10	2	3-	-2			
	TYPE 2	A	20.2	44	24	9	2-	-9			

TOLERANCE UNLESS OTHERWISE SPECIFIED:
10>* :±0.2
30>* :±0.25
100>* :±0.3
ANGLE :±3°

NOTES:
△ PEELING RESISTANCE : 0.196N-0.686N (20gf-70gf)
SPEED : 300mm/min

1470-19 (3/11)

STE TE Connectivity

ON TAPING (EMBOSS)

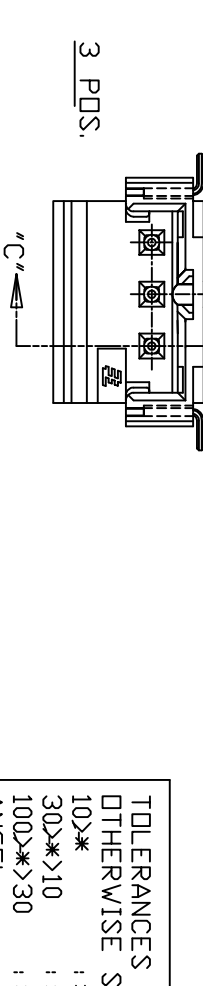
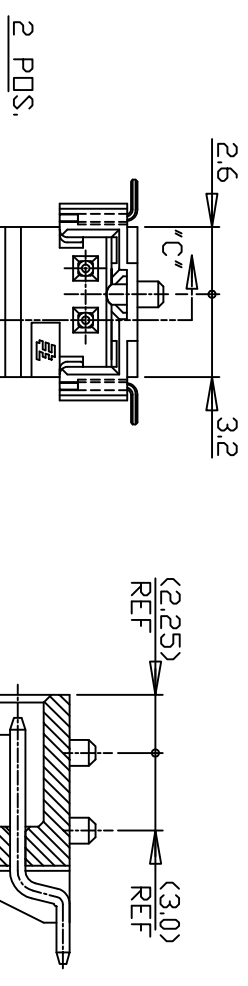
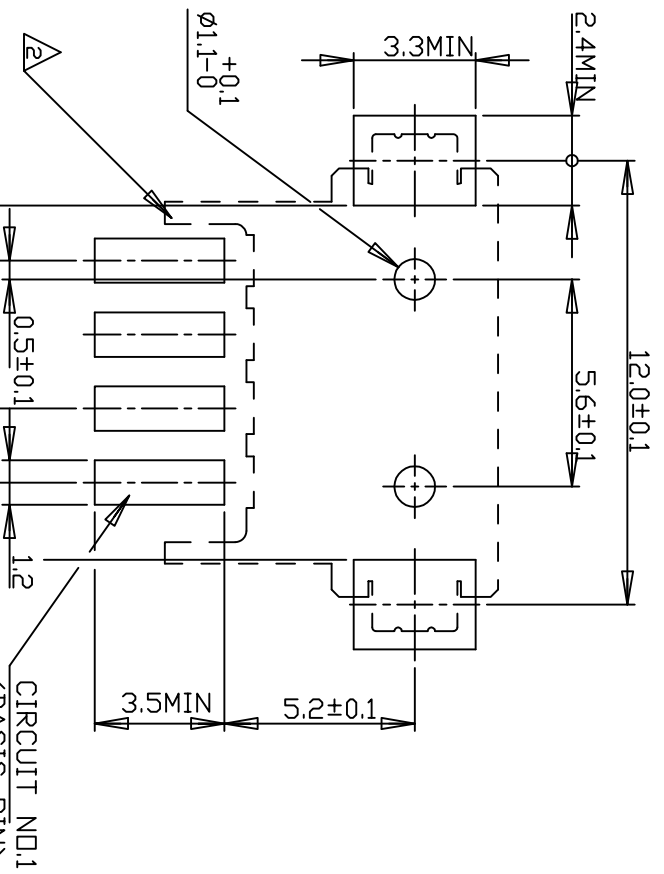
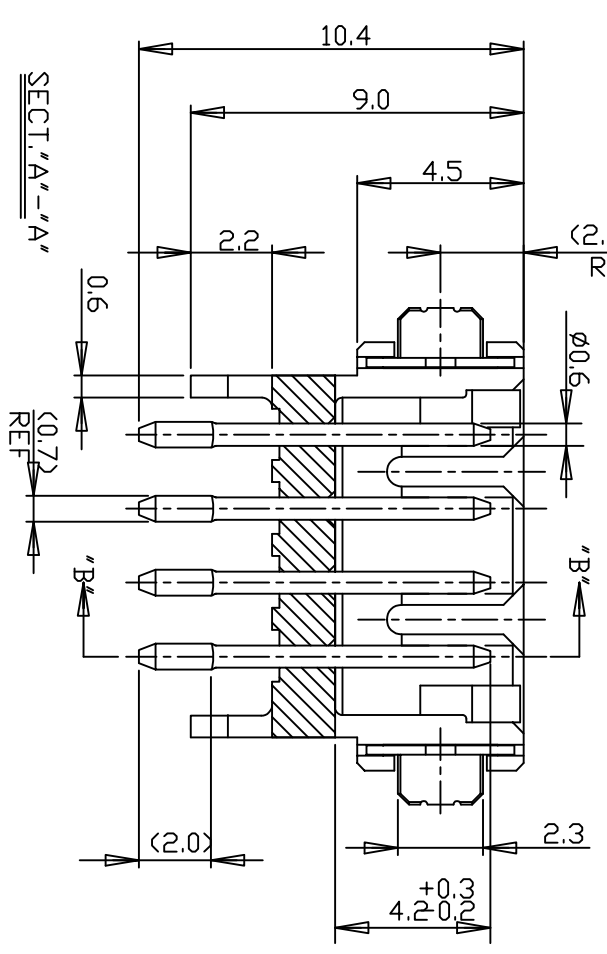
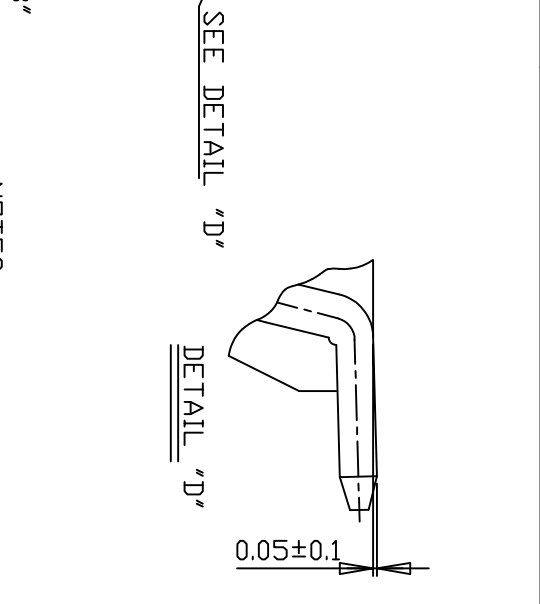
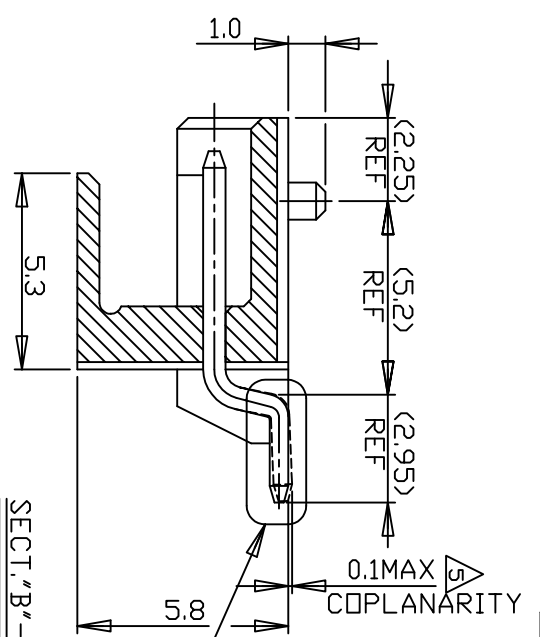
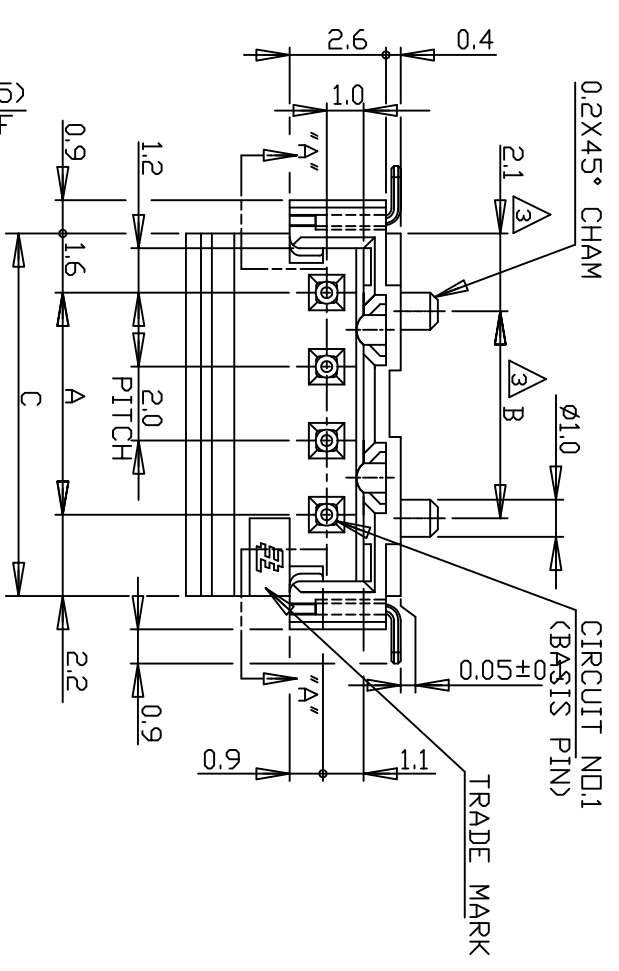
TE CT CONNECTOR POST HEADER ASS'Y
(BOX-H SMT TYPE W/O BOSS & W/ TAIL)

APVD	NAME	SIZE	DRAWING NO	RESTRICTED TO
	TE CT CONNECTOR POST HEADER ASS'Y (BOX-H SMT TYPE W/O BOSS & W/ TAIL)	A3	00779	
CHK	PRODUCT SPEC	SCALE	SHEET	REV
	APPLICATION SPEC	2	6	3
MATERIAL	WEIGHT	CUSTOMER DRAWING		

THIS DRAWING IS A CONTROLLED DOCUMENT.

DIMENSIONS:	TOLERANCES UNLESS OTHERWISE SPECIFIED:
MM	0 PLC ±
	1 PLC ±
	2 PLC ±
	3 PLC ±
	4 PLC ±
	FINISH ±

DWN	APVD	NAME	SIZE	DRAWING NO	RESTRICTED TO
		ON TAPING (EMBOSS)	A3	00779	
CHK	PRODUCT SPEC	SCALE	SHEET	REV	
	APPLICATION SPEC	2	6	3	
MATERIAL	WEIGHT	CUSTOMER DRAWING			



- NOTES:
1. MATERIAL: HSG-6T PKG.F.30%XUL94V-0) COLOR: BLACK, NATURAL POST: TIN BRASS TAIL: TIN BRASS 4P&ABOVE POS. 2P&3P
 2. OCCUPANT AREA ON PC BOARD
 3. TO BE MEASURED WITH CONNECTOR PLACED ON HORIZONTAL DATUM SURFACE, FLAT OF SOLDER TINE AND TAIL FROM DATUM SURFACE IS 0.1mm MAX

16.0	15.6	19.8	22.0	9	1-292173-9	292173-9
14.0	13.6	17.8	20.0	8	1-8	-8
12.0	11.6	15.8	18.0	7	1-7	-7
10.0	9.6	13.8	16.0	6	1-6	-6
8.0	7.6	11.8	14.0	5	1-5	-5
6.0	5.6	9.8	11.8	4	1-4	-4
4.0	4.0	7.8	9.8	3	1-3	-3
2.0	2.0	5.8	7.8	2	1-292173-2	292173-2
A	B	C	D	POS.	NATURAL	BLACK

TOLERANCES UNLESS OTHERWISE SPECIFIED:

- 10> * : ±0.2
- 30> * > 10 : ±0.25
- 100> * > 30 : ±0.3
- ANGEL : ±3°

NO ACCUMULATED TOLERANCE RECOMMENDED P.C.B. BOARD LAYOUT (P.C.B. THK: 0.8mm MIN)

THIS DRAWING IS A CONTROLLED DOCUMENT.

DMN	
CHK	
APVD	

STE TE Connectivity

PRODUCT SPEC: 108-60016

APPLICATION SPEC

NAME: SMT TYPE POST HDR ASSY (H) WITH BOSS & TAIL TYPE (TE CT CONN. 2mm PITCH)

SIZE: A3

CAGE CODE: 00779

DRAWING NO: 292173

RESTRICTED TO

MATERIAL: SEE NOTE

FINISH: SEE NOTE

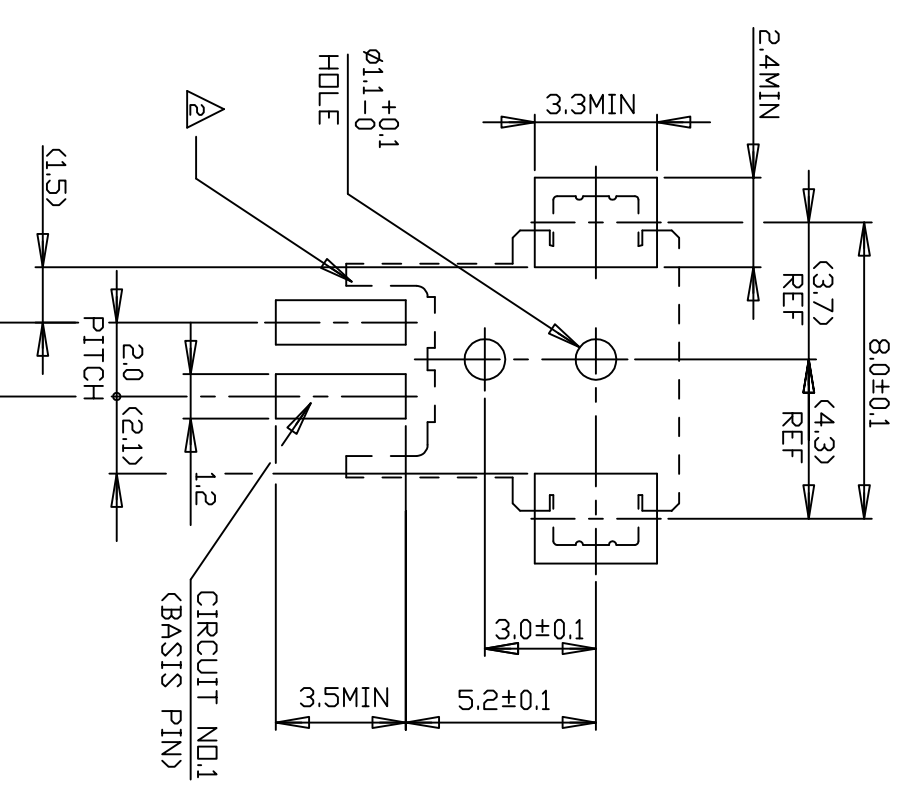
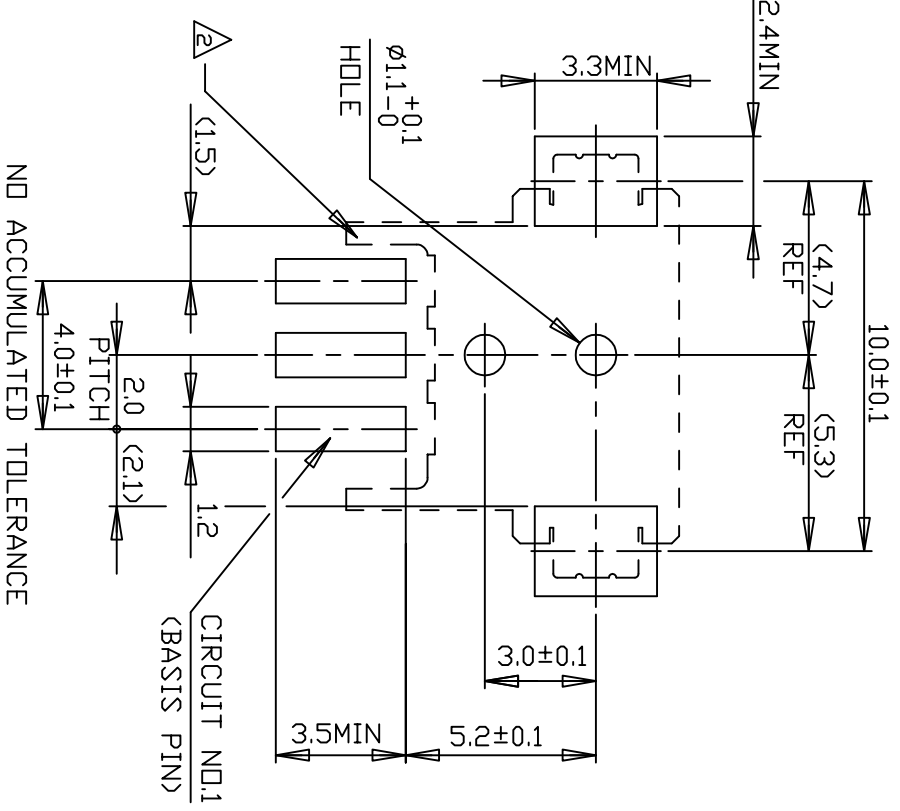
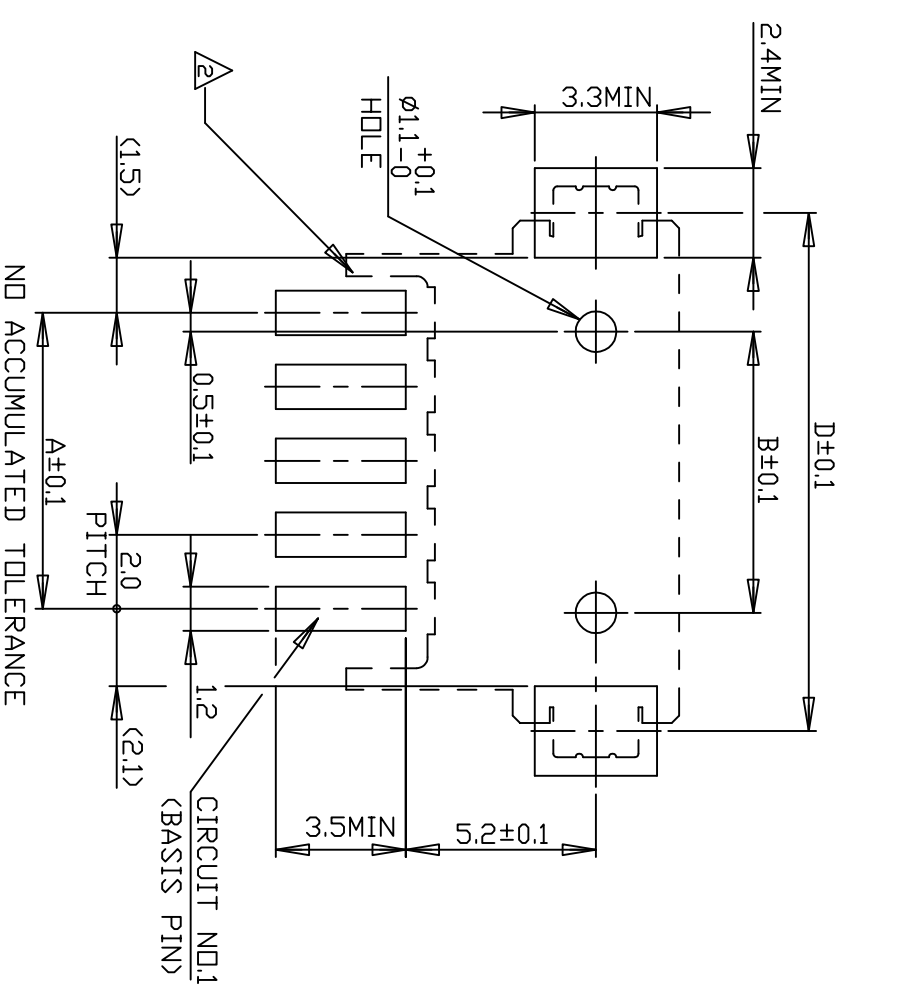
WEIGHT: CUSTOMER DRAWING

SCALE: 5:1

SHEET: 3 OF 6

REV: C3

LAYOUT FOR 292173-X,1-292173-X



5 POS. & ABOVE POS.

3 POS.

2 POS.

RECOMMENDED P.C. BOARD LAYOUT
 (P.C.B THK:0.8mm MIN)

THIS DRAWING IS A CONTROLLED DOCUMENT.



TE Connectivity

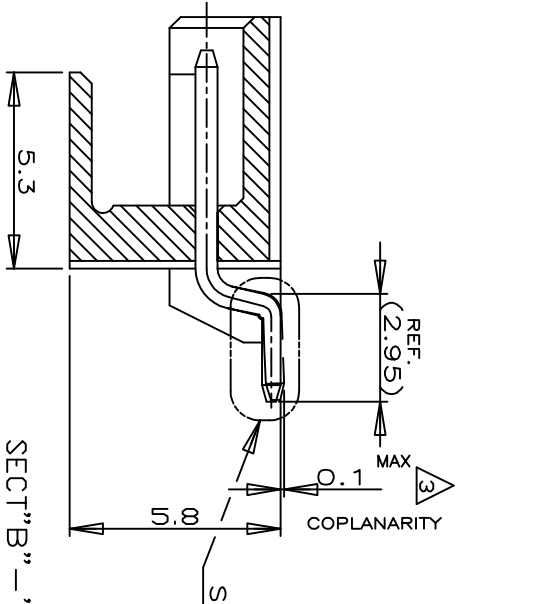
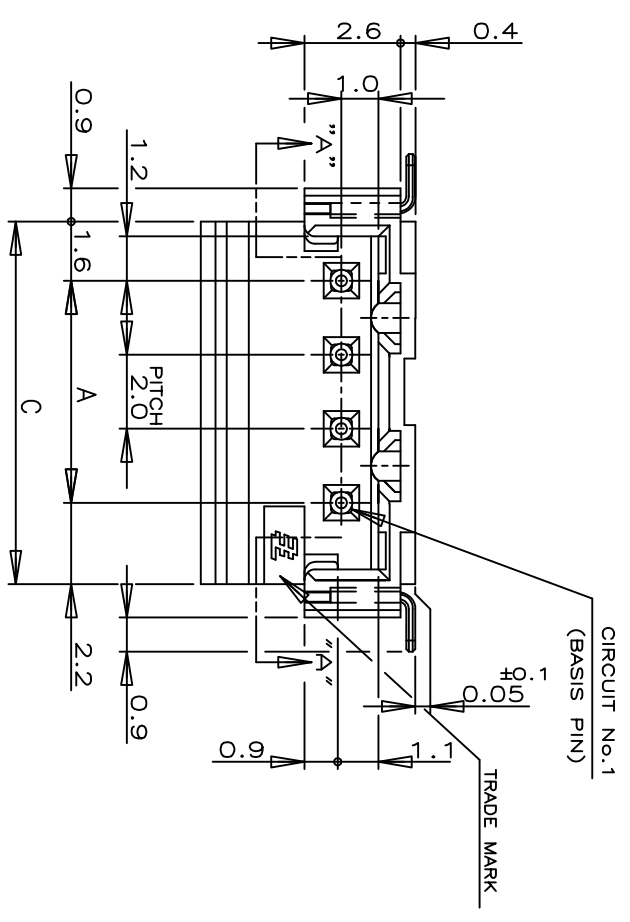
SMT TYPE POST HDR ASS'Y (H)
 WITH BOSS & TAIL TYPE
 (TE CT CONN. 2mm PITCH)

DIMENSIONS:		TOLERANCES UNLESS OTHERWISE SPECIFIED:		NAME	
MM		0 PLC	±	APVD	-
		1 PLC	±	PRODUCT SPEC	-
		2 PLC	±	APPLICATION SPEC	-
		3 PLC	±	WEIGHT	-
		4. P.C. ANGLES	±	CUSTOMER DRAWING	-
			±	SIZE	A3
			±	CAGE CODE	00779
			±	DRAWING NO	292173
			±	SCALE	5:1
			±	SHEET	4 OF 6
			±	REV	C3

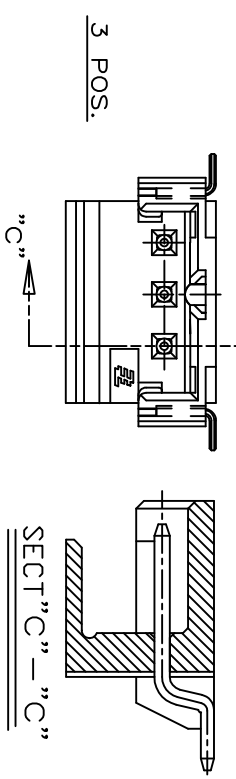
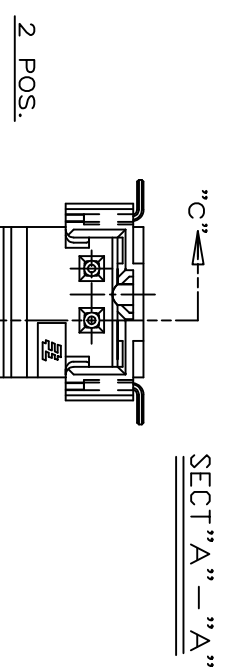
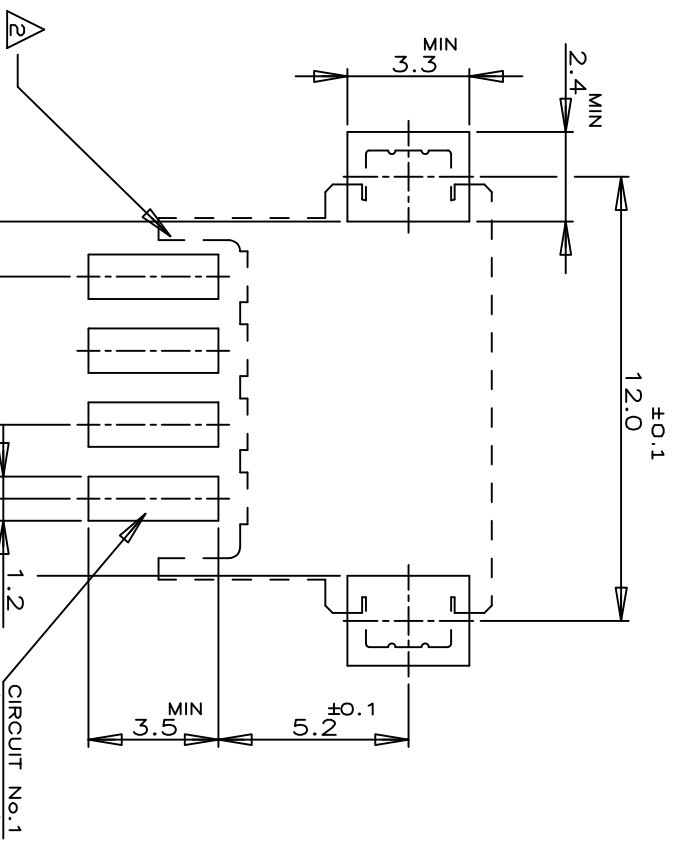
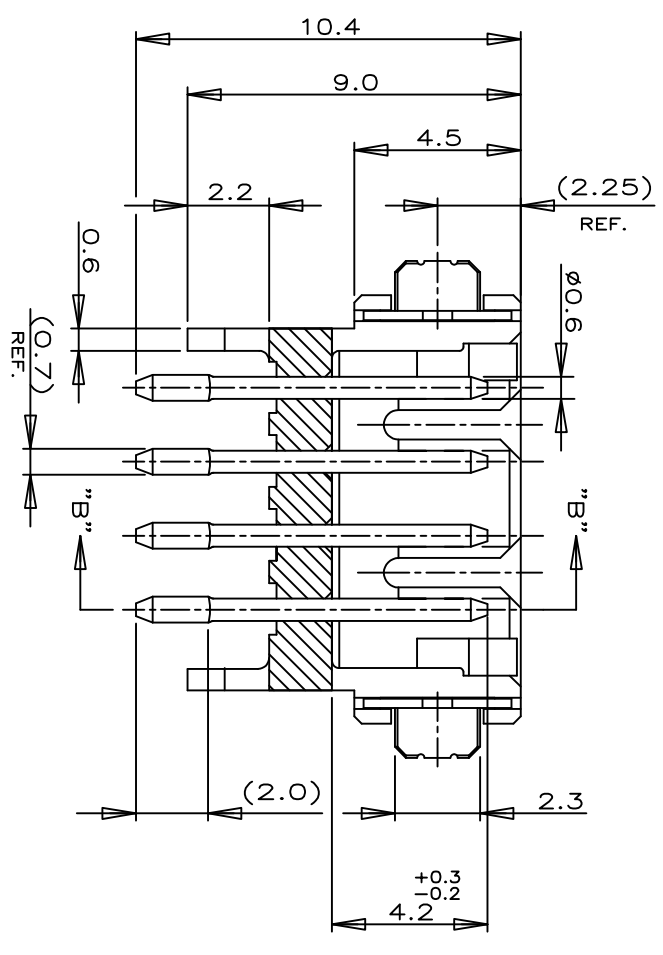
Loc	E S	DIST	00
P	LTR		
	SEE SHEET 1		

REV	DESCRIPTION	DATE	DWN	APVD

(AS SHOWN : 4P)



DETAIL "D"
 SCALE 10-1
 SEE DETAIL "D"



TOLERANCES UNLESS OTHERWISE SPECIFIED:
 10)* ±0.2
 30)* ±0.10
 100)* ±0.3
 ANGEL ±3°

RECOMMENDED P.C.BOARD LAYOUT
 (P.C.B THK:0.8mm MIN)
 NO ACCUMULATED TOLERANCE

NOTES:
 1. MATERIAL : HSG-6T PA(G.F.30%)(UL94V-0)
 COLOR:BLACK,NATURAL
 POST:TIN BRASS
 TAIL: TIN BRASS

2 OCCUPANT AREA ON PC BOARD
 TO BE MEASURED WITH CONNECTOR PLACED ON HORIZONTAL DATUM SURFACE,FLOAT OF SOLDER TINE AND TAIL FROM DATUM SURFACE IS 0.1mm MAX

SIZE	16.0	19.8	22.0	9	3-292173-9	2-292173-9
A	14.0	17.8	20.0	8	3- -8	2- -8
B	12.0	15.8	18.0	7	3- -7	2- -7
C	10.0	13.8	16.0	6	3- -6	2- -6
D	8.0	11.8	14.0	5	3- -5	2- -5
	6.0	9.8	-	4	3- -4	2- -4
	4.0	7.8	-	3	3- -3	2- -3
	2.0	5.8	-	2	3-292173-2	2-292173-2

STE

TE Connectivity

SMT TYPE POST HDR ASS'Y (BOX-H)
 W/O BOSS, WITH TAIL TYPE
 (TE CT CONN. 2mm PITCH)

THIS DRAWING IS A CONTROLLED DOCUMENT.

DIMENSIONS: MM	TOLERANCES UNLESS OTHERWISE SPECIFIED:	0 PLC	±
		1 PLC	±
		2 PLC	±
		3 PLC	±
		4 PLC	±
MATERIAL	SEE NOTE	FINISH	±

APVD
 PRODUCT SPEC 108-60016
 APPLICATION SPEC
 WEIGHT
 CUSTOMER DRAWING

NAME
 SIZE A3
 CAGE CODE 00779
 DRAWING NO C-292173
 RESTRICTED TO

DWN
 CHK
 APVD

Loc	DIST	P	LTR	DESCRIPTION	DATE	DWN	APVD
ES	00	-	-	SEE SHEET 1	-	-	-

REVISIONS

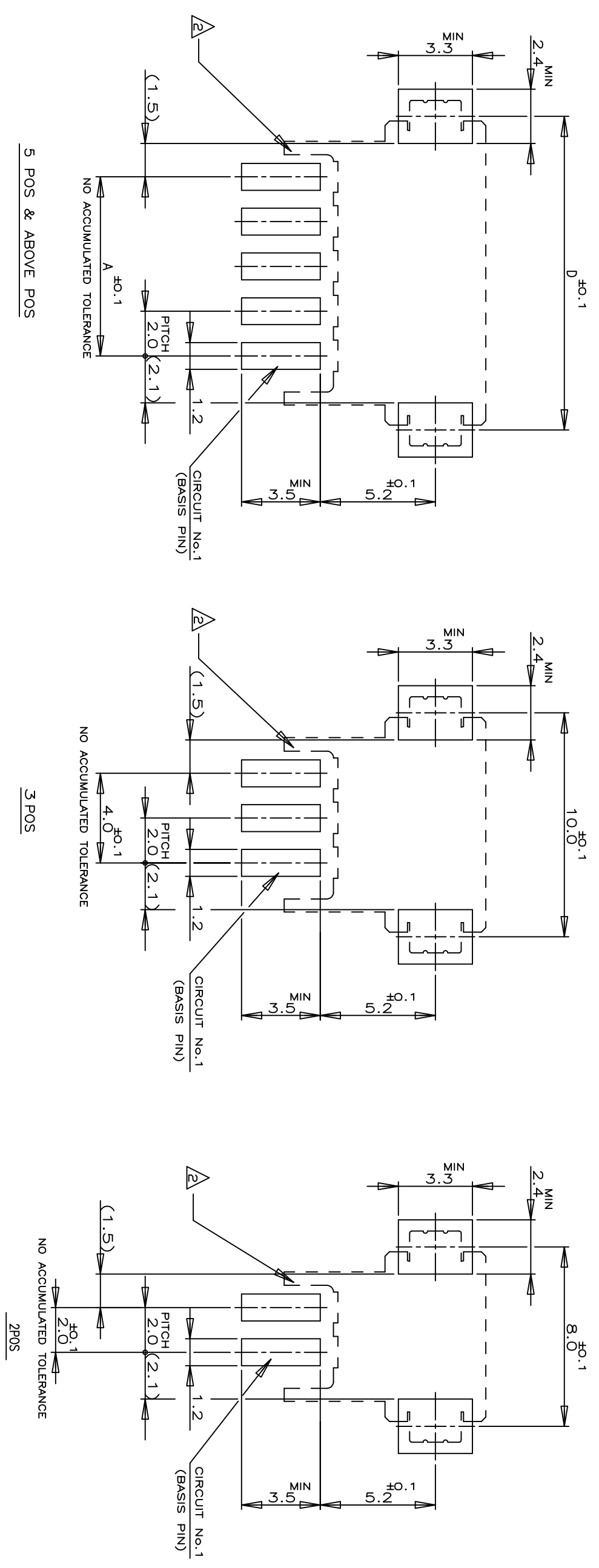
1

2

3

4

1



RECOMMENDED P.C.BOARD LAYOUT
(P.C.B THK:0.8mm MIN)

THIS DRAWING IS A CONTROLLED DOCUMENT.		DWN		NAME	
DIMENSIONS: MM		CHK		SMT TYPE POST HDR ASS'Y (H) W/O, WITH TAIL TYPE (TE CT CONN. 2mm PITCH)	
TOLERANCES UNLESS OTHERWISE SPECIFIED:		APVD		SIZE	
0 PLC	±	-		A3	
1 PLC	±	-		CAGE CODE	
2 PLC	±	-		00779	
3 PLC	±	-		DRAWING NO	
4 P.C.B ANGLES	±	-		G=292173	
FINISH	±	-		SCALE	
		-		5:1	
MATERIAL		-		SHEET	
		-		6 OF 6	
		-		REV	
		-		C3	
		-		RESTRICTED TO	
		-		CUSTOMER DRAWING	



TE Connectivity

A

B

C

D

A

B

C

D



Компания «ЭлектроПласт» предлагает заключение долгосрочных отношений при поставках импортных электронных компонентов на взаимовыгодных условиях!

Наши преимущества:

- Оперативные поставки широкого спектра электронных компонентов отечественного и импортного производства напрямую от производителей и с крупнейших мировых складов;
- Поставка более 17-ти миллионов наименований электронных компонентов;
- Поставка сложных, дефицитных, либо снятых с производства позиций;
- Оперативные сроки поставки под заказ (от 5 рабочих дней);
- Экспресс доставка в любую точку России;
- Техническая поддержка проекта, помощь в подборе аналогов, поставка прототипов;
- Система менеджмента качества сертифицирована по Международному стандарту ISO 9001;
- Лицензия ФСБ на осуществление работ с использованием сведений, составляющих государственную тайну;
- Поставка специализированных компонентов (Xilinx, Altera, Analog Devices, Intersil, Interpoint, Microsemi, Aeroflex, Peregrine, Syfer, Eurofarad, Texas Instrument, Miteq, Cobham, E2V, MA-COM, Hittite, Mini-Circuits, General Dynamics и др.);

Помимо этого, одним из направлений компании «ЭлектроПласт» является направление «Источники питания». Мы предлагаем Вам помощь Конструкторского отдела:

- Подбор оптимального решения, техническое обоснование при выборе компонента;
- Подбор аналогов;
- Консультации по применению компонента;
- Поставка образцов и прототипов;
- Техническая поддержка проекта;
- Защита от снятия компонента с производства.



Как с нами связаться

Телефон: 8 (812) 309 58 32 (многоканальный)

Факс: 8 (812) 320-02-42

Электронная почта: org@eplast1.ru

Адрес: 198099, г. Санкт-Петербург, ул. Калинина, дом 2, корпус 4, литера А.