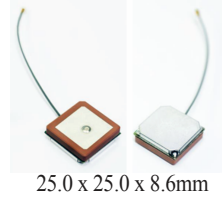


# GPS / GLONASS Active Internal Patch

## APAMPGJ-141

RoHS/RoHS II Compliant



25.0 x 25.0 x 8.6mm

MSL level: Not Applicable

### FEATURES:

- Active GPS and GLONASS Module (1575.42 and 1592 - 1610 MHz)
- Internal Module with Pre-Filter and LNA Gain block
- Patch Gain 2dBic (min) 3dBic (max),
- LNA Gain 23dB (3V), 24dB (5V)
- Wide Supply range (2.7V ~ 5.5V)
- VSWR 1.5:1
- Compact size (25mm x 8.6mm x 25mm)
- RHCP
- U.FL connector and 100mm micro-coax (1.13mm)
- RoHS/RoHS II compliant
- 2J Technology

### TYPICAL APPLICATIONS:

- Automotive Navigation
- Tracking Systems
- GPS Navigation in urban canyons

### STANDARD SPECIFICATIONS:

#### Antenna

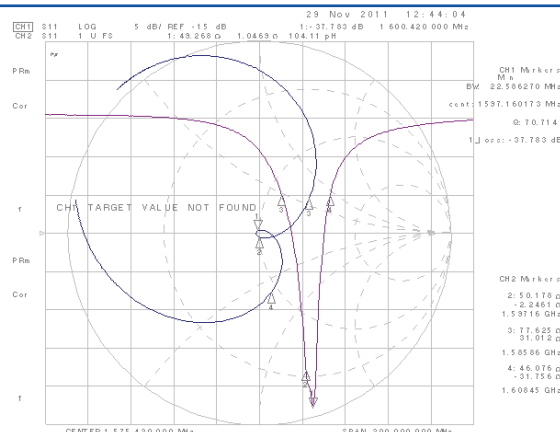
| Parameters            | Min. | Typ.    | Max.  | Units              | Note                             |
|-----------------------|------|---------|-------|--------------------|----------------------------------|
| Center Frequency      |      | 1575.42 |       | MHz                | GPS (In free Space)              |
|                       | 1592 |         | 1610  | MHz                | GLONASS                          |
| Bandwidth             | 10   |         |       | MHz                | GPS                              |
|                       | 18   |         |       | MHz                | GLONASS                          |
| VSWR                  |      |         | 1.5:1 |                    | (In free Space)                  |
| Polarization Model    | RHCP |         |       |                    |                                  |
| Impedance             |      | 50      |       | $\Omega$           |                                  |
| Gain                  | 2    |         | 3     | dBic               | (Based on 70x 70mm ground plane) |
| Operating Temperature | -40  |         | +85   | $^{\circ}\text{C}$ |                                  |

#### Low Noise Amplifier (LNA)

| Parameters       | Min. | Typ.    | Max. | Units | Note                                |
|------------------|------|---------|------|-------|-------------------------------------|
| Center Frequency |      | 1575.42 |      | MHz   | GPS                                 |
|                  | 1592 |         | 1610 | MHz   | GLONASS                             |
| DC Voltage       | 2.7  |         | 5.5  | V     |                                     |
| Gain             | 21   | 23      | 25   | dB    | (at 3.0V)                           |
|                  | 22   | 24      | 26   | dB    | (at 5.0V)                           |
| Output VSWR      |      |         | 2:1  |       |                                     |
| Noise Figure     |      |         | 2.5  | dB    | (Filter is placed before amplifier) |
| DC current       | 15   | 22      | 25   | mA    | (At 3.0V)                           |
| Power            |      |         | 138  | mW    |                                     |

### Antenna's Impedance and Return-Loss Characteristics

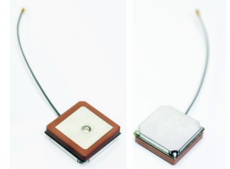
#### (S11 and Impedance Smith Chart)



ABRACON IS  
ISO9001:2008  
CERTIFIED

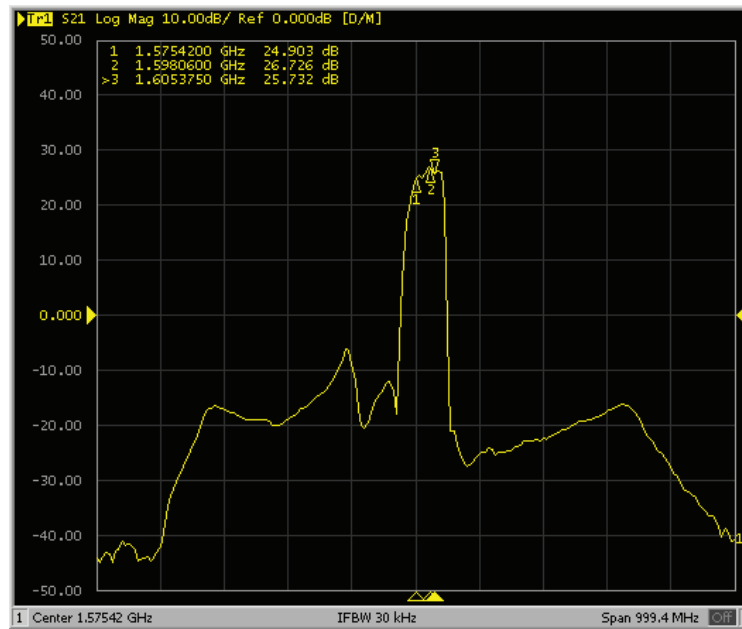


2 Faraday, Suite# B | Irvine | CA 92618 Revised: 08.03.15  
 Ph. 949.546.8000 | Fax. 949.546.8001  
 Visit [www.abracon.com](http://www.abracon.com) for Terms and Conditions of Sale



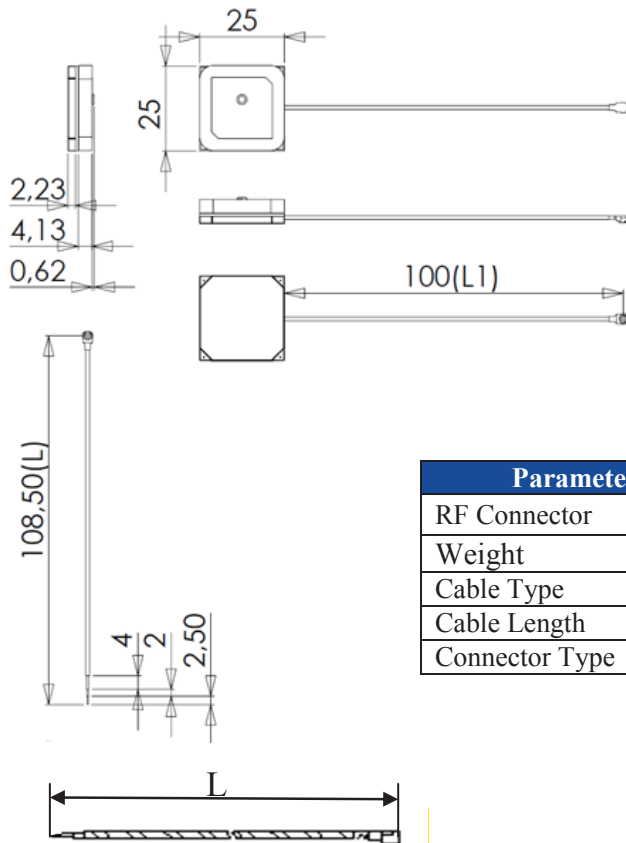
25.0 x 25.0 x 8.6mm

### Antenna Gain (S21)

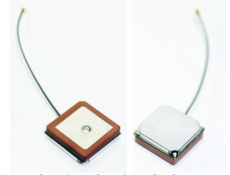


Antenna gain at 3V

### OUTLINE DRAWING:



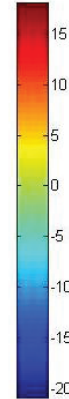
| Parameters     | Description               |
|----------------|---------------------------|
| RF Connector   | U.FL                      |
| Weight         | 14 g                      |
| Cable Type     | Micro-coax, $\Phi$ 1.13mm |
| Cable Length   | L1=100±1.5mm, L=108.5mm   |
| Connector Type | UFL                       |



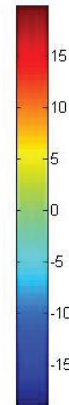
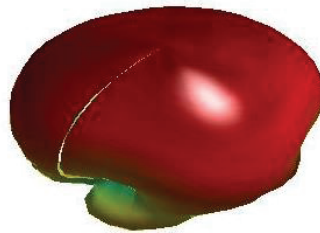
25.0 x 25.0 x 8.6mm

### RADIATION PATTERN

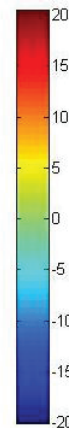
3D Radiation Pattern at 1.5754GHz, AZ=45, EL=45

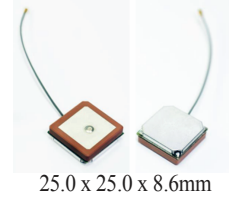


3D Radiation Pattern at 1.5979GHz, AZ=45, EL=45



3D Radiation Pattern at 1.6054GHz, AZ=45, EL=45

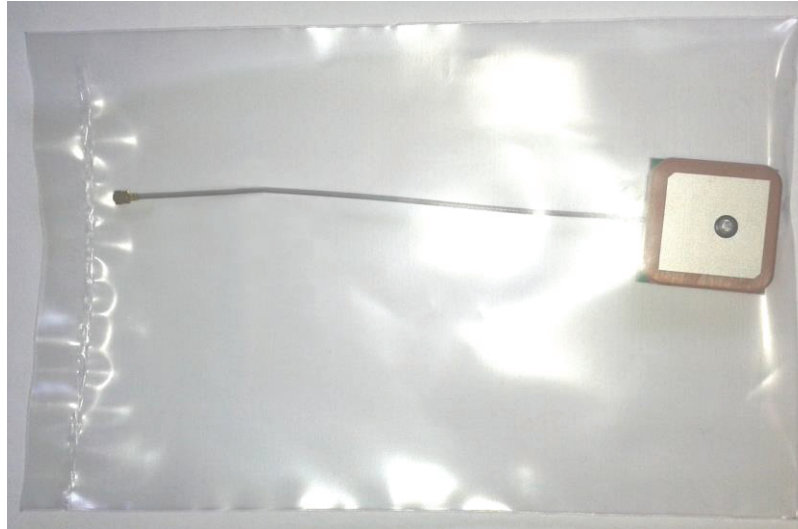




25.0 x 25.0 x 8.6mm

## PACKAGING:

Each antenna is packed individually in a poly bag. 1000pcs is the suggested quantity per 465x310x250mm Box.



## CAUTION:

- (1) Do not apply excess mechanical stress to the component body or terminations. Do not attempt to re-form or bend the components as this will cause damage to the component.
- (2) Do not expose the component to open flame.
- (3) This specification applies to the functionality of the component as a single unit. Please insure the component is thoroughly evaluated in the application circuit.

## NOTE:

- 1) The parts are manufactured in accordance with this specification. If other conditions and specifications which are required for this specification, please contact ABRACON for more information.
- 2) ABRACON will supply the parts in accordance with this specification unless we receive a written request to modify prior to an order placement.
- 3) In no case shall ABRACON be liable for any product failure from in appropriate handling or operation of the item beyond the scope of this specification.
- 4) When changing your production process, please notify ABRACON immediately.
- 5) ABRACON Corporation's products are COTS – Commercial-Off-The-Shelf products; suitable for Commercial, Industrial and, where designated, Automotive Applications. ABRACON's products are not specifically designed for Military, Aviation, Aerospace, Life-dependant Medical applications or any application requiring high reliability where component failure could result in loss of life and/or property. For applications requiring high reliability and/or presenting an extreme operating environment, written consent and authorization from ABRACON Corporation is required. Please contact ABRACON Corporation for more information.
- 6) All specifications and Marking will be subject to change without notice.

**ATTENTION:** Abracon Corporation's products are COTS – Commercial-Off-The-Shelf products; suitable for Commercial, Industrial and, where designated, Automotive Applications. Abracon's products are not specifically designed for Military, Aviation, Aerospace, Life-dependant Medical applications or any application requiring high reliability where component failure could result in loss of life and/or property. For applications requiring high reliability and/or presenting an extreme operating environment, written consent and authorization from Abracon Corporation is required. Please contact Abracon Corporation for more information.



Компания «ЭлектроПласт» предлагает заключение долгосрочных отношений при поставках импортных электронных компонентов на взаимовыгодных условиях!

Наши преимущества:

- Оперативные поставки широкого спектра электронных компонентов отечественного и импортного производства напрямую от производителей и с крупнейших мировых складов;
- Поставка более 17-ти миллионов наименований электронных компонентов;
- Поставка сложных, дефицитных, либо снятых с производства позиций;
- Оперативные сроки поставки под заказ (от 5 рабочих дней);
- Экспресс доставка в любую точку России;
- Техническая поддержка проекта, помощь в подборе аналогов, поставка прототипов;
- Система менеджмента качества сертифицирована по Международному стандарту ISO 9001;
- Лицензия ФСБ на осуществление работ с использованием сведений, составляющих государственную тайну;
- Поставка специализированных компонентов (Xilinx, Altera, Analog Devices, Intersil, Interpoint, Microsemi, Aeroflex, Peregrine, Syfer, Eurofarad, Texas Instrument, Miteq, Cobham, E2V, MA-COM, Hittite, Mini-Circuits, General Dynamics и др.);

Помимо этого, одним из направлений компании «ЭлектроПласт» является направление «Источники питания». Мы предлагаем Вам помощь Конструкторского отдела:

- Подбор оптимального решения, техническое обоснование при выборе компонента;
- Подбор аналогов;
- Консультации по применению компонента;
- Поставка образцов и прототипов;
- Техническая поддержка проекта;
- Защита от снятия компонента с производства.



#### Как с нами связаться

**Телефон:** 8 (812) 309 58 32 (многоканальный)

**Факс:** 8 (812) 320-02-42

**Электронная почта:** [org@eplast1.ru](mailto:org@eplast1.ru)

**Адрес:** 198099, г. Санкт-Петербург, ул. Калинина, дом 2, корпус 4, литера А.