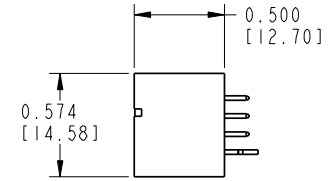
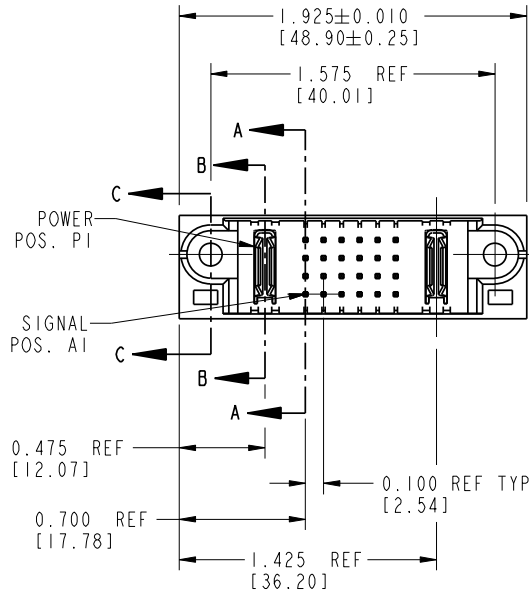
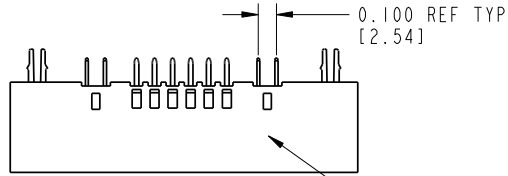


Tous droits strictement réservés. Reproduction ou communication à des tiers interdite sans quelque forme que ce soit sans autorisation écrite du propriétaire. Propriété de c FCI. Droits de reproduction FCI.

All rights strictly reserved. Reproduction or issue to third parties in any form without written authority from the proprietor. Property of FCI. Copyright FCI.



| | | | | | | | | | | | |
|-----------------------|------------------|-------|----|--------|---|---|---|---|---|-------|----|
| PRODUCT No. | ROWS | POWER | | SIGNAL | | | | | | POWER | |
| | | E1 | P1 | 1 | 2 | 3 | 4 | 5 | 6 | P2 | E2 |
| 51952-013-- NOTE 2 | D C B A | | | | | | | | | | |



| CODE | DIM "M" ±.010 [0.25] | CONTACT TYPE |
|------|-------------------------|--------------|
| E | 0.270 [6.86] | SIGNAL |
| H | 0.220 [5.59] | SIGNAL |
| PA | N/A [N/A] | POWER |
| HA | N/A [N/A] | HOLD-DOWN |

| mat'l code | | | | NOTE 1 | | tolerances unless otherwise specified | | CUSTOMER | |
|-------------|----------------|------|----------|--------|------------------------|---------------------------------------|------------------------------------|----------|--|
| lir | ecn no. | dr | date | linear | .XX±.01/0.X±0.3 | projection | COPY | | |
| A | V21906 | NEM | 12/20/02 | | .XXX±.005/0.XX±0.13 | | title IP + 24S + 1P | | |
| B | DG05-0478 | Ryan | 11/17/05 | angles | .XXX±.0020/0.XXX±0.051 | | VERTICAL SOLDER HEADER | | |
| | | | | dr | 0°±2° | | product family PwrBlade code 213 | | |
| | | | | engr | M. MOSTOLLER 12/20/02 | INCH/MM | size dwg no 51952-013 sheet 1 of 3 | | |
| | | | | chr | H. BREWBAKER 12/20/02 | scale 1:1 | | | |
| | | | | appd | M. MOSTOLLER 12/20/02 | | | | |
| sheet index | revision sheet | B 1 | B 2 | | | | | | |

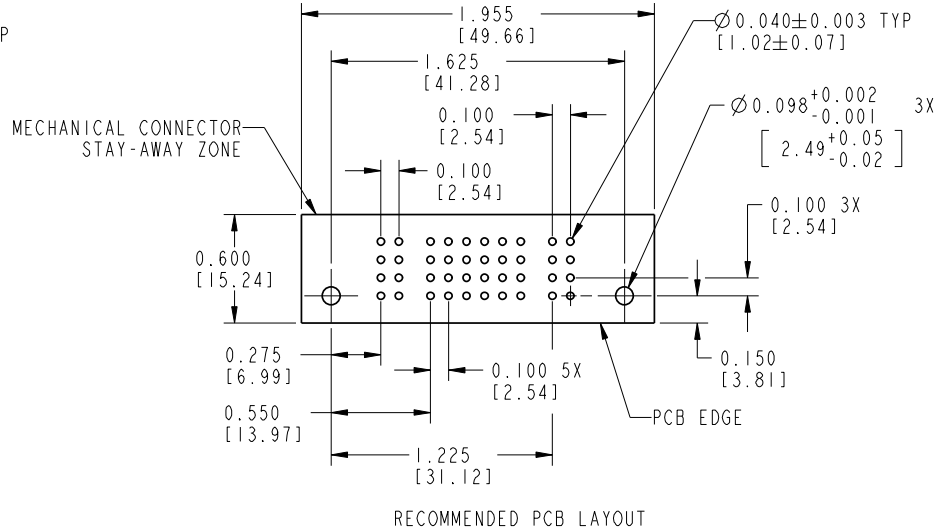
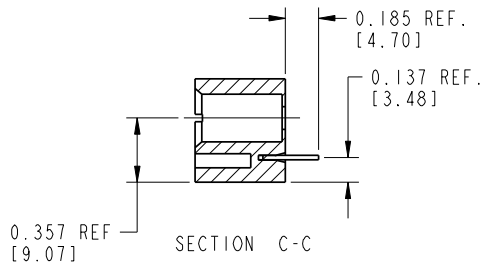
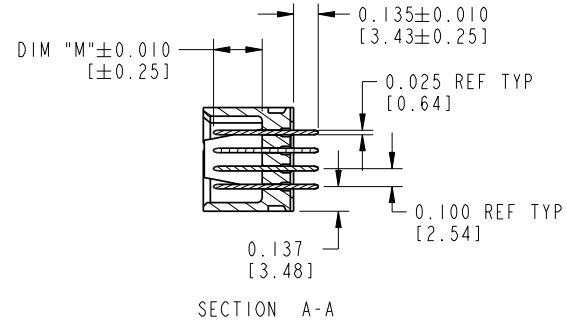
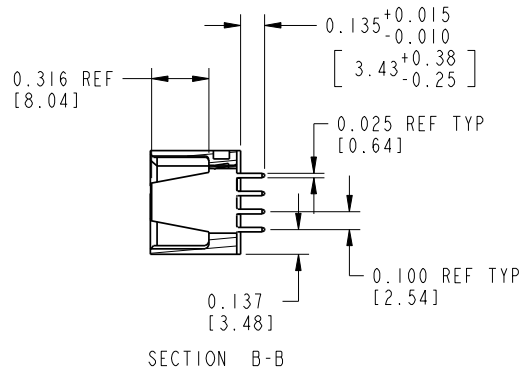
cage code 22526

Pro/E

Tous droits strictement reserves. Reproduction ou communication a des tiers interdite sans queque forme que ce soit sans autorisation ecrite du proprietaire. Propriete de c FCI. Droits de reproduction FCI.

All rights strictly reserved. Reproduction or issue to third parties in any form without written authority from the proprietor. Property of FCI. Copyright FCI.

PRODUCT NUMBER
51952-013--
NOTE 2



| | | | | | | | | | |
|-------------|----------------|--------|------|---------------------------------------|-----------------------|----------|--|------------------------|------------------------|
| mat'l code | | NOTE 1 | | tolerances unless otherwise specified | | CUSTOMER | | www.fciconnect.com | |
| lir | ecn no. | dr | date | linear | .XX±.01/0.X±0.3 | COPY | | projection | title |
| B | | | | | .XXX±.005/0.XX±0.13 | | | | IP + 24S + IP |
| | | | | angles | .XXX±.002/0.XXX±0.051 | INCH/MM | | | VERTICAL SOLDER HEADER |
| | | | | dr | 0° ± 2° | scale | | product family | PwrBlade |
| | | | | engr | M. MOSTOLLER 12/20/02 | 1:1 | | size | A |
| | | | | chr | H. BREWBAKER 12/20/02 | | | dwg no | 51952-013 |
| | | | | appd | M. MOSTOLLER 12/20/02 | | | code | 213 |
| sheet index | revision sheet | | | | | | | sheet | 2 of 3 |

cage code 22526

Pro/E

Tous droits strictement reserves. Reproduction ou communication a des tiers interdite sans queleque forme que ce soit sans autorisation ecrite du proprietaire. Property of FCI. Droits de reproduction FCI.

FCI

All rights strictly reserved. Reproduction or issue to third parties in any form whatever is not permitted without written authority from the proprietor. Property of FCI. Copyright FCI.

1 | 2

3 |

4

| |
|-----------------------|
| PRODUCT NUMBER |
| 51952-013-- NOTE 2 |

CONNECTOR NOTES:

- HOUSING MATERIAL: UL 94 V-0 GLASS FILLED HIGH TEMP THERMOPLASTIC
POWER CONTACT MATERIAL: COPPER ALLOY
SIGNAL CONTACT MATERIAL: COPPER ALLOY
- PLATING:
51952-013: SIGNAL PIN: 30u"/0.76um Au OVER 50u"/1.27um Ni ON THE CONTACT AREA
AND 100u"/2.54um SnPb OVER 50u"/1.27um Ni ON THE TERMINATION AREA
POWER PIN: 30u"/0.76um Au OVER 50u"/1.27um Ni ON THE CONTACT AREA
AND 100u"/2.54um SnPb OVER 50u"/1.27um Ni ON THE TERMINATION AREA

51952-013LF: SIGNAL PIN: 30u"/0.76um Au OVER 50u"/1.27um Ni ON THE CONTACT AREA
AND 78u"/2.00um Sn OVER 50u"/1.27um Ni ON THE TERMINATION AREA
POWER PIN: 30u"/0.76um Au OVER 50u"/1.27um Ni ON THE CONTACT AREA
AND 78u"/2.00um Sn OVER 50u"/1.27um Ni ON THE TERMINATION AREA

PART NUMBER 51952-013LF MEETS EUROPEAN UNION DIRECTIVE AND OTHER COUNTRY REGULATIONS AS DECCRIBED IN GS-22-008.

THE HOUSING WILL WITHSTAND EXPOSURE TO 260° PEAK TEMPERATURE FOR 10 SECONDS IN A WAVE SOLDER APPLICATION WITH A CIRCUIT BOARD.
- "MANUFACTURER'S" NAME, P/N, AND DATE CODE TO APPEAR ON THIS SURFACE
- PRODUCT SPECIFICATION GS-12-149
- ALL DIMENSIONS AND TOLERANCES ARE IN ACCORDANCE WITH ASME Y14.5M, UNLESS OTHERWISE SPECIFIED.

PCB NOTES:

- ALL DIMENSIONS ARE BASIC UNLESS OTHERWISE SPECIFIED.
- ALL THROUGH HOLES ARE LOCATED WITH A TRUE POSITION OF 0.004 [0.10]
- ALL HOLE DIAMETERS ARE FINISHED HOLE SIZE
- Ø0.098[2.41] THROUGH HOLES ARE UNPLATED.
- Ø0.0453±0.0010 [1.151±0.025] DRILLED HOLES PLATED WITH 0.0003 [0.008] MIN SnPb OVER 0.001 [0.03] TO 0.003 [0.08] Cu PLATING TO ACHIEVE A Ø0.040±0.003 [1.02±0.07] HOLE.

CONFIDENTIAL

| | | | | | | | | | | | |
|-------------|----------|--------|------|---------------------------------------|-----------------------|----------|--|----------------|--|---|--|
| mat'l code | | NOTE 1 | | tolerances unless otherwise specified | | CUSTOMER | | FCI | | www.fciconnect.com | |
| lfr | ecr no. | dr | date | linear | .XX±.01/0.X±0.3 | COPY | | projection | | title | |
| B | | | | | .XXX±.005/0.XX±0.13 | INCH/MM | | | | IP + 24S + 1P VERTICAL SOLDER HEADER | |
| | | | | angles | .XXX±.002/0.XXX±0.051 | scale | | product family | | code | |
| | | | | dr | 0° ± 2° | 1:1 | | PwrBlade | | 213 | |
| | | | | engr | M. MOSTOLLER 12/20/02 | | | size | | dwg no | |
| | | | | chr | H. BREWBAKER 12/20/02 | | | A | | 51952-013 | |
| | | | | appd | M. MOSTOLLER 12/20/02 | | | | | sheet 3 of 3 | |
| sheet index | revision | sheet | | | | | | | | | |

1 | 2

Pro/E

3 |

code code 22526

4



Компания «ЭлектроПласт» предлагает заключение долгосрочных отношений при поставках импортных электронных компонентов на взаимовыгодных условиях!

Наши преимущества:

- Оперативные поставки широкого спектра электронных компонентов отечественного и импортного производства напрямую от производителей и с крупнейших мировых складов;
- Поставка более 17-ти миллионов наименований электронных компонентов;
- Поставка сложных, дефицитных, либо снятых с производства позиций;
- Оперативные сроки поставки под заказ (от 5 рабочих дней);
- Экспресс доставка в любую точку России;
- Техническая поддержка проекта, помощь в подборе аналогов, поставка прототипов;
- Система менеджмента качества сертифицирована по Международному стандарту ISO 9001;
- Лицензия ФСБ на осуществление работ с использованием сведений, составляющих государственную тайну;
- Поставка специализированных компонентов (Xilinx, Altera, Analog Devices, Intersil, Interpoint, Microsemi, Aeroflex, Peregrine, Syfer, Eurofarad, Texas Instrument, Miteq, Cobham, E2V, MA-COM, Hittite, Mini-Circuits, General Dynamics и др.);

Помимо этого, одним из направлений компании «ЭлектроПласт» является направление «Источники питания». Мы предлагаем Вам помощь Конструкторского отдела:

- Подбор оптимального решения, техническое обоснование при выборе компонента;
- Подбор аналогов;
- Консультации по применению компонента;
- Поставка образцов и прототипов;
- Техническая поддержка проекта;
- Защита от снятия компонента с производства.



Как с нами связаться

Телефон: 8 (812) 309 58 32 (многоканальный)

Факс: 8 (812) 320-02-42

Электронная почта: org@eplast1.ru

Адрес: 198099, г. Санкт-Петербург, ул. Калинина, дом 2, корпус 4, литера А.