

LTC3634

15V Dual 3A Monolithic Step-Down Regulator Board for DDR Power

DESCRIPTION

Demonstration circuit 1839A is a dual output regulator focused specifically for DDR memory power applications. It's built based on the LTC3634, a high voltage dual channel, controlled on-time monolithic synchronous buck regulator. The DC1839A has an input voltage range of 3.6V to 15V. The output voltage of the first channel, V_{DDQ} , of the DC1839A has three fixed voltage settings; 1.5V, 1.8V, and 2.5V, and is capable of delivering up to 3A of output current. The second channel, V_{TT} , is set to regulate to half the voltage on the VDDQIN pin, which can be either the channel 1 output or an external reference voltage. It can source or sink a maximum of 3A. The LTC3634 also provides a 10mA buffered output of half VDDQIN – VTTR, which is used to provide the reference voltage needed for DDR applications. With the use of a timing resistor, the DC1839A can have its operating frequency programmed from 500kHz to 4MHz, or the DC1839A can be easily synchronized to an external clock, due to an internal phase-locked loop. The DC1839A V_{DDQ} output can operate in either Burst Mode® operation or

forced continuous mode. In Burst Mode operation, which is the preferred mode of low load current operation, the DC supply current is typically only 1.3mA (both channels) at no load (sleep mode), and less than 15µA in shutdown. In Burst Mode operation or continuous mode operation, the DC1839A is a very efficient circuit at high load currents: over 80% for either channel. The LTC3634 is also capable of in-phase or 180° out-of-phase operation, and to allow its output to track an external voltage, either coincidentally or ratiometrically. The LTC3634 comes in a 28-pin QFN or leaded package, which each having an exposed pad on the bottom side of the IC for better thermal performance. All of these features make the DC1839A an ideal circuit for powering DDR memory applications.

Design files for this circuit board are available at <http://www.linear.com/demo>

LT, LT, LTC, LTM, µModule, Linear Technology, the Linear logo and Burst Mode are registered trademarks of Linear Technology Corporation. All other trademarks are the property of their respective owners.

PERFORMANCE SUMMARY (T_A = 25°C)

PARAMETER	CONDITIONS		VALUE
Minimum Input Voltage			3.6V
Maximum Input Voltage			15V
Output Voltage $V_{OUT1} - V_{DDQ}$	$V_{IN} = 3.6V$ to 15V, $I_{OUT1} = 0A$ to 3A		1.5V ±2% (1.47V to 1.53V) 1.8V ±2% (1.764V to 1.836V) 2.5V ±2% (2.45V to 2.55V)
Typical Output Ripple V_{DDQ}	$V_{IN} = 12V$, $I_{OUT1} = 3A$ (20MHz BW)		< 20mV _{p-p}
Output Voltage $V_{OUT2} - V_{TT}$	$V_{IN} = 3.6V$ to 15V, $I_{OUT2} = 0A$ to ±3A	$V_{OUT1} = 1.5V$	0.75V ±3% (0.7275V to 0.7725V)
		$V_{OUT1} = 1.8V$	0.9V ±3% (0.873V to 0.927V)
		$V_{OUT1} = 2.5V$	1.25V ±3% (1.2125V to 1.2875V)
Typical Output Ripple V_{TT}	$V_{IN} = 12V$, $I_{OUT2} = ±3A$ (20MHz BW)		< 20mV _{p-p}
Nominal Switching Frequencies	RT = 324k		1MHz
Burst Mode-to-CCM transition	Channel 1: $V_{IN} = 12V$, $V_{OUT1} = 1.8V$, $f_{SW} = 1$ MHz		$I_{OUT1} = 1.6A$
INTV _{CC}			3.3V
VTTR	VDDQIN = 2.5V		1.25V

QUICK START PROCEDURE

The DC1839A is easy to set up to evaluate the performance of the LTC3634. For a proper measurement equipment configuration, set up the circuit according to the diagram in Figure 1.

NOTE: When measuring the input or output voltage ripple, care must be taken to avoid a long ground lead on the oscilloscope probe. Measure the input or output voltage ripple by touching the probe tip directly across the V_{IN} or V_{OUT} and GND terminals. See the proper scope probe technique in Figure 2.

Please follow the procedure outlined below for proper operation.

1. Connect the input power supply to the V_{IN} and GND terminals. Connect the loads between the V_{OUT} and GND terminals. Refer to Figure 1 for the proper measurement equipment setup.

Before proceeding to operation, insert jumper shunts XJP1 and XJP2 into the OFF positions of headers JP1 and JP2, shunt XJP3 into the forced continuous mode (FCM) position of MODE header JP3, shunt XJP4 into the 180° (out-of-phase) position of PHASE header JP4, shunt XJP5 into the soft-start positions of TRACK/SS header JP5, and shunt XJP6 into the V_{OUT1} voltage options of choice of header JP6: 1.2V, 1.5V, or 1.8V.

2. Apply 5V at V_{IN} . Measure both V_{OUTS} ; they should read 0V. If desired, one can measure the shutdown supply current at this point. The supply current should be less than 30 μ A in shutdown.
3. Turn on V_{OUT1} , V_{DDQ} , and V_{OUT2} , V_{TT} , by shifting shunts XJP1 and XJP2 from the OFF positions to the ON positions. Both output voltages should be within a tolerance of $\pm 1\%$.
4. Vary the input voltage from 3.6V to 15V, the channel 1 load current from 0 to 3A, and the channel 2 load current from 0 to ± 3 A (The V_{TT} channel sinks as well as sources current. An easy way to test this capability is shown in the test set-up diagram; connect a variable

resistor from V_{IN} to V_{OUT} , along with an ampmeter. The current will be V_{IN} minus V_{OUT} divided by the variable resistor value). V_{DDQ} output voltage tolerance should be within $\pm 2\%$, whereas the output voltage tolerance of V_{TT} should be within $\pm 3\%$.

5. Set the load current of both outputs to 3A and the input voltage to 12V, then measure each output ripple voltage (refer to Figure 2 for proper measurement technique); they should each measure less than 20mVAC. Also, observe the voltage waveform at either switch node (pins 16 and 17 for channel 1, and 23 and 24 for channel 2) of each regulator. (Both switch node waveforms should be rectangular in shape and 180° out-of-phase with each other). The switching frequencies should be between 800kHz and 1.2MHz ($T = 1.25\mu$ s and 0.833 μ s).
6. With the board under proper operation, observe the load regulation, efficiency, in-phase operation (by changing jumper XJP4 to the 90° position), or Burst Mode operation (by changing jumper XJP3 to the Burst Mode position).
7. (Optional) Moving the zero ohm resistor at $R_{V_{DDQ}}$, inserting it into R_{DDQIN} , and applying a voltage to turret V_{DDQIN} allows channel 2 output voltage (V_{TTR}) to be adjusted to any desired voltage (to one-half the voltage at V_{DDQIN}).

When finished, insert shunts XJP1 and XJP2 to the OFF position(s) and disconnect the power.

Warning: If the power for the demo board is carried in long leads, the input voltage at the part could ring, which could affect the operation of the circuit or even exceed the maximum voltage rating of the IC. To eliminate the ringing, a small Poscap capacitor (for instance, AVX part number TPSY226M035R0200) is inserted on the pads between the input power and return terminals on the bottom of the demo board. The (greater) ESR of the Poscap will dampen the (possible) ringing voltage due to the use of long input leads. On a normal, typical PCB, with short traces, this capacitor is not needed.

QUICK START PROCEDURE

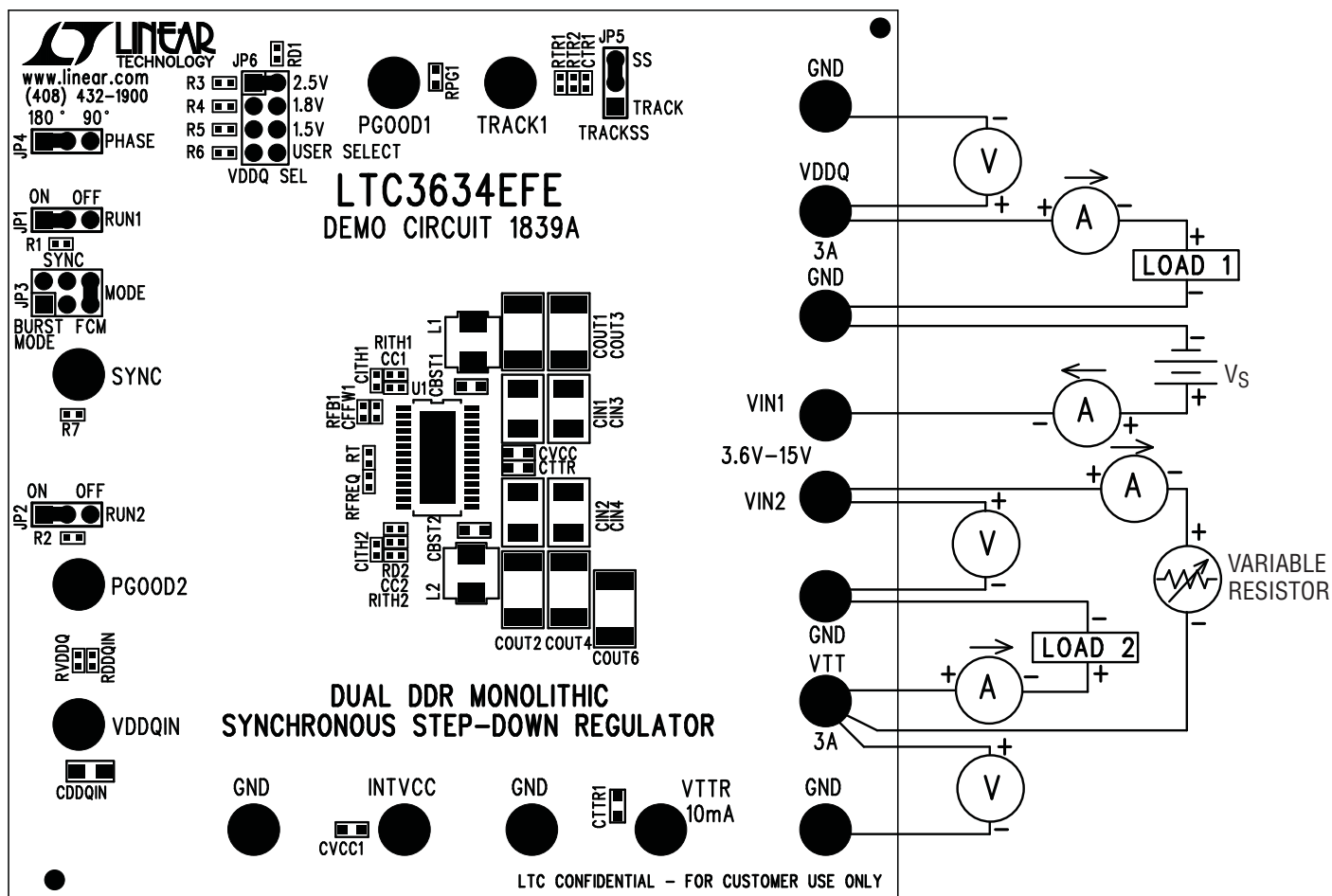


Figure 1. Proper Measurement Equipment Setup

QUICK START PROCEDURE

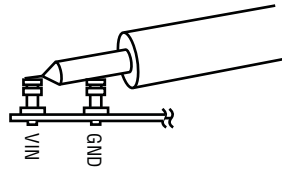


Figure 2. Measuring Input or Output Ripple

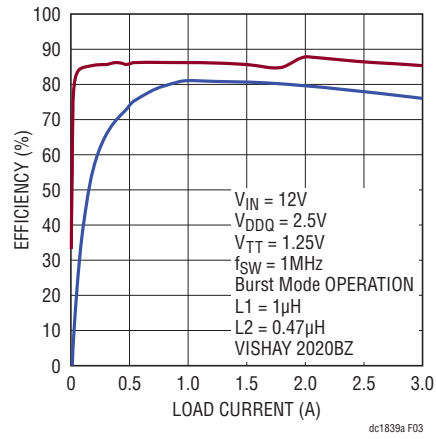
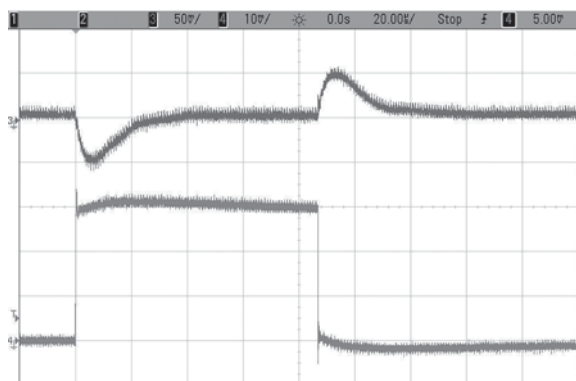


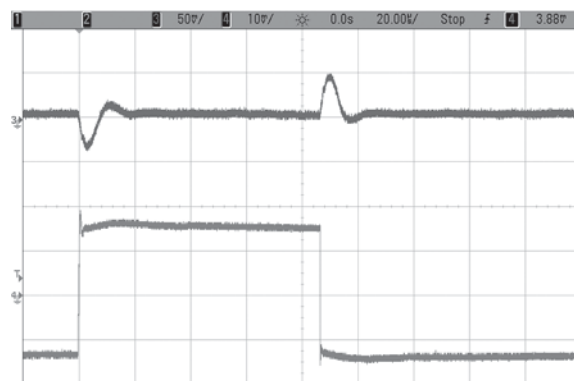
Figure 3. LTC3634 DC1839A Efficiency

QUICK START PROCEDURE



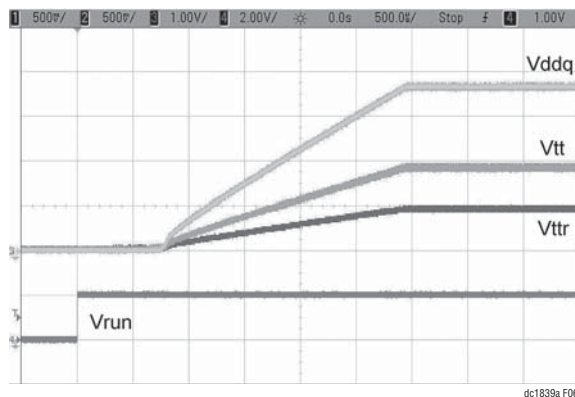
$V_{IN} = 12V$
 $V_{DDQ} = 1.8V$
 3A LOAD STEP (0A TO 3A)
 FORCED CONTINUOUS MODE
 $f_{SW} = 1MHz$
 EXTERNAL COMPENSATION: $R_{ITH1} = 18.2k$, $C_{ITH1} = 680pF$
 TRACE 3: OUTPUT VOLTAGE (50mV/DIV AC)
 TRACE 4: OUTPUT CURRENT (1A/DIV)

Figure 4. V_{DDQ} Load Step Response



$V_{IN} = 12V$
 $V_{TT} = 0.9V$
 $\pm 3A$ LOAD STEP (-3A TO 3A)
 FORCED CONTINUOUS MODE
 $f_{SW} = 1MHz$
 EXTERNAL COMPENSATION: $R_{ITH2} = 15k$, $C_{ITH2} = 1000pF$
 TRACE 3: OUTPUT VOLTAGE (50mV/DIV AC)
 TRACE 4: OUTPUT CURRENT (2A/DIV)

Figure 5. V_{TT} Load Step Response



$V_{IN} = 12V$
 $V_{DDQ} = 1.8V$
 $V_{TT} = 0.9V$
 3A LOAD (EACH)
 FORCED CONTINUOUS MODE
 $f_{sw} = 1MHz$
 $C_{SS} = 4700pF$
 TRACE 1: V_{DDQ} OUTPUT (500mV/DIV)
 TRACE 2: V_{TT} OUTPUT (500mV/DIV)
 TRACE 3: V_{TTR} OUTPUT (1V/DIV)
 TRACE 4: V_{RUN} VOLTAGE (2V/DIV)

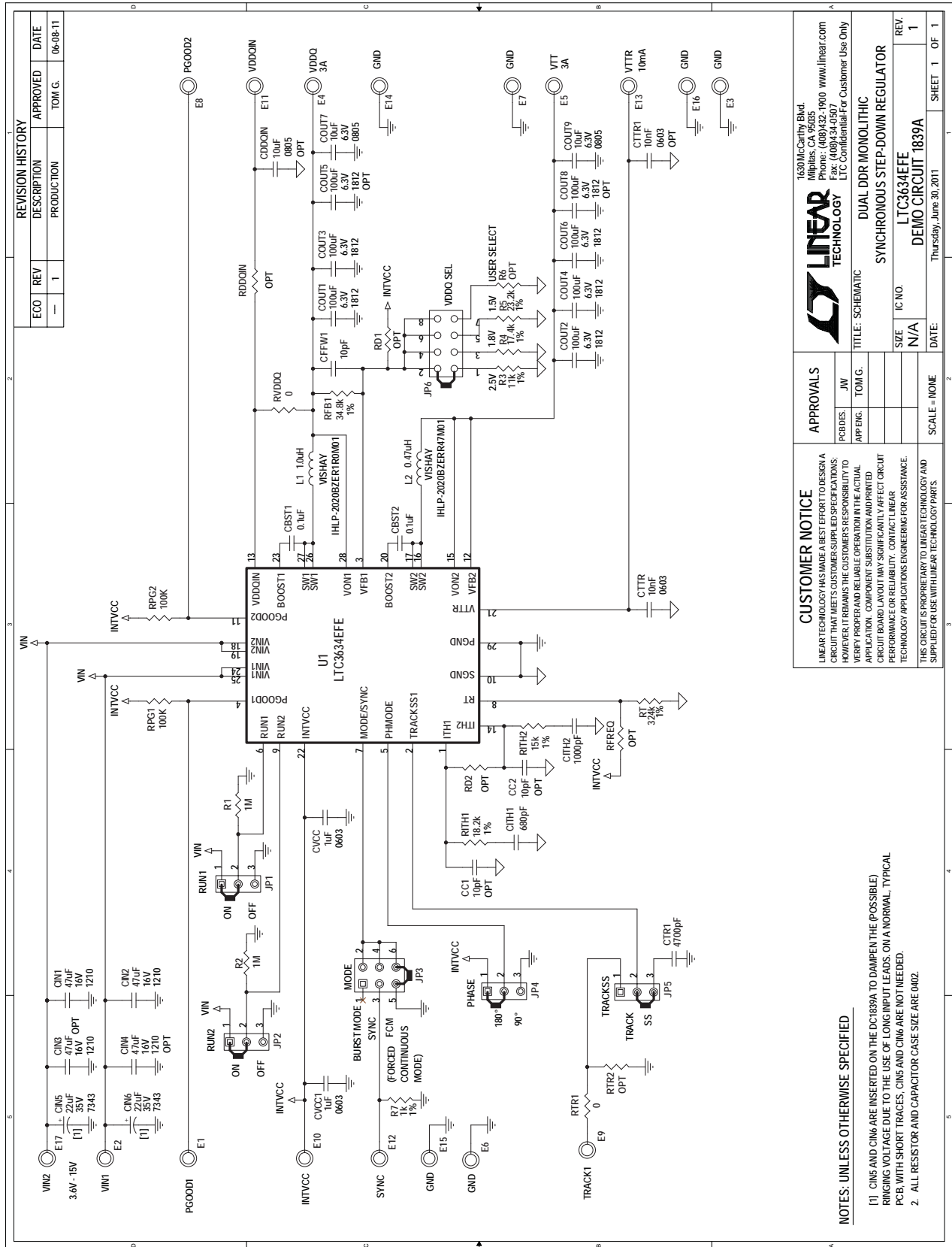
Figure 6. LTC3634 DC1839A Start-Up with Soft-Start

DEMO MANUAL DC1839A

PARTS LIST

ITEM	QTY	REFERENCE	PART DESCRIPTION	MANUFACTURER/PART NUMBER
Required Circuit Components				
1	2	CBST1, CBST2	CAP, 0603, 0.1 μ F, 10%, 50V, X7R	NIC NMC0603X7R104K50TRPF
2	1	CFFW1	CAP, 0402, 10pF, 5%, 25V, NPO	NIC NMC0402NPO100J25TRPF
3	2	CIN1, CIN2	CAP, 1210, 47 μ F, 20%, 16V, X5R	TAIYO YUDEN EMK325BJ476MM-T
4	1	CITH1	CAP, 0402, 680pF, 10%, 25V, X7R	AVX 04023C681KAT2A
5	1	CITH2	CAP, 0402, 1000pF, 10%, 25V, X7R	AVX 04023C102KAT2A
6	5	COU1-COU4, COU6	CAP, 1812, 100 μ F, 20%, 6.3V, X5R	TDK C4532X5R0J107M
7	1	CTRR	CAP, 0603, 10nF, 10%, 16V, X7R	AVX 0603YC103KAT2A
8	1	CVCC	CAP, 0603, 1 μ F, 10%, 16V, X5R	NIC NMC0603X5R105K16TRPF
9	1	L1	IND, 1.0 μ H	VISHAY IHLP2020BZER1R0M01
10	1	L2	IND, 0.47 μ H	VISHAY IHLP2020BZERR47M01
11	1	RFB1	RES, 0402, 34.8k Ω , 1%, 1/16W	NIC NRC04F3482TRF
12	1	RITH1	RES, 0402, 18.2k Ω , 1%, 1/16W	VISHAY CRCW040218K2FKED
13	1	RITH2	RES, 0402, 15k Ω , 1%, 1/16W	VISHAY CRCW040215K0FKED
14	1	RT	RES, 0402, 324k Ω , 1%, 1/16W	NIC NRC04F3243TRF
15	1	RVDDQ	RES, 0402, 0 Ω , JUMPER	NIC NRC04Z0TRF
16	1	R3	RES, 0402, 11k Ω , 1%, 1/16W	NIC NRC04F1102TRF
17	1	U1	IC, MONOLITHIC SYNCHRONOUS STEP-DOWN REGULATOR	LINEAR TECH LTC3634EFE
Additional Demo Board Circuit Components				
1	0	CC1, CC2 OPTION	CAP, 0402, 10pF, 5%, 25V, NPO	NIC NMC0402NPO100J25TRPF
2	0	CDDQIN OPTION	CAP, 0805, 10 μ F, 10%, 6.3V, X5R OPTION	NIC NMC0805X5R106K6.3TRPLP3KF
3	0	CIN3, CIN4 OPTION	CAP, 1210, 47 μ F, 20%, 16V, X5R	TAIYO YUDEN EMK325BJ476MM-T
4	2	CIN5, CIN6	CAP, TANT. 7343, 22 μ F, 20%, 35V	AVX TPSY226M035R0200
5	0	COU5, COU8 OPTION	CAP, 1812, 100 μ F, 20%, 6.3V, X5R	TDK C4532X5R0J107M OPTION
6	2	COU7, COU9	CAP, 0805, 10 μ F, 10%, 6.3V, X5R	NIC NMC0805X5R106K6.3TRPLP3KF
7	1	CTR1	CAP, 0402, 4700pF, 10%, 50V, X7R	TDK C1005X7R1H472K
8	0	CTTR1	CAP, 0603, 10nF, 10%, 16V, X7R	AVX 0603YC103KAT2A OPTION
9	1	CVCC1	CAP, 0603, 1 μ F, 10%, 16V, X5R	NIC NMC0603X5R105K16TRPF
10	0	RD1, RTR2, RD2, R6, RFREQ, RDDQIN OPTION	RES, 0402	OPTION
11	2	RPG1, RPG2	RES, 0402, 100k Ω , 5%, 1/16W	NIC NRC04J104TRF
12	1	RTR1	RES, 0402, 0 Ω , JUMPER	NIC NRC04Z0TRF
13	2	R1, R2	RES, 0402, 1M Ω , 5%, 1/16W	NIC NRC04J105TRF
14	1	R4	RES, 0402, 17.4k Ω , 1%, 1/16W	NIC NRC04F1742TRF
15	1	R5	RES, 0402, 23.2k Ω , 1%, 1/16W	NIC NRC04F2322TRF
16	1	R7	RES, 0402, 1k Ω , 1%, 1/16W	NIC NRC04F1001TRF
Hardware/Components (For Demo Board Only)				
1	17	E1-E17	TURRET	MILL-MAX 2501-2-00-80-00-00-07-0
2	4	JP1, JP2, JP4, JP5	HEADER, 3-PIN, 2mm	SAMTEC TMM-103-02-L-S
3	1	JP3	HEADER, 3-PIN, DBL ROW 2mm	SAMTEC TMM 103-02-L-D
4	1	JP6	HEADER, 4-PIN, DBL ROW 2mm	SAMTEC TMM 104-02-L-D
5	6	JP1-JP6	SHUNT, 2mm	SAMTEC 2SN-BK-G

SCHEMATIC DIAGRAM



REVISION HISTORY			
ECO	REV	DESCRIPTION	DATE
—	1	PRODUCTION	06-08-11

1630 McCarthy Blvd.
Milpitas, CA 95035
Phone: (408)432-1900 www.linear.com
Fax: (408)434-0507
LTC Confidential For Customer Use Only

LINEAR TECHNOLOGY

TITLE: SCHEMATIC
DUAL DDR MONOLITHIC
SYNCHRONOUS STEP-DOWN REGULATOR
LTC3634EFE
DEMO CIRCUIT 1839A

REV. 1
DATE: Thursday, June 30, 2011
SHEET 1 OF 1

APPROVALS

DESIGNER	JW
APP'NG	TOM.G.
SCALE	NONE

CUSTOMER NOTICE
LINEAR TECHNOLOGY HAS MADE A BEST EFFORT TO DESIGN A CIRCUIT THAT MEETS CUSTOMER SUPPLIED SPECIFICATIONS; HOWEVER, IT REMAINS THE CUSTOMER'S RESPONSIBILITY TO VERIFY PROPER AND RELIABLE OPERATION IN THE ACTUAL APPLICATION. COMPONENT SUBSTITUTION AND PRINTED CIRCUIT BOARD LAYOUT MAY SIGNIFICANTLY AFFECT CIRCUIT PERFORMANCE OR RELIABILITY. CONTACT LINEAR TECHNOLOGY APPLICATIONS ENGINEERING FOR ASSISTANCE. THIS CIRCUIT IS PROPRIETARY TO LINEAR TECHNOLOGY AND SUPPLIED FOR USE WITH LINEAR TECHNOLOGY PARTS.

NOTES: UNLESS OTHERWISE SPECIFIED

[1] C18 AND C19 ARE INSERTED ON THE DC1839A TO DAMPEN THE (POSSIBLE) RINGING VOLTAGE DUE TO THE USE OF LONG INPUT LEADS. ON A NORMAL, TYPICAL PCB, WITH SHORT TRACES, C18 AND C19 ARE NOT NEEDED.

2. ALL RESISTOR AND CAPACITOR CASE SIZE ARE 0402.



Information furnished by Linear Technology Corporation is believed to be accurate and reliable. However, no responsibility is assumed for its use. Linear Technology Corporation makes no representation that the interconnection of its circuits as described herein will not infringe on existing patent rights.

DEMO MANUAL DC1839A

DEMONSTRATION BOARD IMPORTANT NOTICE

Linear Technology Corporation (LTC) provides the enclosed product(s) under the following **AS IS** conditions:

This demonstration board (DEMO BOARD) kit being sold or provided by Linear Technology is intended for use for **ENGINEERING DEVELOPMENT OR EVALUATION PURPOSES ONLY** and is not provided by LTC for commercial use. As such, the DEMO BOARD herein may not be complete in terms of required design-, marketing-, and/or manufacturing-related protective considerations, including but not limited to product safety measures typically found in finished commercial goods. As a prototype, this product does not fall within the scope of the European Union directive on electromagnetic compatibility and therefore may or may not meet the technical requirements of the directive, or other regulations.

If this evaluation kit does not meet the specifications recited in the DEMO BOARD manual the kit may be returned within 30 days from the date of delivery for a full refund. **THE FOREGOING WARRANTY IS THE EXCLUSIVE WARRANTY MADE BY THE SELLER TO BUYER AND IS IN LIEU OF ALL OTHER WARRANTIES, EXPRESSED, IMPLIED, OR STATUTORY, INCLUDING ANY WARRANTY OF MERCHANTABILITY OR FITNESS FOR ANY PARTICULAR PURPOSE. EXCEPT TO THE EXTENT OF THIS INDEMNITY, NEITHER PARTY SHALL BE LIABLE TO THE OTHER FOR ANY INDIRECT, SPECIAL, INCIDENTAL, OR CONSEQUENTIAL DAMAGES.**

The user assumes all responsibility and liability for proper and safe handling of the goods. Further, the user releases LTC from all claims arising from the handling or use of the goods. Due to the open construction of the product, it is the user's responsibility to take any and all appropriate precautions with regard to electrostatic discharge. Also be aware that the products herein may not be regulatory compliant or agency certified (FCC, UL, CE, etc.).

No License is granted under any patent right or other intellectual property whatsoever. **LTC assumes no liability for applications assistance, customer product design, software performance, or infringement of patents or any other intellectual property rights of any kind.**

LTC currently services a variety of customers for products around the world, and therefore this transaction **is not exclusive**.

Please read the DEMO BOARD manual prior to handling the product. Persons handling this product must have electronics training and observe good laboratory practice standards. **Common sense is encouraged.**

This notice contains important safety information about temperatures and voltages. For further safety concerns, please contact a LTC application engineer.

Mailing Address:

Linear Technology
1630 McCarthy Blvd.
Milpitas, CA 95035

Copyright © 2004, Linear Technology Corporation

dc1839af



Linear Technology Corporation
1630 McCarthy Blvd., Milpitas, CA 95035-7417
(408) 432-1900 • FAX: (408) 434-0507 • www.linear.com

LT 0711 • PRINTED IN USA
**LINEAR**
TECHNOLOGY
© LINEAR TECHNOLOGY CORPORATION 2011



Компания «ЭлектроПласт» предлагает заключение долгосрочных отношений при поставках импортных электронных компонентов на взаимовыгодных условиях!

Наши преимущества:

- Оперативные поставки широкого спектра электронных компонентов отечественного и импортного производства напрямую от производителей и с крупнейших мировых складов;
- Поставка более 17-ти миллионов наименований электронных компонентов;
- Поставка сложных, дефицитных, либо снятых с производства позиций;
- Оперативные сроки поставки под заказ (от 5 рабочих дней);
- Экспресс доставка в любую точку России;
- Техническая поддержка проекта, помощь в подборе аналогов, поставка прототипов;
- Система менеджмента качества сертифицирована по Международному стандарту ISO 9001;
- Лицензия ФСБ на осуществление работ с использованием сведений, составляющих государственную тайну;
- Поставка специализированных компонентов (Xilinx, Altera, Analog Devices, Intersil, Interpoint, Microsemi, Aeroflex, Peregrine, Syfer, Eurofarad, Texas Instrument, Miteq, Cobham, E2V, MA-COM, Hittite, Mini-Circuits, General Dynamics и др.);

Помимо этого, одним из направлений компании «ЭлектроПласт» является направление «Источники питания». Мы предлагаем Вам помощь Конструкторского отдела:

- Подбор оптимального решения, техническое обоснование при выборе компонента;
- Подбор аналогов;
- Консультации по применению компонента;
- Поставка образцов и прототипов;
- Техническая поддержка проекта;
- Защита от снятия компонента с производства.



Как с нами связаться

Телефон: 8 (812) 309 58 32 (многоканальный)

Факс: 8 (812) 320-02-42

Электронная почта: org@eplast1.ru

Адрес: 198099, г. Санкт-Петербург, ул. Калинина, дом 2, корпус 4, литера А.