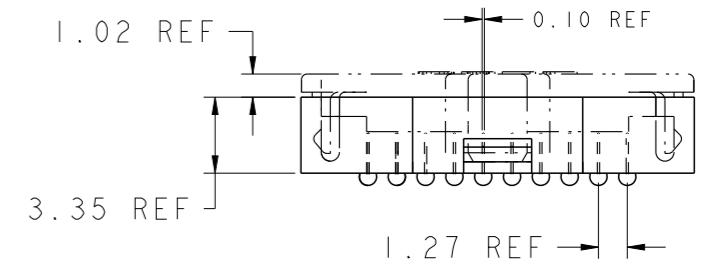
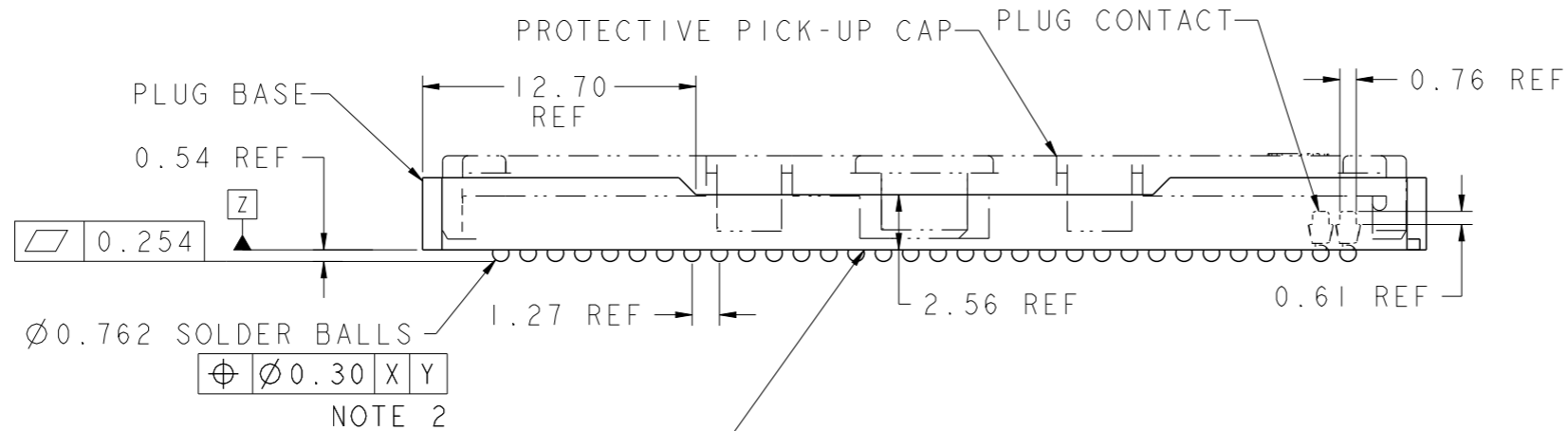
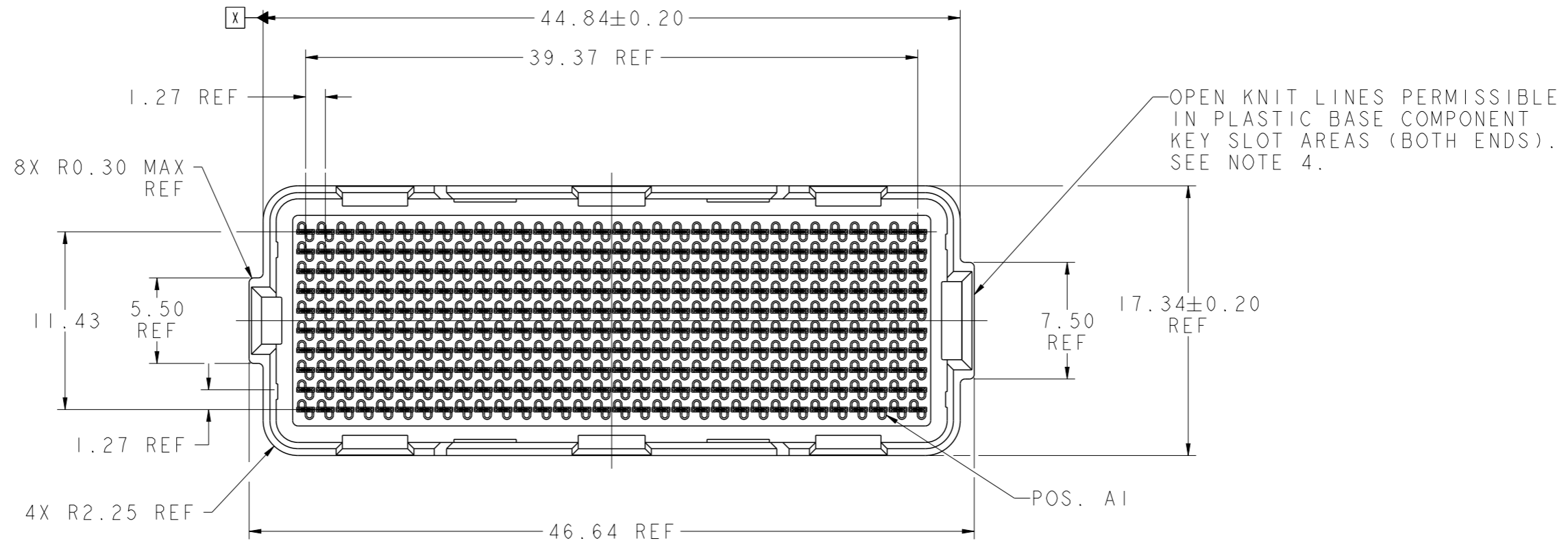


PRODUCT NUMBER

SEE SHEET 5



CONTINUOUS OPEN KNIT LINE CRACKS (TRAVERSING THE ENTIRE BODY LENGTH OF THE CONNECTOR) WHICH CAUSE CRITICAL-TO-FUNCTION DIMENSIONAL CHANGES THAT AFFECT THE CONNECTORS MECHANICAL ALIGNMENT FEATURES ARE NOT PERMISSIBLE. SEE NOTE 4.

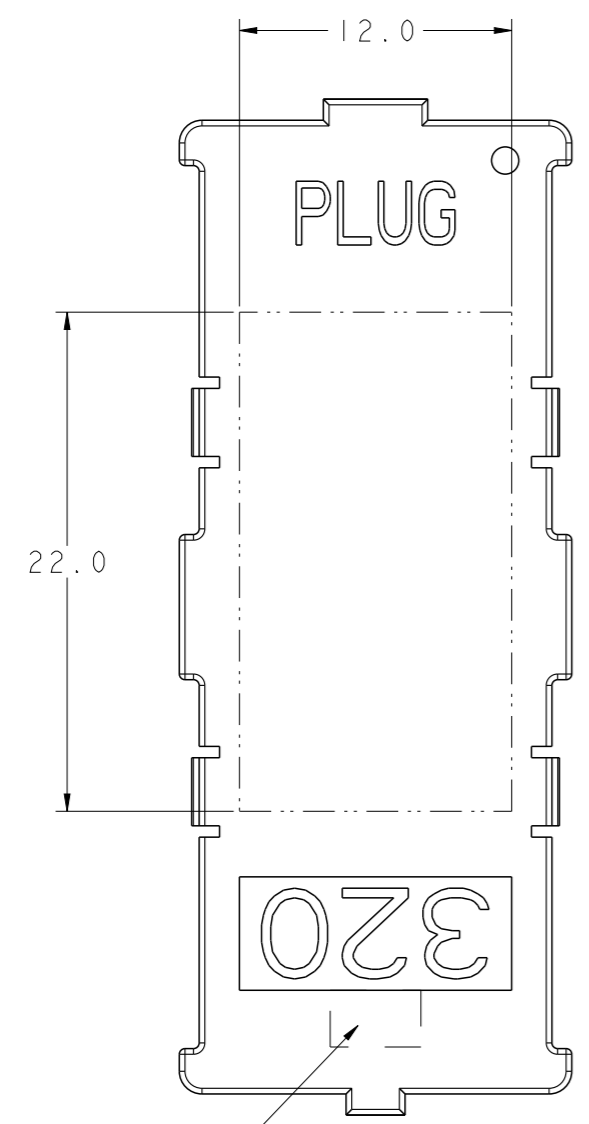
spec ref	-	dr	Dave Horchler	2013/01/22	projection	mm	size	A3	scale	3:1
tolerance std	ASME Y14.5	eng	M Srinivasan	2013/07/15			ecn no	REL-15184-1	rel level	Released
TOLERANCES UNLESS OTHERWISE SPECIFIED		chr	-	-						
surface		linear	0.X	±0.3		0mm PLUG ASSEMBLY 10 x 32 = 320 POSITIONS	dwg no	10123981	rev	B
			0.XX	±0.13						
			0.XXX	±0.051						
ASME Y14.5	angular	0°	±0°	www.fci.com	cat. no.	Product - Customer Drw	sheet 1 of 5			



Copyright FCI.

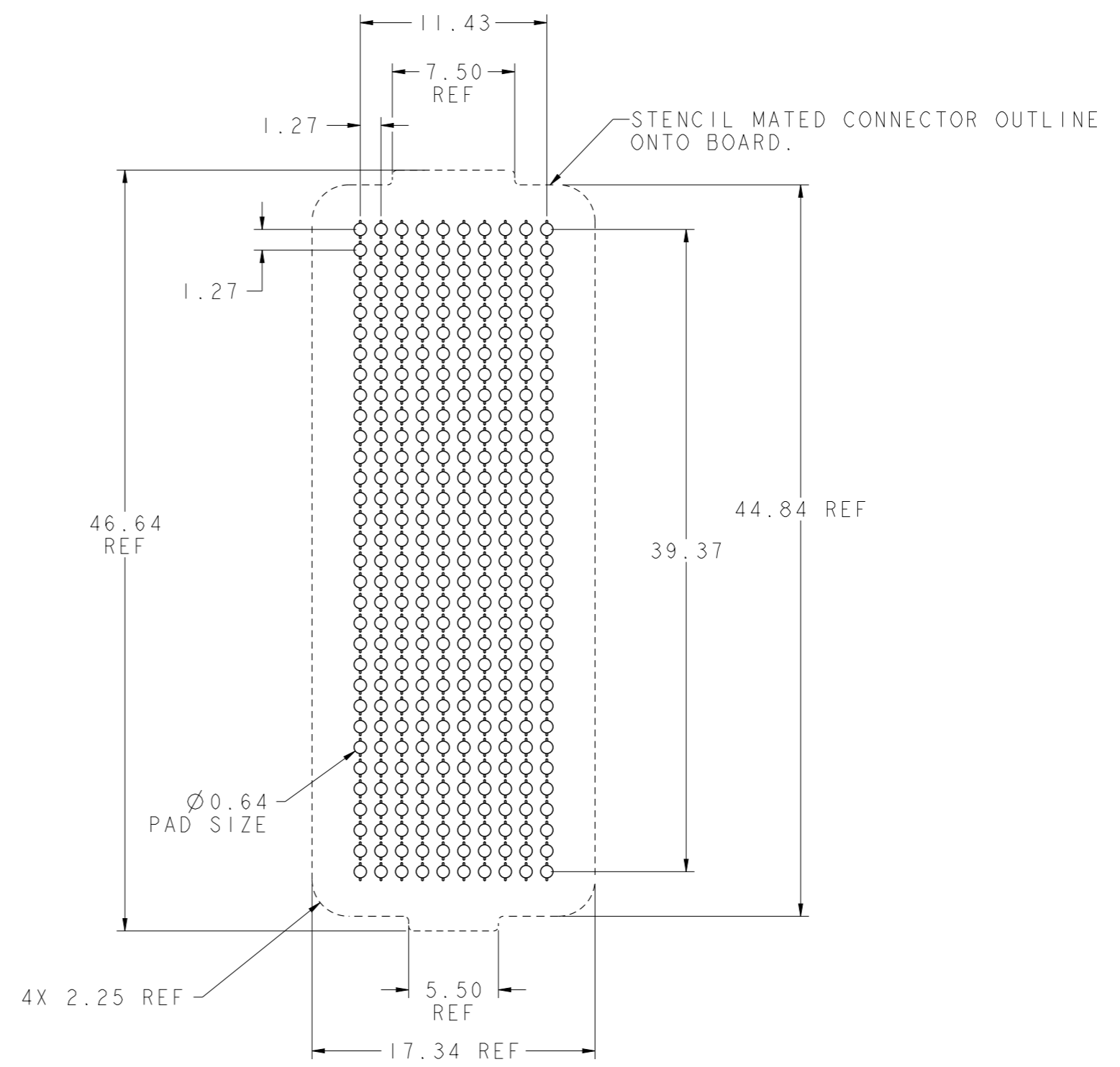
PRODUCT NUMBER

SEE SHEET 5



NOTE 6

FLAT AREA FOR PICK-UP CAP



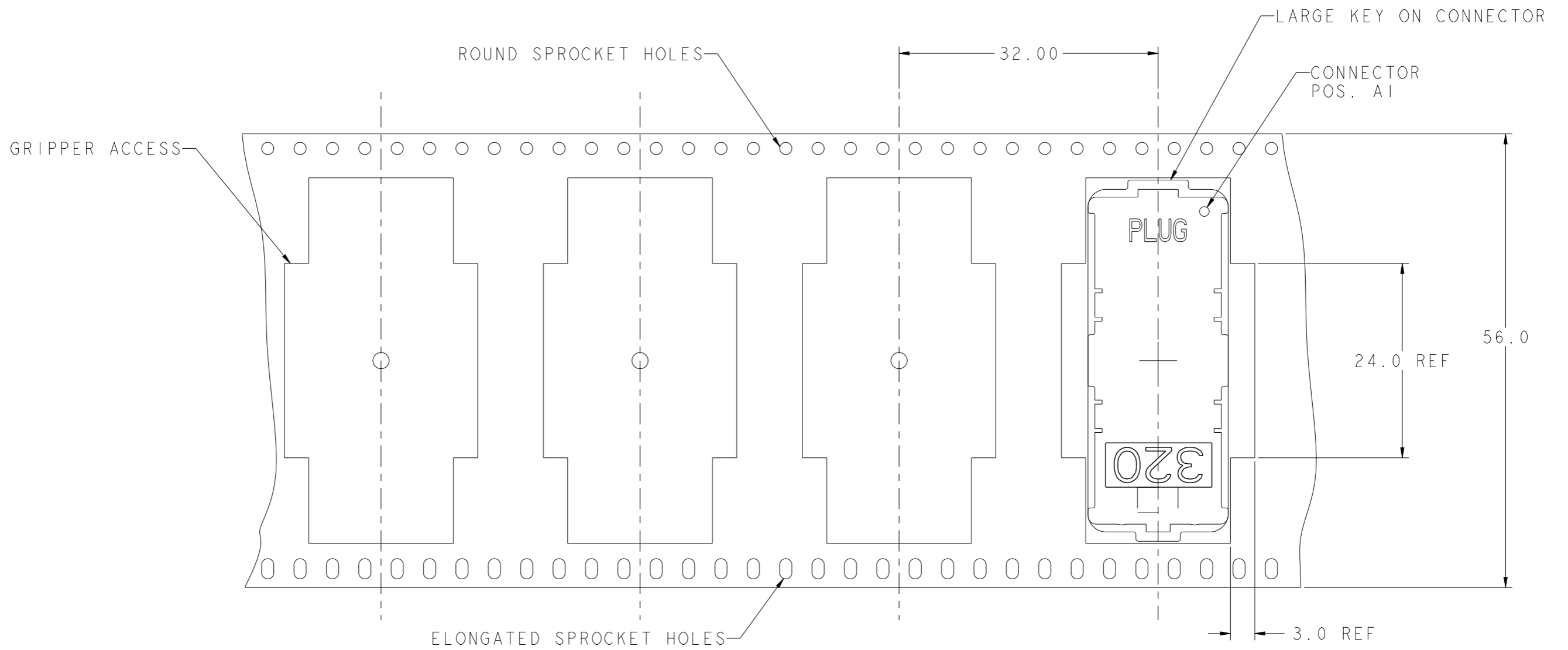
BOARD PATTERN

spec ref	-	dr	Dave Horchler	2013/01/22	projection	mm	size	A3	scale	3:1
tolerance std	ASME Y14.5	eng	M Srinivasan	2013/07/15			ecn no	ELX-V-15184-1	rel level	Released
	TOLERANCES UNLESS OTHERWISE SPECIFIED	chr	-	apppr						
surface	✓	linear	0.X	±0.3		0mm PLUG ASSEMBLY 10 x 32 = 320 POSITIONS	dwg no 10123981	rev B	ASME Y14.5	angular 0° ±0°
			0.XX	±0.13						
			0.XXX	±0.051						
www.fci.com		cat. no.		Product - Customer Drw			sheet 2 of 5			



Copyright FCI.

PRODUCT NUMBER
SEE SHEET 5



DIE - REEL DIRECTION



TAPE & REEL PACKAGING
PER EIA 481 - 3
SCALE NONE

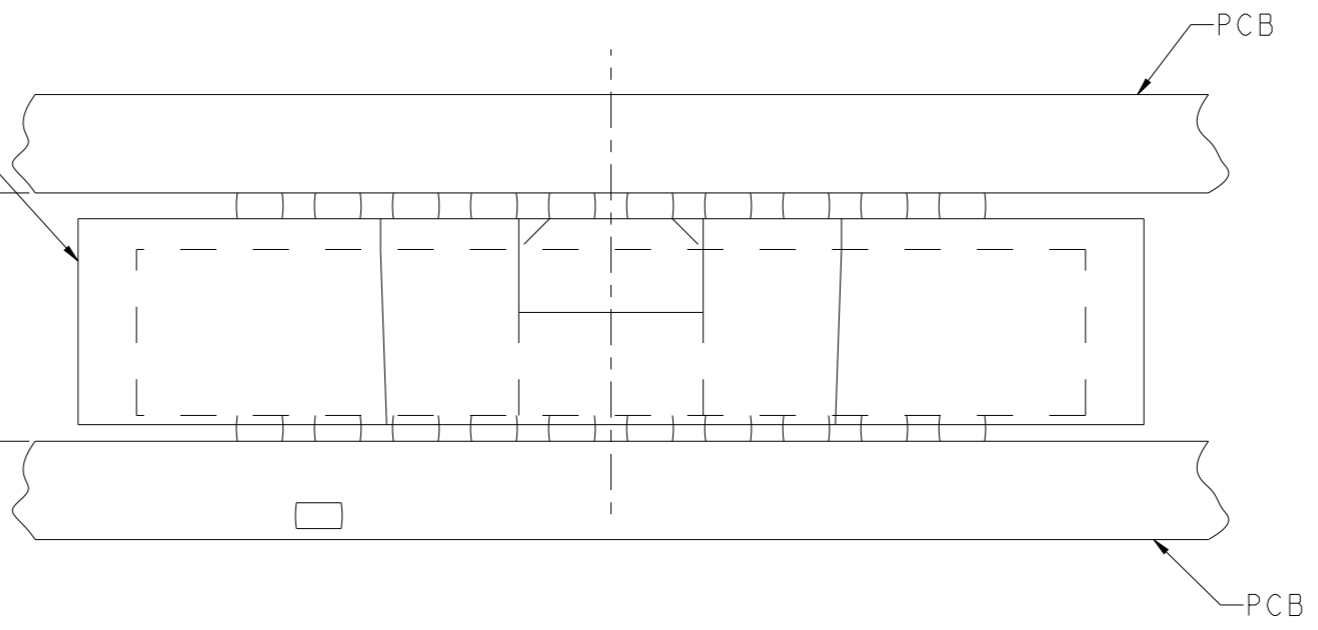
spec ref -		dr	Dave Horchler	2013/01/22	projection	mm	size	A3	scale	3:1
tolerance std	ASME Y14.5	TOLERANCES UNLESS OTHERWISE SPECIFIED			eng	M Srinivasan	2013/07/15	ecn no	ELX-V-15184-1	
surface	✓	linear	0.X	±0.3	chr	-	product family	MEG-ARRAY	rel level	Released
			0.XX	±0.13	appr	R Marshall	2013/07/15	0mm PLUG ASSEMBLY	dwg no	10123981
			0.XXX	±0.051	www.fci.com		cat. no.	Product - Customer Drw	rev	B
		angular	0°	±0°				sheet 3 of 5		

PRODUCT NUMBER

SEE SHEET 5

PLUG ASSY
P/N 10123981-XXX

DIM "A" REF
MATED HEIGHT
AFTER REFLOW
SEE NOTE 3



MATED HEIGHT AFTER REFLOW IS BASED ON Ø0.64mm PAD (METAL-DEFINED)
AND 0.13mm SOLDER PASTE STENCIL THICKNESS. SEE NOTE 3

END VIEW - MATED CONNECTORS
SCALE NONE



Copyright FCI.

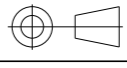


spec ref	-			dr	Dave Horchler	2013/01/22	projection	mm	size	A3	scale	3:1												
tolerance std	ASME Y14.5			eng	M Srinivasan	2013/07/15			ecn no		ELX-V-15184-1													
TOLERANCES UNLESS OTHERWISE SPECIFIED			chr	-	-	product family			MEG-ARRAY		rel level		Released											
surface		linear	0.X	±0.3		0mm PLUG ASSEMBLY 10 x 32 = 320 POSITIONS	cat. no.	Product - Customer Drw	dwg no 10123981	rev B	ASME Y14.5		angular	0°	±0°	www.fci.com	Product - Customer Drw	sheet 4 of 5						
				0.XX							±0.13													
				0.XXX							±0.051													

PRODUCT NUMBER	PICK-UP CAP (NATURAL OR BLACK IN COLOR)	CONTACT PLATING AND THICKNESS	SOLDER BALL	NOTES
10123981-002	YES	15u" (.38um) Au	SnPb	
10123981-002LF	YES	15u" (.38um) Au	LEAD FREE	4 AND 5
10123981-092	YES	15u" (.38um) GXT	SnPb	
10123981-092LF	YES	15u" (.38um) GXT	LEAD FREE	4 AND 5
10123981-102	YES	30u" (.76um) Au	SnPb	
10123981-102LF	YES	30u" (.76um) Au	LEAD FREE	4 AND 5
10123981-192	YES	30u" (.76um) GXT	SnPb	
10123981-192LF	YES	30u" (.76um) GXT	LEAD FREE	4 AND 5
10123981-202	YES	50u" (1.27um) Au SPECIAL	SnPb	8
10123981-202LF	YES	50u" (1.27um) Au SPECIAL	LEAD FREE	4, 5 AND 8
10123981-292	YES	50u" (1.27um) GXT SPECIAL	SnPb	8
10123981-292LF	YES	50u" (1.27um) GXT SPECIAL	LEAD FREE	4, 5 AND 8
10123981-A02	YES	30u" (.76um) Au SPECIAL	SnPb	CUSTOMER SPECIAL
10123981-A02LF	YES	30u" (.76um) Au SPECIAL	LEAD FREE	CUSTOMER SPECIAL

NOTES:

- ① MATERIAL:
HOUSING: LCP-NATURAL
CONTACT: COPPER ALLOY

PLATING:
CONTACT: 15μ" (0.38μm) GXT OVER Ni UNDERPLATE
SOLDER BALL: LEAD FREE
95.5Sn/4Ag/0.5Cu
- ② SOLDER BALLS WILL NOT HAVE PERFECT SPHERICAL SHAPES DUE TO REFLOW ATTACHMENT.
- ③ MATED HEIGHT EFFECTED BY CUSTOMER'S PCB PAD SIZE, PLATING, SOLDER REFLOW PROFILE, & SOLDER PASTE.
- ④ FOR PROPER APPLICATION FOLLOW FCI APPLICATION SPECIFICATION GS-20-033 LEAD FREE SOLDER BALLS WILL NOT SOLDER PROPERLY IN A LEADED SOLDER PROCESS DUE TO A HIGHER REFLOW TEMPERATURE. LEAD FREE PRODUCT IS THEREFORE NOT BACKWARDS COMPATIBLE WITH LEADED OR SOME SOLDERING APPLICATIONS. REFERENCE FCI APPLICATION SPECIFICATION.
- ⑤ THIS PRODUCT MEETS EUROPEAN UNION DIRECTIVES AND OTHER COUNTRY REGULATIONS AS DESCRIBED IN GS-47-0004 PRODUCT MEETING THIS DIRECTIVE IS IDENTIFIED IN THE LOT CODE NUMBER MARKED ON EACH PART BY HAVING AN "X" IN THE SEVENTH CHARACTER POSITION.
- ⑥ CURRENT COMPANY LOGO TO BE VISIBLE IN APPROXIMATE AREA SHOWN.
- ⑦ SEE PRODUCT SPEC GS-12-100 PER TEST AND PERFORMANCE INFORMATION.
- ⑧ PLATING FOR INDICATED -2XX SERIES NUMBERS MEET THE REQUIREMENTS OF GR-1217-CORE, CENTRAL OFFICE ENVIROMENT, (25 YEARS LIFE EXPECTANCY). THIS SERIES HAS SPECIAL CONTACT GEOMETRY.

spec ref	-	dr	Dave Horchler	2013/01/22	projection	mm	size	A3	scale	3:1	
tolerance std	ASME Y14.5	eng	M Srinivasan	2013/07/15			ecn no	ELX-V-15184-1			
		chr	-	-			product family	MEG-ARRAY	rel level	Released	
surface	linear	appr	R Marshall	2013/07/15			0mm PLUG ASSEMBLY	dwg no	10123981	rev	B
	angular	www.fci.com		cat. no.	Product - Customer Drw		sheet 5 of 5				



Copyright FCI.



Компания «ЭлектроПласт» предлагает заключение долгосрочных отношений при поставках импортных электронных компонентов на взаимовыгодных условиях!

Наши преимущества:

- Оперативные поставки широкого спектра электронных компонентов отечественного и импортного производства напрямую от производителей и с крупнейших мировых складов;
- Поставка более 17-ти миллионов наименований электронных компонентов;
- Поставка сложных, дефицитных, либо снятых с производства позиций;
- Оперативные сроки поставки под заказ (от 5 рабочих дней);
- Экспресс доставка в любую точку России;
- Техническая поддержка проекта, помощь в подборе аналогов, поставка прототипов;
- Система менеджмента качества сертифицирована по Международному стандарту ISO 9001;
- Лицензия ФСБ на осуществление работ с использованием сведений, составляющих государственную тайну;
- Поставка специализированных компонентов (Xilinx, Altera, Analog Devices, Intersil, Interpoint, Microsemi, Aeroflex, Peregrine, Syfer, Eurofarad, Texas Instrument, Miteq, Cobham, E2V, MA-COM, Hittite, Mini-Circuits, General Dynamics и др.);

Помимо этого, одним из направлений компании «ЭлектроПласт» является направление «Источники питания». Мы предлагаем Вам помощь Конструкторского отдела:

- Подбор оптимального решения, техническое обоснование при выборе компонента;
- Подбор аналогов;
- Консультации по применению компонента;
- Поставка образцов и прототипов;
- Техническая поддержка проекта;
- Защита от снятия компонента с производства.



Как с нами связаться

Телефон: 8 (812) 309 58 32 (многоканальный)

Факс: 8 (812) 320-02-42

Электронная почта: org@eplast1.ru

Адрес: 198099, г. Санкт-Петербург, ул. Калинина, дом 2, корпус 4, литера А.